

DC1

F O R
V I S I O N A R I E S
O N L Y

THIS IS NOT
ANOTHER TOWER BY
THE DUBAI CANAL.

THIS IS THE ONE.
THIS IS DG1.





INVEST IN LUXURY

DG1 is the first tower of its kind designed by DarGlobal, the visionary brand that was among the first to introduce luxury brands into living spaces in Dubai.



ELIE SAAB



MISSONI

MOUAWAD



VERSACE



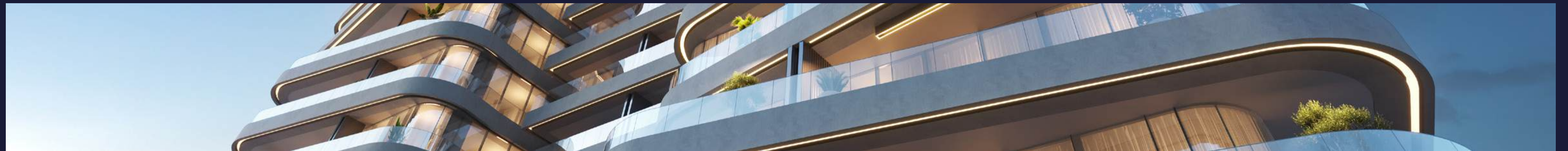
LAST UNITS RELEASED



DG1 represents the **FIRST** of a series of exclusive luxury residences with the ultimate architecture, the ultimate location and the ultimate interior specifications.



D O N ' T M I S S O U T O N L I V I N G B Y T H E D U B A I C A N A L



ICONIC DESIGN. EUROPEAN SPECS. ULTIMATE PRIVACY.

Now is the perfect time to secure
your place in the heart of Dubai.

Don't miss out on the last
remaining units in DG1, only a few
studios, 1, 2, and 3-bedrooms left!

Contact us today to claim your
new home by the Dubai Canal.





P R I M E L O C A T I O N

DG1 is located in the heart of Business Bay directly on Dubai Canal, where stunning views of the city and the water will impress the residents and their guests. The units enjoy North and East/West views, all of them facing Downtown Dubai and Burj Khalifa.

LOCATION

The strategic location of DG1 grants an unbelievable proximity to all that matters. With Burj Khalifa, Dubai Mall and Dubai Opera just a few steps away, and easy access to main roads like Sheikh Zayed Rd, Al Khail Rd and Meydan Rd, DG1 truly embodies the vibrant soul of the city.

4 MIN TO	📍 URBAN OASIS BY MISSONI
4 MIN TO	HILTON HOTEL DUBAI
4 MIN TO	JW MARRIOTT DUBAI
5 MIN TO	THE DUBAI OPERA
5 MIN TO	📍 DAVINCI TOWER BY PAGANI
6 MIN TO	BURJ KHALIFA
6 MIN TO	THE DUBAI MALL
6 MIN TO	THE DORCHESTER DUBAI
7 MIN TO	📍 W RESIDENCES DUBAI - DOWNTOWN
9 MIN TO	SOUK AL BAHAR
12 MIN TO	DUBAI INTERNATIONAL AIRPORT





B R E A T H T A K I N G V I E W S

Every studio enjoys stunning vistas of Burj Khalifa, Downtown Dubai, and the Dubai Canal, enhanced by staggered curved balconies.



BURJ KHALIFA & DOWNTOWN VIEWS





NORTH-EAST DAY VIEW



NORTH-EAST NIGHT VIEW



NORTH-WEST NIGHT VIEW





CRAFTED BY
GENSLER
ARCHITECTS

The architecture fully reflects the dynamic attitude of DG1. Standing out from the cluttered panorama as it recalls a piece of art rather than a conventional tower.

Crafted by Gensler Architects, the most avantgarde designers of our time, the DG1 tower embodies a shape that reshapes the city around it. A sculpture to inhabit, giving every floor a new perspective of the world.





THE WONDER INSIDE

In the building, a great variety of residences in terms of spaces and sizes is conceived to satisfy every kind of need. Style, comfort and luxury are what make these apartments truly unique: decorated with a classy and contemporary taste, each with a private balcony to enjoy the impressive views.











E U R O P E A N S P E C I F I C A T I O N S

Experience the finest in European design with marble interiors, high-end kitchen fittings, and floor-to-ceiling windows that flood your space with natural light.



THE ULTIMATE
PREMIUM
AMENITIES





DELVE INTO
THE INFINITY
POOL DIRECTLY
BY THE CANAL

The Infinity pool at DG1 is a tranquil experience like no other, situated next to a children play area. Directly overlooking the Dubai Canal, you will feel as though your midday swim is a getaway around the canal.



SKY GARDEN

Get away from the urban jungle and immerse yourself in the enchanting Sky Garden on the rooftop. Located on level 16, this is a peaceful nest to reconnect with nature.



I N N E R P E A C E

There's no need to travel far in order
to find real peace of mind.

A yoga studio in the building will be at
disposal of residents who are looking
for a workout or a meditation session,
without leaving their home.

STATE OF THE ART GYM AND RECREATIONAL SPACES

With open views of lush green spaces, the distinctive gym is fully equipped with everything one desires to refuel for the day ahead.





P R I V A C Y A S S U R E D

No retail spaces in the building
to ensure your peace of mind
and privacy.



DG1

F L O O R P L A N S



TYPICAL
FLOOR PLAN
GARDEN SUITES

LEVEL
01



PARTIAL
VIEWS

PARTIAL
VIEWS

CITY VIEWS

- STUDIO
- ONE BEDROOM
- TWO BEDROOMS
- THREE BEDROOMS

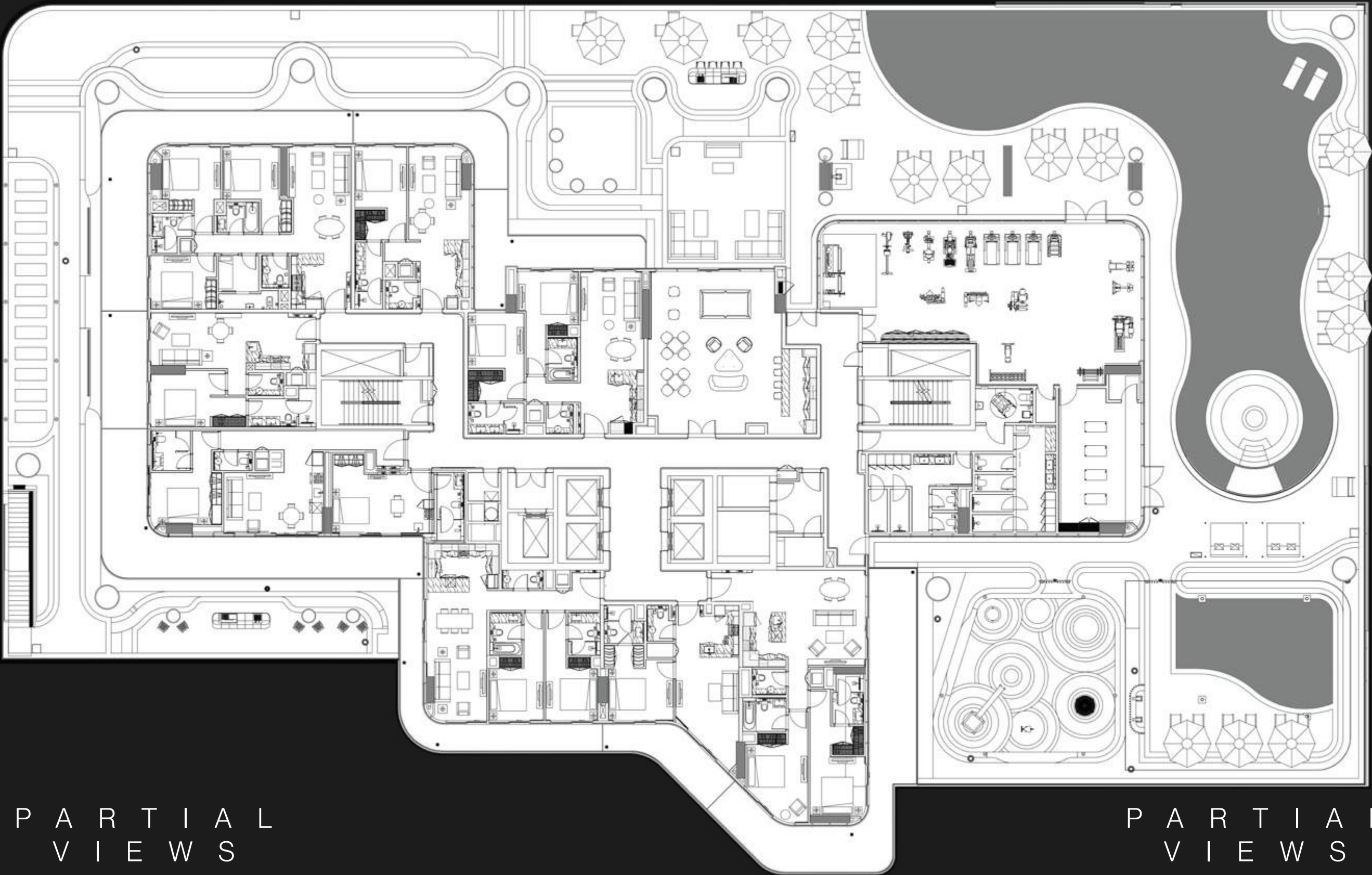
Disclaimer: All pictures, plans, layouts, information, data and details included in this brochure are indicative only and may change at any time up to the final 'as built' status in accordance with final designs of the project, regulatory approvals and planning permissions. All accessories and interior finishes such as wallpaper, chandeliers, furniture, electronics, white goods, curtains, hard and soft landscaping, pavements, features, gym, swimming pool(s) and other elements displayed in the brochure, or within the show apartment or between the plot boundary and the unit, are not part of the unit and are shown for illustrative purposes only.

TYPICAL
FLOOR PLAN
GARDEN SUITES

LEVEL
01



- STUDIO
- ONE BEDROOM
- TWO BEDROOMS
- THREE BEDROOMS



PARTIAL
VIEWS

PARTIAL
VIEWS

CITY VIEWS

Disclaimer: All pictures, plans, layouts, information, data and details included in this brochure are indicative only and may change at any time up to the final 'as built' status in accordance with final designs of the project, regulatory approvals and planning permissions. All accessories and interior finishes such as wallpaper, chandeliers, furniture, electronics, white goods, curtains, hard and soft landscaping, pavements, features, gym, swimming pool(s) and other elements displayed in the brochure, or within the show apartment or between the plot boundary and the unit, are not part of the unit and are shown for illustrative purposes only.

TYPICAL
FLOOR PLAN
01A

LEVELS
02 - 04, 09 - 12



- STUDIO
- ONE BEDROOM
- TWO BEDROOMS
- THREE BEDROOMS

Disclaimer: All pictures, plans, layouts, information, data and details included in this brochure are indicative only and may change at any time up to the final 'as built' status in accordance with final designs of the project, regulatory approvals and planning permissions. All accessories and interior finishes such as wallpaper, chandeliers, furniture, electronics, white goods, curtains, hard and soft landscaping, pavements, features, gym, swimming pool(s) and other elements displayed in the brochure, or within the show apartment or between the plot boundary and the unit, are not part of the unit and are shown for illustrative purposes only.

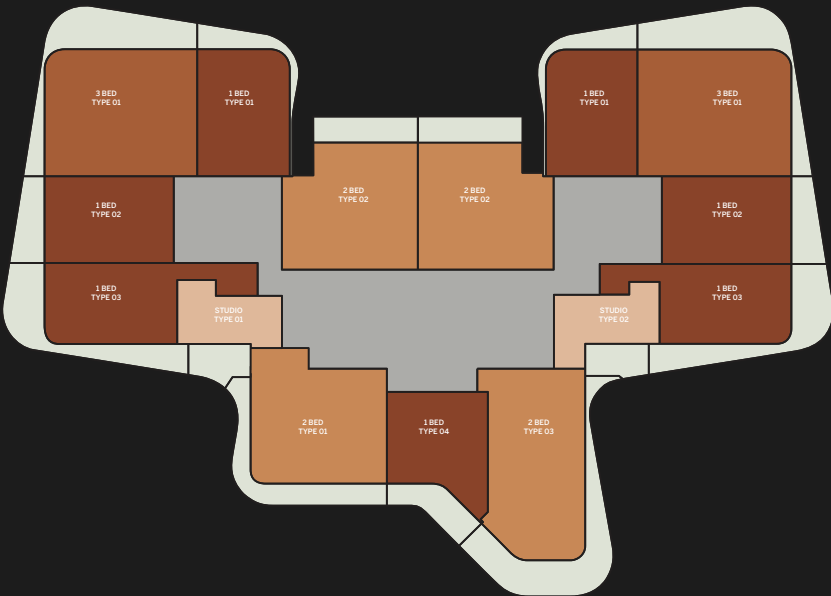
PARTIAL
VIEWS

PARTIAL
VIEWS

CITY VIEWS

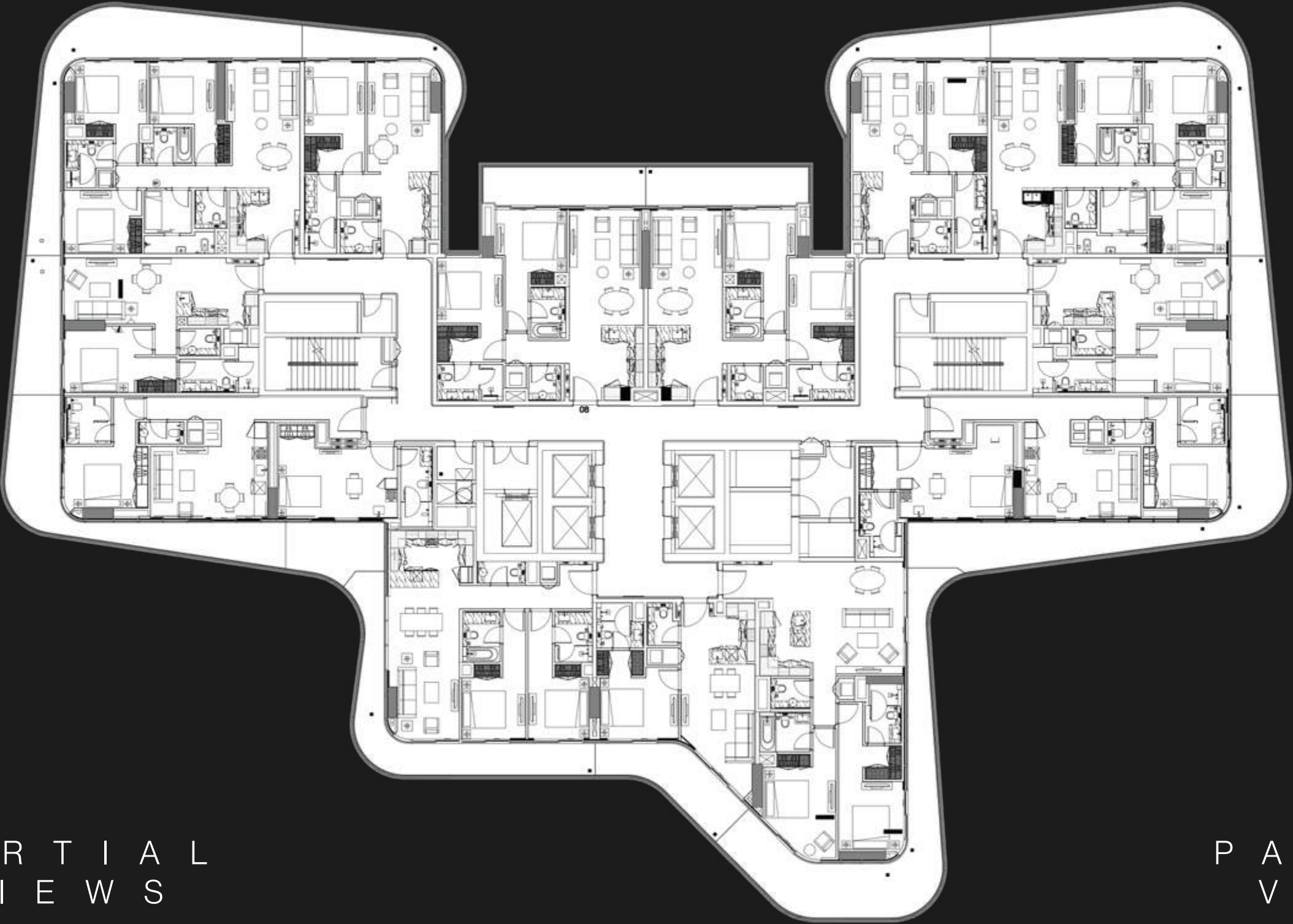
TYPICAL
FLOOR PLAN
01A

LEVELS
02 - 04, 09 - 12



- STUDIO
- ONE BEDROOM
- TWO BEDROOMS
- THREE BEDROOMS

Disclaimer: All pictures, plans, layouts, information, data and details included in this brochure are indicative only and may change at any time up to the final 'as built' status in accordance with final designs of the project, regulatory approvals and planning permissions. All accessories and interior finishes such as wallpaper, chandeliers, furniture, electronics, white goods, curtains, hard and soft landscaping, pavements, features, gym, swimming pool(s) and other elements displayed in the brochure, or within the show apartment or between the plot boundary and the unit, are not part of the unit and are shown for illustrative purposes only.



PARTIAL
VIEWS

PARTIAL
VIEWS

CITY VIEWS

TYPICAL
FLOOR PLAN
01B

LEVELS
05 - 08, 13 - 15



PARTIAL
VIEWS

PARTIAL
VIEWS

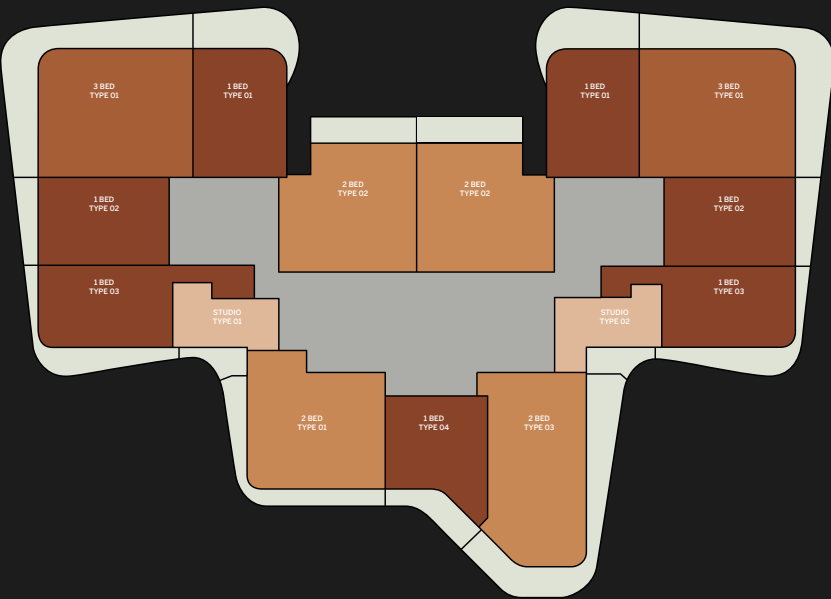
CITY VIEWS

- STUDIO
- ONE BEDROOM
- TWO BEDROOMS
- THREE BEDROOMS

Disclaimer: All pictures, plans, layouts, information, data and details included in this brochure are indicative only and may change at any time up to the final 'as built' status in accordance with final designs of the project, regulatory approvals and planning permissions. All accessories and interior finishes such as wallpaper, chandeliers, furniture, electronics, white goods, curtains, hard and soft landscaping, pavements, features, gym, swimming pool(s) and other elements displayed in the brochure, or within the show apartment or between the plot boundary and the unit, are not part of the unit and are shown for illustrative purposes only.

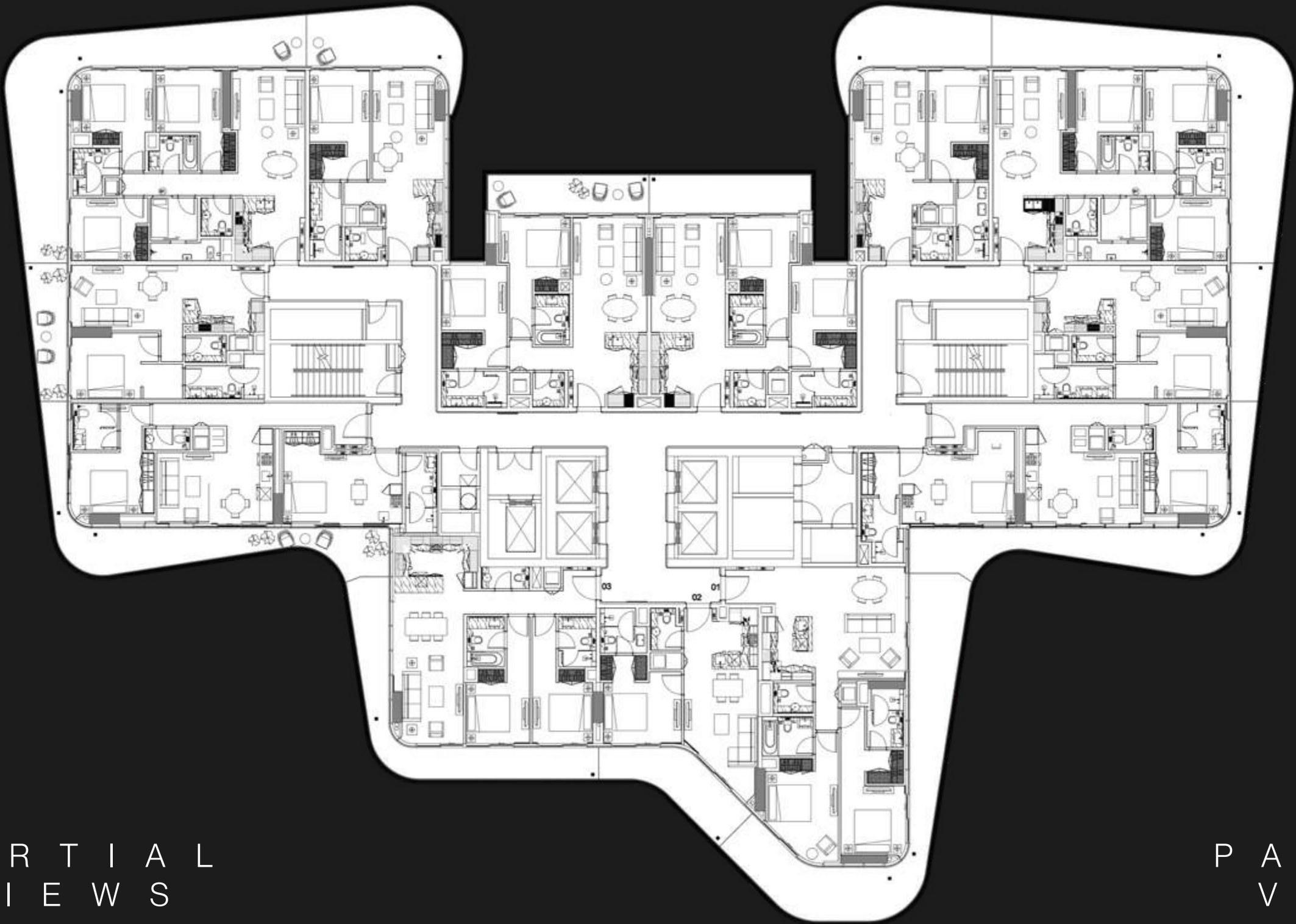
TYPICAL
FLOOR PLAN
01B

LEVELS
05 - 08, 13 - 15



- STUDIO
- ONE BEDROOM
- TWO BEDROOMS
- THREE BEDROOMS

Disclaimer: All pictures, plans, layouts, information, data and details included in this brochure are indicative only and may change at any time up to the final 'as built' status in accordance with final designs of the project, regulatory approvals and planning permissions. All accessories and interior finishes such as wallpaper, chandeliers, furniture, electronics, white goods, curtains, hard and soft landscaping, pavements, features, gym, swimming pool(s) and other elements displayed in the brochure, or within the show apartment or between the plot boundary and the unit, are not part of the unit and are shown for illustrative purposes only.



PARTIAL
VIEWS

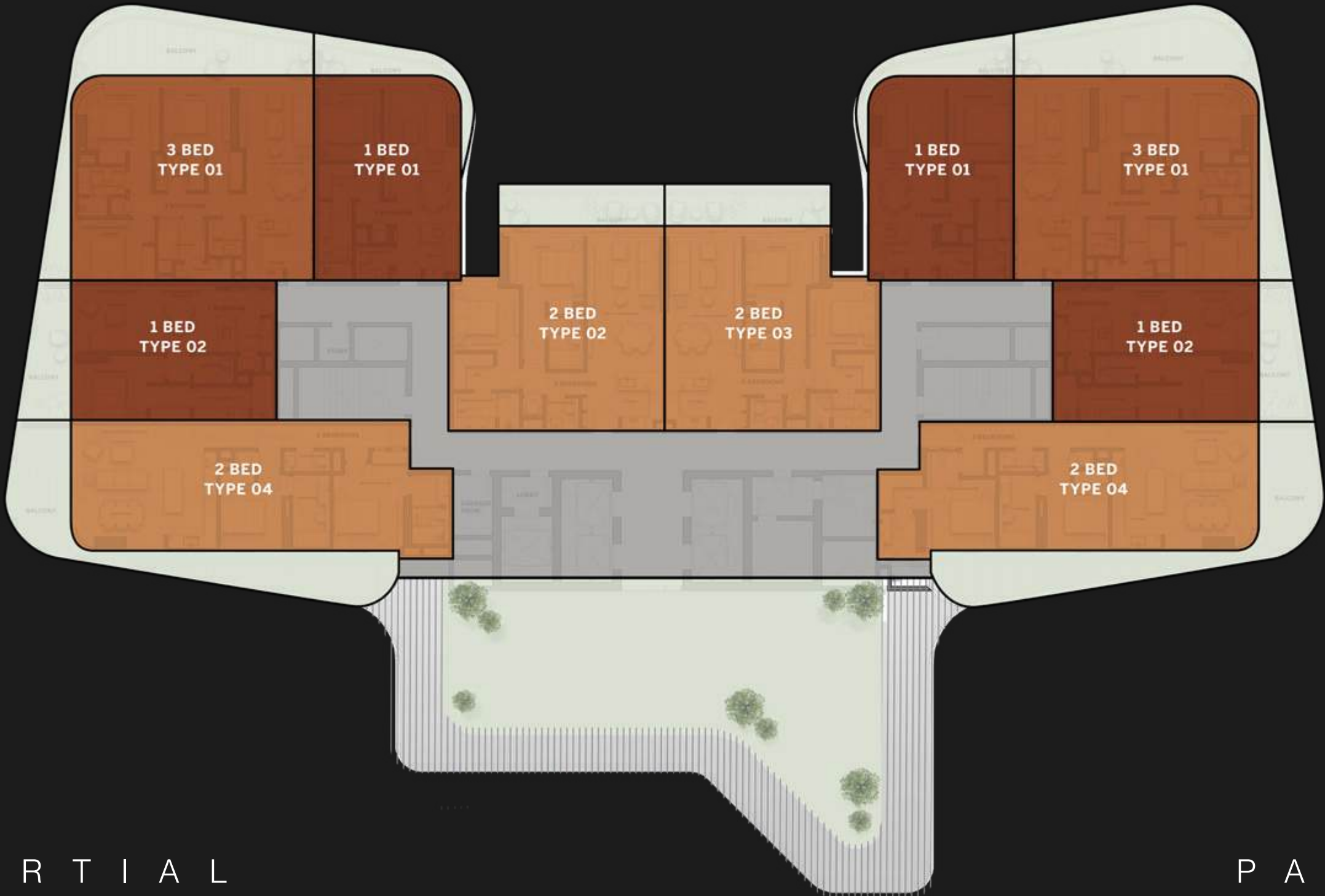
PARTIAL
VIEWS

CITY VIEWS

TYPICAL
FLOOR PLAN
SKY SUITES

LEVEL
16

DIRECT ACCESS TO
THE SKY GARDEN



- STUDIO
- ONE BEDROOM
- TWO BEDROOMS
- THREE BEDROOMS

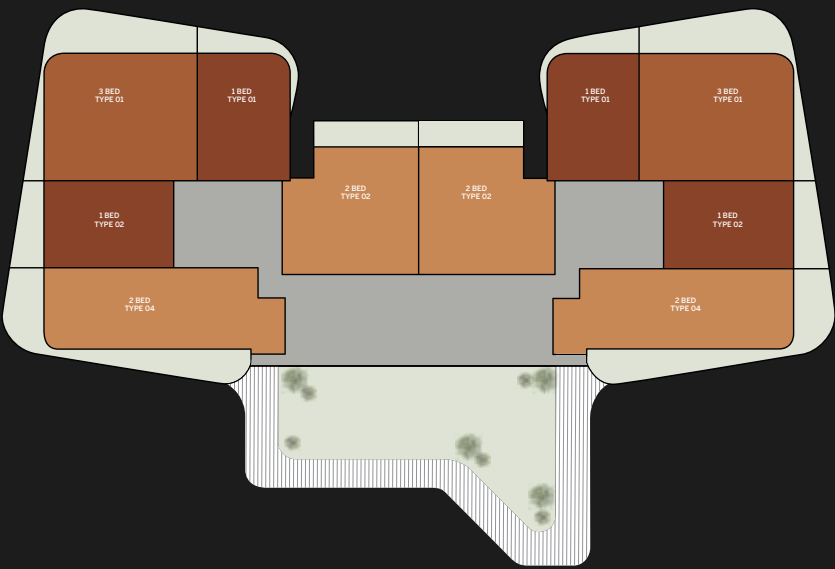
Disclaimer: All pictures, plans, layouts, information, data and details included in this brochure are indicative only and may change at any time up to the final 'as built' status in accordance with final designs of the project, regulatory approvals and planning permissions. All accessories and interior finishes such as wallpaper, chandeliers, furniture, electronics, white goods, curtains, hard and soft landscaping, pavements, features, gym, swimming pool(s) and other elements displayed in the brochure, or within the show apartment or between the plot boundary and the unit, are not part of the unit and are shown for illustrative purposes only.

CITY VIEWS

TYPICAL
FLOOR PLAN
SKY SUITES

LEVEL
16

DIRECT ACCESS TO
THE SKY GARDEN



- STUDIO
- ONE BEDROOM
- TWO BEDROOMS
- THREE BEDROOMS

Disclaimer: All pictures, plans, layouts, information, data and details included in this brochure are indicative only and may change at any time up to the final 'as built' status in accordance with final designs of the project, regulatory approvals and planning permissions. All accessories and interior finishes such as wallpaper, chandeliers, furniture, electronics, white goods, curtains, hard and soft landscaping, pavements, features, gym, swimming pool(s) and other elements displayed in the brochure, or within the show apartment or between the plot boundary and the unit, are not part of the unit and are shown for illustrative purposes only.



PARTIAL
VIEWS

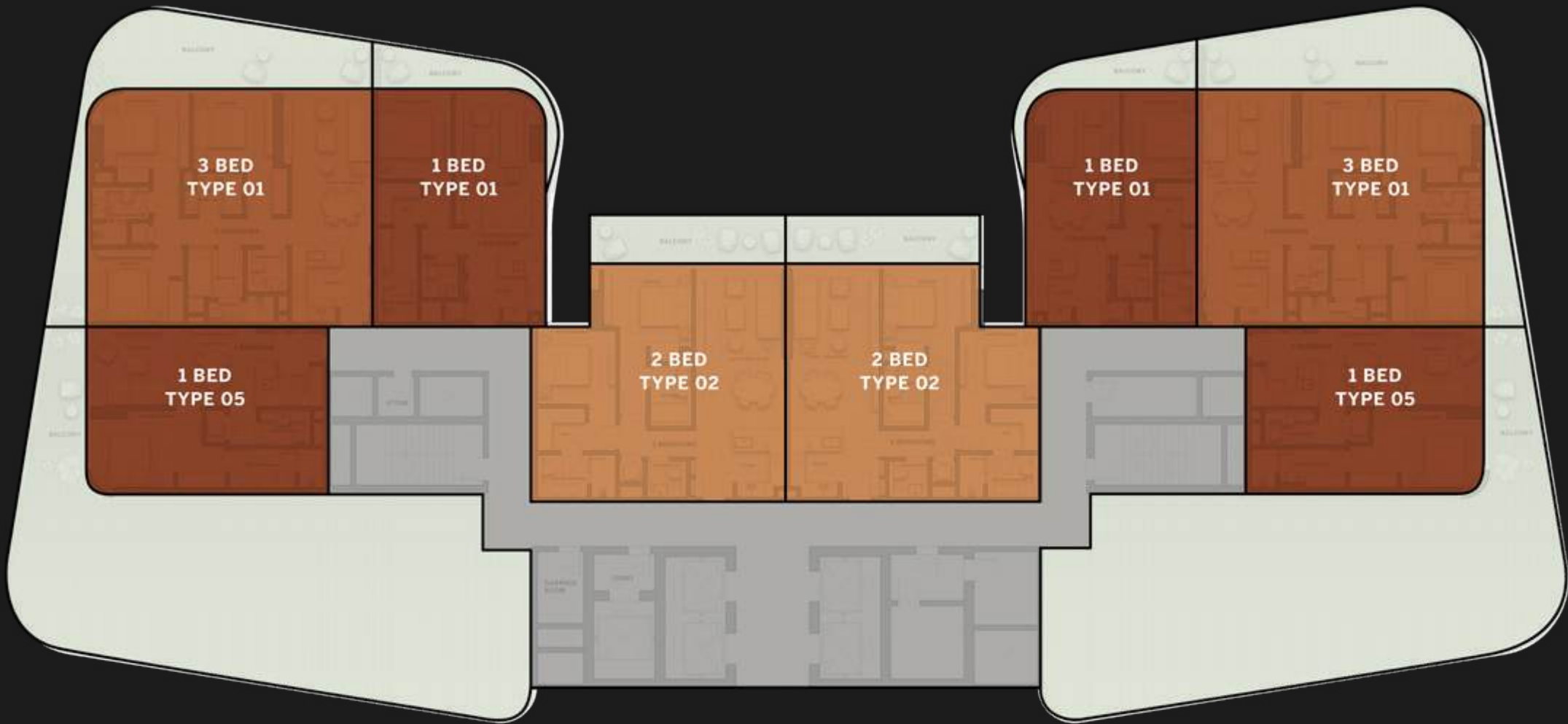
PARTIAL
VIEWS

CITY VIEWS

TYPICAL
FLOOR PLAN
SKY SUITES

LEVEL
17

OVERLOOKING
THE SKY GARDEN



- STUDIO
- ONE BEDROOM
- TWO BEDROOMS
- THREE BEDROOMS

Disclaimer: All pictures, plans, layouts, information, data and details included in this brochure are indicative only and may change at any time up to the final 'as built' status in accordance with final designs of the project, regulatory approvals and planning permissions. All accessories and interior finishes such as wallpaper, chandeliers, furniture, electronics, white goods, curtains, hard and soft landscaping, pavements, features, gym, swimming pool(s) and other elements displayed in the brochure, or within the show apartment or between the plot boundary and the unit, are not part of the unit and are shown for illustrative purposes only.

PARTIAL
VIEWS

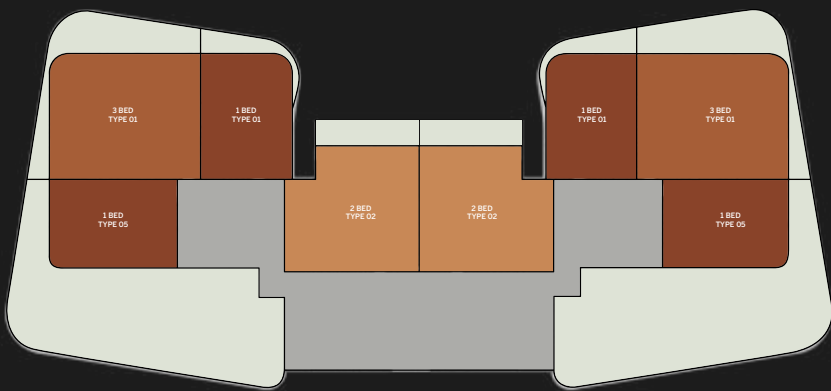
PARTIAL
VIEWS

CITY VIEWS

TYPICAL
FLOOR PLAN
SKY SUITES

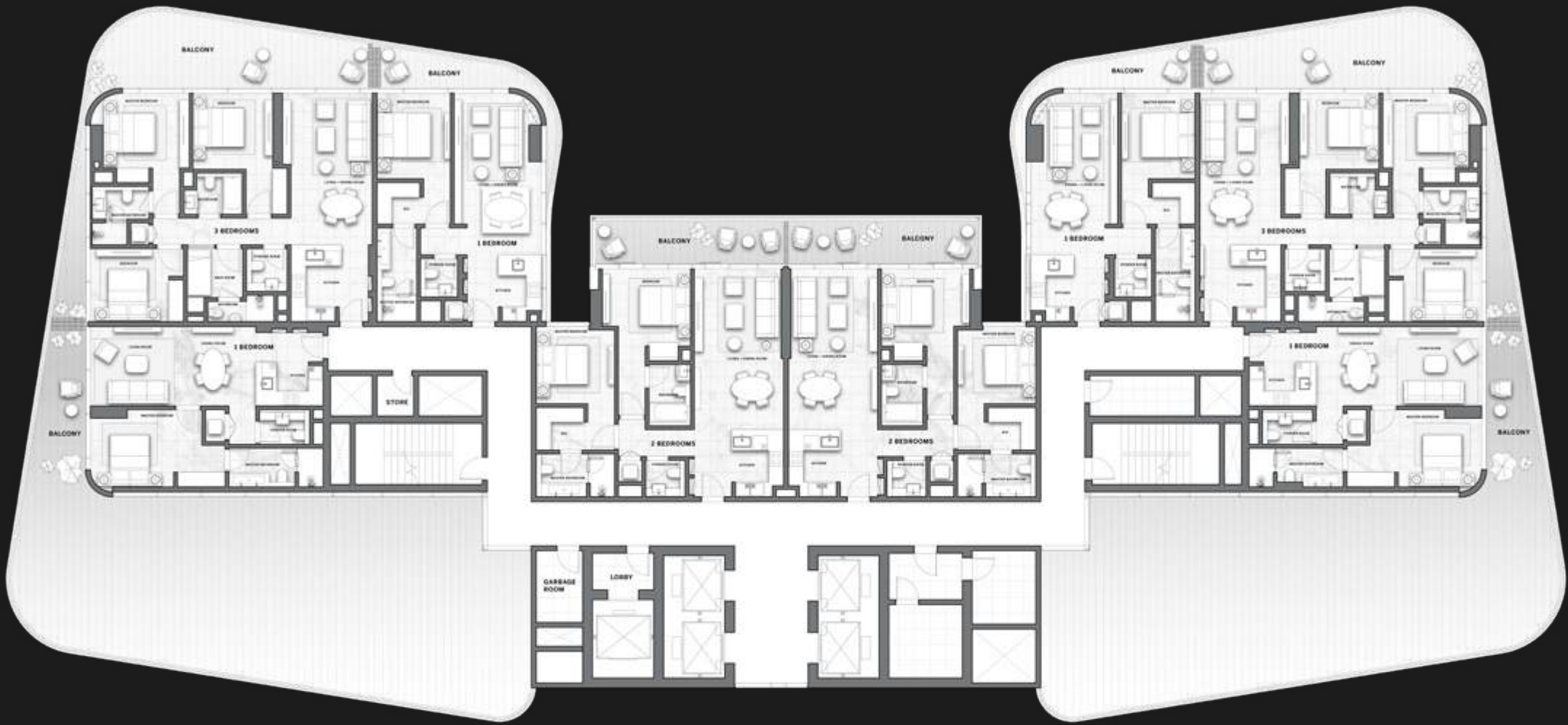
LEVEL
17

OVERLOOKING
THE SKY GARDEN



- STUDIO
- ONE BEDROOM
- TWO BEDROOMS
- THREE BEDROOMS

Disclaimer: All pictures, plans, layouts, information, data and details included in this brochure are indicative only and may change at any time up to the final 'as built' status in accordance with final designs of the project, regulatory approvals and planning permissions. All accessories and interior finishes such as wallpaper, chandeliers, furniture, electronics, white goods, curtains, hard and soft landscaping, pavements, features, gym, swimming pool(s) and other elements displayed in the brochure, or within the show apartment or between the plot boundary and the unit, are not part of the unit and are shown for illustrative purposes only.



PARTIAL
VIEWS

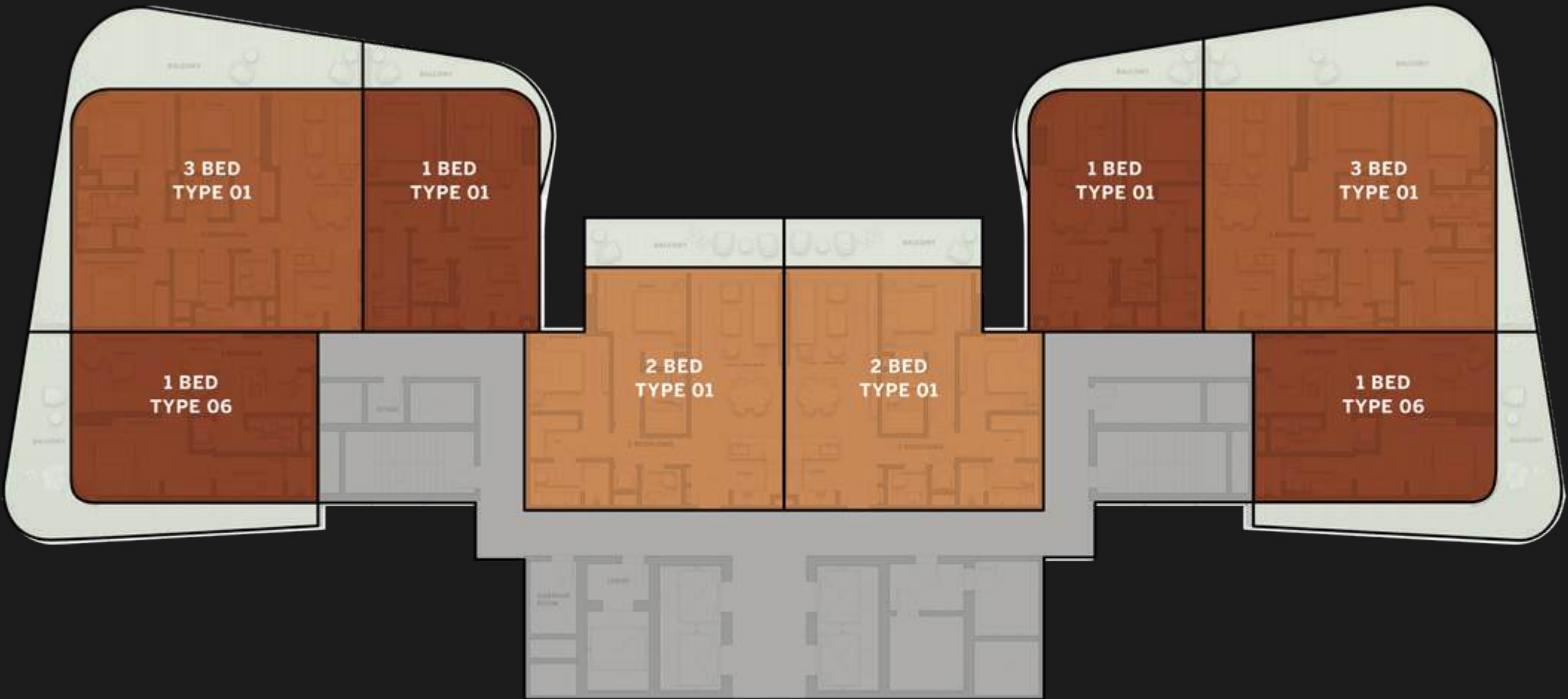
PARTIAL
VIEWS

CITY VIEWS

TYPICAL
FLOOR PLAN
SKY SUITES

LEVELS
18 - 19

OVERLOOKING
THE SKY GARDEN



- STUDIO
- ONE BEDROOM
- TWO BEDROOMS
- THREE BEDROOMS

Disclaimer: All pictures, plans, layouts, information, data and details included in this brochure are indicative only and may change at any time up to the final 'as built' status in accordance with final designs of the project, regulatory approvals and planning permissions. All accessories and interior finishes such as wallpaper, chandeliers, furniture, electronics, white goods, curtains, hard and soft landscaping, pavements, features, gym, swimming pool(s) and other elements displayed in the brochure, or within the show apartment or between the plot boundary and the unit, are not part of the unit and are shown for illustrative purposes only.

PARTIAL
VIEWS

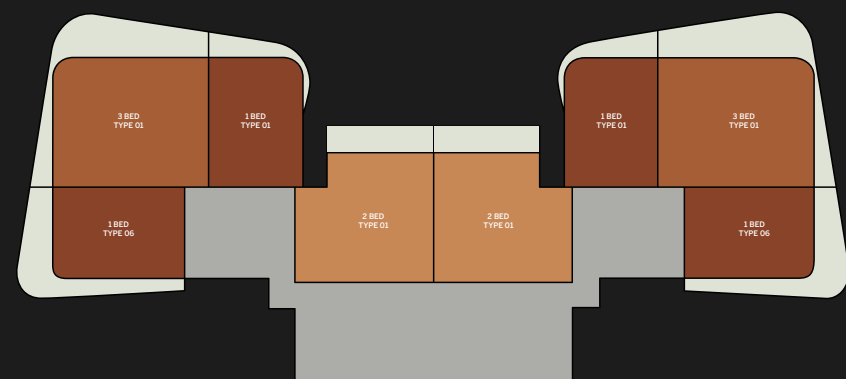
PARTIAL
VIEWS

CITY VIEWS

TYPICAL FLOOR PLAN SKY SUITES

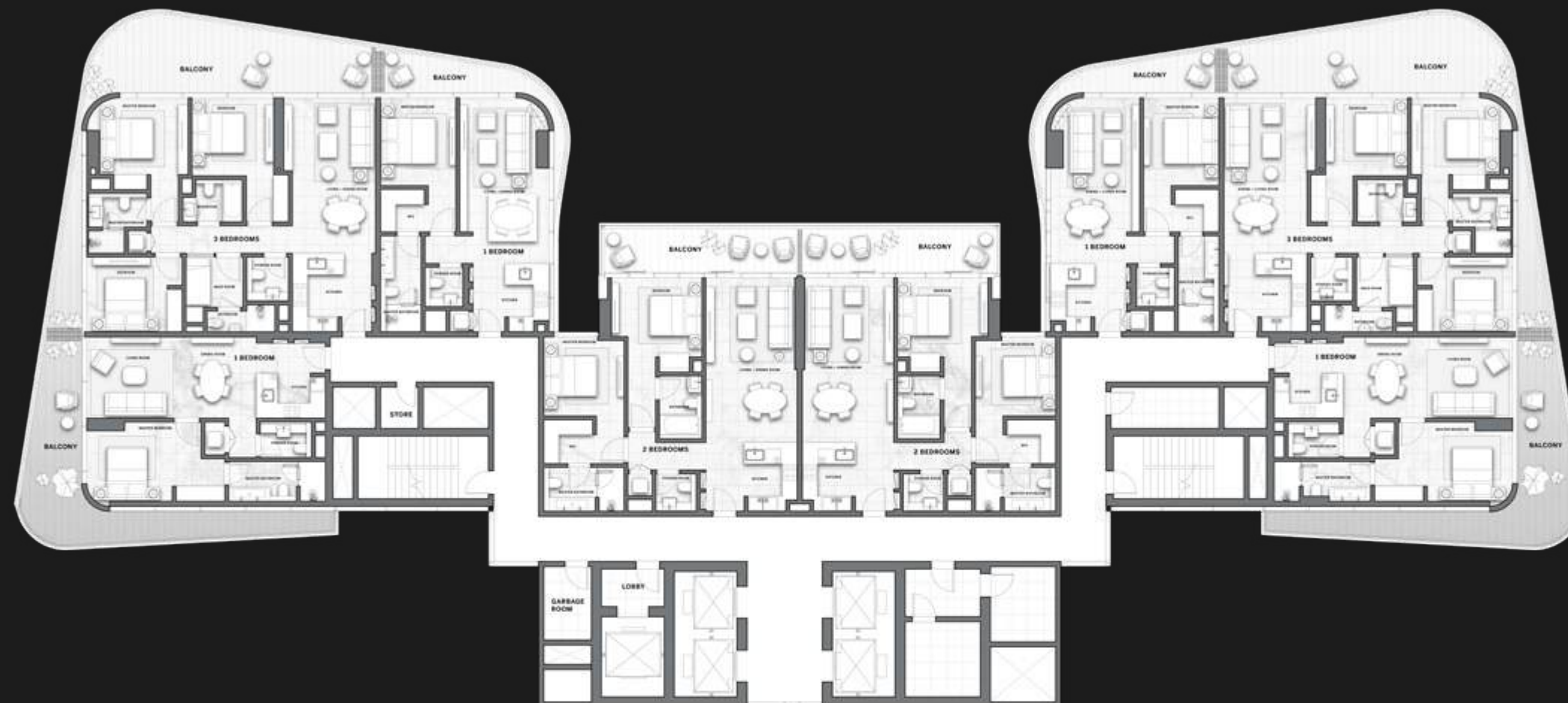
LEVELS
18 - 19

OVERLOOKING
THE SKY GARDEN



- STUDIO
- ONE BEDROOM
- TWO BEDROOMS
- THREE BEDROOMS

Disclaimer: All pictures, plans, layouts, information, data and details included in this brochure are indicative only and may change at any time up to the final 'as built' status in accordance with final designs of the project, regulatory approvals and planning permissions. All accessories and interior finishes such as wallpaper, chandeliers, furniture, electronics, white goods, curtains, hard and soft landscaping, pavements, features, gym, swimming pool(s) and other elements displayed in the brochure, or within the show apartment or between the plot boundary and the unit, are not part of the unit and are shown for illustrative purposes only.



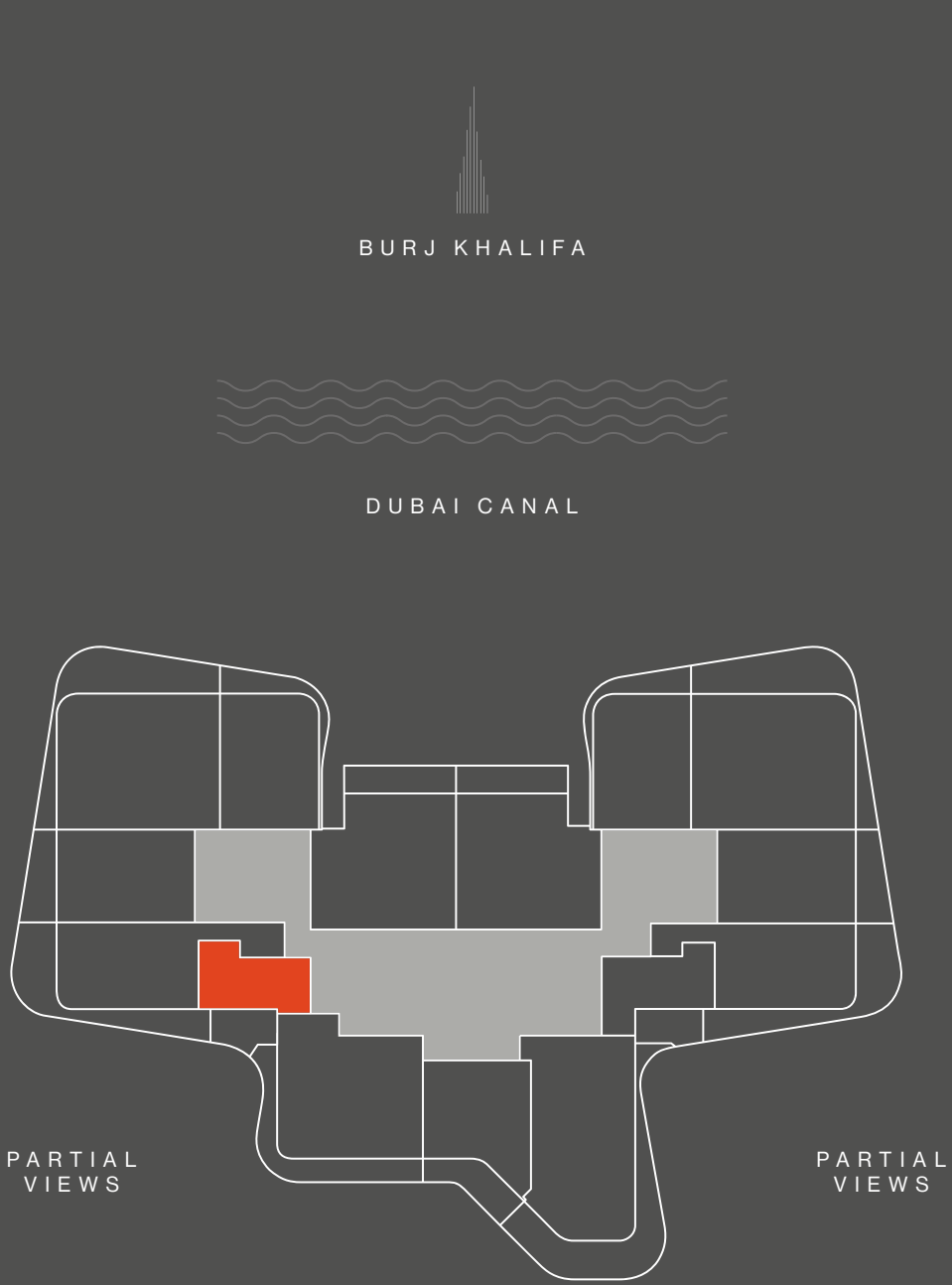
PARTIAL
VIEWS

PARTIAL
VIEWS

CITY VIEWS

STUDIO
TYPE 01

LEVELS
1 - 15

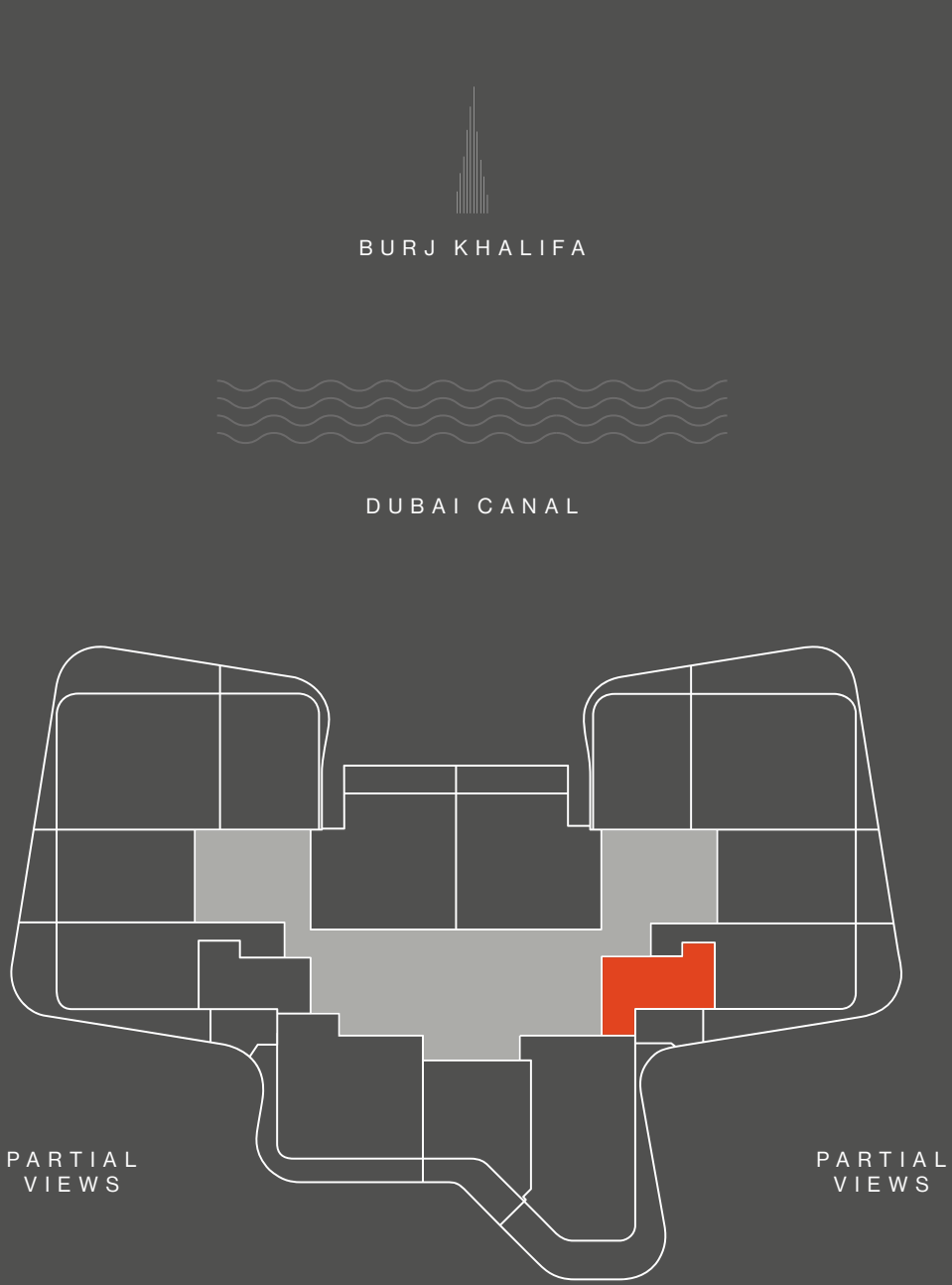


INTERNAL AREA	sqm	33	sqft	355
BALCONY	sqm	9 - 12	sqft	97 - 129
TOTAL	sqm	42 - 45	sqft	452 - 484

Disclaimer: All pictures, plans, layouts, information, data and details included in this brochure are indicative only and may change at any time up to the final 'as built' status in accordance with final designs of the project, regulatory approvals and planning permissions. All accessories and interior finishes such as wallpaper, chandeliers, furniture, electronics, white goods, curtains, hard and soft landscaping, pavements, features, gym, swimming pool(s) and other elements displayed in the brochure, or within the show apartment or between the plot boundary and the unit, are not part of the unit and are shown for illustrative purposes only.

STUDIO
TYPE 02

LEVELS
3 - 15

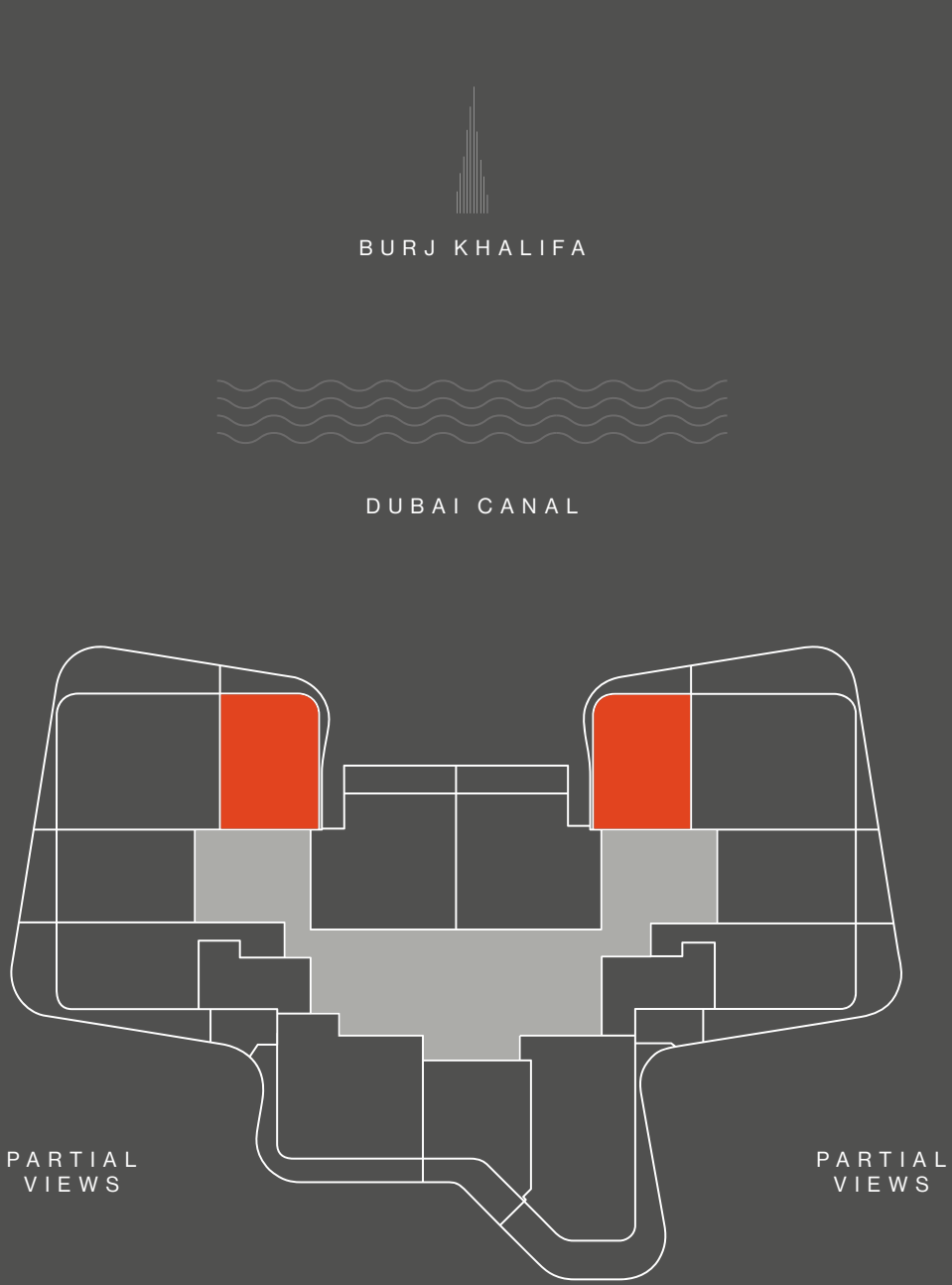


INTERNAL AREA	sqm 35	sqft 484
BALCONY	sqm 10 - 11	sqft 108 - 118
TOTAL	sqm 46 - 47	sqft 420 - 796

Disclaimer: All pictures, plans, layouts, information, data and details included in this brochure are indicative only and may change at any time up to the final 'as built' status in accordance with final designs of the project, regulatory approvals and planning permissions. All accessories and interior finishes such as wallpaper, chandeliers, furniture, electronics, white goods, curtains, hard and soft landscaping, pavements, features, gym, swimming pool(s) and other elements displayed in the brochure, or within the show apartment or between the plot boundary and the unit, are not part of the unit and are shown for illustrative purposes only.

1-BED
TYPE 01

LEVELS
1 - 19

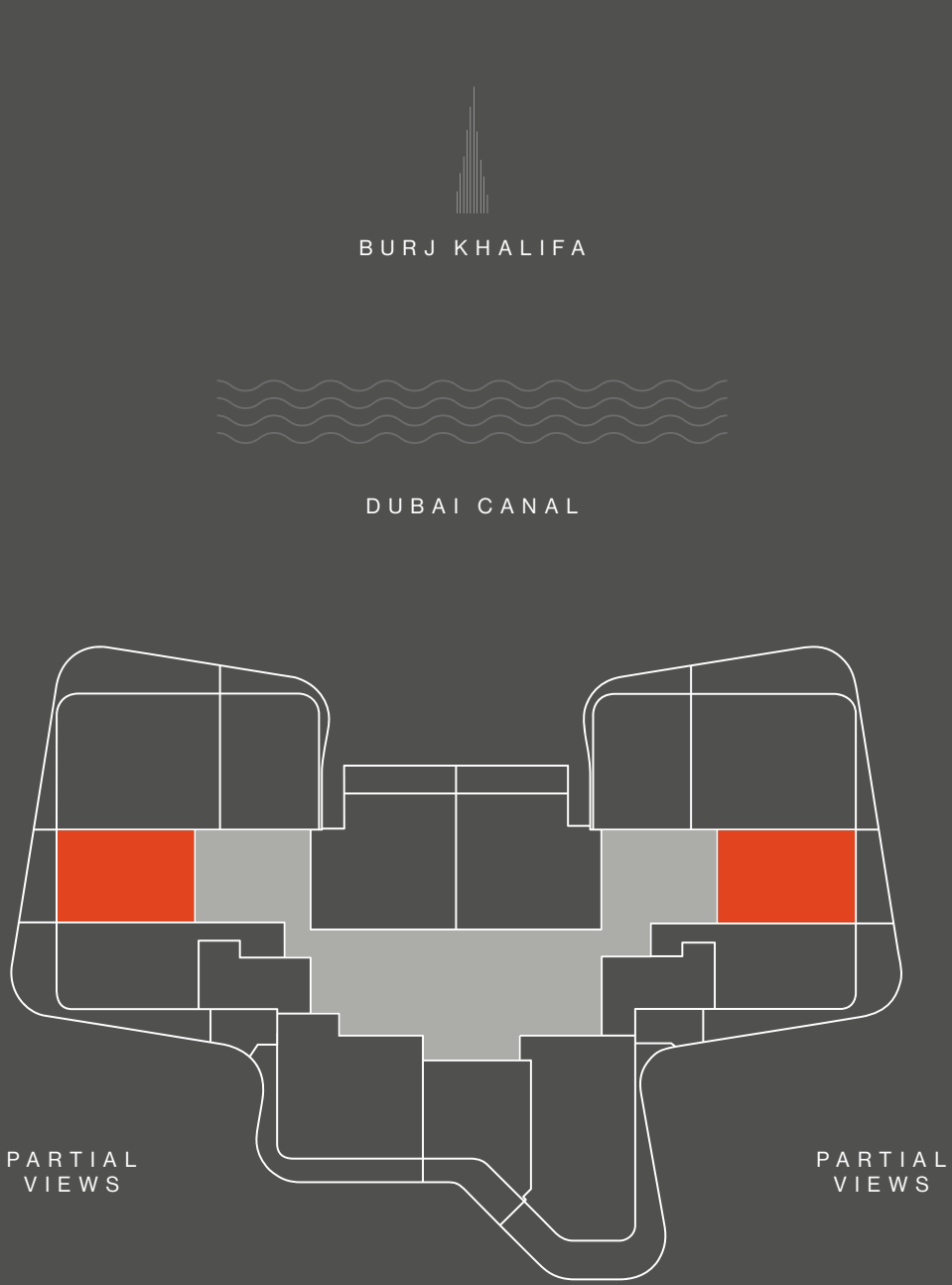


INTERNAL AREA	sqm 66	sqft 710
BALCONY	sqm 10 - 22	sqft 108 - 237
TOTAL	sqm 76 - 88	sqft 818 - 947

Disclaimer: All pictures, plans, layouts, information, data and details included in this brochure are indicative only and may change at any time up to the final 'as built' status in accordance with final designs of the project, regulatory approvals and planning permissions. All accessories and interior finishes such as wallpaper, chandeliers, furniture, electronics, white goods, curtains, hard and soft landscaping, pavements, features, gym, swimming pool(s) and other elements displayed in the brochure, or within the show apartment or between the plot boundary and the unit, are not part of the unit and are shown for illustrative purposes only.

1-BED
TYPE 02

LEVELS
1 - 19



CITY VIEWS

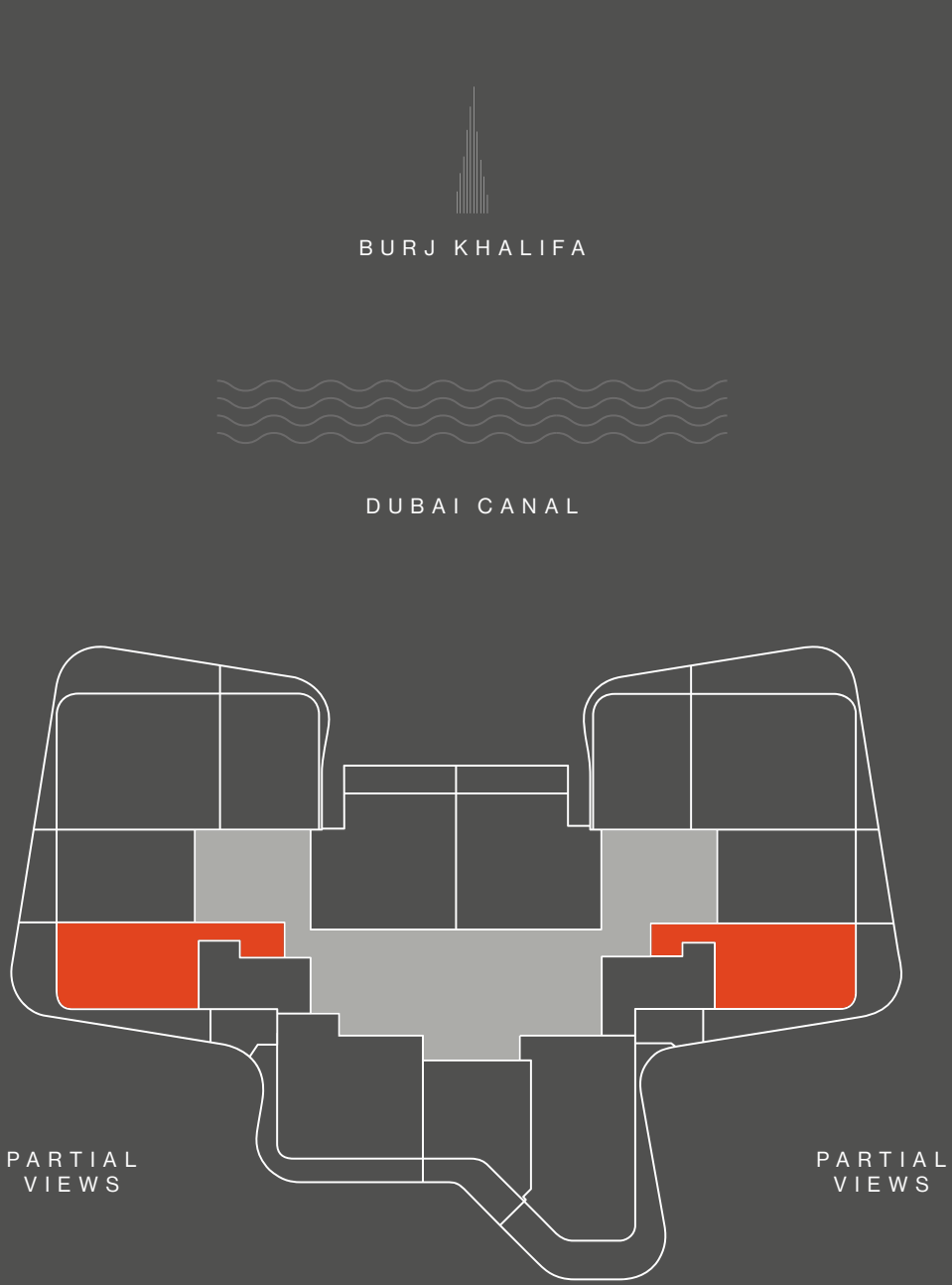


INTERNAL AREA	sqm 66	sqft 710
BALCONY	sqm 13 - 15	sqft 140 - 161
TOTAL	sqm 79 - 81	sqft 850 - 871

Disclaimer: All pictures, plans, layouts, information, data and details included in this brochure are indicative only and may change at any time up to the final 'as built' status in accordance with final designs of the project, regulatory approvals and planning permissions. All accessories and interior finishes such as wallpaper, chandeliers, furniture, electronics, white goods, curtains, hard and soft landscaping, pavements, features, gym, swimming pool(s) and other elements displayed in the brochure, or within the show apartment or between the plot boundary and the unit, are not part of the unit and are shown for illustrative purposes only.

1-BED
TYPE 03

LEVELS
1 - 15

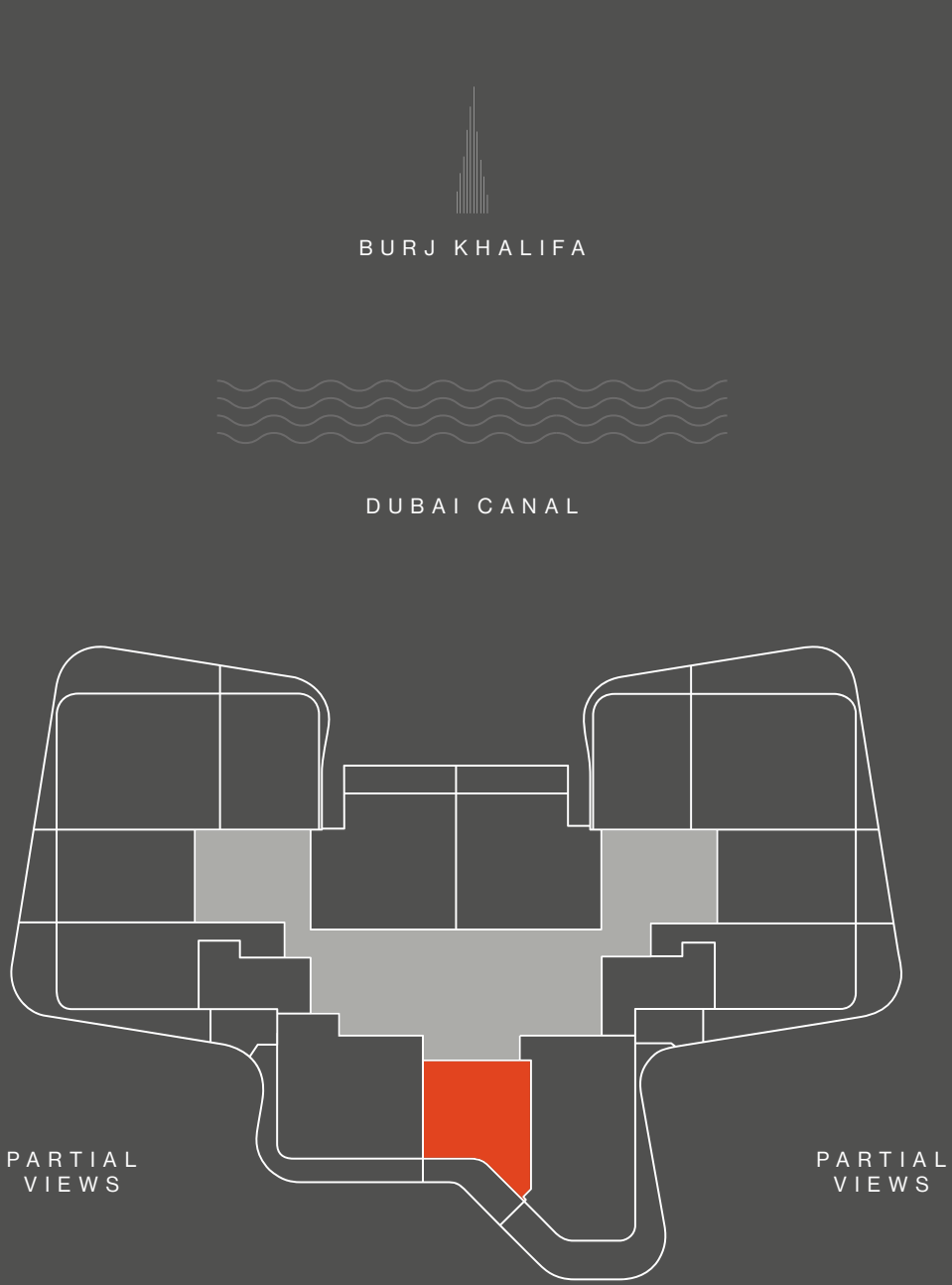


INTERNAL AREA	sqm 71	sqft 764
BALCONY	sqm 27 - 49	sqft 291 - 527
TOTAL	sqm 98 - 120	sqft 1,055 - 1,292

Disclaimer: All pictures, plans, layouts, information, data and details included in this brochure are indicative only and may change at any time up to the final 'as built' status in accordance with final designs of the project, regulatory approvals and planning permissions. All accessories and interior finishes such as wallpaper, chandeliers, furniture, electronics, white goods, curtains, hard and soft landscaping, pavements, features, gym, swimming pool(s) and other elements displayed in the brochure, or within the show apartment or between the plot boundary and the unit, are not part of the unit and are shown for illustrative purposes only.

1-BED
TYPE 04

LEVELS
1 - 15

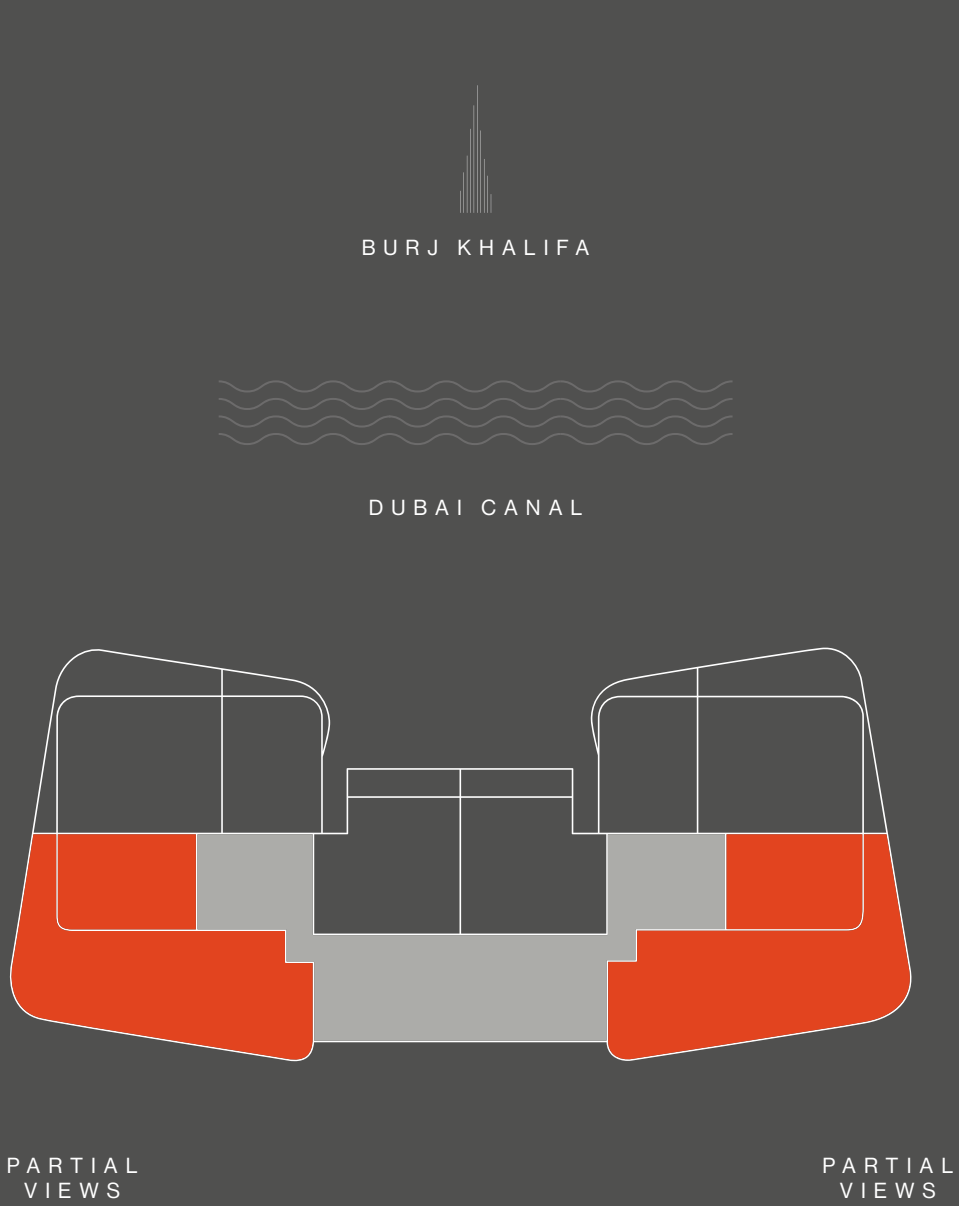


INTERNAL AREA	sqm 60	sqft 646
BALCONY	sqm 14 - 15	sqft 151 - 161
TOTAL	sqm 74 - 75	sqft 797 - 807

Disclaimer: All pictures, plans, layouts, information, data and details included in this brochure are indicative only and may change at any time up to the final 'as built' status in accordance with final designs of the project, regulatory approvals and planning permissions. All accessories and interior finishes such as wallpaper, chandeliers, furniture, electronics, white goods, curtains, hard and soft landscaping, pavements, features, gym, swimming pool(s) and other elements displayed in the brochure, or within the show apartment or between the plot boundary and the unit, are not part of the unit and are shown for illustrative purposes only.

1-BED
TYPE 05

LEVEL
17



CITY VIEWS

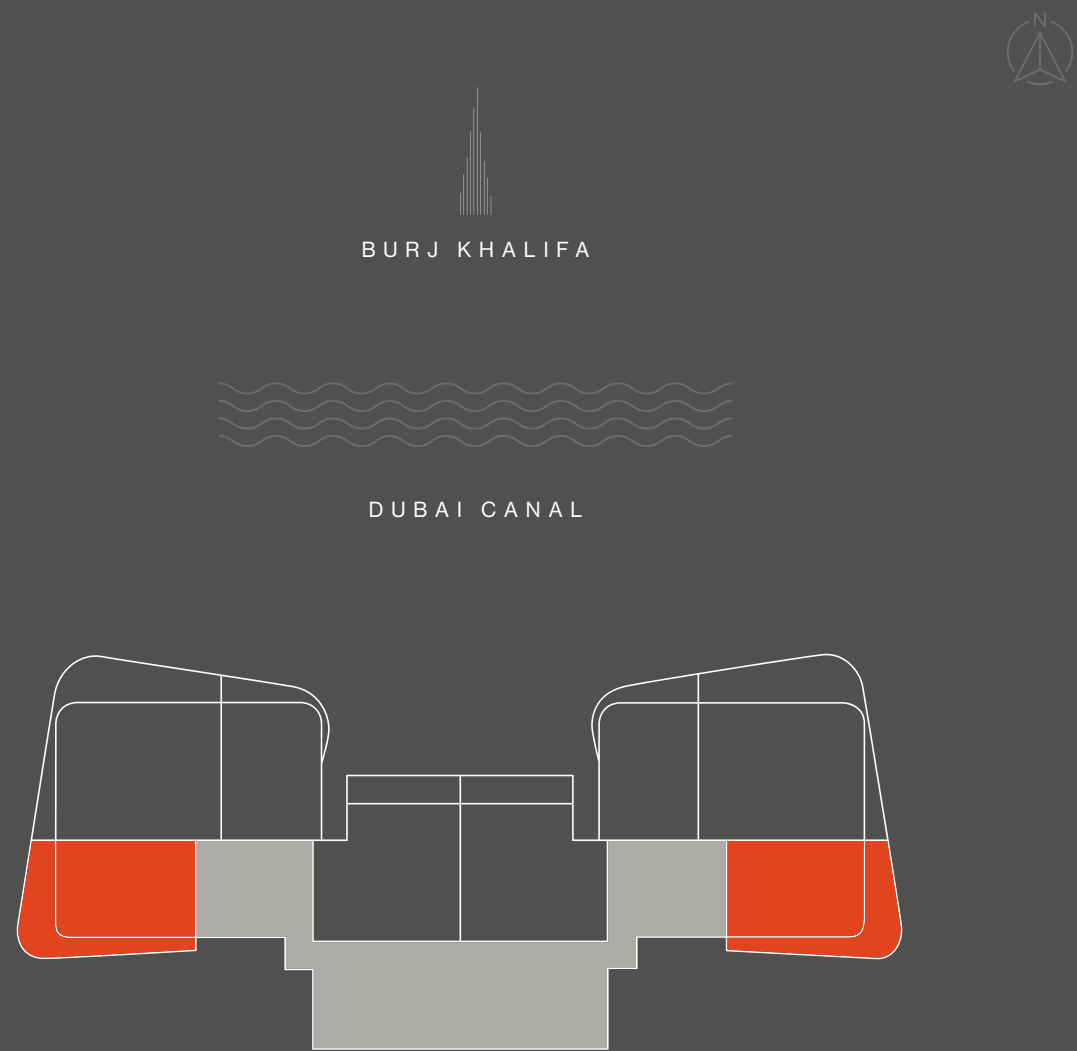


INTERNAL AREA	sqm 62	sqft 667
BALCONY	sqm 167	sqft 1,804
TOTAL	sqm 230	sqft 2,471

Disclaimer: All pictures, plans, layouts, information, data and details included in this brochure are indicative only and may change at any time up to the final 'as built' status in accordance with final designs of the project, regulatory approvals and planning permissions. All accessories and interior finishes such as wallpaper, chandeliers, furniture, electronics, white goods, curtains, hard and soft landscaping, pavements, features, gym, swimming pool(s) and other elements displayed in the brochure, or within the show apartment or between the plot boundary and the unit, are not part of the unit and are shown for illustrative purposes only.

1-BED
TYPE 06

LEVELS
18 - 19



PARTIAL
VIEWS

PARTIAL
VIEWS

CITY VIEWS

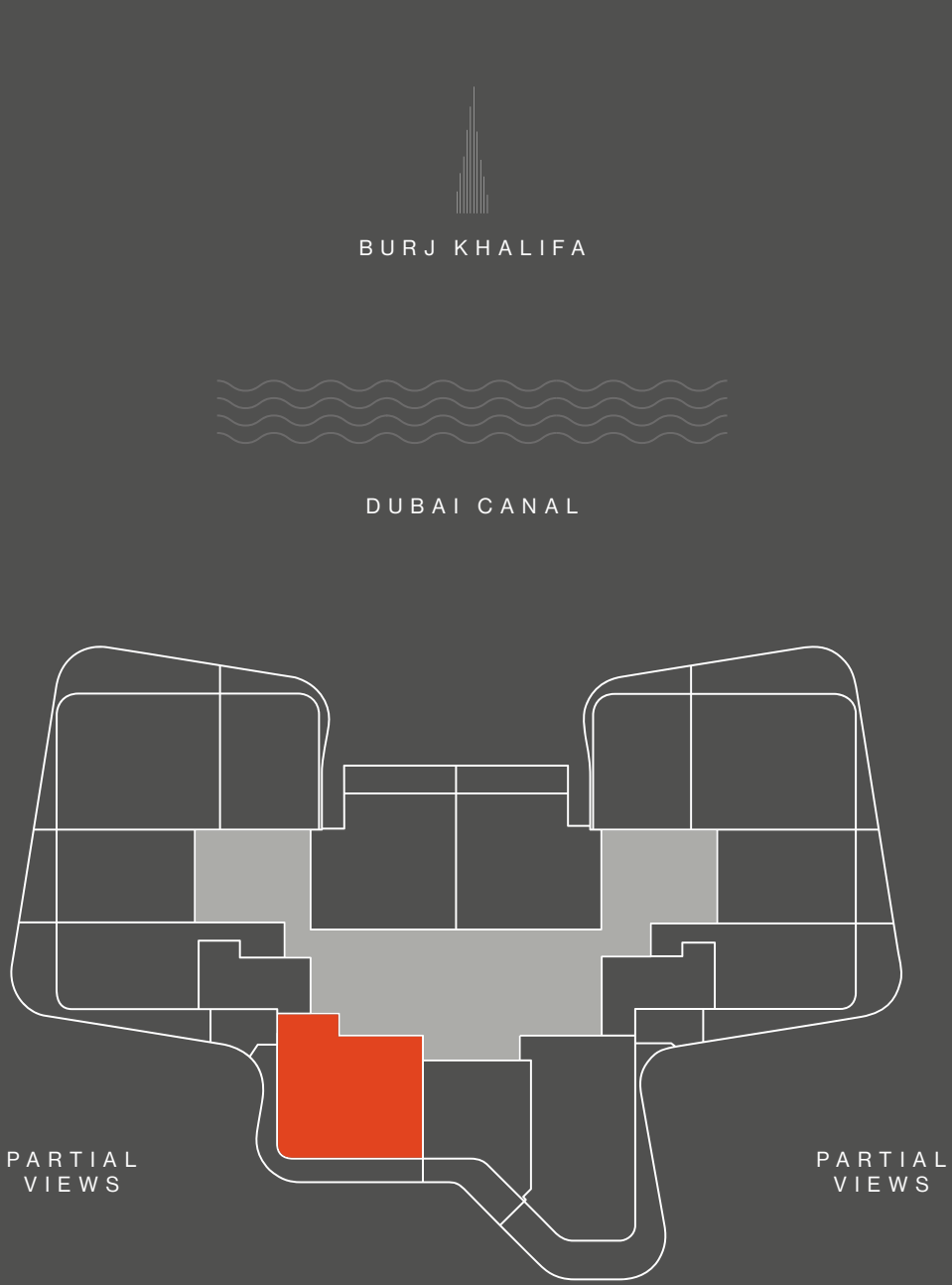


INTERNAL AREA	sqm	62	sqft	674
BALCONY	sqm	27	sqft	291
TOTAL	sqm	90	sqft	964

Disclaimer: All pictures, plans, layouts, information, data and details included in this brochure are indicative only and may change at any time up to the final 'as built' status in accordance with final designs of the project, regulatory approvals and planning permissions. All accessories and interior finishes such as wallpaper, chandeliers, furniture, electronics, white goods, curtains, hard and soft landscaping, pavements, features, gym, swimming pool(s) and other elements displayed in the brochure, or within the show apartment or between the plot boundary and the unit, are not part of the unit and are shown for illustrative purposes only.

2 - BEDS
TYPE 01

LEVELS
1 - 15

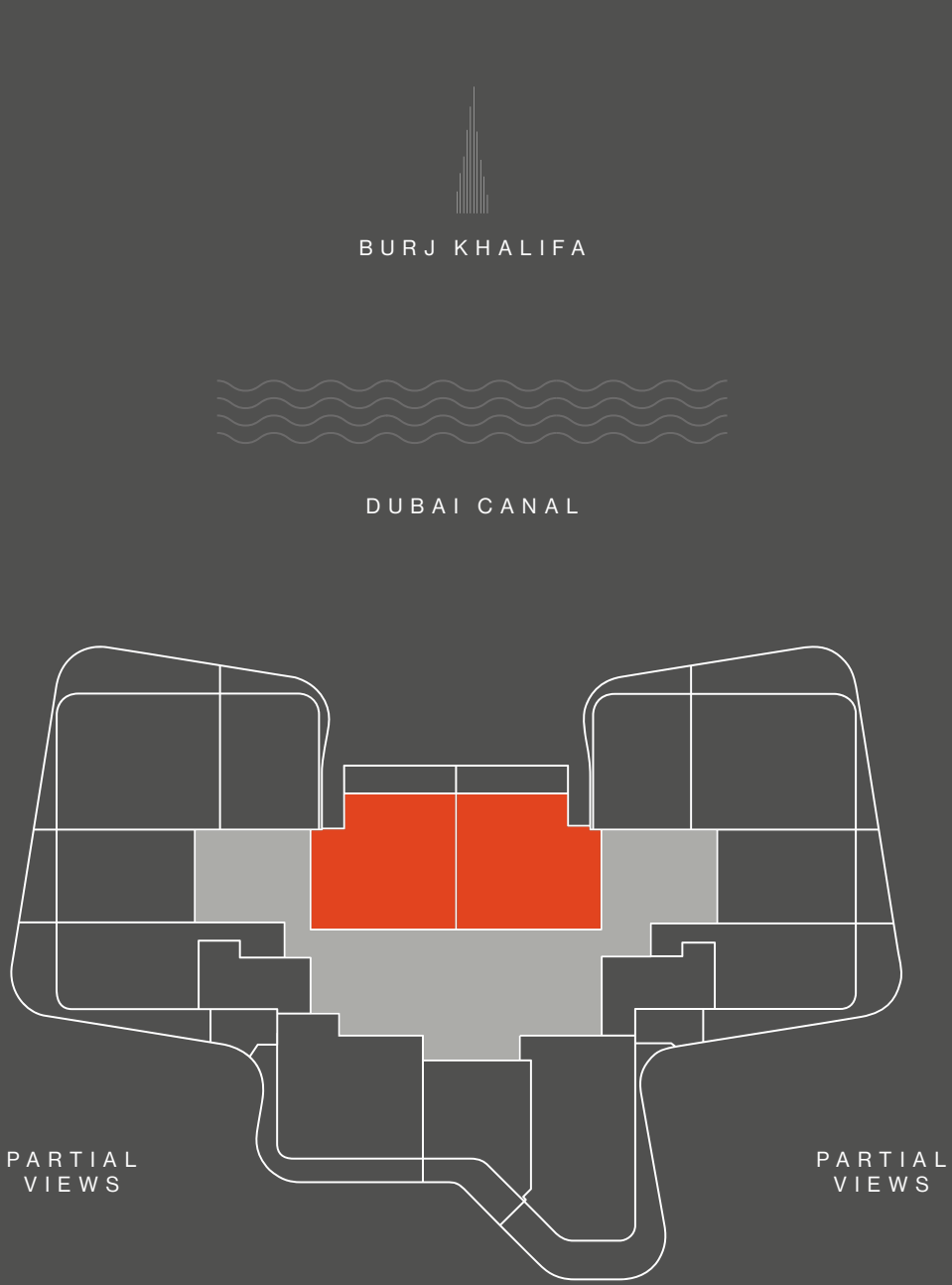


INTERNAL AREA	sqm 91	sqft 980
BALCONY	sqm 26 - 28	sqft 279 - 302
TOTAL	sqm 117 - 119	sqft 1,259 - 1,281

Disclaimer: All pictures, plans, layouts, information, data and details included in this brochure are indicative only and may change at any time up to the final 'as built' status in accordance with final designs of the project, regulatory approvals and planning permissions. All accessories and interior finishes such as wallpaper, chandeliers, furniture, electronics, white goods, curtains, hard and soft landscaping, pavements, features, gym, swimming pool(s) and other elements displayed in the brochure, or within the show apartment or between the plot boundary and the unit, are not part of the unit and are shown for illustrative purposes only.

2 - BEDS
TYPE 02

LEVELS
1 - 19

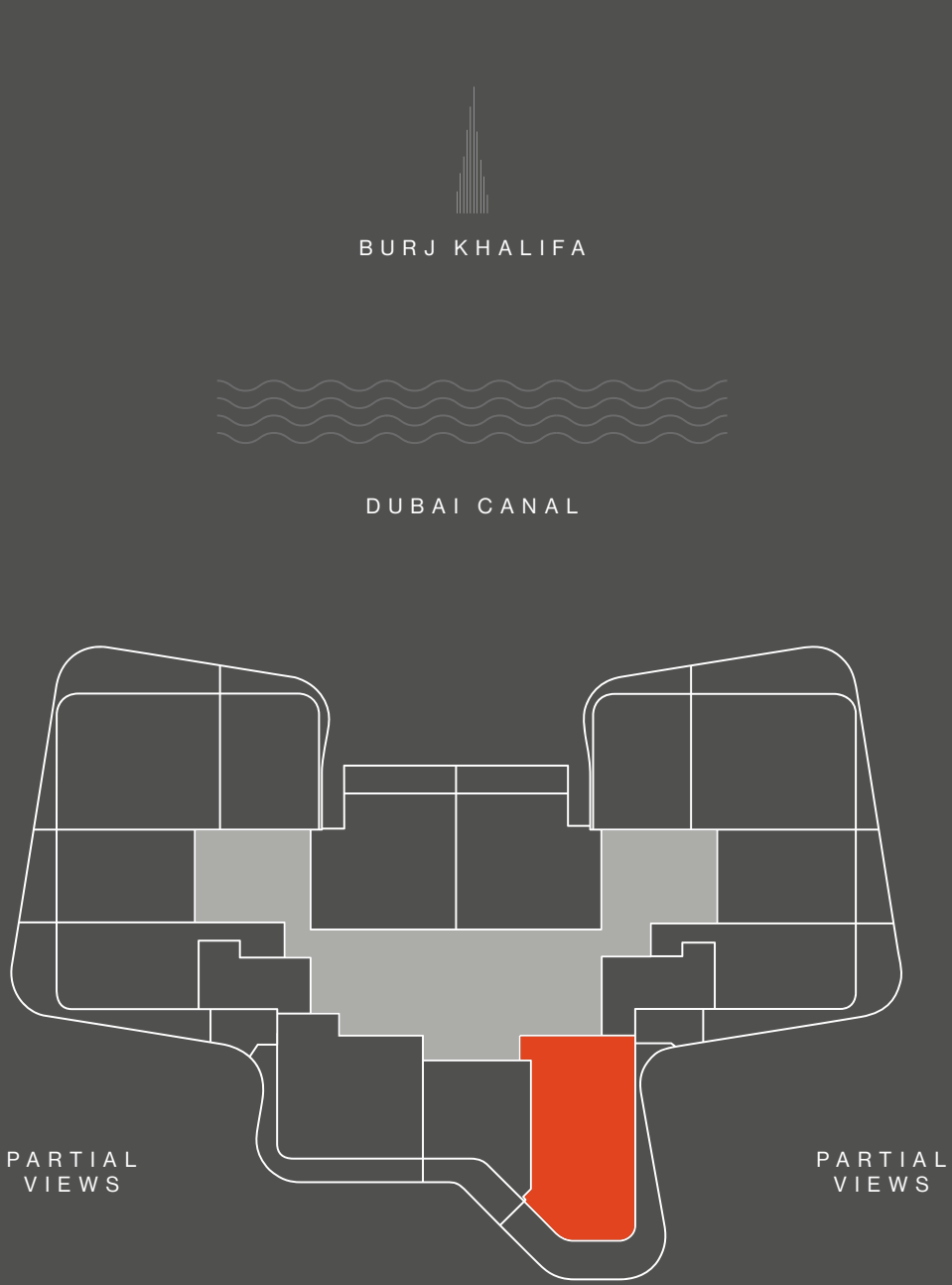


INTERNAL AREA	sqm 92	sqft 990
BALCONY	sqm 14	sqft 151
TOTAL	sqm 106	sqft 1,141

Disclaimer: All pictures, plans, layouts, information, data and details included in this brochure are indicative only and may change at any time up to the final 'as built' status in accordance with final designs of the project, regulatory approvals and planning permissions. All accessories and interior finishes such as wallpaper, chandeliers, furniture, electronics, white goods, curtains, hard and soft landscaping, pavements, features, gym, swimming pool(s) and other elements displayed in the brochure, or within the show apartment or between the plot boundary and the unit, are not part of the unit and are shown for illustrative purposes only.

2 - BEDS
TYPE 03

LEVELS
1 - 15



INTERNAL AREA	sqm 107	sqft 1,152
BALCONY	sqm 39 - 46	sqft 420 - 495
TOTAL	sqm 146 - 153	sqft 1,572 - 1,647

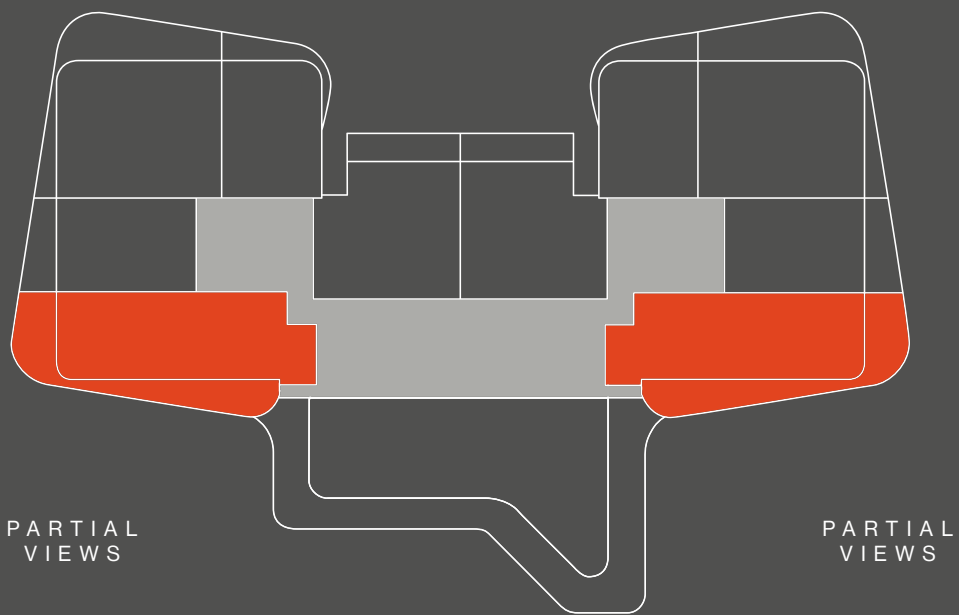
Disclaimer: All pictures, plans, layouts, information, data and details included in this brochure are indicative only and may change at any time up to the final 'as built' status in accordance with final designs of the project, regulatory approvals and planning permissions. All accessories and interior finishes such as wallpaper, chandeliers, furniture, electronics, white goods, curtains, hard and soft landscaping, pavements, features, gym, swimming pool(s) and other elements displayed in the brochure, or within the show apartment or between the plot boundary and the unit, are not part of the unit and are shown for illustrative purposes only.

2 - BEDS
TYPE 04

LEVEL
16

BURJ KHALIFA

DUBAI CANAL



CITY VIEWS

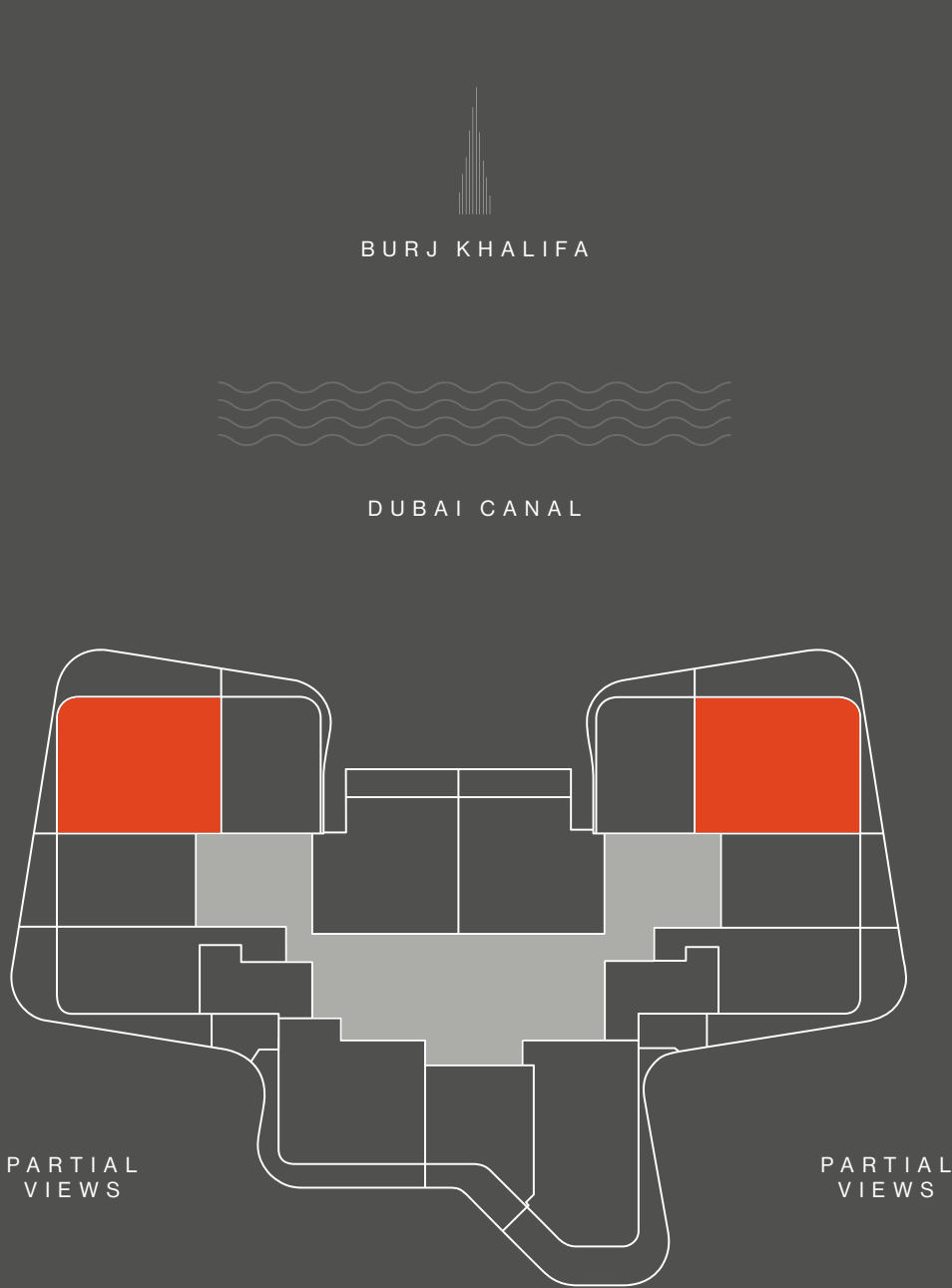


INTERNAL AREA	sqm 107	sqft 1,152
BALCONY	sqm 39 - 46	sqft 420 - 495
TOTAL	sqm 146 - 153	sqft 1,572 - 1,647

Disclaimer: All pictures, plans, layouts, information, data and details included in this brochure are indicative only and may change at any time up to the final 'as built' status in accordance with final designs of the project, regulatory approvals and planning permissions. All accessories and interior finishes such as wallpaper, chandeliers, furniture, electronics, white goods, curtains, hard and soft landscaping, pavements, features, gym, swimming pool(s) and other elements displayed in the brochure, or within the show apartment or between the plot boundary and the unit, are not part of the unit and are shown for illustrative purposes only.

3 - BEDS
TYPE 01

LEVELS
1 - 19



INTERNAL AREA	sqm 112	sqft 1,206
BALCONY	sqm 35 - 53	sqft 376 - 570
TOTAL	sqm 147 - 165	sqft 1,582 - 1,776

Disclaimer: All pictures, plans, layouts, information, data and details included in this brochure are indicative only and may change at any time up to the final 'as built' status in accordance with final designs of the project, regulatory approvals and planning permissions. All accessories and interior finishes such as wallpaper, chandeliers, furniture, electronics, white goods, curtains, hard and soft landscaping, pavements, features, gym, swimming pool(s) and other elements displayed in the brochure, or within the show apartment or between the plot boundary and the unit, are not part of the unit and are shown for illustrative purposes only.

REGISTER



YOUR INTEREST



[DARGLOBAL.CO.UK/DG1/](https://darglobal.co.uk/dg1/)



DarGlobal PLC is an international real estate developer specializing in exclusive luxury developments across the world's most coveted cosmopolitan cities .

Catering to global citizens seeking prime investments, second homes, and luxury living, DarGlobal transforms real estate into economic catalysts, unlocking opportunities for both investors and the countries it enters.

DarGlobal has partnered with over 10 world-renowned luxury brands, including Trump Organization, Aston Martin, Automobili Lamborghini, ELIE SAAB, Marriott Residences, Missoni, Mouawad, Pagani Automobili, W Hotels, and Versace. These collaborations offer unique investment opportunities in global cities, providing both wealth growth and protection.

Listed on the London Stock Exchange, DarGlobal goes beyond property development, it drives economic transformation by attracting international clients and Foreign Direct Investment (FDI). By injecting capital, confidence, and industry expertise, DarGlobal enhances local infrastructure while elevating the global appeal of each destination.

With a presence in 14 international cities across 9 countries, DarGlobal's portfolio spans the United Kingdom, Spain, Greece, Saudi Arabia, the UAE, Oman, and Qatar. The company is also expanding into world-class hospitality, developing luxury hotels in Dubai, the Maldives, and Oman.

To support its international clientele, DarGlobal has sales and customer service offices in New York, London, Marbella, Athens, Dubai, Jeddah, Riyadh, Muscat, and Doha.



**LONDON
STOCK
EXCHANGE**



OUR OFFICES



DUBAI, UAE

Jumeirah Emirates Towers
30th Floor, Sheikh Zayed Road.
PO Box 2523, Dubai,
United Arab Emirates
T +971 4562 9616

LONDON, UK

50 Hans Crescent,
Knightsbridge, London,
SW1X 0NA, United Kingdom
T +44 20 8135 4699

MARBELLA, SPAIN

Marbella Club Golden Mile,
Av. Bulevar Príncipe Alfonso
de Hohenlohe, Marbella 29602,
Málaga, Spain
T +34 95112 1221

MUSCAT, OMAN

Royal Opera House Muscat
Shatti Al Qurum, Muscat,
Sultanate of Oman
T +968 2270 2771

DOHA, QATAR

Malibu Building,
Lusail Entertainment City,
Doha, Qatar
T +974 44108282

RIYADH, KSA

2135 Tahlia St.,
Al Olaya, 12222, Riyadh,
Kingdom of Saudi Arabia
T +966 800 118 808

JEDDAH, KSA

Ash Shati, 23613,
King Abdulaziz Road, Jeddah,
Kingdom of Saudi Arabia
T +966 800 118 808

NEW YORK CITY, USA

19th floor - Trump Tower
New York, 725 5th Ave,
NY 10022, USA
T +1 212 715 1067

For more information on DG1
please call +971 4562 9616 (UAE)

You can visit our website at darglobal.co.uk
or via our social media platforms



DARGLOBAL.CO.UK