

**DAR**  
GLOBAL

TOWER  
**DA VINCI**  
Interiors by  
PAGANI

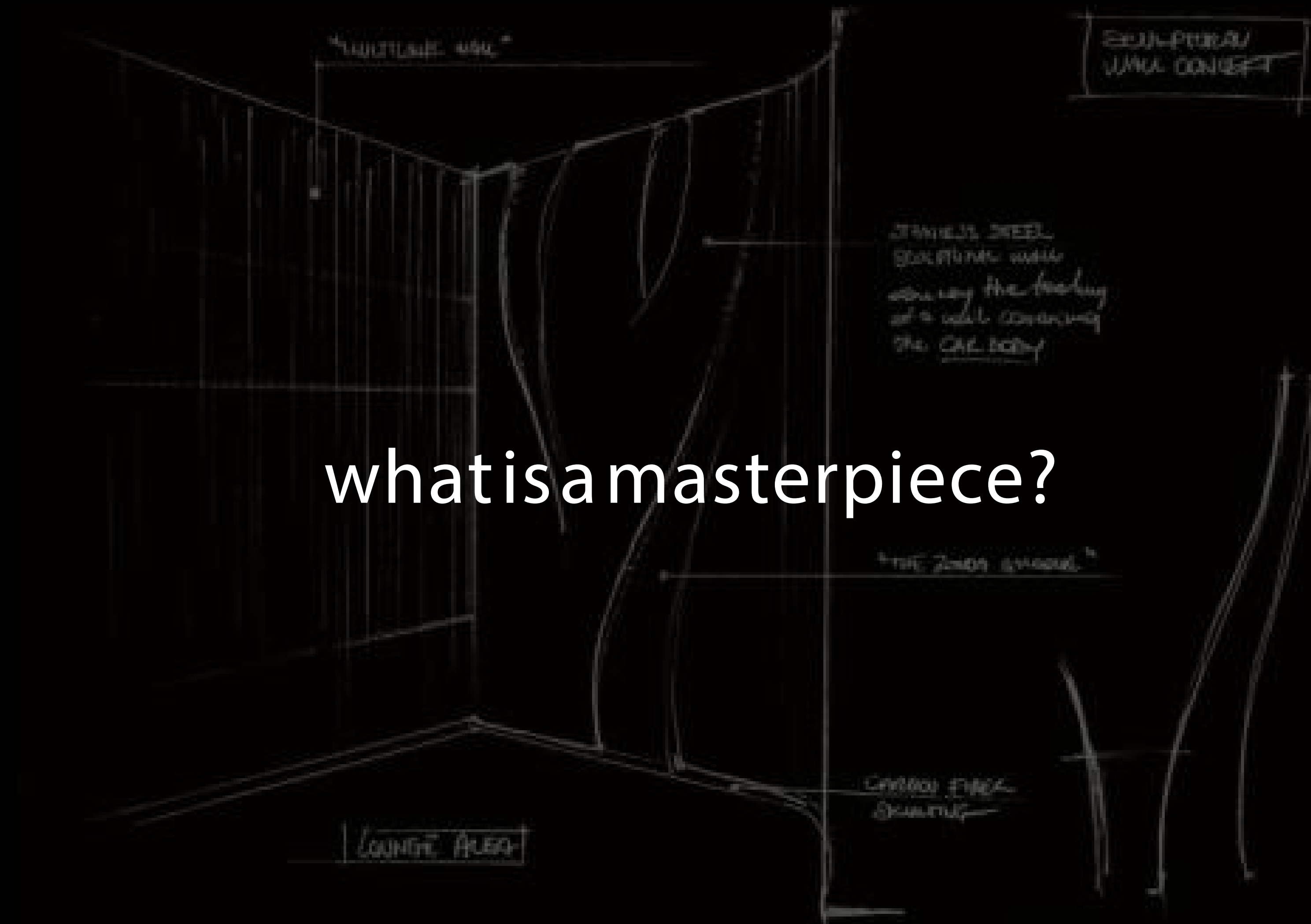
Located in J One Tower B



“Art and science are disciplines  
that can walk hand in hand”

Leonardo Da Vinci

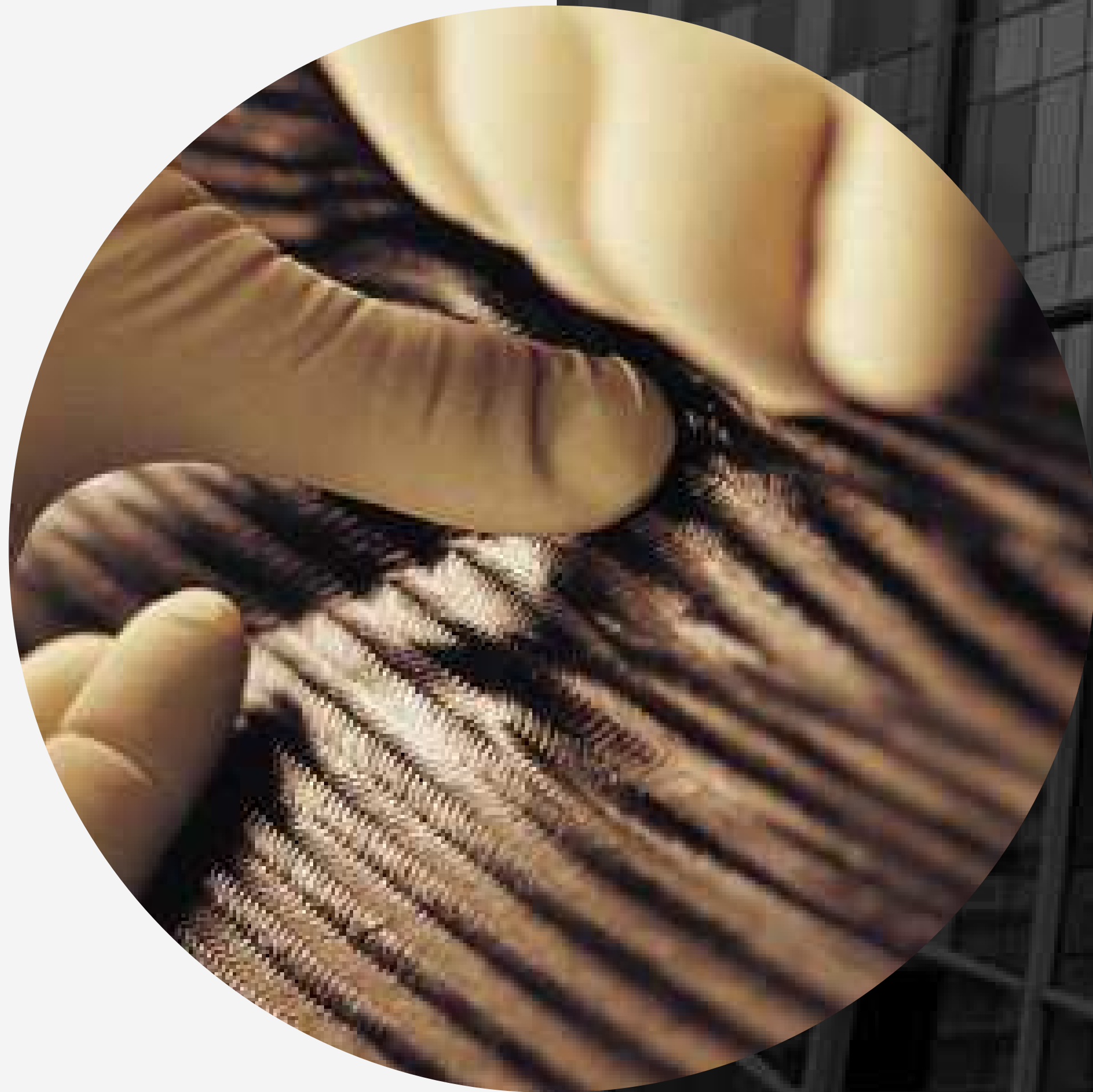
what is a masterpiece?



Is it magnetic *beauty* made of sinuous lines?







Is it tailor-made *details* crafted  
to extreme perfection?



It is all of it. And way more.

# Creatures *of* Art

---



Horacio Pagani had a dream, and his dream was to create the most beautiful car in the world. Not only he succeeded, but he created a universe that goes beyond the automotive field, a dimension that only few can aspire to. With Leonardo Da Vinci's intuition in mind, Horacio blended beauty and function together, giving life to the unprecedented world of Pagani.





# THE SHAPE OF *speed*

---

The first residences in the world by Pagani are brought to life in a unique tower. Designed to make heads turn, the building is comprised of an instability of lines, a strong uneven approach, transparency and hidden balances creating a dynamic effect like no other. And when you get closer that you discover the pearl, an incredible suspended sphere that looks as though it defies gravity. The tower is a true geometric symphony of perfection with 19 floors of residential masterpieces, 3 basement levels and a majestic ground floor.



# At the core of *contemporaneity*

Dubai is likely becoming the art capital of the 21st century. Home to the most prominent exhibitions, fashion shows, arts and cultural events, DaVinci Tower sits at the heart of it all.

The building is directly by the Dubai Canal, overlooking the world's tallest building Burj Khalifa and a stone throw away from Marasi Business Bay. A prime location filled with a unique mix of aesthetic residential and commercial towers, attracting the most affluent people from around the world.

# Location

DIRECTLY ON  
**THE DUBAI CANAL**

A 3.2 km long tourist landmark

5 MINUTES  
**THE DUBAI MALL**

The world's largest retail & entertainment destination

4 MINUTES  
**THE DUBAI FOUNTAIN**

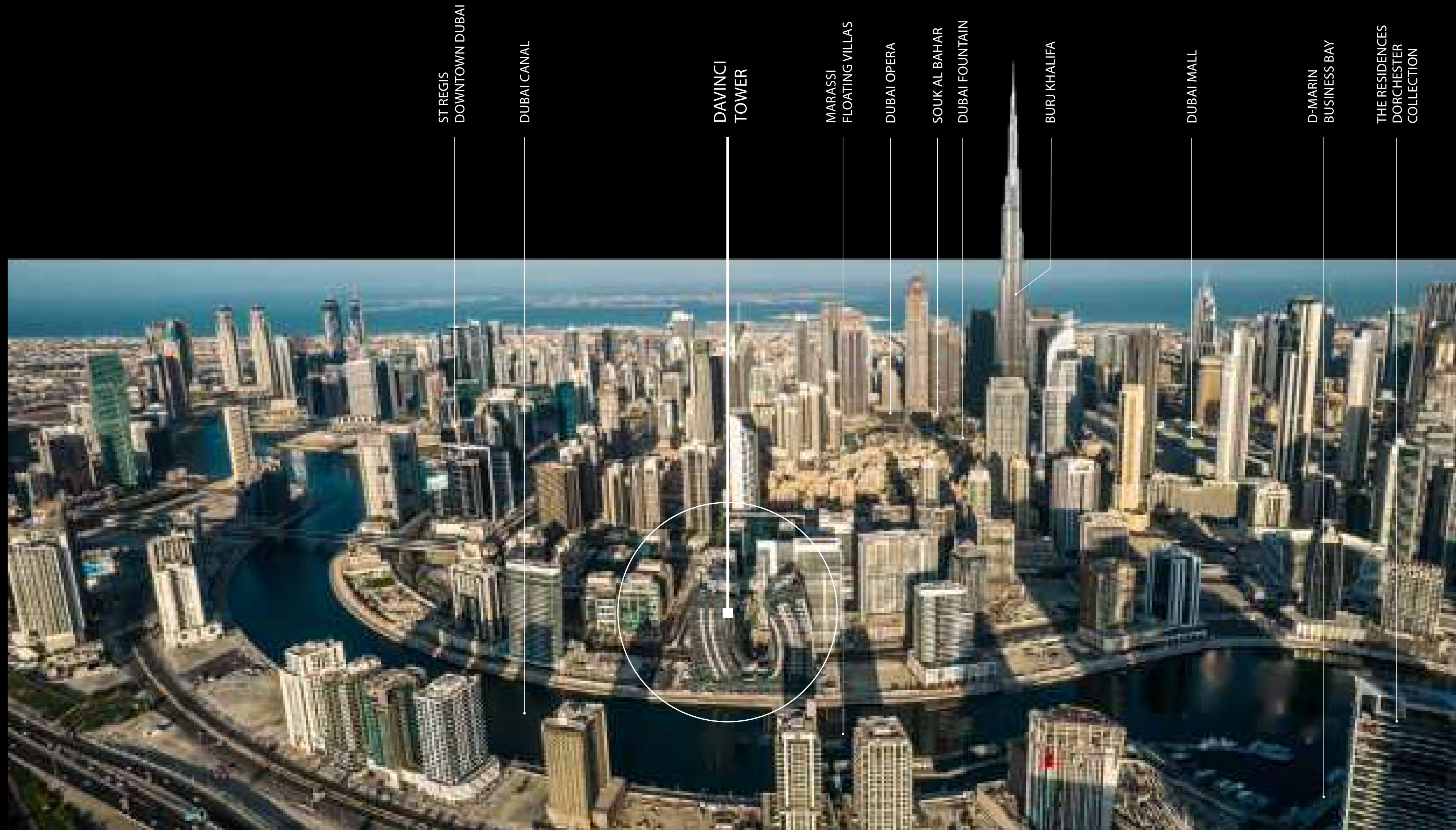
The world's tallest performing fountain with a captivating water, music & light spectacle

7 MINUTE  
**BURJ KHALIFA**

The world's tallest building

7 MINUTES  
**THE DUBAI OPERA**

2,000 seat multi-format venue



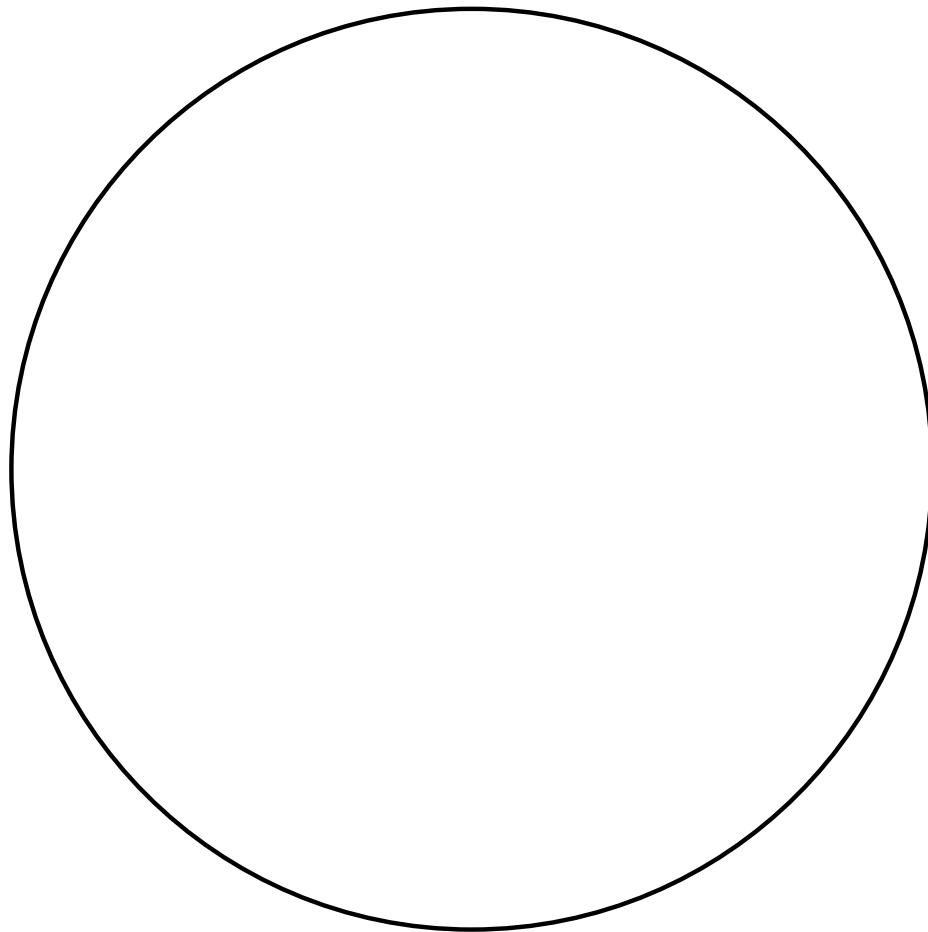
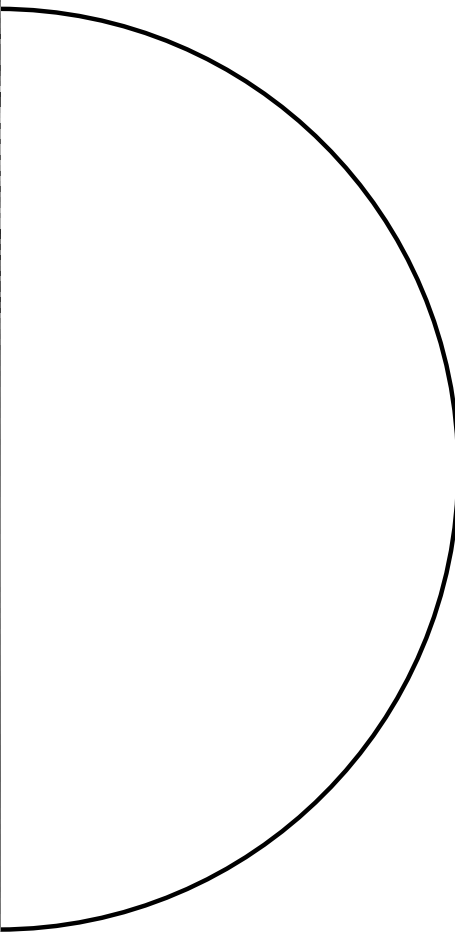
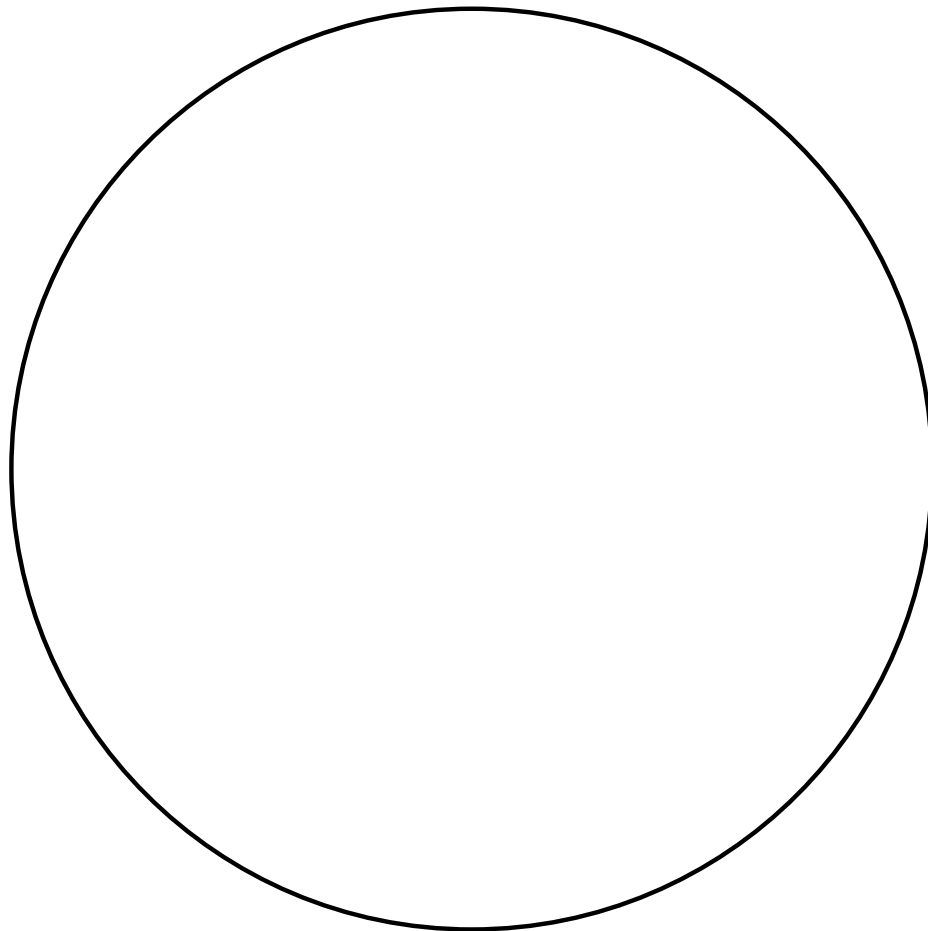
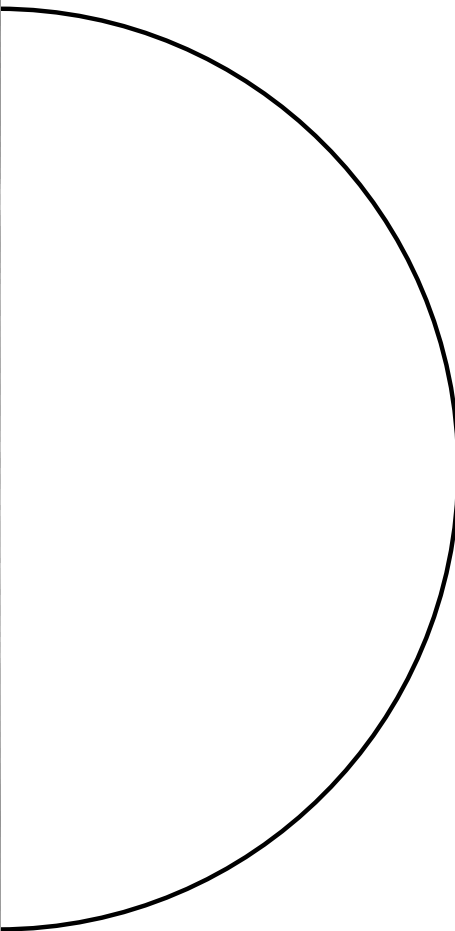
# Breathtaking *views*

---

The building sits in a strategic location, letting you enjoy the best of Dubai's panoramas. On the south-east side you can indulge in the soothing views of the water, the canal, the floating villas and Business bay. On the north side, Burj Khalifa stands just outside of your window.







# Living *above luxury*

---

For the first time in the world, Pagani's essence takes the shape of a living space: DaVinci Tower is a residential building in downtown Dubai with interiors designed by Pagani. Every detail is crafted to obsession, every material is of the finest quality, every line is designed with taste and harmony, resulting in the unique experience of inhabiting a masterpiece.









# Art elevates *life*

The magnificent residences set new standards for human living.

The expansive 2 - 4 bedroom marble homes are designed with private outdoor spaces and open flowing light-filled interiors, with panoramic views of the canal and Downtown Dubai. Arrive at your doorstep with luxurious elevators dedicated to residents and guests only, then make yourself at home with advanced domotics that responds to any of your desires.





## The Steel Atrium

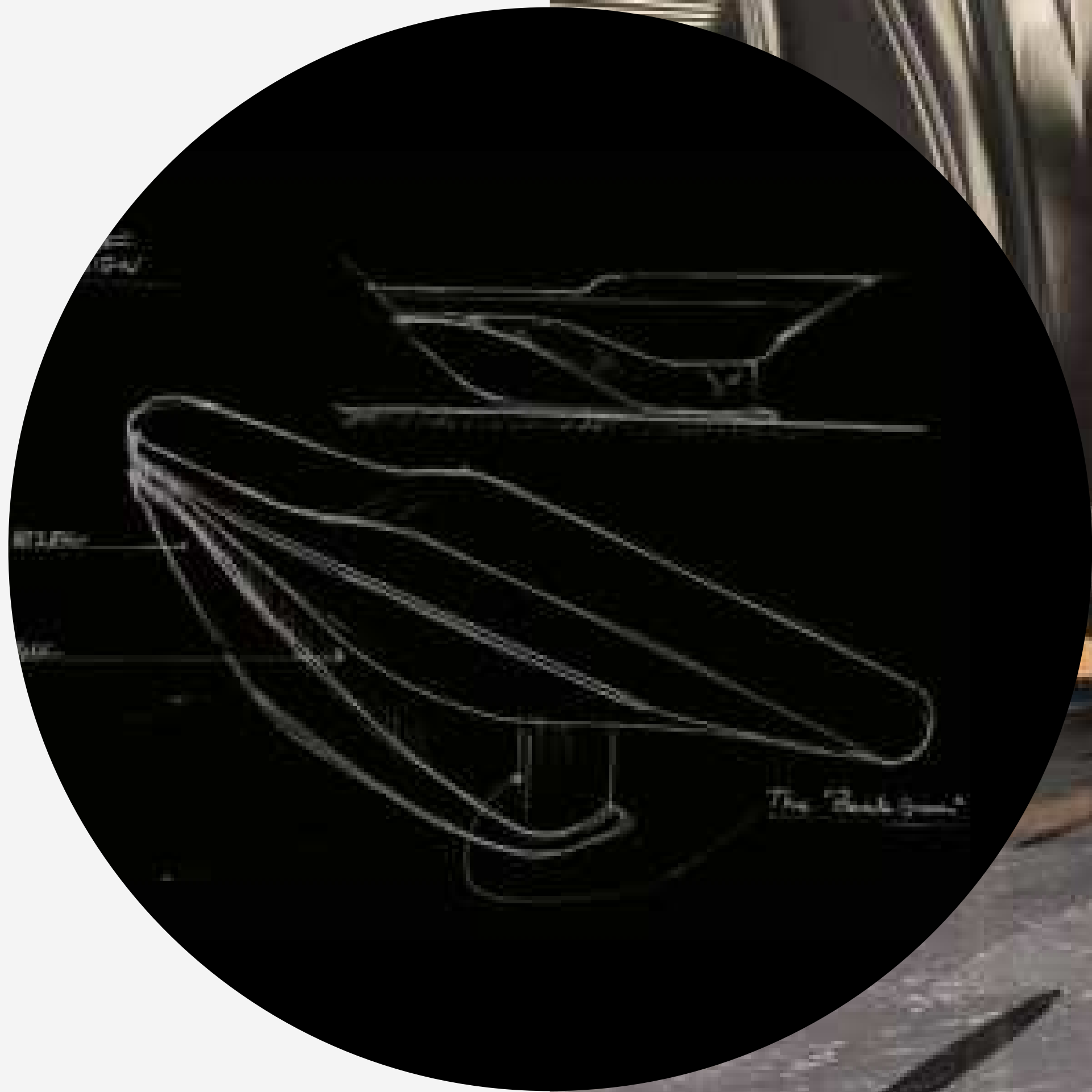
# *Beauty* is a sharp blade

---

Inspired by the sinuous curves of Pagani Design, the Steel Atrium represents the epitome of art and luxury. From the moment you walk in, you are plunged in a masterpiece made of stainless steel, carbon fibers, lush leather and kinetic chandeliers, where the beauty of engineering evokes the most prestigious lifestyle.









## The pool

# *Dive* into calmness

Peace of mind is within reach when you are surrounded by harmony and balance. Imagine a relaxing heaven where every shape is designed to please your senses: discover the pool area at the top of the tower, an urban jungle to refresh your ideas after a busy day.





# Conciergerie, *crafted*

---

Nothing is left behind when you live in a world of exclusivity. The residential services will meet any of your desires: our highly professional team will be available 24/7 to help you with housekeeping, arranging dinner plans or making the reservations you need.





# *Inspired* to well-being

---

Keep yourself fit and healthy, without having to leave your home. You can workout in a modern gym with the newest equipments and plenty of space to exercise. A great way to start your day, or to end it.











# Residences specifications

## Foyer – Living Area – Dining Area

Marble flooring and skirting  
Gypsum ceiling finished with paint  
Paint with accent wallpaper  
Wood paneling in selected areas

## Kitchen

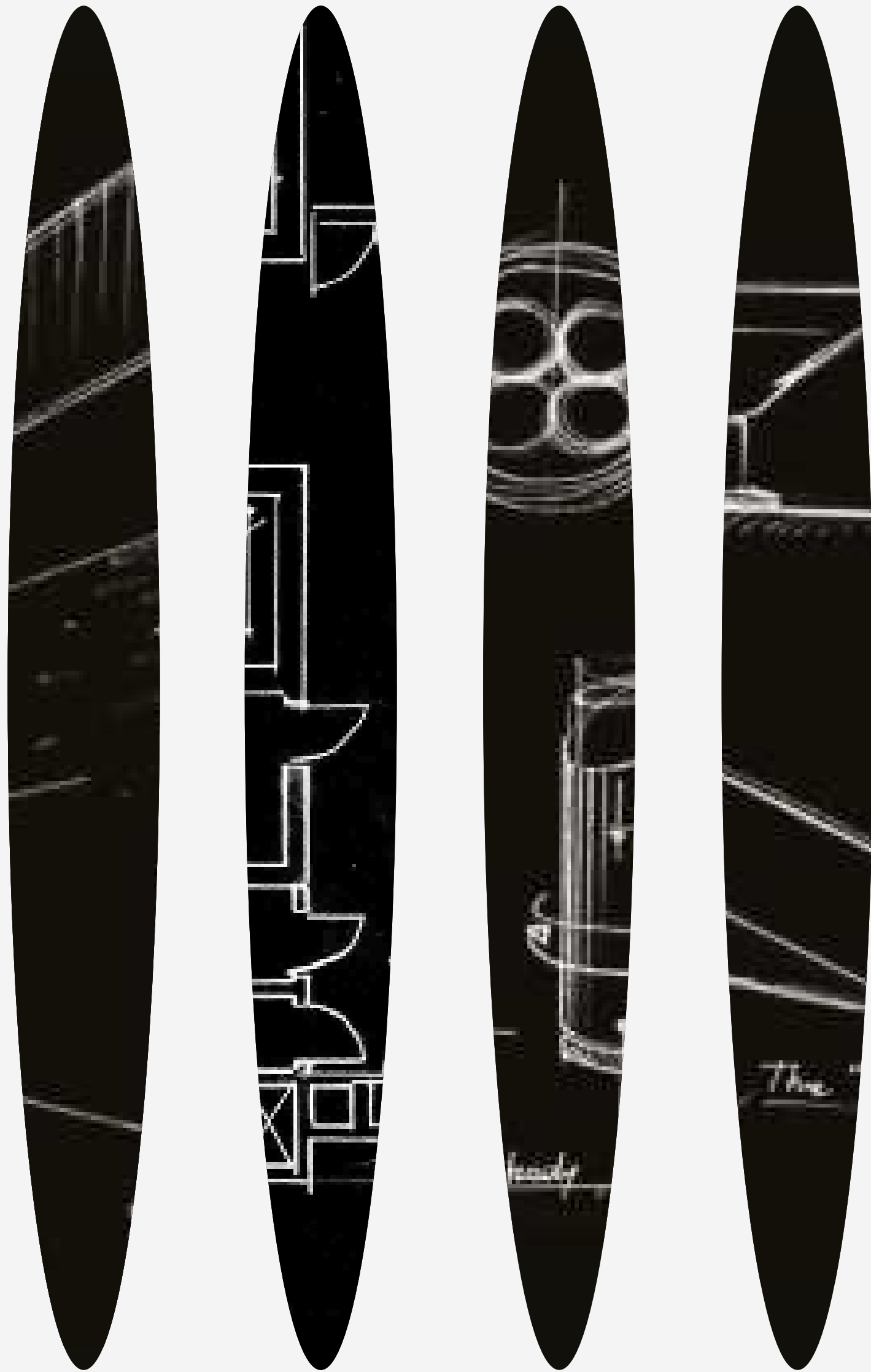
Marble flooring and skirting  
Paint and quartz walls  
Gypsum ceiling finished with paint  
Silestone high quality quartz counter top  
Lacquered paint cabinets  
Fridge, Oven, Hob, Hood, Microwave,  
Dishwasher, Washing Machine,  
Beverage Cooler  
Miele, Bosch Premium Line or Equivalent

## Bedrooms

Semi Engineered wood flooring and skirting  
Paint with accent wallpaper  
Gypsum ceiling finished with paint  
Built-in lacquered joinery

## Bathrooms

Marble flooring and skirting  
Marble / wallpaper walls  
Moisture resistant gypsum ceiling finished with paint  
Marble counter top  
Lacquered / Veneer joinery  
Gessi, Newform or equivalent  
sanitary fixtures  
Kohler, Duravit, Geberit or equivalent  
sanitaryware



# Floor plans

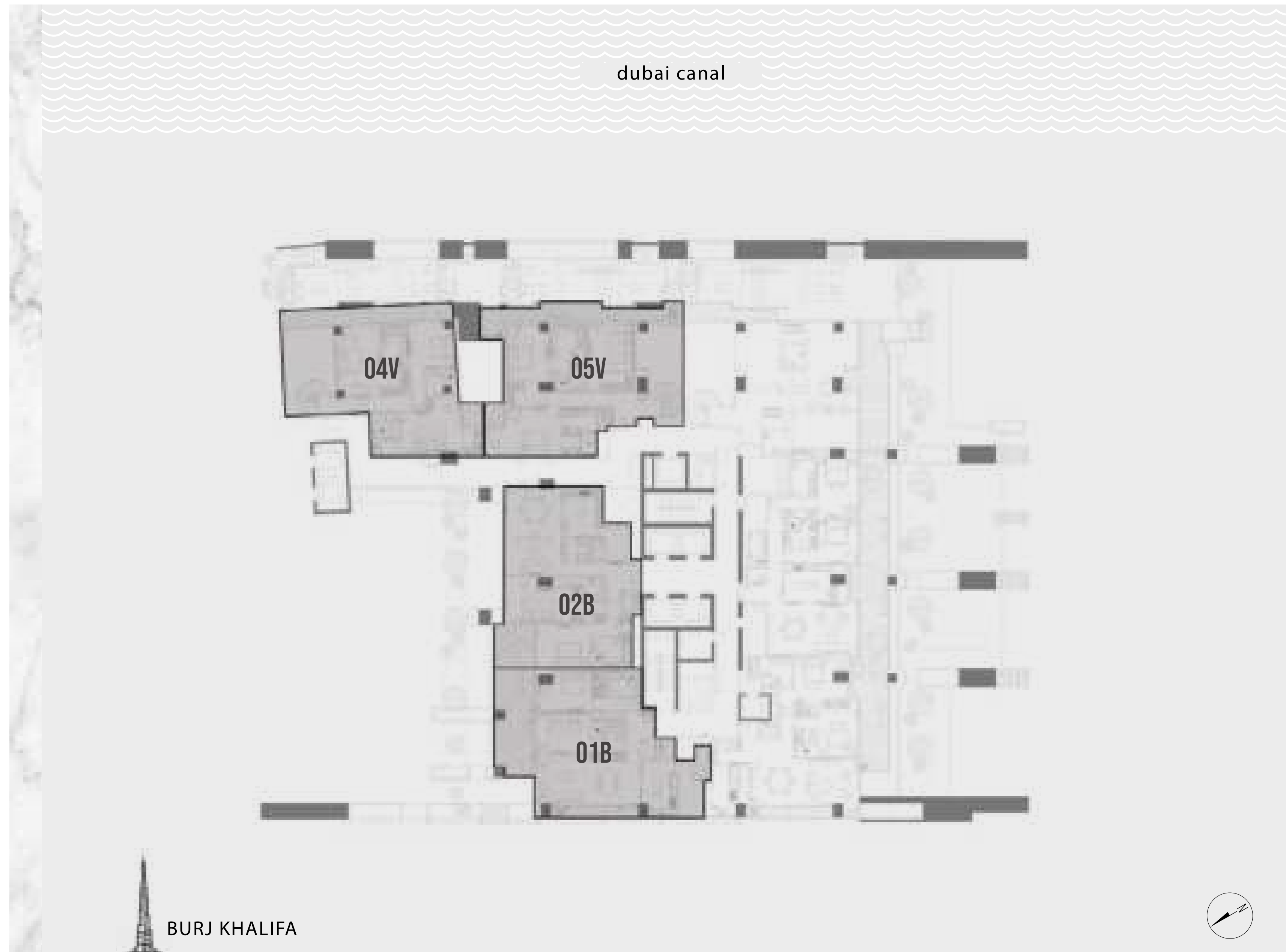


DAVINCI tower

# FLOOR 1

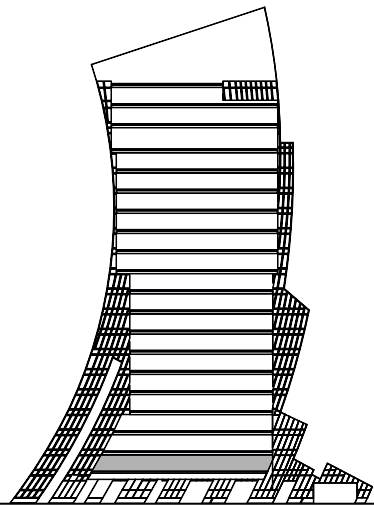
- LAYOUT PLAN -

All pictures, plans, layouts, information, data and details included in this brochure are indicative only and may change at any time up to the final 'as built' status in accordance with final designs of the project, regulatory approvals and planning permissions. All accessories and interior finishes such as wall paper, chandeliers, furniture, electronics, white goods, curtains, hard and soft landscaping, pavements, features, gym, swimming pool(s) and other elements displayed in the brochure, or within the show apartment or between the plot boundary and the unit, are not part of the unit and are shown for illustrative purposes only.



# 2 bedroomS

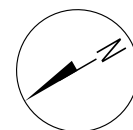
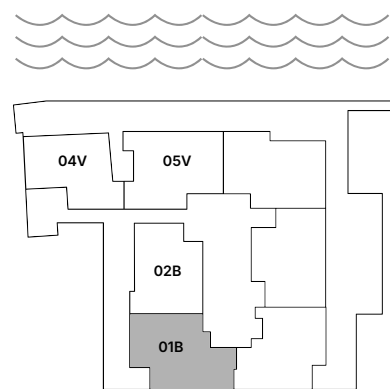
– 01 SERIES –



FLOOR

1

Suite Area	1,739.77 sq.ft.
Balcony Area	797.50 sq.ft.
<b>Total Area</b>	<b>2,537.27 sq.ft.</b>



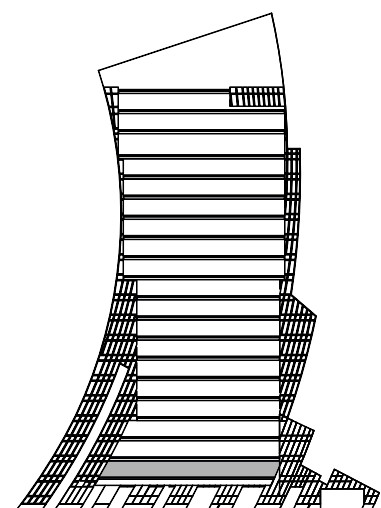
All pictures, plans, layouts, information, data and details included in this brochure are indicative only and may change at any time up to the final 'as built' status in accordance with final designs of the project, regulatory approvals and planning permissions. All accessories and interior finishes such as wallpaper, chandeliers, furniture, electronics, white goods, curtains, hard and soft landscaping, pavements, features, gym, swimming pool(s) and other elements displayed in the brochure, or within the show apartment or between the plot boundary and the unit, are not part of the unit and are shown for illustrative purposes only.





# 2 bedroomS

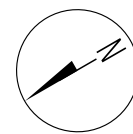
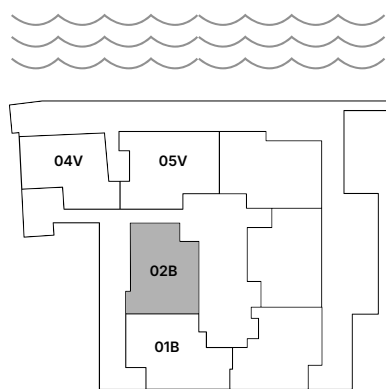
– 02 SERIES –



FLOOR

1

Suite Area	1,701.56 sq.ft.
Balcony Area	608.05 sq.ft.
<b>Total Area</b>	<b>2,309.61 sq.ft.</b>

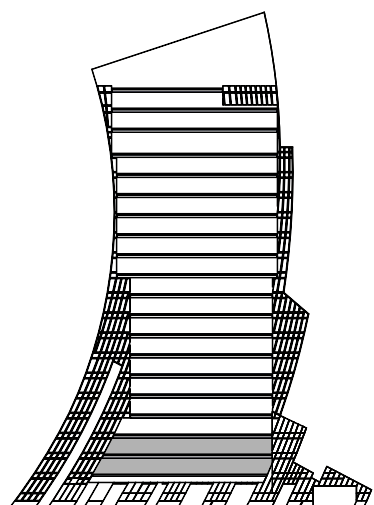


All pictures, plans, layouts, information, data and details included in this brochure are indicative only and may change at any time up to the final 'as built' status in accordance with final designs of the project, regulatory approvals and planning permissions. All accessories and interior finishes such as wallpaper, chandeliers, furniture, electronics, white goods, curtains, hard and soft landscaping, pavements, features, gym, swimming pool(s) and other elements displayed in the brochure, or within the show apartment or between the plot boundary and the unit, are not part of the unit and are shown for illustrative purposes only.



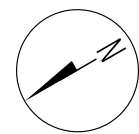
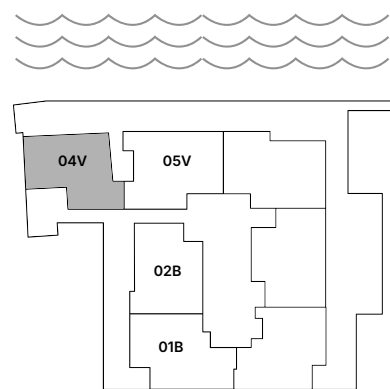
4 bedroomS  
DUPLEX

– 04 SERIES –



FLOORS  
1 & 2

Suite Area	3,083 sq.ft.
Balcony Area	1,278 sq.ft.
<b>Total Area</b>	<b>4,362 sq.ft.</b>



All pictures, plans, layouts, information, data and details included in this brochure are indicative only and may change at any time up to the final 'as built' status in accordance with final designs of the project, regulatory approvals and planning permissions. All accessories and interior finishes such as wallpaper, chandeliers, furniture, electronics, white goods, curtains, hard and soft landscaping, pavements, features, gym, swimming pool(s) and other elements displayed in the brochure, or within the show apartment or between the plot boundary and the unit, are not part of the unit and are shown for illustrative purposes only.



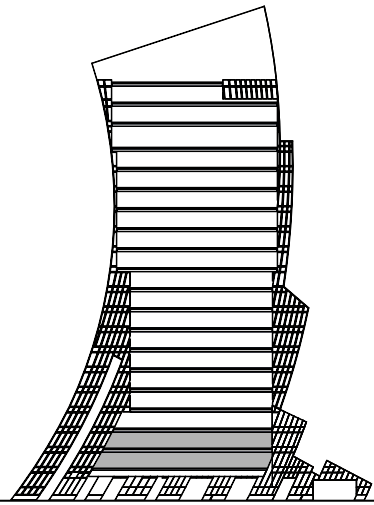
LOWER LEVEL



UPPER LEVEL

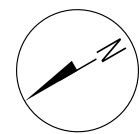
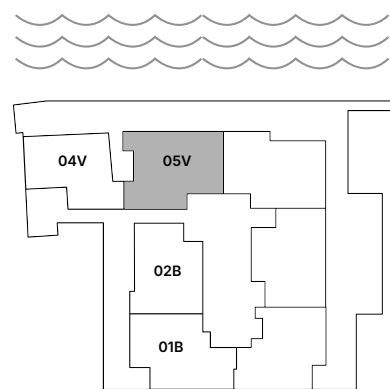
# 3 bedroomS DUPLEX

– 05 SERIES –

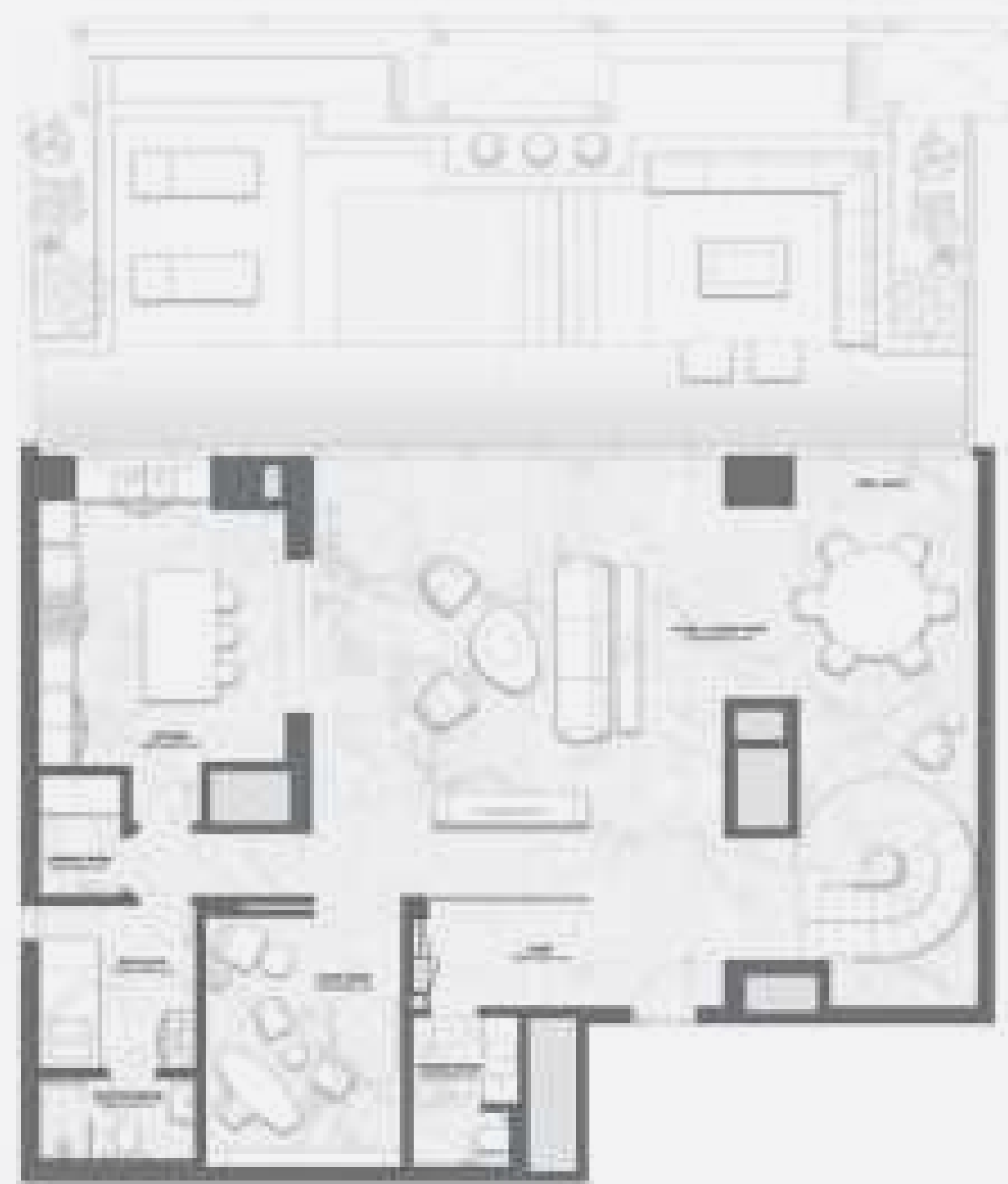


## FLOORS 1 & 2

Suite Area	3,258 sq.ft.
Balcony Area	1,311 sq.ft.
<b>Total Area</b>	<b>4,569 sq.ft.</b>



All pictures, plans, layouts, information, data and details included in this brochure are indicative only and may change at any time up to the final 'as built' status in accordance with final designs of the project, regulatory approvals and planning permissions. All accessories and interior finishes such as wall paper, chandeliers, furniture, electronics, white goods, curtains, hard and soft landscaping, pavements, features, gym, swimming pool(s) and other elements displayed in the brochure, or within the show apartment or between the plot boundary and the unit, are not part of the unit and are shown for illustrative purposes only.



LOWER LEVEL



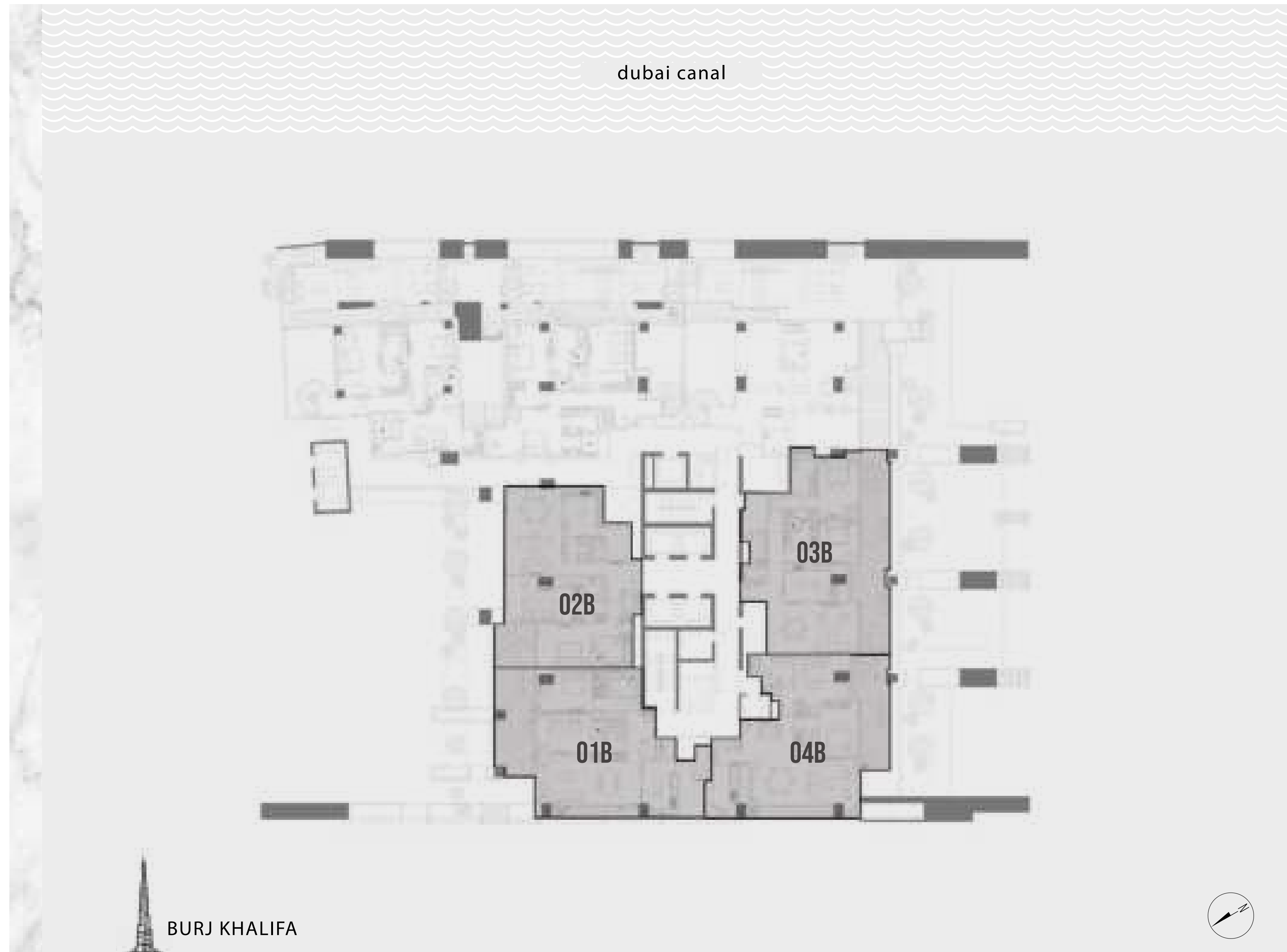
UPPER LEVEL

DAVINCI tower

# FLOOR 2

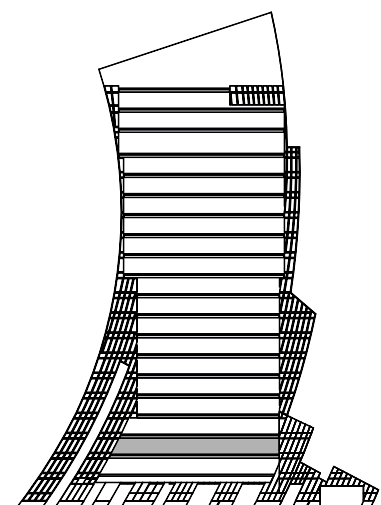
- LAYOUT PLAN -

All pictures, plans, layouts, information, data and details included in this brochure are indicative only and may change at any time up to the final 'as built' status in accordance with final designs of the project, regulatory approvals and planning permissions. All accessories and interior finishes such as wall paper, chandeliers, furniture, electronics, white goods, curtains, hard and soft landscaping, pavements, features, gym, swimming pool(s) and other elements displayed in the brochure, or within the show apartment or between the plot boundary and the unit, are not part of the unit and are shown for illustrative purposes only.



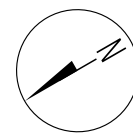
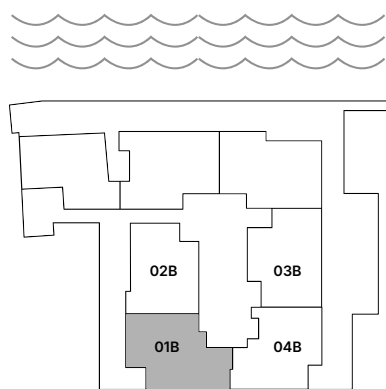
# 2 bedroomS

– 01 SERIES –



## FLOOR 2

Suite Area	1,562 sq.ft.
Balcony Area	412 sq.ft.
<b>Total Area</b>	<b>1,975 sq.ft.</b>



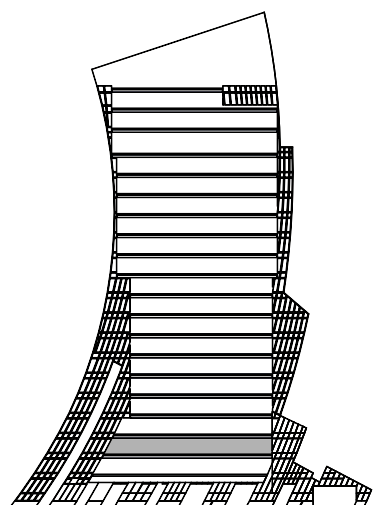
All pictures, plans, layouts, information, data and details included in this brochure are indicative only and may change at any time up to the final 'as built' status in accordance with final designs of the project, regulatory approvals and planning permissions. All accessories and interior finishes such as wallpaper, chandeliers, furniture, electronics, white goods, curtains, hard and soft landscaping, pavements, features, gym, swimming pool(s) and other elements displayed in the brochure, or within the show apartment or between the plot boundary and the unit, are not part of the unit and are shown for illustrative purposes only.





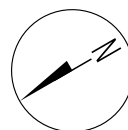
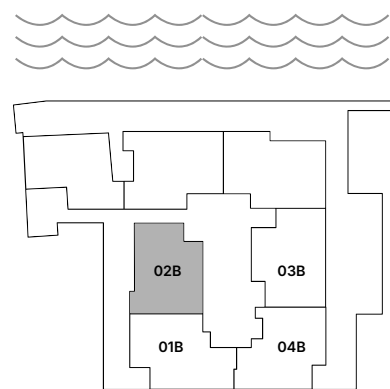
# 2 bedroomS

– 02 SERIES –



## FLOOR 2

Suite Area	1,710.17 sq.ft.
Balcony Area	137.89 sq.ft.
<b>Total Area</b>	<b>1,848.06 sq.ft.</b>

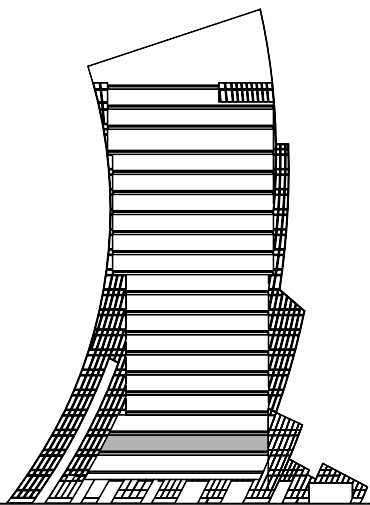


All pictures, plans, layouts, information, data and details included in this brochure are indicative only and may change at any time up to the final 'as built' status in accordance with final designs of the project, regulatory approvals and planning permissions. All accessories and interior finishes such as wallpaper, chandeliers, furniture, electronics, white goods, curtains, hard and soft landscaping, pavements, features, gym, swimming pool(s) and other elements displayed in the brochure, or within the show apartment or between the plot boundary and the unit, are not part of the unit and are shown for illustrative purposes only.



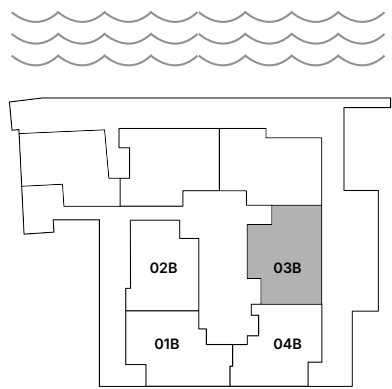
2 bedroomS

– 03 SERIES –



FLOOR  
2

Suite Area	1,575.62 sq.ft.
Balcony Area	508.59 sq.ft.
<b>Total Area</b>	<b>2,084.21 sq.ft.</b>

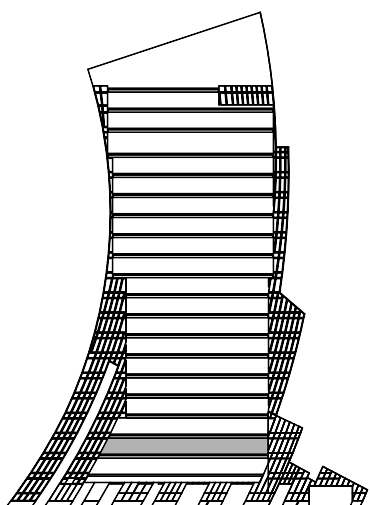


All pictures, plans, layouts, information, data and details included in this brochure are indicative only and may change at any time up to the final 'as built' status in accordance with final designs of the project, regulatory approvals and planning permissions. All accessories and interior finishes such as wallpaper, chandeliers, furniture, electronics, white goods, curtains, hard and soft landscaping, pavements, features, gym, swimming pool(s) and other elements displayed in the brochure, or within the show apartment or between the plot boundary and the unit, are not part of the unit and are shown for illustrative purposes only.



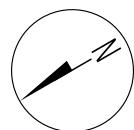
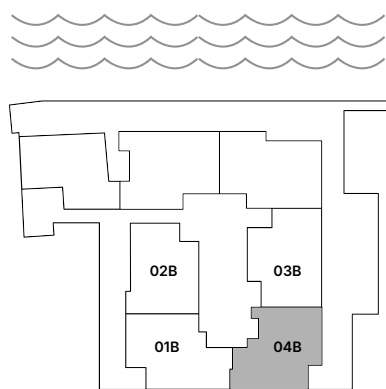
# 2 bedroomS

– 04 SERIES –



## FLOOR 2

Suite Area	1,473.58 sq.ft.
Balcony Area	384.38 sq.ft.
<b>Total Area</b>	<b>1,857.96 sq.ft.</b>



All pictures, plans, layouts, information, data and details included in this brochure are indicative only and may change at any time up to the final 'as built' status in accordance with final designs of the project, regulatory approvals and planning permissions. All accessories and interior finishes such as wallpaper, chandeliers, furniture, electronics, white goods, curtains, hard and soft landscaping, pavements, features, gym, swimming pool(s) and other elements displayed in the brochure, or within the show apartment or between the plot boundary and the unit, are not part of the unit and are shown for illustrative purposes only.

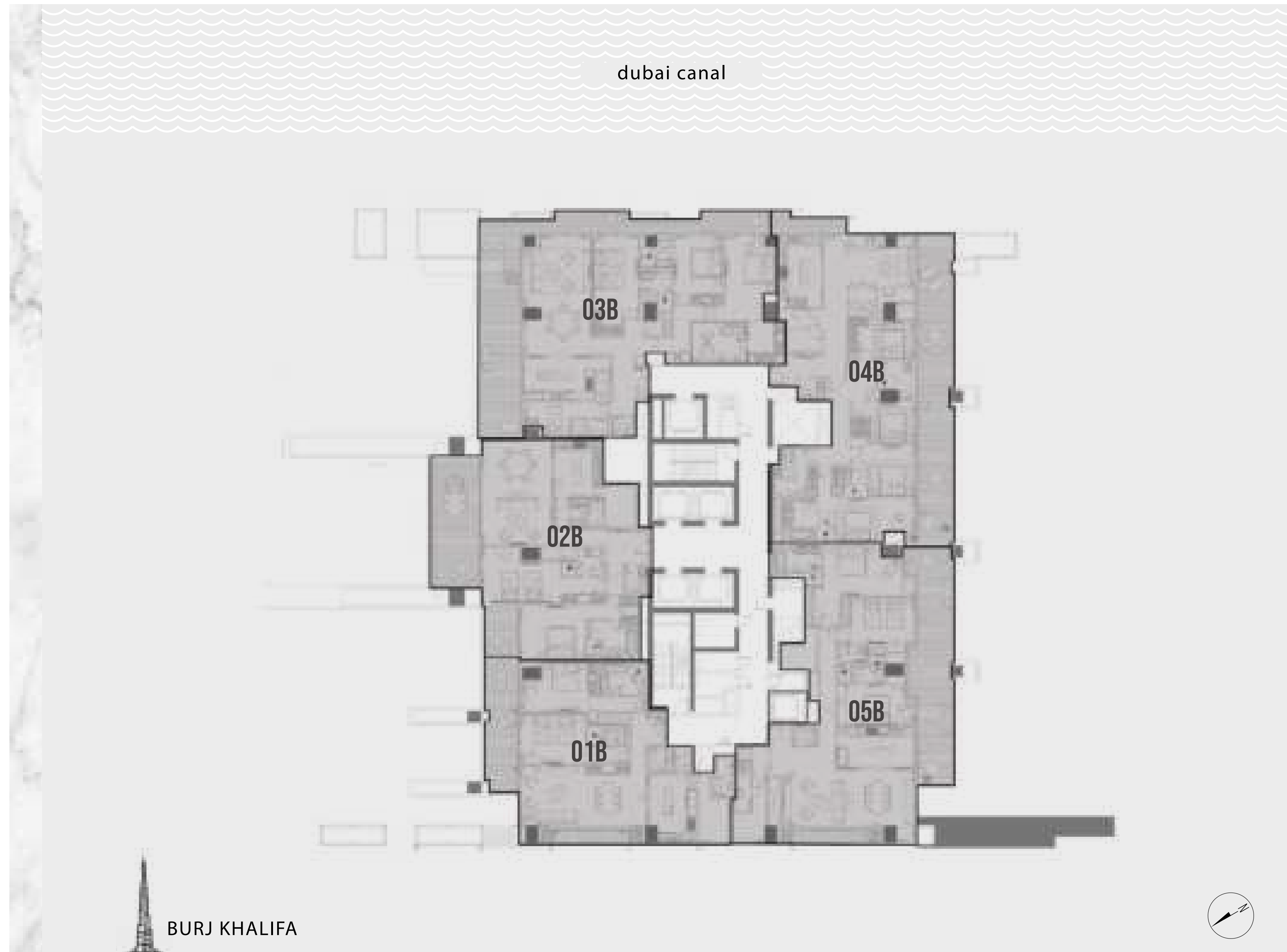


DAVINCI tower

# FLOORs3—10

- LAYOUT PLAN -

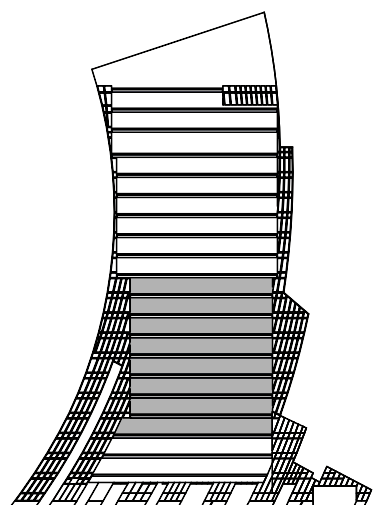
All pictures, plans, layouts, information, data and details included in this brochure are indicative only and may change at any time up to the final 'as built' status in accordance with final designs of the project, regulatory approvals and planning permissions. All accessories and interior finishes such as wall paper, chandeliers, furniture, electronics, white goods, curtains, hard and soft landscaping, pavements, features, gym, swimming pool(s) and other elements displayed in the brochure, or within the show apartment or between the plot boundary and the unit, are not part of the unit and are shown for illustrative purposes only.





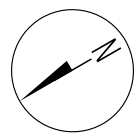
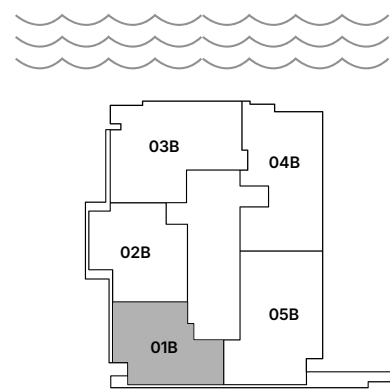
# 2 bedroomS

– 01 SERIES –



FLOORS  
3 to 10

Suite Area	1,575 - 1,579 sq.ft.
Balcony Area	209 - 360 sq.ft.
<b>Total Area</b>	<b>1,784 - 1,937 sq.ft.</b>



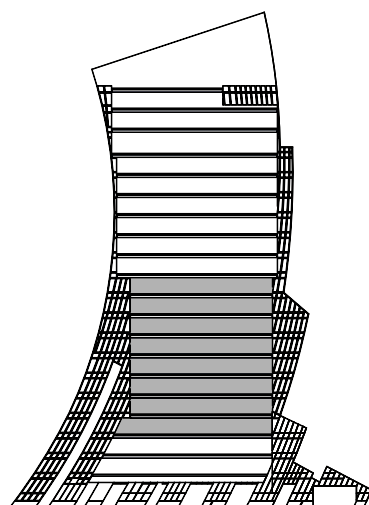
All pictures, plans, layouts, information, data and details included in this brochure are indicative only and may change at any time up to the final 'as built' status in accordance with final designs of the project, regulatory approvals and planning permissions. All accessories and interior finishes such as wallpaper, chandeliers, furniture, electronics, white goods, curtains, hard and soft landscaping, pavements, features, gym, swimming pool(s) and other elements displayed in the brochure, or within the show apartment or between the plot boundary and the unit, are not part of the unit and are shown for illustrative purposes only.





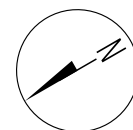
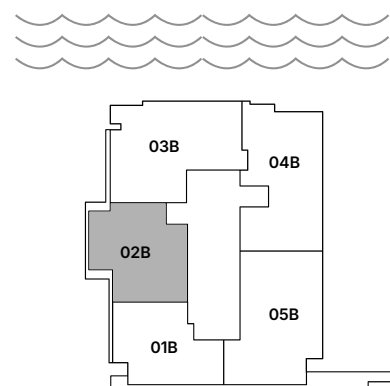
# 2 bedroomS

– 02 SERIES –



FLOORS  
3 to 10

Suite Area	1,712 - 1,715 sq.ft.
Balcony Area	210 - 435 sq.ft.
<b>Total Area</b>	<b>1,921 - 2,149 sq.ft.</b>



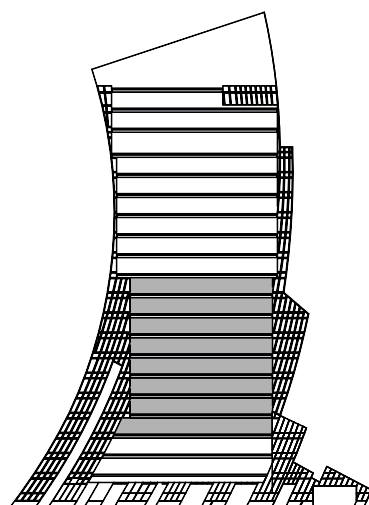
All pictures, plans, layouts, information, data and details included in this brochure are indicative only and may change at any time up to the final 'as built' status in accordance with final designs of the project, regulatory approvals and planning permissions. All accessories and interior finishes such as wall paper, chandeliers, furniture, electronics, white goods, curtains, hard and soft landscaping, pavements, features, gym, swimming pool(s) and other elements displayed in the brochure, or within the show apartment or between the plot boundary and the unit, are not part of the unit and are shown for illustrative purposes only.





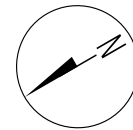
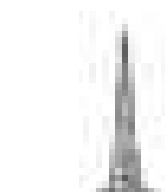
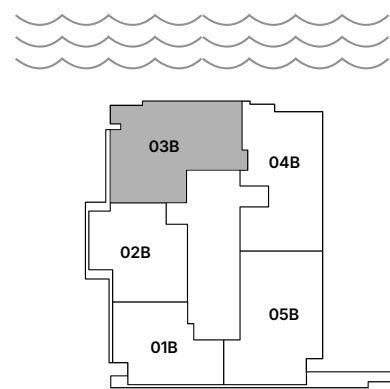
# 3 bedroomS

– 03 SERIES –



FLOORS  
3 to 10

Suite Area	2,105 - 2,187 sq.ft.
Balcony Area	473 - 732 sq.ft.
Total Area	2,658 - 2,919 sq.ft.



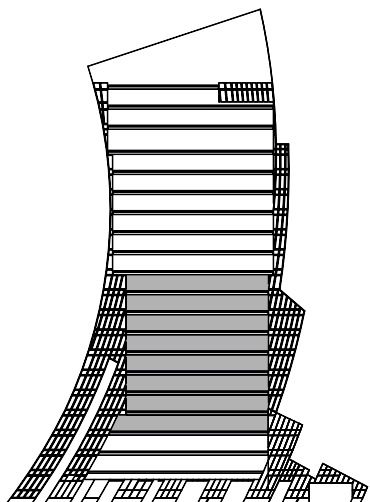
All pictures, plans, layouts, information, data and details included in this brochure are indicative only and may change at any time up to the final 'as built' status in accordance with final designs of the project, regulatory approvals and planning permissions. All accessories and interior finishes such as wallpaper, chandeliers, furniture, electronics, white goods, curtains, hard and soft landscaping, pavements, features, gym, swimming pool(s) and other elements displayed in the brochure, or within the show apartment or between the plot boundary and the unit, are not part of the unit and are shown for illustrative purposes only.





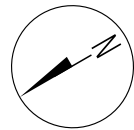
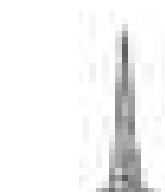
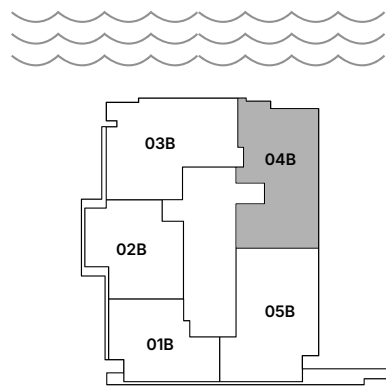
# 4bedroomS

– 04 SERIES –



FLOORS  
3 to 10

Suite Area	2,074 - 2,079 sq.ft.
Balcony Area	650 - 762 sq.ft.
<b>Total Area</b>	<b>2,729 - 2,836 sq.ft.</b>



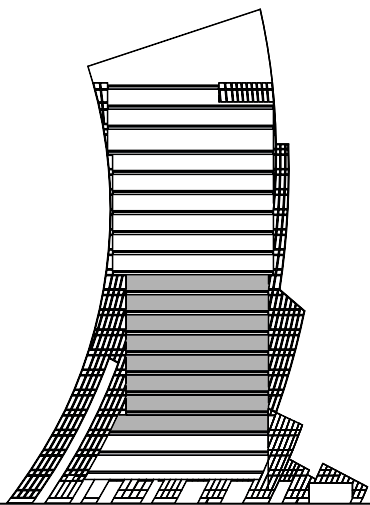
All pictures, plans, layouts, information, data and details included in this brochure are indicative only and may change at any time up to the final 'as built' status in accordance with final designs of the project, regulatory approvals and planning permissions. All accessories and interior finishes such as wallpaper, chandeliers, furniture, electronics, white goods, curtains, hard and soft landscaping, pavements, features, gym, swimming pool(s) and other elements displayed in the brochure, or within the show apartment or between the plot boundary and the unit, are not part of the unit and are shown for illustrative purposes only.





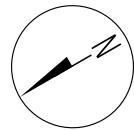
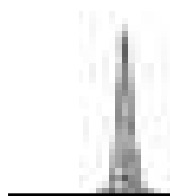
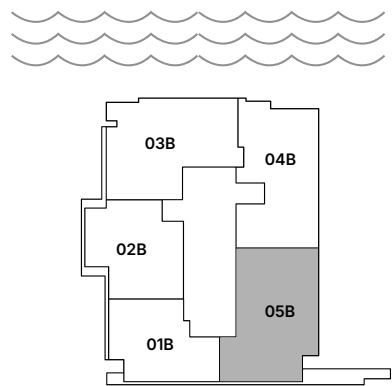
# 3 bedroomS

– 05 SERIES –



F L O O R S  
3 to 10

Suite Area	2,125 - 2,135 sq.ft.
Balcony Area	627 - 630 sq.ft.
<b>Total Area</b>	<b>2,752 - 2,765 sq.ft.</b>



All pictures, plans, layouts, information, data and details included in this brochure are indicative only and may change at any time up to the final as built status in accordance with final designs of the project, regulatory approvals and planning permissions. All accessories and interior finishes such as wallpaper, chandeliers, furniture, electronics, white goods, curtains, hard and soft landscaping, pavements, features, gym, swimming pool(s) and other elements displayed in the brochure, or within the show apartment or between the plot boundary and the unit, are not part of the unit and are shown for illustrative purposes only.



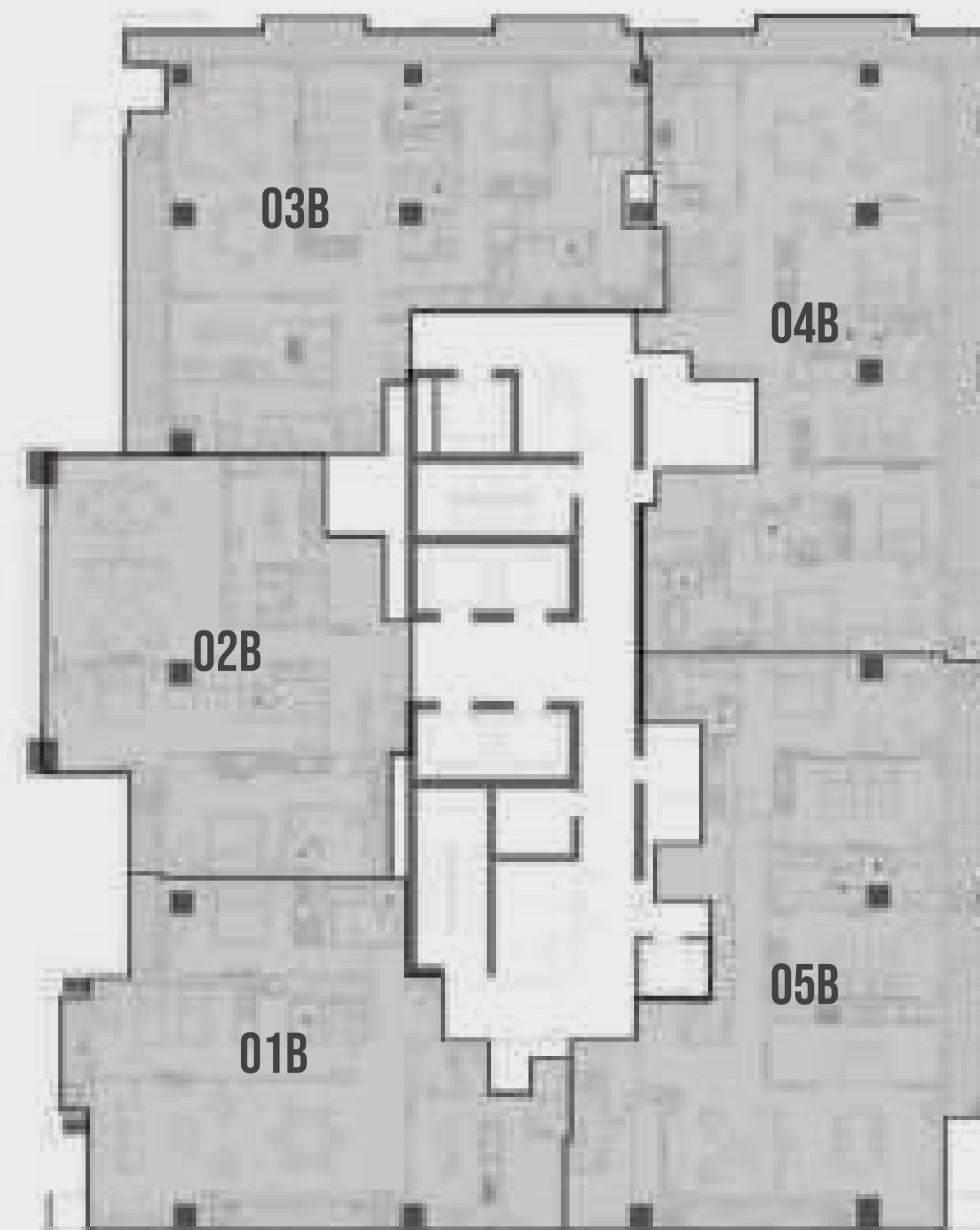
DAVINCI tower

# FLOORs11–16

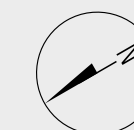
- LAYOUT PLAN -

All pictures, plans, layouts, information, data and details included in this brochure are indicative only and may change at any time up to the final 'as built' status in accordance with final designs of the project, regulatory approvals and planning permissions. All accessories and interior finishes such as wall paper, chandeliers, furniture, electronics, white goods, curtains, hard and soft landscaping, pavements, features, gym, swimming pool(s) and other elements displayed in the brochure, or within the show apartment or between the plot boundary and the unit, are not part of the unit and are shown for illustrative purposes only.

dubai canal



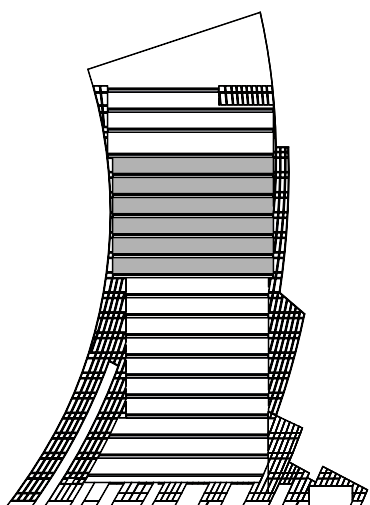
BURJ KHALIFA





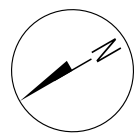
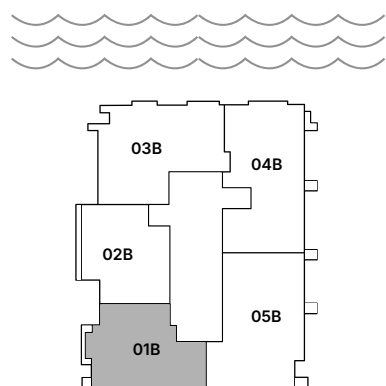
# 2 bedroomS

– 01 SERIES –



FLOORS  
11 to 16

Suite Area	1,829 - 1,852 sq.ft.
Balcony Area	171 - 257 sq.ft.
<b>Total Area</b>	<b>2,023 - 2,101 sq.ft.</b>

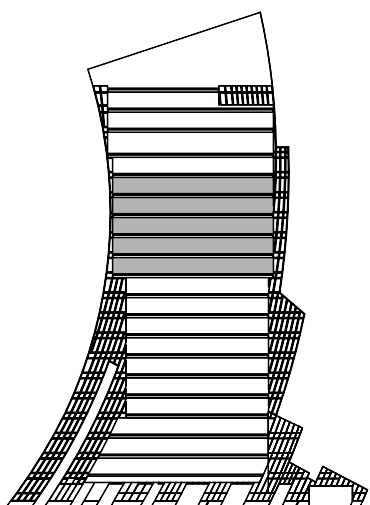


All pictures, plans, layouts, information, data and details included in this brochure are indicative only and may change at any time up to the final 'as built' status in accordance with final designs of the project, regulatory approvals and planning permissions. All accessories and interior finishes such as wallpaper, chandeliers, furniture, electronics, white goods, curtains, hard and soft landscaping, pavements, features, gym, swimming pool(s) and other elements displayed in the brochure, or within the show apartment or between the plot boundary and the unit, are not part of the unit and are shown for illustrative purposes only.



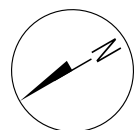
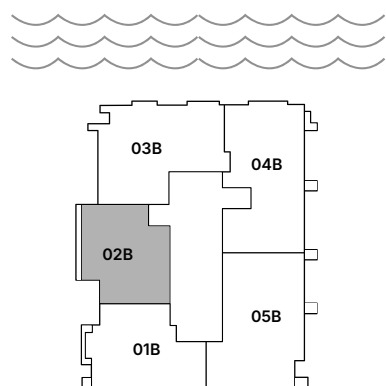
# 2 bedroomS

– 02 SERIES –



FLOORS  
11 to 15

Suite Area	1,898 sq.ft.
Balcony Area	44 - 198 sq.ft.
<b>Total Area</b>	<b>1,942 - 2,097 sq.ft.</b>

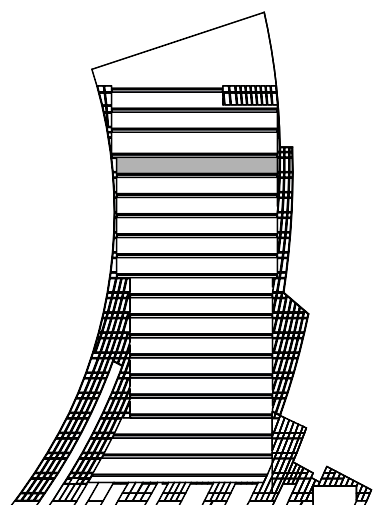


All pictures, plans, layouts, information, data and details included in this brochure are indicative only and may change at any time up to the final as built status in accordance with final designs of the project, regulatory approvals and planning permissions. All accessories and interior finishes such as wall paper, chandeliers, furniture, electronics, white goods, curtains, hard and soft landscaping, pavements, features, gym, swimming pool(s) and other elements displayed in the brochure, or within the show apartment or between the plot boundary and the unit, are not part of the unit and are shown for illustrative purposes only.



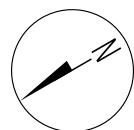
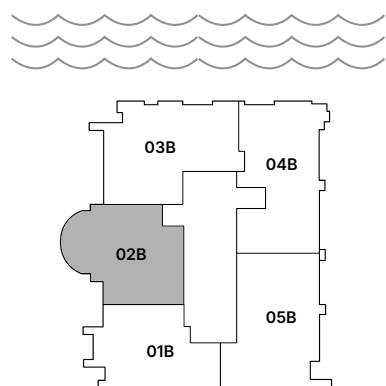
# 2 bedroomS

– 02 SERIES –



FLOOR  
16

Suite Area	2,123.83 sq.ft.
Balcony Area	96.44 sq.ft.
<b>Total Area</b>	<b>2,220.27 sq.ft.</b>

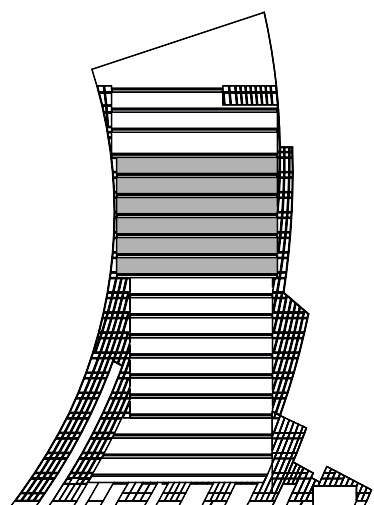


All pictures, plans, layouts, information, data and details included in this brochure are indicative only and may change at any time up to the final 'as built' status in accordance with final designs of the project, regulatory approvals and planning permissions. All accessories and interior finishes such as wallpaper, chandeliers, furniture, electronics, white goods, curtains, hard and soft landscaping, pavements, features, gym, swimming pool(s) and other elements displayed in the brochure, or within the show apartment or between the plot boundary and the unit, are not part of the unit and are shown for illustrative purposes only.



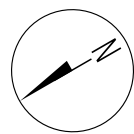
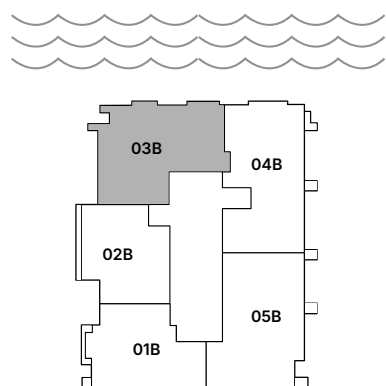
# 3 bedroomS

– 03 SERIES –



FLOORS  
11 to 16

Suite Area	2,100 - 2,209 sq.ft.
Balcony Area	464 - 656 sq.ft.
<b>Total Area</b>	<b>2,571 - 2,850 sq.ft.</b>

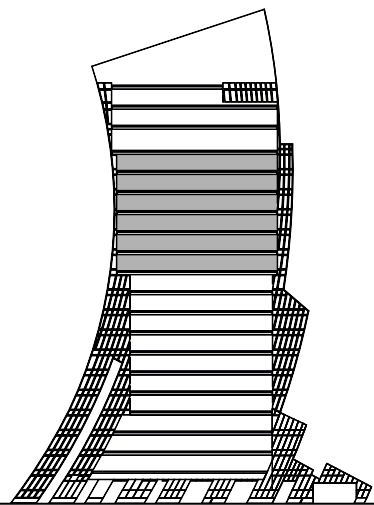


All pictures, plans, layouts, information, data and details included in this brochure are indicative only and may change at any time up to the final 'as built' status in accordance with final designs of the project, regulatory approvals and planning permissions. All accessories and interior finishes such as wallpaper, chandeliers, furniture, electronics, white goods, curtains, hard and soft landscaping, pavements, features, gym, swimming pool(s) and other elements displayed in the brochure, or within the show apartment or between the plot boundary and the unit, are not part of the unit and are shown for illustrative purposes only.



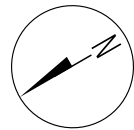
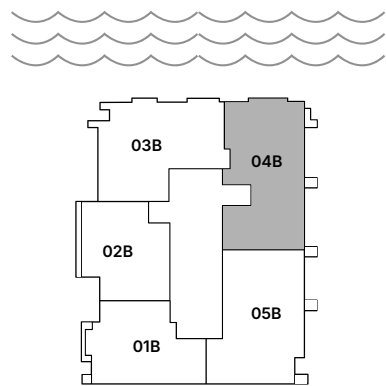
# 4bedroomS

– 04 SERIES –



FLOORS  
11 to 16

Suite Area	2,327 - 2,332 sq.ft.
Balcony Area	523 - 569 sq.ft.
<b>Total Area</b>	<b>2,819 - 2,898 sq.ft.</b>



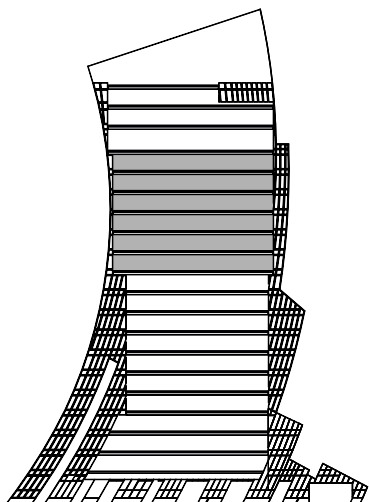
All pictures, plans, layouts, information, data and details included in this brochure are indicative only and may change at any time up to the final 'as built' status in accordance with final designs of the project, regulatory approvals and planning permissions. All accessories and interior finishes such as wallpaper, chandeliers, furniture, electronics, white goods, curtains, hard and soft landscaping, pavements, gym, swimming pool(s) and other elements displayed in the brochure, or within the show apartment or between the plot boundary and the unit, are not part of the unit and are shown for illustrative purposes only.





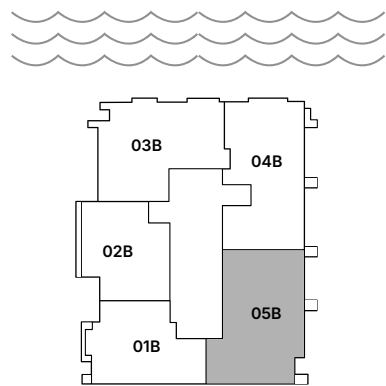
3 bedroomS

– 05 SERIES –



FLOORS  
11 to 16

Suite Area	2,401.75 - 2,412.95 sq.ft.
Balcony Area	364.36 - 364.90 sq.ft.
Total Area	<b>2,766.11 - 2,777.84 sq.ft.</b>



All pictures, plans, layouts, information, data and details included in this brochure are indicative only and may change at any time up to the final as built status in accordance with final designs of the project, regulatory approvals and planning permissions. All accessories and interior finishes such as wallpaper, chandeliers, furniture, electronics, white goods, curtains, hard and soft landscaping, pavements, features, gym, swimming pool(s) and other elements displayed in the brochure, or within the show apartment or between the plot boundary and the unit, are not part of the unit and are shown for illustrative purposes only.



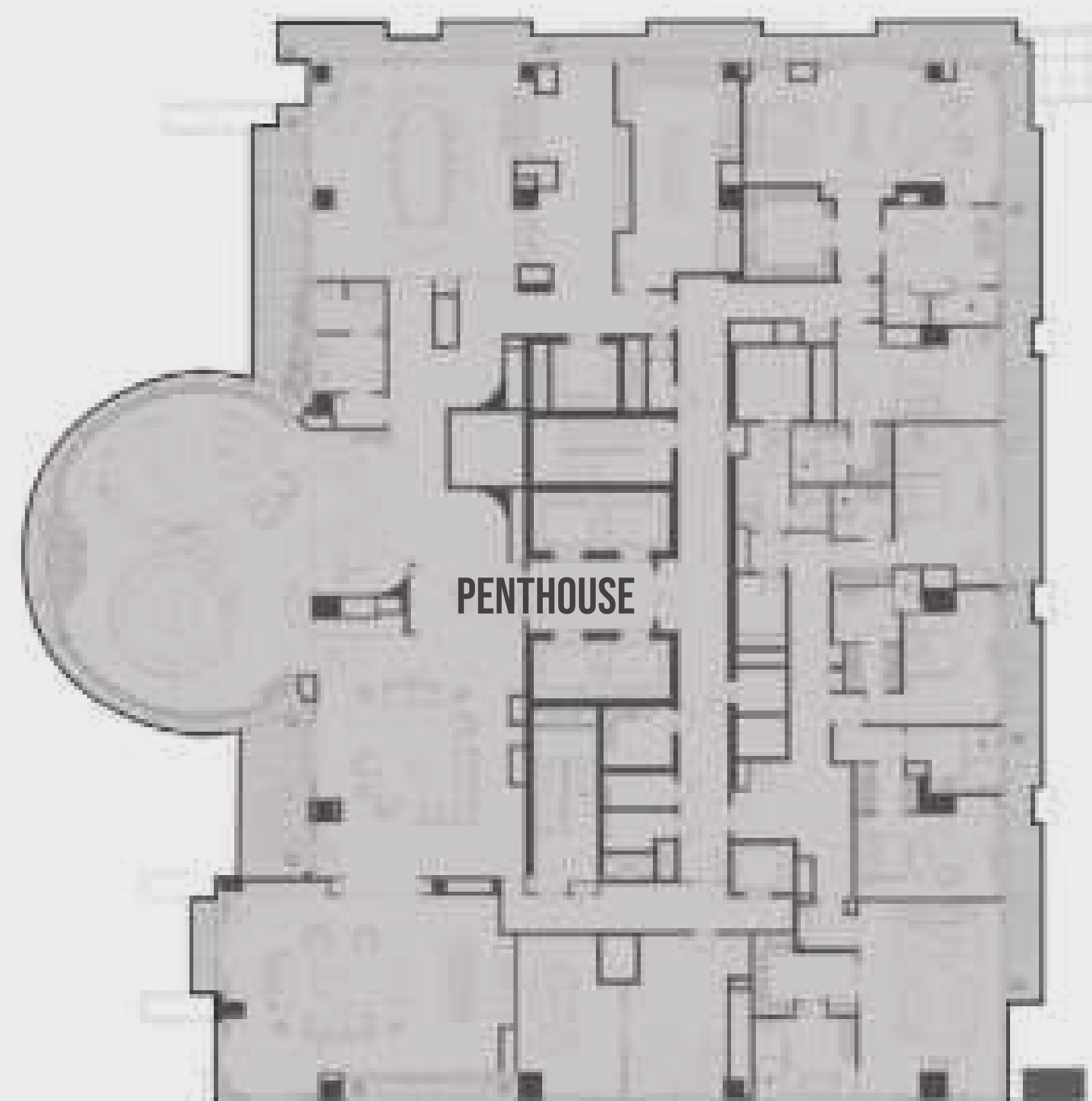
DAVINCI tower

# FLOOR 17

- LAYOUT PLAN -

All pictures, plans, layouts, information, data and details included in this brochure are indicative only and may change at any time up to the final 'as built' status in accordance with final designs of the project, regulatory approvals and planning permissions. All accessories and interior finishes such as wall paper, chandeliers, furniture, electronics, white goods, curtains, hard and soft landscaping, pavements, features, gym, swimming pool(s) and other elements displayed in the brochure, or within the show apartment or between the plot boundary and the unit, are not part of the unit and are shown for illustrative purposes only.

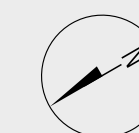
dubai canal



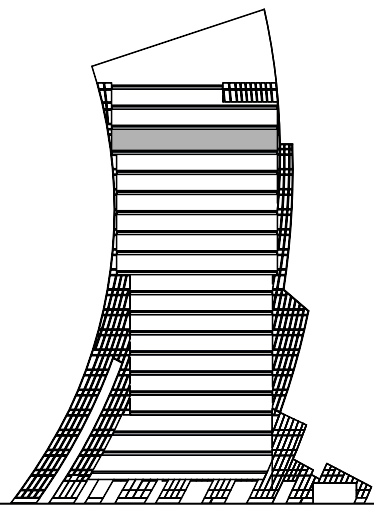
PENTHOUSE



BURJ KHALIFA

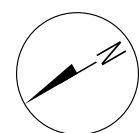
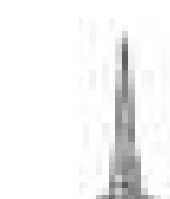
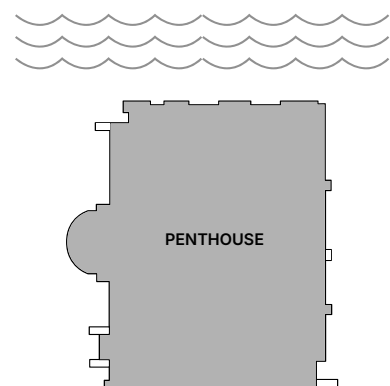


# THE PENTHOUSE



## FLOOR 17

Suite Area	14,428 sq.ft.
Balcony Area	
<b>Total Area</b>	<b>14,428 sq.ft.</b>



All pictures, plans, layouts, information, data and details included in this brochure are indicative only and may change at any time up to the final 'as built' status in accordance with final designs of the project, regulatory approvals and planning permissions. All accessories and interior finishes such as wall paper, chandeliers, furniture, electronics, white goods, curtains, hard and soft landscaping, pavements, features, gym, swimming pool(s) and other elements displayed in the brochure, or within the show apartment or between the plot boundary and the unit, are not part of the unit and are shown for illustrative purposes only.



DAVINCI tower

# FLOOR 18

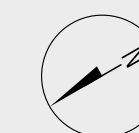
- LAYOUT PLAN -

All pictures, plans, layouts, information, data and details included in this brochure are indicative only and may change at any time up to the final 'as built' status in accordance with final designs of the project, regulatory approvals and planning permissions. All accessories and interior finishes such as wall paper, chandeliers, furniture, electronics, white goods, curtains, hard and soft landscaping, pavements, features, gym, swimming pool(s) and other elements displayed in the brochure, or within the show apartment or between the plot boundary and the unit, are not part of the unit and are shown for illustrative purposes only.

dubai canal

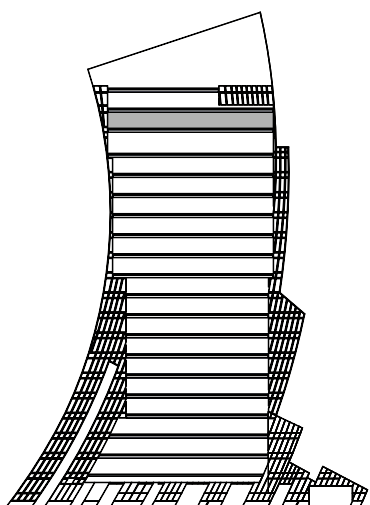


BURJ KHALIFA



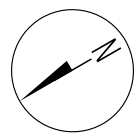
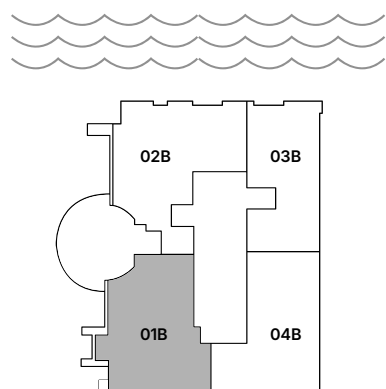
# 4 bedroomS

– 01 SERIES –



FLOOR  
18

Suite Area	2,503.15 sq.ft.
Balcony Area	359.08 sq.ft.
<b>Total Area</b>	<b>2,862.23 sq.ft.</b>



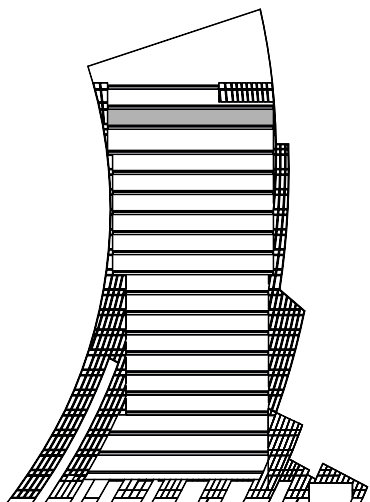
All pictures, plans, layouts, information, data and details included in this brochure are indicative only and may change at any time up to the final 'as built' status in accordance with final designs of the project, regulatory approvals and planning permissions. All accessories and interior finishes such as wallpaper, chandeliers, furniture, electronics, white goods, curtains, hard and soft landscaping, pavements, features, gym, swimming pool(s) and other elements displayed in the brochure, or within the show apartment or between the plot boundary and the unit, are not part of the unit and are shown for illustrative purposes only.





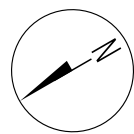
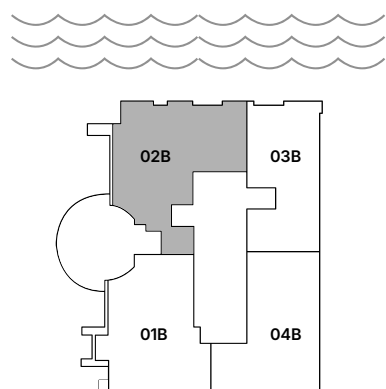
# 4 bedroomS

– 02 SERIES –



FLOOR  
18

Suite Area	2,835.54 sq.ft.
Balcony Area	491.26 sq.ft.
<b>Total Area</b>	<b>3,326.80 sq.ft.</b>

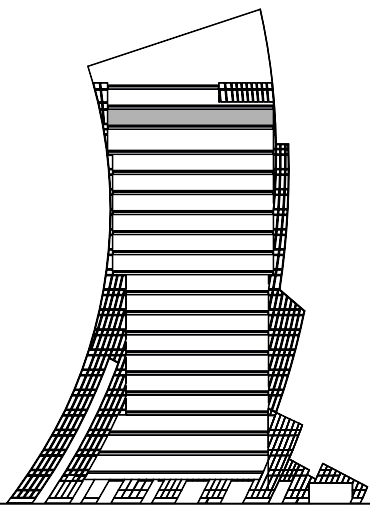


All pictures, plans, layouts, information, data and details included in this brochure are indicative only and may change at any time up to the final 'as built' status in accordance with final designs of the project, regulatory approvals and planning permissions. All accessories and interior finishes such as wallpaper, chandeliers, furniture, electronics, white goods, curtains, hard and soft landscaping, pavements, features, gym, swimming pool(s) and other elements displayed in the brochure, or within the show apartment or between the plot boundary and the unit, are not part of the unit and are shown for illustrative purposes only.



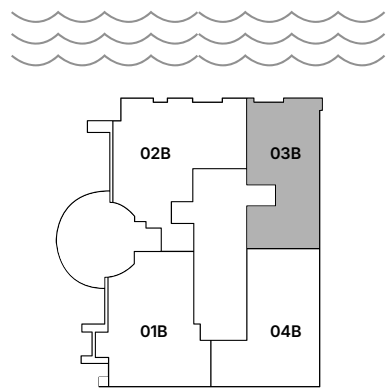
# 4 bedroomS

– 03 SERIES –



FLOOR  
18

Suite Area	2,349 sq.ft.
Balcony Area	166 sq.ft.
<b>Total Area</b>	<b>2,515 sq.ft.</b>

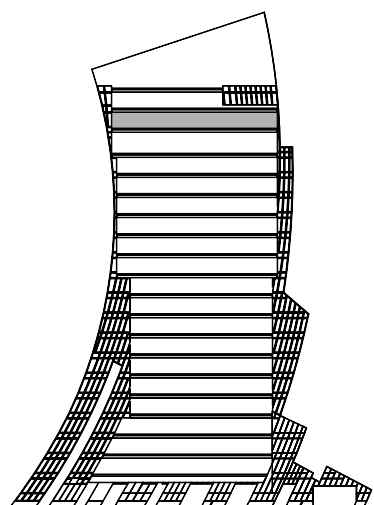


All pictures, plans, layouts, information, data and details included in this brochure are indicative only and may change at any time up to the final 'as built' status in accordance with final designs of the project, regulatory approvals and planning permissions. All accessories and interior finishes such as wall paper, chandeliers, furniture, electronics, white goods, curtains, hard and soft landscaping, pavements, features, gym, swimming pool(s) and other elements displayed in the brochure, or within the show apartment or between the plot boundary and the unit, are not part of the unit and are shown for illustrative purposes only.



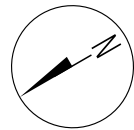
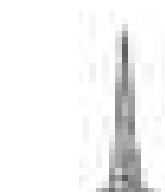
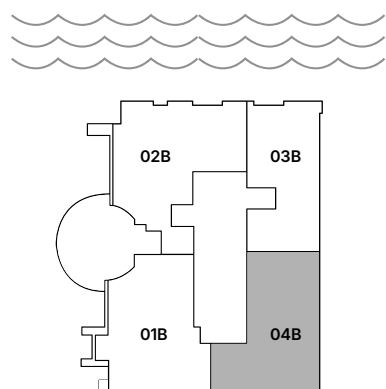
# 4 bedroomS

– 04 SERIES –



FLOOR  
18

Suite Area	2,578.49 sq.ft.
Balcony Area	89.66 sq.ft.
<b>Total Area</b>	<b>2,668.16 sq.ft.</b>



All pictures, plans, layouts, information, data and details included in this brochure are indicative only and may change at any time up to the final 'as built' status in accordance with final designs of the project, regulatory approvals and planning permissions. All accessories and interior finishes such as wall paper, chandeliers, furniture, electronics, white goods, curtains, hard and soft landscaping, pavements, features, gym, swimming pool(s) and other elements displayed in the brochure, or within the show apartment or between the plot boundary and the unit, are not part of the unit and are shown for illustrative purposes only.



DAVINCI tower

# FLOOR 20

- LAYOUT PLAN -

All pictures, plans, layouts, information, data and details included in this brochure are indicative only and may change at any time up to the final 'as built' status in accordance with final designs of the project, regulatory approvals and planning permissions. All accessories and interior finishes such as wall paper, chandeliers, furniture, electronics, white goods, curtains, hard and soft landscaping, pavements, features, gym, swimming pool(s) and other elements displayed in the brochure, or within the show apartment or between the plot boundary and the unit, are not part of the unit and are shown for illustrative purposes only.

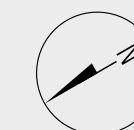
dubai canal

01B

02B

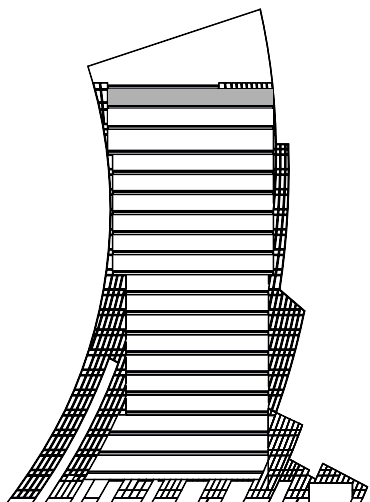


BURJ KHALIFA



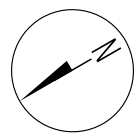
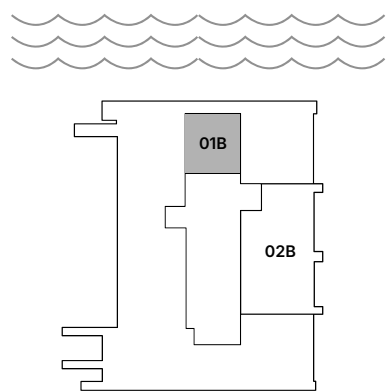
# 1 bedroom

– 01 SERIES –



FLOOR  
20

Suite Area	833.3 sq.ft.
Balcony Area	
Total Area	833.3 sq.ft.

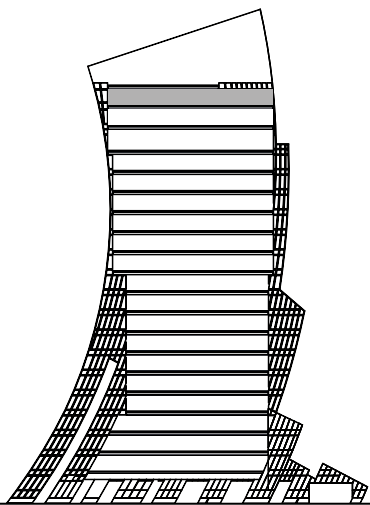


All pictures, plans, layouts, information, data and details included in this brochure are indicative only and may change at any time up to the final 'as built' status in accordance with final designs of the project, regulatory approvals and planning permissions. All accessories and interior finishes such as wallpaper, chandeliers, furniture, electronics, white goods, curtains, hard and soft landscaping, pavements, features, gym, swimming pool(s) and other elements displayed in the brochure, or within the show apartment or between the plot boundary and the unit, are not part of the unit and are shown for illustrative purposes only.



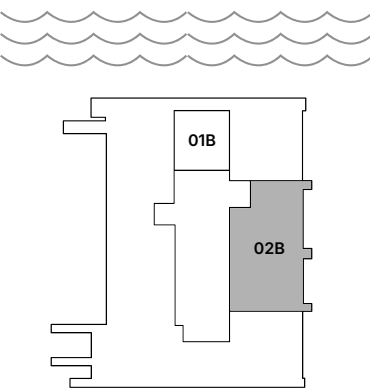
2 bedroomS

– 02 SERIES –



FLOOR  
20

Suite Area	2,289.9 sq.ft.
Balcony Area	
Total Area	2,289.9 sq.ft.



All pictures, plans, layouts, information, data and details included in this brochure are indicative only and may change at any time up to the final 'as built' status in accordance with final designs of the project, regulatory approvals and planning permissions. All accessories and interior finishes such as wallpaper, chandeliers, furniture, electronics, white goods, curtains, hard and soft landscaping, pavements, gym, swimming pool(s) and other elements displayed in the brochure, or within the show apartment or between the plot boundary and the unit, are not part of the unit and are shown for illustrative purposes only.





DAR GLOBAL PLC



DarGlobal PLC is an international real estate developer specializing in exclusive luxury developments across the world’s most coveted cosmopolitan cities .

Catering to global citizens seeking prime investments, second homes, and luxury living, DarGlobal transforms real estate into economic catalysts, unlocking opportunities for both investors and the countries it enters.

DarGlobal has partnered with over 10 world-renowned luxury brands, including Trump Organization, Aston Martin, Automobili Lamborghini, ELIE SAAB, Marriott Residences, Missoni, Mouawad, Pagani Automobili, W Hotels, and Versace. These collaborations offer unique investment opportunities in global cities, providing both wealth growth and protection.

Listed on the London Stock Exchange, DarGlobal goes beyond property development, it drives economic transformation by attracting international clients and Foreign Direct Investment (FDI). By injecting capital, confidence, and industry expertise, DarGlobal enhances local infrastructure while elevating the global appeal of each destination.

With a presence in 14 international cities across 9 countries, DarGlobal’s portfolio spans the United Kingdom, Spain, Greece, Saudi Arabia, the UAE, Oman, and Qatar. The company is also expanding into world-class hospitality, developing luxury hotels in Dubai, the Maldives, and Oman.

To support its international clientele, DarGlobal has sales and customer service offices in New York, London, Marbella, Athens, Dubai, Jeddah, Riyadh, Muscat, and Doha.





**DUBAI, UAE**

Jumeirah Emirates Towers  
30th Floor, Sheikh Zayed Road,  
PO Box 2523, Dubai, UAE  
T +971 4562 9616

**LONDON, UK**

50 Hans Crescent,  
Knightsbridge, London,  
SW1X 0NA, United Kingdom  
T +44 20 8135 4699

**MARBELLA, SPAIN**

Marbella Club Golden Mile,  
Av. Bulevar Príncipe Alfonso de  
Hohenlohe, Marbella 29602,  
Málaga, Spain  
T +34 95112 1221

**DOHA, QATAR**

Malibu Building,  
Lusail Entertainment City,  
Doha, Qatar  
T +974 44108282

**MUSCAT, OMAN**

Royal Opera House Muscat  
Shatti Al Qurum,  
Muscat, Oman  
T +968 2270 2771

**RIYADH, KSA**

2135 Tahlia St.,  
Al Olaya, 12222, Riyadh  
Kingdom of Saudi Arabia  
T +966 800 118 8081

**JEDDAH, KSA**

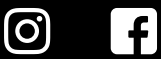
Ash Shati, 23613,  
King Abdulaziz Road, Jeddah,  
Kingdom of Saudi Arabia  
T +966 800 118 8081

**NEW YORK CITY, USA**

19th floor - Trump Tower  
New York, 725 5th Ave,  
NY 10022, USA  
T +1 212 715 1067

For more information on “DaVinci Tower”  
please call +971 4562 9616 [\(UAE\)](#)

You can visit our website at [darglobal.co.uk](http://darglobal.co.uk)  
or via our social media platforms





[darglobal.co.uk](http://darglobal.co.uk)