

# The Astera

INTERIORS BY ASTON MARTIN



Joint Development Partner



THE MOST DESIRABLE LUXURY RESIDENCES IN THE WORLD

IMMERSE YOURSELF IN  
UNWAVERING  
BEAUTY







EXPERIENCE THE  
FIERCELY INDEPENDENT  
ISLAND SPIRIT







DISCOVER  
EXCEPTIONAL  
ENGINEERING





# The Astera

INTERIORS BY ASTON MARTIN







BIRTH OF A LEGEND

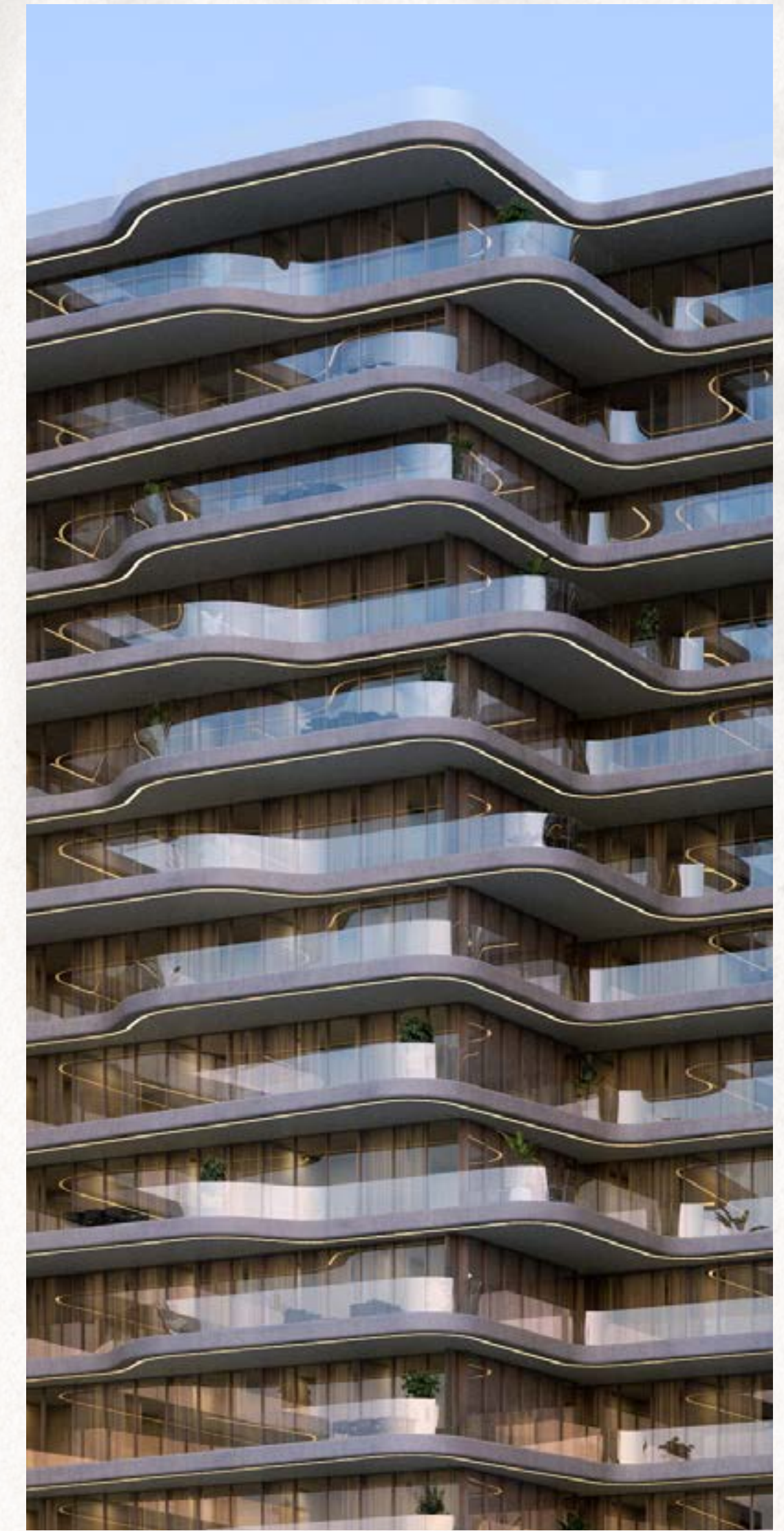
# ASTON MARTIN

The remarkable story of Aston Martin began on January 15th, 1913, when founders Robert Bamford and Lionel Martin established Bamford and Martin Limited, operating from a modest workshop on Henniker Mews in London. Their vision of crafting cars renowned for impeccable design and superior performance captured the public’s imagination, a fascination that endures even after a century.

In 1914, the name Aston Martin was adopted, a fitting choice inspired by Lionel’s success at the Aston Hill Climb in Buckinghamshire, England.

Driven by a spirit of competition from the outset, Aston Martin has evolved into an iconic brand synonymous with artisanal luxury, timeless elegance, exceptional performance, and triumphs in international motorsport since those pioneering days.









# ENGINEERING THE WORLD'S MOST DESIRABLE

DRIVEN BY BRITISH INGENUITY

Infused with the spirit of British ingenuity, The Astera, Interiors by Aston Martin, epitomizes the seamless fusion of bespoke style, cutting-edge material science, meticulous craftsmanship, and unparalleled functionality, resulting in the creation of the world's most desirable luxury residences.

In collaboration with DarGlobal, this exceptional blend of expertise and innovation has culminated in the birth of The Astera, an exclusive residential tower, where every detail reflects a commitment to excellence and sophistication.







## AUTHENTIC ISLAND LIVING

ONLY 60 MIN AWAY FROM DUBAI

Cushioned along the pristine shores of Ras Al Khaimah lies Al Marjan island, one of four exquisite man-made coral-shaped islands that extend into the azure waters of the Arabian Gulf.

The Astera adds to the allure of the island, just 60 minutes away from the vibrant city of Dubai, residents can enjoy an elevated lifestyle that seamlessly blends seclusion and convenience.



AL MARJAN ISLAND

# THE WONDERS OF COASTAL LIVING

in Ras Al Khaimah

With its lush landscapes and diverse marine life, Al Marjan Island provides a picturesque setting and unparalleled experiences that cater to every desire. You can bask on pristine beaches, enjoy world-class resorts, luxury hotels, retail outlets, and a wide range of recreational activities.

With its breathtaking sunsets, vibrant nightlife, and exceptional amenities, living in The Astera, on Al Marjan Island, not only embodies, but elevates, the wonders of coastal living.





# AL MARJAN ISLAND, UAE



45 min  
DUBAI INTERNATIONAL AIRPORT



60 min  
DUBAI MALL



60 min  
DUBAI INTERNATIONAL FINANCIAL CENTRE



The Astera  
INTERIORS BY ASTON MARTIN





# PERFECTLY LOCATED

00 min  
Your Direct Beach Access

03 min  
Al Marjan Island Resort & Spa

04 min  
Al Marjan Island Beach Club

05 min  
Al Marjan Island Amphitheater  
(Event Venue)

05 min  
Wynn Resort

06 min  
DoubleTree by Hilton Resort & Spa  
Marjan Island

06 min  
Al Marjan Island Boulevard  
(Shopping and Dining Area)

06 min  
Al Marjan Island Promenade  
(Scenic Walkway)

07 min  
Marjan Beach

27 min  
The Ritz-Carlton Ras Al Khaimah,  
Al Hamra Beach







PANORAMIC VIEWS

## OF THE ARABIAN GULF & DIRECT BEACH ACCESS

The Astera is situated in a location that epitomizes the spirit of excitement and elegance, mirroring the brand's renowned prestige. Nestled within one of the prime waterfront locations in Al Marjan Island, the residential tower offers sweeping vistas of the Arabian Gulf, the city's iconic skyline, and the bustling island.

Residents will enjoy direct beach access within the vibrant and rapidly expanding greater downtown area of Ras Al Khaimah. This includes the bustling neighborhoods of the island, the luxury resorts, and attractions, each brimming with an array of amenities to explore and indulge in.



MASTERFULLY DESIGNED

## BY THE LEGENDARY ASTON MARTIN

Crafted to harmonize with the surrounding landscape of Al Marjan Island, each residence is designed to emulate the dynamic flow of a power wave, ensuring breathtaking views from every angle.

Aston Martin, a brand synonymous with luxury, innovation, and cutting-edge design, brings its expertise to the interiors of these residential tower. The brand's signature style, featuring elegant lines, premium materials, and a sophisticated aesthetic is reflected in every detail.







INTERIORS

## PASSIONATELY DESIGNED

Inspired by the sleek lines and dynamic forms of the Aston Martin product, the interiors of the residences are a testament to over 110 years of British ingenuity, craftsmanship, and material science.

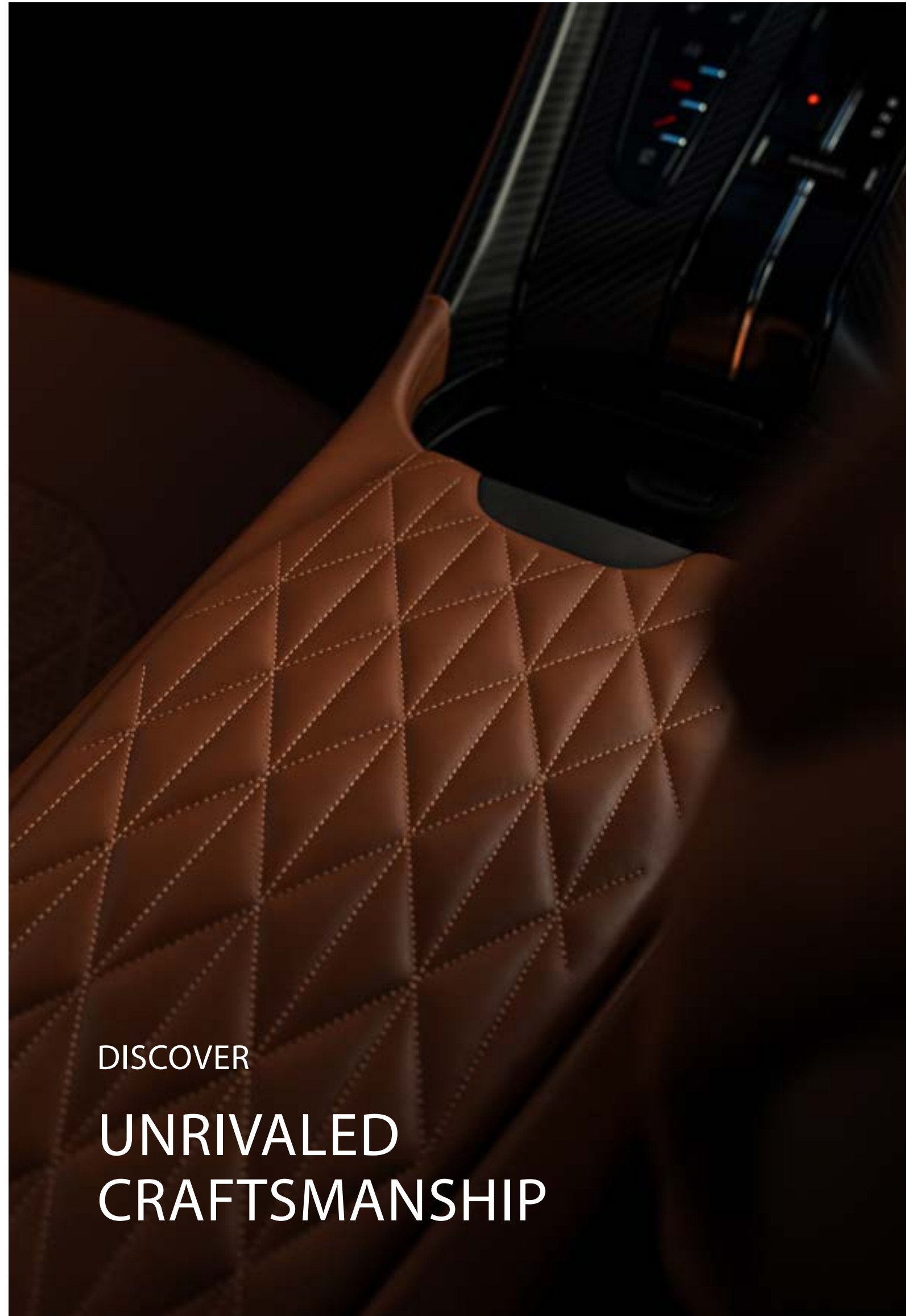
A plethora of rich materials such as fine leather, polished metals, and exotic woods are seamlessly integrated into the spaces, exuding performance and bespoke style.





Disclaimer: Illustrative concept visuals, subject to final interior designs









DETAILS

## METICULOUSLY CRAFTED

Each meticulous detail elevates the living experience, ensuring optimal performance and comfort.

With a commitment to excellence, The Astera, Interiors by Aston Martin, offers a bespoke lifestyle experience that embodies the essence of luxury living.





Disclaimer: Illustrative concept visuals, subject to final interior designs



CREATURE COMFORTS

# FOR THE DISCERNING FEW



At the podium of the tower, residents are treated to a range of world-class amenities, including direct beach access. From an infinity pool offering breathtaking views of the ocean to a scenic walk track and lush green spaces, every corner invites relaxation and rejuvenation.



Indoor cinema



Fitness centre



Multipurpose hall



Kids play area



Yoga lawn



Spa



Infinity pool



Pool bar



Direct beach access



WORLD-CLASS  
AMENITIES DECK

- 1

Indoor Cinema
- 2

Fitness Centre
- 3

Multipurpose Hall
- 4

Kids Play Area
- 5

Yoga Lawn
- 6

Spa
- 7

Infinity Pool
- 8

Pool bar







EVERY SENSE  
EMPOWERED







# The Astera

INTERIORS BY ASTON MARTIN



## 12 REASONS TO INVEST IN THE ASTERA

### 1. 10-YEAR GOLDEN VISA

Available with an investment of 2 million AED

### 2. ATTRACTIVE TAXATION

0% income tax and 0% property tax

### 3. DIRECT VIEW OF WYNN RESORT

Just 5 minutes away from the first Wynn Resort in the Middle East.

### 4. DIRECT BEACHFRONT ACCESS

Enjoy stunning Beachfront Residences

### 5. CONVENIENT LOCATION

Only 45 minutes from Dubai International Airport

### 6. 100% BUSINESS OWNERSHIP

Full ownership of businesses

### 7. HIGH-YIELD OPPORTUNITIES

Potential to generate yields beyond 9% due to saturation in Dubai beachfront locations

### 8. EMERGING MARKET

RAK is experiencing significant growth with an average apartment capital value increase of 35% in the last year

### 9. HIGH HOTEL OCCUPANCY RATES

Projected peak in occupancy rate for the hospitality sector by 2027, nearing full capacity, indicates high demand for residential products

### 10. TOURIST INFLUX

Projected to attract 3-3.5 million tourists by 2030, driving rental yields and capital values

### 11. STRONG REGULATORY FRAMEWORK

Ensures buyer protection and project completion through RERA and escrow accounts

### 12. BRANDED RESIDENCES

Achieve higher returns with price premiums of 30% to 200% due to perceived quality, prestige, and superior services, attracting high-net-worth buyers



## FLOOR PLANS



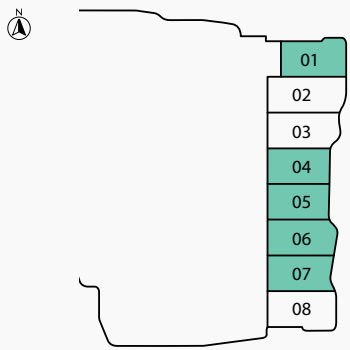
3 BEDROOMS  
VILLA TYPE A

The Astera  
INTERIORS BY ASTON MARTIN

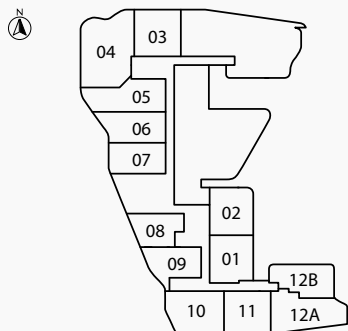


SEA & ISLAND VIEW

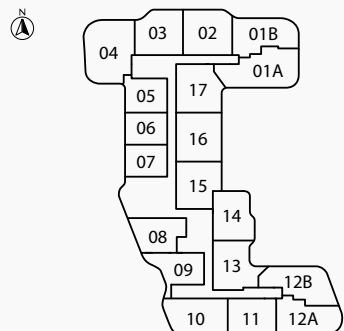
FLOOR  
GROUND



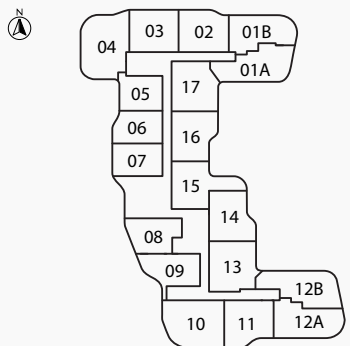
FLOOR  
2



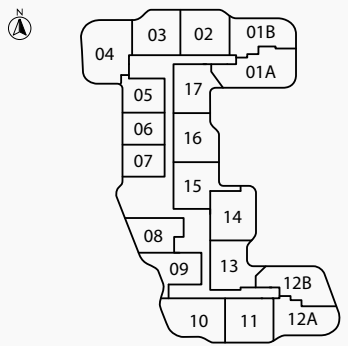
FLOOR  
3



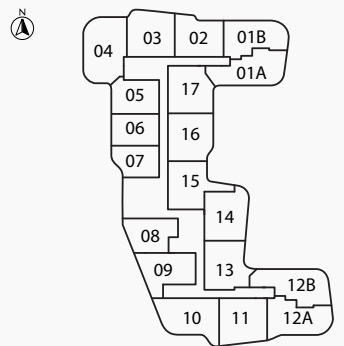
FLOORS  
4, 8, 11, 13, 16



FLOORS  
5, 7, 10, 12, 14



FLOORS  
6, 9, 15



BEACH FRONT & PARTIAL WYNN RESORT VIEW

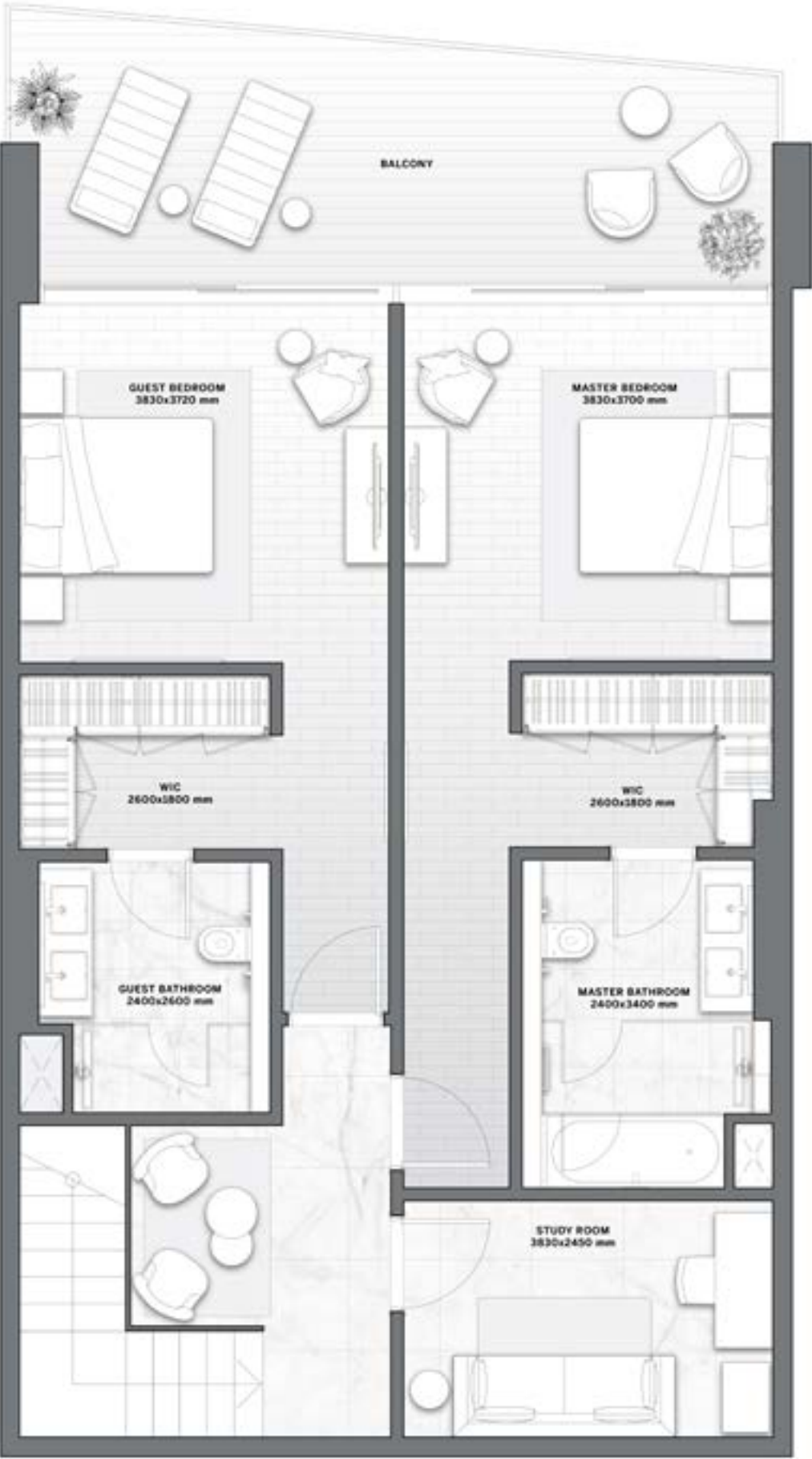
BEACH FRONT VIEW

RESIDENCE	SQM	SQFT
Internal Area	195	2,098
Balcony Area	33 - 44	360 - 476
Total Built up Area	228 - 239	2,456 - 2,573

Disclaimer: All pictures, plans, layouts, information, data and details included in this brochure are indicative only and may change at any time up to the final 'as built' status in accordance with final designs of the project, regulatory approvals and planning permissions. All accessories and interior finishes such as wallpaper, chandeliers, furniture, electronics, white goods, curtains, hard and soft landscaping, pavements, features, gym, and other elements displayed in the brochure, or between the plot boundary, are not part of the unit and are shown for illustrative purposes only.



LOWER LEVEL



UPPER LEVEL

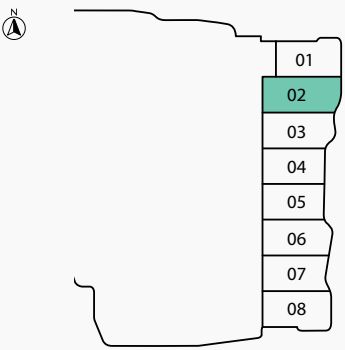


# 3 BEDROOMS

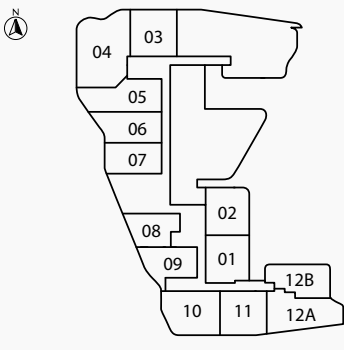
## VILLA TYPE B

SEA & ISLAND VIEW

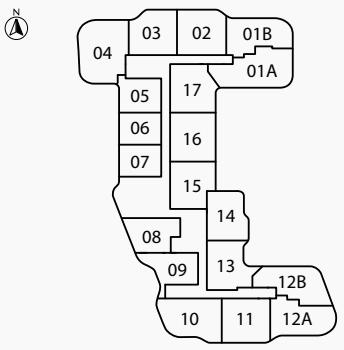
FLOOR  
GROUND



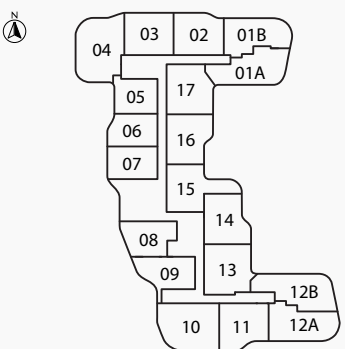
FLOOR  
2



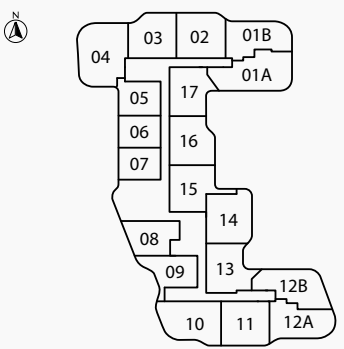
FLOOR  
3



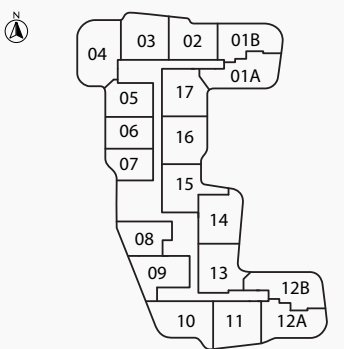
FLOORS  
4, 8, 11, 13, 16



FLOORS  
5, 7, 10, 12, 14



FLOORS  
6, 9, 15



BEACH FRONT VIEW

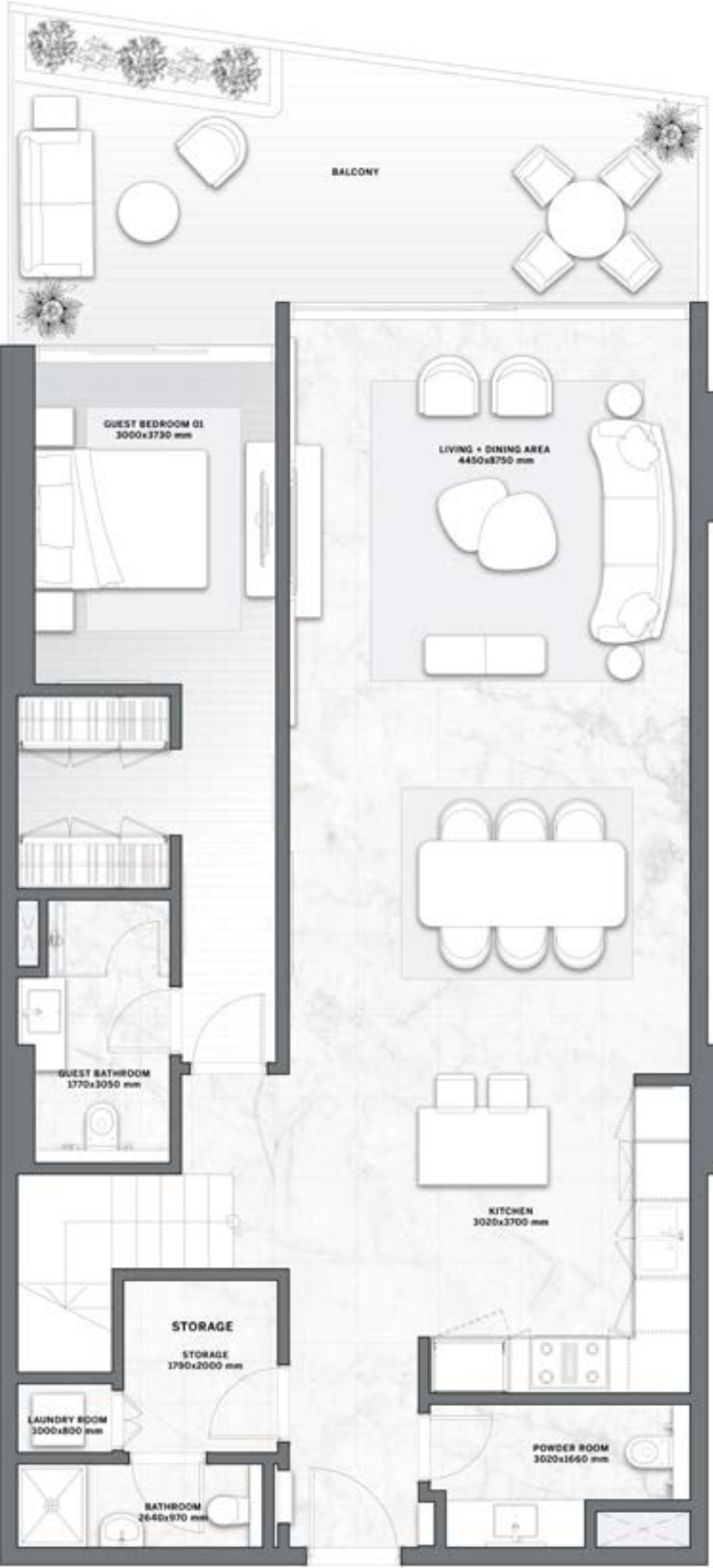
BEACH FRONT & PARTIAL WYNN RESORT VIEW

RESIDENCE	SQM	SQFT
Internal Area	226	2,431
Balcony Area	41	445
Total Built up Area	267	2,876

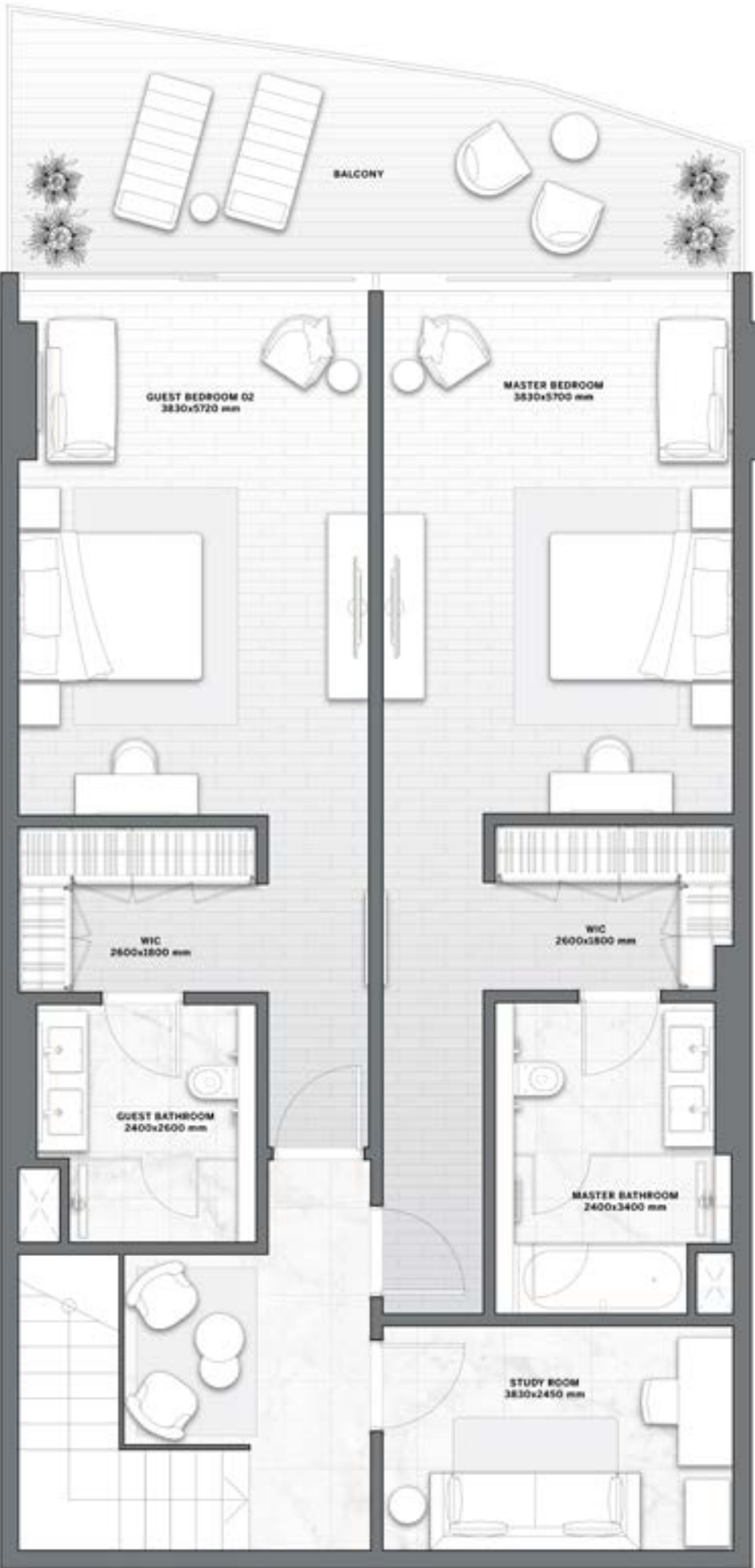
Disclaimer: All pictures, plans, layouts, information, data and details included in this brochure are indicative only and may change at any time up to the final 'as built' status in accordance with final designs of the project, regulatory approvals and planning permissions. All accessories and interior finishes such as wallpaper, chandeliers, furniture, electronics, white goods, curtains, hard and soft landscaping, pavements, features, gym, and other elements displayed in the brochure, or between the plot boundary, are not part of the unit and are shown for illustrative purposes only.

# The Astera

## INTERIORS BY ASTON MARTIN



LOWER LEVEL



UPPER LEVEL



3 BEDROOMS  
VILLA TYPE C

SEA & ISLAND VIEW



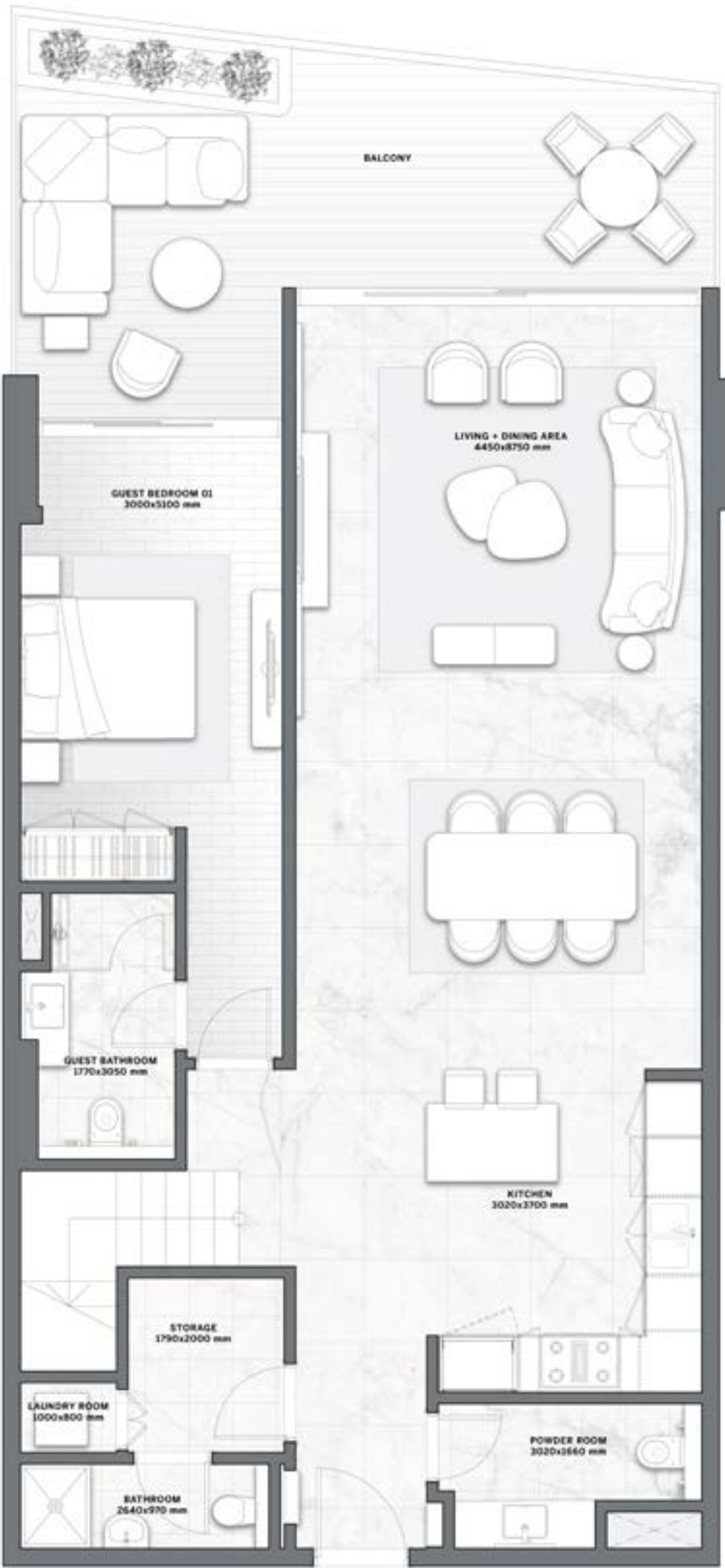
BEACH FRONT & PARTIAL WYNN RESORT VIEW

BEACH FRONT VIEW

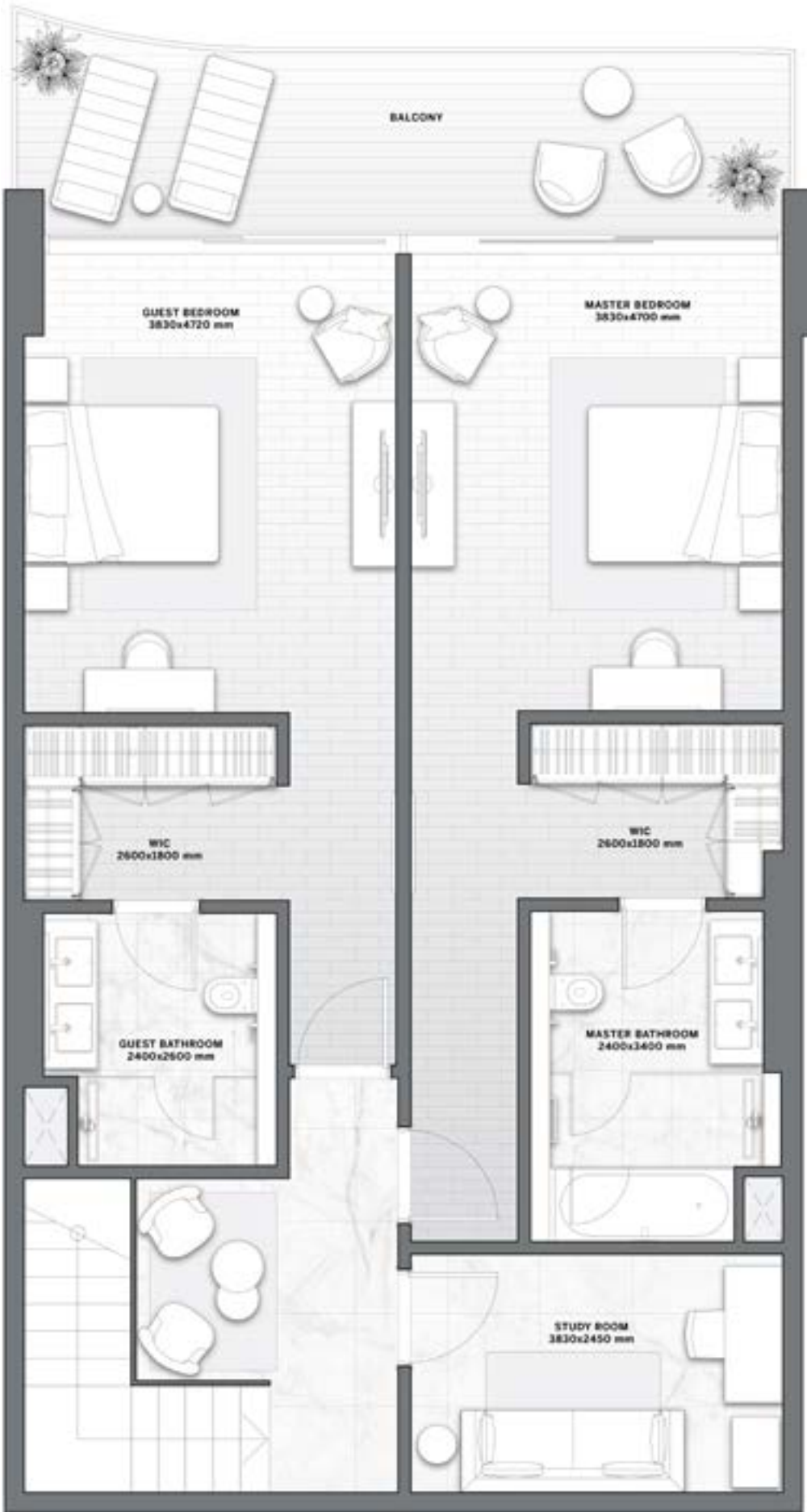
RESIDENCE	SQM	SQFT
Internal Area	211	2,269
Balcony Area	41	440
Total Built up Area	252	2,709

Disclaimer: All pictures, plans, layouts, information, data and details included in this brochure are indicative only and may change at any time up to the final 'as built' status in accordance with final designs of the project, regulatory approvals and planning permissions. All accessories and interior finishes such as wallpaper, chandeliers, furniture, electronics, white goods, curtains, hard and soft landscaping, pavements, features, gym, and other elements displayed in the brochure, or between the plot boundary, are not part of the unit and are shown for illustrative purposes only.

The Astera  
INTERIORS BY ASTON MARTIN



LOWER LEVEL



UPPER LEVEL



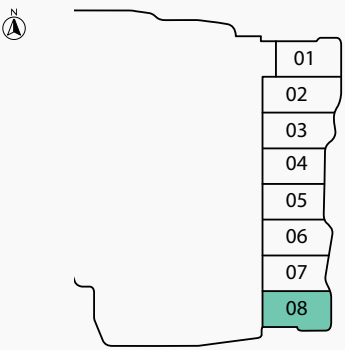
3 BEDROOMS  
VILLA TYPE D

The Astera  
INTERIORS BY ASTON MARTIN

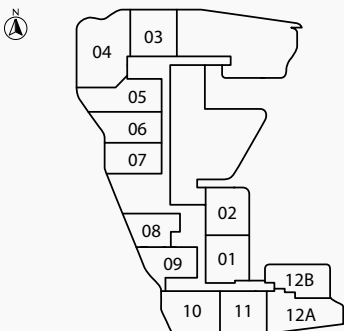


SEA & ISLAND VIEW

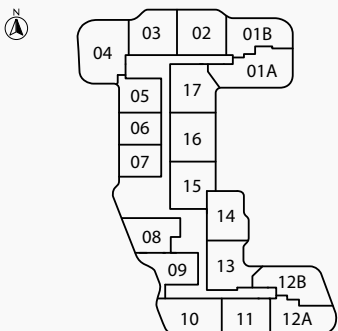
FLOOR  
GROUND



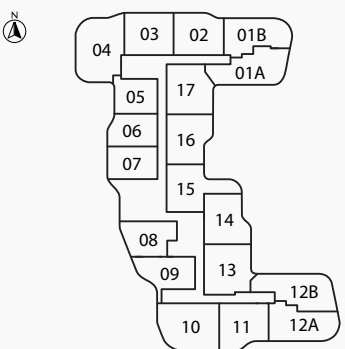
FLOOR  
2



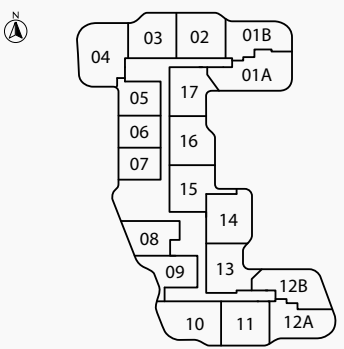
FLOOR  
3



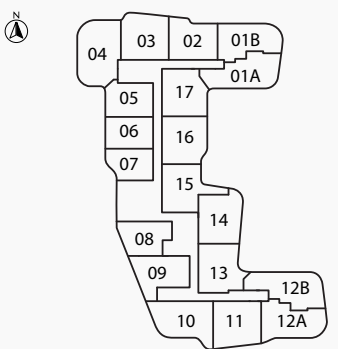
FLOORS  
4, 8, 11, 13, 16



FLOORS  
5, 7, 10, 12, 14



FLOORS  
6, 9, 15



BEACH FRONT VIEW

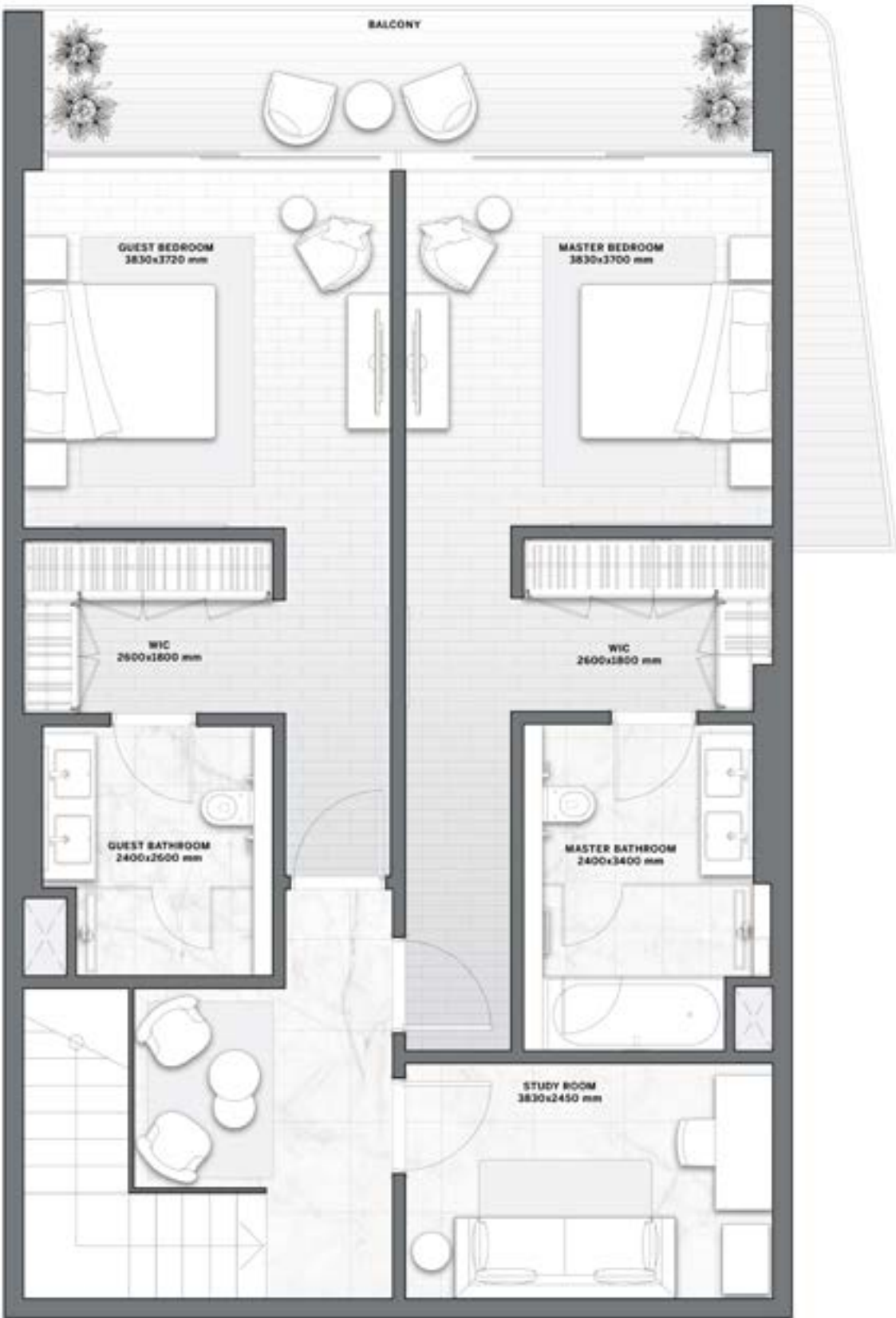
BEACH FRONT & PARTIAL WYNN RESORT VIEW

RESIDENCE	SQM	SQFT
Internal Area	194	2,090
Balcony Area	34	364
Total Built up Area	228	2,455

Disclaimer: All pictures, plans, layouts, information, data and details included in this brochure are indicative only and may change at any time up to the final 'as built' status in accordance with final designs of the project, regulatory approvals and planning permissions. All accessories and interior finishes such as wallpaper, chandeliers, furniture, electronics, white goods, curtains, hard and soft landscaping, pavements, features, gym, and other elements displayed in the brochure, or between the plot boundary, are not part of the unit and are shown for illustrative purposes only.



LOWER LEVEL

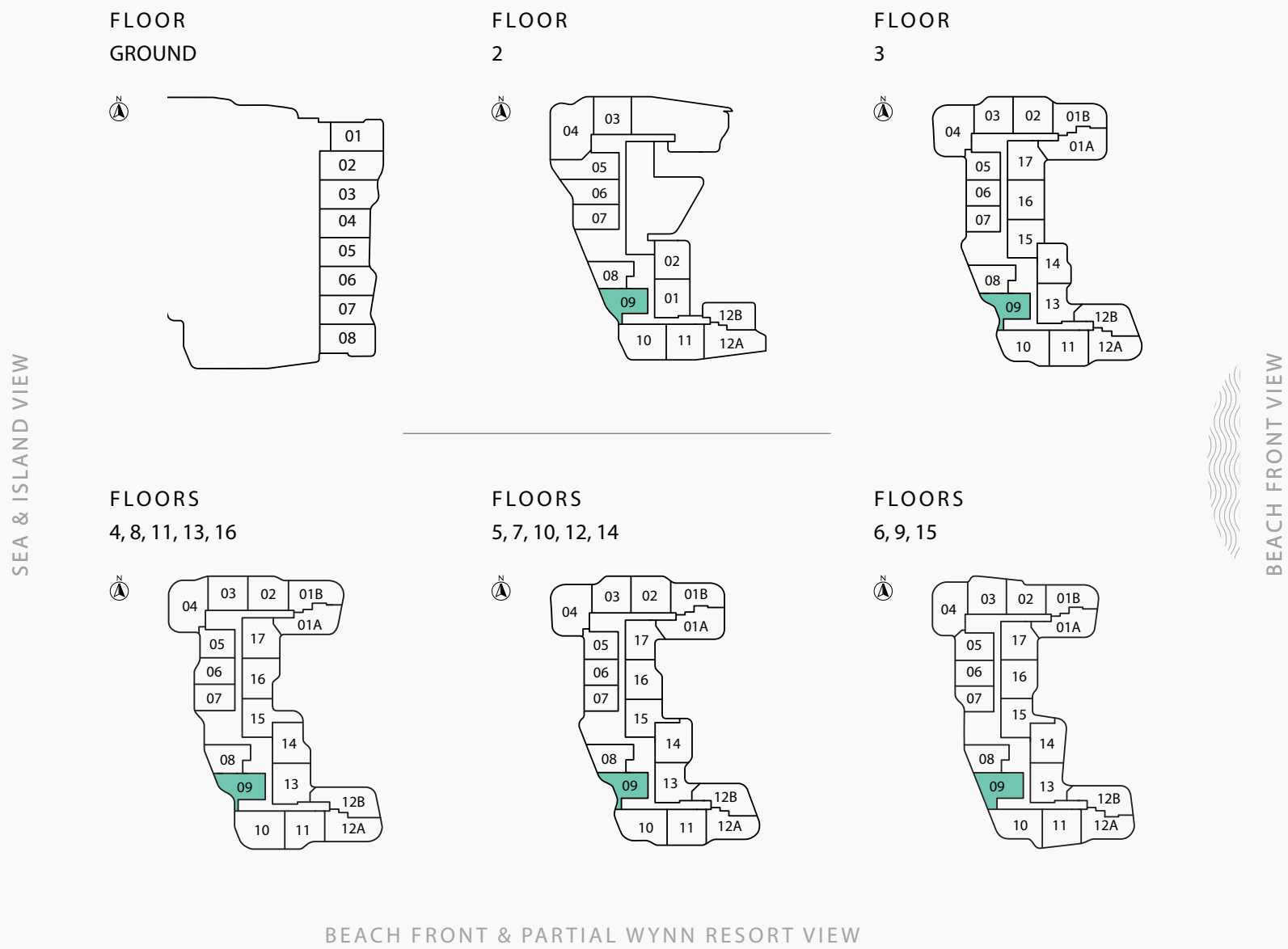


UPPER LEVEL



1 BEDROOM  
TYPE A

The Astera  
INTERIORS BY ASTON MARTIN



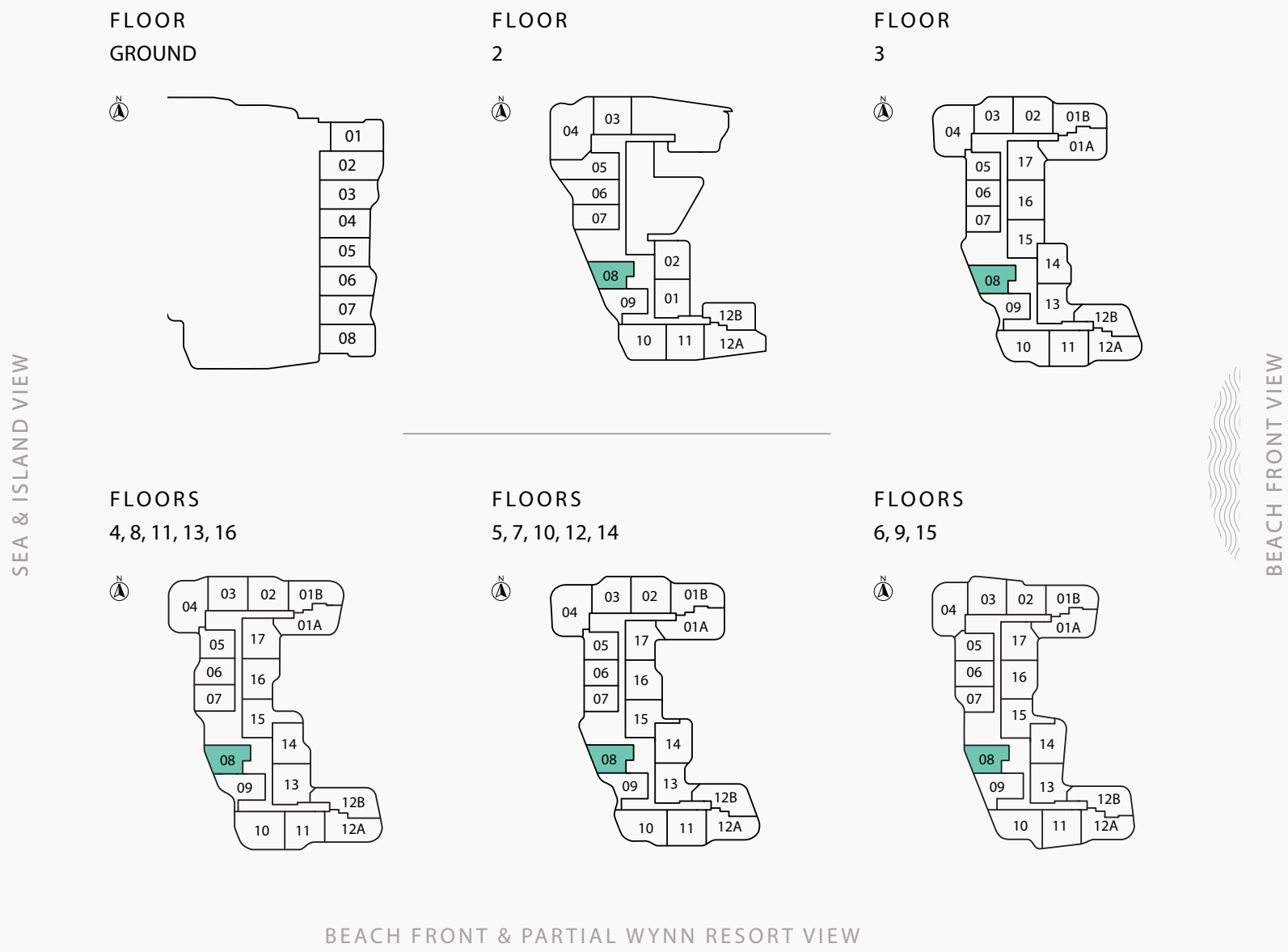
RESIDENCE	SQM	SQFT
Internal Area	48	522
Balcony Area	34 - 52	372 - 564
Total Built up Area	83 - 101	894 - 1,087

Disclaimer: All pictures, plans, layouts, information, data and details included in this brochure are indicative only and may change at any time up to the final 'as built' status in accordance with final designs of the project, regulatory approvals and planning permissions. All accessories and interior finishes such as wallpaper, chandeliers, furniture, electronics, white goods, curtains, hard and soft landscaping, pavements, features, gym, and other elements displayed in the brochure, or between the plot boundary, are not part of the unit and are shown for illustrative purposes only.



1 BEDROOM  
TYPE B

The Astera  
INTERIORS BY ASTON MARTIN



RESIDENCE	SQM	SQFT
Internal Area	58	623
Balcony Area	19 - 20	209 - 214
Total Built up Area	77 - 78	832 - 837

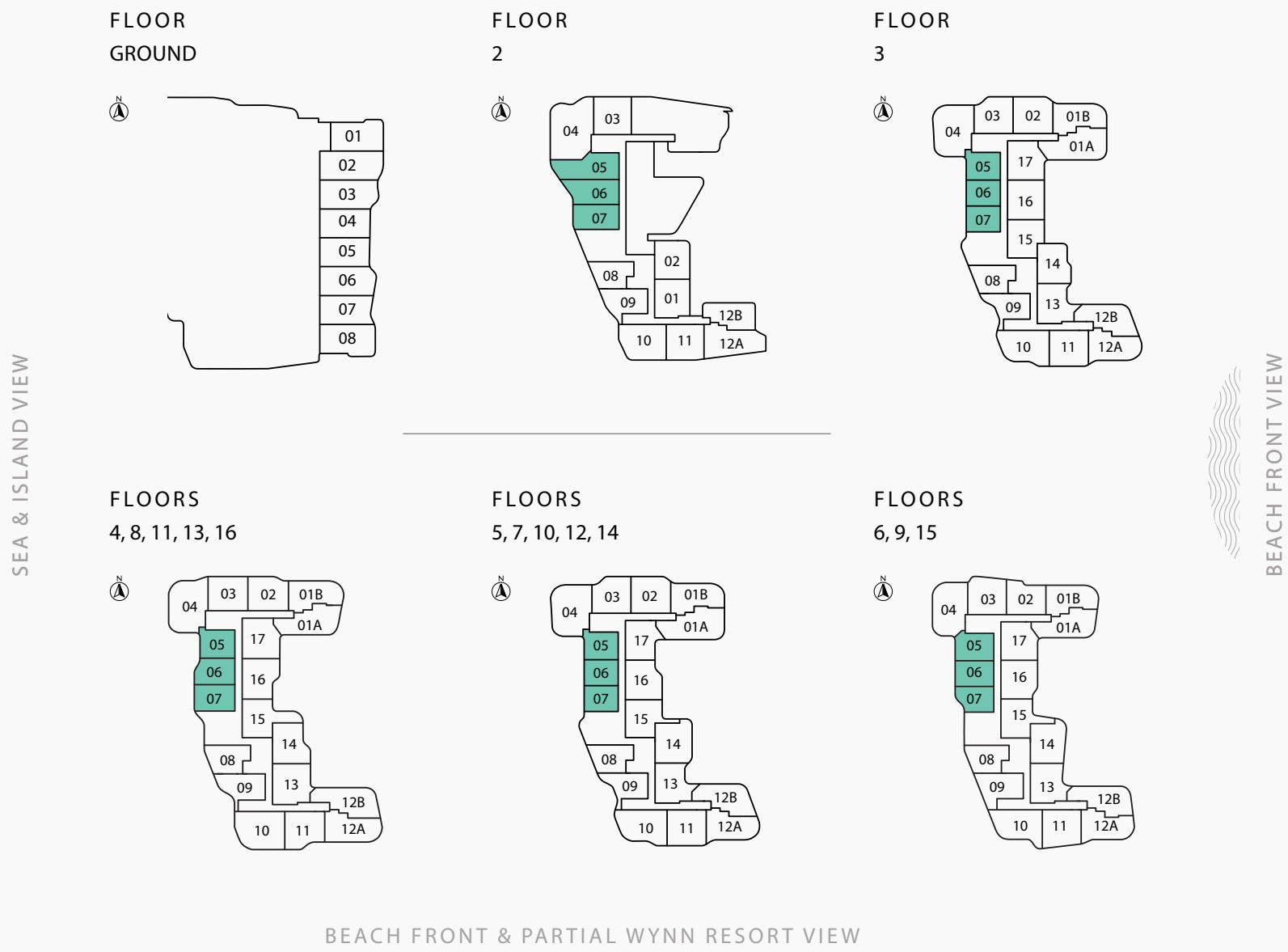
Disclaimer: All pictures, plans, layouts, information, data and details included in this brochure are indicative only and may change at any time up to the final 'as built' status in accordance with final designs of the project, regulatory approvals and planning permissions. All accessories and interior finishes such as wallpaper, chandeliers, furniture, electronics, white goods, curtains, hard and soft landscaping, pavements, features, gym, and other elements displayed in the brochure, or between the plot boundary, are not part of the unit and are shown for illustrative purposes only.





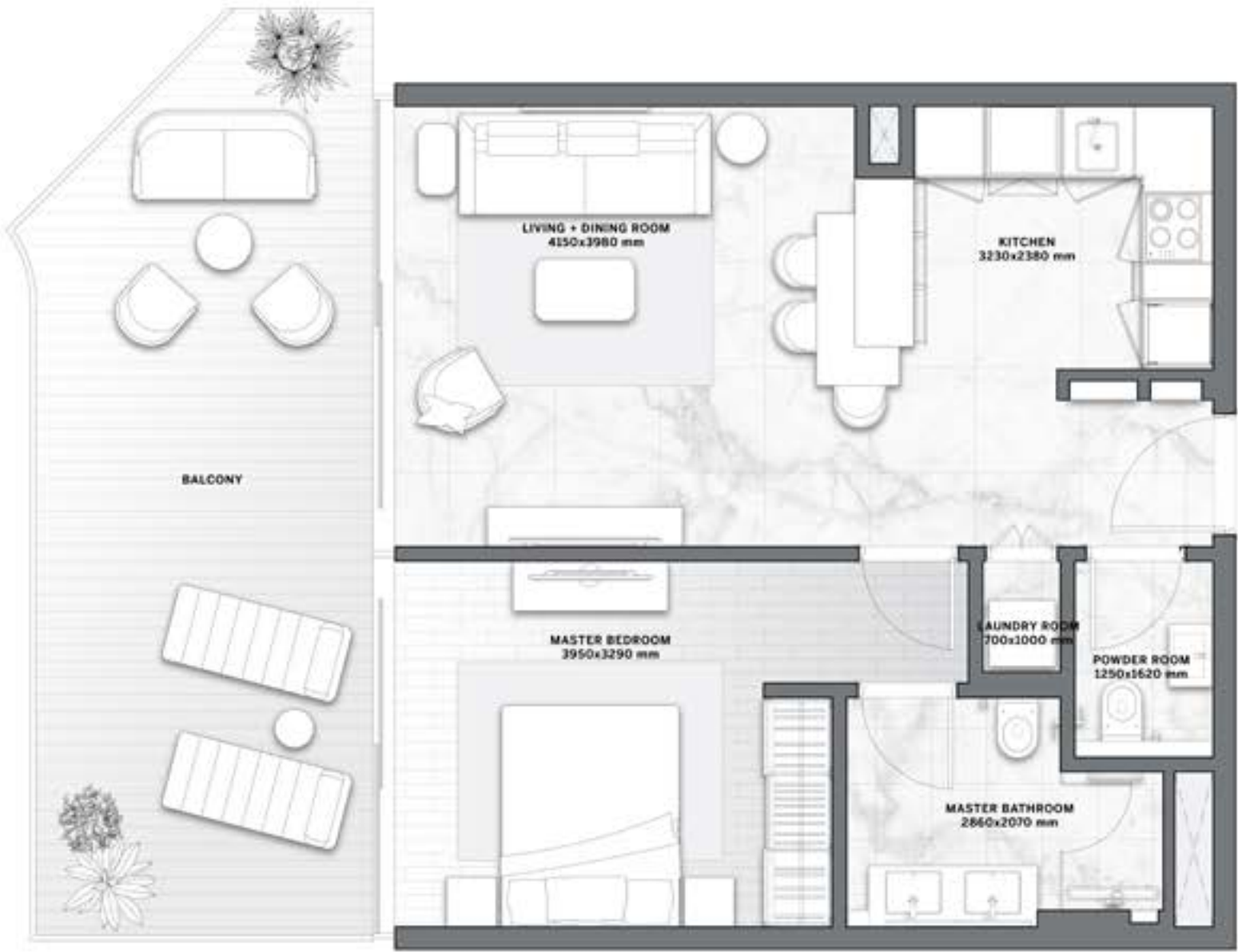
1 BEDROOM  
TYPE C

The Astera  
INTERIORS BY ASTON MARTIN



RESIDENCE	SQM	SQFT
Internal Area	52 - 55	562 - 595
Balcony Area	11 - 65	119 - 702
Total Built up Area	63 - 120	682 - 1,297

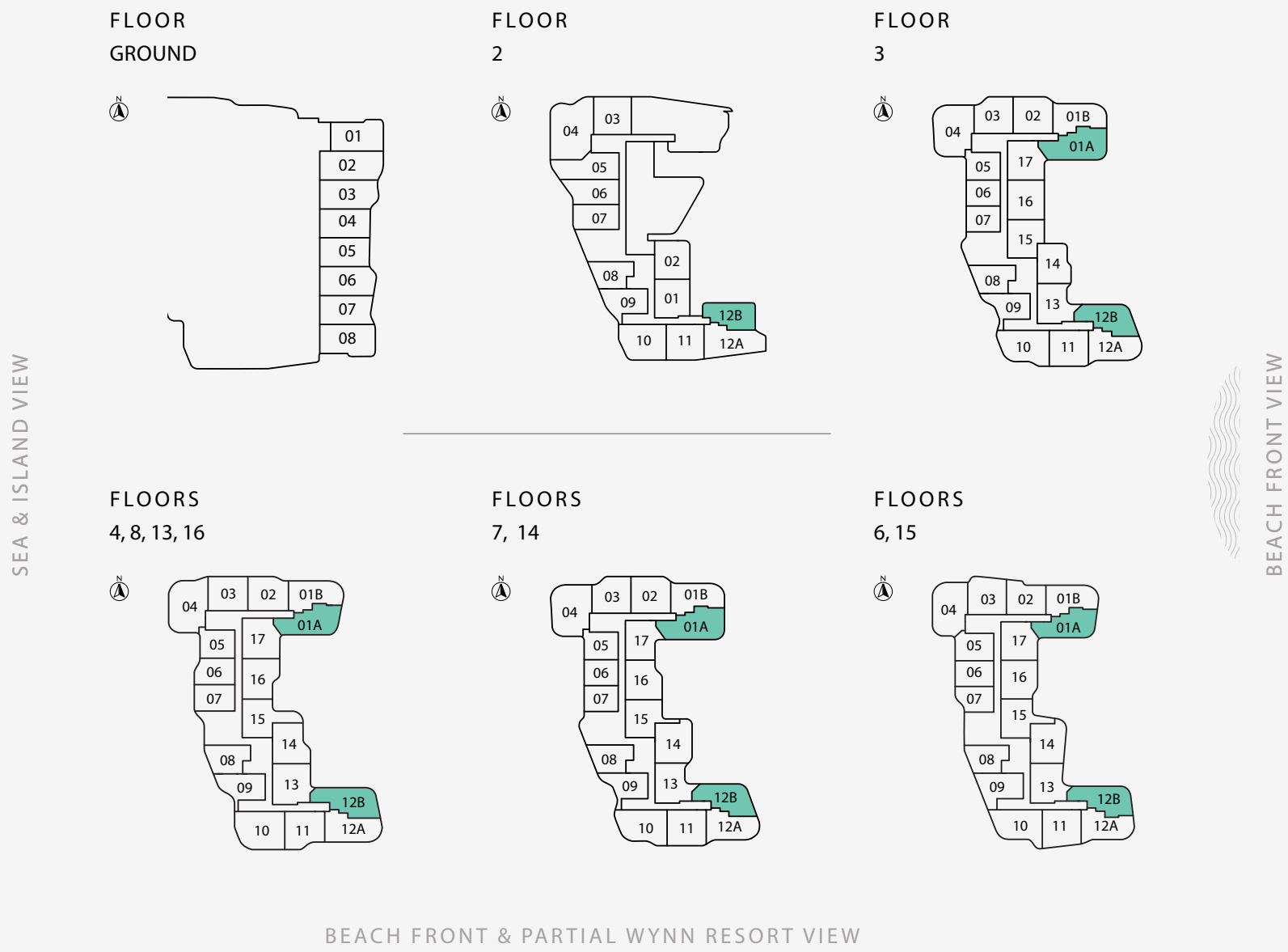
Disclaimer: All pictures, plans, layouts, information, data and details included in this brochure are indicative only and may change at any time up to the final 'as built' status in accordance with final designs of the project, regulatory approvals and planning permissions. All accessories and interior finishes such as wallpaper, chandeliers, furniture, electronics, white goods, curtains, hard and soft landscaping, pavements, features, gym, and other elements displayed in the brochure, or between the plot boundary, are not part of the unit and are shown for illustrative purposes only.





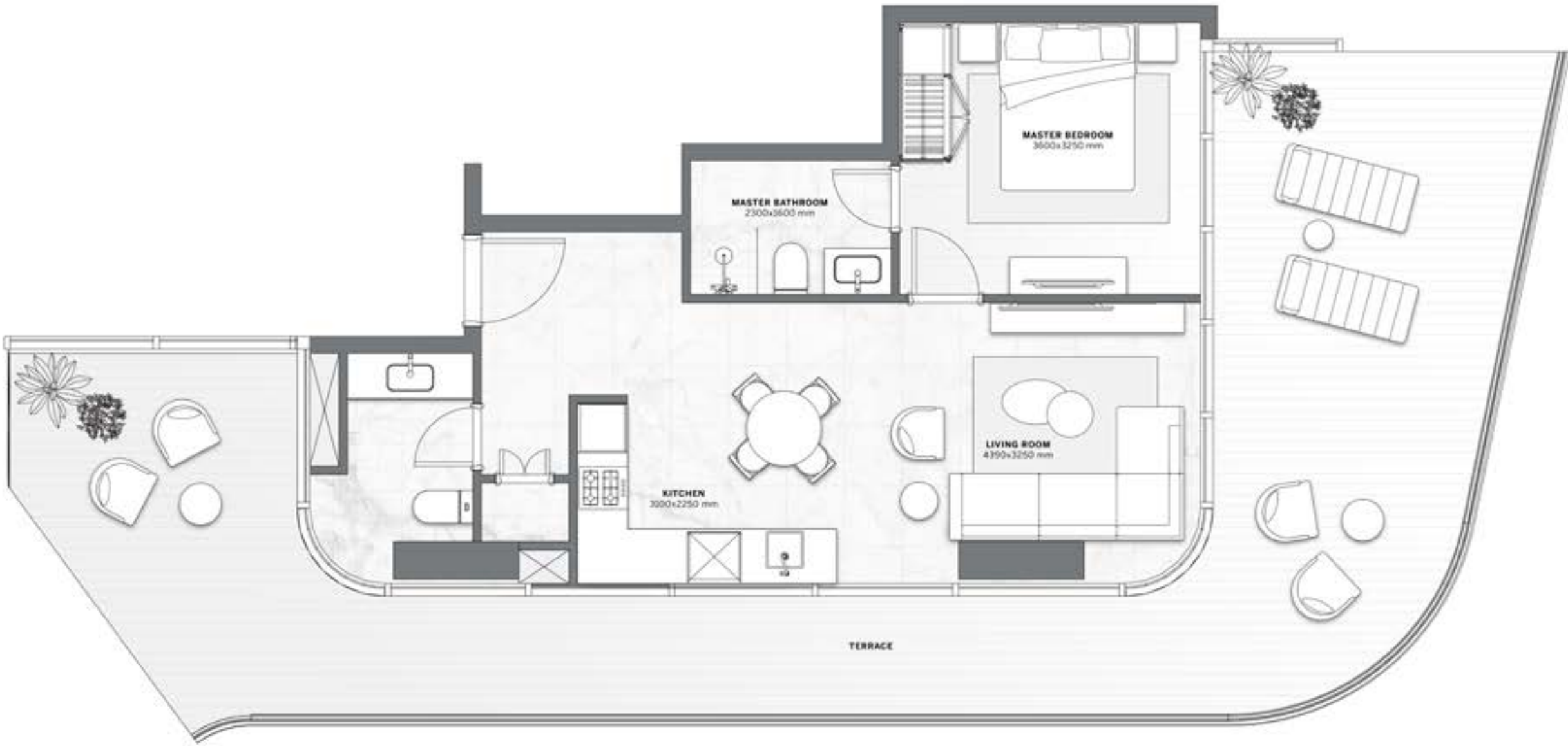
1 BEDROOM  
TYPE D

The Astera  
INTERIORS BY ASTON MARTIN



RESIDENCE	SQM	SQFT
Internal Area	54	581
Balcony Area	47 - 80	506 - 861
Total Built up Area	101 - 134	1,087 - 1,442

Disclaimer: All pictures, plans, layouts, information, data and details included in this brochure are indicative only and may change at any time up to the final 'as built' status in accordance with final designs of the project, regulatory approvals and planning permissions. All accessories and interior finishes such as wallpaper, chandeliers, furniture, electronics, white goods, curtains, hard and soft landscaping, pavements, features, gym, and other elements displayed in the brochure, or between the plot boundary, are not part of the unit and are shown for illustrative purposes only.





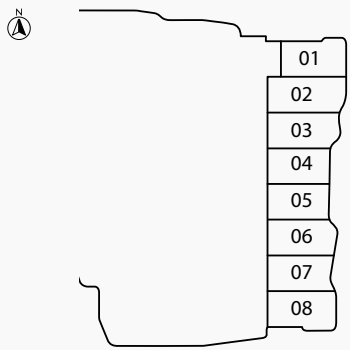
2 BEDROOMS  
TYPE A

The Astera  
INTERIORS BY ASTON MARTIN

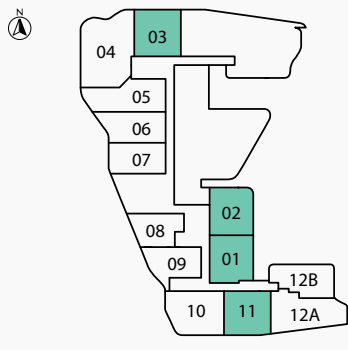


SEA & ISLAND VIEW

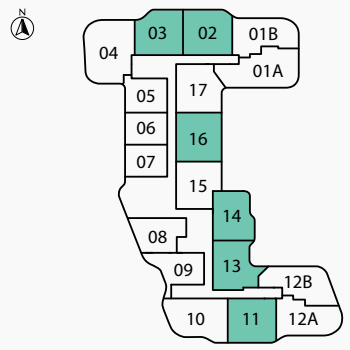
FLOOR  
GROUND



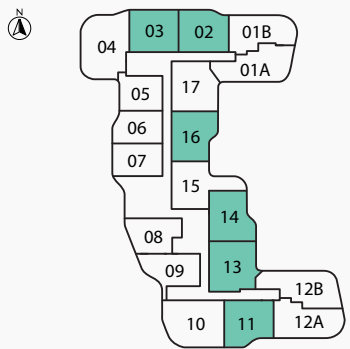
FLOOR  
2



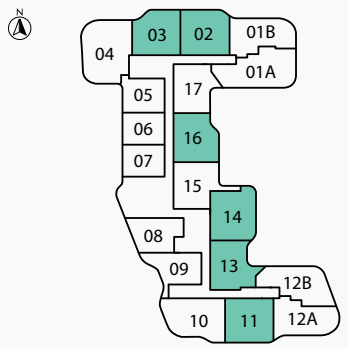
FLOOR  
3



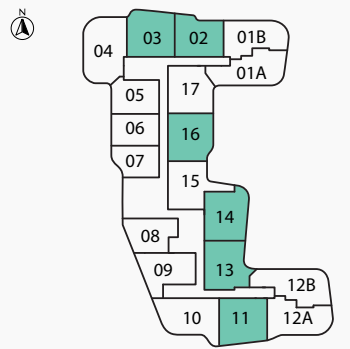
FLOORS  
4, 8, 11, 13, 16



FLOORS  
5, 7, 10, 12, 14



FLOORS  
6, 9, 15

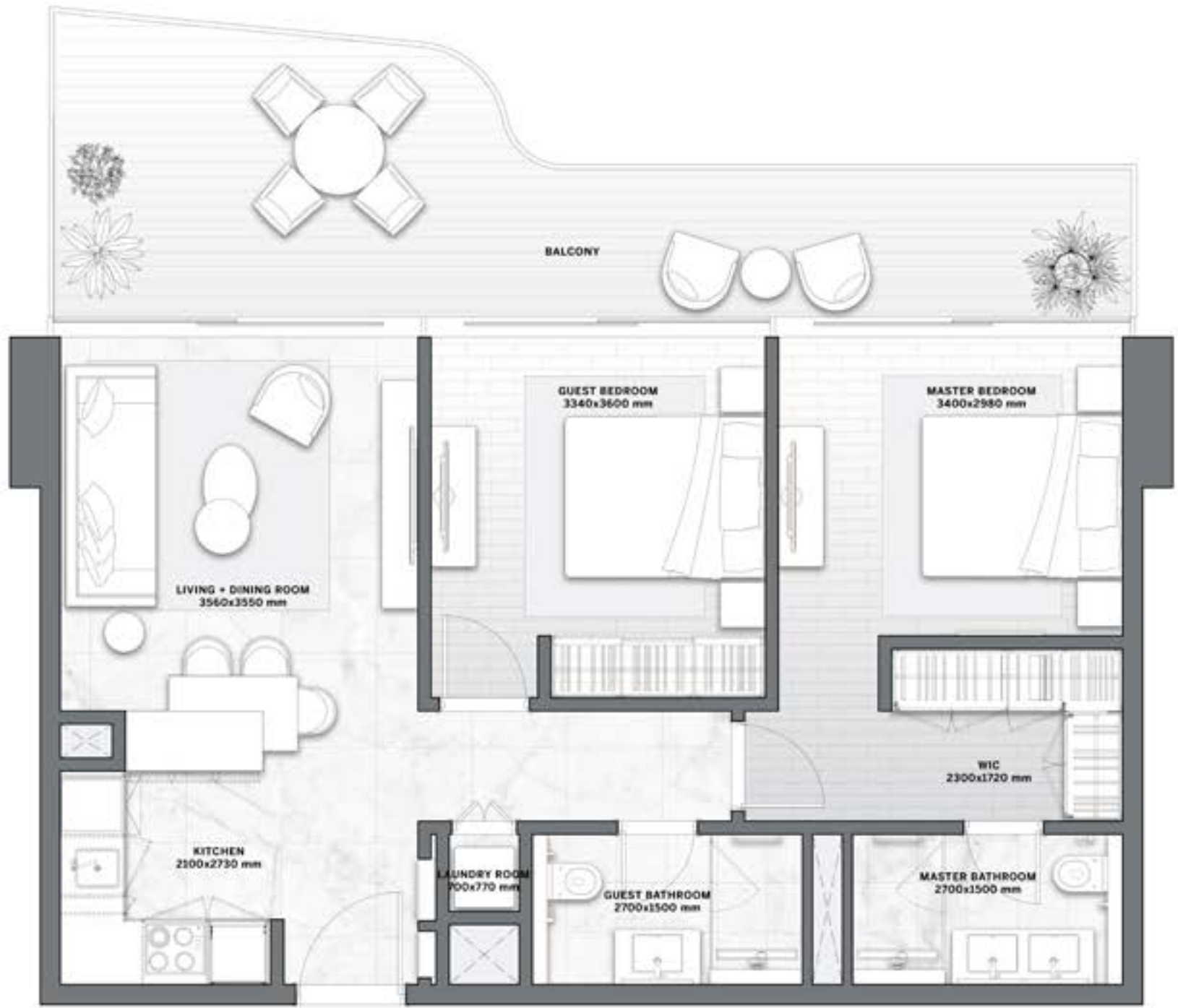


BEACH FRONT VIEW

BEACH FRONT & PARTIAL WYNN RESORT VIEW

RESIDENCE	SQM	SQFT
Internal Area	68 - 73	733 - 786
Balcony Area	23 - 43	252 - 467
Total Built up Area	93 - 116	1,002 - 1,252

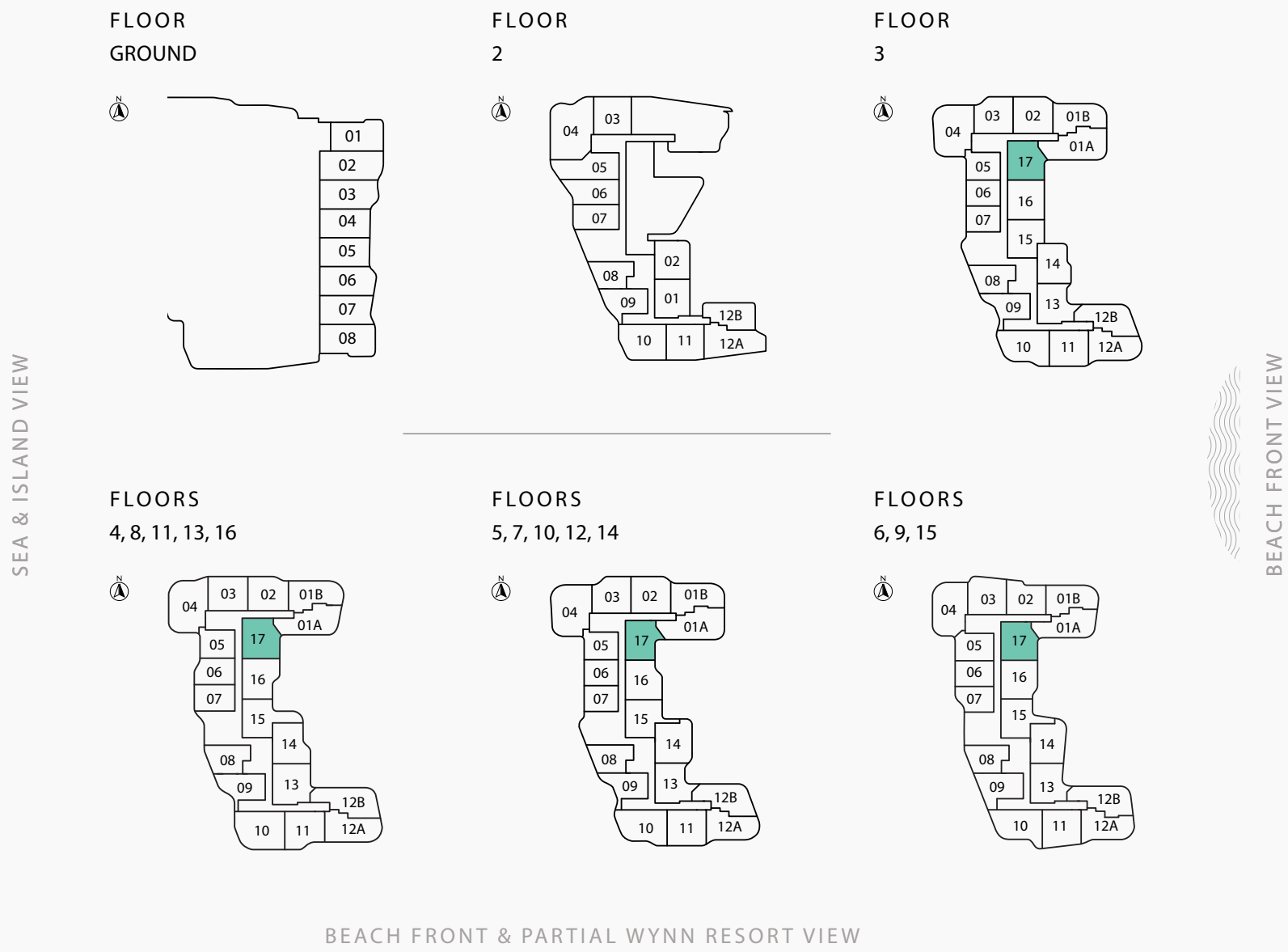
Disclaimer: All pictures, plans, layouts, information, data and details included in this brochure are indicative only and may change at any time up to the final 'as built' status in accordance with final designs of the project, regulatory approvals and planning permissions. All accessories and interior finishes such as wallpaper, chandeliers, furniture, electronics, white goods, curtains, hard and soft landscaping, pavements, features, gym, and other elements displayed in the brochure, or between the plot boundary, are not part of the unit and are shown for illustrative purposes only.





2 BEDROOMS  
TYPE B

The Astera  
INTERIORS BY ASTON MARTIN



RESIDENCE	SQM	SQFT
Internal Area	68	729
Balcony Area	23 - 34	252 - 369
Total Built up Area	91 - 102	981 - 1,098

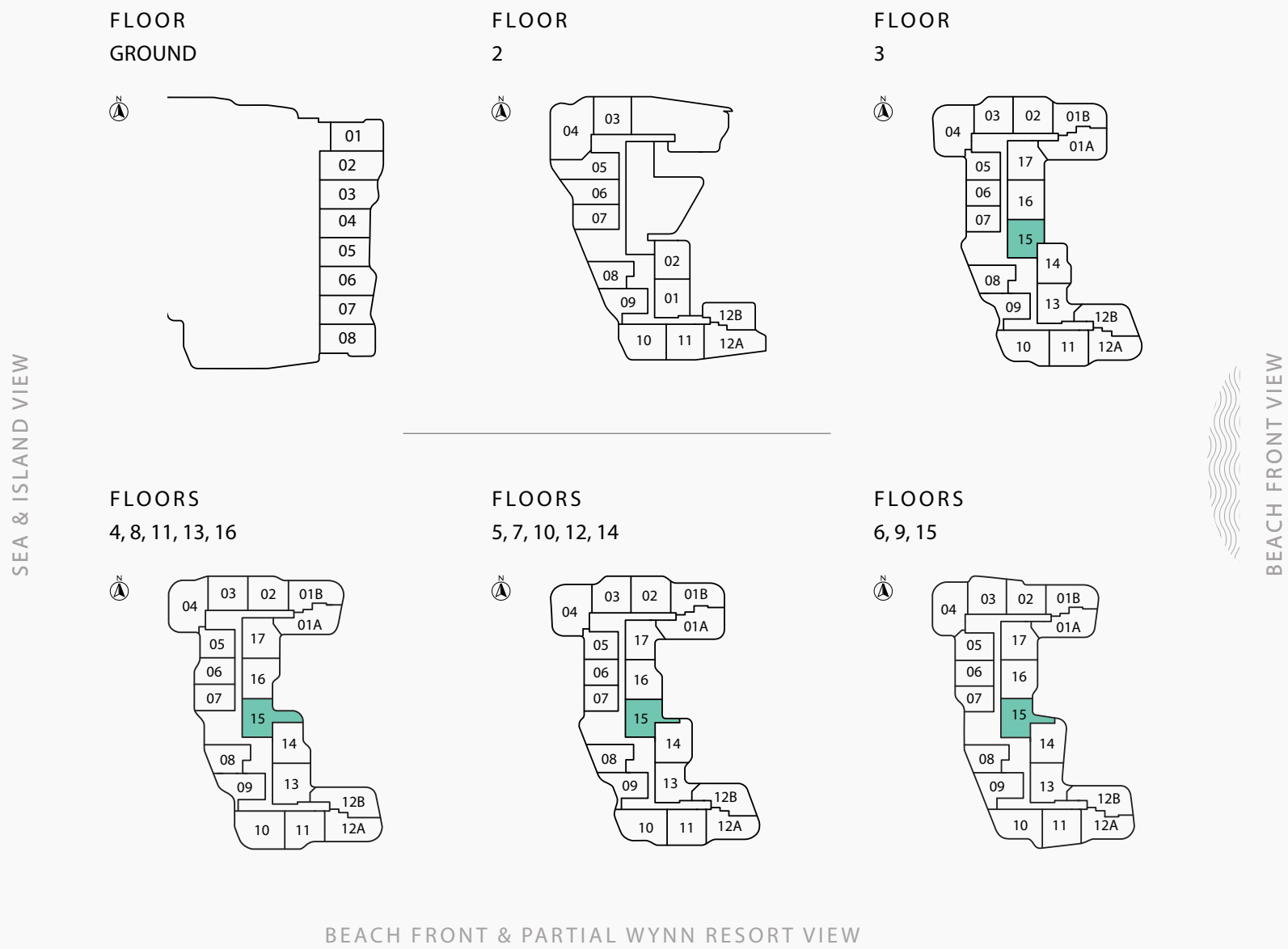


Disclaimer: All pictures, plans, layouts, information, data and details included in this brochure are indicative only and may change at any time up to the final 'as built' status in accordance with final designs of the project, regulatory approvals and planning permissions. All accessories and interior finishes such as wallpaper, chandeliers, furniture, electronics, white goods, curtains, hard and soft landscaping, pavements, features, gym, and other elements displayed in the brochure, or between the plot boundary, are not part of the unit and are shown for illustrative purposes only.



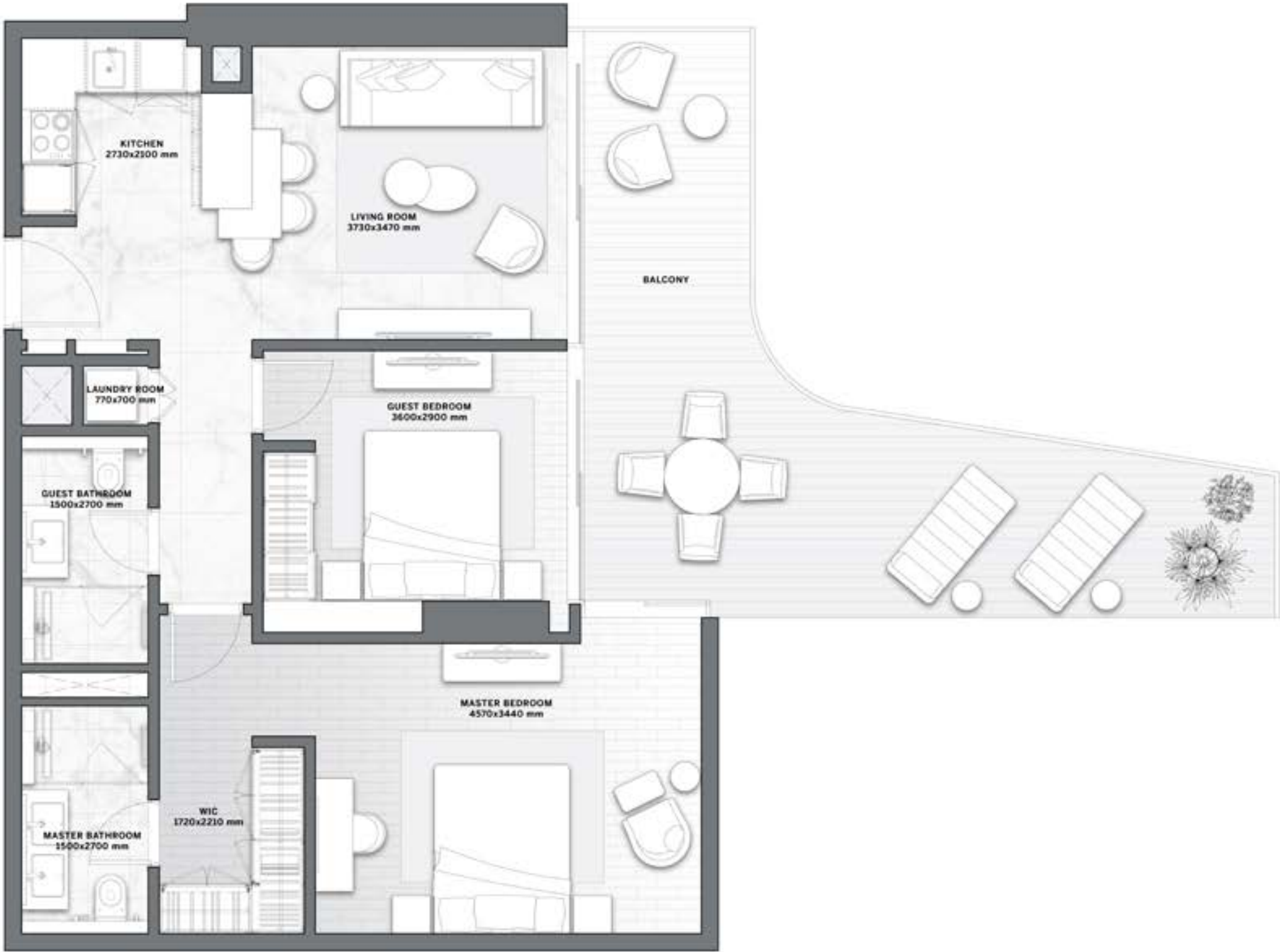
2 BEDROOMS  
TYPE C

The Astera  
INTERIORS BY ASTON MARTIN



RESIDENCE	SQM	SQFT
Internal Area	68 - 75	736 - 810
Balcony Area	24 - 37	260 - 397
Total Built up Area	99 - 111	1,062 - 1,197

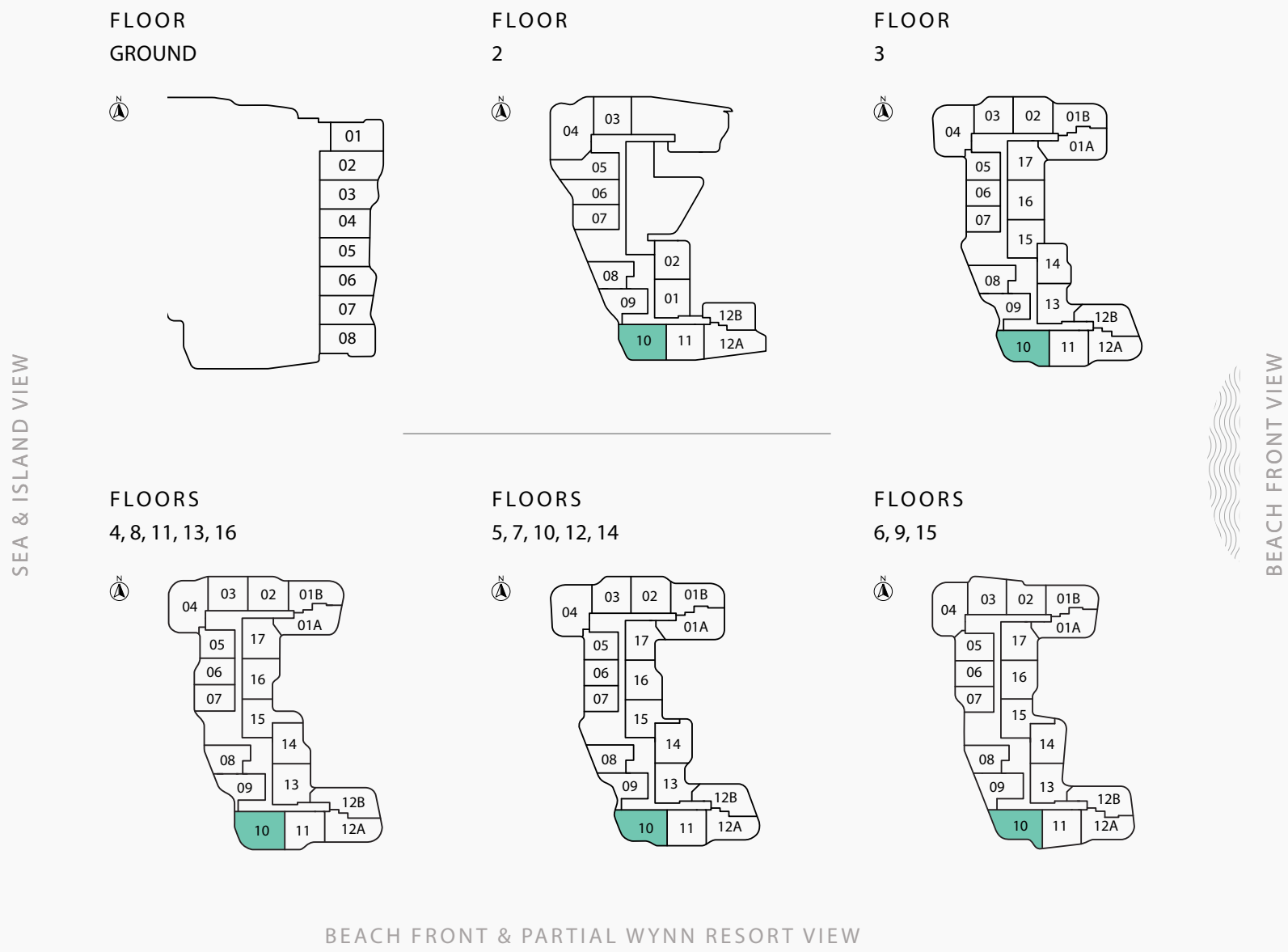
Disclaimer: All pictures, plans, layouts, information, data and details included in this brochure are indicative only and may change at any time up to the final 'as built' status in accordance with final designs of the project, regulatory approvals and planning permissions. All accessories and interior finishes such as wallpaper, chandeliers, furniture, electronics, white goods, curtains, hard and soft landscaping, pavements, features, gym, and other elements displayed in the brochure, or between the plot boundary, are not part of the unit and are shown for illustrative purposes only.





2 BEDROOMS  
TYPE D

The Astera  
INTERIORS BY ASTON MARTIN



RESIDENCE	SQM	SQFT
Internal Area	73	787
Balcony Area	42 - 56	459 - 607
Total Built up Area	116 - 129	1,246 - 1,394

Disclaimer: All pictures, plans, layouts, information, data and details included in this brochure are indicative only and may change at any time up to the final 'as built' status in accordance with final designs of the project, regulatory approvals and planning permissions. All accessories and interior finishes such as wallpaper, chandeliers, furniture, electronics, white goods, curtains, hard and soft landscaping, pavements, features, gym, and other elements displayed in the brochure, or between the plot boundary, are not part of the unit and are shown for illustrative purposes only.





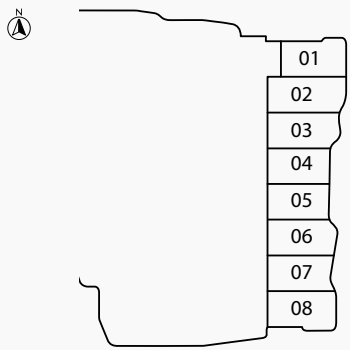
2 BEDROOMS  
TYPE E

The Astera  
INTERIORS BY ASTON MARTIN

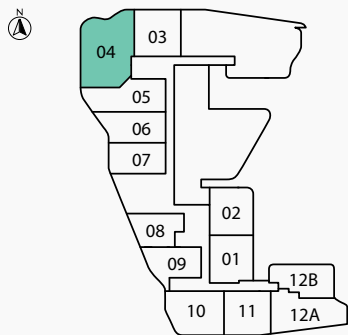


SEA & ISLAND VIEW

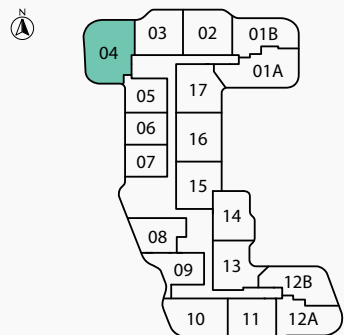
FLOOR  
GROUND



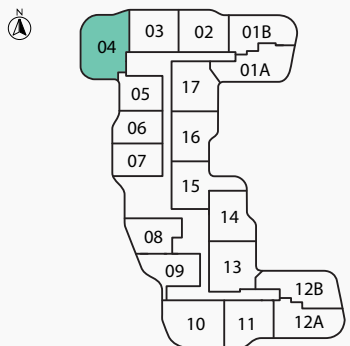
FLOOR  
2



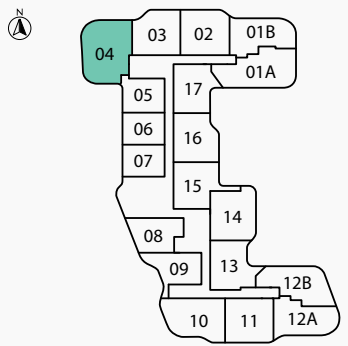
FLOOR  
3



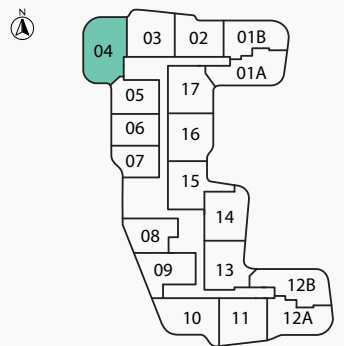
FLOORS  
4, 8, 11, 13, 16



FLOORS  
5, 7, 10, 12, 14



FLOORS  
6, 9, 15



BEACH FRONT VIEW

BEACH FRONT & PARTIAL WYNN RESORT VIEW

RESIDENCE	SQM	SQFT
Internal Area	86	926
Balcony Area	50 - 61	538 - 657
Total Built up Area	136 - 147	1,410 - 1,582

Disclaimer: All pictures, plans, layouts, information, data and details included in this brochure are indicative only and may change at any time up to the final 'as built' status in accordance with final designs of the project, regulatory approvals and planning permissions. All accessories and interior finishes such as wallpaper, chandeliers, furniture, electronics, white goods, curtains, hard and soft landscaping, pavements, features, gym, and other elements displayed in the brochure, or between the plot boundary, are not part of the unit and are shown for illustrative purposes only.





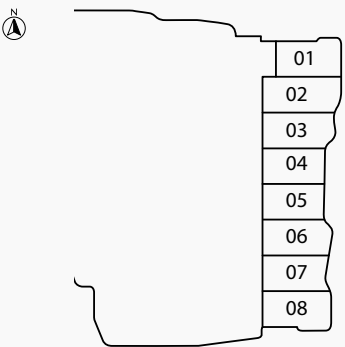
2 BEDROOMS  
TYPE F

The Astera  
INTERIORS BY ASTON MARTIN

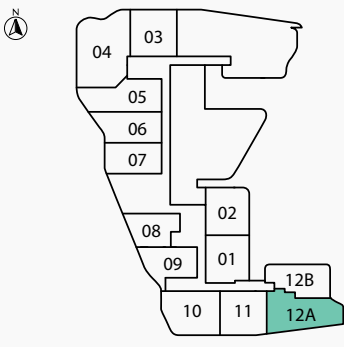


SEA & ISLAND VIEW

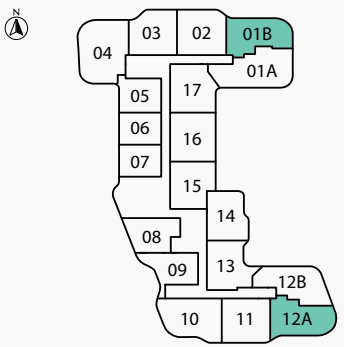
FLOOR  
GROUND



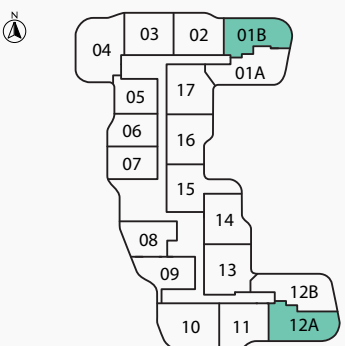
FLOOR  
2



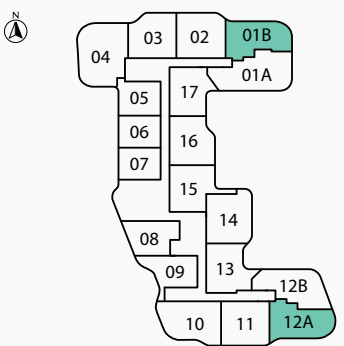
FLOOR  
3



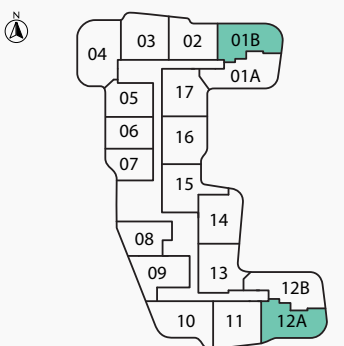
FLOORS  
4, 8, 13, 16



FLOORS  
7, 14

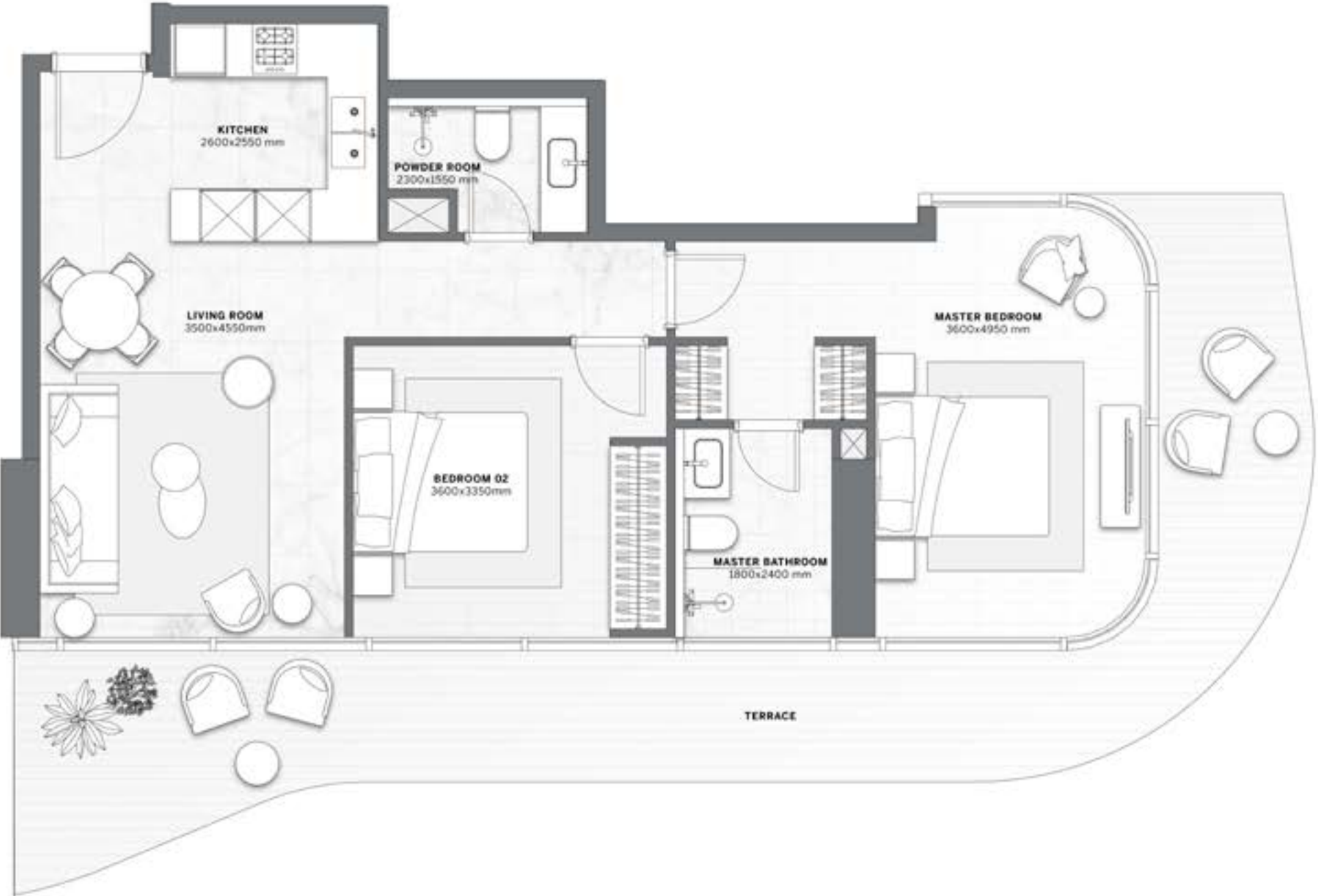


FLOORS  
6, 15



BEACH FRONT & PARTIAL WYNN RESORT VIEW

BEACH FRONT VIEW



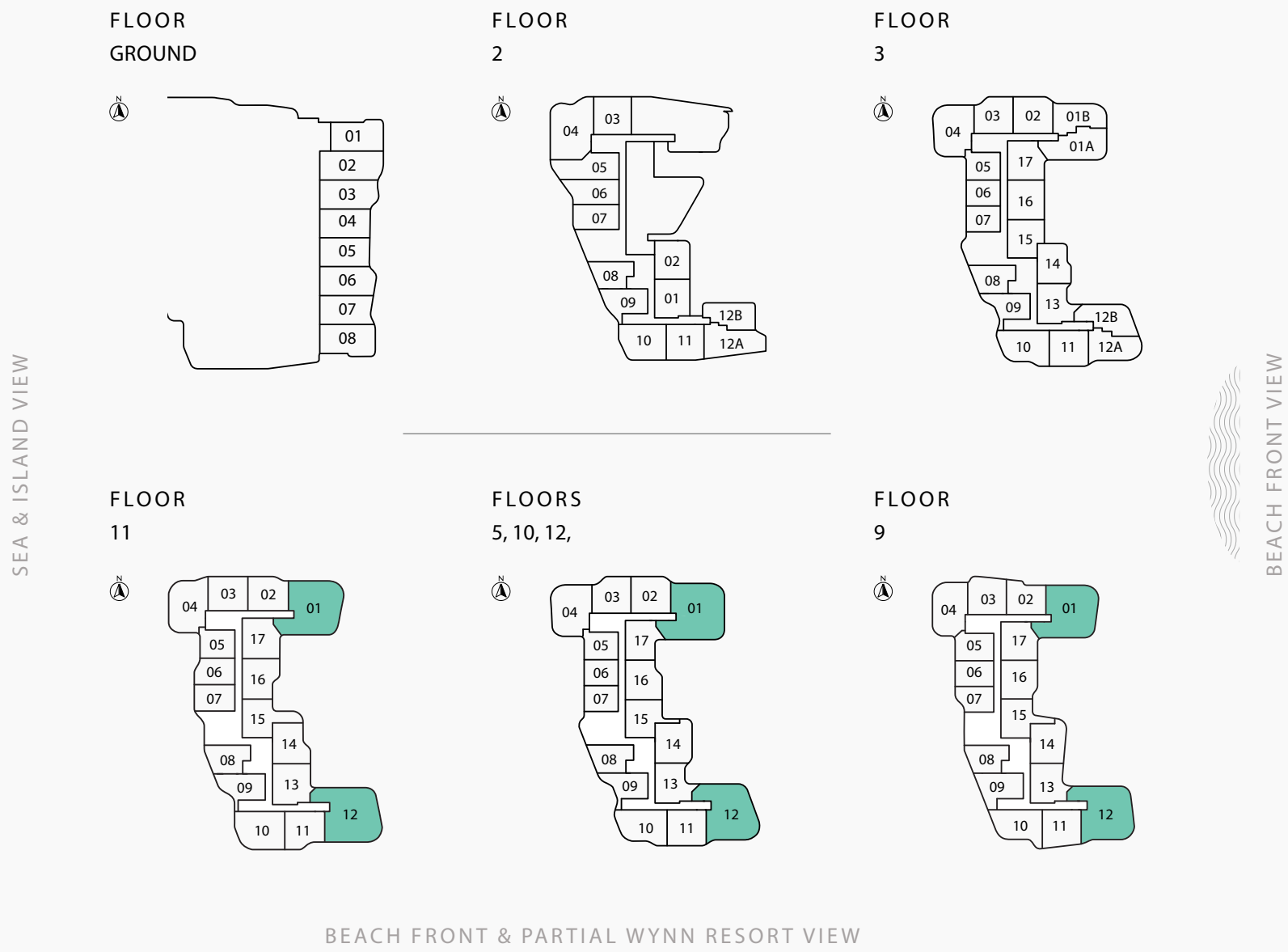
RESIDENCE	SQM	SQFT
Internal Area	74	796
Balcony Area	29 - 35	312 - 377
Total Built up Area	103 - 130	1,109 - 1,399

Disclaimer: All pictures, plans, layouts, information, data and details included in this brochure are indicative only and may change at any time up to the final 'as built' status in accordance with final designs of the project, regulatory approvals and planning permissions. All accessories and interior finishes such as wallpaper, chandeliers, furniture, electronics, white goods, curtains, hard and soft landscaping, pavements, features, gym, and other elements displayed in the brochure, or between the plot boundary, are not part of the unit and are shown for illustrative purposes only.



3 BEDROOMS  
TYPE A

The Astera  
INTERIORS BY ASTON MARTIN



RESIDENCE	SQM	SQFT
Internal Area	136-140	1,466 - 1,508
Balcony Area	89 - 117	961 - 1,264
Total Built up Area	227 - 254	2,443 - 2,730

Disclaimer: All pictures, plans, layouts, information, data and details included in this brochure are indicative only and may change at any time up to the final 'as built' status in accordance with final designs of the project, regulatory approvals and planning permissions. All accessories and interior finishes such as wallpaper, chandeliers, furniture, electronics, white goods, curtains, hard and soft landscaping, pavements, features, gym, and other elements displayed in the brochure, or between the plot boundary, are not part of the unit and are shown for illustrative purposes only.







DarGlobal PLC is an international real estate developer specializing in exclusive luxury developments across the world's most coveted cosmopolitan cities.

Catering to global citizens seeking prime investments, second homes, and luxury living, DarGlobal transforms real estate into economic catalysts, unlocking opportunities for both investors and the countries it enters.

DarGlobal has partnered with over 10 world-renowned luxury brands, including Trump Organization, Aston Martin, Automobili Lamborghini, ELIE SAAB, Marriott Residences, Missoni, Mouawad, Pagani Automobili, W Hotels, and Versace. These collaborations offer unique investment opportunities in global cities, providing both wealth growth and protection.

Listed on the London Stock Exchange, DarGlobal goes beyond property development, it drives economic transformation by attracting international clients and Foreign Direct Investment (FDI). By injecting capital, confidence, and industry expertise, DarGlobal enhances local infrastructure while elevating the global appeal of each destination.

With a presence in 14 international cities across 9 countries, DarGlobal's portfolio spans the United Kingdom, Spain, Greece, Saudi Arabia, the UAE, Oman, and Qatar. The company is also expanding into world-class hospitality, developing luxury hotels in Dubai, the Maldives, and Oman.

To support its international clientele, DarGlobal has sales and customer service offices in New York, London, Marbella, Athens, Dubai, Jeddah, Riyadh, Muscat, and Doha.



**LONDON  
STOCK  
EXCHANGE**



OUR OFFICES



DUBAI, UAE

Jumeirah Emirates Towers  
30th Floor, Sheikh Zayed Road,  
PO Box 2523, Dubai, UAE  
+971 4 562 9616

MUSCAT, OMAN

Royal Opera House Muscat  
Shatti Al Qurum,  
Muscat, Oman  
+968 2270 2771

MARBELLA, SPAIN

Marbella Club Golden Mile,  
Av. Bulevar Principe Alfonso de  
Hohenlohe, Marbella 29602  
Málaga, Spain  
+34 951 121 221

LONDON, UK

50 Hans Crescent,  
Knightsbridge, London,  
SW1X 0NA, UK  
+44 20 8135 4699

DOHA, QATAR

Malibu Building,  
Lusail Entertainment City,  
Doha, Qatar  
+974 4410 8282

RIYADH, KSA

2135 Tahlia St.,  
Al Olaya, 12222  
Riyadh, KSA  
+966 800 118 8081

JEDDAH, KSA

Ash Shati, 23613,  
King Abdulaziz Road,  
Jeddah, KSA  
+966 800 118 8081

NEW YORK CITY, USA

19th floor - Trump Tower  
New York, 725 5th Ave,  
NY 10022, USA  
+1 212 715 1067

For more information on The Astera, Interiors by Aston Martin  
please call +971 4 562 9616 (UAE)

You can visit our website at [darglobal.co.uk](http://darglobal.co.uk)  
or via our social media platforms







Joint Development Partner



## ABOUT AARVEES

Aarvees, established in 1994, has been a pioneer in transforming Dubai's skyline. Specializing in real estate development, entertainment, logistics, and hospitality, Aarvees is committed to delivering world-class projects that enhance the quality of life and foster sustainable growth. The company integrates innovative solutions and maintains the highest standards of integrity and customer satisfaction. Through strategic partnerships and a visionary approach, Aarvees continuously shapes the future of the UAE, reflecting its dedication to excellence and community development.









DARGLOBAL.CO.UK

Joint Development Partner

