



National Musical Theater Awards (Jimmy Awards) Preparation Guide

Your name is called as the IHSMTA representative for the Jimmy Awards! What do you need to know now? Use this guide to help you prepare for what you will need to know and have.

Night of IHSMTA Showcase (Thursday, May 29, 2025)

1. **Encore Performance:** After your name is called, you will get the opportunity to perform an Encore Performance on stage. This will be one of your audition songs. An education staff member will be backstage to help you get ready.
2. **Award Recipient Meeting:** Directly following the showcase, you and your family will be welcomed into the Stoner Theater for additional information. You will be directed there by program staff. Your family will be prompted to meet you there.

Jimmy Awards Prep Day (Friday, May 30, 2025)

1. You and at least 1 parent/guardian are required to attend from 9:00am – 2:00 pm.
 - a. *Lunch will be provided*
 - b. *Hotel assistance will be provided if needed*
2. There are a few different activities you will rotate through:
 - a. Professional Headshots – with Dan Welk
 - b. Topic Response Video – Recorded interview
 - c. Music Sing Through and Selection – with Cason Murphy & Francine Griffith
 - d. Paperwork updates
3. At the same time your parent/guardian(s) will be working through:
 - a. Paperwork
 - b. Travel information
 - c. Ticketing information

Music, Materials, and Outfits

You will be given a comprehensive list of what to bring / prepare for the Jimmy's on Prep Day. Here is a high-level overview of what you will be asked for.

Music | Bring these with you to Showcase in a binder. PRINTED, the whole song (not just your cut).

1. 2 songs from your Nominated Role (from your musical)
2. 2 Up-Tempo Songs of your choice
3. 2 Ballad Songs of your choice
4. You will work on the cuts of these songs with Cason & Francine

Materials | MK & Maddie will have these printed for you.

1. Essay
2. Bio
3. Resume

Outfits | You do NOT need to bring these with you to Showcase. However, you will be taking a video at home by noon on Saturday, May 31 and sending it back to Maddie.



National Musical Theater Awards (Jimmy Awards) Preparation Guide

Take a look at your wardrobe and make a mental note if you have something that fits these descriptions. *DO NOT BUY ANYTHING UNTIL YOUR NAME IS CALLED.* 😊

1. Solo Outfit

- a. Fabrics should be solid colors (no patterns) and matte or dull finish (not shiny or shimmery)
- b. Black suit, black dress pants, or black dress skirt with:
 - i. 2 contrasting, collared, button-down dress shirts OR blouses – one white and one vibrantly colored (solid colors only, please)
 - ii. (Optional) Tie, standard tie or bow tie – solid black
 - iii. (Optional) Vest, suspenders, or suit jacket – solid black
- c. Knee-length black dress
 - i. No mini-skirts or mid-thigh length dresses
 - ii. o Wrap style tops must be secured or sewn closed
 - iii. (Optional) Black spanks or trunks
- d. Dressy black jumpsuit
- e. Shoes & Accessories
 - i. Black dress shoes of choice (character shoes, heels, dress shoes, etc.)
 - ii. Black socks, if applicable to shoe choice
 - iii. (Optional) 2 – 3 inch black character shoes
 - iv. (Optional) Skin tone tights

2. Warm Color Outfit | Solid red, orange, yellow, or pink formal outfit(s)

- a. Fabrics should be solid colors (no patterns) and matte or dull finish (not shiny or shimmery)
- b. Black suit, dress pants, or dress skirt with a red, orange, yellow, or pink collared, button-down dress shirt OR blouse
- c. Knee-length dress in solid red, orange, yellow, or pink
 - i. No mini-skirts or mid-thigh length dresses
 - ii. Wrap style tops must be secured or sewn closed
 - iii. (Optional) Black spanks or trunks
- d. Dressy jumpsuit in solid red, orange, yellow, or pink
- e. Shoes & Accessories
 - i. Red, orange, yellow, or pink accessory such as a suit jacket, belt, vest, tie, suspenders, etc.
 - ii. 2 – 3 inch skin tone character shoes,

3. Cool Color Outfit | Solid purple, blue, or green formal outfit(s)

- a. Fabrics should be solid colors (no patterns) and matte or dull finish (not shiny or shimmery)
- b. Black suit, dress pants, or dress skirt with a purple, blue, or green collared, button-down dress shirt OR blouse
- c. Knee-length dress in solid purple, blue, or green
 - i. No mini-skirts or mid-thigh length dresses



National Musical Theater Awards (Jimmy Awards) Preparation Guide

- ii. Wrap style tops must be secured or sewn closed
 - iii. (Optional) Black spunks or trunks
- d. Dressy jumpsuit in solid purple, blue, or green
- e. Shoes & Accessories
 - i. Purple, blue, or green accessory such as a suit jacket, belt, vest, tie, suspenders, etc.
 - ii. 2 – 3 inch skin tone character shoes,
- 4. (optional) **Nominated Role Costume**
 - a. IF you have access to a costume you used in your production AND it is easily able to fit inside of your suitcase, then you can send a video of this as well.
 - b. If you do not have access to a costume or your costume is not easily able to fit inside your suitcase, then don't worry! If you are chosen for a character medley, they have access to all of Broadway to make you look the part.

May 31 – June 12

You will have a couple of “homework” things to do as you prepare for your trip. We will go over all of this on Friday, May 30.

1. 360 Wardrobe Videos
2. Thank You Notes to Donors & Your Teacher!
3. Videos to send to Donors

June 13 – June 24 – THE JIMMY AWARDS!

Chaperone: Maddie Nau

Depart Des Moines: Friday, June 13

Jimmy Award Preparation week: June 14 – June 22

JIMMY AWARDS SHOWCASE: Monday, June 23

Depart NYC: Tuesday, June 24

Attached Resources

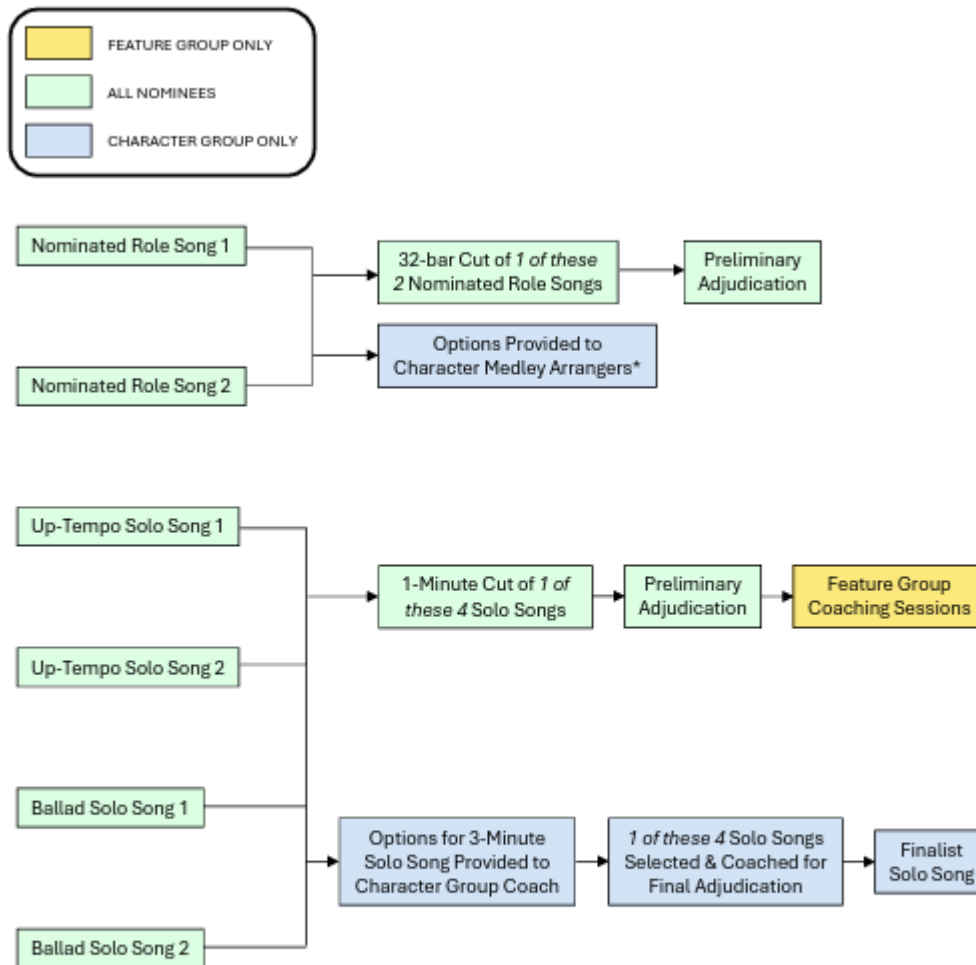
[Flow Chart of Required Songs](#)

[Flow Chart of Required Outfits](#)

[Jimmy's Nominee Performance Groups & Adjudication Process](#)

National Musical Theater Awards (Jimmy Awards) Preparation Guide

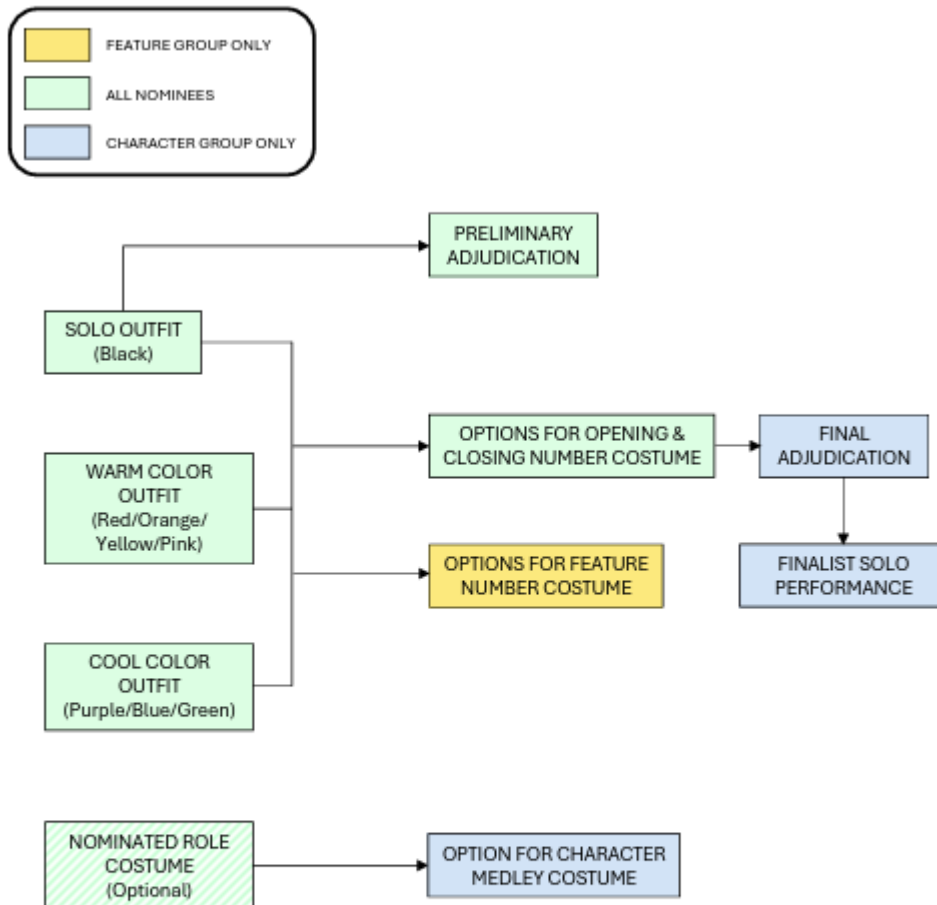
MUSIC SELECTIONS FLOWCHART



*While these song options are provided to the Character Medley Arrangers, the Medley Arranger, Music Supervisor, & Ceremony Director make all music selection determinations and may choose to feature a different song from a Nominee's Nominated Role.

National Musical Theater Awards (Jimmy Awards) Preparation Guide

WARDROBE & COSTUMES FLOWCHART



IMPORTANT NOTE:

The Costume Coordinator, Ceremony Director, and Ceremony Choreographer make all costume determinations. Regardless of which costume elements you bring with you to New York City, the Costume Coordinator may provide you with costume pieces to supplement and/or replace items you bring.



National Musical Theater Awards (Jimmy Awards) Preparation Guide



8. NOMINEE PERFORMANCE GROUPS & ADJUDICATION PROCESS

Following master class-style sessions with Jimmy Awards audition coaches, the Nominees will participate in a Preliminary Adjudication on Monday, June 16th. The preliminary judging panel will include casting directors, producers, and other industry professionals. At this adjudication, the Nominees will perform a 32-bar cut of a song from the role for which they were nominated in addition to a one-minute cut of a Solo Song of their choice. **Nominees must provide two (2) copies of their own piano sheet music with their cuts clearly marked to be used both during Preliminary Coaching sessions and the Preliminary Adjudication.** The results of this Preliminary Adjudication will determine the Nominees' Performance Group assignments and award eligibility.

Those Nominees assigned to The Character Group will continue to be in consideration for Finalist and Best Performance awards and scholarships. Those Nominees assigned to The Feature Group will no longer be in consideration for Finalist or Best Performance awards and scholarships, though they will continue to be eligible for all other awards and scholarships.

Forty (40) Nominees – twenty (20) Best Actress and twenty (20) Best Actor Nominees – will be assigned to The Character Group. All other Nominees will be assigned to The Feature Group. **All Nominees in both groups will perform in both the Opening Number and Closing Number on the stage of the Minskoff Theatre.**

Character Group nominees will perform a selection from the role for which they were nominated, in medley format, on the stage of the Minskoff. This group will not perform in the Feature Number.

Feature Group nominees will perform on the stage of the Minskoff in a themed group number. This group will not perform in a Character Medley.

The Sunday immediately before the ceremony, Nominees will showcase the Opening Number and the Feature Group Number for the Minskoff Judges, a panel of experts comprised of producers, casting directors, and industry professionals. Those Nominees in The Character Group will participate in a Final Adjudication during which they will perform their Character Medleys and will each sing one solo song up to three minutes in duration prepared during the week with Broadway coaches. Following this Adjudication, the Minskoff Judges will select eight (8) Finalists – four (4) Best Actress Nominees and four (4) Best Actor Nominees. All eight (8) Finalists will receive award scholarships.

Those eight (8) Finalists will be announced and recognized at the ceremony and will sing their selected solo songs on the Minskoff stage during the second act. From these eight (8) Finalists, the judges will choose the winners of the Jimmy Awards for Best Performance by an Actress and Best Performance by an Actor by ballot vote live during the second act of the ceremony.

Additional awarded scholarships this year will include Best Dancer, Rising Star, Outstanding Performance in an Ensemble (5), and Spirit of the Jimmys, for a total of sixteen (16) individual scholarships.

Below is an overview of which awards and scholarships are available to the Nominees in each Performance Group.



National Musical Theater Awards (Jimmy Awards) Preparation Guide



Recipients of the following awards and scholarships will be selected from The Character Group **only**:

- Best Performance by an Actress
- Best Performance by an Actor
- Finalist (6)

Recipients of the following awards and scholarships will be selected from The Feature Group **only**:

- Outstanding Performance in an Ensemble (5)
- Rising Star

Recipients of the following awards and scholarships will be selected from either of the two performance groups:

- Best Dancer
- Spirit of the Jimmys

The Jimmy Awards Adjudication Rubric is provided on page 62 (*Reference Form I*) of this packet.

A flow chart of awards and scholarships as they relate to Performance Groups is on the next page (page 13) of this packet.