

THE BOLD NEW AGE



ALL-NEW ISUZU

D-MAX

EXTENDED CAB SPECIFICATIONS

Introducing the All-New ISUZU D-MAX, our Boldest Bakkie yet.

MODEL SHOWN: D-MAX 1.9 Extended Cab LS

www.isuzu.co.za    

ISUZU

With you, for the long run

ISUZU'S legendary commitment to excellence, combined with the latest in cutting-edge technology, has produced a truly exceptional addition to its range – the all-new ISUZU D-MAX.

When the going gets tough, you can rely on the new ISUZU D-MAX Extended Cab to have your back. Hard-working and economical, it also offers the perfect combination of cabin storage and load space.



MODEL SHOWN: D-MAX 1.9 Extended Cab LS

ISUZU D-MAX EXTENDED CAB SPECIFICATIONS

| MODELS | D-MAX 1.9 Ddi HR 4X2 M/T | D-MAX 1.9 Ddi HR L 4X2 M/T | D-MAX 1.9 Ddi HR LS 4X2 M/T | D-MAX 1.9 Ddi HR LS 4X2 A/T | D-MAX 3.0 Ddi LSE 4X2 A/T | D-MAX 3.0 Ddi LSE 4X4 A/T |
|--|--------------------------|----------------------------|-----------------------------|-----------------------------|---------------------------|---------------------------|
| ENGINE | | | | | | |
| Engine Code | RZ4E-MID | RZ4E-MID | RZ4E-MID | RZ4E-MID | 4JJ3 | 4JJ3 |
| Displacement (cc) | 1 898 | 1 898 | 1 898 | 1 898 | 2 999 | 2 999 |
| No. of Cylinders | 4 | 4 | 4 | 4 | 4 | 4 |
| Compression Ratio | 16.5:1 | 16.5:1 | 16.5:1 | 16.5:1 | 16.3:1 | 16.3:1 |
| Bore X Stroke (mm) | 80 X 94.4 | 80 X 94.4 | 80 X 94.4 | 80 X 94.4 | 95.4 X 104.9 | 95.4 X 104.9 |
| No. of Valves | 16 | 16 | 16 | 16 | 16 | 16 |
| Power (kW) @ r/min | 110 @ 3 600 | 110 @ 3 600 | 110 @ 3 600 | 110 @ 3 600 | 140 @ 3 600 | 140 @ 3 600 |
| Torque (Nm) @ r/min | 350 @ 1 800 – 2 600 | 350 @ 1 800 – 2 600 | 350 @ 1 800 – 2 600 | 350 @ 1 800 – 2 600 | 450 @ 1 600 – 2 600 | 450 @ 1 600 – 2 600 |
| Turbocharger | Standard | Standard | Standard | Standard | Standard | Standard |
| 800 mm Water Depth Protection | Standard | Standard | Standard | Standard | Standard | Standard |
| Pre-Air Cleaner | Standard | Standard | Standard | Standard | Standard | Standard |
| ACG (90 A) | Standard | Standard | Standard | Standard | Standard | Standard |
| ACG with with Intelligent Battery System (IBS) | Standard | Standard | Standard | Standard | Standard | Standard |
| Intercooler | Standard | Standard | Standard | Standard | Standard | Standard |

| FUEL CONSUMPTION¹ | | | | | | |
|---|--------|--------|--------|--------|--------|--------|
| Combined Cycle (Litres/100 km) | 7.1 | 7.1 | 7.1 | 7.3 | 7.9 | 7.9 |
| Combined CO ₂ Emissions (g/km) | 186 | 186 | 186 | 192 | 208 | 208 |
| Fuel Type | Diesel | Diesel | Diesel | Diesel | Diesel | Diesel |

| TRANSMISSION | | | | | | |
|---------------------|----------------|----------------|----------------|-------------------|-------------------|-------------------|
| Transmission Type | 6-Speed Manual | 6-Speed Manual | 6-Speed Manual | 6-Speed Automatic | 6-Speed Automatic | 6-Speed Automatic |
| Gear Ratio: 1st | 4.942 | 4.942 | 4.942 | 3.600 | 3.600 | 3.600 |
| Gear Ratio: 2nd | 2.686 | 2.686 | 2.686 | 2.090 | 2.090 | 2.090 |
| Gear Ratio: 3rd | 1.527 | 1.527 | 1.527 | 1.488 | 1.488 | 1.488 |
| Gear Ratio: 4th | 1.000 | 1.000 | 1.000 | 1.000 | 1.000 | 1.000 |
| Gear Ratio: 5th | 0.749 | 0.749 | 0.749 | 0.687 | 0.687 | 0.687 |
| Gear Ratio: 6th | 0.634 | 0.634 | 0.634 | 0.580 | 0.580 | 0.580 |
| Gear Ratio: Reverse | 4.597 | 4.597 | 4.597 | 3.732 | 3.732 | 3.732 |
| 4WD Selector | - | - | - | - | - | Standard |
| Low Range Ratio | - | - | - | - | - | 2.482 |

| FRONT DIFFERENTIAL | | | | | | |
|--------------------------------------|---|---|-----|-----|-------|----------|
| Shift on the Fly up to 100 km / hour | - | - | - | - | - | Standard |
| Axle Ratio: Final Drive | - | - | 4.1 | 4.1 | 3.727 | 3.727 |

| REAR DIFFERENTIAL | | | | | | |
|--------------------------|-----|-----|-----|-----|----------|----------|
| Differential Lock | - | - | - | - | Standard | Standard |
| Axle Ratio: Final Drive | 4.1 | 4.1 | 4.1 | 4.1 | 3.727 | 3.727 |

| CHASSIS DESIGN | | | | | | |
|------------------------|--------------------------|--------------------------|--------------------------|--------------------------|--------------------------|--------------------------|
| Front Wheel Suspension | Coil Over Shock | Coil Over Shock | Coil Over Shock | Coil Over Shock | Coil Over Shock | Coil Over Shock |
| Rear Wheel Suspension | Leaf Spring Overslung | Leaf Spring Overslung | Leaf Spring Overslung | Leaf Spring Overslung | Leaf Spring Overslung | Leaf Spring Overslung |
| Shock Absorbers | Twintube Gas Pressurised | Twintube Gas Pressurised | Twintube Gas Pressurised | Twintube Gas Pressurised | Twintube Gas Pressurised | Twintube Gas Pressurised |
| Suspension | High-Ride | High-Ride | High-Ride | High-Ride | High-Ride | High-Ride |
| Skid Plate Guard Front | Standard | Standard | Standard | Standard | Standard | Standard |
| Skid Plate Guard Rear | Standard | Standard | Standard | Standard | Standard | Standard |
| Transfer Case Guard | - | - | - | - | - | Standard |
| Oil Pan Guard | Standard | Standard | Standard | Standard | Standard | Standard |

| MODELS | D-MAX 1.9 Ddi HR 4X2 M/T | D-MAX 1.9 Ddi HR L 4X2 M/T | D-MAX 1.9 Ddi HR LS 4X2 M/T | D-MAX 1.9 Ddi HR LS 4X2 A/T | D-MAX 3.0 Ddi LSE 4X2 A/T | D-MAX 3.0 Ddi LSE 4X4 A/T |
|--------------------------|--|---|--|--|--|--|
| EXTERIOR FEATURES | | | | | | |
| Front Wiper | Variable Intermittent | Variable Intermittent | Variable Intermittent | Variable Intermittent | Auto, Rain Sensing | Auto, Rain Sensing |
| Radiator Grille | Grey | Grey | Metallic Grey | Metallic Grey | Chrome | Chrome |
| Front Bumper | Painted Black | Painted Black | Body Colour | Body Colour | Body Colour | Body Colour |
| Rear Bumper | Painted Black | Painted Black | Body Colour | Body Colour | Body Colour | Body Colour |
| Towbar | - | Optional (2.1T) | Optional (2.1T) | Optional (2.1T) | Standard (3.5T) | Standard (3.5T) |
| Exterior Door Handle | Black | Black | Body Colour | Body Colour | Chrome | Chrome |
| Exterior Mirror | Black, Manual Adjustment, Driver Side Aspherical | Black, Power Adjustment, Driver Side Aspherical | Body Colour, Power Adjustment and Manual Folding, Side Indicator, Driver Side Aspherical | Body Colour, Power Adjustment and Manual Folding, Side Indicator, Driver Side Aspherical | Chrome, Power Adjustment and Folding, Heated, Side Indicator, Driver Side Aspherical | Chrome, Power Adjustment and Folding, Heated, Side Indicator, Driver Side Aspherical |
| B-Pillar Blackout | - | - | - | - | - | - |
| Roof Rails | - | - | - | - | - | - |
| Sports Bar | - | - | - | - | Standard, Chrome | Standard, Chrome |
| Side Steps | - | - | Standard, Black | Standard, Black | Standard, Black | Standard, Black |
| Mudflaps | Front and Rear | Front and Rear | Front and Rear | Front and Rear | Front and Rear | Front and Rear |
| Tailgate Handle | Black | Black | Body Colour | Body Colour | Chrome | Chrome |

| INTERIOR FEATURES | | | | | | |
|--|-------------------------------|---|---|---|---|---|
| Power-Assisted Steering (PAS) | Hydraulic | Hydraulic | Hydraulic | Hydraulic | Hydraulic | Hydraulic |
| Air-Conditioner | Manual | Manual | Manual | Manual | Automatic, Dual Zone | Automatic, Dual Zone |
| Pollen Filter | Standard | Standard | Standard | Standard | Standard | Standard |
| Rear View Mirror, Inside | Day / Night | Day / Night | Day / Night | Day / Night | Day / Night | Day / Night |
| Sun Visor | Driver and Passenger | Driver with Ticket Holder, Passenger with Vanity Mirror | Driver with Ticket Holder, Passenger with Vanity Mirror | Driver with Ticket Holder, Passenger with Vanity Mirror | Driver and Passenger with Vanity Mirror Light | Driver and Passenger with Vanity Mirror Light |
| Overhead Console with Map Lamps (X2) and Sunglasses Holder | - | - | Standard | Standard | Standard | Standard |
| Digital Clock | Standard | Standard | Standard | Standard | Standard | Standard |
| Cruise Control | - | - | Standard | Standard | Standard | Standard |
| Multi Information Display (MID) | - | - | Standard | Standard | Standard | Standard |
| Dashboard Illumination Control | Standard | Standard | Standard | Standard | Standard | Standard |
| Power socket, Auxiliary 12V IP Mounted | 1 | 1 | 1 | 1 | 1 | 1 |
| Cigarette Lighter | Standard | Standard | Standard | Standard | Standard | Standard |
| Glove Box, Lockable | Standard | Standard | Standard | Standard | Standard | Standard |
| Utility Box, on Glove Box | Standard | Standard | Standard, High Type | Standard, High Type | Standard, High Type | Standard, High Type |
| Steering Column Adjustment | Tilt and Telescopic | Tilt and Telescopic | Tilt and Telescopic | Tilt and Telescopic | Tilt and Telescopic | Tilt and Telescopic |
| Steering Wheel Trim | Urethane | Urethane | Leather | Leather | Leather | Leather |
| Steering Wheel Multi-Functional Controls | - | Audio Controls | Audio and Auto Cruise | Audio and Auto Cruise | Audio and Auto Cruise | Audio and Auto Cruise |
| Gear Shift Trim | Urethane | Urethane | Urethane | Urethane | Leather with Decorate | Leather with Decorate |
| Front Seat Configuration | 2 x Bucket | 2 x Bucket | 2 x Bucket | 2 x Bucket | 2 x Bucket | 2 x Bucket |
| Rear Seat Configuration | - | - | - | - | - | - |
| Seat Trim | Canvas | Cloth | Cloth | Cloth | Cloth | Cloth |
| Seat Adjustment | 4-Way Manual Driver | 6-Way Manual Driver | 6-Way Manual Driver | 6-Way Manual Driver | 6-Way Manual Driver, Manual Lumbar Support Driver | 6-Way Manual Driver, Manual Lumbar Support Driver |
| Storage Pockets behind Front Seats | - | - | Standard | Standard | Standard | Standard |
| Door Trim with Storage Pockets and Integrated Cupholders | Standard | Standard | Standard | Standard | Standard | Standard |
| Interior Door Release Handle | Black | Black | Silver | Silver | Chrome | Chrome |
| Interior Trim Colours | Pale Grey Upper / Black Lower | Pale Grey Upper / Black Lower | Pale Grey Upper / Black Lower | Pale Grey Upper / Black Lower | Pale Grey Upper / Black Lower | Pale Grey Upper / Black Lower |
| A-pillar Assist Grip, Driver and Passenger | Standard | Standard | Standard | Standard | Standard | Standard |
| Roof-Mounted Assist Grips | Passenger | Passenger | Driver and Passenger | Driver and Passenger | Driver and Passenger | Driver and Passenger |

| MODELS | D-MAX 1.9 Ddi HR 4X2 M/T | D-MAX 1.9 Ddi HR L 4X2 M/T | D-MAX 1.9 Ddi HR LS 4X2 M/T | D-MAX 1.9 Ddi HR LS 4X2 A/T | D-MAX 3.0 Ddi LSE 4X2 A/T | D-MAX 3.0 Ddi LSE 4X4 A/T |
|--|-----------------------------|---|---|---|---|---|
| INTERIOR FEATURES | | | | | | |
| Floor Trim | Vinyl with Tibia Pad | Carpet with Heel Pad and Tibia Pad | Carpet with Heel Pad and Tibia Pad | Carpet with Heel Pad and Tibia Pad | Carpet with Heel Pad and Tibia Pad | Carpet with Heel Pad and Tibia Pad |
| Floor Tunnel Console with Integrated Cupholder | Standard | Standard | Standard | Standard | Standard | Standard |
| Centre Console Storage Box with Lid | - | - | Standard | Standard | Standard with Soft Pad with Stitch | Standard with Soft Pad with Stitch |
| Driver Footrest | Standard | Standard | Standard | Standard | Standard | Standard |
| Rear Heater Duct | - | - | - | - | - | - |
| Storage Box | - | - | - | - | - | - |
| In-floor Storage | Standard | Standard | Standard | Standard | Standard | Standard |
| Window Operation | Manual Front | Power Front with Driver One Touch, Jam Protection and Timer | Power Front with Driver One Touch, Jam Protection and Timer | Power Front with Driver One Touch, Jam Protection and Timer | Power Front with Driver One Touch, Jam Protection and Timer | Power Front with Driver One Touch, Jam Protection and Timer |
| Rear Window | Fixed without Defogger | Fixed without Defogger | Fixed without Defogger | Fixed without Defogger | Fixed with Defogger | Fixed with Defogger |
| Fuel Flap Remote Opener | Standard | Standard | Standard | Standard | Standard | Standard |
| Ventilator Grille with Shutter (Fin Shut) | Standard | Standard | Standard | Standard | Standard | Standard |

| INFOTAINMENT | | | | | | |
|---|---|---|---|---|---|---|
| Audio System | AM/FM Radio, CD player, USB, Clock, Bluetooth - Audio Streaming and Handsfree Phone | AM/FM Radio, CD player, USB, Clock, Bluetooth - Audio Streaming and Handsfree Phone | AM/FM Radio, 7" Touch Screen, Bluetooth - Audio Streaming, Apple CarPlay and Android Auto, WiFi and Handsfree Phone | AM/FM Radio, 7" Touch Screen, Bluetooth - Audio Streaming, Apple CarPlay and Android Auto, WiFi and Handsfree Phone | AM/FM Radio, 9" Touch Screen, Bluetooth - Audio Streaming, Apple CarPlay and Android Auto, WiFi and Handsfree Phone | AM/FM Radio, 9" Touch Screen, Bluetooth - Audio Streaming, Apple CarPlay and Android Auto, WiFi and Handsfree Phone |
| USB Port (Music Playback and Device link) | Standard | Standard | Standard | Standard | Standard | Standard |
| Speakers | 2 | 4 | 6 | 6 | 6 | 6 |
| Antenna | Standard | Standard | Standard | Standard | Standard | Standard |

| OPTIONS | | | | | | |
|---|-----------|-----------|-----------|-----------|-----------|-----------|
| 17" Alloy Wheel | Available | Available | - | - | - | - |
| 18" Alloy Wheel & 265 / 60 R18 Tyre (All Terrain) | - | - | Available | Available | - | - |
| 18" Alloy Wheel & 265 / 60 R18 Tyre (H/T Terrain) | - | - | Available | Available | Available | Available |
| Differential Lock | Available | Available | Available | Available | - | - |
| Hub Cap Steel Wheel | - | - | - | - | - | - |
| Hub Cap Alloy Wheel | Available | Available | - | - | - | - |
| Spare Tyre Steel | - | - | - | - | - | - |
| Spare Tyre Alloy | - | - | Available | Available | - | - |
| Sports Bar, Black | - | Available | Available | Available | - | - |
| Sports Bar, Chrome | - | Available | Available | Available | - | - |
| Rear Sliding Window | Available | Available | Available | Available | Available | Available |
| Leather Seat with Manual Adjustment | - | - | Available | Available | Available | Available |

| WARRANTY / SERVICE INTERVALS | | | | | | |
|-------------------------------------|------------------------|------------------------|------------------------|------------------------|------------------------|------------------------|
| Warranty and Roadside Assistance | 5 Years / 120 000 km | 5 Years / 120 000 km | 5 Years / 120 000 km | 5 Years / 120 000 km | 5 Years / 120 000 km | 5 Years / 120 000 km |
| Anti-Corrosion Warranty | 5 Years / Unlimited km | 5 Years / Unlimited km | 5 Years / Unlimited km | 5 Years / Unlimited km | 5 Years / Unlimited km | 5 Years / Unlimited km |
| Service Plan | 5 Years / 90 000 km | 5 Years / 90 000 km | 5 Years / 90 000 km | 5 Years / 90 000 km | 5 Years / 90 000 km | 5 Years / 90 000 km |
| Service Intervals | 12 Months / 15 000 km | 12 Months / 15 000 km | 12 Months / 15 000 km | 12 Months / 15 000 km | 12 Months / 15 000 km | 12 Months / 15 000 km |

1 Fuel Economy and CO₂ data as per ECE R101 / SANS 20101 regulation. Note that the actual fuel consumption will depend on many factors, including the driver's driving habits, prevailing conditions and the vehicle's equipment, condition and use.

2 Towing capacity subject to South African Road Traffic Act. The weight of the towing vehicle including trailer towball load must not exceed the Gross Vehicle Mass (GVM). The combined weight of the fully loaded vehicle and trailer must not exceed the Gross Combination Mass (GCM). Maximum individual axle loads (GA1 and GA2) must not be exceeded (e.g.: if a 3.0L Diesel is towing 3,500kg, its maximum Vehicle mass is 2,500kg in order to be within GCM).

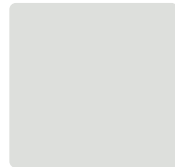


The display cluster is also linked to the infotainment system to reduce eye movement during driving and features second-row seatbelt reminders, allowing safety checks without the driver turning around.

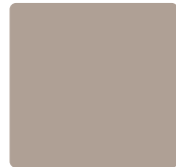


D-MAX STANDARD

Standard, L, LS & LSE trims are available in these stunning colours:



SUMMIT WHITE



PEPPER DUST



BLACK MEETS KETTLE



PULL ME OVER RED



SWITCHBLADE SILVER



BLUE ME AWAY



SON OF A GUN GREY

The D-MAX Standard trim level comes with generous levels of spec. Herewith a summary of the noteworthy specifications:

INTERIOR

Manual 4-Way Adjustable Canvas Bench Seat with Standard Occupant Cushion Pad & Integrated Headrest (Single Cab), 4-Way Manual Canvas Bucket Seat with Large Occupant Cushion Pad & Integrated Headrest (Extended Cab), **Tilt & Telescopic Steering**, Urethane Steering Wheel & Gear Shift Lever, Day/Night Inside Rear View Mirror, Driver & Passenger Sun Visor, Manual Aircon, Short Floor Console with Tray (Extended Cab), Vinyl Floor Trim, Manual Door Locks, 12V Power Outlet.

EXTERIOR

17" Steel Wheels, Dark Grey Radiator Grille, **Variable Intermittent Front Wiper**, Black Exterior Door Handles.

Black Outside Rear-View Mirror with Manual Adjust, Bulb Rear Combination Lamps, Black Front Bumper, Black Rear Bumper (Extended Cab), Fixed Rear Window without Defogger, Front & Rear Mudflaps.

TECH

AM/FM Radio (2DIN) with CD Player, Bluetooth®, USB with 2 Speakers, **Halogen Headlamps with Follow Me Home.**

SAFETY

Anti-Lock Braking System with Electronic Brake Force Distribution & Brake Assist, Brake Override Accelerator, Electronic Stability Control with Hill Start Assist, Hill Descent Control, Trailer Sway Control, Driver & Passenger Airbags, **Centre High Mounted Stop Lamp with Emergency Stop Signal**, Immobiliser, Lockable Glovebox.

PERFORMANCE

Available with a 1.9 Litre Turbo Diesel Engine mated with 6-Speed Manual Transmission, a 4X2 Drive Configuration and Hydraulic Power Steering.

D-MAX L

The D-MAX L trim level comes with the same features as the Standard level, but also includes the following additional specifications.

INTERIOR

Manual 6-Way Adjustable Cloth Seat with Integrated Headrest, Carpet Floor Trim with Heel Pad & Tibia Pad, Driver & Passenger Sun Visor with Passenger Vanity Mirror, Urethane Steering Wheel with Audio Controls, Power Windows with Driver Auto Up/Down, Jam Protection and Timer.

EXTERIOR

17" Steel Wheels, Black Outside Rear-View Mirror with Power Adjust, Full Centre Floor Console with Lid.

SAFETY

Anti-theft Alarm, ISOFIX Child Seat Anchorage with Top Tether, Power Door Lock with Remote Keyless Entry & Speed Sensing Door lock.

PERFORMANCE

Available with a 1.9 Litre Turbo Diesel Engine mated with 6-Speed Manual Transmission and 4X2 Drive Configuration.





Front Seats

Manual 6-Way Adjustable Cloth Seat



Front Seats

Manual 6-Way Adjustable Cloth Seat



Image shown is for trim-level reference only.

D-MAX LS

The D-MAX LS trim level comes with the same features as the L level, but also includes the following additional specifications:

INTERIOR

Leather Steering Wheel with Audio & Cruise Controls, Manual 6-Way Adjustable Cloth Seat with Separate Headrest, Overhead Console with Map Lamps and Sunglasses Holder.

EXTERIOR

17" Alloy Wheels, Halogen Front Fog Lamps, Halogen Headlamps with Manual Levelling, Halogen Daytime Running Lights, Body Colour Outside Rear-View Mirror with Power Adjust & Turn Signal, Body Colour Exterior Door Handles, Body Colour Front & Rear Bumpers, Medium Grey Metallic Radiator Grille, Black Side Steps.

TECH

7" Touchscreen, AM/FM Radio with Bluetooth®, USB, WiFi, 6 Speakers, Auto Cruise Control, Rear Park Assist and Rear View Camera.

SAFETY

Airbags: Driver, Passenger, Seat Side, Curtain & Driver Knee. Ultrasonic Alarm.

PERFORMANCE

Available with a 1.9 Litre Turbo Diesel Engine mated with 6-Speed Manual or 6-Speed Automatic Transmissions and 4X2 Drive Configuration.



Specifications in black have been added to the new D-MAX.

D-MAX LSE

The D-MAX LSE trim level comes with the same features as the LS level, but also includes the following additional specifications:

INTERIOR

Manual 6-Way Adjustable Cloth Seat with Separate Headrest & Manual Lumbar Support, Driver & Passenger Sun Visor with Illuminated Vanity Mirror, Leather Gear Shift Lever, Dual Zone Automatic Air Conditioner, Fixed Rear Window with Defogger, Full Centre Floor Console with Soft Pad Lid.

EXTERIOR

18" Alloy Wheels, LED Front Fog Lamps, LED Daytime Running Lights, LED Headlamps with Automatic Levelling, Auto On/Off, LED Tail Lamps with Rear Fog Lamps, Chrome Outside Rear-View Mirror with Power Adjust & Fold, Heated and with Turn Signal, Chrome Exterior Door Handles, Chrome Radiator Grille, 3.5T Tow Bar, Chrome Tubular Sports Bar.



Image shown is for trim-level reference only.

TECH

9" Touchscreen, AM/FM Radio, Bluetooth®, USB, WiFi, 6 Speakers, Auto Rain Sensing Wipers, Front & Rear Park Assist, Passive Entry Start System, Tyre Pressure Monitoring System (Inflation Detection).

IDAS SAFETY FEATURES

Blind Spot Monitor, Rear Cross Traffic Alert, Rear Radar.

PERFORMANCE

Available with a 3.0 Litre Turbo Diesel Engine mated with 6-Speed Automatic Transmission and 4X2 or 4X4 Drive Configurations, Differential Lock.



Image shown is for trim-level reference only.

Specifications in black have been added to the new D-MAX.

ALL-NEW ISUZU
D-MAX

BOLD IS PEACE OF MIND

WARRANTY & ROADSIDE ASSISTANCE: 5 Years / 120 000 km

ANTI-CORROSION WARRANTY: 5 Years / Unlimited km

SERVICE PLAN: 5 Years / 90 000 km with Service Intervals of 12 months / 15 000 km

ISUZU

COMPLETE CARE





24/7 CALL CENTRE: Toll free within South Africa and also available in neighbouring countries. **TOWING SERVICE OR TECHNICAL ASSISTANCE:** In the event of a vehicle breakdown, Isuzu will arrange for towing to the closest dealership for diagnosis and repairs. Where possible, roadside repair will be carried out, with the assistance of an Isuzu dealership or Roadside Assistance technician. **ACCOMMODATION OR RENTAL CAR:** Should you be stranded further than 100 km from your home or destination due to the breakdown or resulting repair work, a FREE rental car or FREE overnight accommodation will be provided. A fuel deposit (fully refundable on return of the vehicle with a full tank) is payable for rental cars supplied, while fuel and toll costs incurred during the rental are for your own account. **SAFETY AT ROADSIDE:** Should you feel unsafe, a security vehicle (depending on availability) will be dispatched for your protection. **OVERNIGHT STORAGE:** Will be provided for your vehicle if required. **REPATRIATION OF YOUR VEHICLE:** Upon completion of repairs, to your home or closest dealer, if further than 100 km from home. **FLAT TYRE ASSISTANCE:** In the event of a flat tyre, we offer assistance with the tyre change. **KEYS LOCKED IN:** Assistance provided here too. **FUEL ASSISTANCE:** You pay only for the fuel supplied. **COMMUNICATION OF URGENT MESSAGES:** Including assistance with directions, to family members. **INFORMATION SERVICES:** Explanation of vehicle warning systems, as well as location of closest dealer, filling station or where to get a new tyre.



South Africa is a beautiful and unique country, and exploring it takes more than just a vehicle and driver's licence. If you are considering purchasing a lifestyle vehicle, come and experience a day at our ISUZU DRIVING ACADEMY to assist in your selection.

We will teach you to conquer the extraordinary, the exciting and the hazardous.

- One-day 4X4 Off-Road
- Two-day Advanced 4X4 Off-Road
- Defensive Advanced On-Road
- Truck Training
- Corporate, Team Building and Year-end Events

www.isuzu.co.za    

ISUZU

With you, for the long run

Disclaimer: The information contained in this document was accurate at the time of going to print April 2022. Specifications and equipment are subject to change without prior notice. Some illustrations in this document feature special equipment that is not included in standard delivery, and can be purchased at an additional cost. Vehicles may differ from images shown. Printed colours may vary from actual. Errors and omissions excepted. Terms and conditions apply. Please contact your ISUZU retailer for exact information.