

allegro bus



4



TIFFIN MOTORHOMES
WHEREVER YOU GO, WE GO.



COCKPIT



SOFA/SLEEPER



KITCHEN



JUST AS THERE'S NO PLACE LIKE HOME, there's no motor home quite like the luxurious 2013 Allegro Bus, the model favored by Tiffin customers who live full-time on the road. Take a look and you'll see why. With seven-foot ceilings and floor plans up to 43 feet, there's plenty of space for everything and everybody, with elbowroom to spare. You'll be impressed by all the storage, too, courtesy of abundant built-in handcrafted cabinetry throughout the coach to keep living areas organized and clutter-free. Underneath, a full pass-through basement provides up to an additional 180 cubic feet of space. Safety is maximized on this steel-structured vehicle, built on our PowerGlide® chassis, powered by a 450-horsepower Cummins engine, equipped with two-stage compression brakes and four to six air bags. You'll also appreciate the Bus's double-paned windows, unique to Tiffin motor homes, which ensure a quiet ride and a better night's sleep.



TV/CHEST OF DRAWERS



MASTER BEDROOM



BATHROOM



COVER

2013 ALLEGRO BUS WITH RUSTIC CANYON EXTERIOR

LIVING AREA

43 QGP FLOOR PLAN/AMBROSIA FABRIC SUITE WITH GLAZED HONEY CABINETS

INTERIOR DÉCOR

The 2013 Allegro Bus gives you so many ways to make your living space uniquely yours. Spacious interiors offer plenty of room to add your own special decorative touches, complemented by fabrics and finishes created especially for the Allegro Bus. Take a look at the options. You're sure to find exactly what you need for your home sweet motor home.

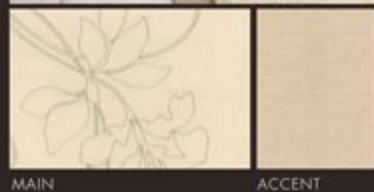
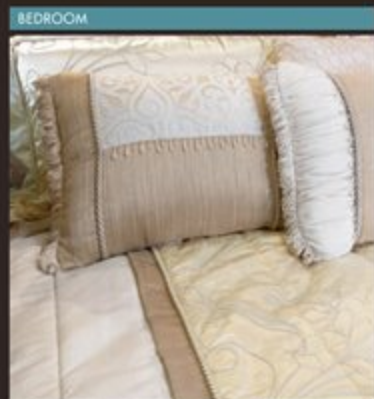
CABINETS



FLOORING

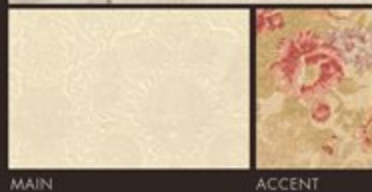
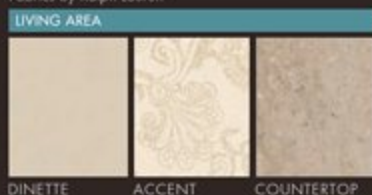


AMBROSIA FABRIC SUITE



CLASSIC MANOR FABRIC SUITE

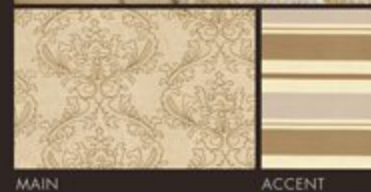
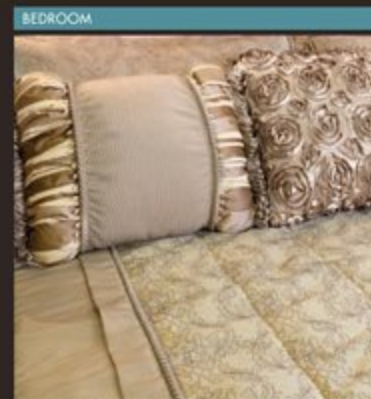
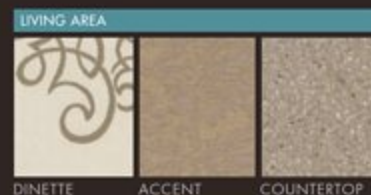
Fabrics by Ralph Lauren®



DRIFTWOOD FABRIC SUITE



MILAN FABRIC SUITE



*Available only with Glazed Cherry, Glazed Honey, or Driftwood finishes.

Allegro Bus cabinet doors & fascias are made of solid wood, & all cabinet finishes are available in combination with any fabric suite. All options may not be available in every model. Because of progressive improvements, specifications, standard & optional equipment are subject to change without notice or obligation. For a complete & up-to-date list of available options & specifications, visit tiffinmotorhomes.com

FLOOR PLANS

36 QSP



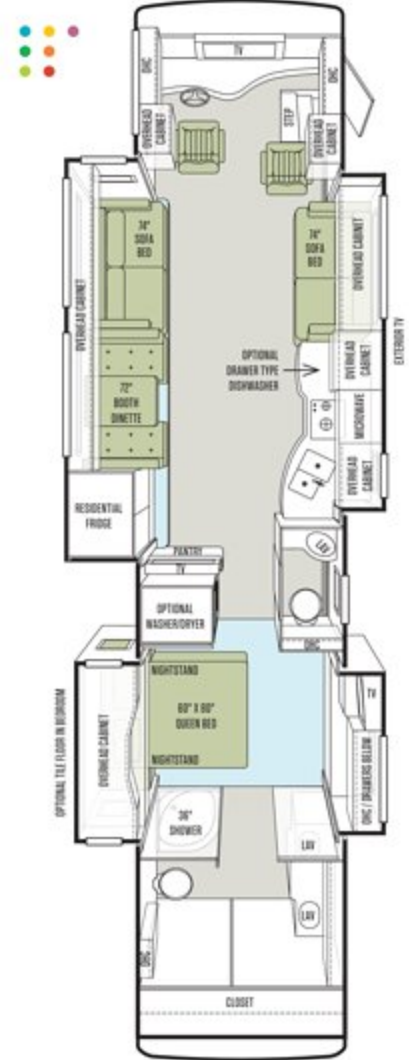
40 QBP



40 QXP



43 QGP



AVAILABLE OPTIONS



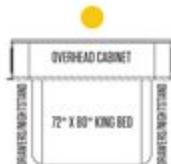
FREESTANDING DINETTE WITH COMPUTER WORKSTATION



FREESTANDING CABINET/DINETTE



U-SHAPED BOOTH DINETTE



OVERHEAD CABINET
72" X 80" KING BED



ENTERTAINMENT CENTER WITH ONE LEATHER LIFT RECLINER & FLIP TABLE



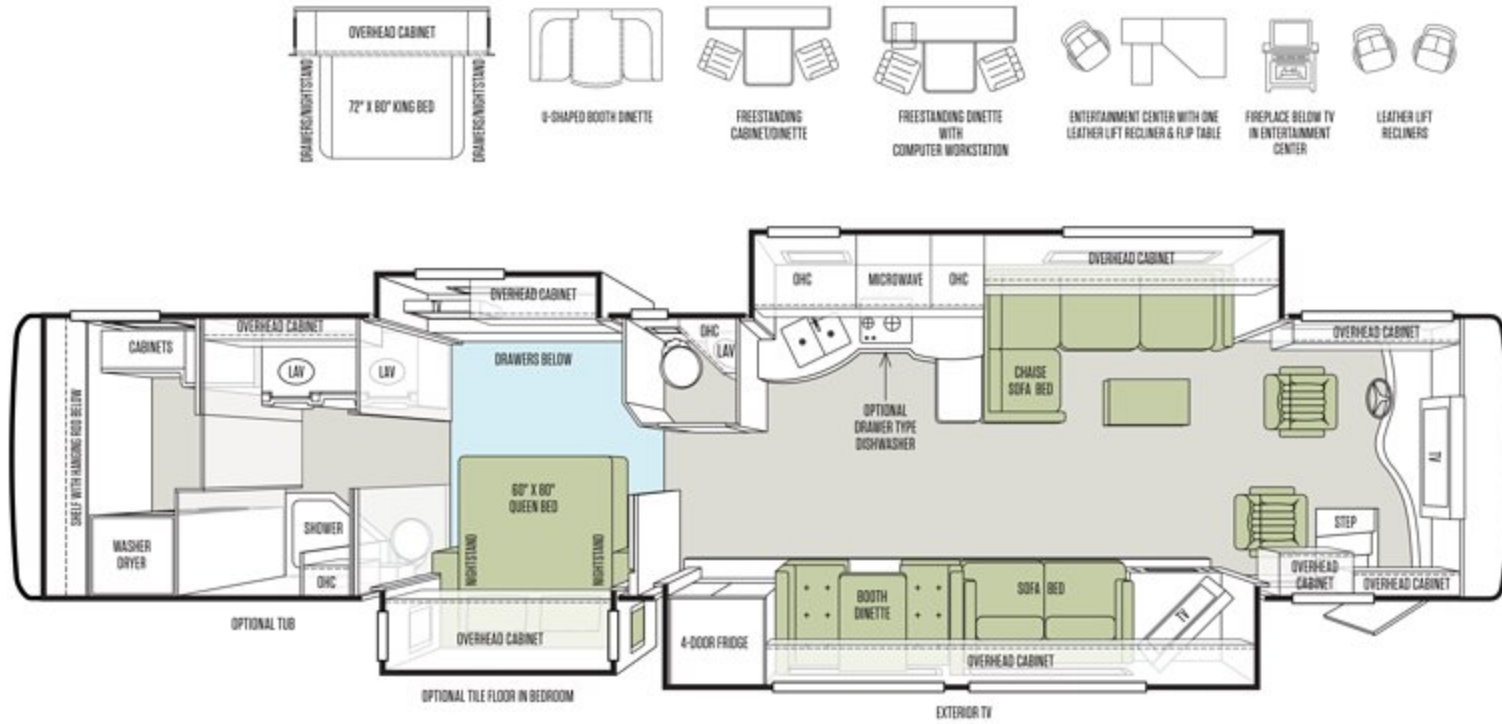
LEATHER LIFT RECLINERS



FIREPLACE BELOW TV IN ENTERTAINMENT CENTER

NEW FLOOR PLAN

45 LP



SPECIFICATIONS

AUTOMOTIVE

STANDARD ON ALL MODELS:

- Allison 3000 MH 6-speed Automatic Transmission with Lock-up (Torque Converter)
- Side Mounted Radiator
- ABS Brakes & Two-stage Compression Engine Brake
- Aluminum Wheels
- Air Bogs: 4 on 36' & 40'; 6 on 43'
- Cruise Control
- VIP Smart Wheel
- Fog Lights
- Emergency Start Switch
- Adjustable Gas & Brake Pedals
- Independent Front Suspension

CHASSIS OPTIONS

POWERGLIDE® CHASSIS:	36 QSP	40 QBP	40 QXP	43 QGP	45 LP
Cummins ISL 450 HP/1250 lb. Torque	\$	\$	\$	\$	\$
GVWR	37,600 lb.	37,600 lb.	37,600 lb.	50,900 lb.	51,300 lb.
GAWR – Front	15,600 lb.	15,600 lb.	15,600 lb.	15,600 lb.	16,000 lb.
GAWR – Rear	22,000 lb.	22,000 lb.	22,000 lb.	22,000 lb.	22,000 lb.
GAWR – Tag Axle	NA	NA	NA	13,300 lb.	13,300 lb.
GCWR	47,600 lb.	47,600 lb.	47,600 lb.	60,900 lb.	61,300 lb.
Alternator Amps	170	170	170	170	170
Trailer Hitch Capacity	10,000 lb.	10,000 lb.	10,000 lb.	10,000 lb.	10,000 lb.
Fuel Tank (Gallons) – Dual Fuel Fill	150	150	150	150	150
DEF Tank* (Gallons)	15	15	15	15	15

WEIGHTS & MEASURES

OVERALL:	36 QSP	40 QBP	40 QXP	43 QGP	45 LP
Overall Length (Approximate)	36' 11"	40' 4"	40' 4"	43' 6"	44' 10"
Overall Height with Roof Air (Maximum)	12' 7"	12' 7"	12' 7"	12' 7"	12' 7"
Interior Height	84"	84"	84"	84"	84"
Overall Width	101"	101"	101"	101"	101"
Interior Width	96"	96"	96"	96"	96"
Fresh Water (Gallons)	90	90	90	90	90
Black Water (Gallons)	50	50	50	50	50
Grey Water (Gallons)	70	70	70	70	70
LPG Tank (Gallons; can only be filled to 80% capacity)	35	35	35	24	24.4
Basement Storage (Cubic Feet – Approximate)	122	177	177	180	175
Wheel Base	238"	276"	276"	318"	326"
Tire Size	295/80R	295/80R	295/80R	295/80R	Front: 315/80R Rear: 295/80R
Minimum Garage Height	13'	13'	13'	13'	13'

COCKPIT

STANDARD ON ALL MODELS:

- Front Overhead TV
- 12 V Disconnect Switch
- Driver Side Power Window
- Integrated Seatbelt Brackets
- Power Ultra Leather Driver & Passenger Seats with Passenger Power Footrest
- Passenger Seat Console Box with Built-in Magazine Rack
- Color Rear Vision Monitor System with Side-view Cameras Activated by Turn Signals
- Contemporary Wraparound Dash
- 12 V/110 V Phone Jack Receptacle
- Power Solar/Privacy Windshield Shade
- CD Player & AM/FM Stereo
- Computer Drawer on Passenger Side with Lock-out Rails
- Cupholders on Driver & Passenger Side
- Two Wooden Dash Drawers
- Drawer in Step Well
- Lighted Switches
- Dual Dash Fans
- Fire Extinguisher
- Beverage Tray

AVAILABLE OPTIONS ON ALL MODELS:

- Satellite-ready Radio (Requires Subscription)
- In-dash Stereo/Navigation System
- Rearview Mirror with Compass & Outside Temperature

*Diesel Exhaust Fluid (DEF) is the active component used in Selective Catalytic Reduction (SCR) engines to reduce nitrogen oxide emissions by 90% to meet EPA standards.



GENERAL EXTERIOR

STANDARD ON ALL MODELS:

- Fiberglass Front & Rear Caps
- Dual Fuel Fills
- BASF Full-body Paint with Protective Film on Front Cap
- Large Tinted One-piece Windshield
- Heated Chrome Power Mirrors with Remote Adjustments
- Single Motor Intermitent Wipers
- Undercoating
- Deadbolt Front Entrance Door
- Keyless Entry Door System & Keyless Component Door Locks
- Exterior TV with Sound Bar
- Hydraulic Automatic Leveling Jacks
- Dual Pane Tinted Windows
- Automatic Door & Patio Awnings
- Window Awning Package
- Slide-out Awnings with Metal-wrapped Covers
- Pass-thru Basement Storage
- Lockable Swing-out Exterior Storage Doors with Gas Shocks
- Heated Water & Holding Tank Compartments
- Auto Generator Start
- Tank Monitor Pad Located at Dump Station
- SeeLevel Tank Monitor
- Six House Batteries
- Custom Mud Flap
- 50 Amp Service
- Power Cord Reel – 50 Amp
- Park Telephone & Cable Ready
- Black Holding Tank Flush System
- 110 V Exterior Receptacle
- Water Filter
- Gravity Water Fill
- Docking Lights
- Spotlight with Remote
- Exterior Rinse Hose with Soap Dispenser & Paper Towel Holder
- Concealed Air Horn
- Digital TV Antenna
- Roof Ladder
- Quiet AC Roof-ducted System
- Luggage Compartment Lights
- Pure Sine Wave Inverter
- Low Profile In-motion Satellite Dish

NOTE: High-definition programming is not available on a domed satellite antenna unless you subscribe to DISH Network®

AVAILABLE OPTIONS:	36 QSP	40 QBP	40 QXP	43 QGP	45 LP
One Storage Compartment Slide-out Tray	O	O	O	O	O
Two Storage Compartment Slide-out Trays	NA	O	O	O	O
Onan® 8,000 kw Generator with Two Low Profile Roof Air Conditioners with Heat Pumps	S	S	S	NA	NA
Onan® 10,000 kw Generator with Three Low Profile Roof Air Conditioners with Heat Pumps	NA	O	O	S	S
Paramount Awning with Concealed Roof ACs & Antenna	NA	O	O	O	O
Two Paramount Awnings with Concealed Roof ACs & Antenna	NA	NA	NA	O	O
125 Watt Solar Panel	O	O	O	O	O
Pre-wired for Winegard Trav'ler Satellite	O	O	O	O	O
Basement Freezer/Refrigerator (Available Only with All Electric Option)	O	O	O	O	O

GENERAL INTERIOR

STANDARD ON ALL MODELS:

- 7' Ceilings with LED Bullet Lights
- Soft Touch Vinyl Ceilings
- High Glass Raised Panel Hardwood Cabinet Doors
- Automatic Step Well Cover
- Washer/Dryer Ready
- SeeLevel Tank Monitor
- Carbon Monoxide, LP & Smoke Detectors
- Central Vacuum Cleaner with VacPan
- Wardrobe with Automatic Light
- Multiplex Lighting System
- Porcelain Tile Flooring in Kitchen, Bath, Entrance Landing & Living Room
- Complete Cable Wiring Interfacing with Surround Sound & Satellite Receiver
- Enclosed Surround Sound Speakers
- Energy Management System
- Power Solar/Privacy Shades in Living Room
- In-motion Low Profile Satellite Dish (No Receiver)

AVAILABLE OPTIONS:	36 QSP	40 QBP	40 QXP	43 QGP	45 LP
Combo Washer/Dryer with Overhead Storage Area	O	O	O	O	O
Stacked Washer/Dryer	O	O	O	O	O
10-gallon DSI Gas/Electric Water Heater	S	S	S	NA	NA
Two Ducted Furnaces	S	S	S	NA	NA
All Electric Coach with Induction 2-burner Cooktop	O	O	O	O	O
TV in Entertainment Center	S	S	S	S	S
Hydronic Heating System (Required on All Electric Coach)	O	O	O	S	S
Tankless Gas Water Heater (NA with All Electric Coach)	O	O	O	NA	NA
Security Safe	O	O	O	O	O

BATH

STANDARD ON ALL MODELS:

- Medicine Cabinet with Vanity Lights
- Solid Surface Vanity Top & Bowl
- Skylight in Shower with Sliding Cover
- 3-speed Fantastic® Fan
- Electric Flush Toilet

AVAILABLE OPTIONS:	36 QSP	40 QBP	40 QXP	43 QGP	45 LP
41" Molded Fiberglass Shower	S	NA	NA	NA	NA
36" Molded Fiberglass Shower with Radius Door	NA	S	S	S	S
39" Tub in Place of Shower	NA	NA	NA	NA	O



BEDROOM

STANDARD ON ALL MODELS:

- Innerspring Queen Mattress (60" x 80")
- Bed Comforter with Throw Pillows
- Ceiling Fan
- TV Pre-wired for DVD & Satellite Receiver
- Solid Surface Nightstand Tops
- Solar/Privacy Shades
- Laundry Hamper

AVAILABLE OPTIONS:	36 QSP	40 QBP	40 QXP	43 QGP	45 LP
King Bed Mattress (72" x 80")	NA	O	O	O	O
Dual Control Air Comfort Mattress – Queen (60" x 80")	O	O	O	O	O
Dual Control Air Comfort Mattress – King (72" x 80")	NA	O	O	O	O
Memory Foam Queen Mattress (60" x 80")	O	O	O	O	O
Memory Foam King Mattress (72" x 80")	NA	O	O	O	O
Tile Flooring in Bedroom	O	NA	NA	O	O

KITCHEN

STANDARD ON ALL MODELS:

- Polished Solid Surface Countertops with Sink & Stove Covers
- Expand-an-island
- 2 1/2" Deep Lighted Toe Kick
- Single Lever Sink Faucet with Built-in Sprayer
- LED Light Above Counterop
- Stainless Steel Residential Refrigerator with Ice & Water Dispenser in Door
- Galley Soap Dispenser
- Stainless Steel Convection Microwave with Exterior Venting
- 2-burner Glass Cooktop

AVAILABLE OPTIONS:	36 QSP	40 QBP	40 QXP	43 QGP	45 LP
3-burner Cooktop with Gas Oven (NA with Dishwasher)	O	O	O	O	O
Dishwasher (Drawer Type)	O	O	O	O	O
Residential Double Bowl Stainless Steel Sink	S	NA	NA	NA	NA
Integrated Solid Surface Sink	NA	S	S	S	S
Gas/Electric Refrigerator (4 Batteries; NA with All Electric Coach)	O	O	O	O	O

LIVING AREA/DINETTE

STANDARD ON ALL MODELS:

- Ultra Leather DE Sofa/Sleeper on Passenger Side
- 12 V Receptacle at Dinette
- Full Porcelain Tile Flooring in Living Room & Bath
- Booth Dinette with Solid Surface Table

AVAILABLE OPTIONS:	36 QSP	40 QBP	40 QXP	43 QGP	45 LP
Freestanding Dinette with Computer Workstation	O	O	O	O	O
Freestanding Dinette with Built-in Cabinets	O	O	O	O	O
U-Shaped Dinette – Ultra Leather – on Passenger Side	NA	NA	NA	NA	S
U-Shaped Dinette – Cloth – on Passenger Side	NA	NA	NA	NA	O
Cloth DE Sofa/Sleeper on Driver Side	S	S	S	S	NA
Cloth DE Sofa/Sleeper on Passenger Side	O	O	O	O	O
Ultra Leather Air Coil Hide-A-Bed Sofa/Sleeper on Passenger Side	NA	O	O	O	NA
Cloth Air Coil Hide-A-Bed Sofa/Sleeper on Passenger Side	NA	O	O	O	NA
Ultra Leather DE Sofa/Sleeper on Driver Side	O	O	O	O	NA
Cloth DE Sofa/Sleeper on Driver Side	O	O	O	O	NA
Ultra Leather Air Coil Hide-A-Bed Sofa/Sleeper on Driver Side	O	NA	NA	NA	NA
Cloth Air Coil Hide-A-Bed Sofa/Sleeper on Driver Side	O	NA	NA	NA	NA
Ultra Leather Magic Bed on Driver Side	O	O	O	O	NA
Cloth Magic Bed on Driver Side	O	O	O	O	NA
Combo Sofa/Booth Dinette – Cloth – on Driver Side	O	O	O	O	NA
Combo Sofa/Booth Dinette – Ultra Leather – on Driver Side	O	O	O	O	NA
Ultra Leather Chaise L-Shaped Air Coil Sofa/Sleeper on Driver Side	NA	NA	NA	NA	S
Cloth Chaise L-Shaped Air Coil Sofa/Sleeper on Driver Side	NA	NA	NA	NA	O
Two Leather Lift Recliners on Driver Side	O	O	O	O	NA
Two Leather Lift Recliners on Passenger Side	NA	NA	NA	NA	O
Entertainment Center with One Leather Lift Recliner & Flip Table on Driver Side	NA	O	O	O	NA
Entertainment Center with One Leather Recliner & Flip Table on Passenger Side	NA	NA	NA	NA	O
Fireplace Below TV	NA	O	O	O	O

EXTERIOR DÉCOR

FULL-BODY PAINT SCHEMES



GOLD CORAL



RUSTIC CANYON



MAROON CORAL



SILVER SAND



ROCKY MOUNTAIN BROWN



SUNLIT SAND

WHY BUY A TIFFIN MOTORHOME?

No one invests more time and effort into the construction and engineering of motor homes than we do at Tiffin. To ensure superior quality, we design and make many parts ourselves, such as our roof cap, one piece of moisture-resistant molded fiberglass that prevents water intrusion and seamlessly seals a 5½" layer of formed insulation. Outside wall panels are gel-coated fiberglass over high performance thermal insulation. Underfoot, the porcelain tile floor is bonded to high-impact oriented strand board, which is secured atop thermal insulation and a woven moisture barrier material. Underneath it all, every model is built on an innerframe of durable, tubular aluminum. As a new coach comes off the line, we think the result speaks for itself: There isn't a more comfortable, better-built motor home on the road today.

10-YEAR LIMITED FRAME WARRANTY

We warranty the frame of the walls, floors, and roof for 10 years.

5-YEAR LIMITED SIDEWALL BOND WARRANTY

We warranty the sidewall against delamination between the outside fiberglass and the innerframe for 5 years.

GO TO TIFFINMOTORHOMES.COM

Visit us on the web for more information on the 2013 Allegro Bus and all 2013 Tiffin Motorhomes, along with the latest product and specification updates. Plus, watch videos and see other exclusive web content. You can also join us on Facebook and Twitter.

FOR PARTS & SERVICE CALL 256/356.0261

FACEBOOK.COM/TIFFINMOTORHOMES TWITTER.COM/TIFFINMOTORHOME

YOUR LOCAL TIFFIN DEALER:



Over the years, my family and I have had the pleasure of meeting many of our wonderful Tiffin customers. They're truly among the nicest folks in the world. So, if you're thinking about buying a Tiffin, don't be shy about asking our owners to tell you about their experiences. After all, no one knows our coaches better than the people who drive them. Of course, we'd love the chance to chat with you, too, so give us a call, visit our website, or just stop by the office if you're ever in Red Bay.

Safe travels!



TIFFIN MOTORHOMES

WHEREVER YOU GO, WE GO.

105 2ND STREET NW, RED BAY, ALABAMA 35582
CALL 256/356.8661 FAX 256/356.8219