

# Pro Neon M2 Max



## Install Guide



### What's included



Device dimensions 4" x 3.13" x 1.13"

### What's not included

- Mounting screws
- Zip ties
- Double-sided mounting tape
- Magnetic mounting plate



### Battery change

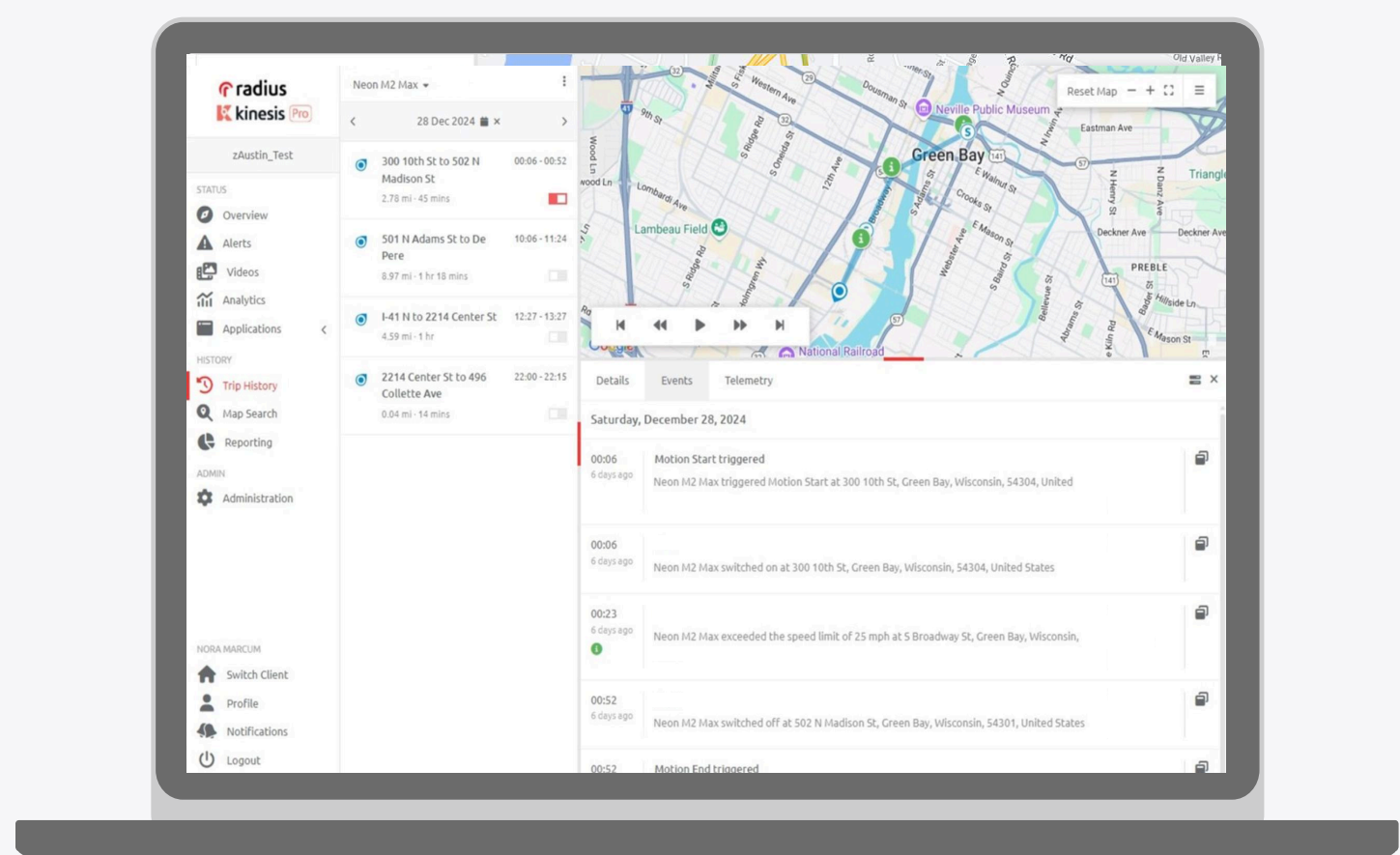
When the batteries need to be replaced, open the case using a T6 Torx screwdriver to remove the screws on the back of the device. It is recommended to use 3 AA lithium batteries.



### How it works




When the Neon M2 Max is powered on, the device will check into the platform.

- ✓ Default ping rate is once per day.
- ✓ Custom ping rate is available upon request.
- ✓ Ping on demand is available anytime from the platform.



# Step 1 - Check device status

- A. The device is shipped ready to be used. Short press the button to check connection status using the table below.
- B. Once the device is in the desired status, proceed to Step 2.

Led Status	Description
3 second green flash 	Connected to cellular network
3 second yellow flash 	<b>Backed off/not connected to cellular network</b> *Once back in good cellular coverage, reset the device by holding the button for 20 seconds to return to regular communication or wait up to 4 hours for the device to return to regular communication itself
3 second red flash 	<b>Offline/not connected to cellular network</b> Press and hold the button between 5-15 seconds and release
No LED status	<b>Device is not receiving power</b> Ensure that the device's batteries are seated correctly in their terminals and the coils are not warped/ rusted, then replace with new batteries

**NOTE:** To turn on the device, press the button for 5-15 seconds until the LED light turns green. To turn off the device, press the button for 5-15 seconds until the LED light turns red.

# Step 2 - Install the device

- A. Find an inconspicuous location away from metal and place the device with the blank side (no labels) facing toward the sky. Do not install in an engine compartment, underneath a vehicle or anywhere completely shielded by metal.
- B. Use double-sided mounting tape, screws or zip ties to secure in place, if needed.

**NOTE:** In an automobile, locations for the best signal strength are:  
glove box - center console - lower side of rear window - door storage compartment - side storage in trunk