

Install Guide



What's included



Device dimensions 2.8" x 1.7" x 1"

NOTE: Optional mounting tape not included.

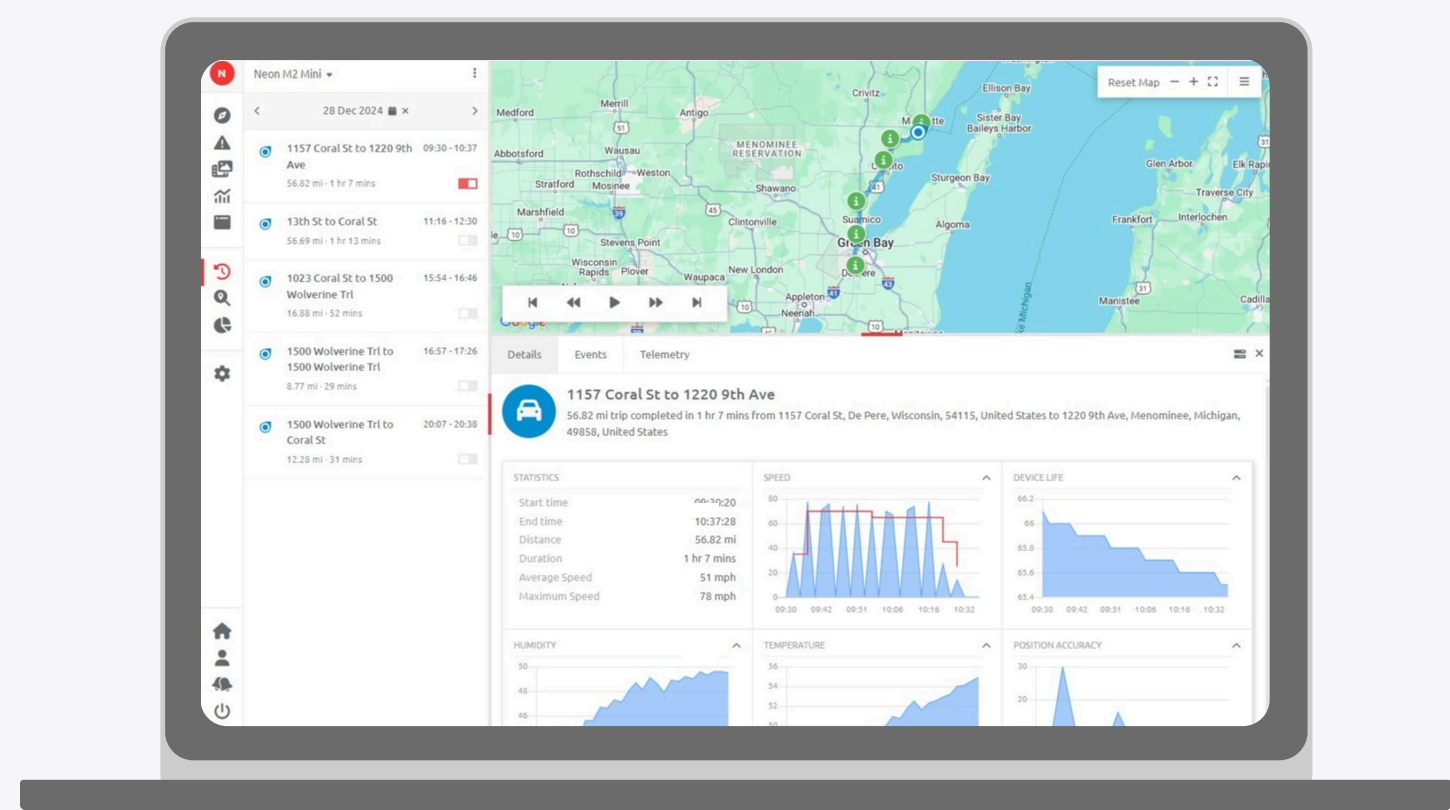
Battery change

When the batteries need to be replaced, pop open the case using a flathead screwdriver and insert new batteries into the opening found at the top of the device. It is recommended to use 3 AAA lithium batteries.

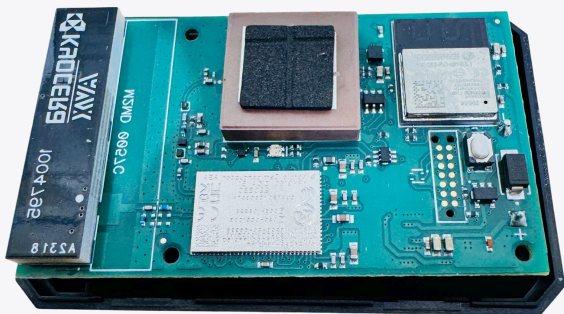
How it works

When the Neon M2 Mini is powered on, the device will check into the platform.

- ✓ Default ping rate is once per day.
- ✓ Custom ping rate is available upon request.
- ✓ Ping on demand is available anytime from the platform.






Step 1 - Check device status



A. The device may be shipped in airplane mode. Open the case using a coin or flathead screwdriver to access the button, which can be found near the middle bottom of the circuit board.

B. Short press the button to check connection status using the table below.

Led Status	Description
3 second green flash 	Connected to cellular network
3 second yellow flash 	Backed off/not connected to cellular network *Once back in good cellular coverage, reset the device by holding the button for 20 seconds to return to regular communication or wait up to 4 hours for the device to return to regular communication itself
3 second red flash 	Offline/not connected to cellular network Press and hold the button between 5-15 seconds and release
No LED status	Device is not receiving power Ensure that the device's batteries are seated correctly in their terminals and the coils are not warped/rusted, then replace with new batteries

NOTE: To turn on the device, press the button for 5-15 seconds until the LED light turns green. To turn off the device, press the button for 5-15 seconds until the LED light turns red.

C. Once the device is in the desired status, proceed to Step 2.

Step 2 - Install the device

A. Find an inconspicuous location away from metal and place the device with the blank side (no labels) facing toward the sky. Do not install in an engine compartment, underneath a vehicle or anywhere completely shielded by metal.

B. Use double-sided mounting tape to secure in place, if needed.

NOTE: In an automobile, locations for the best signal strength are:
glove box - center console - lower side of rear window - door storage compartment - side storage in trunk