

Fleet Neon 4950



Install Guide



What's included

Solar tracker
5.12" x 3.78" x 1.63"



Mounting bracket



Magnet



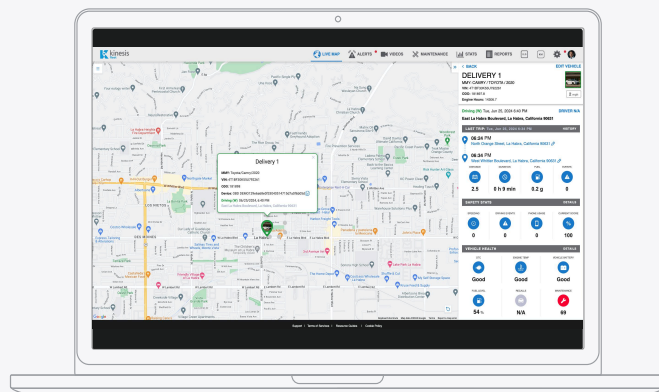
NOTE: An optional wiring kit can be purchased to hardwire to power.



How it works

When the asset is **in motion**, a ping will be received from the device every 30 minutes. When the asset is **not in motion**, the device will check in every 12 hours.

When the device is hardwired and in motion, a ping will send every one minute. The most recent location will be displayed within the driver portal and application.



Fleet Neon 4950



Install Guide



How to install

Your solar powered asset tracker will arrive powered off and will need to be awakened prior to install to allow it to track. You will use the power magnet that was included in your shipment to do so. To do this, simply hover the magnet on the top right corner of the solar panel for 10 seconds. A blue light will appear, indicating that the device is on. You can follow this same process to turn off the device; a red light will indicate that the device is powered off.

To check the power status of your asset tracker, you can hover the magnet for 1 second to check the light indicator.



Blue=On



Red=Off

You can attach the mount to your asset with screws or by utilizing strong two-sided Velcro. Please be sure that the tracker will have access to the sun for charging. Once mounted, simply clip the tracker into the mount. Please keep your magnet for future use should the need arise to power on or off the tracker.

Accessing Kinesis Fleet



Visit www.kinesisapp.com to access the application online.



Download the Kinesis Fleet application to your mobile device from iTunes or Google Play. Enter your email or cell phone number and click continue on the web or mobile app. The app will send a 2FA code to your email or phone number. Enter this code and log in to the app.