



DISASTER PREPAREDNESS

Phase I (Pre-Disaster)

Webinar Series

July 10, 2025



Meet Our Panelists



Kenneth Zaydel
Fire Chief, Social Circle



Hayden Hancock
City Manager, Nashville



LaTashae Walker
GEMA Public Assistance Manager



Regular Updates

Points of Contact (POCs)



Importance of Updated Points of Contact



Local Points of Contact

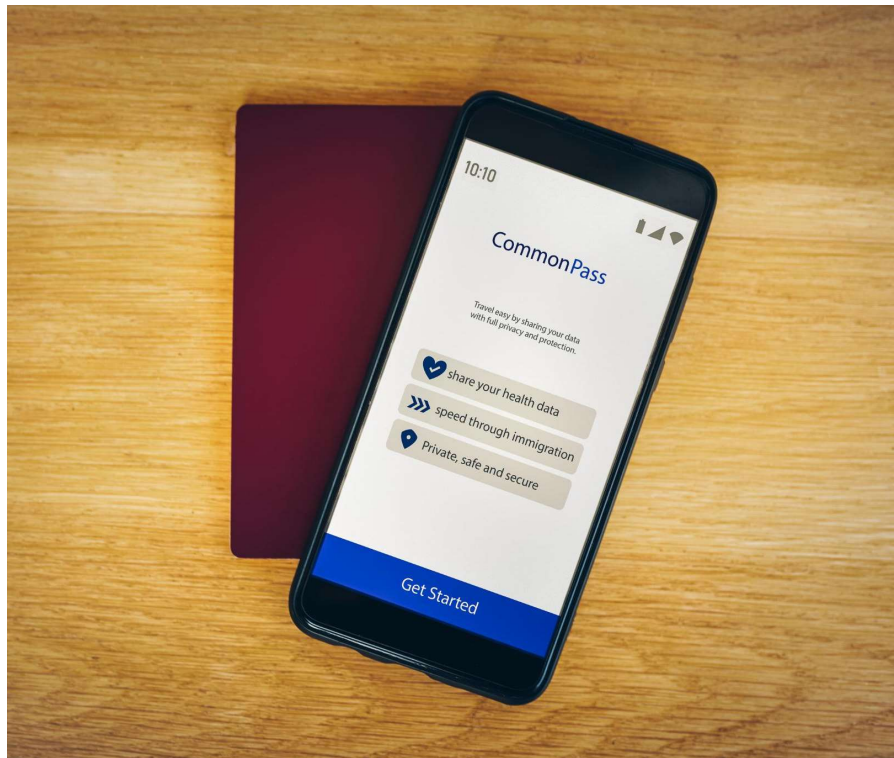
Staff, Business Owners, Schools, Hospitals, Health Department, Other Local Agencies



Agencies that Can Assist

GEMA, FEMA, Red Cross, United Way

Updating POCs on the City's Website for GEMA



Importance of Accurate POC Information
Accurate Point of Contact (POC) information is essential for effective communication during emergencies managed by GEMA.

Website Updates for Accessibility
Regular updates on the city's website make critical contact information readily accessible to all stakeholders in emergencies.

Stakeholder Engagement
Ensuring stakeholders have access to updated POC information fosters better coordination during emergency situations.

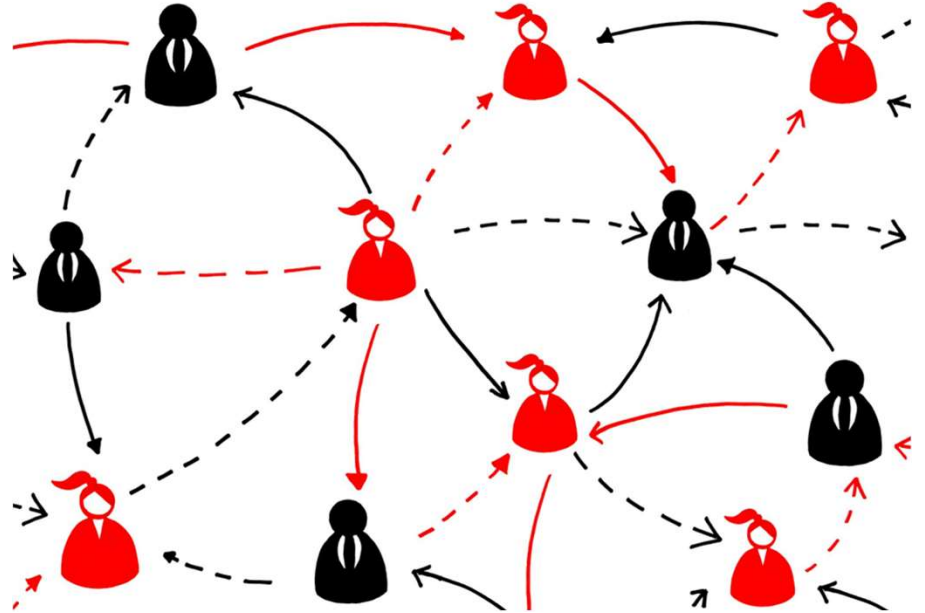
Ensuring the County Has Updated POCs for Coordination with GEMA

Importance of Updated POCs

Maintaining updated Points of Contact (POCs) is essential for efficient communication and coordination within the county and with GEMA.

Seamless Coordination

Updated POCs facilitate seamless coordination, ensuring all parties are informed and ready to respond effectively. Consider a group email to ensure all staff is kept in the loop on communications.



Designating POCs for Preliminary Damage Assessment (PDA) and Communications

Importance of POCs

Designating specific Points of Contact (POCs) ensures effective coordination and swift response during damage assessments.

Clear Communication Channels

Establishing clear communication channels is crucial for efficient information flow during and after incidents.

Swift Recovery Efforts

Effective designation of POCs and communication strategies accelerates recovery efforts post-incident.

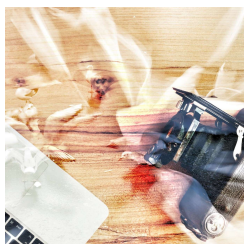




Creating a Comprehensive Contact List of Agencies

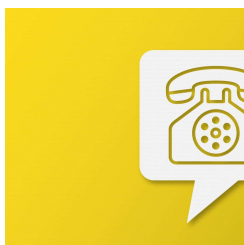


Listing State Agencies with Contact Information and Services



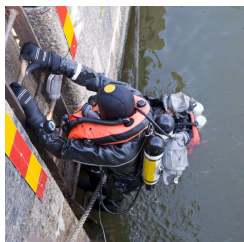
Importance of State Agencies

State agencies play a crucial role in disaster management by providing essential services and resources during emergencies.



Access to Contact Information

Having up-to-date contact information for state agencies allows local authorities to reach out quickly for assistance.



Service Availability

Listing the services provided by each agency helps local authorities understand available resources during a disaster.

Listing Federal Agencies with Contact Information and Services

Importance of Federal Agencies

Federal agencies provide vital support and expertise in disaster response efforts, complementing the role of state agencies.

Contact Information Accessibility

Having easily accessible contact information for federal agencies ensures local officials can quickly seek assistance when needed.

Collaboration During Emergencies

Strong collaboration between federal and local agencies enhances disaster preparedness and response capabilities.

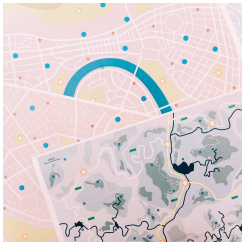


Listing Local Agencies with Contact Information and Services



Role in Disaster Management

Local agencies are vital in coordinating response efforts during disasters, ensuring resources are effectively mobilized.



Resource Mobilization

A comprehensive list of local agencies enables quick access to vital resources when immediate action is required.



Community Support

Local agencies provide essential support services to the community, making them integral during times of crisis.

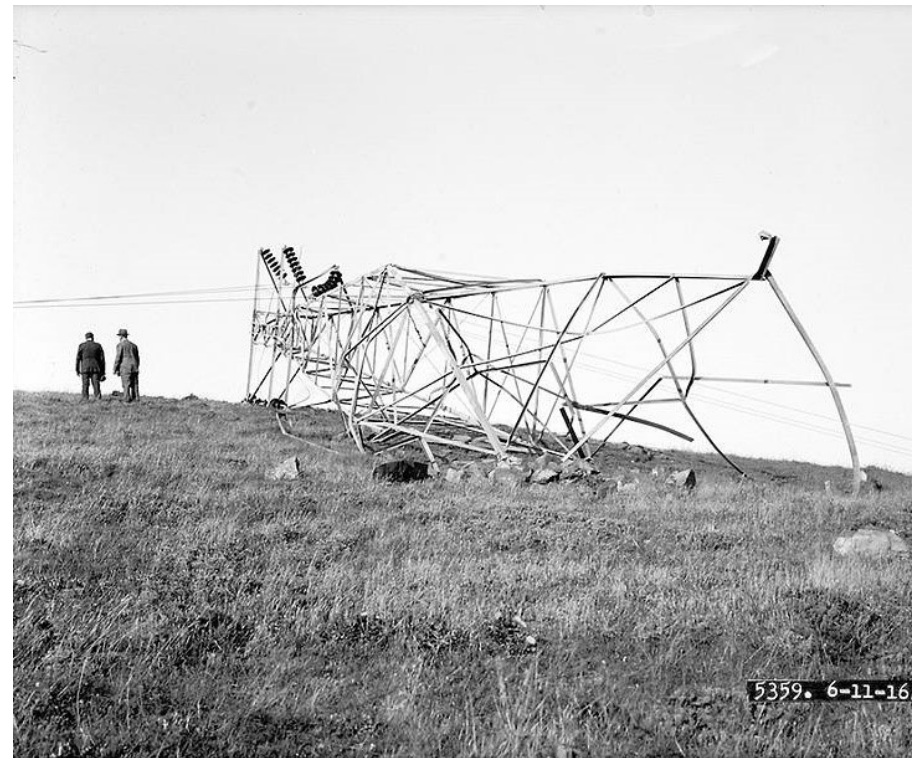
An aerial photograph of a city at dusk, with a blue overlay. The city features various buildings, including a prominent church with a tall steeple on the left and a modern building on the right. The text "Establishing Various Communication Methods" is centered over the image.

Establishing Various Communication Methods



What Happens When Communications Go Down?

- Establish Multiple Communication Methods
- Create and Disseminate Emergency Communication Protocols
- Coordinate with Partners
- Establish and Publicize Alternative Public Notification Methods
- Stockpile and Maintain Emergency Communication Equipment
- Conduct Training and Drills
- Leverage Technology Ahead of Time





Accurate Listing and --- Authorization of Roads



Determining Responsibility for Road Damage Recovery or Repairs

Importance of Clear Responsibilities

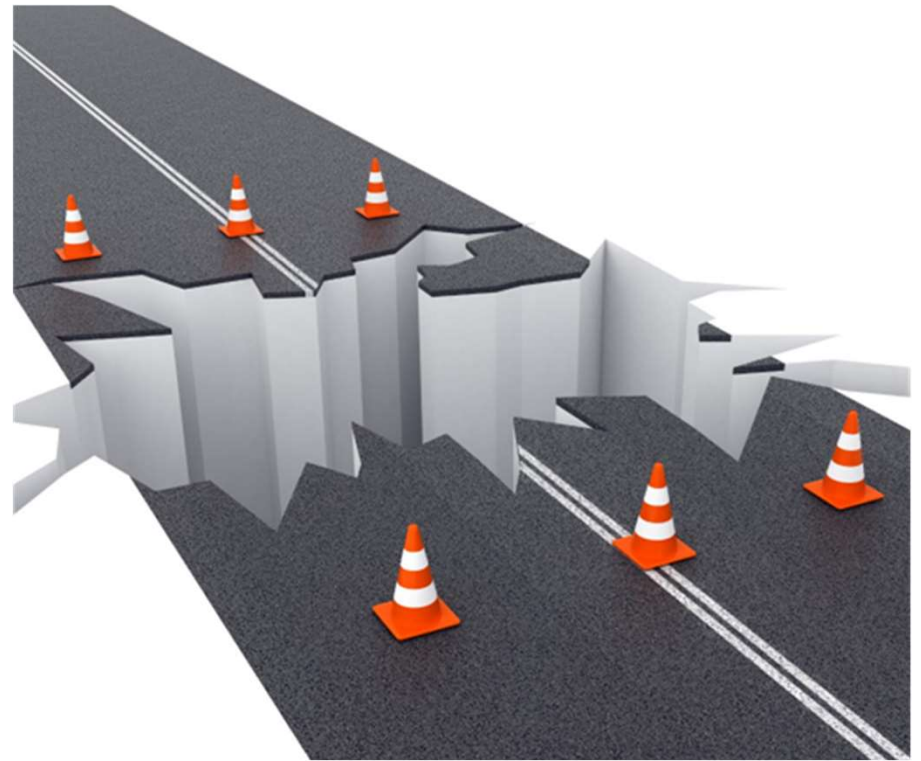
Establishing clear responsibilities for road repairs is crucial for efficient recovery and maintenance efforts.

Agency Accountability

Identifying the accountable agency for each road segment ensures effective management and quicker response to damage.

Streamlining Recovery Efforts

A well-defined responsibility framework helps streamline recovery efforts and reduces delays in road repair.



Clarifying Ownership: Private, Federal, State



Importance of Road Ownership

Understanding road ownership is essential for effective recovery efforts and managing responsibilities during emergencies.

Coordination During Recovery

Clarification of ownership ensures proper coordination among various authorities during road repairs and recovery processes.

Preventing Repair Delays

Clear ownership delineation helps prevent delays in repairs and ensures timely recovery after incidents.



Adopting and Enforcing Building Codes and Standards



Implementing Hazard-Resistant Building Codes and Land-Use Regulations

Importance of Building Codes

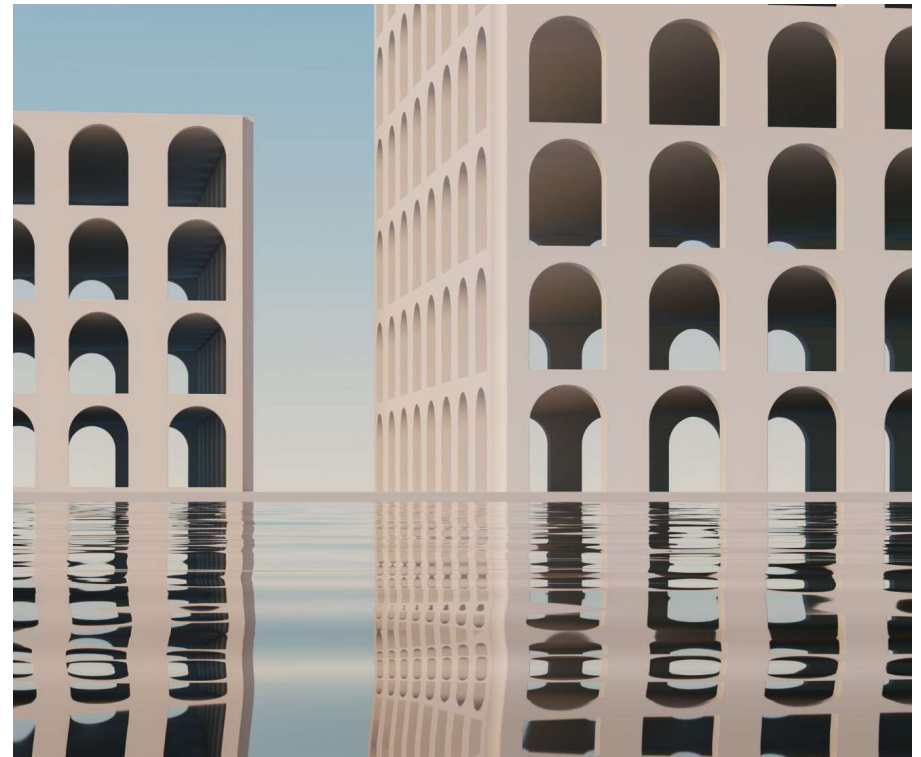
Hazard-resistant building codes are crucial for ensuring that constructions can withstand disasters, protecting lives and property.

Land-Use Regulations

Land-use regulations help in planning and zoning areas to minimize risk and enhance safety during natural disasters.

Disaster Mitigation Strategies

Implementing these codes and regulations is a proactive approach to disaster mitigation, reducing future risks significantly.



Enforcing Compliance to Reduce Disaster Impacts

Importance of Building Codes

Building codes are crucial for ensuring structures can withstand disasters, thereby reducing potential impacts on safety and property.

Regular Inspections

Conducting regular inspections ensures compliance with building codes and helps identify potential hazards before they lead to disasters.

Penalties for Non-Compliance

Implementing penalties for non-compliance encourages adherence to safety standards and promotes a culture of safety within the construction industry.



An aerial photograph of a city at dusk, with a blue overlay. The city features various buildings, including a prominent church with a tall steeple on the left and a modern building on the right. The text "Ensuring EPD Permits Are in Place" is centered over the image.

Ensuring EPD Permits Are in Place



Approving and Permitting Debris Staging Areas Before Disasters

Importance of Preparedness

Designating debris staging areas in advance ensures a swift response to disasters, reducing recovery time significantly.

Faster Response and Recovery

Approved staging areas allow emergency teams to act quickly, enhancing overall disaster management efficiency.

Pre-Approval Process

Proactively identify suitable locations, secure necessary permits, and develop a comprehensive debris management plan. This includes abiding by local, state, and federal regulations.



Obtaining Burn Permits and Other Necessary Permits

Importance of Permits

Obtaining necessary permits is crucial for ensuring disaster operations proceed smoothly without any legal hindrances.

Regulatory Compliance

Compliance with regulatory requirements helps avoid delays and ensures effective disaster response strategies are in place.

Types of Permits

Burn Permits, Floodplain Development Permits, Debris Removal Permits, Demolition Permits.



An aerial photograph of a city at dusk, with a blue color overlay. The image shows various buildings, including a prominent church with a tall steeple on the right and several multi-story commercial buildings in the foreground. The sky is dark, and the city lights are visible.

Hazard Mitigation Plans and Contracts



Overview of Hazard Mitigation Plans



- FEMA-approved plans identify risks and vulnerabilities.
- Know your plan.
- Regular updates are crucial for current conditions.
- Essential for disaster preparedness and response.
- Partner with the County.

Establishing Pre-Disaster Contracts

- Create emergency contracts for debris removal.
- Ensure companies are on standby for disasters.
- Include contracts for management and housing.
- GMA is working with the State to develop state-approved joint contracts for debris removal.

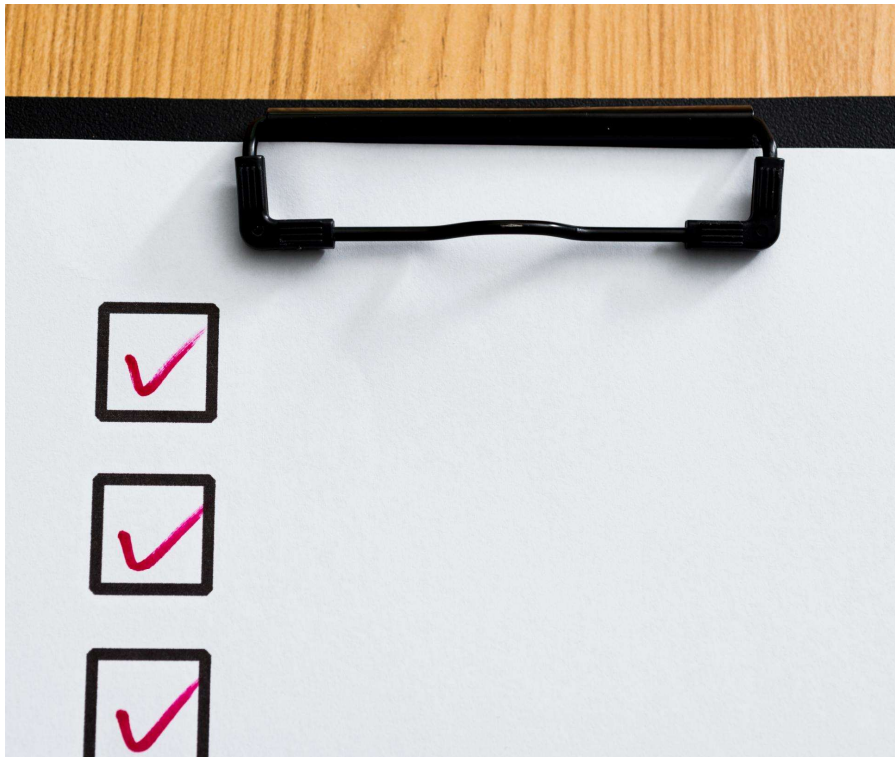




Asset Inventories and --- Documentation



Asset Inventory Management



- Maintain a comprehensive asset inventory.
- Stock essential items for disaster response.
- Coordinate with nearby jurisdictions for resources.
- Ensure that equipment rental is in line with FEMA rates for reimbursement.

Proper Documentation and Record-Keeping

Keep detailed records of city infrastructure.

Document pre-disaster conditions and maintenance.

Track emergency management costs and expenditures.

Understand ALL the things you should track for FEMA-declared emergencies. It is better to have records and not need them than to need the records and not have them and lose funding.



An aerial photograph of a city at dusk, with a blue color overlay. The city features various buildings, including a prominent church with a tall steeple on the right and several multi-story commercial buildings in the foreground. The sky is dark, and the city lights are visible.

Risk Assessments



Conducting Regular Risk Assessments

- Evaluate vulnerability to specific hazards.
- Identify critical infrastructure for protection.
- Prioritize measures to mitigate identified risks.



An aerial photograph of a city at dusk, with a blue color overlay. The city features various buildings, including a prominent church with a tall steeple on the right and several multi-story commercial buildings in the foreground. The sky is dark, and the city lights are visible.

FEMA & Compliance



Pre-registering with FEMA

- Obtain a Unique Entity Identifier number.
- Register with the System for Award Management.
- Understand FEMA's Public Assistance program.



FEMA

Compliance with Federal Standards

- Understand federal procurement requirements.
- Develop compliant procurement policies.
- Prevent de-obligation of FEMA funds.



Updating Policies for Emergencies

- Revise personnel policies for reimbursements.
- Adjust emergency purchasing thresholds.
- Ensure essential employees are recognized.



An aerial photograph of a city at dusk, with a blue overlay. The city features various buildings, including a prominent church with a tall steeple on the left and a modern building on the right. The sky is dark, and the city lights are visible.

National Flood Insurance Program (NFIP)



Participation in NFIP

- Ensure compliance with NFIP requirements.
- Address flood-prone areas effectively.
- Encourage property owners to secure flood insurance.



An aerial photograph of a city at dusk, with a blue overlay. The city features various buildings, including a prominent church with a tall steeple on the right and several multi-story commercial buildings in the foreground. The sky is dark, and the city lights are visible.

Mutual Aid Agreements Emergency & Continuity Planning



Building Mutual Aid Agreements

- Establish agreements with neighboring jurisdictions.
- Facilitate shared resources during disasters.
- Enhance community support networks.



Emergency and Continuity Planning

- Identify decision-makers within the city.
- Regularly update emergency operations plans.
- Conduct drills to validate operational readiness.



An aerial photograph of a city at dusk, with a blue color overlay. The city features various buildings, including a prominent church with a tall steeple on the right and several multi-story commercial buildings in the foreground. A thin yellow horizontal line is positioned above the title text.

Budgeting for Disasters



Budgeting for Disaster Preparedness

- Allocate budget for disaster-related activities.
- Include matching funds for FEMA grants.
- Prioritize disaster preparedness initiatives.





Build Partnerships



Partnerships with Community Organizations

- Engage local nonprofits and businesses.
- Build community resilience through collaboration.
- Identify housing and supply sources.



Housing Solutions for Responders and Those Affected by the Storm

- Form a Housing Task Force.
- Conduct needs assessments for housing.
- Coordinate with local stakeholders.
- Consider housing options for clean-up teams, electrical crews, medical teams, and emergency crews.
- Consider other needs: laundry, meals, supplies.



An aerial photograph of a city at dusk, with a blue color overlay. The city features various buildings, including a prominent church with a tall steeple on the right and several multi-story commercial buildings in the foreground. A thin yellow horizontal line is positioned above the word "Training".

Training



Training Staff and Officials

- Provide disaster response training to staff.
- Familiarize officials with documentation processes.
- Ensure city officials understand what **role they play** in the process.
- Prepare a pre-disaster packet for quick access.



An aerial photograph of a city at dusk, with a blue color overlay. The city features a mix of historic and modern architecture, including several tall buildings and a prominent church with a steeple. A yellow horizontal line is positioned above the word "Conclusion".

Conclusion

Summary



Preparedness for Disasters

- Ensuring preparedness for disasters involves planning, training, and regular updates to respond effectively.

Coordination Efforts

- Effective disaster management requires coordination among various agencies and stakeholders to ensure a unified response.

Clear Communication

- Clear communication is essential for ensuring that all parties are informed and prepared during a disaster.

Comprehensive Planning

- Comprehensive planning allows organizations to anticipate challenges and develop strategies to overcome them during disasters.

An aerial photograph of a city at dusk, with a blue color overlay. The image shows various buildings, including a large brick building in the foreground and a church with a tall steeple in the background. A yellow horizontal line is positioned above the word "Questions".

Questions



An aerial photograph of a city at dusk, with a blue color overlay. The city features various buildings, including a prominent church with a tall steeple on the right and several multi-story commercial buildings in the foreground. A yellow horizontal line is positioned above the text.

THANK YOU!

