



PHILADELPHIA /ORCHESTRA

Yannick Nézet-Séguin
Music & Artistic Director

PLAYBILL®

MAY/JUNE 2025

Contents

May/June 2025



Page 2

From the Interim President and CEO

Page 8

Marian Anderson Hall

Page 9

Musicians Behind the Scenes

Page 10

Immortal *Tristan and Isolde*

A thousand-year-old story continues to haunt our music and our culture

Page 19

The Program

On the Cover:

Specially design art for the Wagner's *Tristan and Isolde* concerts, June 1 and 8, 2025, by Haeg Design

PLAYBILL®

President & CEO: Philip S. Birsh
Chief Financial Officer: Shamindra Jagnanan
Chief Operating Officer & VP: Alex Birsh
Director of Manufacturing: Robert Cusanelli
Executive Assistant to CEO and COO: Dalconerys Reyes
Managing Editor, Classic Arts: Stephen Vratatos
Art Director: Kesler Thibert
Production Manager: Jenna Perrino
Production Manager: Alex Near
Progress Manager: Sean Kenny
Progress Specialist: Benjamin Hyacinthe
Creative Services Manager: Dean Greer
Managing Program Editor: Matt Bonanno
Program Editors: Amy Asch
Silvia Figueroa
Scott Hale
Dave Porello
Khadijah Rentas

Publisher, West Coast Sales and Partnerships: Glenn Shaevitz
Vice President of Sales: Joshua Stone
Associate Publisher: Jolie Schaffzin

Head of Sales for Theatrical and Regional Markets: Nicholas Foster
Director, Restaurant Advertising: Clara Barragán
National Sales Director: Grace Simpson
Advertising Sales Associate: Katie Clooney-Gainey
Francesca Reese
Sales Marketing Associate: Sabrina Rasizzi

Advertising Sales
729 Seventh Avenue, 4th Floor
New York, New York 10019
(212) 557-5757

Chairman: Philip S. Birsh
Editor in Chief Emeritus: Joan Alleman
Secretary/Treasurer: Shamindra Jagnanan

From the Interim President and CEO



Dear Friends:

Summer is a special time for the Orchestra, when we perform residencies in locations that feel like second homes to us. This year is especially celebratory as we mark 60 years of performing at the Saratoga Performing Arts Center and 50 years of performing at the Mann Center for the Performing Arts, two venues the Orchestra helped to open. In addition, this summer will mark 18 years since our first performance at the Bravo! Vail Music Festival.

The Philadelphia Orchestra is widely lauded for its ability to perform many styles of music, and summer residencies showcase this variety from one night to the next. This season at the Mann, for example, we open with an all-Beethoven concert, play the soundtrack to *Star Wars: A New Hope* while the film is shown on giant screens, and the following night perform with superstar Cynthia Erivo. Additional concerts include a 125th birthday salute for the Orchestra (ahead of our official anniversary on November 16), a celebration of the Eagles's championship season, and a collaboration with rapper Nas.

Yannick and the Orchestra have been deeply committed to performing works by historically underrepresented composers, and residencies give us the opportunity to take some of those remarkable works to audiences in other cities. This year we look forward to performing William Grant Still's Symphony No. 2 ("Song of a New Race") in Saratoga and Augusta Holmès's "La Nuit et l'amour" from *Ludus pro patria* at Bravo! Vail. We also bring former Composer in Residence Gabriela Lena Frank's *Picaflor: A Future Myth* to Vail, which partnered with us to co-commission the piece.

I hope you will join us at our Mann Center residency in June and July. And if you happen to find yourselves in either Vail, Colorado, in July or Saratoga Springs, New York, in August, please come see us.

Best regards,

Ryan Fleur
Interim President and CEO

The Philadelphia Orchestra

2024–2025 Season

Yannick Nézet-Séguin

Music and Artistic
Director

*Walter and Leonore
Annenberg Chair*

Marin Alsop

Principal Guest Conductor
*Ralph and Beth Johnston
Muller Chair*

Naomi Woo

Assistant Conductor

Joseph Conyers

Education and
Community Ambassador
*Mark and Tobey Dichter
Chair*

Charlotte Blake Alston

Storyteller, Narrator,
and Host
*Osagie and Losenge
Imasogie Chair*

First Violins

David Kim, Concertmaster
Dr. Benjamin Rush Chair
Juliette Kang, First
Associate Concertmaster
*Joseph and Marie Field
Chair*
Christine Lim, Associate
Concertmaster
Marc Rovetti, Assistant
Concertmaster
*Dr. James F. Dougherty
Chair*
Barbara Govatos
Robert E. Mortensen Chair
Jonathan Beiler
Hirono Oka

Richard Amoroso

*Robert and Lynne Pollack
Chair*

Yayoi Numazawa

Jason DePue

Larry A. Grika Chair

Jennifer Haas

Miyo Curnow

Elina Kalendarova

Daniel Han

Julia Li

William Polk

Mei Ching Huang

Second Violins

Kimberly Fisher, Principal

Peter A. Benoliel Chair

Paul Roby, Associate
Principal

Sandra and David

Marshall Chair

Dara Morales, Assistant
Principal

Anne M. Buxton Chair

Philip Kates

Peter A. Benoliel Chair

Davyd Booth

Paul Arnold

*Joseph Brodo Chair, given
by Peter A. Benoliel*

Boris Balter

Amy Oshiro-Morales

*Volunteer Committees
Chair*

Yu-Ting Chen

Jeoung-Yin Kim

Willa Finck

John Bian

MuChen Hsieh

Eliot Heaton

Violas

Choong-Jin Chang,
Principal

*Ruth and A. Morris
Williams, Jr., Chair*

Kirsten Johnson,
Associate Principal

Kerri Ryan, Assistant
Principal

Burchard Tang

Renard Edwards

Anna Marie Ahn
Petersen

Piasecki Family Chair

David Nicaastro

Che-Hung Chen

Rachel Ku

Marvin Moon

Meng Wang

Hsiang-Hsin Ching

Cellos

Hai-Ye Ni, Principal

Priscilla Lee, Associate
Principal

Yumi Kendall, Assistant
Principal

*Elaine Woo Camarda and
A. Morris Williams, Jr.,
Chair*

Richard Harlow

Kathryn Picht Read

John Koen

Derek Barnes

Alex Veltman

Jiayin He

Michael Katz

Basses

Joseph Conyers,
Principal

*Carole and Emilio
Gravagno Chair*

Gabriel Polinsky,
Associate Principal

Tobias Vigneau, Assistant
Principal
David Fay*
Duane Rosengard
Nathaniel West
Michael Franz
Christian Gray

*Some members of the string
sections voluntarily rotate
seating on a periodic basis.*

Flutes

Jeffrey Khaner, Principal
*Paul and Barbara Henkels
Chair*
Patrick Williams,
Associate Principal
*Rachelle and Ronald
Kaiserman Chair*
Olivia Staton
Erica Peel, Piccolo

Oboes

Philippe Tondre, Principal
Samuel S. Fels Chair
Peter Smith, Associate
Principal
Jonathan Blumenfeld
Edwin Tuttle Chair
Elizabeth Starr
Masoudnia,
English Horn
*Joanne T. Greenspun
Chair*

Clarinets

Ricardo Morales,
Principal
*Leslie Miller and Richard
Worley Chair*
Samuel Caviezel,
Associate Principal
*Sarah and Frank Coulson
Chair*

Socrates Villegas
Paul R. Demers, Bass
Clarinet
*Peter M. Joseph and Susan
Rittenhouse Joseph Chair*

Bassoons

Daniel Matsukawa,
Principal
Richard M. Klein Chair
Mark Gigliotti,
Co-Principal
Angela Anderson Smith
Holly Blake,
Contrabassoon

Horns

Jennifer Montone,
Principal
*Gray Charitable Trust
Chair*
Jeffrey Lang, Associate
Principal
*Hannah L. and J. Welles
Henderson Chair*
Christopher Dwyer
Chelsea McFarland
Ernesto Tovar Torres

Trumpets

(position vacant)
Principal
*Marguerite and Gerry
Lenfest Chair*
Jeffrey Curnow,
Associate Principal
Anthony Prisk

Trombones

Nitzan Haroz, Principal
*Neubauer Family
Foundation Chair*
Matthew Vaughn,
Co-Principal
Jack Grimm

Blair Bollinger, Bass
Trombone
*Drs. Bong and Mi Wha
Lee Chair*

Tuba

Carol Jantsch, Principal
*Lyn and George M. Ross
Chair*

Timpani

Don S. Liuzzi, Principal
Dwight V. Dowley Chair
Angela Zator Nelson,
Associate Principal

Percussion

Christopher Deviney,
Principal
Charlie Rosmarin,
Associate Principal
Angela Zator Nelson

Piano and Celesta

Kiyoko Takeuti

Keyboards

Davyd Booth

Harp

Elizabeth Hainen,
Principal

Librarians

Nicole Jordan, Principal
Holly Matthews

Stage Personnel

Dennis Moore, Jr.,
Manager
Francis "Chip" O'Shea III
Aaron Wilson

*On leave

Music and Artistic Director



Landen Nordeman

Yannick Nézet-Séguin is currently in his 13th season with The Philadelphia Orchestra, serving as music and artistic director. An inspired leader, Yannick, who holds the Walter and Leonore Annenberg Chair, is both an evolutionary and a revolutionary, developing the mighty “Philadelphia Sound” in new ways. His collaborative style, deeply rooted musical curiosity, and boundless enthusiasm have been heralded by critics and audiences alike. The *New York Times* has called him “phenomenal,” adding that “the ensemble, famous for its glowing strings and homogenous richness, has never sounded better.”

Yannick has established himself as a musical leader of the highest caliber and one of the most thrilling and sought-after talents of his generation. He became the third music director of New York’s Metropolitan Opera in 2018. In addition, he has been artistic director and principal conductor of Montreal’s Orchestre Métropolitain since 2000. In 2017 he became the third-ever honorary member of the Chamber Orchestra of Europe. He served as music director of the Rotterdam Philharmonic from 2008 to 2018 (he is now honorary conductor) and was principal guest conductor of the London Philharmonic from 2008 to 2014. He has made wildly successful appearances with the world’s most revered ensembles and at many of the leading opera houses.

Yannick has shown a deep commitment to expanding the repertoire by embracing an ever-growing and diverse group of today’s composers and by performing the music of under-appreciated composers of the past. In 2018 he signed an exclusive recording contract with Deutsche Grammophon. Under his leadership The Philadelphia Orchestra returned to recording with 14 releases on that label, including *Florence Price Symphonies Nos. 1 & 3*, which won a GRAMMY® Award for Best Orchestral Performance in 2022.

A native of Montreal, Yannick studied piano, conducting, composition, and chamber music at Montreal’s Conservatory of Music and continued his studies with renowned conductors, most notably Carlo Maria Giulini; he also studied choral conducting with Joseph Flummerfelt at Westminster Choir College. Among Yannick’s honors are an appointment as Companion of the Order of Canada; Companion to the Order of Arts and Letters of Quebec; an Officer of the Order of Quebec; an Officer of the Order of Montreal; an Officier de l’Ordre des Arts et des Lettres; *Musical America’s* 2016 Artist of the Year; ECHO KLASSIK’s 2014 Conductor of the Year; a Royal Philharmonic Society Award; Canada’s National Arts Centre Award; the Prix Denise-Pelletier; the Oskar Morawetz Award; and honorary doctorates from the University of Quebec, the Curtis Institute of Music, Westminster Choir College of Rider University, McGill University, the University of Montreal, the University of Pennsylvania, Laval University, and Drexel University.

To read Yannick’s full bio, please visit philorch.org/conductor.

Marian Anderson Hall

Adrian Siegel Collection/Philadelphia Orchestra Archives



Marian Anderson with Music Director Eugene Ormandy during a Philadelphia Orchestra rehearsal at the Academy of Music in December 1938

On June 8, 2024, Verizon Hall at the Kimmel Center for the Performing Arts was officially rededicated as Marian Anderson Hall in honor of the legendary Black contralto, civil rights icon, and Philadelphian. The first major concert venue in the world to honor Marian Anderson—85 years after she was barred from performing at Constitution Hall in Washington, D.C., because of her race—the hall is a permanent monument to its namesake’s artistry and achievements, a reflection of the inclusive future she helped to engender, and an active testament to the intersection of music, art, and positive social impact. We look forward to honoring Marian Anderson in perpetuity with a venue that reflects the ideals by which she lived her life: equity, justice, freedom, and the belief that the arts are for everyone.

Marian Anderson Hall was named in her honor by a visionary \$25-million philanthropic gift from Richard Worley and Leslie Miller. Worley has been a member of The Philadelphia Orchestra’s Board of Trustees since 1997 and served as board chair from 2009 to 2019. Miller is a former Kimmel Center trustee and previous acting president of the Kimmel Center. They are among the largest donors in Philadelphia Orchestra history. Additional generous support for Marian Anderson Hall was given by Sidney and Caroline Kimmel.

Musicians Behind the Scenes

MuChen Hsieh Violin

Chloe McKenna



Where were you born?

I was born in Taipei, Taiwan.

What is your most treasured possession?

Gowns, concert clothes, dresses, and mix-match outfits made by my 86-year-old grandmother over the years. Some of my outfits were made 40+ years ago by my grandma for herself. Others were made for me since I was in high school for special occasions and concerts.

What's your favorite food?

I love so many kinds of food; I can't pick a favorite! I like a variety of cuisines: Chinese/Taiwanese, Korean, Thai, sushi, and Italian are my favorites.

Tell us about your instrument.

I play a Joseph Curtin violin made in 1989 and a Benoit Rolland bow I commissioned in 2014.

What's in your instrument case?

A pencil case, humidity pack, five different kinds of violin mutes, viola rosin, ear plugs, and a tiny dachshund bag charm.

What piece of music never fails to move you?

The second movement of Ravel's Piano Concerto in G major, especially the English horn solo.

What do you love most about performing?

I love the energy a performer can create and transfer to the audience.

When did you join the Orchestra? In July 2024.

Do you play any other instruments?

I grew up playing the piano.

What's your favorite Philadelphia restaurant?

Vernick Food & Drink, Illata, and Kalaya.

Do you speak any other languages?

I speak fluent Mandarin and understand Taiwanese.

What do you like to do in your spare time?

I like to cook, bake, and try new restaurants.

What is your favorite memory with the Orchestra?

Although I only joined in 2024, I have a fond memory of the 2024 Canada tour when we performed Rachmaninoff's Symphony No. 2 and Brahms's *A German Requiem*. I was so in awe of the colors and rich tone in the Rachmaninoff. The string sound was so lush, and it was a blast playing with a group with such history.

Immortal *Tristan and Isolde*

A thousand-year-old story continues to
haunt our music and our culture

By Paul J. Horsley

Wagner's *Tristan and Isolde* tells a straightforward tale with surprising economy of means. Yet its musical-dramatic design is fantastically complex, and its historical impact—not just on music but on literature, art, and cinema—has been so profound that we are, in many ways, still assessing it. The Philadelphia Orchestra, which in 1934 presented the first complete *Tristan* heard in the United States, performs the opera in concert this June, with Music and Artistic Director Yannick Nézet-Séguin and internationally renowned soloists, including Stuart Skelton and Nina Stemme.

Tristan exerted enormous influence on its contemporaries, although it wasn't until several years after its 1865 premiere in Munich that it began to gather steam—with performances in Berlin (1876), London (1882), Vienna (1883), and in 1886, New York, Prague, and Bayreuth. Initially, many music critics reacted negatively to it. The *Allgemeine musikalische Zeitung* of July 5, 1865, called it “the glorification of sensual pleasure, tricked out with every titillating device ... an act of indecency.”

Philosophers, in contrast, have been inclined to describe *Tristan* in high-flown, even hyperbolic terms. Friedrich Nietzsche called it “the real *opus metaphysicum* of all art ... overpowering in its simple grandeur” and even after his celebrated break with Wagner in the late 1870s he acknowledged the opera's legacy: “I am still in search of a work that exercises such a dangerous fascination, such a spine-tingling and blissful infinity as *Tristan*. I have sought in vain, in every art form.”

Tristan remains one of the most psychologically dense dramatic works that has ever graced the stage. It “transcends its scenario of a conventional love story to offer a profound meditation on the nature of the material world, and on the mysteries of human existence itself,” as scholar Barry Millington writes. Yet it tells a fundamentally human tale. A nobleman and a beautiful princess fall in love—rather inconveniently, as they are en route to the woman's arranged wedding to the nobleman's uncle. The sudden passion that strikes Tristan and Isolde on board a ship is so intense that it leads to extravagant declarations of eternal love, even death-wishes. (Perhaps the love-potion that Brangäne, her maid, administers acts as an accelerant to an already-existing flame: “less a maker of uncontrollable passion,” writes Henry Krehbiel, “than a drink which causes the lovers to forget duty, honor, and the respect due to the laws of society.”) ➤

John William
Waterhouse's
*Tristan and Isolde
with the Potion*
(1916)



Richard Wagner,
circa 1860



Nevertheless, in Wagner's world a love this ferocious brings a "sweet suffering" that can only be extinguished, or apotheosized, through death. King Marke arrives to forgive the couple and permit them to marry, but he is too late. Tristan succumbs to Melot's sword, and Isolde sings her "Liebestod."

Wagner has structured the opera with great clarity, even simplicity. Its three weighty acts are organized symmetrically: The first is devoted to Isolde, the third to Tristan, and the second to the union of the two. Moreover, the primary action is in the hands of three almost-matching pairs of characters: Tristan and his attendant, Kurwenal; Isolde and Brangäne; and Marke and his disgruntled courtier, Melot.

If the story seems elemental, even archetypal, it is partly because it dates back to a foundational

12th-century tale, *Tristan and Iseult*, aspects of which can be traced to even earlier Irish tales such as *The Pursuit of Diarmuid and Gráinne*. And if a tale of warring families and star-crossed lovers feels familiar, it might be because the author of a well-known 16th-century tragedy was obviously familiar with the medieval tale. Some believe Shakespeare's *Romeo and Juliet* is an intentional nod to the Tristan stories.

Tristan was the fruit of Wagner's longstanding fascination with medieval legends, folk tales, and ancient heroes of Norse and Celtic mythology, which found expression in such figures as Tannhäuser, Lohengrin, Parsifal, and Siegfried. "As was usual when a legend seized his imagination," writes biographer Curt von Westernhagen, "Wagner was closely identifying himself with its hero." There is little doubt that the composer placed himself, psychologically speaking, in the middle of his own opera. Penniless, unhappy in marriage, and on the verge of nervous collapse, Wagner had fallen under the dazzling spell of Mathilde Wesendonck—who together with her husband, Otto, supported the composer financially during this period. Meanwhile, his wife, Minna, was understandably perturbed, as Richard and Mathilde carried on a somewhat public (if possibly never consummated) affair.

With pressures mounting on all sides, Wagner was nearing a personal and an artistic crossroads. In 1857 he famously broke off from composing *Siegfried*, the third of his *Ring of the Nibelung* operas, not returning until more than a decade later, after having completed both *Tristan* (1857–59) and *Die Meistersinger von Nürnberg* (1862–67).

The pause was sparked, in part, by tumultuous events in Wagner's life during the 1850s, including years of political exile. But one cannot underestimate the extent to which this was also an artistic crisis. The harmonic, dramatic, and philosophical innovations of *Tristan* represented a fundamental shift not just in Wagner's musico-dramatic style but in the tonal landscape of Western music. When he resumed the *Ring* in 1868, it is no exaggeration to say that he was a composer transformed. "One can see that he would not have been able to write [*Götterdämmerung*] without first having mastered the harmonies of *Tristan* and the counterpoint of *Die Meistersinger*," von Westernhagen writes. ►

The innovations of *Tristan* were not purely musical or dramatic: They were also philosophical and, perhaps just as significantly, sexual. The composer's immersion in Arthur Schopenhauer's *The World as Will and Idea* beginning in 1854 exerted a formidable impact on the composer's libretto for *Tristan*. Schopenhauer's concepts, influenced by Buddhist thought, maintained that by denying our "will" we relinquish individuality and begin learning empathy—losing ourselves in a virtuous state of selflessness.

Schopenhauer also believed that music was the supreme art form, and that the sound world can guide us through situations in which words fail. "There are limits to what can be even symbolically represented on the stage," writes Robert Gutman of what we might call *Tristan's* sex scenes, "and the music must tell the full tale to the audience, too often led astray by the unruffled attitudes of soprano and tenor ... singing at one another while decorously seated on a papier-mâché bench."

Regardless of how one stages the scene in Act II where Marke and his men interrupt the couple *in flagrante delicto*, the music indicates all too clearly the effect that the intrusion has on the lovers.

Considering the formidable resources that Wagner corralled for *Tristan*, the year 1865 stands as a pivot-point in the history of music. It would be another half-century before Arnold Schoenberg emancipated the 12 notes of the chromatic scale to treat them as co-equals. But when Schoenberg stated that his efforts to systematize atonality were an attempt to "break the barriers of a past aesthetic," *Tristan* was certainly one of the works he had in mind. It had, as much as any other composition, signaled the impending breakdown of traditional tonality.

Among the more disruptive early examples of the "post-*Tristan* era" were Schoenberg's song cycle *Gurrelieder* (1900–11) and his monodrama for soprano *Erwartung* (1909). The latter is a sort of miniature *Tristan*, complete with a compact love-death finale. The *Tristan* effect can



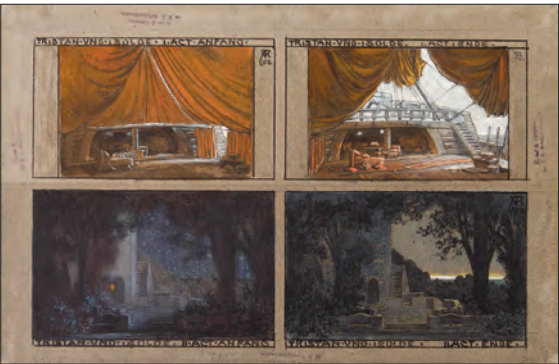
Music and Artistic Director
Yannick Nézet-Séguin leading
The Philadelphia Orchestra and
soloists in Puccini's *La bohème*,
June 2024

also be traced through works by Mahler, Webern, Debussy, and Berg (Lyric Suite, 1925–26), among others. There is also self-conscious and at times satirical use of the *Tristan* chord in composers as diverse as Britten and Peter Schickele, Bernard Herrmann and Radiohead.

The enervating power of *Tristan* is found in literature, too. Thomas Mann’s 1903 novella *Tristan* takes place in a sanatorium, where the fragile Gabriele (Isolde) is recovering from a tracheal illness. Fellow resident Detlev Spinell (Tristan) is a flighty writer who bonds with Gabriele over a love of the arts, much to the chagrin of her bourgeois husband, Anton (Marke). In Willa Cather’s vivid 1904 short story *A Wagner Matinee*, a young man living in Boston invites his aging aunt for a visit; as Aunt Georgina listens to a Boston Symphony all-Wagner concert, she melts into an emotional heap from the sense of loss: from a memory of the life she gave up.



Ludwig Schnorr von Carolsfeld and his wife, Malvina, starred as Tristan and Isolde at the 1865 premiere of the opera.



Alfred Roller’s set designs for Acts I and II of the 1903 Viennese production of *Tristan and Isolde* conducted by Gustav Mahler

Tristan has had an impact on the art world, as well. The early “conceptual” set and costume designs of Secession artist Alfred Roller, created for the 1903 Viennese production that Mahler conducted, helped push operatic production into an era of stylized abstraction, which ultimately reflected the art of the period.

Tristan has also eked into cinema. In Luis Buñuel’s and Salvador Dali’s surrealist *L’Âge d’or* (1930), a couple flouts taboo by making passionate love in awkward places—each time to music of *Tristan*—only to be suppressed by society, government, religion. In Lars von Trier’s *Melancholia*, extended passages of the opera fit neatly into an end-of-the-world scenario: There is love and there is hate, and there will be death. “Human insistence on suffering is bringing about its own destruction,” writes *OperaWire*’s David Salazar of this savvy film, adding that this “could not be more in line with the thinking of Arthur Schopenhauer.”

Paul Horsley is performing arts editor of the Independent in Kansas City. Before that he was music and dance critic for the Kansas City Star and program annotator and musicologist for The Philadelphia Orchestra.

2024–2025 | 125th Season
Marian Anderson Hall

Saturday, May 3, at 7:00

Kristin Chenoweth with The Philadelphia Orchestra

With Rob Fisher Conductor

Tonight’s program will be announced from the stage.

This program runs approximately two hours.

This performance is sponsored by **KeyBank**.

Philadelphia Orchestra concerts are broadcast on WRTI 90.1 FM on Sunday afternoons at 1 PM and are repeated on Monday evenings at 7 PM on WRTI HD 2. Visit www.wrti.org to listen live or for more details.

PHILADELPHIA ORCHESTRA/125

YANNICK NÉZET-SÉGUIN
MUSIC & ARTISTIC DIRECTOR



The GRAMMY® Award-winning Orchestra celebrates
125 years in this unforgettable 2025–26 season.

Subscribe Now!



PHILORCH.ORG/2526SEASON



The Philadelphia Orchestra

The world-renowned Philadelphia Orchestra strives to share the transformative power of music with the widest possible audience, and to create joy, connection, and excitement through music in the Philadelphia region, across the country, and around the world. Through innovative programming, robust education initiatives, a commitment to its diverse communities, and the embrace of digital outreach, the ensemble is creating an expansive and inclusive future for classical music and furthering the place of the arts in an open and democratic society. In June 2021 the Orchestra and its home, the Kimmel Center, united. Today, The Philadelphia Orchestra and Ensemble Arts brings the greatest performances and most impactful education and community programs to audiences in Philadelphia and beyond.

Yannick Nézet-Séguin is now in his 13th season with The Philadelphia Orchestra, serving as music and artistic director. His connection to the ensemble's musicians has been praised by both concertgoers and critics, and he is embraced by the musicians of the Orchestra, audiences, and the community. In addition to expanding the repertoire by embracing an ever-growing and diverse group of today's composers, Yannick and the Orchestra are committed to performing and recording the works of previously overlooked composers.

Your Philadelphia Orchestra takes great pride in its hometown, performing for the people of Philadelphia year-round, at the Kimmel Center for the Performing Arts, around the community, over the airwaves, and online. The Kimmel Center has been the ensemble's home since 2001, and in 2024 Verizon

Hall at the Kimmel Center was officially rededicated as Marian Anderson Hall in honor of the legendary contralto, civil rights icon, and Philadelphian. The Orchestra's award-winning education and community initiatives engage over 50,000 students, families, and community members of all ages through programs such as PlayINs; side-by-sides; PopUP concerts; Our City, Your Orchestra Live; the free annual Martin Luther King, Jr., Tribute Concert; School Concerts; sensory-friendly concerts; open rehearsals; the School Ensemble Program; All-City Orchestra Fellowships; and residency work in Philadelphia and abroad.

Through concerts, tours, residencies, and recordings, the Orchestra is a global ambassador and one of our nation's greatest exports. It performs annually at Carnegie Hall, the Mann Center, the Saratoga Performing Arts Center, and the Bravo! Vail Music Festival. The Orchestra also has a rich touring history, having first performed outside Philadelphia in its earliest days. In 1973 it was the first American orchestra to perform in the People's Republic of China, launching a now-five-decade commitment of people-to-people exchange.

Under Yannick's leadership, the Orchestra returned to recording with 14 celebrated releases on the Deutsche Grammophon label, including the GRAMMY® Award-winning *Florence Price Symphonies Nos. 1 & 3*. The Orchestra also reaches thousands of radio listeners with weekly broadcasts on WRTI-FM and SiriusXM. For more information, please visit www.philorch.org.

Soloist

Drew Elhamalawy



Emmy and Tony Award–winning actress and singer **Kristin Chenoweth**’s career spans film, television, voice-over, and stage. In 2015 she received a coveted star on the Hollywood Walk of Fame. In 2009 she received an Emmy Award for Best Supporting Actress in a Comedy Series for her role in *Pushing Daisies*. In 1999 she won a Tony Award for *You’re a Good Man, Charlie Brown*, and in 2004 she was nominated for her original role of Glinda the Good Witch in *Wicked*. She has been nominated for two Emmy Awards and

a People’s Choice Award for her role on *Glee*. She earned a Drama Desk Award, Outer Critics Circle Award, and Broadway.com Audience Choice Award for her lead role in the Roundabout Theatre Company’s *On the Twentieth Century*; she also earned Tony and Drama League award nominations for the role.

Ms. Chenoweth’s newest major project is the development of a musical based on the award-winning 2012 documentary *The Queen of Versailles* and the life of beauty queen, socialite, and TV personality Jacqueline “Jackie” Siegel. Ms. Chenoweth is starring in and producing the show through her production banner Diva Worldwide Entertainment. The musical—which has reunited her with *Wicked* composer Stephen Schwartz—made its world premiere at Boston’s Emerson Colonial Theatre and will make its Broadway debut in the 2025–26 season. She can currently be seen in *Our Little Secret* for Netflix opposite Lindsay Lohan. She also appeared in Apple TV+’s acclaimed musical-comedy series *Schmigadoon!*, receiving a Critics’ Choice Award nomination for Best Supporting Actress in a Comedy Series for her role as Mildred Layton. In 2023 she released her gift book, *I’m No Philosopher, But I Have Thoughts: For Saints, Sinners, and the Rest of Us*. She is also the author of the picture book *What Will I Do with My Love Today* and the memoir *A Little Bit Wicked*, and she is an editor of the essay book *My Moment: 106 Women on Fighting for Themselves*. In 2021 she released her latest holiday album, *HAPPINESS is ... Christmas!* Her album of American Songbook classics, *The Art of Elegance*, was released on Concord Records and debuted at #1 on Billboard’s Current Jazz and Traditional Jazz charts.

Ms. Chenoweth made her Philadelphia Orchestra debut in 2016. She has performed to sold-out audiences across the world, including performances at Carnegie Hall and Royal Albert Hall. She is a passionate supporter of charities and formed a partnership with the Broken Arrow Performing Arts Center (BAPAC) Foundation in her home state of Oklahoma where, in 2015, they launched an annual Broadway Bootcamp providing young Broadway hopefuls with the opportunity to take classes, perform, and learn from top mentors in the entertainment industry. Her accomplishments were honored by her hometown with BAPAC naming the Kristin Chenoweth Theatre in 2012.

PHILADELPHIA/ORCHESTRA

Yannick Nézet-Séguin · Music & Artistic Director

**FOLLOW US ON
SOCIAL MEDIA!**



@philorch



Conductor



Rob Fisher is an internationally recognized music director, conductor, and pianist, and a leading figure in American music and musical theater. He has been a guest of every major orchestra in the country as conductor or pianist and has collaborated many times with Kristin Chenoweth. He made his Philadelphia Orchestra debut at the 2004 New Year's Eve concert.

With the New York Philharmonic, Mr. Fisher conducted the acclaimed concert versions of *Carousel* (earning an Emmy nomination for Best Music Director) and *My Fair Lady*, as well as *Mr. Keillor at 70*. At Carnegie Hall with the Orchestra of St. Luke's, he led gala performances of *Candide*, *Guys and Dolls*, and *The Sound of Music*. He was recently represented on Broadway as the score supervisor and arranger for *An American in Paris* and *Anything Goes*, garnering GRAMMY nominations for both productions. He is also the music supervisor and arranger for *Chicago: The Musical*. He has collaborated in concert and on recordings with such artists as Renée Fleming, Kelli O'Hara, Patti LuPone, Idina Menzel, Brian Stokes Mitchell, and David Hyde Pierce. Mr. Fisher conducted the San Francisco Symphony in the Emmy-winning concert production of *Sweeney Todd* starring Ms. LuPone and George Hearn. He also led the record-breaking production of *The Sound of Music* at the Chicago Lyric Opera.

Mr. Fisher was founding music director and conductor of the New York City Center *Encores!* series from its inception in 1994 until 2005. The series earned a 2000 Tony Award and, in 1997, Mr. Fisher was given the Lucille Lortel Award. He has made numerous recordings for *Encores!* including the GRAMMY Award-winning *Chicago* cast album. Recently he arranged and conducted Renée Fleming's *Broadway*. A native Virginian, he holds degrees from Duke, American, and Mansfield universities.

PHILADELPHIA/ORCHESTRA YOUNG FRIENDS

Sign up for the
Orchestra's
FREE Young
Friends
Membership.



Tickets start at \$30 and get
invites to exclusive events.

Learn more and join online at
philorch.org/young-friends



Photos: Allie Ippolito, Jeff Fusco

Audience Services

We want you to enjoy each and every concert experience you share with us. We would love to hear about your experience at the Orchestra and it would be our pleasure to answer any questions you may have.

Please don't hesitate to contact us via phone at 215.893.1999, in person in the lobby, or online at philorch.org/contactaudienceservices.

Subscriber Services:

215.893.1955, Mon.–Fri., 9 AM–5 PM

Audience Services:

215.893.1999

Mon.–Fri., 10 AM–6 PM

Sat.–Sun., 11 AM–6 PM

Performance nights open until 8 PM

Box Office:

Mon.–Sun., 10 AM–6 PM

The Academy of Music

Broad and Locust Streets

Philadelphia, PA 19102

Tickets: 215.893.1999

Concert dates (two hours before concert time and through intermission):

The Kimmel Center

Broad and Spruce Streets

Philadelphia, PA 19102

Web Site: For information about The Philadelphia Orchestra and its upcoming concerts or events, please visit philorch.org.

Individual Tickets: Don't assume that your favorite concert is sold out. Subscriber turn-ins and other special promotions can make last-minute tickets available. Visit us online at philorch.org or call us at 215.893.1999 and ask for assistance.

Subscriptions: The Philadelphia Orchestra offers a variety of subscription options each season. These multi-concert packages feature the best available seats, ticket exchange privileges, discounts on individual tickets, and many other benefits. Learn more at philorch.org.

Ticket Turn-In: Subscribers who cannot use their tickets are invited to donate them and receive a tax-deductible acknowledgement by calling 215.893.1999. Twenty-four-hour notice is appreciated, allowing other patrons the opportunity to purchase these tickets and guarantee tax-deductible credit.

PreConcert Conversations: PreConcert Conversations are held prior to most

Philadelphia Orchestra subscription concerts, beginning one hour before the performance. Conversations are free to ticket holders, feature discussions of the season's music and music-makers, and are supported in part by the Hirschberg-Goodfriend Fund in memory of Adolf Hirschberg, established by Juliet J. Goodfriend.

Lost and Found: Please call 215.670.2321.

Late Seating: Late seating breaks usually occur after the first piece on the program or at intermission in order to minimize disturbances to other audience members. If you arrive after the concert begins, you will be seated only when appropriate breaks in the program allow.

Accessible Seating: Accessible seating is available for every performance. Please call Audience Services at 215.893.1999 or visit philorch.org/patron-services/plan-your-visit/accessibility for more information.

Assistive Listening: With the deposit of a current ID, hearing enhancement devices are available at no cost from the House Management Office in Commonwealth Plaza. Hearing devices are available on a first-come, first-served basis.

Large-Print Programs: Large-print programs for every subscription concert are available in the House Management Office in Commonwealth Plaza. Please ask an usher for assistance.

Fire Notice: The exit indicated by a red light nearest your seat is the shortest route to the street. In the event of fire or other emergency, please do not run. Walk to that exit.

No Smoking: All public space in Ensemble Arts Philly venues is smoke-free.

Cameras and Recorders: The taking of photographs or the recording of Philadelphia Orchestra concerts is strictly prohibited, but photographs are allowed before and after concerts and during bows. By attending this Philadelphia Orchestra concert you consent to be photographed, filmed, and/or otherwise recorded for any purpose in connection with The Philadelphia Orchestra.

Electronic Devices: All watch alarms should be turned off while in the concert hall and all cellular phones should be switched to silent mode.

Board of Trustees

The Philadelphia Orchestra and Ensemble Arts

BOARD OF TRUSTEES

Ralph W. Muller, Chair

Ryan Fleur

Interim President and
Chief Executive Officer

Yannick Nézet-Séguin

Music and Artistic Director,
The Philadelphia Orchestra

James P. Brandau

Patrick J. Brennan, M.D.

Jeffrey Brown

Karen Dougherty Buchholz

Elaine Woo Camarda

Joseph Ciresi

Michael M. Cone

Joseph Conyers #

Dr. Robert R. Corrato

Sarah Miller Coulson

Robert Curley

Robert J. Delany, Sr.

Mark S. Dichter

Jeff Dittus

Joseph M. Field

Ryan Fleur #

Mark J. Foley

John Fry

Lauren Gilchrist

Donald A. Goldsmith

Juliet J. Goodfriend

Julia Haller, M.D.

Robert C. Heim

Nina Henderson

Osagie O. Imasogie

Patricia Harron Imbesi

Erika H. James, Ph.D.

Philip P. Jaurigue

Kenyatta Johnson #

Bennett Keiser

Christopher M. Keith

David Kim #

Neal W. Krouse

Lauren Lambrugo #

Joan Lau

Brook J. Lenfest

Jeffrey A. Leonard

Bruce G. Leto

Tod J. MacKenzie

Joseph M. Manko, Sr.

David G. Marshall #

John H. McFadden

Jami Wintz McKeon

Stan Middleman

Dara Morales #

Ralph W. Muller

Yannick Nézet-Séguin #

Richelle Rabenou #

Jon Michael Richter

Caroline B. Rogers

Charles E. Ryan

Kerri Ryan #

Adele K. Schaeffer

Peter L. Shaw

Adrienne Simpson

Matthew A. Taylor

Jennifer F. Terry

Sherry Varrelman

Michael R. Vennera

Rev. Dr. Alyn Waller

Nathaniel West #

Rob Wilson

Richard B. Worley

Joseph Zebrowitz

Bin Zhang

Michael D. Zisman

James W. Zug #

Ex-officio

THE PHILADELPHIA ORCHESTRA AND ENSEMBLE ARTS PRESIDENT'S LEADERSHIP COUNCIL

Peter A. Benoliel*

Robert Bogle

Sheldon M. Bonovitz

Kathleen P. Chimicles

Gerard P. Cuddy

Peter Dachowski

Kenneth E. Davis

Rodney D. Day III

Peter Dean

Thomas A. Decker

James Dougherty

Stacy M. Dutton

Carole Haas Gravagno

William P. Hankowsky

H. Edward Hanway

Martin A. Heckscher, Esq.

David F. Hoffman

Joseph H. Jacovini

Lisa D. Kabnick

Ronald L. Kaiserman

Susan Y. Kim

Frederick W. Kyle

Elizabeth M. Mahoney

David G. Marshall

Sandra G. Marshall

Joseph J. McLaughlin, Jr.

Edward A. Montgomery, Jr.

Hilarie L. Morgan

Henry N. Nassau

Jeremiah P. O'Grady

Charles Pizzi

Robert Pollack

Hon. Marjorie O. Rendell

Lyn M. Ross

David B. Rubenstein

John F. Salveson

Molly Shepard

Richard L. Smoot

Leonard A. Sylk

Sheldon L. Thompson

Brian P. Tierney

Charles K. Valutas

Ramona Vosebikian

James W. Zug

**Deceased*

As of March 2025

YOUR SUPPORT MAKES A DIFFERENCE!



The Philadelphia Orchestra depends on support from patrons like you to share the transformative power of the performing arts and arts education with the widest possible audience. The generosity of our donors makes it possible to present hundreds of performances each season, including free community and education events for audiences of all ages.

In appreciation, annual donors to The Philadelphia Orchestra receive a variety of member benefits, including:

- Advance purchase opportunities for the best seats in the house
- Invitations to members-only events
- Ticket discounts
- And more exclusive opportunities that bring you closer to the art form you love

Explore our membership levels, benefits, and flexible payment options at philorch.org/membership.

JOIN US TODAY!

HOW TO MAKE A GIFT



Photo: Jessica Griffin

GIVE ONLINE



philorch.org/donate

MAIL YOUR GIFT TO:

The Philadelphia Orchestra
Annual Fund
300 South Broad Street
Philadelphia, PA 19102

Contact the Orchestra's Annual Fund office at
development@philorch.org or 215.893.3151.

Our team is available to assist you Monday through Friday, 9 AM–5 PM.



Annual Fund

Philanthropic support inspires and sustains *Your* Philadelphia Orchestra's work on stage, in our local communities, and around the world. We are proud to recognize our generous Annual Fund donors by name on this and subsequent pages. We extend our deepest gratitude to every donor, including those listed anonymously and at levels not included in this program.

For more information about donating to the Annual Fund at any level, please contact us at 215.893.3151 or development@philorch.org or visit philorch.org or visit philorch.org/donate.

Contributions listed were received between July 1, 2023, and March 18, 2025. Please contact us if your name has been omitted in error or if you would like to update your recognition name.

Artistic Council
\$500,000 and above
Estate of M.J. Fischer
Otto Haas Charitable Trust
Neal Krouse and Karl Fong
Leslie A. Miller and
Richard B. Worley
Constance and Sankey Williams
Wyncote Foundation
Anonymous

Artistic Council
\$125,000 to \$499,999
Elaine W. Camarda and
A. Morris Williams, Jr.
The CHG Charitable Trust
Dr. Alan R. Cohen and
Michele Langer
Constance and Michael Cone
Tatiana Copeland
Tobey and Mark Dichter
Edith R. Dixon*
Jerome L. and Thao Dodson
Dr. James F. Dougherty
In memory of
Gail and George Ehrlich
Susan and Jonas Ellenberg
Estate of Robert T. Foley
Estate of Dorothy Renc Gray
Osagie and Losenge Imasogie
Innisfree Foundation
Gretchen and M. Roy Jackson
James and Agnes Kim Foundation
Estate of Winifred Mayes
John H. McFadden and
Lisa D. Kabnick
Ralph and Beth Johnston Muller
Estate of Dr. Betty T. Richards
Caroline B. Rogers
Peter and Mari Shaw
Dr. and Mrs. Joseph B. Townsend
Estates of Dr. and Mrs. Robert Williams
Anonymous

Presenters Circle
\$75,000 to \$124,999
Veronica Atkins
Estate of Sherrin H. Baky-Nessler
Estate of Dr. Noel Cawley
Estate of Dr. Barbara Comins
Sarah Miller Coulson
Joseph and Marie Field
Dr. Brett B. Gutsche
Mrs. Penelope P. Harris
Robert Heim and Eileen Kennedy
Richard M. Klein
Estate of Howard Spodek

Presenters Circle
\$50,000 to \$74,999
Estate of Jean Bodine
Karen Dougherty Buchholz
Dr. and Mrs. Robert R. Corrato
Estate of Thomas and Floramace Force
Nina Henderson
Bennett Keiser and Joy Wilf Keiser
Marguerite and Gerry* Lenfest
Joseph M. Manko, in loving memory of Lynn Manko
Joe Neubauer and
Jeanette Lerman-Neubauer
Amlene Pappas
Mr. Charles Ryan
Salkind Family Foundation
Mr. Oscar Tang and
Dr. Agnes Hsu-Tang
Dr. Cecilia Segawa Seigle
Tannenbaum
Carol Tyler
Bin Zhang and Liqun Qian

Presenters Circle
\$25,000 to \$49,999
Janet M. Andereck
Donald E. Barb, Esq., and
the Rev. Bruce H. Davidson
Peter A. Benoliel* and Willo Carey
James and Micaela Brandau
Naomi* and Stephen Breman
Lois and Julian Brodsky
Judith Broudy
Mr. and Mrs. Christopher B. Chandor
Christos Coutifaris and
Deborah Driscoll
Mr. and Mrs. John Fry
L. Patrick Gage
Barbara and Jerome Glickman
Linda and David Glickstein
Juliet J. Goodfriend and
Marc R. Moreau
Julia A. Haller, M.D.
Nancy S. Halpern
Ed and Ellen Hanway
Kerry and Rod Henkels
Ann S. and Steven B. Hutton
Patricia and John Imbesi
Rachelle and Ronald Kaiserman
Mr. and Mrs. Chris Keith
Gay and Donald Kimelman
In honor of Katherine O. Leone
Mr. and Mrs. Bruce Leto
Chris and Jeffrey Libson
Sandy and David G. Marshall
Mrs. Catharine Maxey
Susan and Frank Mechura
Dr. and Mrs. John L. Neigh

Estates of Adolf and Geraldine Paier
 Amlene Pappas
 Claudio Pasquinelli and
 Kyong-Mi Chang
 Robert and Lynne Pollack
 Mr. and Mrs. Robert L. Pratter
 Red Moose Charitable Trust
 Jon and Karen Richter
 Lyn Ross
 Rubenstein Family Foundation
 Vincent N. and Lila Russo
 Allan Schimmel and Reid Reames*
 Kate Groark Shields
 Lee F. Shlifer
 Constance Smukler, Trustee,
 Smukler-Lasch Family Trust
 Joan N. Stern
 Mrs. Robin Wang and
 Dr. Wei-Wu He
 Elizabeth Wiegiers
 Mr. Arthur Wolk
 Zisman Family Foundation
 Anonymous

Presenters Circle

\$15,000 to \$24,999

Estate of Mark J. Bojanowski
 James and Doris Brogan
 Carol W. Buettger
 Joslyn G. Ewart
 Estate of John Farmakis
 Mr. and Mrs. Moses Feldman
 Drs. Peter and Pamela Freyd
 Ken and Sue Greathouse
 Peter Grove and Nancy Greene
 Joseph and Bette Hirsch
 Mr. Kevin King and
 Mrs. Susan West King
 Drs. Joan and Brook Lau
 Lurie Family Foundation
 Tom and Linda McCarthy
 Mr. and Mrs. Bruce McKittrick
 Mr. Ronald Mintz and
 Ms. Jessica Cahen
 Mitchell and Hilarie Morgan
 Estate of Ron North
 Jane G. Pepper
 Estate of Miss E. Irene Reymann
 Beth L. Rogers
 Dianne and Jeffrey Rotwitt
 Estate of Robert Schoenberg
 Estate of Harold and Emily Starr
 Mr. and Mrs. Sheldon Lee
 Thompson
 Mr. Wayne Titerence and
 Ms. Vicki Mechner
 Mr. and Mrs. Archbold D.
 van Beuren
 Jack and Ramona Vosbikian
 Dr. Bettyruth Walter
 Jennifer and Ralph Watts
 Steve and Mary Beth Young
 Anonymous (4)

Presenters Circle

\$10,000 to \$14,999

Dean S. Adler and
 Susanna Lachs Adler
 Charles Arnao and Rosemary Watt
 Barbara B. and Theodore R.
 Aronson
 Jim and Janet Averill
 Drs. Claudia and Richard Balderston
 Drs. Robert and Jean Belasco
 Jill and Sheldon Bonovitz
 Dr. and Mrs. Patrick J. Brennan
 Mr. and Mrs. Jonathan Broder
 Judy and Mark Brodsky
 Dr. Eugenio* and Giuliana Calabi
 John Cornell
 Joyce Creamer
 Richard and Patricia Cummines
 Mr.* and Mrs. Edward C. Dearden
 MaryAnn Edwards
 Audrey Escoll
 Alex J. Ettl Foundation
 Claudia and Richard Fischer
 Eph and Pat Fithian
 Ryan Fleur and Laura Banchero
 Mr. and Mrs. David M. Friedman
 Donald Goldsmith
 In memory of Rena and Morton C.
 Grad and John de Lancie
 Gnia Grossman and
 Christopher Murray
 Leon and Miriam Hamui
 Mr. and Mrs. Stephen Harris
 Hannah L. Henderson
 Terry and Ann Marie Horner
 Stockton Illoway and
 Mac K. Griswold
 Andrew Jacobson and
 Carol Overvold
 Erika James
 Estate of Joel and Marjorie Jensen
 Mrs. Carol Kaganov
 Toba and Lawrence Kerson
 Lyn Kratz and Pamela French
 Dr. Peter Langmuir and
 Dr. Colette Desrochers
 Carol and Howard* Lidz
 Nestor Llorente and Don Jones
 Sally and Tod MacKenzie
 Nicholas Maiale
 Mrs. Miriam Mandell
 Dr. Ann Elizabeth Mayer
 Mr. and Mrs. Bruce McKittrick
 Missy and Bob McQuiston
 Dr. Jill Mortensen
 Yannick N  zet-S  guin and
 Pierre Tourville
 Bethanne and Patrick Nolan
 Miriam Ort and Lawrence Hirsch
 Mrs. Sarah Peterson
 Mrs. Vivian W. Piasecki*
 Dr. and Mrs. Joel and Bobbie Porter
 Susan and David Rattner
 Diane Schneider
 Xiaomei Shao

Edward and Shelley Sigman
 Kathleen and Roger Smith
 Richard and Amanda Smoot
 Mary Ann Stehr
 Mr. and Mrs. William Stone
 Walter and Alice Strine, Esqs.
 Charles and Suzanne Valutas
 Thomas and Patricia Vernon
 Deneen and Chris Vojta
 Mary E. Webb
 Carol A. Westfall
 Martin Zeldin and Bill Brinkman
 James W. and Debora C. Zug
 Anonymous (3)

Ambassadors Circle

\$5,000 to \$9,999

Mrs. Neysa Adams
 John R. Alchin and Hal Marryatt
 Peter J. Allen
 Dr. James R. Anderson
 Larry and Dr. Marcia Arem
 Drs. Janine and Barry Arkles
 Mr. Leonard L. Aulenbach II* and
 Mr. Paul H. McKelvie
 Lynn Axelroth and
 Cricket Handsaker
 The Albert W. Bader Foundation
 Richard and Jane Baron
 Ms. Carol A. Benner
 Jeff Benoliel and Amy Branch
 John D. Benson, Esq.
 M. Therese and Barry Bentley
 Andrea Biondo and
 Kenneth Hartzell
 Allen D. Black and
 R. Randolph Apgar
 Judy Blumstein
 Alfred Anthony Brown and Hai-Ye Ni
 Dr. and Mrs. I. Stephen Brown
 Mr. and Mrs. James M. Buck III
 Estate of James Bittenwieser
 Malcolm and Carla Cain
 Drew Camarda
 Jennifer and David Cardy
 Alice Chen-Plotkin and
 Joshua Plotkin
 Kathleen and Nicholas Chimicles
 Celia Mendes Chumaceiro
 The Clarke Family Fund
 Earl and Margaret Clime
 Mrs. Marlynne Clothier
 Dr. Robert Cody
 Stephen Cohen and John McNett
 Ruth M. and Tristram* C. Colket, Jr.
 Dr. Rosemary Cook
 Peggy Cooke
 Kenneth and Nancy Davis
 Stephen and Rhoda Davis
 Evelyn S.* and Rodney D. Day III
 Tanya Derksen
 Mr.* and Mrs. Willem K. Dikland
 Dr. and Ms. James Doghranji
 Ellason Downs Perpetual
 Charitable Trust

\$5,000 to \$9,999 cont.

Dr. Pamela Edmonds and
Mr. David Chianese
Ms. Carol S. Eicher
Drs. Bruce and Toby* Eisenstein
Andrew E. Faust and
Ann Russavage-Faust
Mary Felley
Erika Aaron and Marc Fliegelman
Joel Frank
John R. and Karen S. Fulton III
John and Beth Gamel
The Gant Family Foundation
Patsy and Ed Garno
Jim and Kay Gately
Howard and Norah Goldfine
Mary L. Goldman
David and Bonnie Goldmann
Peter G. Gould and Robin M. Potter
Charles and Alison Graham
Vivian and Mark Greenberg
Lyn and Harry Groome
Fred and Michelle Harde
Diana and Robert Harding
Katherine Hatton and
Richard Bilotti
Martin and Cynthia Heckscher
Mr. and Mrs. Christopher Henkels,
in memory of Paul M. Henkels
Marybeth Henry
Ms. Rhoda K. Herrold, In memory
of Deenie and Yale Evelev
Maria Hoek-Smit
Richard H. Holzer
Memorial Foundation
Eric and Lenora Hume
Ms. Lisa R. Jacobs
Mr. and Mrs. Joseph Jacovini
Lori Julian
Arthur M. Kaplan and
R. Duane Perry
Leroy E. Kean Family Foundation
Dr. Stephanie and Mr. Andrew Kirk
Ms. Gabrielle Kissling
Dr. and Mrs. Anton J. Kleiner
Mr. and Mrs. Robert C. Kline
Dr. Mel Kohn
Dr. Leona Laskin
Jeffrey Leonard
William Lake Leonard
Jeff Lewis and Mary Ann Rossi
William A. Loeb*
Mr. James P. MacElderry* and
Ms. Marilyn S. Fishman
Drs. Leon and Elsa Malmud
Mary L.C. McAdoo*
Dr. and Mrs. George McCarthy
Susan and Graham McDonald
Mr. and Mrs. James M. McGrath
Robert and Claire McLear
Mr. and Mrs. Charles Meacham
Madelyn Mignatti
Mr. Mladen Milic and
Dr. Barbara Wolf
Mr. and Mrs. Stephen Miller

Mr. and Mrs. H. Laddie Montague, Jr.
Mr. and Mrs. Rodman W. Moorhead III
Mr. and Mrs. David J. Morgan
Mrs. Robert Morris
Peter and Martha Morse
Ms. Susan Mucciarone and
Mr. David Moore
Mr. and Mrs. Benjamin R. Neilson
Dick and Mimi Nenko
Arthur E. Newbold IV
Marie O'Donnell and Bruce Satalof
Mr. and Mrs. Richard Palmer
Dr. and Mrs. Lee D. Peachey
Lili Perski
Marjorie M. and Irwin Nat Pincus
Fund
Susan D. Ravenscroft
Dr. Carol A. Raviola
David Rhody
Maria and Eric Rieders
Mr.* and Mrs. Richard Rizzo
Sevgi B. Rodan, Ph.D.
Marney Roia
Mrs. Willa Rosenbloom
Linda S. Rothermel
Dr. Marta Rozans and
Prof. Ilan Peleg
Mr. and Mrs. Charles Schelke
Mrs. Carole L. Schultz
Valerie and Will Schwartz
Fredda L. Segal
Dr. and Mrs. Hass Shafia
Christine J. Shamborsky
Mollie and Frank Slattery
Samuel and Rosanne Spear
Dr. Mary K. Stom and
Ms. Dru E. Hammell
Cynthia Tehan and Ed Dougherty
Ms. Nancy L. Tindall
Richard and Carolyn Veith
The Vert Charitable Trust
Maria Parisi Vickers
Nina Robinson Vitov
George Walker
Dr. R.J. Wallner
Penelope and Thomas Watkins
Rebecca Wells and John Tobias
Alan and Leni Windle
Stephen Zeller
Anne Zetterberg
Anonymous (11)

Ambassadors Circle**\$3,500 to \$4,999**

Vijay and Susan Aggarwal
Gary and Mary Ammon
Dr. Ronald and Mrs. Catherine
Anderson
Mary Jo Ashenfelter and
Thomas S. Heckman
Myrna and Howard* Asher
Mr. and Mrs. James R. Bacon
Sarah Batchelor and Kirk Schneider
Carol Beam
Isabelle Benton and Aileen White

Ms. Donna Brennan and
Mr. James Bergey
Jan R. Birsch
Mr. and Mrs. Stephen Bleyer
Samuel A. Bobrow and
Maxine Blum
The Bohan and Fox Family
Ira Brind and Stacey Spector
Kristine Christensen
Barbara R. Cobb for the
Hamilton Family Foundation
Ms. Eileen Courtney
Ady L. Djerassi, M.D., and
Robert Golub, M.D.
Ray Dombroski and
Colleen DeMorat
Henry and Katherine Donner
Mr. Jay M. Donner
Dr. Andrew F. Drake
Barbara Eberlein and Jerry Wind
Mr. and Mrs. Spencer Ervin, Jr.
Helen and Phillip Escaravage
David Fenske and Rita Naremore
Nina Maria Fite
Debbie and Bob Fleischman
Ms. Jane Foster and
Mr. Arthur Willson
Allen R. and Judy Brick Freedman
Mr. and Mrs. Lawrence Fridkis
Mr. and Mrs. Stephen J. Garza
Robert Gelsner
Anna Marie and Michael Gewirtz
Judith Ginsberg
Eduardo Glandt and George Ritchie
Joseph and Jane Goldblum
Robert Graff
Mr. Charles Head, Jr., and
Mr. John Faggotti
Archibald C. Hewes
Dr. and Mrs. Leonid Hrebien
Mr. and Mrs. Melvin Jones
Susan E. Kane
Juliette Kang and
Thomas E. Kraines
Donald and Dorothy Kardon
Dr. Maureen Kelly
Kenneth Kloth and
Eve Biskind Kloth
Mrs. Beth Ann Wahl Kolpen and
Mr. Jack Kolpen
Shira Kramer and Leon Josowitz
Sanford and Carol Levy
Mrs. H. Gates Lloyd*
Robert Logemann
Dr. and Mrs. Michael B. Love
Robert and Lynn V.D. Luft
Joseph Manko, Jr., and
Jennifer Porges
Denise McCleary and
Paul von Behren
Mr. and Mrs. Joseph J. McLaughlin, Jr.
Howard and Clare McMorris
Russell L. McTague
Michael and Anna Minkovich
Margarita Montanaro

Mr. Edward A. Montgomery, Jr.
 Mr. and Mrs. Albert B. Murphy III
 Dr. and Mrs. A.H. Nishikawa
 Mr. and Mrs. Stuart Ockman
 Ellen J. Odoner and
 Edward W. Kerson
 Mr. Frederick Oster and
 Ms. Catherine Jacobs
 Linda and David Paskin
 Barbara L., Phillips
 Peter and Susan Porcino
 Dr. Elizabeth and
 Mr. Hershel Richman
 Pamela and Gresham Riley
 Dr. Louis and Mrs. Val Rossman
 Ana V. Diez Roux and Jose Tapia
 Harold and Marianne Sacks
 John Salvesson
 Marilyn C. Sanborne and
 Richard J. Labowskie
 William and Klare Scarborough
 Shawmeron and John-Paul Seal
 David Seidman
 Mr. and Mrs. Robert W. Seminack
 Dr. M. Lana Sheer, in memory of
 Dr. J. Peter Jesson
 Janet A. Simon and Georg U. Simon
 Joseph Sinkus and
 Christopher Labonte
 Mr. and Mrs. Robert L. Stevens
 Stacy Stone and Stephen McMillan
 John and Sandra Stouffer
 Mr. Brian A. Stumm
 Dr. Norman L. Sykes
 Nancy and Bruce Urbschat
 Dr. Peter J. Vasquez
 Mr. and Mrs. Luciano Virgili
 Mr. and Mrs. Michael Vogelmann
 Peggy Wachs
 Daniel V. Walls
 Ross and Mary Lou Webber
 Julie D. Williams
 Ursule Phaeton Yates
 Mr. and Mrs. Harold L. Yoh III
 Walter Zanchuk
 Anonymous in memory of
 Jan Popper
 Anonymous (4)

Friends Circle

\$2,500 to \$3,499

Maury and Sally Alsher
 Theodore H. Ashford
 William and Sylvia Barone
 Joel D. Beaver
 Cathy and Saul Behar
 Drs. Bruce and Carole Bogdanoff
 Mrs. Judith M. Bradley
 Richard A. Brand
 Estate of Elia Buck
 Mrs. Linda Burke
 Drs. Melvin* and Gloria Chisum
 Jeffrey Cooper and Nancy Klaus
 Selden Cooper and Paige Edwards
 Alice B. Cullen

Karen and John Cunningham
 Stacy Maria Dutton and
 Charles McMahon
 Dr. and Mrs. William L. Elkins
 Robert N. and Doris D. Fanelli
 Paul and Judith Farber
 Mr. and Mrs. William W. Fox, Jr.
 Michael and Vivian Francesco
 Ellen W. Freeman
 Charles and Judith Freyer
 Dr. Deborah Gaspar and
 Mr. Mark Gaspar
 Ms. Phyllis S. Gitlin
 Susan Kohn Gleeksman
 Joe and Madeleine Glossberg
 Judith Guise
 Hope Heaney
 Mr. and Mrs. James R. Holt, Jr.
 Mark and Sally Hurwitz
 Eva R. Jackson
 Juliette Kang and
 Thomas E. Kraines
 Dr. Richard Kent
 Denise and Robert Keyser
 David and Jane Kim
 Mrs. Sylvia Kreithen
 Elena and Frederick Kyle
 Arthur Lazanoff
 Sylvia and Norman Lieberman
 Jay Lippincott
 Drs. W.B. and Sarah S. Long
 Lawrence and Nancy Ludgus
 Mr. and Mrs. Robert Lukens
 Elizabeth M. Mahoney
 Dr. Bernard A. Mason and
 Jane R. Mason
 Dwight and Christina McCawley
 Mr. and Mrs. James W. McLane
 Elizabeth McLean
 Virginia Montgomery
 Dr. Margaret Motl
 Dr. and Mrs. R. Barrett Noone
 Kay and Jerry O'Grady
 Mr. and Mrs. Lanny R. Patten
 Mr. and Mrs. William H. Pentz
 Judy and Jim Pohlman
 Ms. Nancy Pontone
 Mr. and Mrs. Alfred Rauch, Jr.
 Allan Rayfield
 David Richman and Janet Perry
 Gretchen and Jay Riley
 John and Claire Rodgers
 Ms. Ann Rosewater and
 Mr. Robert Kronley
 Mr. and Mrs. Mark E. Rubenstein
 The Rev. Canon Dr. Alan K. Salmon
 Joyce Seewald Sando
 Catherine and Stephan Schifter
 Howard J. Sedran and
 Martha Levine
 Tom Seaman and Kay Stulgross
 John J. Shaw and Mary Patton
 Ms. Katharine Sokoloff and
 William B. McLaughlin III

Dr. Christina A. Stasiuk and
 Mr. George M. Farion
 Dr. Alan E. Tasoff and
 Jacalyn Shelley-Tasoff
 Laurie Wagman in memory of
 Irvin J. Borowsky
 Mr. and Mrs. Robert B. White, Jr.
 Mr. and Mrs.* David R.
 Wilmerding, Jr.
 Barbara Duby Wilson
 Earl and Jackie Wolf
 Anne Jeffrey Wright
 Sherley Young
 Benjamin E. Zuckerman and
 Marian Robinson
 John Zurlo and Margaret Kreher
 Anonymous

We are proud to recognize the following musicians, retired musicians, and staff who have generously contributed to the Annual Fund.

Clara Biava
 Dayvd Booth and Carlos Perez*
 Colleen Coffey-Snyder
 Joseph H. Conyers
 Julie and Neil* Courtney
 Tanya Derksen
 Helen and Phillip Escaravage
 Ryan Fleur and Laura Banchemo
 Andrea Gartner and Lee Clements
 Anna Marie and Michael Gewirtz
 Barbara S. Govatos
 Jennifer Pratt Johnson and
 Fred Johnson
 Juliette Kang and
 Thomas E. Kraines
 Ruth Kasow
 Neva and Matthew Kelly
 Herold R. Klein
 Sophia Konopelsky
 Marjorie and Nolan* Miller
 Margarita Montanaro
 Kathleen Moran and
 Nicholas Smith
 Yannick Nézet-Séguin and
 Pierre Tourville
 Hai-Ye Ni and
 Alfred Anthony Brown
 Samantha Noll
 Hirono Oka
 Doris Parent
 Leslie M. Patterson-Tyler
 Henry and Yumi Scott
 Joseph Sinkus and
 Christopher Labonte
 Tubas for Good, Inc.,
 Carol Jantsch,
 President and Founder
 Anonymous (2)

*Deceased

Institutional Support

Generous support from corporations, foundations, and government agencies continues to sustain The Philadelphia Orchestra each year. These vital partnerships help fund performances, education and outreach programs, and a variety of innovative projects. We are proud to acknowledge our current institutional donors.

For more information about institutional support for The Philadelphia Orchestra, please contact Ruth Auslander, managing director of institutional giving, at 215.790.5829 or rauslander@kimmelcenter.org.

Contributions listed were received between September 1, 2023, and March 18, 2025. Please contact us if your name has been omitted in error or if you would like to update your recognition name.

The Philadelphia Orchestra is eligible for contributions through the EITC (Educational Improvement Tax Credit) program of the Commonwealth of Pennsylvania.

\$500,000 and above

City of Philadelphia
Department of Community and Economic Development
Ford Foundation
The Hess Foundation
The Knight Foundation
William Penn Foundation
The Pew Charitable Trusts
The Presser Foundation
Wyncote Foundation

\$100,000 to \$499,999

Dr. Robert C. and Veronica Atkins Foundation
Bank of China
Bells Grocery Stores
Casamigos Tequila
CHG Charitable Trust

Jessie Ball duPont Fund
The Hearst Foundation
Independence Blue Cross
Merck & Co. Incorporated
MKM Foundation
National Endowment for the Arts
PECO
Pennsylvania Emergency Management Agency
The Pew Center for Arts and Heritage
PNC Arts Alive
TD Bank
U.S. Department of State

\$50,000 to \$99,999

Paul M. Angell Family Foundation
China National Tourist Office New York Chubb
Eagles Autism Foundation
KPK Development Co. LP
National Endowment for the Arts
US-China Cultural Institute
Verizon Pennsylvania
Anonymous

\$25,000 to \$49,999

Abington Neurological Associates
Brotherston Homecare, Inc.
The Chamber of Commerce for Greater Philadelphia
Comcast NBCUniversal
Faegre Drinker Biddle & Reath LLP
Amy P. Goldman Foundation
Gray Charitable Trust
Hamilton Family Charitable Trust
The Christian Humann Foundation
Kind Insurance
Megawholesale
PHLCVB
Raynier Institute & Foundation
Rhubarb Hospitality Collection

\$15,000 to \$24,999

Louis N. Cassett Foundation
Julius and Ray Charlestein Foundation in memory of Malvina and Morton Charlestein
Coppola Chardonnay
Cozen O'Connor
Drexel University
The Anne M. and Philip H. Glatfelter III Family Foundation
The Hassel Foundation
Independence Foundation
Josh Cabernet
The Blanche and Irving Laurie Foundation

Lincoln Financial Foundation
JPMorgan Chase & Co.
Philadelphia International Airport
SpotHero
Tito's Handmade Vodka
Universal Health Services, Inc.
White and Williams

\$10,000 to \$14,999

Action Karate
Ardmore Toyota
Chameleon Cloud Service
Elliot's Vending Company
Elliott-Lewis Corporation
JKG Florida Business Corp.
Katznelson Associates LP
Laudenbach Periodontics and Dental Implants
Law Office of Ana Ferriera
M&T Charitable Foundation
The McLean Contributionship
NUTRL
One Source Reps
Origlio Beverage
Pennsylvania Council on the Arts
Power Marketing Group
Review Committee
The H. Glenn Sample, Jr., M.D. Memorial Trust through the PNC Charitable Trusts Grant
Stateside Vodka
Subbio Center for Plastic Surgery
Team Clean

\$5,000 to \$9,999

Corinne R. and Henry Bower Memorial Trust
Dorothy V. Cassard Fund of the Philadelphia Foundation
The Connolly Foundation
Dolfinger-McMahon Foundation
Four Seasons Hotel Philadelphia at Comcast Center
The Gitlin Family Foundation
Christian R. and Mary F. Lindback Foundation
The McCausland Foundation
New Music USA
Leo Niessen, Jr., Charitable Trust
Ninja Transfers, LLC
Rush Order Tees
Rutgers University—Camden
TN Ward Company Builders
WSFS Bank
Wyatt Elevator Company



Philadelphia Orchestra concerts are supported by grants from the Annenberg Foundation; the Commonwealth of Pennsylvania, Department of Community and Economic Development; the National Endowment for the Arts; and the Pennsylvania Council on the Arts, a state agency funded by the Commonwealth of Pennsylvania.

The Volunteer Committees for The Philadelphia Orchestra

The Volunteer Committees for The Philadelphia Orchestra are dedicated to supporting the Orchestra through audience development, educational programs, fundraising, community relations, and special events. The Committees were first formed in 1904 and have the distinction of being the oldest auxiliary volunteer organization associated with an orchestra in the United States. We are profoundly grateful for the Volunteers' leadership and support throughout the years.

For more information about the Volunteer Committees for The Philadelphia Orchestra, please contact Samantha Noll, senior manager of donor and volunteer relations, at 215.893.1956 or snoll@philorch.org.

List complete as of March 18, 2025

Executive Committee Officers

Richelle Rabenou, President
Sara Cerato, Immediate Past President
Deborah Ledley, Vice President
Mrs. Diane Larzelere, Treasurer
Sheila Cox, Secretary

Governing Board Chairs

Central: Jennier Porges
Main Line: Josephine Rees
New Jersey: Mrs. Diane Larzelere
Rittenhouse Square: Marlena Kleit
and Fran Schwartz
Starlight Circle: Mrs. Anna Minkovich

Standing Committee Chairs

Annual Giving: Nancy Galloway
Education: Deborah Ledley*
Marketing: Kelsey Larzelere
Special Functions: Jennifer Porges
Volunteer Archives: Elizabeth A. Crowell

Volunteer Committee Members

Jill Acker
Dennis Adams
Dr. Susan C. Aldridge
Pam Alles
Barbara A. Allea
Mrs. Betsy Anderson
Dr. Marilyn H. Appel
Mrs. Daniel G. Bancroft
Mrs. Mercer B. Barrows
Mrs. Thomas E. Beach
Mrs. H. Binney Beale
Ms. Sandra Blumberg Beatty
Mrs. Nancy Belber
Ms. Susan Berrigan
Charlotte H. Biddle
Mrs. Thomas H. Bliss
Ann Young Bloom
Mrs. Peter Bodenheimer
Mrs. Eugene T. Borish, Jr.
Lois Boyce
Judith Bradley
Sibby Brasler
Stephen Breman
Mrs. Leанore Brookman
Judith Broudy
Ms. Carol Melman Brown
Mrs. Roland K. Bullard II
Mrs. Howard Butcher IV
Mrs. John P. Butler III
Mrs. Donald F. Cafiero
Mrs. Alfred M. Campbell III
Beverly Caplan-Freeman
Nicole A. Cashman
Mrs. Thomas A.V. Cassel
Mrs. Kristine Christensen
DeAnn P. Clancy
Rebecca Clement
Marsha Cohen
Peggy Cooke
Sarah Miller Coulson
Mrs. James E. Crutchfield
Alice B. Cullen
Karen Cunningham
Chris D'Ascenzo
Mrs. J. David Davis
James F. Davis*
Mrs. Gerard de Lissier
Colleen DeMorat
Mimi Dimeling
Katherine Donner
Mrs. Virginia Dowd
Mrs. John G. Drosdick
Roberta Epstein*
Mrs. William H. Eyre, Jr.
Mrs. Charles B. Fancher

Mrs. C. Richard Farmer
Kathleen Fitzgerald
Mrs. Timothy E. Foster
Mrs. Richard Freed
Katherine Garber
Ms. Janine Gardner
Judi Garst
Ms. Karen Gelfand
Nancy J. Gellman
Robert Gelscher
Mrs. Kimberly Gerson
Mrs. Micki Ginsberg
Mrs. Jean Givney
Judy Glick
Dr. Janice Taylor Gordon
Dr. Thelma B. Gosfield
Mrs. Richard B. Gould
Carole H. Gravano
Grete Greenacre
Ms. Nancy V. Gulick
Kate Hall
Noel Butcher Hanley
Fred Harde
Michelle Harde*
Mrs. John S.C. Harvey III
Mrs. Jane M. Hastings
Mrs. Patricia Heidler
Marybeth Henry
Mrs. Frances Herr
Mrs. Robert B. Hobbs, Jr.
Joan R. Holmes
Mrs. Stephen R. Holstad
Eric Hume
Lenora Hume
Ms. Adrienne Jacoby
Yardly R. Jenkins
Karen Jones
Mrs. Mary Anne Dutt Justice
Mrs. Wilma C. Katz
Ms. Phyllis Kauffman
Marie Kenkelen
Kris Kent
Marlena Robinson Kleit
Liz Knudsen*
Ms. Ellen G. Kopeland
Mrs. Bernice J. Koplin
Laura Bender Koropecy
Mrs. Anthony Lame
Mrs. MaryAnn Landmesser
Molly Lawrence
Matthew Ledley*
Mrs. Margery P. Lee
Sheila Leith
Mrs. Dana Thompson Lerch
Mrs. Roy Lerman
Anita Leto

Mrs. Bruce Leto
 Mrs. Stephen Levin
 Mrs. Rosemary Livingston
 Miss Phoebe Loh
 Carol Love, M.D.
 Mrs. Robert S. Lovett II
 Rochelle Mogarick
 Elizabeth Mahoney
 Joseph Manko, Sr.
 Sandy Marshall
 Linda Massey
 Mary MacGregor Mather
 Mrs. James McAdam
 Susan Mcchesney
 Mrs. Stella McSparran
 Ms. Peg Mertz
 Mrs. Barbara G. Miller
 Mrs. Keiko Miller
 Leslie A. Miller
 Mrs. Philippus Miller, Jr.
 Michael Minkovich
 Mrs. Robert F. Morris, Jr.
 Ingrid Morsman
 Ms. Cathy Moss*
 Linda Mui
 Mrs. J. Brien Murphy
 Mrs. Albert B. Murphy III
 Carol Neiman*
 Mrs. John J. Nesbitt III
 Mrs. Patricia Ann Nogar
 Mrs. R. Barrett Noone
 Terry Norton-Wright
 Mrs. Wilber W. Oaks, Jr.
 Kay O'Grady
 Diane Oliva
 Mrs. Mimi O'Malley

Mrs. Eleanor Oxman*
 Mrs. Mary S. Page
 Alice Pakman*
 Mrs. Regina H. Pakradooni
 Mrs. Sandra Pfaff
 Mrs. John W. Piasecki
 Linda Pizzi*
 Elizabeth Pontillo
 Mrs. Malcolm D. Pryor
 Michelle Fella Przybylowski*
 Mr. Kameron Rabenou
 Mrs. Ellen Ragone
 Jill Raich*
 Mrs. Alfred Rauch, Jr.
 Kate Brady Rauscher
 Mrs. A. Gerald Renthall
 Mrs. J. Todd Robinette
 Deborah L. Robinson
 Caroline B. Rogers
 Mrs. Randy S. Ronning
 Dr. Lucy B. Rorke-Adams
 Mrs. Dianne Rotwitt
 Mrs. John E. Royer, Jr.
 Mrs. Thomas I. Rozanski
 Lynn Salvo
 Joyce Seewald Sando
 Mrs. Harold F. Scattergood, Jr.
 Mrs. Michael P. Schwartz
 Mrs. Gay Scott
 Faye Senneca
 Linda A. Serotta
 Carol C. Sherman
 Ms. Diane Silberman
 Ms. Irina Sipe
 Marina Smirnova
 Mrs. Carol Smith

Ann Sorgenti
 Carol Spinelli
 Mrs. Phyllis St. Onge
 Joyce Stein
 Lois Stick*
 Mrs. Kathleen Stone
 Stacy Stone
 Dr. Judith Sills Swartz
 Roberta R. Tanenbaum
 Ms. Faith Tarangelo
 Ms. Mary Tattersfield
 Barbara Taylor
 Kathryn E. Tusler*
 Mrs. Hope Ulrich
 Mrs. Annegret Voparil
 Mrs. Ramona Vosbikian
 Mrs. Jeffrey Warzel
 Mrs. Nancy Weiss
 Janine Weller
 Mrs. Henry Wendt
 Dr. Erlis Wickersham
 Mrs. Brooke N. Williams
 Julie D. Williams
 Mr. Alan Windle
 Ms. Marian Wissman
 Lisa Yakulis
 Bonnie Young
 Mrs. Gilbert G. Young
 Mrs. V. Scott Zelov
 Anonymous (5)

*Denotes current members of the
 Philadelphia Orchestra Docent
 Program

Endowment

We proudly recognize our generous donors to The Philadelphia Orchestra's endowment. Their leadership gifts support the Orchestra and its programs in perpetuity, helping to ensure the legacy of the ensemble for the next generation.

To learn how you and your family can be permanently associated with The Philadelphia Orchestra through an endowment gift, please contact Helen Radenkovic, managing director of philanthropic engagement, at 215.893.1819 or hradenkovic@philorch.org.

List complete as of March 18, 2025

Transformational Gifts

The Annenberg Foundation
Silicon Valley Community Foundation

\$10,000,000

Leslie A. Miller and
Richard B. Worley
The Neubauer Family Foundation

\$1,000,000 to \$9,999,999

The Acadia Fund
Peter A. Benoliel* and Willo Carey
Mr.* and Mrs.* J. Mahlon Buck, Jr.
Estate of Anne M. Buxton
Elaine Woo Camarda and
A. Morris Williams, Jr.
Sarah and Frank* Coulson
Mark S. and Tobey Dichter
Dr. James F. Dougherty
Estate of Dwight V. Dowley
Samuel S. Fels Fund
Joseph and Marie Field
Carole and Emilio* Gravagno
Joanne T. Greenspun*
Otto Haas Charitable Trust
Phoebe W. Haas Charitable
Trust "A" as recommended by
Carole Haas Gravagno
Phoebe W. Haas Charitable
Trust "B"
Robert Heim and Eileen Kennedy
Hannah L. and J. Welles* Henderson
Mr. Paul M.* and Mrs. Barbara B.
Henkels
Hess Foundation
Osagie and Losenge Imasogie
The Kaiserman Family
The James and Agnes Kim
Foundation
Dr. Richard M. Klein
Drs. Bong and Mi-Wha* Lee
The Lenfest Foundation
Sandra and David Marshall
Robert E. Mortensen*
Ralph and Beth Johnston Muller
Caroline B. Rogers
Estate of Mary R. Romig-DeYoung
Constance and Joseph* Smukler
Estate of Edwin E. Tuttle
Raymond H.* and Joanne T. Welsh
Constance H. and Sankey Williams
Ruth W.* and A. Morris Williams, Jr.
Richard B. Worley Tribute Fund
Zisman Family Foundation
Anonymous (3)

\$500,000 to \$999,999

Lois G. and Julian A. Brodsky
Foundation
J. Alexis* and Patricia M.* Burland
T. Norwood* and Doreene* Collins
Evelyn S.* and Rodney D. Day III
Mrs. F. Eugene Dixon, Jr.*
The Horace W. Goldsmith
Foundation
Gray Charitable Trust
The Hamilton Family Foundation
Mr. and Mrs. John C. Imbesi
Orton P.* and Noël* Jackson
Billy Joel Fund for Music Education
Peter M. Joseph* and
Susan Rittenhouse Joseph*
Christian R. and Mary F. Lindback
Foundation
Estate of Katharine S. Matthews
Vivian W. Piasecki*
Lyn and George* Ross
Gary and Ruthanne Schlarbaum
Scott and Cynthia Schumacker
Charlotte and Bob Watts
Anonymous (3)

\$250,000 to \$499,999

Mr. and Mrs. James M. Buck III
Peter Buttenwieser* and
Terry Marek
Ruth M. and Tristram C.* Colket, Jr.
Michael and Constance Cone
Kenneth Conners*
Gov.* and Mrs. Pierre S. du Pont
L. Patrick Gage
Toni and Bob Garrison
Ed and Ellen Hanway
Mrs. Winnifred Howard*
Mr. and Mrs. Berton E. Korman
William A. Loeb*
Mr.* and Mrs. A. Bruce Mainwaring
Winifred Mayes*
Estate of Joseph F. McCrindle
Mrs. J. Maxwell Moran*
Mitchell and Hilarie Morgan
Wendy and Derek Pew Foundation
Robert and Lynne Pollack
Lorraine* and David* Popowich
Mrs. Eleanor K. Read*
Ronald* and Marcia Rubin
Peter and Mari Shaw
Mr. and Mrs. Frank P. Slattery, Jr.
Ann and Harold* Sorgenti
Mr.* and Mrs. Bernard Spain
Mr. and Mrs. Wilson H. Taylor
Donors to the Allison Vulgamore
Legacy Endowment Fund
Anonymous (3)

\$100,000 to \$249,999

Mr. and Mrs.* Leonard Abramson
 Lorraine and Ben* Alexander
 Mr. and Mrs. Sid R. Bass
 Donna and Jon Boscia
 Mr. Theodore A. Burtis*
 Donald R. Caldwell
 William B.* and Elizabeth*
 Chamberlin
 Catherine R. and Anthony A. Clifton
 Marie* and Peter* Dooner
 Michael and Joan Emmi
 Peter and Catherine Ernster
 The Moses Feldman Family
 Foundation
 Dr. Betty Gottlieb*
 The Frederick and Colette B.
 Holding Charitable Fund
 Hirschberg-Goodfriend Fund
 established by Juliet J. Goodfriend
 Lynn and Tony* Hitschler
 David and Gale Hoffman
 Estate of Howard Hornstein
 The Hovey Foundation
 Joseph and Ann Jacovini
 Estate of Jane Kesson
 Joseph K.* and Bernice J. Koplin
 Neal W. Krouse
 Elena and Frederick Kyle
 Joanna M. Lewis
 Lomax Family Foundation
 Trust of Helen T. Madeira
 Joseph and Lynn* Manko
 Donors to the Lynn K. Manko
 Volunteer Endowment Fund
 Gene and Linda Massey
 The McCausland Foundation
 Stephanie and Michael Naidoff
 Jeffrey P. Orleans
 Estates of Mr. and Mrs. Eugene
 Ormandy
 Francis H. Rasmus
 Harold* and Frances* Rosenbluth
 Dr. Harry Rosenthal
 Frank Joseph Saul and
 Joseph Donald O'Keefe
 Endowment
 Christa and Calvin Schmidt
 Mr.* and Mrs.* John J.F. Sherrerd
 Richard and Amanda Smoot
 John and Sandra Stouffer
 Sunoco
 Mr. and Mrs. Leonard Sylk
 Robbi and Bruce Toll
 Mrs. Joseph B. Townsend*
 Mr. and Mrs. Archbold D.
 van Beuren
 The Wahl Endowment Fund for
 Music Education, established by
 Beth Ann Wahl
 James W. and Debora C. Zug
 Anonymous (4)

\$50,000 to \$99,999

Estate of Phyllis H. Bernstein
 Mr. Frank Boni and
 Mrs. Julia Ann Gehman*
 Richard P. Brown, Jr.*
 Mr. and Mrs. William C. Buck
 Mr. and Mrs. Roland K. Bullard II
 John* and Helen* Christy
 D. Walter Cohen* and Family
 Stacy Maria Dutton
 Mrs. William Gerstley II*
 Deborah E. Glass
 Martin A. and Cynthia P. Heckscher
 Richard B. Kent, M.D.
 Ken and Molly Lawrence
 Doris and Joseph Levine
 Mrs. Elsie H. Lisovitch*
 The Malmud-Kravitz Foundation/
 The Henrietta Varbalow Kravitz
 Fund
 John H. McFadden and
 Lisa D. Kabnick
 Frances C. Middleton*
 The Helen Sewall Minton
 Memorial Fund
 Janneke Seton Neilson*
 Mr. and Mrs. Jeremiah O'Grady
 Louise and Alan* Reed
 Mr.* and Mrs. Norman P. Robinson
 Dr. and Mrs. Francis Schumann
 Carol C. Sherman
 Mr. Oliver I. Shoemaker*
 The Sidewater Family Foundation
 Mr.* and Mrs.* Lewis S. Somers III
 Joseph and Joyce Stein—
 The Philibosian Foundation
 Karen and Shel Thompson
 James and Wendy Undercoffer
 Mrs. Francis L. Van Dusen*
 Jack and Ramona Vosbikian
 Anonymous (2)

\$25,000 to \$49,999

The Reba Bacharach Trust
 Helen and Jack* Bershad
 Stephen Breman
 David E. Brinson*
 Estate of Harold W. Brown
 In memory of Richard P. Brown
 Kathleen "Kit" Cafaro
 Mr. Joseph L. Castle*
 Cordelia E. Clement
 Don* and Viki Denny
 Charley* and Rogie Dickey
 In memory of David P. Eastburn
 Mr. David B. Ford
 Arthur and Joanne B. Frank
 Charles* and Beatriz Furr
 The Eugene Garfield Foundation
 Peter G. Gould and
 Robin M. Potter
 Mr. and Mrs.* J. Barton Harrison
 Joseph Kluger and Susan Lewis

In memory of John B. Leake
 William Lake Leonard
 Mrs. Anna Hayward Lisle*
 Mr. and Mrs. David S. Loeb, Jr.
 Dr.* and Mrs.* Francis R. Manlove
 Charles and Etta Nissman
 R. Steward Rauch*
 Mr.* and Mrs. Richard Ravenscroft
 Lois and Gerald Renthal
 Dr. and Mrs. Yale Richmond
 Robert and Caro Rock
 The Rubenstein Foundation
 Mr.* and Mrs. Samuel J. Savitz
 Mr. Nathan Snader*
 Mr. and Mrs. Robert L. Stevens
 Harue and Gaisi Takeuti
 Memorial Fund
 Bradford Wm. Voigt
 Allison Vulgamore
 Mary E. Webb
 Elizabeth C. Wiegiers
 Richard C. Woodhams and
 Kiyoko Takeuti
 Anonymous (5)

*Deceased

Academy of Music

Restoration & Preservation Fund

We gratefully acknowledge the following individuals, foundations, and corporations for their generous support of the Academy of Music Restoration Fund. We extend our gratitude to all supporters of the Academy of Music, including those not listed below and event sponsors.

For more information about making a gift to the Academy Restoration Fund, please contact the Annual Fund office at 215.893.3151 or AcademyofMusic@philorch.org.

Gifts received between July 1, 2023, and March 18, 2025

Proscenium Circle
\$25,000 and above
Joanna McNeil Lewis
Caroline B. Rogers
Mrs. Adele K. Schaeffer

Directors Circle
\$10,000 to \$24,999
Mr. and Mrs. S. Matthews V.
Hamilton, Jr.
Mr. and Mrs. Harry Edward Hill III
Mr. and Mrs. Bruce Leto
Ms. Jacqueline Badger Mars

Presidents Circle
\$5,000 to \$9,999
Lois and Julian Brodsky
Gay and Donald Kimelman
The Philadelphia Contributionship
Penelope and Thomas Watkins

Benefactors and Patrons
\$1,500 to \$4,999
Estate of Laura and William Buck
Mr. and Mrs. James M. Buck III
Brad Fusco
Ms. Rita W. Ingersoll
Robert and Betsy Legnini
The McCausland Foundation
John and Tammy Murabito
Mrs. Deborah M. Rohan
Valerie and Will Schwartz
Harold A.* and Ann R. Sorgenti
Mr.* and Mrs. Bernard Spain
Mr. and Mrs. Archbold D.
van Beuren
Janine and Jeffrey Yass

Friends
\$1,000 to \$1,499
Frank and Sandra Baldino
Sibby Brasler
Barbara R. Cobb
Ryan Fleur and Laura Banchero
Peter G. Gould and Robin M. Potter
Gail Howard
Mr. and Mrs. Kenneth E. Jones
Jeffrey P. Lewis and Mary Ann Rossi
William A. Loeb*
Ms. Stefanie W. Lucas and
Mr. Christopher Thompson
Dr. and Mrs. Morton S. Mandell
Asuka and Karen Nakahara
The Quaker City Foundation
Mrs. Bonnie Rocap, in memory of
Richard S. Rocap

*Deceased

The Frances Anne Wister Society

Individuals who have included The Philadelphia Orchestra in their estate plans are recognized through membership in the Frances Anne Wister Society. Miss Wister made a long-lasting mark on the Orchestra through decades of volunteerism and by leaving a major portion of her estate in support of its continued excellence. We gratefully acknowledge the generosity and foresight of those who have joined the Wister Society, and we welcome others to follow their example and make the Orchestra the beneficiary of a bequest or other form of planned gift.

If you would like more information about how to make a planned gift to the Orchestra, please contact Helen Radenkovic, managing director of philanthropic engagement, at 215.893.1819 or hradenkovic@philorch.org.

List complete as of March 18, 2025

Joseph and Julia Anisko
Mr. and Mrs. Robert S. Balter
Dr. F. Joshua Barnett* and
Dr. Heidi Kolberg
Mr. and Mrs. Clifford W. Baumbach, Jr.
Joel D. Beaver
Peter A. Benoliel* and Willo Carey
Ms. Jane Berryman
Jan R. Birsch
Jill and Sheldon Bonovitz
Dr. Elizabeth M. Bowden
Mrs. Frances Brenner
Beth* and Edward B. Brunswick
Dr. Robert A. Bubeck
Carol W. Buettger
Mrs. Laura T. Bullitt
Mrs. Carolyn S. Burger
Robert* and Helen Buttell
Peter L. Buttenwieser* and
Terry A. Marek
Ms. Kathleen Cafaro
Mr. Donald R. Caldwell
Mr. and Mrs. Frank J. Campbell III
Beverly Caplan-Freeman
Lawrence Chanen
Mr. and Mrs. Anthony A. Clifton
Gianne Conard
Mrs. M. Todd Cooke
Joyce J. Creamer

Ann Csink
Malcolm and Seta Demurjian
Tobey and Mark Dichter
Lisa and Peter DiLullo
Norman E. Donoghue, Esq.
Mrs. Anne Dooley
Antoinette M. Du Biel
MaryAnn Edwards
Dr. David J. Eschelmann
Dr. and Mrs. John Farmer
Gilbert Feinberg and
Nadeen Van Tuyle
Anne S. Foote
George and Joan Forde
Mr. Charles* and Mrs. Beatriz Furr
Rosalie K. Gerson
Dr. Alfred E. and Adele* Goldman
Betty and Gary Grunder
Nancy S. Halpern
Donna K. Hammaker, Esq., and
Dr. Thomas M. Knadig
Nimmi Harisinghani
Mr. and Mrs. Henry Hauptfuhrer
Martin A. Heckscher, Esq.
Robert Heim and Eileen Kennedy
Paul M.* and Barbara B. Henkels
Dr. Archibald C. Heves
Mr. Andrew Hohns
Kris and Dick Hughey
Linda R. Jacobs
Jerome Kaplan, Esq.
Dr. Richard B. Kent
William E. Kindley
Dr. Richard M. Klein
Mr. and Mrs. Robert C. Kline
Dr. Charles L. Knecht III
Dr. Deborah Komins
Bernice J. Koplin and
Joseph K. Koplin*
Ms. Deborah Krauss
Drs. Bong and Mi-Wha* Lee
Dr. Sherman Leis
William L. Leonard, Esq.
Doris and Joseph Levine
Denis Lohman and
Ellen Feldman Lohman
Mrs. Robert S. Lovett II
Nicholas Maiale
Mr.* and Mrs. A. Bruce Mainwaring
Mr. Donald Malpass, Jr.
Thomas and Julianne McDermott
Dr. and Mrs. Robert L. Meckelnburg
Carol R. Meister
Mrs. Philippus Miller, Jr.
Arlene Notoro Morgan
Stephanie and Michael Naidoff
Dr. and Mrs. Samuel K. Nash
Dr. and Mrs. John L. Neigh
Charles and Etta Nissman

Hon. Joseph D. O'Keefe
Mrs. Frank J. O'Malley
Mrs. Peter B. Pakradooni
John N. Park, Jr.
Claudio Pasquinelli and
Kyong-Mi Chang
B.J. Phillips and Kath Howarth
Barbara L. Phillips
Robert and Lynne Pollack
Nancy D. Pontone
Roger T. Prichard and
Astrid M. Caruso
Janet T. and Frank P.* Reiche
Mr. David Rhody
Dr. and Mrs. Yale Richmond
James, M. Roland
Mr. Edward Rorer
Dr. Harry Rosenthal
Lyn and George* Ross
Mr. and Mrs. Richard L. Rothermel
Harold and Marianne* Sacks
Jeffrey and Kendall Saunders
Catherine and Steve Schifter
Allan Schimmel
Mr. and Mrs. Gary G. Schlarbaum
Dr. and Mrs. William Schwartz
Robert and Joan Shaffer
Edward and Shelley Sigman
Mr. and Mrs. Richard L. Smoot
Yara Snylyk and Christina Snylyk
Dr. Norman Solomon and
Dr. Merwin Geffen
Mr. and Mrs. Harold* A. Sorgenti
Marilyn and Dean R. Staats
Alyce and Howard F. Stick
John and Sandra Stouffer
Dr. Norman L. Sykes
Leonard and Barbara Sylk
Andrew J. Szabo
Peter H. and Elizabeth V. Talbot,
in memory of Peter H. Talbot, Jr.,
and Frank A. Talbot
Dr. Cecilia Segawa Seigle
Tannenbaum
Mr. and Mrs. Sheldon L. Thompson
John and Gina Torzolini
Mrs. Herman B. Wagner
Nicholas A. Walls
Ruth W.* and A. Morris Williams, Jr.
Jackie and Earl L. Wolf
Dr. and Mrs. Theodore V. Yuhas
Walter Zanchuk
Ms. Margaret G. Zehner
Benjamin Zuckerman, Esq., and
Marian Robinson
Anonymous (9)

*Deceased

MAKE A PLANNED GIFT TO THE PHILADELPHIA ORCHESTRA

Ensure your legacy, benefit your loved ones, and support The Philadelphia Orchestra—today and for years to come—with a planned gift.

Planned giving can include a variety of deferred donations, such as bequests, IRA rollovers, and charitable gift annuities. Consider including The Philadelphia Orchestra in your estate plans.

To learn more about the benefits of planned giving, or if you've already arranged for a legacy gift, visit philorchlegacy.org or contact:

Helen Radenkovic

Managing Director of

Philanthropic Engagement

hradenkovic@philorch.org

215.893.1819



**PHILADELPHIA
/ORCHESTRA**

Yannick Nézet-Séguin
Music & Artistic Director

Administrative Staff

The Philadelphia Orchestra and Ensemble Arts

EXECUTIVE OFFICE

Ryan Fleur, Interim President and Chief Executive Officer

Doris Parent, Chief Inclusion, Diversity, Equity, and Access Strategies (IDEAS) Officer
Katharine Schimmer, Director, Strategic Initiatives
Kristen Chun, Manager, Civic Affairs
Colleen Coffey-Snyder, Manager, Office of the President and Chief Executive Officer
Sophia Konopelsky, Administrative Manager, Governance
Julianna Rudnick, Manager, IDEAS Strategies

ARTISTIC PLANNING

Jeremy Rothman, Chief Programming Officer
Makiko Freeman, Artistic Administrator
Shannon Walsh, Master Scheduler
EDUCATION AND COMMUNITY
Danielle Allen, Vice President
Eliza Bailey, Director, Theater and Dance
Maya Jacobs, Director, Instrumental Music
Joshua Lawrence, Manager, Jazz Education Programs
Adrian Rosas, Manager, Orchestral Music Programs
Mark Wong, Manager, Theater and Dance Education Programs
Nadine Choucri, Coordinator

ORCHESTRAL PROGRAMMING

Andrew Mellor, Audio Producer and Engineer
Stephen Alston, Assistant to the Music and Artistic Director and Artist Liaison
Christa Bean, Manager, Artist Services
Carolyn Hupalowsky, Manager, Artistic Administration

THEATRICAL PROGRAMMING AND PRESENTATIONS

Frances Egler, Vice President
Napoleon Gladney, Director
Tyler Daddario, Manager
Stacey Ferraro, Programming Operations and Events Manager
Laura McClatchy, Programming Artist Relations Manager
Morgan Sommer, Coordinator

ARTISTIC PRODUCTION

Tanya Derksen, Chief Artistic Production Officer
Joanna Scores, Administrative Manager
ORCHESTRA PRODUCTION
Marilyn Rife, Senior Director, Orchestra Personnel and Tour Residencies
Kimberly Barna, Director
Michelle Zwi, Director, Orchestra Operations and Touring
Joseph Scriva, Manager, Orchestra Personnel
Ashley Vogler, Administrative Coordinator, Orchestra Operations and Touring

PRODUCTION

Andre Barette, Director
King Rogers, Senior Production Manager, Academy of Music
Eric Hagenbarth, Production Manager, Miller Theater
Eileen Harris, Production Manager, Marian Anderson Hall and Special Projects
Chris Nelson, Production Manager, Ancillary Spaces
Adam Steinbauer, Production Manager, Perelman Theater and Education
Alison McLeod, Associate Production Manager
Augusta Zuerker, Administrative Assistant

Academy of Music

Timothy Johnson, Head Electrician
Kevin McEntee, Head Props
Beverly Nolan, Head Wardrobe
William Ringland, Head Carpenter
Greg Canzanese, Flyman
Kevin Barrett, Assistant Head Props
Jim McPeak, Assistant Head Carpenter
Scott Smith, Assistant Head Electrician
Steve Weber, Assistant Head Utility
Kimmel Center
Suzan Cerceo, Head Wardrobe
Christopher Hanes, Head Carpenter
Kenneth Nash, Head Audio
Michael Sweeney, Head Electrician
Ali Blair Barwick, Assistant Head Electrician
Ryan Morris, Assistant Head Electrician
Walter Bass, Assistant Head Audio

Walter Brown, Sr., Assistant Head Audio
Michael Cobb-Durkin, Assistant Head Electrician

Miller Theater

Bridget Brennan, Head Wardrobe
Christine Gaydos, Head Props
Jay Madara, Head Electrician
Pete Mohan, Head Carpenter
Joseph Schramm, Head Audio
Dave Cushing, Flyman
Stephen Hungerford, Assistant Head Carpenter
Joey Narducci, Assistant Head Electrician
Melissa Williams, Assistant Head Utility

BOX OFFICE

Dan Ahearn, Jr., Manager
Michelle Messa, Assistant Manager
Tad Dynakowski, Assistant Treasurer
Marie McCarthy, Assistant Treasurer
William Qualls, Assistant Treasurer
Thomas Sharkey, Assistant Treasurer
Mike Walsh, Assistant Treasurer

COMMUNICATIONS

Ashley Berke, Chief Communications Officer
Darrin T. Britting, Director, Publications and Content Development
Stephanie Williams, Director
Travis Wurges, Video Producer
Roberta Gorin-Paracka, Associate Director, Digital Asset Management
Max Mulpagano, Assistant Video Producer
Jake Rogan, Coordinator

DEVELOPMENT

Anna Marie Gewirtz, Vice President, Philanthropy
Liz Saccardi, Vice President, Philanthropy
Rachel Messeck, Director, Development Communications
Megan Gow, Administrative Assistant
ANNUAL FUND
Andrea Gartner, Managing Director, Annual Fund and Development Services
Jennifer Pratt Johnson, Director
April O'Brien, Director

Kathleen Moran, Membership Manager
 Matthew Palmer, Membership Manager
 Juan Carlos Mata, Development Coordinator
DEVELOPMENT SERVICES
 Emiline Homan, Manager, Donor Research and Strategy
 Madilyn Hotchkiss, Manager
 Wesley Hershner, Data and Research Analyst
 Jack D. Labbe, Development Coordinator
DONOR RELATIONS AND STEWARDSHIP
 Mitra Keykhah, Senior Director, Stewardship Programs
 Jennifer Monahan, Director, Development Events
 Joseph Sinkus, Director, Donor Relations
 Samantha Noll, Assistant Director, Development Events and Volunteer Relations
INSTITUTIONAL GIVING
 Ruth Auslander, Managing Director
 Rob Ruzanic, Senior Grants Manager
 Rachel Holder, Manager
 Lisalotte Crampton, Grant Writer
PHILANTHROPIC ENGAGEMENT
 Helen Radenkovic, Managing Director
 Neva Kelly, Senior Officer
 Kimberly V. Nelson, Senior Officer
 Natalie Sandstrom, Officer

FACILITIES

James Pecora, Vice President
 Jennifer Stark, Director, Capital Projects
 Scott Derkacz, Assistant Director
 Kevin Quinn, Chief Engineer
 Derrick Johnson, Lead Maintenance Mechanic
 Jonathan McCarthy, Maintenance Mechanic
 Gary Stanford, Maintenance Mechanic
 Kevin Hamilton, Dockmaster
 Trondell Hill, Housekeeping Project Manager
 Angela Schiavo, Painter
 Donna Cloman, Administrative Assistant
 Brea Kelley, Administrative Assistant
OFFICE SERVICES
 Kathie Cronk, Senior Manager, Office and Volunteer Services
 Nahema Rivers, Administrative Services Manager
 Thomas Pera, Administrative Services Coordinator

SAFETY AND SECURITY

John Gallagher, Director
 Euronn McCloud-Armstrong, Assistant Director, Security
 Jason Burnett, Safety Manager
 Matthew Lally, Security Manager
 Henri Byrd, Security Supervisor
 Mia Lowry, Security Supervisor
 Anthony Williams, Security Supervisor
 Roland Carbonetta, Jr., Security Officer
 Clifford Cook, Security Officer
 Clarence Cottman, Security Officer
 Kenneth L. Gilliard, Security Officer
 Miya Holman, Security Officer
 Rodney Howard, Security Officer
 Taebreya Lewis, Security Officer
 Sara Mahan, Security Officer
 Mian Mason, Security Officer
 Gregory Meek, Security Officer
 Randall Monte, Security Officer
 Kevin Phillips II, Security Officer
 Thomas Pierce, Security Officer
 Kenneth Reaves, Security Officer
 Timothy Ryan, Security Officer
 David Sisco, Security Officer
 Lashawn Washington, Security Officer
 Keira White, Security Officer

FACILITY SALES

Carrie Reynolds, Director
 Shawn Cotugno, Senior Manager
 Audrey Gildea, Senior Sales Manager

FINANCE

Mario Mestichelli, Executive Vice President and Chief Financial Officer
 Ruth Kasow, Vice President and Director
 Kevin Pearce, Controller
 Kathleen Curtis, Director, Budget and Planning
 Ashley Willcox, Senior Accounting Manager
 Laura DiGiambattista, Accounting Manager
 Jennifer Walker, Payroll Manager
 Kristoffer Domingo, Senior Accountant
 Jonelle Kelly, Senior Accountant, Payroll and Benefits
 Bridget Morgan, Senior Accountant
 Jennifer Munster, Senior Accountant
 Lauren Tighe, Senior Accountant
 Jessica Kerler, Staff Accountant, Budget
 Zachary Miller, Staff Accountant
 Mona Song, Staff Accountant
 Binh Vo, Staff Accountant/Accounts Receivable, Billings, and Collections

Matthew Demetrides, Accounts Payable Accountant
 Jamie Zorrilla-Gray, Staff Accountant/Accounts Payable
 Julrena Outen, Payroll Coordinator

INFORMATION TECHNOLOGY

Barbara Crane, Vice President
 John Callinan, Director, Technology Infrastructure
 Pari Dasmuth, Director, Business Applications and Project Management
 John Jardel, Senior Network Engineer
 Tristian Gay, Cloud/Systems Engineer
 Mohammed Djaballah, Manager, Business Intelligence
 Khalil Et Tkhyly, Business Intelligence Developer
 Mark Macalanda, Quality Assurance/Testing Analyst
 Leo Konkel, IT Support Engineer
 Mpho Reed, IT Support Engineer

MARKETING AND AUDIENCE EXPERIENCE

Crystal Brewe, Executive Vice President and Chief Marketing and Audience Experience Officer
 Christine Lauer, Administrative Coordinator
AUDIENCE EXPERIENCE
 Lindsay Berckman, Director
 Connor Lucas, Director, Food and Beverage Business
 Kyleigh Taylor, Associate Director, Audience Services
 Katie Masterson, Senior Manager, Events Services
 Carla Pontarelli, Senior Manager, Guest Services
 Julie Bernard, Manager, Operations Support
 Keith Donahue, House Manager
 Korey Jones, Venue Manager, Kimmel Center
 Thomas J. Kerrigan, House Manager
 Todd Kunze, Venue Manager, Academy of Music and Miller Theater
 Erin Lunsford, Administrative Manager
 Devin Randall, House Manager
 Travis Roberts, House Manager
 Tyshawn Burrell, Operations Support
 Andrew Hight, Operations Support
 Zapheir Johnson, Operations Support
 Christopher Kyle, Operations Support
AUDIENCE SERVICES AND TICKETING
 Matt Cooper, Vice President, Audience Services
 Meg Hackney, Director, Ticketing and Audience Services

Jayson Bucy, Associate Director,
Ticketing Operations
Owen Groce, Audience Services
Manager
Emily Grove, Training Manager
Catherine Pappas, Subscription
Project Manager
Chrisla Dor, Priority Services
Coordinator, The Philadelphia
Orchestra
Chris Eklund, Priority Services
Coordinator, Ensemble Arts Philly
Matthew Enters, Quality Assurance
Coordinator
Elijah Doss, Group Sales
Representative
Rob Lawlor, Group Sales
Representative
Nicola Scicchitano, Lead Audience
Services Representative
Danielle Woolis, Lead Audience
Services Representative
Elly Serafin, Audience Services
Representative
Thursha Sutherland, Audience
Services Representative
Andy Svarczkopf, Audience Services
Representative
Jamie Agins, Audience Services
Associate
Jaylyn Anderson, Audience Services
Associate
Tristan Berrien, Audience Services
Associate
Damarise Johnson, Audience Services
Associate
Alicia Katz, Ticketing Operations
Associate
Cierra Woods, Audience Services
Associate
Rebecca Childs, Ticketing Operations
Coordinator

DIGITAL MARKETING
Daniel Christiansen, Senior Director,
Digital Marketing Strategy and Web
Sarah Biddle, Manager, Digital
Marketing
Brooke Grant, Web Content and UX
Manager
Rachael Micucci, Marketing Manager,
Customer Journey
Marie Altmann, Digital Marketing
Associate
MARKETING
Elizabeth Hess, Vice President
Leslie Patterson-Tyler, Vice President,
Program Communications and
Partnerships
Geoff Cohen, Associate Vice
President, Orchestra Marketing
Karina Kacala, Senior Director
Ashley Ryan, Senior Director
Lauren Hall, Director, Program Public
Relations
Victoria McCabe, Director
Ana Thomas, Senior Manager, Brand
Strategy and Creative Services
Erica Barry, Manager
Kacy Hofstetter, Manager
Manisha Modi-Davis, Manager,
Audience Development and
Group Sales
Alec Newell, Manager, Audience
Development and Affiliates
Matthew Nicolosi, Senior Data
Analyst
Carrie Williams, Manager
Zoe King, Data Analyst
Doménica Castro, Marketing Content
Associate
Alison Hopkins, Associate
Emma Noel, Associate
Erin Witman, Associate
Rachel Bennett, Graphic Designer
Remy Perez, Graphic Designer

PEOPLE AND CULTURE
Karen M. Tomlinson, Vice President
Jessica Rivera, Director,
Compensation and Benefits
Christopher Shaw, Director, Talent
and Culture
Indonesia Young, Talent Management
Specialist
Ashley Colston, Coordinator

ADMINISTRATIVE OFFICES
300 South Broad Street
Philadelphia, PA 19102
Phone: 215.893.1900
www.philorch.org

TICKET OFFICE
Business hours:
The Academy of Music
Broad and Locust Streets
Philadelphia, PA 19102
Tickets: 215.893.1999

Concert dates
(two hours before concert time):
The Kimmel Center
Broad and Spruce Streets
Philadelphia, PA 19102



Photo: Pete Checchia

DID YOU KNOW?

You can support arts education and receive tax credit for up to 90% of your donation.



To learn more,
scan the QR code above or visit
philorch.org/support-us

PHILADELPHIA/ORCHESTRA

Yannick Nézet-Séguin · Music & Artistic Director