


Using Streamtext for captioning at your Ensemble Arts Philly presentation




EnsembleArts

Broadway

Before Your Arrival:

-  Ensure you are bringing as close to a fully charged device as possible.
- If you have one, we recommend bringing a portable charger.

Upon Arrival:

-  Log in to the Ensemble Arts guest network.
 - Network: GUEST
 - Password: STAY4ever
 - Difficulty logging in?
 - Try forgetting the network and rejoining
 - Use “Kimmel Center Free WiFi”
- Close out of all other applications to reduce battery draining.
-  Lower your brightness to your preferred setting for the dim theater.
-  Turn your phone on Silent and/or Do Not Disturb for all notifications.
- Disable sleep functionality to ensure your screen doesn't go dark during captioning (see additional guide).

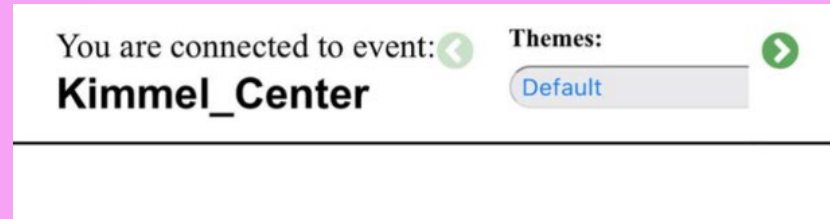
Using Streamtext for captioning at your Ensemble Arts Philly presentation

Scan QR code for your Streamtext link:



Opening your Streamtext link:

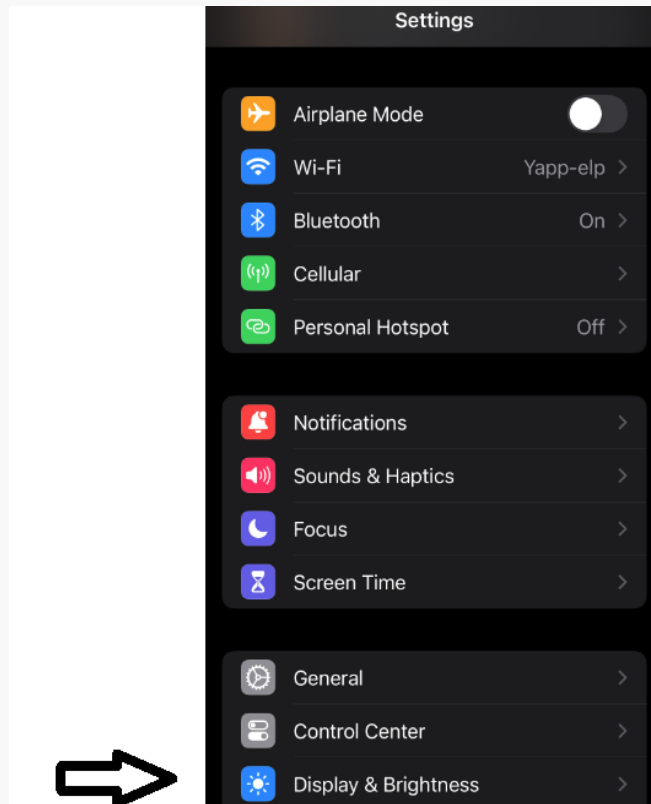
- Streamtext is not an app; it will open in your browser.
- Prior to the performance, you may see the captioner conducting tests.
- In the top right corner, you can select a specific theme that will change the background and text color.



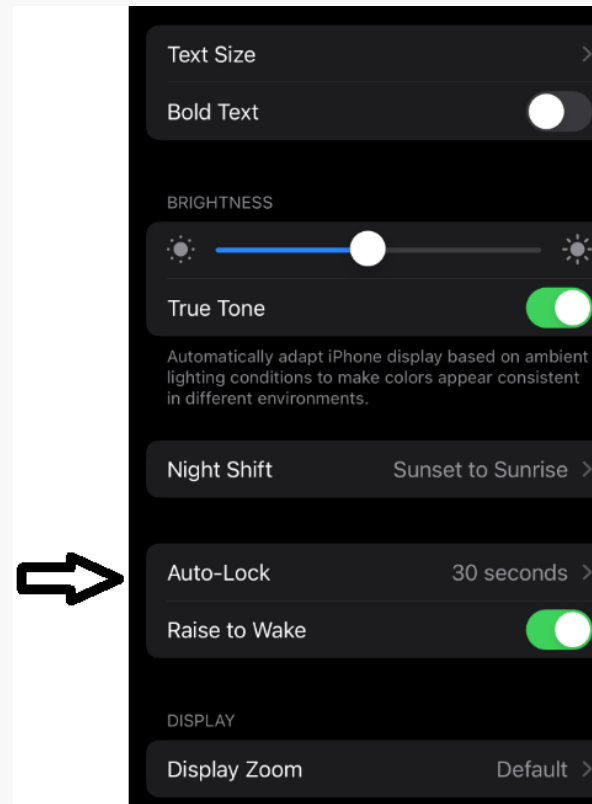
- You can also customize settings by using the green arrows to scroll and select “Custom”. Choose your preferred font size, font family, background color, and text color.



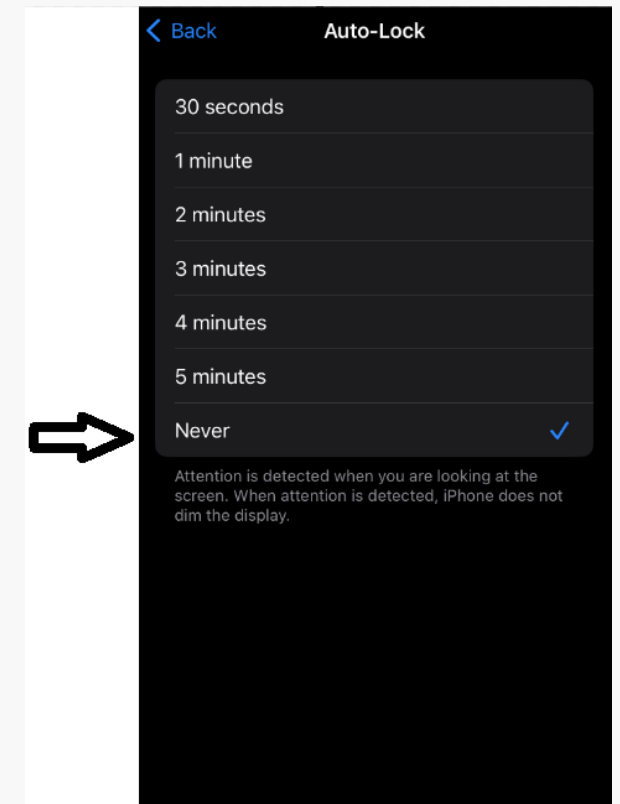
Disabling sleep mode (Auto-Lock): iPhone



1. In settings, go to Display and Brightness



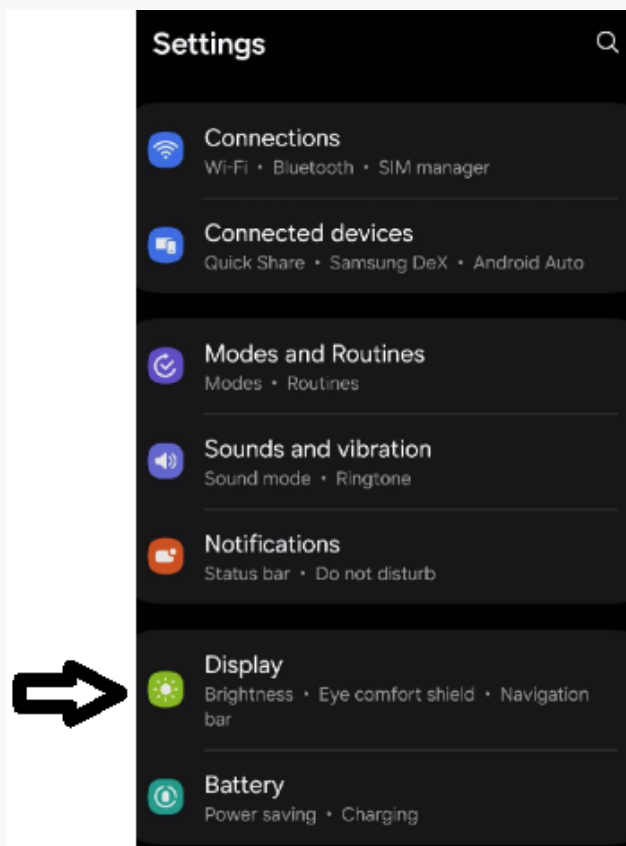
2. Scroll down, select Auto-Lock.



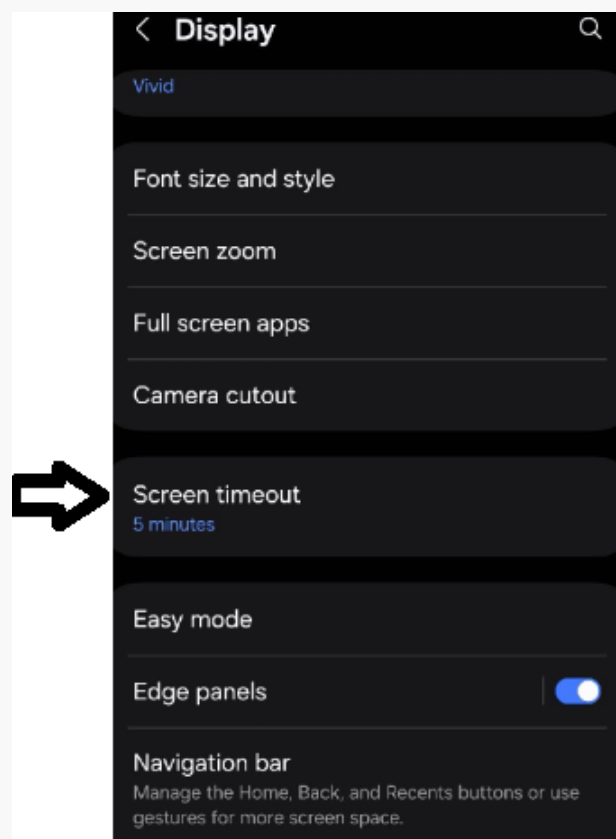
3. Scroll down, select Auto-Lock.

Note: If your phone is set to “Low Power Mode” you will need to go to “Battery” in Settings and turn that off before disabling Auto-Lock.

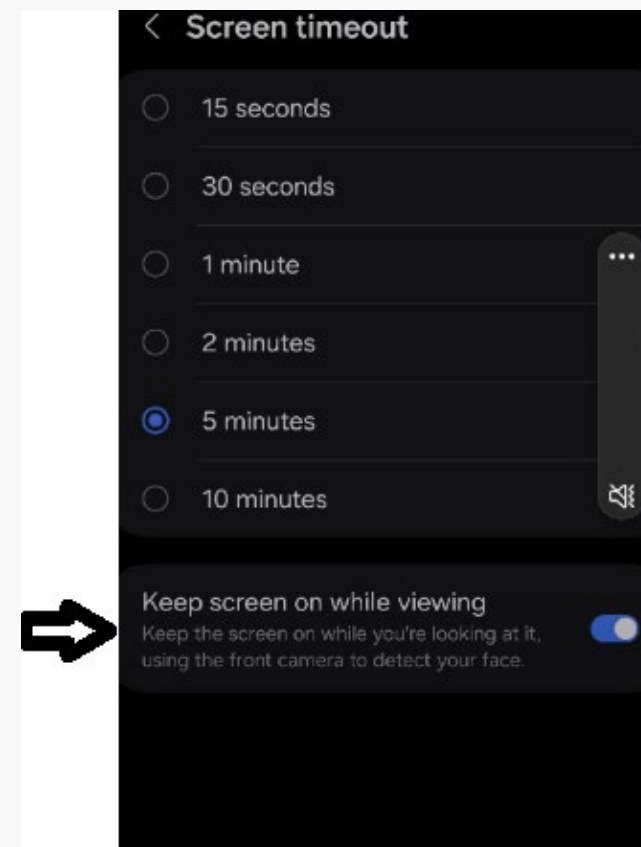
Disabling sleep mode (Screen time-out): Android



1. In settings, go to Display.



2. In Display, select Screen timeout.



3. Select “Keep screen on while viewing”.