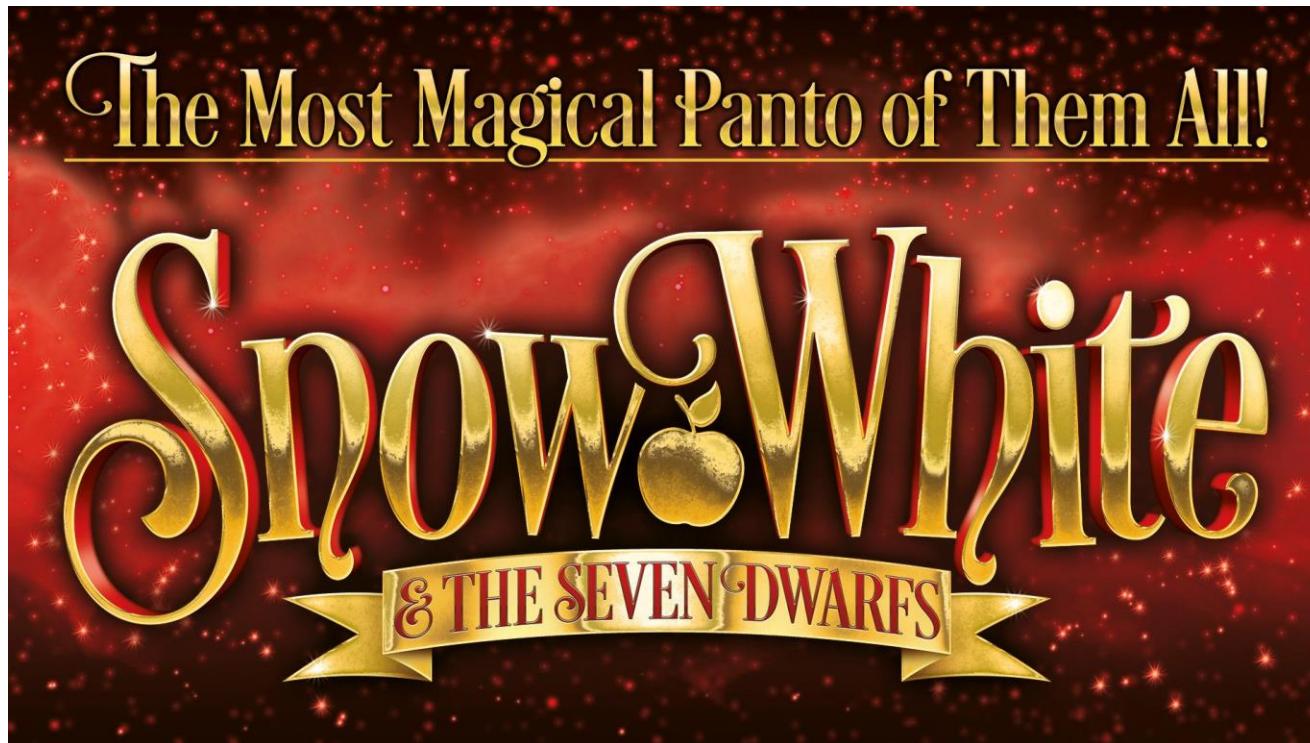


GOING TO SEE SNOW WHITE AND THE SEVEN DWARFS



Snow White and the Seven Dwarfs is a special kind of show called a Pantomime. The actors will tell a story by talking, singing, dancing, and asking the audience to join in with singing or shouting out. You can join in if you want to.



Seeing a show is different to seeing something on TV or a movie because the people in a show are there on the stage in real life. They are called actors. Here are some of the actors you will see on stage. They are dressed up as characters and will be acting on the stage.



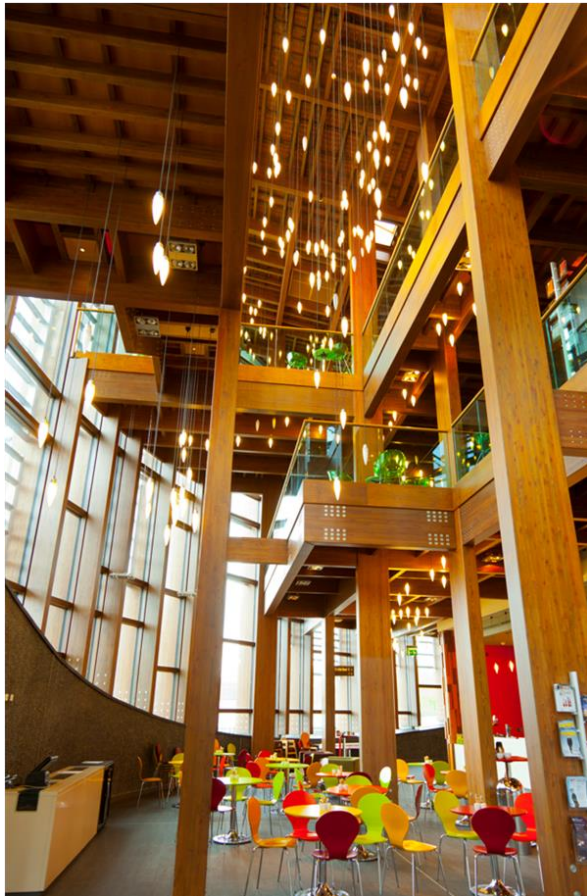
The show is at the Aylesbury Waterside Theatre.



The entrance is decorated for Snow White and looks like this. You may have to stand in a queue to get into the theatre.



A member of staff will greet you at the entrance and will scan your eTicket. You may have this printed onto a piece of paper or it may be on your phone.



This is the foyer. It is where you will wait before going into the theatre.

There will be lots of people and it can be quite busy and noisy.

There is a bar where you can buy drinks or snacks before the show starts and in the interval.



If you need to collect your tickets, or if your eTicket didn't scan correctly, you can collect them from the Box Office.

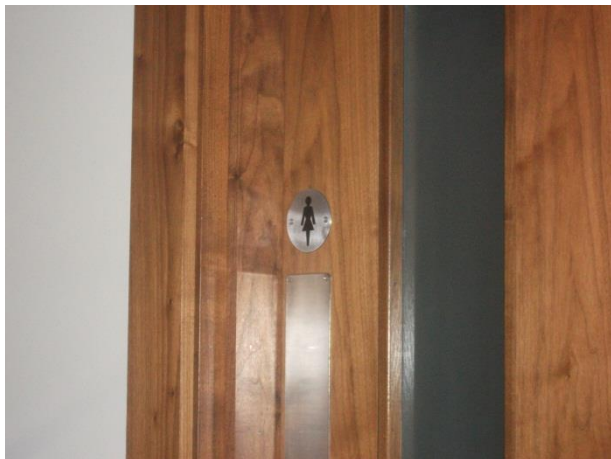


The theatre has three floors. Your seats will be in a place called the Stalls, Circle 1 or Circle 2.

If your seats are in the Stalls you do not need to use the stairs or the lift.
If you are going to Circle 1 or Circle 2 you will go up the stairs or use the lift.



There are toilets on each floor and you can follow these signs to find them.





The Ushers will be wearing this uniform. If you get lost or cannot find what you are looking for, please ask them to help you as they will be happy to help.



When the auditorium is ready, there will be an announcement informing everyone that the doors are now open and inviting people to take their seats. You will need to enter the auditorium through the numbered door that is on your ticket.



When you go through the doors you will see the auditorium. It is very big and there are a lot of seats.



An Usher will look at your tickets and tell you which seats to go to. The numbers on the tickets tell you where to sit. It is not a choice.



When you get to your seats, sit down and talk quietly.



When it is time for the show to start, someone will ask everyone to turn off their phones. The theatre will get darker and everyone will become quiet. Try to be quiet while the show is on unless the actors ask people to shout out.



There will be actors performing as characters in the show. The characters are not real; they are just people wearing costumes and makeup.



There will be a lot of singing, laughing, and dancing. Sometimes it will be loud. There will also be people waving flashing wands and toys. If it is too loud or overwhelming you can ask a member of staff to take you to the quiet area, which looks like this.

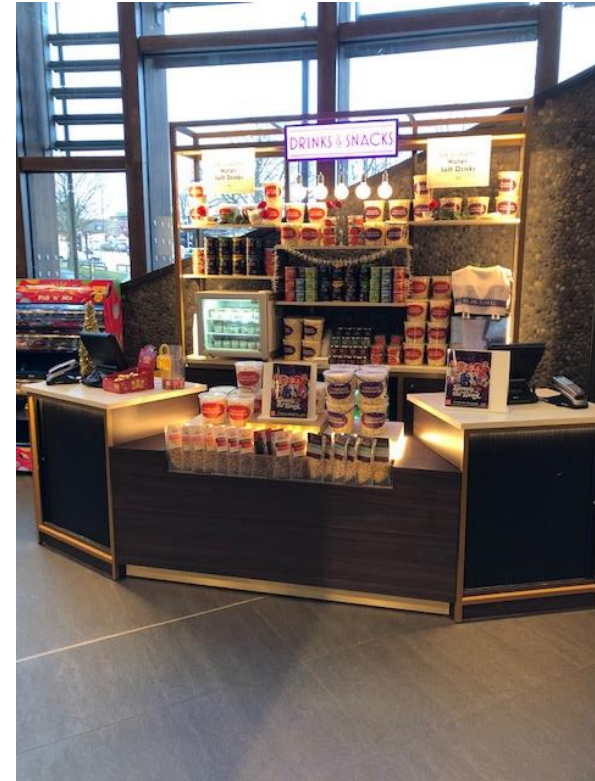


After each song, some people will clap.

Clapping is kind because it tells the actors you liked their song. If you want to clap, you can.



In the event of an emergency evacuation, you must follow the instructions given by theatre staff and follow these signs to leave the building.



In the middle of the show, there will be a break. This break is called the interval. During the interval many people will stand up to go and get a drink, snack or to go to the toilet. If you want to, you can ask for a snack or a drink from the bars or kiosk.



After the interval, everyone will come back and sit down in their seats again. It will get darker and quieter again just like at the beginning of the show. The actors will come back on the stage and finish telling the story of Snow White and the Seven Dwarfs.



At the end of the show, all of the actors will come out on stage. This is called a Curtain Call. Many people will clap a lot so the actors know how much they liked the show. You can clap if you want to.



The clapping will last longer than the claps between songs and people may stand up whilst they are clapping. This is to show the actors they have really enjoyed the show.



When the actors have left the stage, the lights will get brighter and everyone will start moving around. You may either leave the auditorium immediately or wait until the crowds have quietened down.



You will leave the theatre through the same doors you entered through. They will look like this and be specially decorated for the Pantomime.



We hope you have a great time at the Aylesbury Waterside Theatre and if you would like to organise an orientation visit, please feel free to contact us.

This Visual Story has been created by Rebecca Godden (Former Creative learning Delivery Partner of the Waterside theatre) and updated for 2023 by George Pryor (Ticketing & Sales Manager) . Theatre photos by Alex Gillepsy, Christopher Leathers, Owen Bevan, Rebecca Godden, Nick Woodford, George Pryor and Alison Trimming. Copyright © 2012, 2016, 2019 & 2023. All rights reserved.

Unless otherwise indicated, all materials on these pages are copyrighted by The Waterside Theatre. All rights reserved. No part of these pages, either text or image may be used for any purpose other than personal use. Therefore, reproduction, modification, storage in a retrieval system or retransmission, in any form or by any means, electronic, mechanical or otherwise, for reasons other than personal use, is strictly prohibited without prior written permission.