

THE
ALEXANDRA
EST. SINCE 1901

**Visual Story for Madagascar the Musical, at
The Alexandra Birmingham**



Visual Story

This guide is a visual resource for children and adults with an Autism Spectrum Condition visiting the theatre. This resource is intended to help prepare any visitors for a new experience and to help them to become familiar with the surroundings.

This visual story contains lots of images and information to prepare you for your visit including:

- Photographs of The Alexandra and information on how to find your way around
- Descriptions and pictures of the main entrances and exits in the venue
- Descriptions and pictures of the quiet space

Some things to know:

- The set has a lot of big moving parts which may make some noise when being moved into place.
- None of the actors or puppets will leave the stage and come into the auditorium.
- During the curtain call the audience are asked to stand and dance by the performers – this is entirely optional, and you do not have to join in if you don't want to.

We hope you enjoy your visit!

Where to go on the day

When you arrive at theatre, it may give information on your tickets as to which door to enter through. However, if it doesn't you can enter through any of our main entrances.

This is what the front of the theatre looks like from the outside. This is our **Main Entrance**, located on Suffolk Street Queensway.



Our **'Old Foyer'** entrance which can be found on John Bright Street behind the front entrance.



There may be lots of people here waiting to see the show. You might hear music playing in the entrances too. If it is too busy or too loud you can wait outside until there are less people waiting to enter. It can become crowded from 45 minutes before the performance and may be quite loud. If it is too loud, you can cover your ears or wear headphones.

Useful information on the day

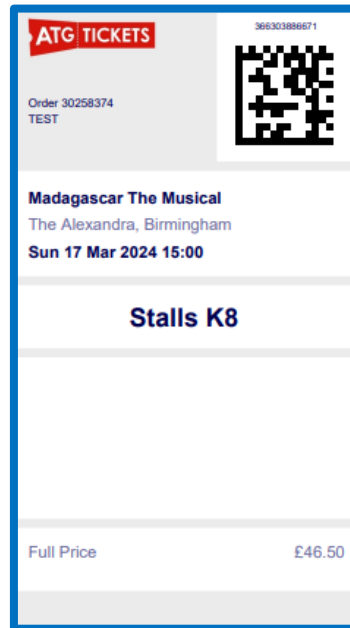
When you arrive, you will need to show your tickets to an usher. An usher is someone who works for the theatre. They will be wearing white shirts and black and white striped ties with a name badge. If you are coming to see a Relaxed Performance some staff will be wearing purple t-shirts which say 'Happy to Help' on. Ushers are there to help if you need to ask any questions. It's OK to ask questions if you want to.



When you arrive, there will be people standing near the doors dressed in black. These are security guards. They may need to have a look in your bag to make sure you are not bringing any alcohol or anything dangerous. Don't be frightened of them, they are there to keep you safe!

Your tickets

You, or the person you are attending with, should have your tickets on a smart phone/ device or printed off at home, this will look like the below. This is an e-ticket.

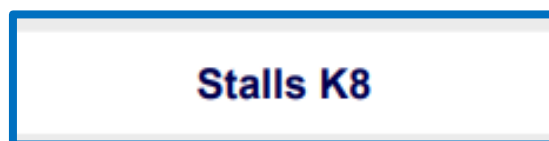
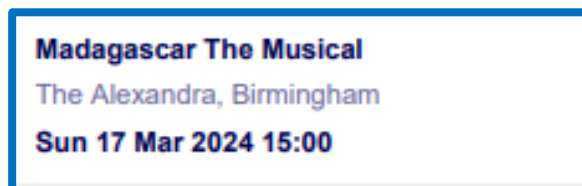
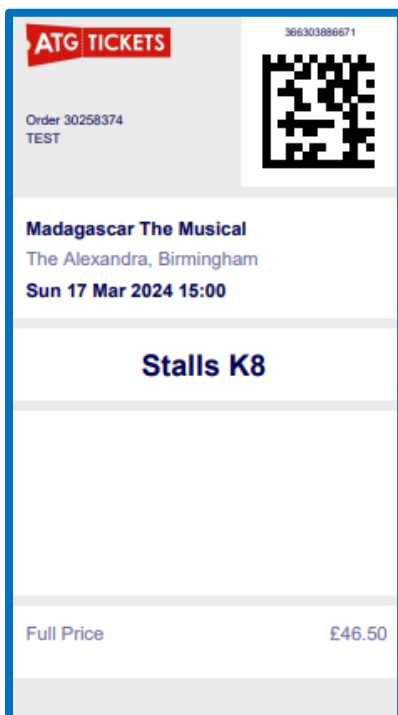


However, if you need any help with tickets for the show, you can go to the Box Office. There may be people queuing up at the Box Office. A member of the Box Office team will help with any query.



Your e-ticket will tell you what level you are sitting on, the letter of the row that you are sitting in, and your seat number. You can ask an usher to help you find your seat if you want to. You must sit in this seat, it is not a choice. If you are feeling uncomfortable in your seat you can ask an usher if you are able to move seats. You must ask an usher before you move seats.

Your e-ticket will also tell you what time the show will start.



When the auditorium opens, you can enter the auditorium with your family or group. You may have to wait in line.

The Bars

There is a Concierge Desk in the foyer where you can buy a programme or some sweets and water.



Our main bar is called The Piano Bar and it looks like this.

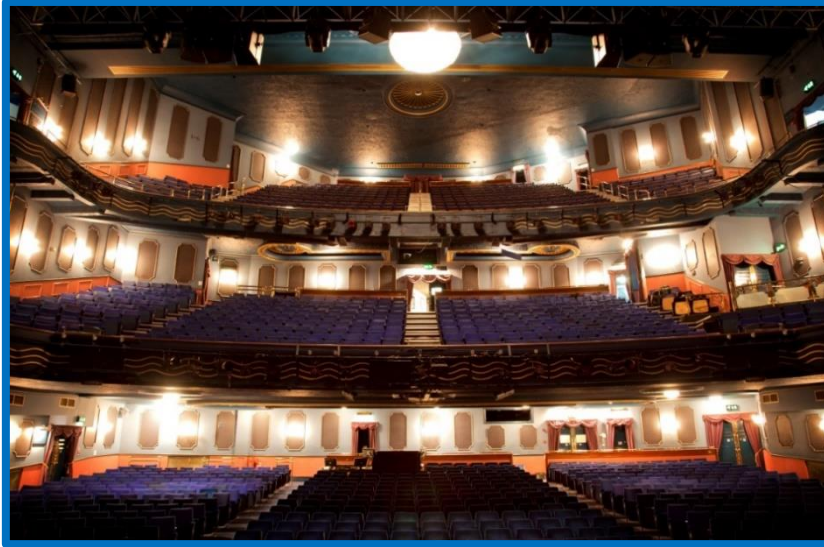


At the end of the bar there is a hot and cold drinks and snacks kiosk. There may also be lots of people waiting here to buy things.



Inside the Auditorium

Your seat will be in the auditorium, which is a large room where lots of people sit down to watch the show. When there are no people sitting down the auditorium looks like this.



This is the **Stalls** Level. It is on the ground floor of the auditorium.



You will have to enter through this door and travel down 9 steps.



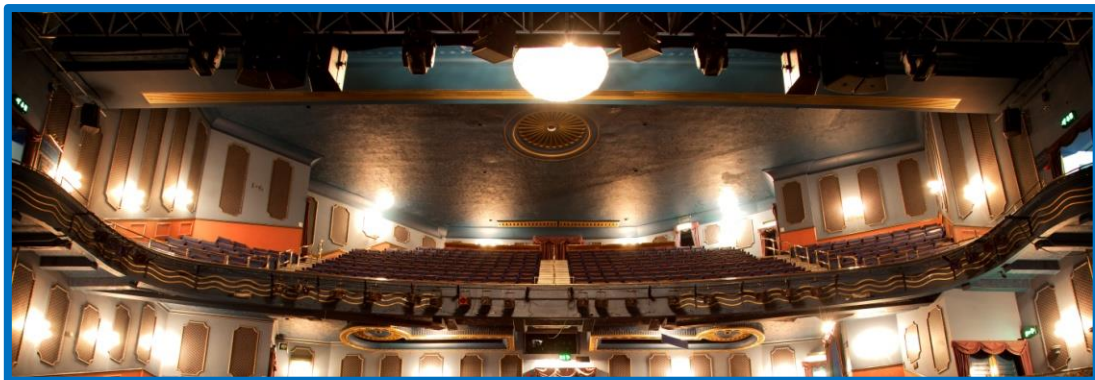
This is the **Dress Circle**. It is the Middle Level of the auditorium.



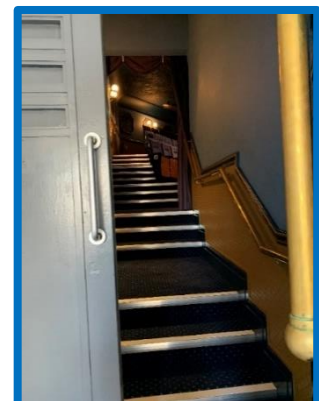
You will have to travel up 21 and down 6 steps from the front foyer and enter through this door.



This is the **Grand Upper Circle**. It is the Top Level of the auditorium.



The Grand Upper Circle is very high up in the theatre. If you think it is too high, please tell an usher. You will travel up 72 steps and enter through this door.



When the show starts the actors will walk on to the stage at the front of the auditorium.

When there is no show on the stage, this is what it looks like



If you need to go to the toilet, you must look for these signs, or you can ask an usher for directions to the toilet. You may need to queue outside the toilet. An usher will tell you when it is your turn to go in.



Just before the show starts the lights may turn off and there will be an announcement asking everybody to be quiet and to turn off their mobile phone. You will need to be quiet and turn off your mobile phone too, so that you can hear the show.



The actors will walk on to the stage and start talking. Sometimes there will be music too. If the music is too loud you can ask an usher to take you to the quiet area.

Information on the Quiet Space

The Quiet Space will be available during Relaxed Performances. To get to the quiet space you will walk through this door.



The quiet space looks like this:



You can stay in the quiet space as long as you want to. If you want to go back into the auditorium you can ask an usher to take you back to your seat. If it isn't a Relaxed Performance, you can still leave the auditorium if you need too. Please ask an usher for help if required.

The Performance

When the actors are on the stage they may say or do something which is funny and people may laugh. You can laugh too if you want to. You do not have to laugh if you don't want to.



During the show the actors might say or do something which makes you feel sad. You can feel sad if you like, that's ok. If you want to, you can ask an usher to take you to the quiet space.



When the show finishes people might clap their hands and stand up to show the actors that they enjoyed the show. You can clap your hands too if you want to. You do not need to clap your hands if you don't want to.



Sometimes the clapping can sound very loud. You can cover your ears with your hands if it is too loud or you can ask an usher to take you to the quiet space.

At the end of the show the lights will come back on and all the people will start to leave the theatre.

Or you can stay in your seat until all the people have left if you want to. Then you can leave the theatre.

The Characters

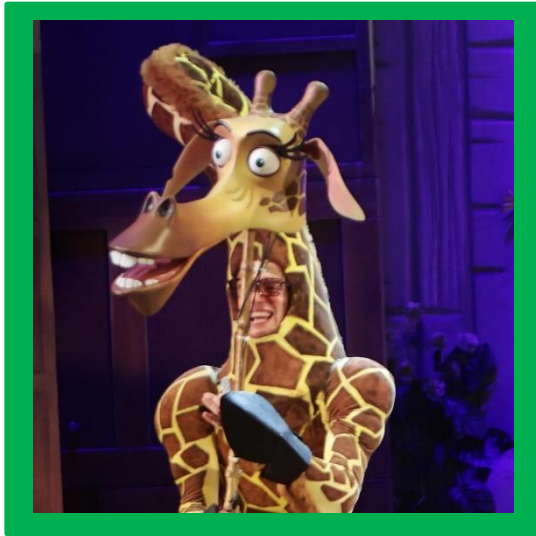
Here are some of the characters in the musical. There are more, but you will see these ones the most during the show.



This is Alex the Lion.



This is Gloria the Hippopotamus.



This is Melman the Giraffe.



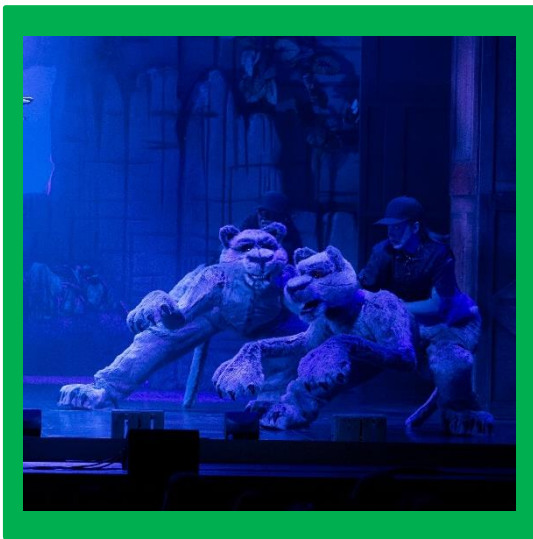
This is Marty the Zebra.



This is King Julien the Lemur.



These are Private, Kowalski, Skipper and Rico the Penguins.



These are the Foosa. They are quite fierce, and not very friendly.

Some of the characters might be a little scary, but none of the animals or the puppets will leave the stage at any point.

On the next page, we will tell you the main parts of the story,
which is called the plot. If you don't want to know what
happens, skip the next page!

The Plot

Alex the lion is the king of the urban jungle, the main attraction at New York's Central Park Zoo. He lives with his best friends – Marty the zebra, Melman the giraffe and Gloria the hippo. They have spent their whole lives happily living in the Zoo with lots of visitors and all of their meals provided for them.

One day, Marty finds out the penguins are planning to escape. He wants to explore the world, so he goes with them. Alex, Gloria, and Melman follow them. They are caught and are all put on a ship that will take them to a wildlife preserve in Kenya. The penguins want to go to Antarctica, and they take control of the ship. Alex, Gloria, Marty, and Melman's crates fall off the ship and into the sea.

They end up in Madagascar, an African island, where King Julien lives. They meet lots of new animals, but not all of them are friendly. Alex gets very hungry and tries to eat Marty and the friends fall out. The Penguins didn't like Antarctica, so land the ship in Madagascar. Marty tries to convince Alex to go back to New York on the Penguin's ship. Alex saves Marty from some animals who try to attack him, and they become friends again. They plan to return to New York, but the ship breaks down!

Thank you for joining us!

Thank you for joining us for this performance of *Madagascar the Musical*. We hope you enjoyed the show!

If you have any comments about the performance or if you want to tell us more about your experience, you can email us or write to us via the addresses below.

birminghamaccess@theambassadors.com

Birmingham Access Team

The Alexandra Theatre

Station Street

Birmingham

B5 4DS