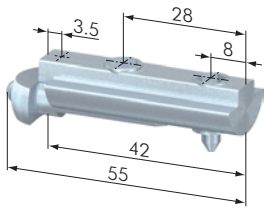
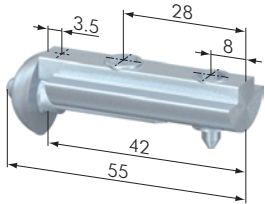


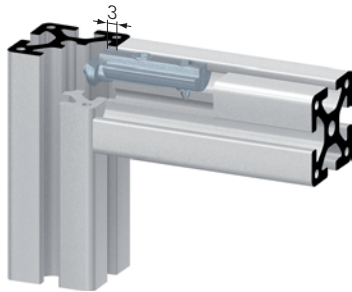
40



SV0101V



SV0102V



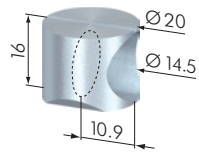
Quick Fastener 40		
Part No	Description	Weight
SV0101V	Quick Fastener 40	46 g
SV0102V	Quick Fastener 40 S	47 g

**Application:** No machining of either profile is required when using this fastener. The RH grub screw is driven into the profile to retain the t-nut, the LH grub retains and tensions the anchor during the fastening process. The anchor has an anti-twist feature.

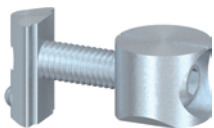
**Material:** steel, zinc-plated

- Assembly:**
- Insert the t-nut portion of fastener so that the anti-twist feature protrudes 3 mm over the end of the profile.
  - Screw in the cone point set screw on the t-nut portion of fastener into the profile.
  - Insert the anchor into the t-slot of the mating profile and tighten into place by means of the set screw on the t-nut portion of the fastener.

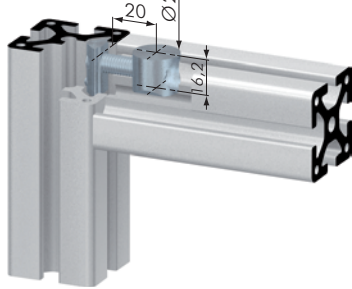
40



SV1800V



SV1801V



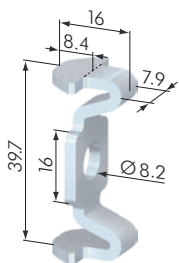
Universal Fastener 40		
Part No	Description	Weight
SV1800V	Universal Fastener 40	21.5 g
SV1801V	Universal Fastener Set 40	43.3 g
SB1350	Machining Universal Fastener	

**Application:** Standard fastener with universal applications. The push-in t-nut can be swiveled into the profile t-slot at any point and is held in position by a spring-loaded ball.

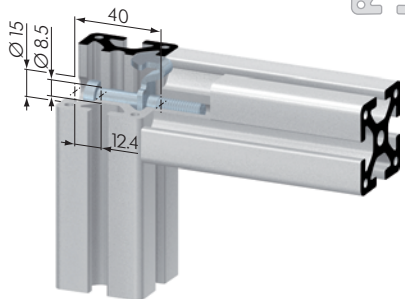
**Material:** steel, zinc-plated

- Assembly:**
- Insert t-nut into the t-slot of profile.
  - bore hole for the fastener housing:  
Ø20 mm, 20 mm from the profile end, 16 mm deep

40



SV1900V

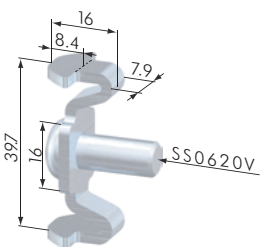


Standard Connector 40		
Part No	Description	Weight
SV1900V	Standard Connector 40	14 g
SV1915V	Standard Connector Set 40	21 g

**Application:** An inexpensive and simple connection for profiles. The t-slot is not deformed when the joint is made, giving greater stability to the joint. At the same time, the fastener guarantees no twisting of the joined profiles.

**Material:** steel, zinc-plated

- Assembly:**
- bore hole for Km 8:  
Ø8.5 mm, 20 mm from the profile end, 40 mm deep
  - bore for cap screw head:  
Ø15 mm, 20 mm from the profile end, 12.4 mm deep
  - Tap center hole of mating profile with an M 8 thread



SV1915V