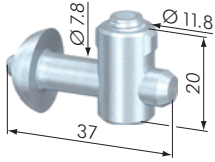
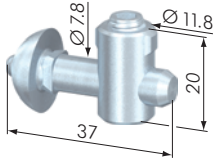


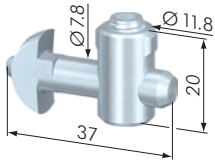
40



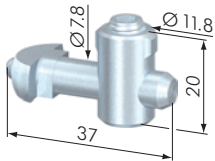
SV1001V



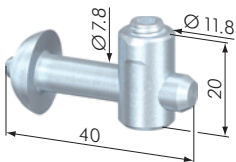
SV1211V



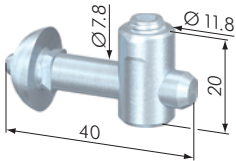
SV1011V



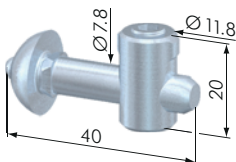
SV1021V



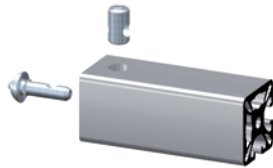
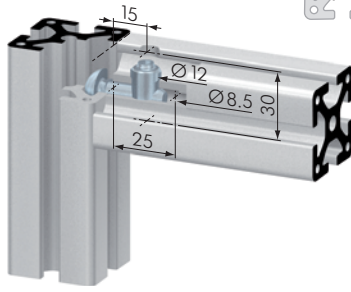
SV1213V



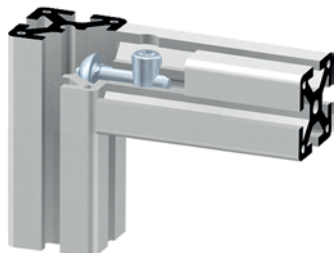
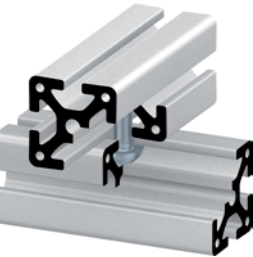
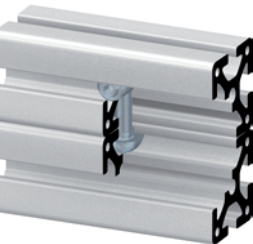
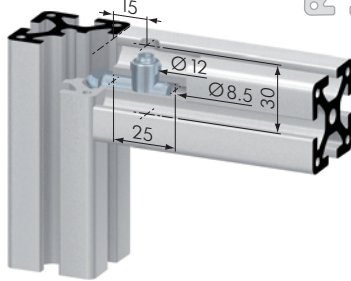
SV1221V



SV1222V



SV1212V



40

40

Central Fastener 40 S / SV

Part No	Description	Weight
SV1001V	Central Fastener 40 S	28 g
SV1353V	Central Fastener 40 S VA	29 g
SV1211V	Central Fastener 40 SV	28 g
SV1212V	Central Fastener 40 SV ON	27 g
SV1350V	Central Fastener 40 SV VA	30 g
SB1332	Machining Central Fastener	

Application: All-purpose universal fastener. The slide-in anchor is held in position in the profile groove by a spring-loaded ball in the opposing profile t-slot. The SV fasteners have an anti-twist feature. The SV ON fastener is to be used with closed profiles.

Material: steel, zinc-plated or stainless-steel

- Assembly:**
- bore hole for the barrel housing: Ø 12 mm, 15 mm from profile end, 30 mm deep
 - bore for center hole on end of profile for anchor: Ø 8.5 mm, 25 mm deep

Central Fastener 40 EL / EQ

Part No	Description	Weight
SV1011V	Central Fastener 40 EL	26 g
SV1351V	Central Fastener 40 EL VA	26 g
SV1021V	Central Fastener 40 EQ	26 g
SV1352V	Central Fastener 40 EQ VA	26 g
SB1332	Machining Central Fastener	

Application: All-purpose universal fastener. The twist-in anchor, with an anti-twist feature, can be fixed in the profile groove at any point. The anchor is held in position by a spring-loaded ball in the opposing profile t-slot.

Material: steel, zinc-plated or stainless-steel

- Assembly:**
- bore hole for the barrel housing: Ø 12 mm, 15 mm from profile end, 30 mm deep
 - bore for center hole on end of profile for anchor: Ø 8.5 mm, 25 mm deep

Central Fastener 40 SL / SVL

Part No	Description	Weight
SV1213V	Central Fastener 40 SL	30 g
SV1221V	Central Fastener 40 SVL	31 g
SV1222V	Central Fastener 40 SVLL	
SB1332	Machining Central Fastener	

Application: Special applications. The slide-in anchor, with an anti-twist feature, can be fixed in the profile t-slot at any point. The anchor is held in position by a spring-loaded ball in the opposing profile t-slot. The SVL fastener has an anti-twist feature. Both fasteners can be used for parallel and transverse connections.

Material: steel, zinc-plated

- Assembly:**
- bore hole for the barrel housing: Ø 12 mm, 20 mm from profile end, 30 mm deep
 - bore for anchor in the profile: Ø 8.5 mm, 20 mm from profile end, 25 mm deep