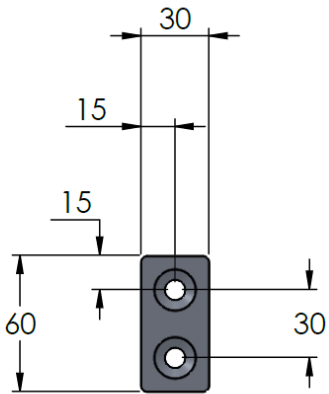


US0170502



Joining Plates

Part #	Series	Description	Thickness
US0170502	30	Attachment Strap	6.4mm
US0170503	30	Attachment Angle	6.4mm
US0170504	40	8 - Hole Joining Plate, Anodized Aluminum	4mm
US0170508	1.5"	Joining Plate - 4 Hole	6.4mm
US0170513	40	Joining Plate, 60°	6.4mm

MATERIAL: ALUMINUM

FINISH: CLEAR ANODIZED

REQUIRED HARDWARE: (Hardware NOT Included)

3.2mm THK. = M8x12FHCS

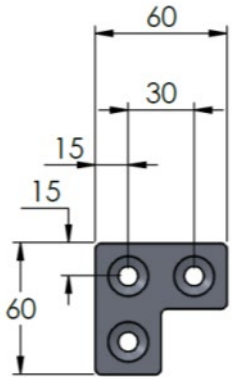
4mm THK. = M8x14FHCS

6.4mm THK. C'SINK = M8x16FHCS

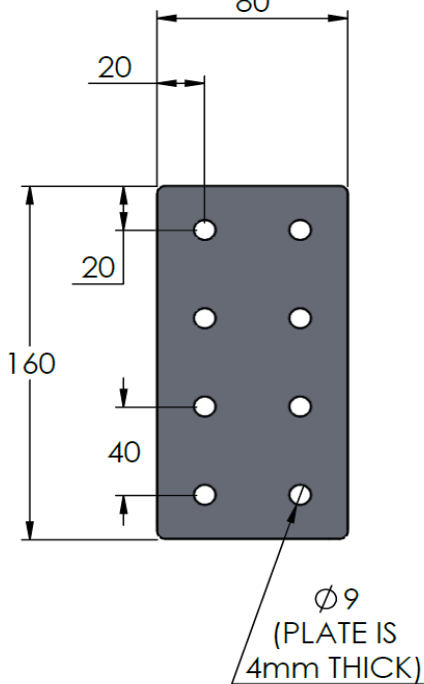
6.4mm THK. THRU = M8x16BHCS & SS8208V (lock washer)

ALL USED WITH SV2102V (M8 T-NUT)

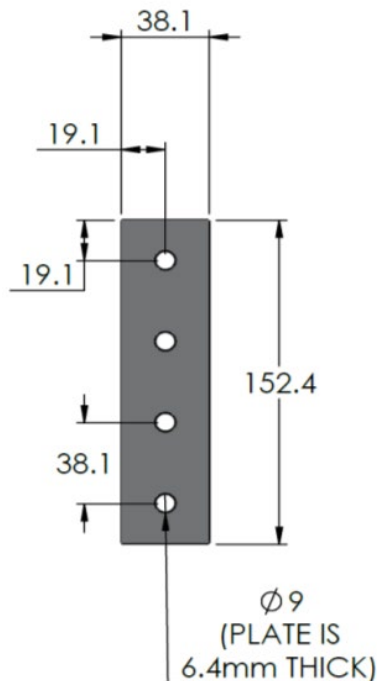
US0170503



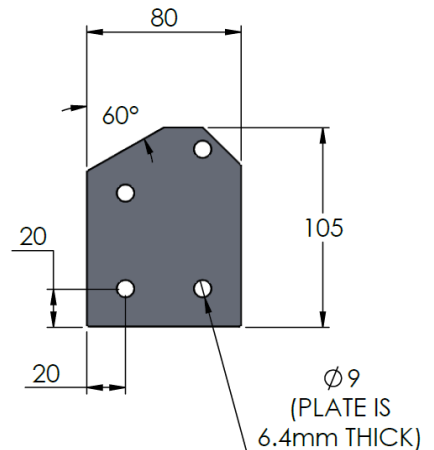
US0170504
80



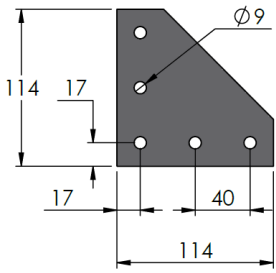
US0170508



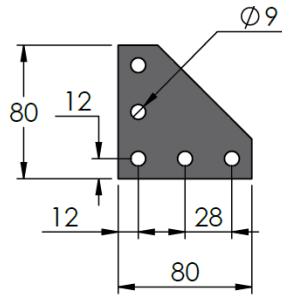
US0170513



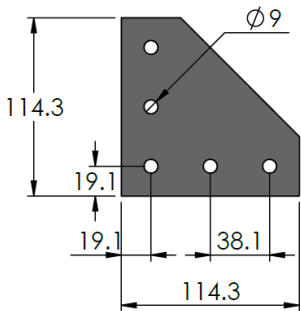
US0170505



US0170507



US0170506



Joining Plates

Part #	Series	Description	Thickness
US0170505	40	Corner Joining Plate - 5 Hole	6.35mm
US0170507	28	Corner Joining Plate - 5 Hole	6.4mm
US0170506	1.5"	Corner Joining Plate - 5 Hole	6.35mm
US0170509	20	Junction Angle Plate	4mm
US0170510	1.5"	Corner Cutout Plate - 5 Hole	6.35mm
US0170511	40	T - Joining Plate - 5 Hole	6.4mm
US0170599	1.5"	T - Joining Plate - 5 Hole	6.4mm
US0170512	28	T - Joining Plate - 5 Hole	3.2mm

MATERIAL: ALUMINUM

FINISH: CLEAR ANODIZED

REQUIRED HARDWARE: (Hardware NOT Included)

3.2mm THK. = M8x12BHCS

4mm THK. = M8x14BHCS

6.4mm THK. = M8x16BHCS

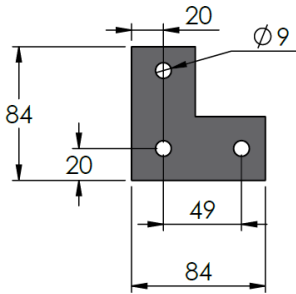
EACH USED WITH M8 SECURITY WASHER AND M8 T-NUT

BHCS = Button Head Cap Screw

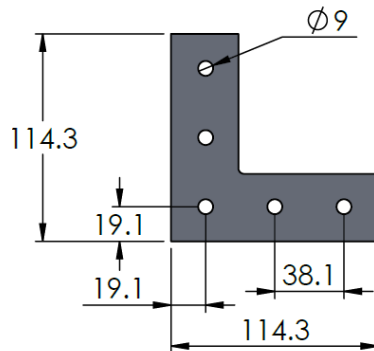
SV2102V = M8 Push-in T-Nut

US0170509

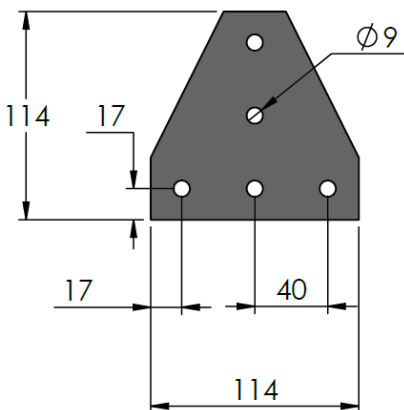
4mm THICK



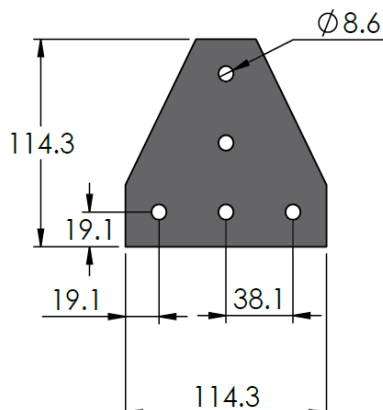
US0170510



US0170511

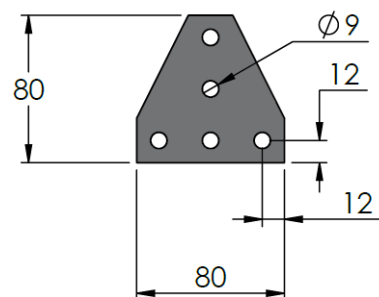


US0170599

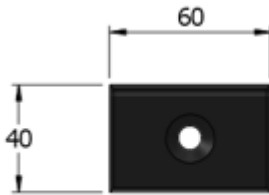


US0170512

3.2mm THICK



US0170622



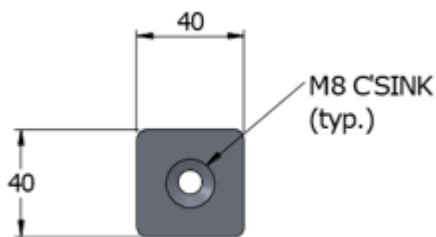
Material: Black ABS
Required Hardware:
 6.4 mm THK = M8 x 16 FHCS
 FHCS = Flat Head Cap Screw

Joining Plates

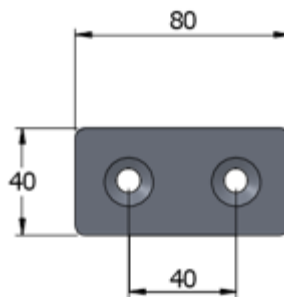
Part #	Series	Description	Thickness
US0170600	40	1 - Hole Strap	6.4mm
US0170601	40	2 - Hole Strap	6.4mm
US0170602	40	Attachment Plate, 4 - Hole	6.4mm
US0170603	40	Attachment Plate, 2 - Hole	6.4mm
US0170622	40	Black End Cap for Wire Mesh Profile	6.4mm

Material: Aluminum
Finish: Clear Anodized
Required Hardware:
 6.4 mm THK = M8 x 16 FHCS & SV2102V
 FHCS = Flat Head Cap Screw
 SV2102V = M8 Push-in T-Nut

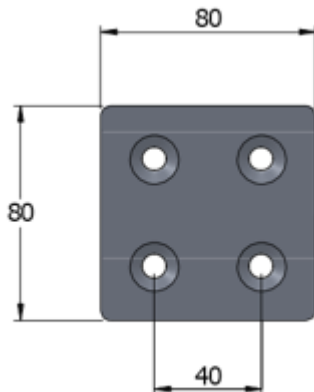
US0170600



US0170601



US0170602



US0170603

