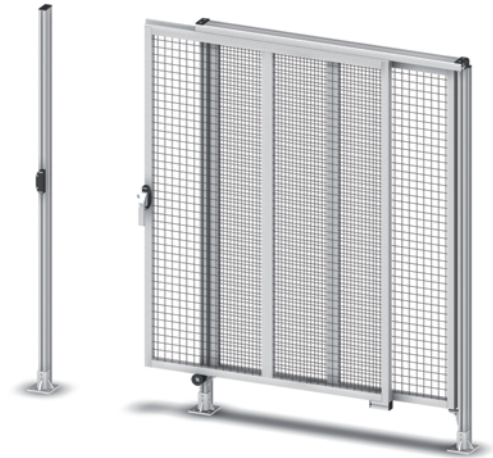


Sliding Door Kit, with superstructure



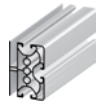
Sliding Door Kit, without superstructure



40



40 90°



40 180°

Mesh Guarding Profiles 40



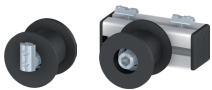
40 x 40, left

40 x 40, right

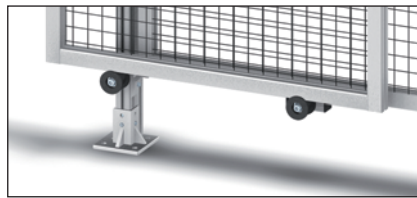
40 x 80, left

40 x 80, right

Door Latches



Stabilising Rollers



Protection Wall Lock



Metal Foot



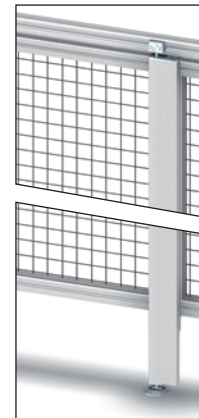
Hinge 40 Al, natural



for double door



for single door



Catch Plate



Set Of Chute Bolts for doors

Protection Wall Latches



Angle 40 x 60



Angle 60 x 70



Bolt G-Type



Holder, adjustable