

PLAYHOUSE

A DESIGNER GIVES THIS SOUTH BEACH
CONDOMINIUM AN INDUSTRIALIZED MAKEOVER
WITH INTERACTIVE ART AND VINTAGE FURNISHINGS

DESIGN BY LUIS PONS, APONWAO DESIGN BY LUIS PONS D-LAB, MIAMI, FL
TEXT BY SAXON HENRY
PHOTOGRAPHY BY MORIS MORENO, MIAMI, FL



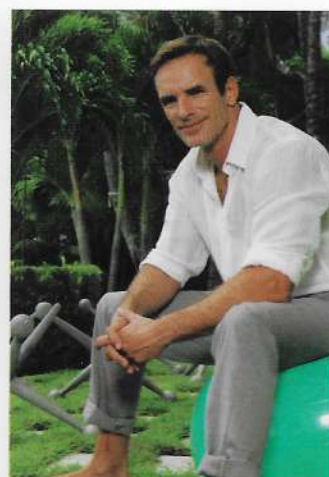
The cascading metal beads delineating this area are fitted with magnetic lights that can be moved at will. Ingo Maurer pendants hang above a 1940s table and black-vinyl and wood chairs.



LEFT: An interactive mesh magnetic art piece from designer Luis Pons' Mutables collection dances along the entrance wall to the great room, where two Americana red leather chairs from the 1940s strike a pose.

Homeowner Ricardo Dunin applauds designer Luis Pons for his ability to think outside the box while introducing practicality, a level of the paradoxical that is rare in a designer but is a hallmark of Pons' work. In fact, Dunin so enjoys the playfulness of the environments that Pons creates, he decided to turn him loose on his Meridian condominium in South Beach, Fla. "There's a big wow factor with Luis' work," Dunin says. "I like that his spaces invite people to come in and play. It's almost as if my condo is one big piece of interactive art."

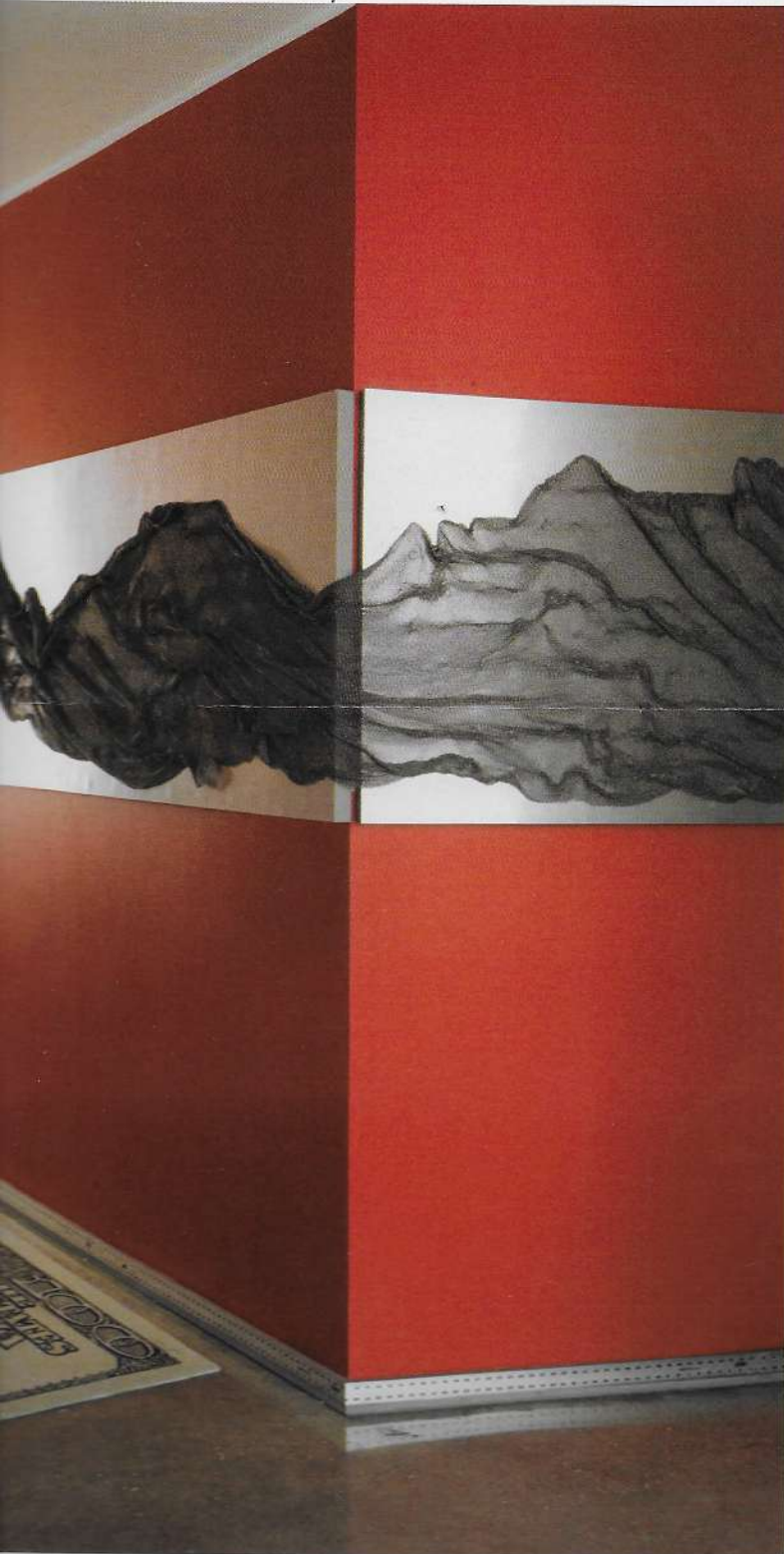
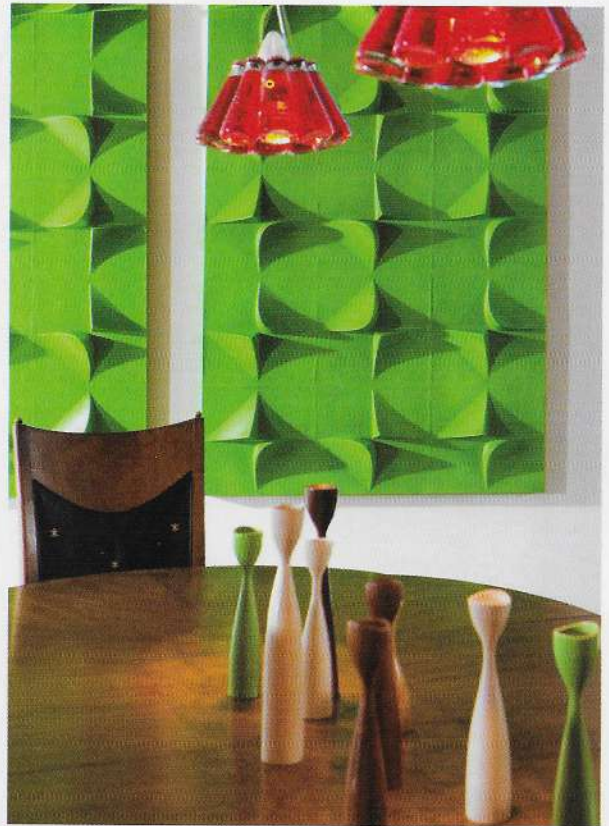
Pons, a native of Venezuela, attributes his whimsical nature to growing up in Latin America. "We didn't produce things the way other countries did, so we



ABOVE: Pons' playful design sense was the perfect match for one Miami Beach condominium owner.

RIGHT: Mioculture's 3-D green wall covering as art offers a sculptural and colorful element in the dining area. Pons' ability to achieve sophistication through simplicity is evident in the candleholders on the table.

BELOW: Textural wall art lends a warm counterpoint to the ACE hardware store aluminum rulers that run along the baseboards of the foyer walls. The area rug, made by enlarging a \$100 bill, adds a playful element.




had to think about the materials we had at hand and discover how to use them in different ways," he says. "Often, that meant that we inadvertently gave mundane materials a certain dignity."

An example of this philosophical bent is Pons' choice for the baseboards throughout — metal rulers that the designer bought at a hardware store. "One of the things I love to do is to give things new meaning," he says. "I have a habit of decontextualizing things by taking an element and giving it a twist."

The experiential aspects of the interiors begin the moment the front door opens to reveal a long swath of metal mesh fabric undulating along a steel datum that runs the length of the foyer. "It adds whimsy," Pons says. "It has humor and joy to it because it can be manipulated by whomever is walking through the hallway."

He accomplished this malleability by placing a grid of magnets behind the metal panels, which makes the fabric an interactive mural or 3-D wall covering.



The boxes on the wall in the foyer slide for that interactive ingredient that Pons loves. The rounded wooden elements placed on and in them are cooking tools used by natives of the Brazilian Amazon.



"WE HAD LOADS OF FUN SHOPPING FOR THE VINTAGE FURNITURE," PONS SAYS. "THERE WAS SO MUCH ROOM TO BE CREATIVE WITH THIS PROJECT."





To lend warmth to the main living areas, Pons helped Dunin choose vintage furnishings and selected several architectonic elements to serve as an art collection that gives a nod to Dunin's profession as a developer. "I'm a freak for vintage furniture," Pons says. "Because each piece has a past, it brings memory and soul with it."

› Pons carries this scheme through to the dining area by enclosing the 1940s American table and chairs set within lighted, screen-like ephemeral "walls." The lighting system, made of cascading strings of tiny metal beads from the designer's Metal Rain collection, adds another element of fun, as the light fixtures can be moved around at will.

Architectural artwork and accessories await Dunin around every corner, with an industrial 1930s floor lamp in the living area, and floor sculptures and art pieces that have a past life as wood gear from the year 1910.

In the master bedroom, the designer continued the industrial yet playful feel with an unfinished concrete ceiling and a custom-designed headboard from his Frame collection, which he created using moldings made of foam rubber.

Pons' inventive imagination and unorthodox ways created the perfect adult-sized playhouse for this homeowner living in South Florida's greatest playground.

LEFT: A Moroso chair and ottoman designed by Patricia Urquiola add color to the living area, where industrial molds hang above the sofa. Cocktail tables hold metallic filings that shift about as the magnets above are moved.

FAR LEFT: Pons' eye for vintage finds rewards his clients with personable treasures, such as the black leather chair in the living area that adds masculinity to the pale space. Wood gear from 1910 hangs above the console.

Pons left the ceiling in this master bedroom unfinished for the texture it brings to the space. He created the illusion of a headboard with moldings made of foam rubber, an installation that appears in the designer's Frame collection.



SOURCES

FOYER

Red armchairs - Visiona, Miami, FL
Occasional table - Owner's Collection
Floor lamp and floor sculptures - Orion Vintage, Miami, FL
Mesh magnetic wall covering - Custom designed by Luis Pons D-Lab, Miami, FL
Fabricated by Aponwao Design, Miami, FL
Baseboards, area rug and shelving installation in hallway - Custom designed by Luis Pons D-Lab for Aponwao Design, Miami, FL
Area rug fabricated by Creative Matters, Toronto, Ontario, Canada
Shelving installation fabricated by Renato Medvesic, Miami, FL

DINING AREA

Table and chairs - Aubéry, Inc., North Miami
Pendants - Ingo Maurer GmbH, Luminaires, Miami, FL
Centerpiece sculptures - GLO, Miami, FL
Green wall covering artwork - Mio Culture, MIO Company LLC, Philadelphia, PA
Chain installation - Custom designed by Luis Pons D-Lab, Miami, FL
Fabricated by Aponwao Design, Miami, FL
Area rug - Pottery Barn, Miami Beach, FL

LIVING AREA

Sofa and love seat - Meridiani Collection, Miami, FL
Red chair and ottoman - Moroso, S.p.A., Udine, Italy
Black chair - Owner's Collection
Cocktail tables and light fixtures - Custom designed by Luis Pons D-Lab for Aponwao Design, Miami, FL
Console - Aubéry, Inc., North Miami, FL
Occasional table, and artwork above console and above love seat - Orion Vintage, Miami, FL
Lamp - Visiona, Miami, FL
Drapery sheers - Costa Window Treatments, Inc., Miami, FL

Spheres on floor next to sofa and floor sculpture behind sofa - Casa Curuba, Caracas, Venezuela

MASTER BEDROOM

Bed and light fixture - Tizio Lamps, Luxe Cable + Light, Miami, FL
Headboard - Custom designed by Luis Pons D-Lab, Miami, FL
Fabricated by Aponwao Design, Miami, FL
Bedside tables - Orion Vintage, Miami, FL
Drapery sheers - Costa Window Treatments, Inc., Miami, FL
Sliding glass doors - Renato Medvesic, Miami, FL
Area rug - Pottery Barn, Miami Beach, FL

"ONE OF THE THINGS I LOVE TO DO IS TO GIVE THINGS NEW MEANING,"
PONS SAYS. "I HAVE A HABIT OF DECONTEXTUALIZING THINGS
BY TAKING AN ELEMENT AND GIVING IT A TWIST."