



LIVING LARGE!

Sleek and small? So yesterday. Maximize your manse's wow-factor with these attention getters

BY SAXON HENRY AND RICHARD MARTIN

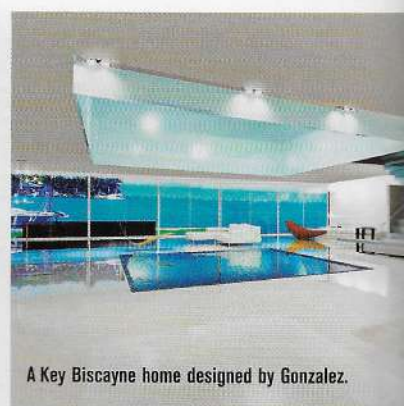
Subtlety isn't one of Miami's strong suits. If you want to make it in the Magic City, you've got to go big. Waaaay big. Which is why we've set our lens to wide and found eye-popping pieces to fill your mind-blowing manse or copiously proportioned condominium. (Trust us, the delivery surcharge will be well worth it on these haute

but heavy-duty items). We've also tracked down the hot-shot designers who create oversized rugs, chandeliers, sofas and more for your flaunting-it-up style. Plus, we've unearthed large-scale photography and sculpture that will stand tall on the most airiest expanses. Finally! Now you can go big *and* go home.



MOD COUPLE: James and Miriam Duncan

<< BOLD IS BEAUTIFUL!
WHEN AN ASPEN CLIENT ASKED JAMES AND MIRIAM DUNCAN TO CREATE AN 18-FOOT SEMI-CIRCULAR SOFA, THEY EVOKED THE MIGHTIEST OF THE GODS AND GAVE HIM THE ATLAS SOFA. "TOO MANY DESIGNERS TAKE 'LARGER THAN NORMAL' AS LICENSE TO PRODUCE HUMOROUS DESIGNS," SAYS JAMES DUNCAN. "WHO WANTS TO BE TOLD THE SAME JOKE EVERY DAY? IT'S GREAT IF YOU ARE WITTY, BUT LESS SO WHEN YOUR FURNITURE IS."



A Key Biscayne home designed by Gonzalez.

"I am interested in creating architecture that is experiential, highly tactile. When designing I worry about the small. The details and the proportions of the space sometimes down to the millimeter make all the difference." —Architect Gonzalez, currently designing a 20,000-sq-ft \$50-million house in Miami.



Finner and Busso's bathroom at Casa Deco Art

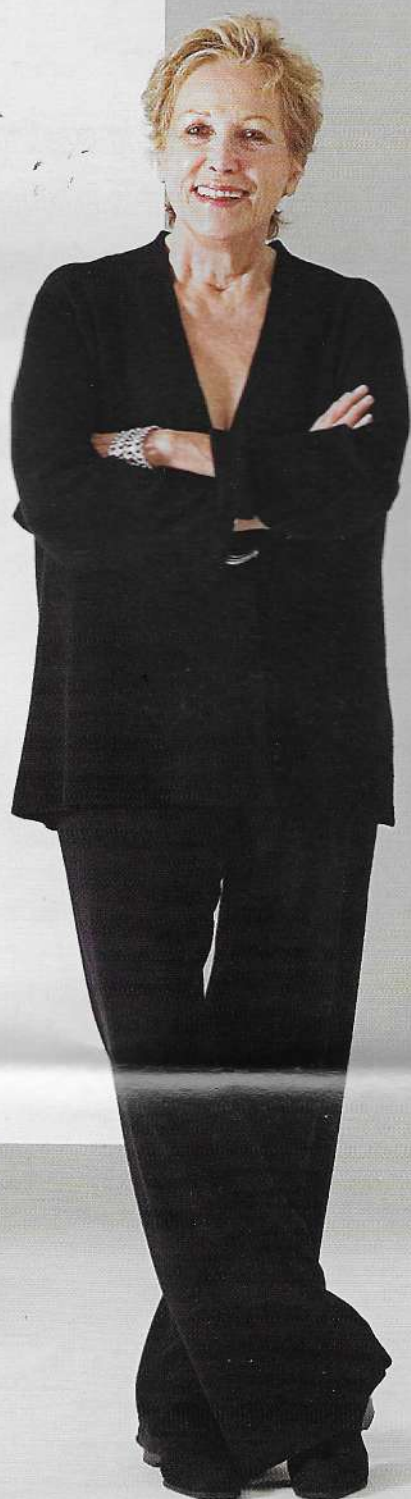
TILED IN

"Bold design elements only work if there's enough room to breathe," says designer Pfuner of the black-and-white bathroom. Partner Eduardo Busso designed at Casa Deco Art using Karma glass tiles from Trend USA. "The tiles, with their special mirror-like backing, Kharma adds a dramatic depth," says Marcello Becchi, president of Trend USA. Just what a sprawling project needs—the illusion of more space! (Pfuner Design, 171 N.W. 36th St., 305.571.8400; Trend USA Ltd., 2700 Biscayne Blvd., 305.571.8400)



GET IT TWISTED

Kenneth Cobonpue's native Philipino designs inspire his creations. His whimsical and playful Noodle sofa, made of rattan shoots over a powder-coated steel frame and mounted to a base (\$4,550) debuts at the Salone Internazionale del Mobile in Milan April. (Janus et Cie, 3930 N.E. 2nd Ave., Suite 106, 305.438.0005). Getting hurt?



HIGH ROLLER: Iran Issa-Khan stands tall before one of her large-scale works.

<< BIG SHOTS

Iran Issa-Khan has few peers in fashion photography. Her iconic shoots with Iman, Paulina Porizkova and Andie MacDowell set a new standard for sexy elegance and turned her into an in-demand celebrity portrait photographer. When Issa-Khan moved to the tropics nearly a decade ago, she embraced a quieter way of working, producing grand-scale photographs of shells and coral. "I've been opened up to nature since living in Miami, and I think few people take the time to look around," she says. "It's why I make my photos so large—you can't ignore them!" Available at 180 N.E. 39th St., Suite 221, 305.573.4614.



HOT SEAT

The Living Tower by Vitra, inspired by '60s design, is a massive, three-dimensional and whimsical variation on the love seat. As much sculpture as furniture, the Verner Panton-designed tower (\$13,010 at Vitra at 4141 Design, 4141 N.E. 2nd Ave., 305.572.2909, www.4141design.com/vitra) stands nearly seven-feet tall and commands a room. Challenging the tower for floor space at Vitra is Ronan and Erwan Bouroullec's nearly eight-foot-long Alcove sofa (\$8,280), which can comfortably seat the starting five of a basketball team plus a few backups.



Galloni's Silent Soul.

STANDING OVA

Silent Soul, a wood-and-marble sculpture by Oriano Galloni, may not make much noise, but it is rather demanding. At 7 feet tall, the piece requires a large space and a hefty budget (\$13,010 at Lurie Gallery, 3900 N.E. 30th St., 305.573.7373, www.luriegallery.com). Then again, what it lacks in volume it makes up for in presence. "My dream is to construct, create a logical sense to my ideas," Galloni says, and this stately work makes his dream's come true.

"When I'm designing a small room, one piece is the emphasis; when the room is large, the marriage of all the pieces is the emphasis."

—Interior designer Anna Suarez-Bonilla

HUGE TUBE

THE WORLD'S LARGEST TV HASN'T HIT SHELVES WHEN IT DOES, STAND ABOUT 20 TO 25 FEET TALL. THE RECOMMENDED DISTANCE FOR PANASONIC'S 100-INCH BEHEMOTH. SIX FEET AND 11 FEET WIDE. THIS BILLION-DOLLAR SIZED MODEL IS PERFECT FOR THOSE WHO THINK THERE'S NO SUCH THING AS TOO BIG.

WALL DESIGNS >>

THE BIG PICTURE: FORGET THE TEDIOUS REPEAT OF YOUR FAVORITE WALLPAPER PATTERN. THINK BIG WITH THESE BLOWN-UP DESIGNS. REMEMBER THOSE LUSH NATURE WALL SCENES FROM THE '70S? THE BRITISH COMPANY SURFACE VIEW EXPANDS ON THAT KITSCHY CONCEPT WITH LARGE-SCALE PHOTOGRAPHIC MURALS AND DESIGN THAT GOES UP LIKE WALLPAPER. THINK WILD HORSES RUNNING. A CALLA LILY AS BIG AS YOUR BACKYARD. ROMAN SCULPTURE. MARITIME CHARTS AND QUIRKY EPHEMERA. OR, CREATE YOUR OWN MOSAIC MURAL WITH ITALIAN GLASS TILE (IT ISN'T JUST FOR THE SHOWER ANYMORE). SICIS CALLS IT PIXEL ART, AND OFFERS A COLLECTION OF VIBRANT, RIGHT-NOW GRAPHICAL DESIGNS TOO GOOD-LOOKING TO HIDE IN THE BATHROOM.

FROM PARIS WITH LOVE

When the Baccarat mansion redecorated its Paris dining room earlier this year, the larger-than-life house of style tapped Tai Ping to create a sumptuous, gold silk-stitched 18x40-foot rug to play off the room's inherent grandeur. Steal the look with a smaller version of the same pattern—Fin de Règne—for your own crystal palace.



The Paris dining room at the Baccarat mansion.

MIND GAMES

THE ASIAN DESIGN IS FAMILIAR, BUT THE MATERIAL OFFERS A SENSORY JOLT. THE TWIST ON THESE COMPOUND WARDROBES IS STAINLESS STEEL. WATCH FOR THE REFLECTION OF PUZZLED GUESTS GAZING UPON THESE UNUSUAL PIECES. (\$17,500 EACH, AVAILABLE EXCLUSIVELY AT JALAN JALAN COLLECTION, 3921 N.E. 2ND AVE., 305.572.9998)



Stainless steel wardrobe at Jalan Jalan.

FLOWER POWER: Perroquet Rouge wallpaper from Surface Views' V&A G.D. Ehret Botanical collection.



*"The scale of furnis
and objects change
from small to large
One needs to put o
'Think Big' cap on
working on substan
environments."*

—German-born Miami interior designer Const



GAZEB-OH!

When Stephanie Odegard was introduced to her Mughal Collection (which are also debuting at the 2 Furniture Fair next month), her carpet, which is colossal jewelry to was a big hit. Also impressively st the Baradari Garden Pavilion, wh carved in India of white marble an pieces. The Pavilion is entirely cus priced upon request; the Navaratr \$14,500 for a 9x12-foot carpet, b says she's already received custom ultra-large sizes from all over the v Miami showroom (3621 N.E. 305.576.1280. www.odegardinc.com

LIGHT TOUCH

THE BIGGEST THING TO NOTE ABOUT THE ITALIAN LIGHTING COMPANY T TRESOR CHANDELIER ISN'T ITS PRICE (\$15,950), ITS WEIGHT (110 LBS.) OR SIZE (31.5-INCH DIAMETER). NO, THE BIG THING HERE IS THE IDEA: 3,9 COINS WELDED INTO PATTERNS BY HAND, THEN FINISHED IN GOLD O LEAF. NICOLAS TERZANI SAYS THAT THE CUSTOM-MADE LAMP'S ILLU QUALITIES RENDER ROOM SIZE MEANINGLESS. "WHETHER IT'S LARGE O PUT ONE TRESOR IN AN EMPTY SPACE AND YOU DON'T NEED ANYTHING