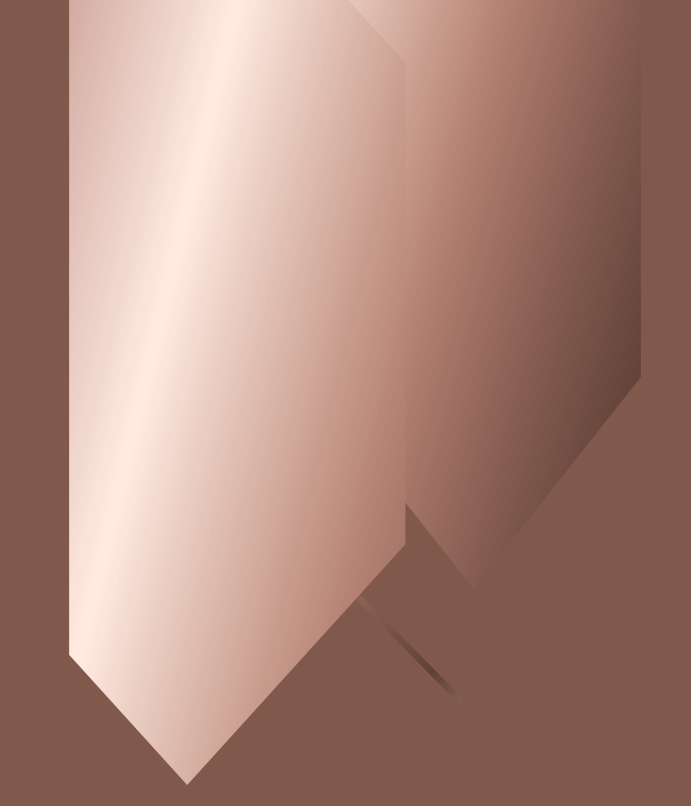


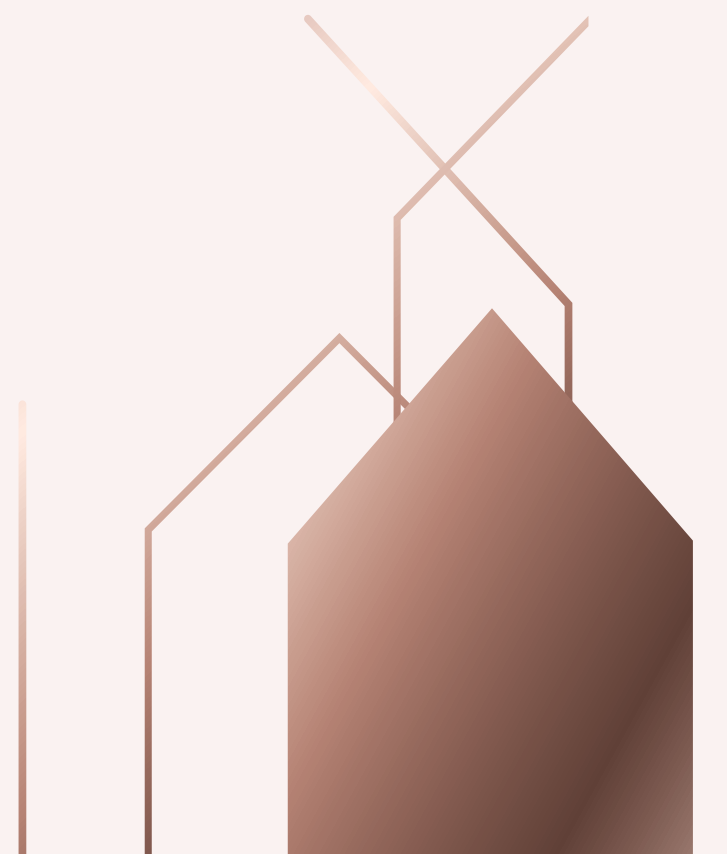
# EON

— EYE OF NOIDA —





FOR THOSE WHO  
CAN SEE HOW  
THE FUTURE  
WILL UNFOLD.



  
FAIRFOX



ARTISTIC IMPRESSION

The future is full of opportunities, and it belongs to those who can see it today. Those who can see what will be rather than what is now.

The life we always aspired for, the life we have always wanted to live is not far. It's right in the Eye of Noida.

Presenting

**E N**  
EYE OF NOIDA

# MULTIPLE POSSIBILITIES WITH ONE ADDRESS

Welcome to EON, a perfect combination of retail and IT/ITES office space that matches the best in the world. It is an innovative lifestyle destination with one-of-a-kind multi-sensory experiences shaped by inspirational architecture and world-renowned retailers.

1 IT/ITES-enabled corporate park spread across 55239 Sq Mtr.

- 4 phase development program comprising
  - High-end retail
  - Elegant IT/ITES office spaces

- Grade 'A' Building

2 USGBC gold certification compliant development

- Green building



ARTISTIC IMPRESSION

## CIRCULATION

All vehicular circulation is designed for optimal safety and minimal collisions between pedestrian and vehicular movement. The whole complex is connected on the surface as well as an elevated network of skywalks to enable cross-development, barrier-free transit of shoppers, and office goers alike. From the parking floor to the surface, there is an open green plaza with a sculptural staircase



## PLAZA

Four periphery plazas are designated to separate stages with smartly designed drop-off and outdoor, multi-use paved and semi-green zones. One central, 42-meter-wide green avenue, runs across the entire development lined by a variety of outlets

# A PROMINENT LOCATION



EON is located in the bustling sector 140-A Noida. With its unique dimensions and dynamic facade, this one-of-a-kind architectural landmark will enhance the spirit of Noida. This mixed-use complex is a triumph of creativity and craftsmanship, featuring an office tower and high-street retail zone along with a supercharged fashion and culinary experience.

The location is easily accessible:

- Walking distance from metro Station/FNG/Noida Expressway
- 20 minutes' drive from Jewar International Airport
- 15 minutes' drive from DND Flyway
- 2-5 minutes' drive from nearest Hospital (Felix/Jaypee Hospital)

# SPACE FOR HIGH-END RETAIL

Imagine a retail space where everything is unique, where you can discover and experience tomorrow's trends. As a retailer, you can showcase your brand over different floors. There is easy access to the retail area with pedestrian plazas leading to smaller streets and interactive spaces. For innovative businesses, upcoming retailers, and many more, you get an ideal retail space with EON.



**EON**  
— EYE OF NOIDA —



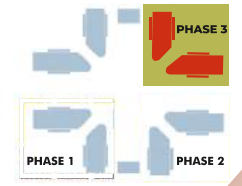
# MORE THAN JUST A PLACE TO WORK

The EON office space is designed with a clear objective in mind: to create a distinctive and energetic environment that everyone who works there can enjoy. Here is a development that places sociability and networking at its very heart. One that encourages interaction and exchange between companies through shared spaces.



**LEGEND**

1. Vehicular Entrance
2. Vehicular Exit
3. Road to Ramp
4. Road to Shopping Plaza
5. Shaded Avenue
6. Green Boulevard
7. Central Inner Grove with Mound
8. Shopping Boulevard
9. Pedestrian Shopping Plaza
10. F&B Kiosk
11. Double Height Entrance Lobby (30 ft)
12. Project Signage
13. Food Terraces
14. Pedestrian Crossovers
15. Sky Walk
16. Multifunctional Spaces
17. Kid's Play Area
18. Sand Pit
19. Amphitheater
20. Performance Deck
21. Landscape Terraces
22. Tree Bosque Seating
23. Vehicular Boulevard
24. Pedestrian Boulevard
25. Pedestrian Entry
26. Sculptural Staircase-basement Connection



# SITEMAP

All specifications, designs, layout, images, conditions are only indicative and some of these can be changed at the discretion of the builder/architect/authority. These are purely conceptual and constitute no legal offerings. 1sqm= 10.764 sq. ft.

# BLOCK A

## GROUND FLOOR PLAN



## FIRST FLOOR PLAN



# BLOCK A

## SECOND FLOOR LVL



## 3RD, 4TH, 5TH FLOOR

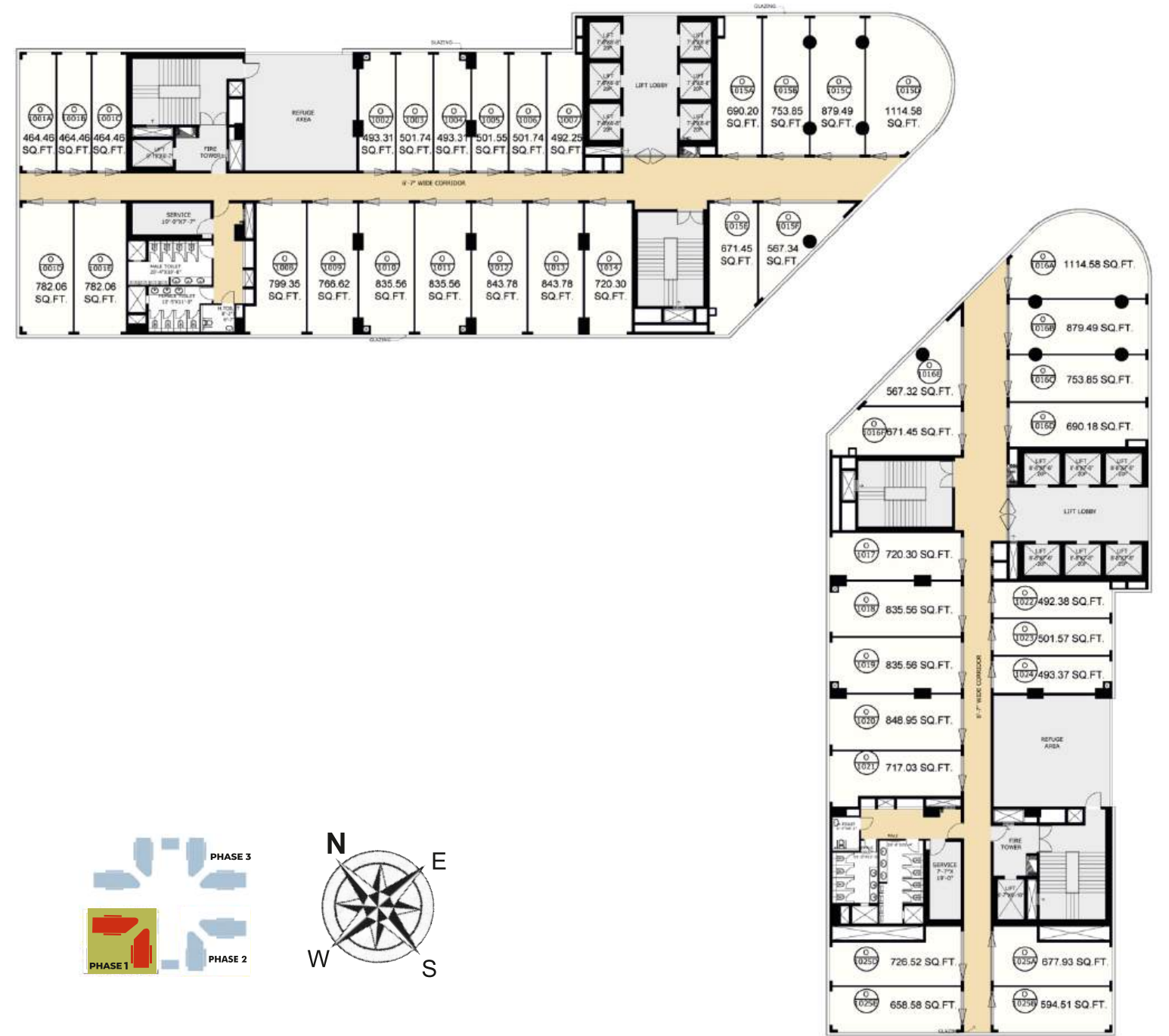




# BLOCK A

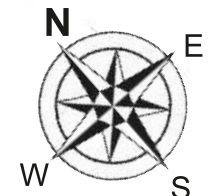
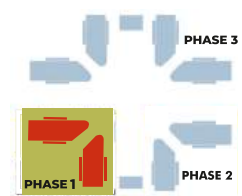
## 8TH, 9TH, 11TH, 12TH, 16TH, 18TH, 19TH, 20TH & 22ND TYPICAL FLOOR PLAN

## 10TH, 13TH, 17TH, 21ST FLOOR PLAN



# BLOCK A

## 14TH & 15TH FLOOR PLAN



All specifications, designs, layout, images, conditions are only indicative and some of these can be changed at the discretion of the builder/architect/authority. These are purely conceptual and constitute no legal offerings. 1sqm= 10.764 sq. ft.

# BLOCK E

## GROUND FLOOR PLAN



## FIRST FLOOR PLAN



# BLOCK E

## 2ND FLOOR PLAN



## 3RD FLOOR PLAN



# BLOCK E

## 4ND & 5TH FLOOR PLAN



## 6TH FLOOR PLAN



# BLOCK E

## 7TH FLOOR PLAN



## 8TH, 9TH, 11TH & 12TH FLOOR PLAN



# BLOCK E

## 10TH FLOOR PLAN

## 13TH FLOOR PLAN



All specifications, designs, layout, images, conditions are only indicative and some of these can be changed at the discretion of the builder/architect/authority. These are purely conceptual and constitute no legal offerings. 1sqm= 10.764 sq. ft.





E-N 1

SALE  
40%  
OFF

OFFICE  
DEVELOPMENT

E-N 1  
THE OFFICE

E-N 1  
THE OFFICE

# BLOCK D

## GROUND FLOOR PLAN



## FIRST FLOOR PLAN



All specifications, designs, layout, images, conditions are only indicative and some of these can be changed at the discretion of the builder/architect/authority. These are purely conceptual and constitute no legal offerings. 1sqm= 10.764 sq. ft.

# BLOCK D

## SECOND FLOOR PLAN



## 3RD, 4TH, & 5TH FLOOR PLAN



All specifications, designs, layout, images, conditions are only indicative and some of these can be changed at the discretion of the builder/architect/authority. These are purely conceptual and constitute no legal offerings. 1sqm= 10.764 sq. ft.

# BLOCK D

## 6TH FLOOR PLAN



## 7TH FLOOR PLAN



All specifications, designs, layout, images, conditions are only indicative and some of these can be changed at the discretion of the builder/architect/authority. These are purely conceptual and constitute no legal offerings. 1sqm= 10.764 sq. ft.



# BLOCK D

## 11TH FLOOR PLAN

## 12TH FLOOR PLAN

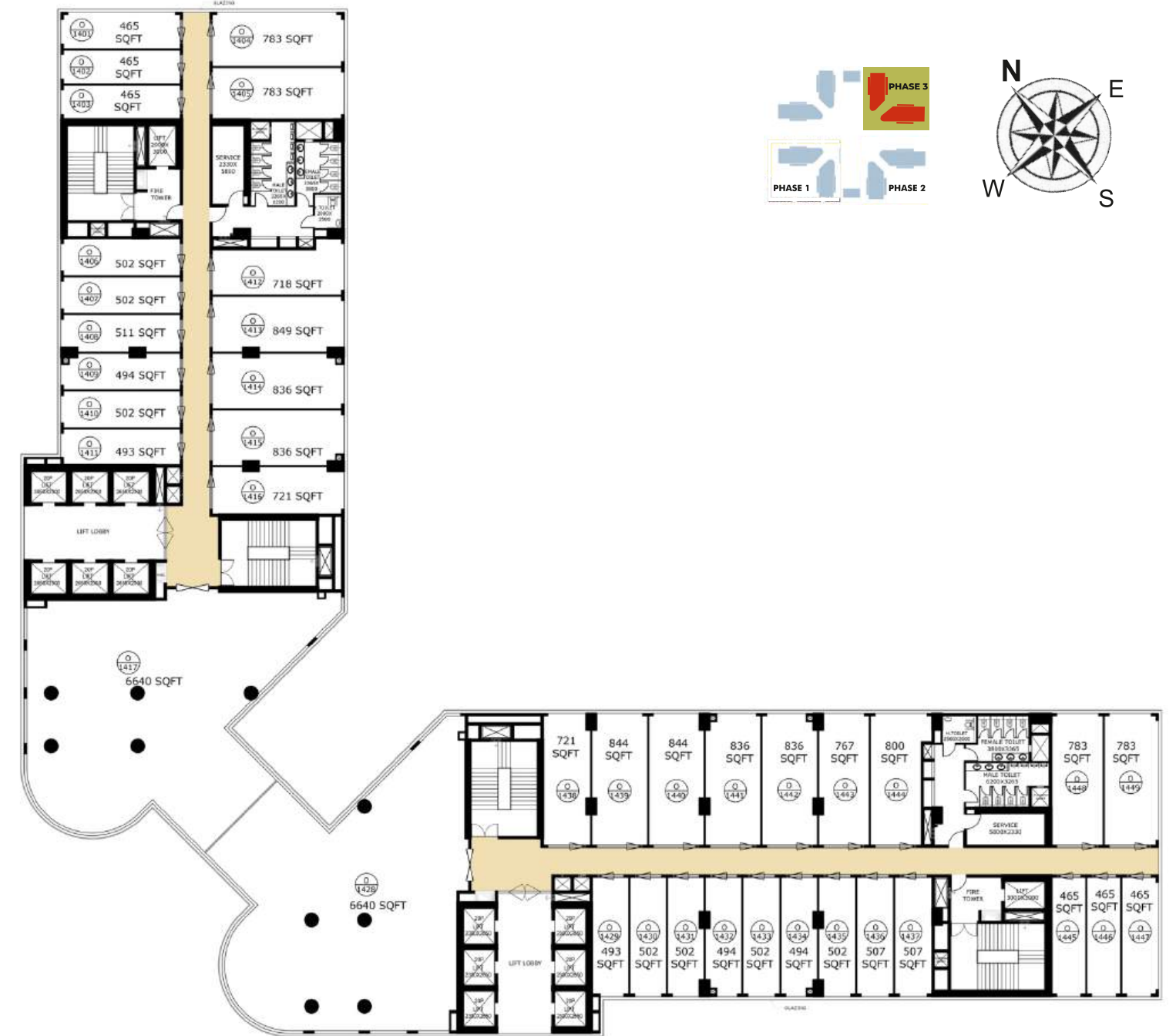


All specifications, designs, layout, images, conditions are only indicative and some of these can be changed at the discretion of the builder/architect/authority. These are purely conceptual and constitute no legal offerings. 1sqm= 10.764 sq. ft.

# BLOCK D

## 13TH FLOOR PLAN

## 14TH FLOOR PLAN



All specifications, designs, layout, images, conditions are only indicative and some of these can be changed at the discretion of the builder/architect/authority. These are purely conceptual and constitute no legal offerings. 1sqm= 10.764 sq. ft.

# BLOCK D

## 15TH FLOOR PLAN



# BLOCK B

## GROUND FLOOR PLAN



## FIRST FLOOR PLAN



# BLOCK B

## SECOND FLOOR PLAN

## 3RD, 4TH, & 5TH FLOOR PLAN

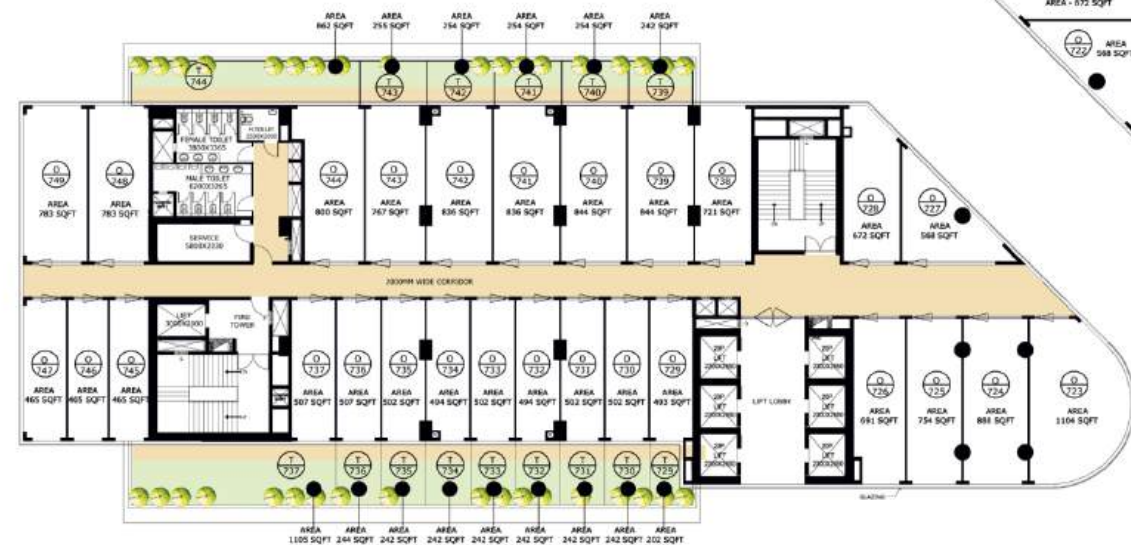
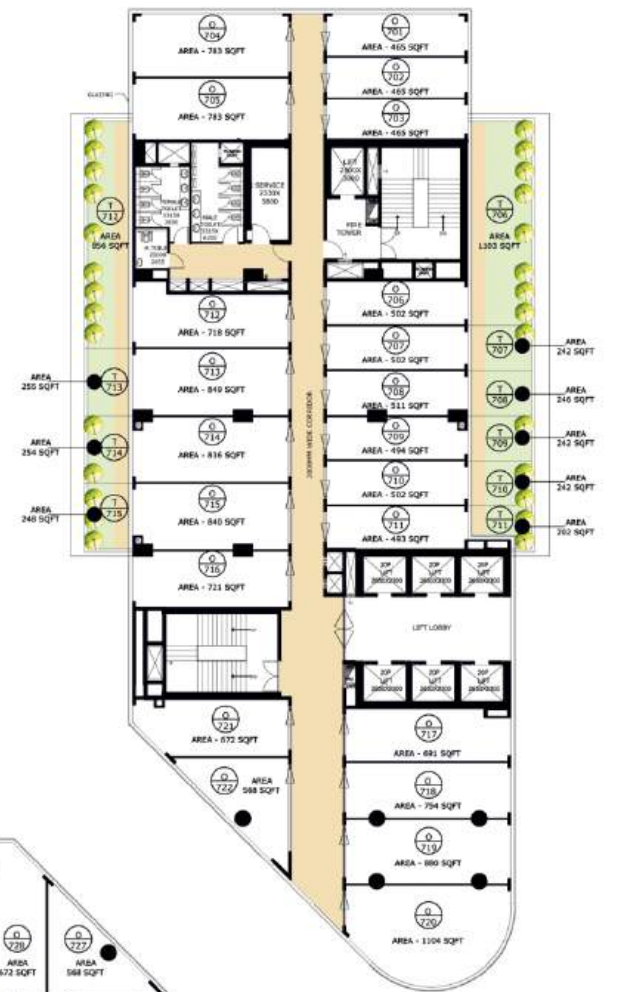
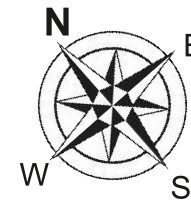
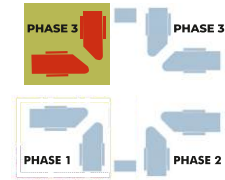
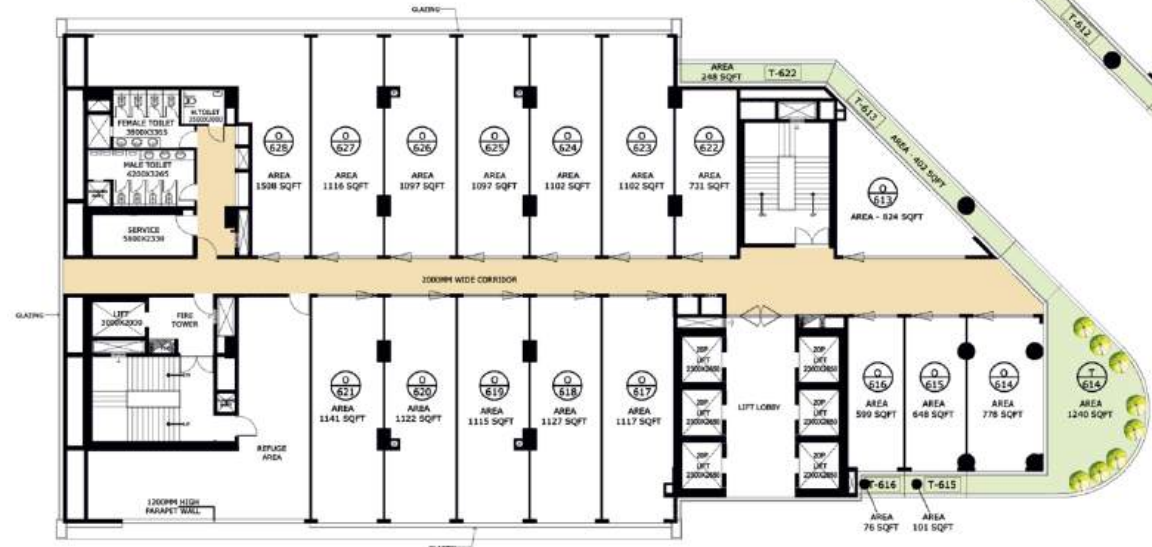
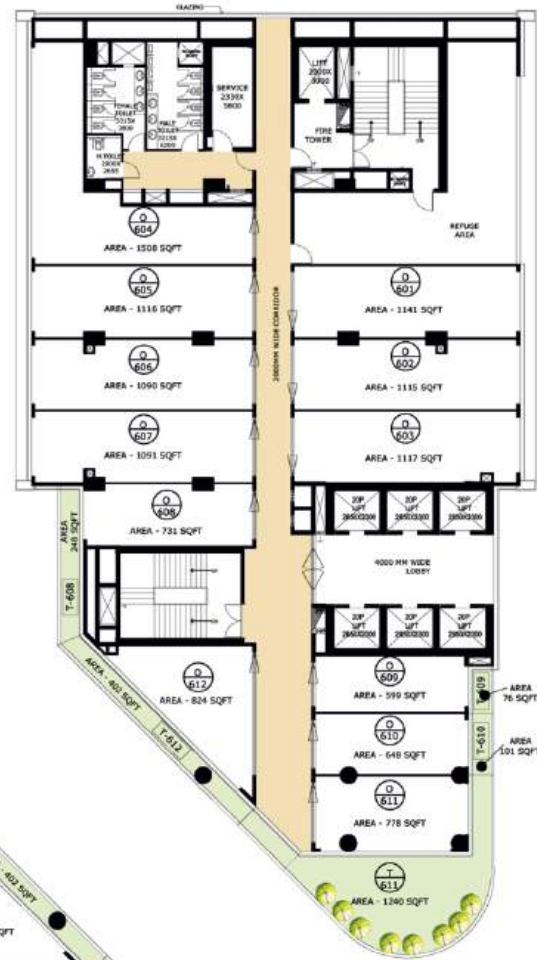
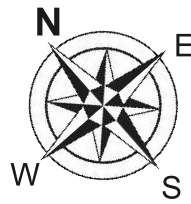
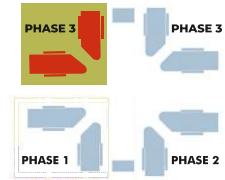


# BLOCK B

## 6TH FLOOR PLAN

## 7TH FLOOR PLAN

1:500 1:200 1:100 1:50 1:25 1:10 1:5

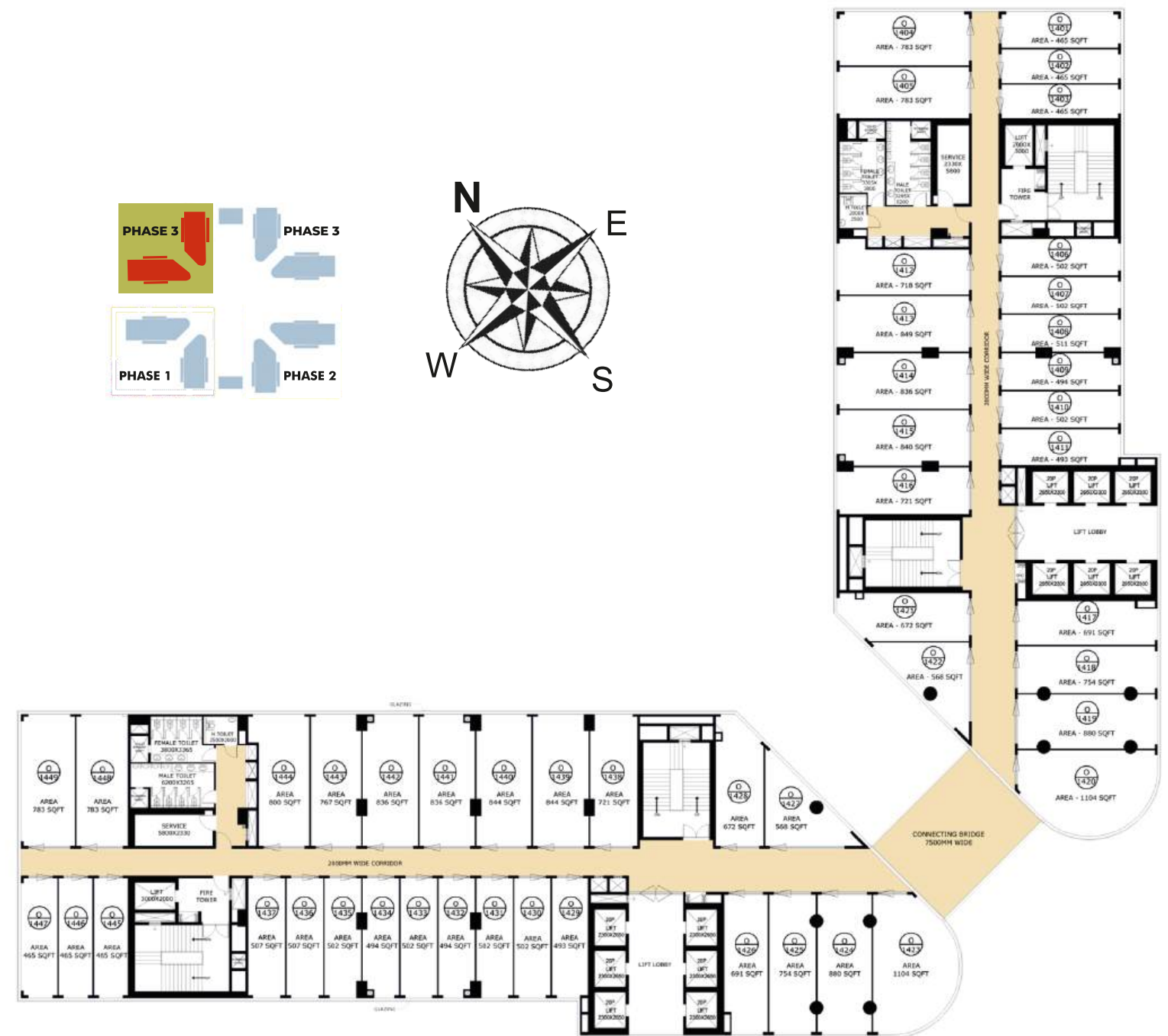
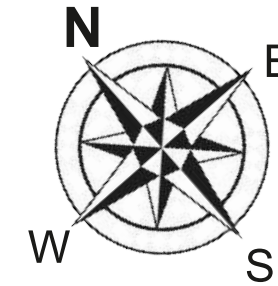
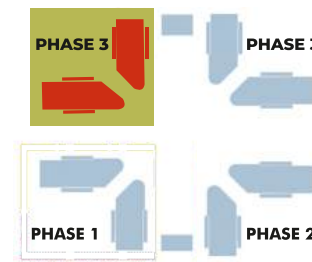


All specifications, designs, layout, images, conditions are only indicative and some of these can be changed at the discretion of the builder/architect/authority. These are purely conceptual and constitute no legal offerings. 1sqm= 10.764 sq. ft.



# BLOCK B

## 14TH & 15TH FLOOR PLAN



All specifications, designs, layout, images, conditions are only indicative and some of these can be changed at the discretion of the builder/architect/authority. These are purely conceptual and constitute no legal offerings. 1sqm= 10.764 sq. ft.



## FAIRFOX IT INFRA PRIVATE LIMITED

A premier real estate development company whose philosophy is based on client satisfaction, execution excellence, and on-time delivery. The company is committed to growing and expanding its horizons by addressing customer needs based upon trust, transparency, and efficiency. With high levels of innovation, product quality, and customer satisfaction, the company aspires to further strengthen the brand. Our professionally managed team enables us to provide complete real estate solutions under one roof including commercial & residential properties to our clients spread across the globe.



**Phone No.: 0120 6253503**

**Email: [info@fairfoxitinfra.com](mailto:info@fairfoxitinfra.com) | Web- [www.fairfoxitinfra.com](http://www.fairfoxitinfra.com)**

**Site/Corporate Office Address: Plot No 01A, Sector 140 A, Noida, Uttar Pradesh - 201305**

**PHASE I RERA No.: UPRERAPRJ211016, PHASE II RERA No.: UPRERAPRJ716606**

**PHASE III RERA NO.: UPRERAPRJ882013 | [WWW.UP-RERA.IN](http://WWW.UP-RERA.IN)**