

J-Series

- Drainage
- Sewage
- Jet Aerator

PUMP



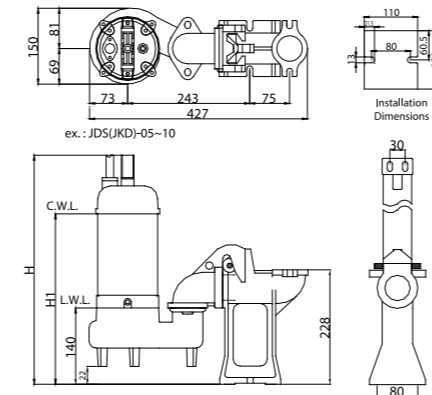
We are proud of the long term experience and know how matured in the design of pumps and pumping related equipment. The traditional and well known Taiwanese skill at manufacturing reflects in the quality of our products.



Single phase only up to 2HP.

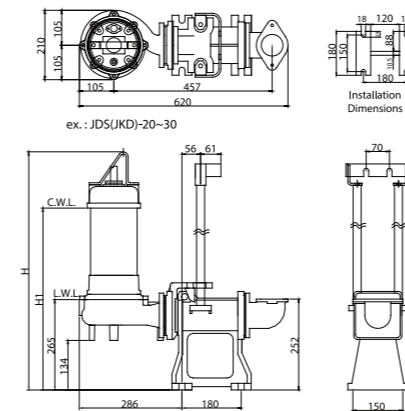
Index									
		JKS	JA	JDS	JKD	JSB	JDSK	JSG	JDS-100/150
Voltage	1PH	•	•	•	•	•	•	•	•
Type	Drainage	•	•	•	•	•	•	•	•
	Sewage	•	•	•	•	•	•	•	•
Duck Foot	Contractor	•	•	•	•	•	•	•	•
	Submersible Jet Aerator	•	•	•	•	•	•	•	•
	QS QM Cast Iron	•	•	•	•	•	•	•	•
HP	SQS SQM 304/316 SST	•	•	•	•	•	•	•	•
	QG Cast Iron	•	•	•	•	•	•	•	•
	QL-100 Cast Iron	•	•	•	•	•	•	•	•
HP	0.15	•	•	•	•	•	•	•	•
	0.2	•	•	•	•	•	•	•	•
	0.3	•	•	•	•	•	•	•	•
	0.5	•	•	•	•	•	•	•	•
	0.75	•	•	•	•	•	•	•	•
	1	•	•	•	•	•	•	•	•
	1.5	•	•	•	•	•	•	•	•
	2	•	•	•	•	•	•	•	•
	3	•	•	•	•	•	•	•	•
	5	•	•	•	•	•	•	•	•
7.5	•	•	•	•	•	•	•	•	
10	•	•	•	•	•	•	•	•	
15	•	•	•	•	•	•	•	•	

JDS/JKD with QS



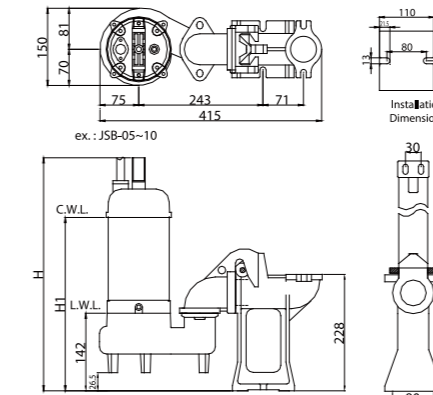
Output		Discharge		Dimensions(mm)	
HP	KW	Inch	mm	H	H1
0.5	0.37	2"	50	434	319
1	0.75	2"	50	509	367

JDS/JKD with QM



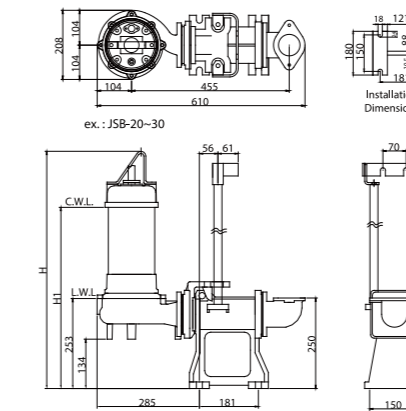
Output		Discharge		Dimensions(mm)	
HP	KW	Inch	mm	H	H1
2	1.5	2"(3")	50(80)	715	545
3	2.2	2"(3")	50(80)	735	565
5	3.7	3"(4")	80(100)	775	597
7.5	5.5	3"(4")	80(100)	815	637

JSB with SQS



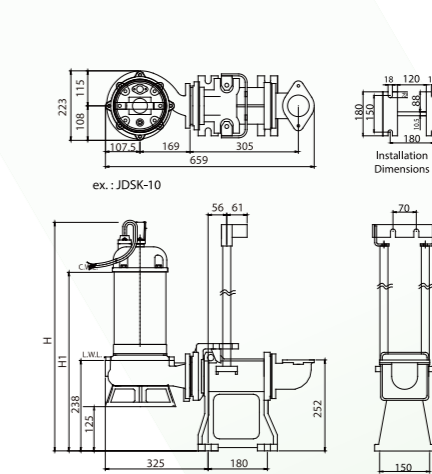
Output		Discharge		Dimensions(mm)	
HP	KW	Inch	mm	H	H1
0.5	0.37	2"	50	445	322
1	0.75	2"	50	475	352

JSB with SQM



Output		Discharge		Dimensions(mm)	
HP	KW	Inch	mm	H	H1
2	1.5	2"(3")	50(80)	660	534
3	2.2	2"(3")	50(80)	690	554
5	3.7	3"(4")	80(100)	769	604
7.5	5.5	3"(4")	80(100)	809	644

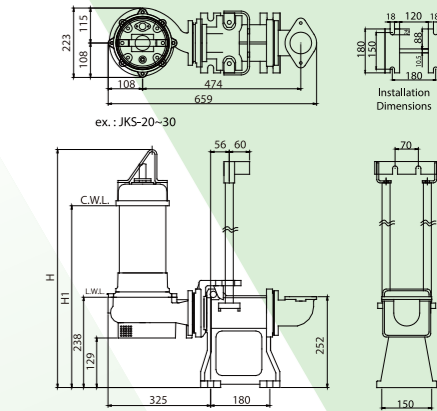
JDSK with QM



Output		Discharge		Dimensions(mm)	
HP	KW	Inch	mm	H	H1
2	1.5	2"(3")	50(80)	695	525
3	2.2	2"(3")	50(80)	715	545
5	3.7	3"(4")	80(100)	765	587
7.5	5.5	3"(4")	80(100)	805	627

Output		Discharge		Dimensions(mm)	
HP	KW	Inch	mm	H	H1
1	0.75	2"(3")	50(80)	610	466
2	1.5	2"(3")	50(80)	695	525
3	2.2	2"(3")	50(80)	715	545
5	3.7	3"(4")	80(100)	765	587
7.5	5.5	3"(4")	80(100)	805	627

JKS with QM



Output		Discharge		Dimensions(mm)	
HP	KW	Inch	mm	H	H1
2	1.5	2"(3")	50(80)	695	525
3	2.2	2"(3")	50(80)	715	545
5	3.7	3"(4")	80(100)	765	587
7.5	5.5	3"(4")	80(100)	805	627

JKS

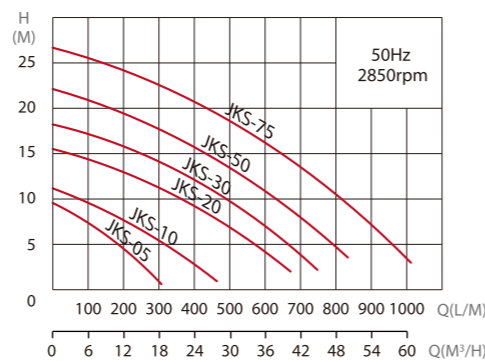
Feature

- Compact Design / light weight
- With High Efficiency Impeller
- Double Mechanical Seals
- Reliable Shaft sealing
- Automatic Operation (Optional)

Application

- Light duty / basement drainage
- Rainwater effluent
- Accumulated water drainage

Performance Curve



Type	Output		Discharge Inch	F.L.A.		Rated		Maximum		Cable M	Free Passage mm	Weight kg
	HP	KW		1ø 230V	3ø 400V	Head m	Cap. LPM	Head m	Cap. LPM			
JKS-05	0.5	0.37	2"	4	1.2	6	150	9.5	310	10	5	12.2
JKS-10	1	0.75	2"	6	2	9	150	11	450	10	5	19
JKS-20	2	1.5	2"(3")	11.3	3.5	10	360	15.5	680	10	5.5	35.7
JKS-30	3	2.2	2"(3")	-	5.2	11	450	18.5	800	10	5.5	36.8
JKS-50	5	3.7	3"(4")	-	8.6	8	700	22.5	950	10	5.5	56
JKS-75	7.5	5.5	3"(4")	-	12	12	750	26.5	1100	10	5.5	62

Materials

Mech. Seal	0.5HP~3HP: CA/CE+CA/CE 5HP~7.5HP: SIC/SIC+CA/CE
Shaft	SUS 410
Motor Housing	SUS 304
Bearing	NTN

Submersible Jet Aerator

JA

Feature

- High oxygen transfer rate
- BOD easy to remove from wastewater treatment
- Mixing and stirring applications for uniform MLSS
- Provide coarse/gross bubbles

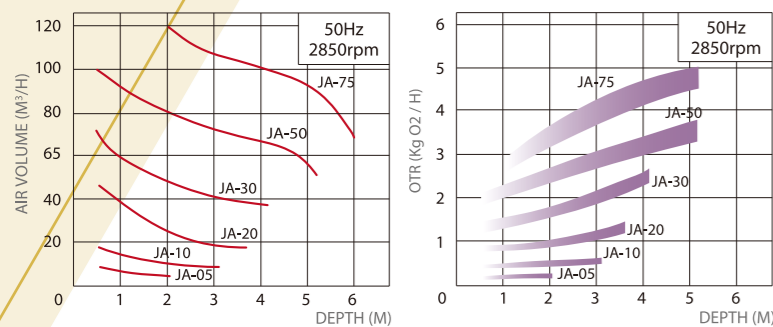
Application

- The wastewater treatment aeration and agitation

Materials

Mech. Seal	CA/CE+SIC/SIC
Impeller	FC 200
Shaft	SUS 410

Performance Curve



Type	Output		Discharge Inch	F.L.A.		Rated		Pole	Free Passage mm	Weight kg
	HP	KW		1ø 230V	3ø 400V	AIR m³/hr	OTR kg-O₂/H			
JA-05	0.5	0.37	3"	4	1.2	5	0.12~0.23	1.5	2	22.2(41.4)
JA-10	1	0.75	3"	6	2	10	0.3~0.5	2	2	27(46.2)
JA-20	2	1.5	3"	11.3	3.5	22	0.9~1.1	2.5	2	37.7(56.9)
JA-30	3	2.2	3"	-	5.2	40	1.9~2.2	3	2	38.8(58)
JA-50	5	3.7	3"	-	8.6	70	2.8~3.3	3.5	2	54(73.2)
JA-75	7.5	5.5	3"	-	12	100	4.2~4.8	4	2	60(79.2)

JDS

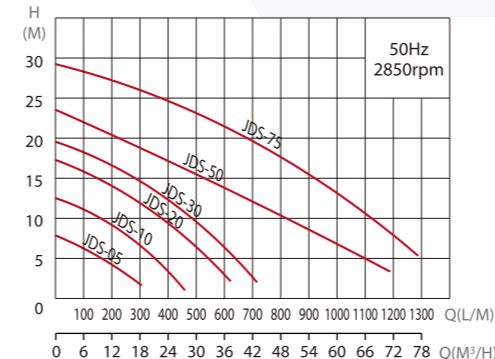
Feature

- Vortex Impeller/Non-clogging
- Minimized abrasive wear
- Large impeller clearance
- Maintenance free
- Double Mech. Seal

Application

- Medium concentration wastewater
- Heavy duty

Performance Curve



Type	Output		Discharge Inch	F.L.A.		Rated		Maximum		Pole	Free Passage mm	Weight kg
	HP	KW		1ø 230V	3ø 400V	Head m	Cap. LPM	Head m	Cap. LPM			
JDS-05	0.5	0.37	2"	4	1.2	6	150	8	320	2	35	13.2
JDS-10	1	0.75	2"	6	2	9	200	12.5	460	2	35	18
JDS-20	2	1.5	2"(3")	11.3	3.5	10	350	17.5	650	2	45	34.7
JDS-30	3	2.2	2"(3")	-	5.2	11	450	19.5	750	2	45	35.8
JDS-50	5	3.7	3"(4")	-	8.6	10	800	23.5	1200	2	45	56
JDS-75	7.5	5.5	3"(4")	-	12	12	1040	29.5	1400	2	45	62

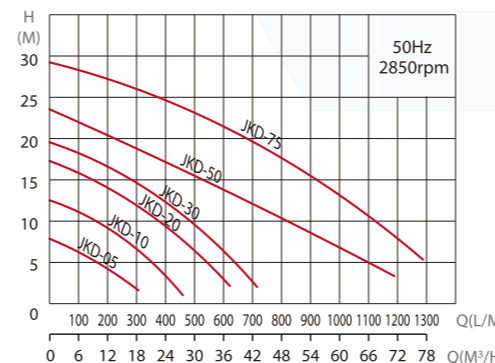


Vortex impeller

Materials

Mech. Seal	SIC/SIC+CA/CE
Impeller	FC 200
Shaft	SUS 410

Performance Curve



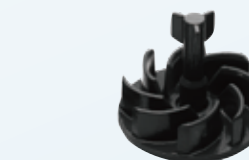
Type	Output		Discharge Inch	F.L.A.		Rated		Maximum		Pole	Free Passage mm	Weight kg
	HP	KW		1ø 230V	3ø 400V	Head m	Cap. LPM	Head m	Cap. LPM			
JKD-05	0.5	0.37	2"	4	1.2	6	150	8	320	2	10	13.2
JKD-10	1	0.75	2"	6	2	9	200	12.5	460	2	10	18
JKD-20	2	1.5	2"(3")	11.3	3.5	10	350	17.5	650	2	15	34.7
JKD-30	3	2.2	2"(3")	-	5.2	11	450	19.5	750	2	15	35.8
JKD-50	5	3.7	3"(4")	-	8.6	10	800	23.5	1200	2	12.5	56
JKD-75	7.5	5.5	3"(4")	-	12	12	1040	29.5	1400	2	12.5	62

Feature

- Vortex impeller with agitator
- Non-Colg operation
- Double mechanical seals in Si. Ca
- Reliable shaft sealing
- Automatic operation (Optional)

Application

- Dredging
- High concentration slurry



Impeller with powerful agitator

Materials

Mech. Seal	SIC/SIC+CA/CE
Impeller	FC 200
Agitator	SUS 316
Shaft	SUS 410

JSB

Materials

Mech. Seal	SIC/SIC+CA/CE
Impeller	SUS 316
Shaft	SUS 316



Vortex Impeller
316 Stainless Steel



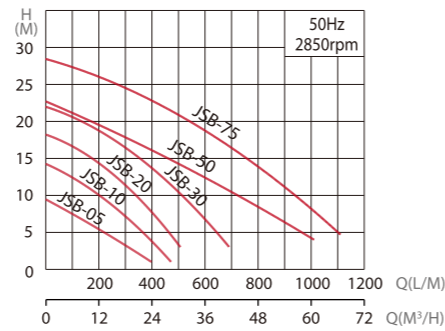
Feature

- Vortex Impeller / Non-clogging
- Minimized abrasive wear
- Large impeller clearance
- Maintenance free
- Double Mech. Seal in Si. Ca
- Loss wax 316 Stainless Steel

Application

- Medium concentration wastewater
- Heavy duty

Performance Curve



Type	Output		Discharge Inch	F.L.A.		Rated		Maximum		Pole	Free Passage mm	Weight kg
	HP	KW		1ø 230V	3ø 400V	Head m	Cap. LPM	Head m	Cap. LPM			
JSB-05	0.5	0.37	2"	3.4	1.4	5.4	200	9.5	398	2	35	13.2
JSB-10	1	0.75	2"	6	2.2	9	240	14.3	472	2	35	18
JSB-20	2	1.5	2"(3")	9.8	4.2	12	280	18.3	507	2	45	34.7
JSB-30	3	2.2	2"(3")	-	5.7	14.7	360	22.1	690	2	45	35.8
JSB-50	5	3.7	3"(4")	-	7.5	13.2	560	23.3	1010	2	45	56
JSB-75	7.5	5.5	3"(4")	-	11.4	18.7	600	28.8	1110	2	45	62

JDSK

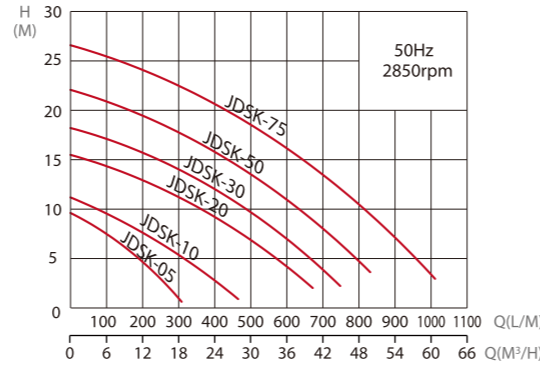
Feature

- Tungsten inserts incorporated on the impeller blades to provide shredding action
- Reliable shaft sealing provided by double mechanical seal in Si.Ca
- Automatic operation (Optional)

Application

- Drainage of sewage from building and school basement etc.
- Septic tank and cesspit
- Wastewater treatment
- Ground water drainage

Performance Curve



Type	Output		Discharge Inch	F.L.A.		Rated		Maximum		Pole	Free Passage mm	Weight kg
	HP	KW		1ø 230V	3ø 400V	Head m	Cap. LPM	Head m	Cap. LPM			
JDSK-05	0.5	0.37	2"	4	1.2	6	150	9.5	300	2	19	13.3
JDSK-10	1	0.75	2"	6	1.8	8	190	11	430	2	19	19
JDSK-20	2	1.5	2"(3")	11.3	3.5	10	360	15.5	700	2	23	36.5
JDSK-30	3	2.2	2"(3")	-	5.2	11	440	18.5	800	2	23	37.6
JDSK-50	5	3.7	3"(4")	-	8.6	8	690	22.5	950	2	28	58
JDSK-75	7.5	5.5	3"(4")	-	12	12	750	26.5	1100	2	28	62



Cutter Impeller
(Tungsten Edge)

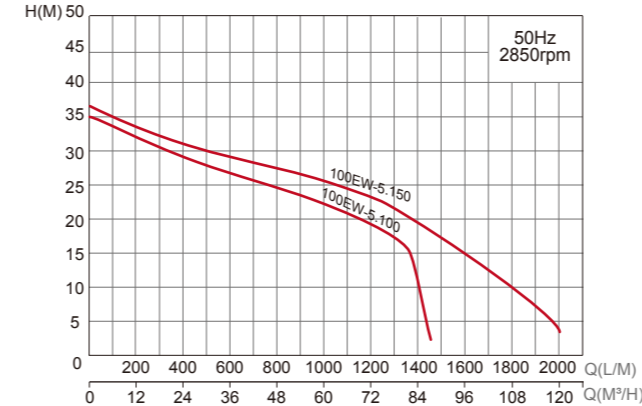
Materials

Mech. Seal	SIC/SIC+CA/CE
Impeller	FCD45+Tungsten edge
Shaft	SUS 410



JDS-100/150

Performance Curve



Type	Output		Discharge Inch	F.L.A.		Rated		Maximum		Pole	Free Passage mm	Weight kg	Q.D.C.	Dimensions(mm)		
	HP	KW		1ø 230V	3ø 400V	Head m	Cap. LPM	Head m	Cap. LPM					N	N1	N2
JDS-100	10	7.5	4"	-	15.8	20	1160	35	1450	2	50	74	QL-100	725	552	180
JDS-150	15	11	4"	-	21.5	22	1270	36	2000	2	50	84	QL-100	755	582	180

Feature

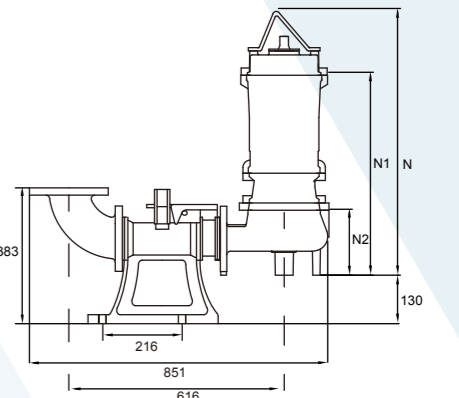
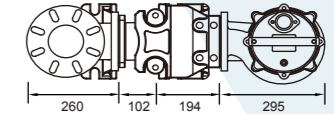
- Vortex Impeller/Non-clogging
- Minimized abrasive wear
- Large impeller clearance
- Maintenance free
- Double Mech. Seal

Application

- Medium concentration wastewater
- Heavy duty



Vortex impeller



JDS-100~150 with QL-100 QDC

JSG

Feature

- Radial cutter and cutter ring SUS440C : corrosion resistant material, hardened to 55-60 Rockwell C.
- Specific single phase design for starting torque, torque is five times stronger than General capacitor pump.
- Horizontal casing with female thread can be fit the pipe directly

Application

- Waste water treatment
- Drainage of wastewater from individual residences, apartment buildings, recreational developments, motels.
- Transferring wastewater, Schools, federal, state and local parks

Materials

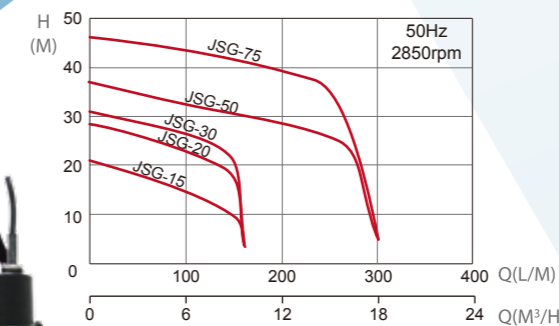
Mech. Seal	CA/CE /NBR + SIC/SIC/NBR
Impeller	FC 200
Shaft	SUS 410



Semi-open Impeller



Performance Curve



Type	Output		Discharge Inch	F.L.A.		Rated		Maximum		Pole	Free Passage mm	Weight kg	Dimensions(mm)			
	HP	KW		1ø 230V	3ø 400V	Head m	Cap. LPM	Head m	Cap. LPM				H	H1	K	K1
JSG-15	1.5	1.1	1-1/4"	8.8	3.3	15.5	90	21	160	2	10	30	640	445	630	432
JSG-20	2	1.5	1-1/4"	11.2	4.5	23	100	28.5	160	2	10	32.8	640	445	630	432
JSG-30	3	2.2	1-1/4"	-	4.7	25	120	31	160	2	10	35	680	485	670	472
JSG-50	5	3.7	2"	-	8.7	26	250	37	300	2	10	44	669	509	637	477
JSG-75	7.5	5.5	2"	-	11.8	36	250	46	300	2	10	49	709	549	677	517

