



Power BI

vs

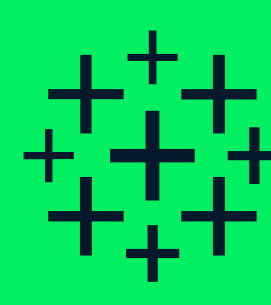
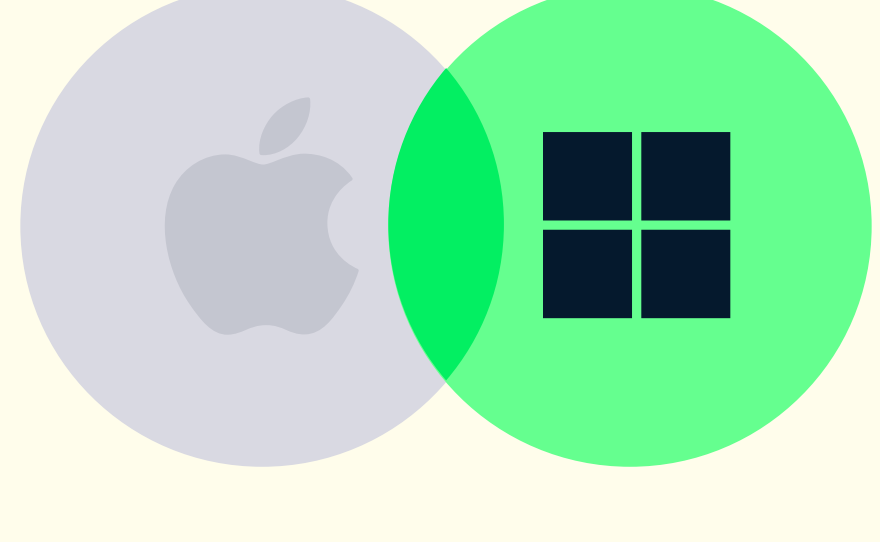


tableau  
SOFTWARE

PLATFORM



Power BI only works on **Microsoft Windows**

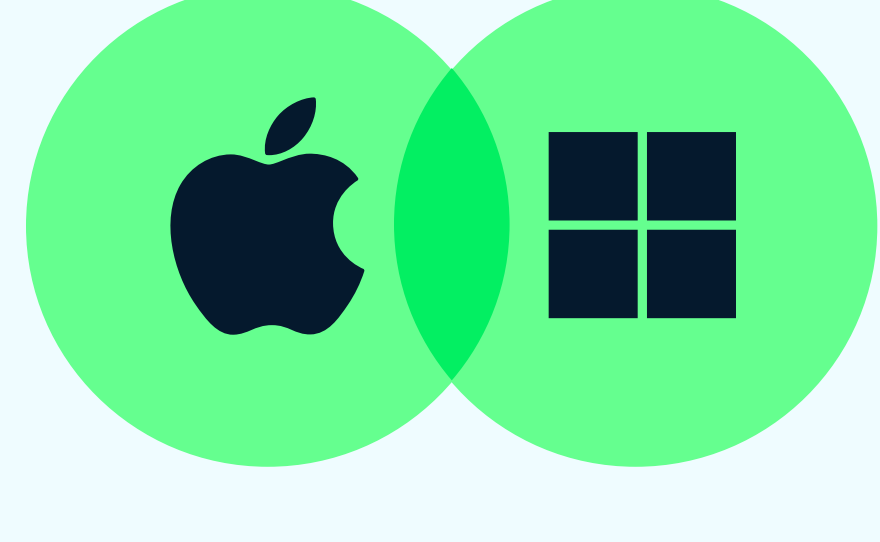


Tableau works on both **MacOS and Microsoft Windows**, among other systems.

CERTIFICATION

**\$165**

Power BI has one exam called **PL-300** that covers all the main functionalities of the platform and costs \$165

**\$250**

Tableau offers a wider range of options designed for specific professions. The counterpart to the Power BI PL-300 exam is the **"Tableau Certified Data Analyst"** exam which costs \$250.

AFFORDABILITY

**\$20** /M

Power BI professional version costs **\$9.99 per month per user**. Power BI Premium (for larger teams and businesses) is priced at **\$4,995/month per capacity or \$20/month per user**.

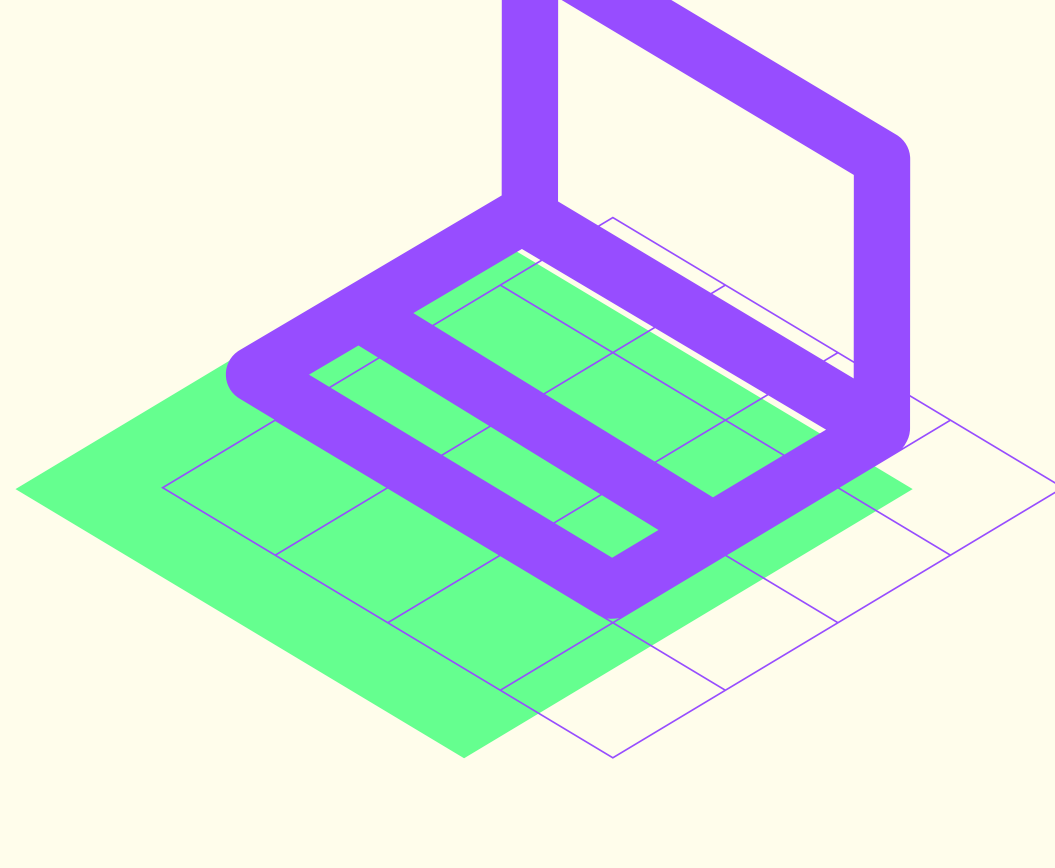
**\$70** /M

Tableau Creator costs around **\$70/month**, while Tableau Viewer, which enables users to view created dashboards, is priced at **\$15/month**.

PERFORMANCE

Power BI and Tableau are built to handle large amounts of data. Both tools have various storage and connection types. Some are built to handle large amounts of data where others are built to ensure real-time dashboard updates.

USER EXPERIENCE



The user interface of Power BI is intuitive, and it can easily be integrated with other Microsoft products.

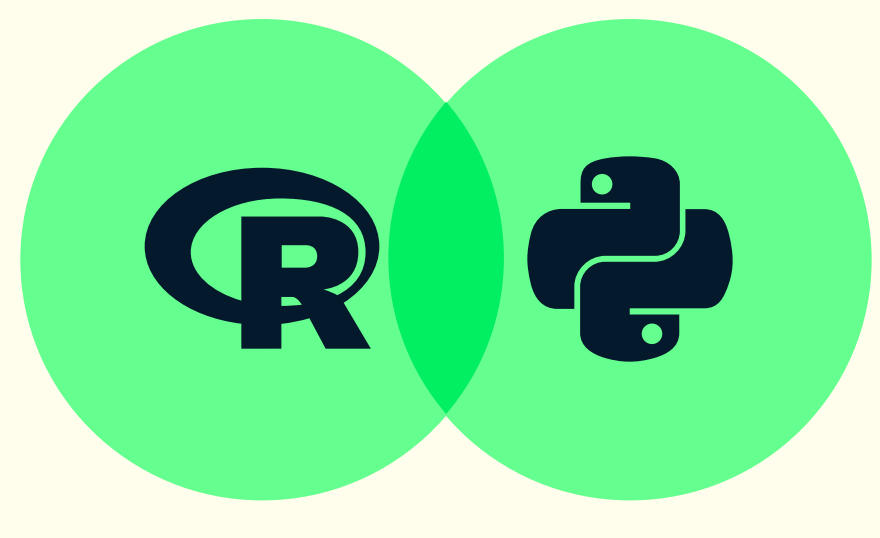


Tableau has a fanbase who praise it for its easy to use interface that doesn't overwhelm you with tons of buttons and menus.

DATA SOURCES

Both tools can connect to 100+ data sources. Power BI has a slightly better integration with the Microsoft stack, but otherwise the two platforms are evenly matched.

PROGRAMMING LANGAUGES



Power BI can connect to both R and Python. Power BI users can also use the integrated formula language "Data Analysis Expressions" (DAX) in their analysis.

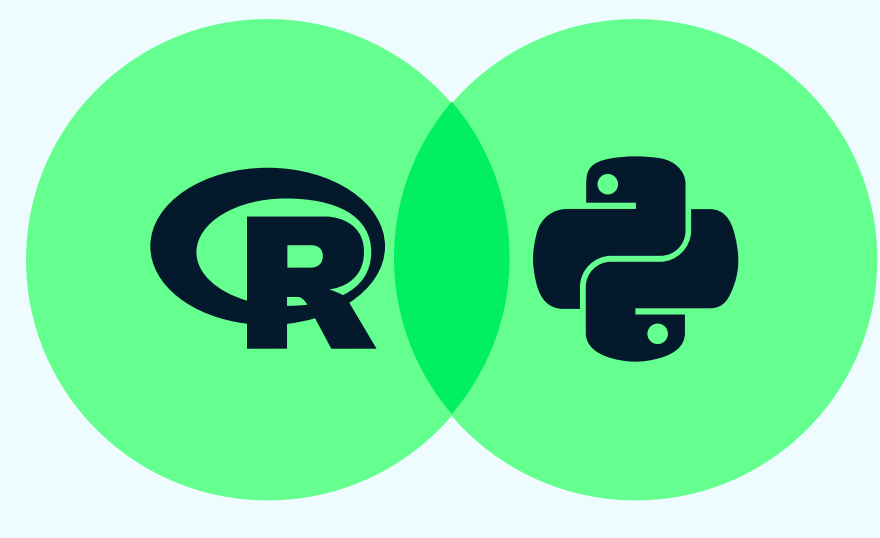
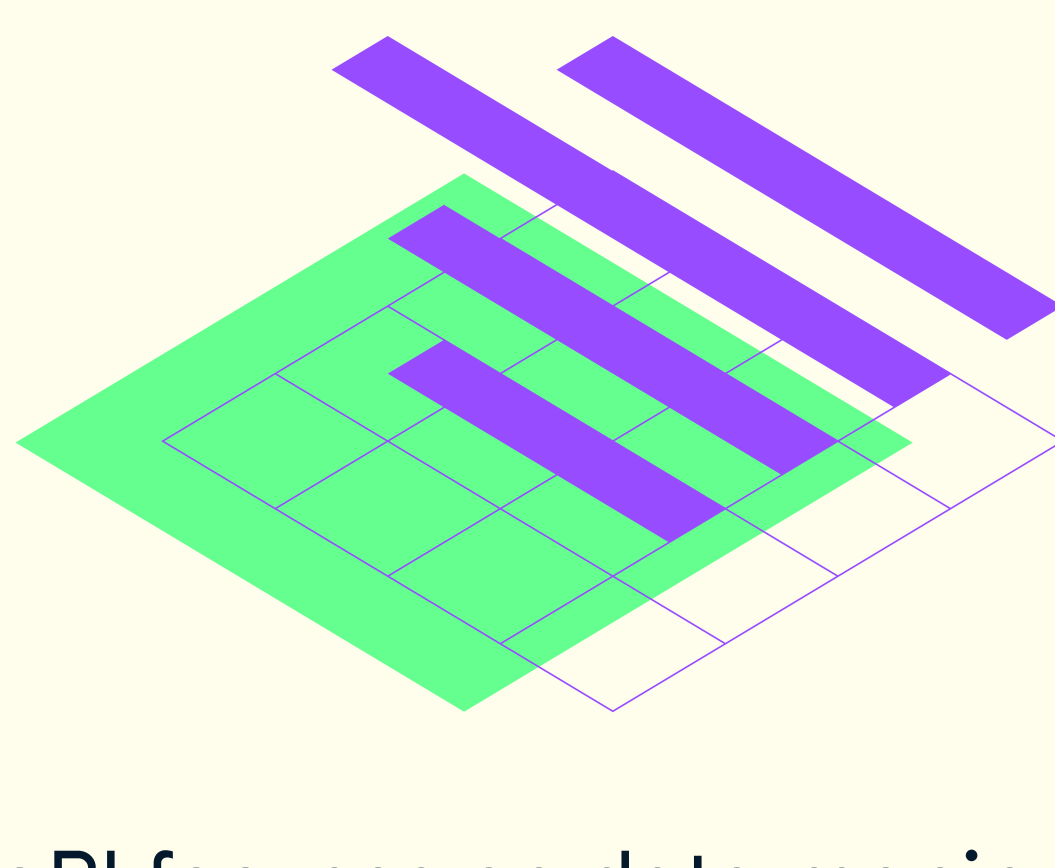


Tableau integrates seamlessly with Python and R to make use of their powerful features.

DATA VISUALISATION



Power BI focuses on data manipulation first and provides simple visualization later, letting you select various visualizations as blueprints. It also gives users access to drill down features.



Tableau scales well to larger sets and gives users great drill down features. It delivers interactive visuals that support insights on the fly.

MACHINE LEARNING

Power BI premium enjoys the advantages of Microsoft business analytics for machine learning as well as the features of Python and R machine learning.

Tableau supports the features of Python and R machine learning and has also recently introduced "Einstein Discovery" to implement native ML features.

DEPLOYMENT

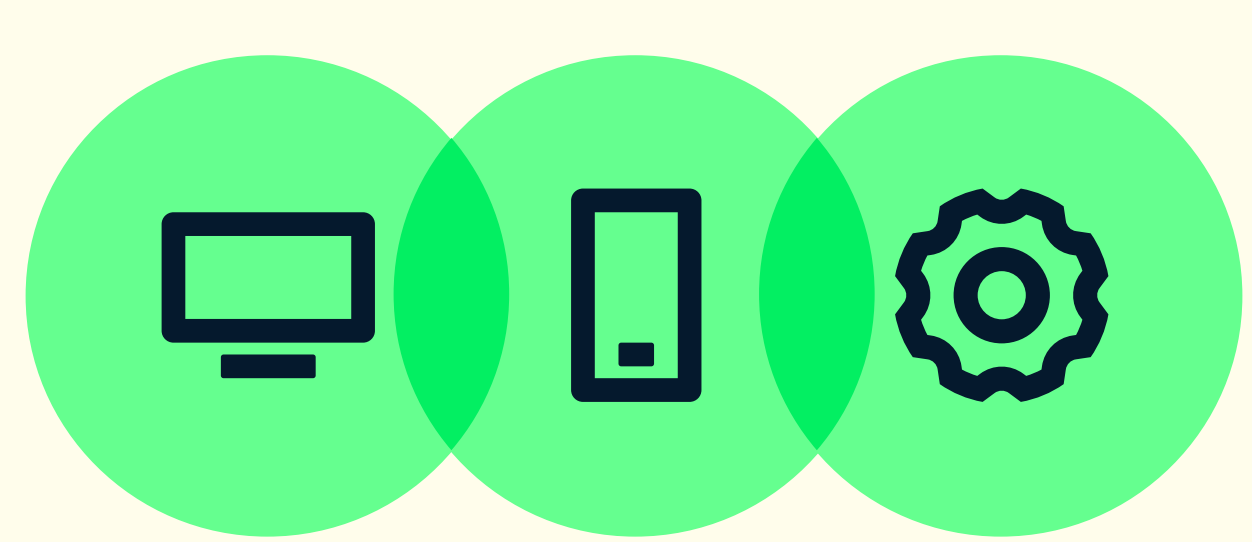
Tableau can be run on a firm's existing infrastructure be it Linux, Windows, Public Cloud or on-premises whereas with Power BI you are required to migrate to Azure. If you want to deploy Power BI on-premises, you need Data Gateways which function as a link between Power BI service and on-premises data sources.

FREE VERSION

Power BI Desktop can be used with limited features for free and allows you to connect to multiple data sources to transform and visualize your data.

Tableau Public is a free version of Tableau that allows users to explore and visualize data and then share it publicly with Tableau Public community online.

SETUP



Power BI is available in three forms: Power BI Desktop, Power BI mobile and Power BI service.

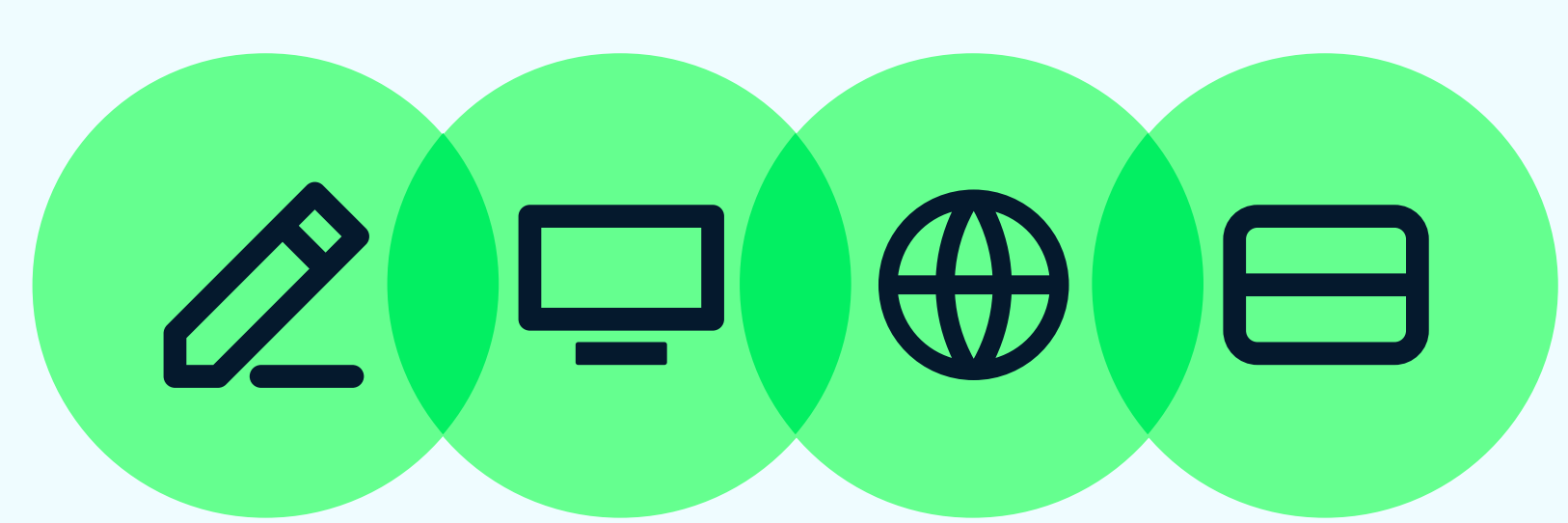


Tableau has four products: Tableau Prep, Tableau Desktop, Tableau Online and Tableau Server.

Learn More

To learn more about both Power BI and Tableau, start learning with DataCamp. Pass key certifications and get up to date with the latest features and tools from Power BI and Tableau.

Learn Power BI

Learn Tableau