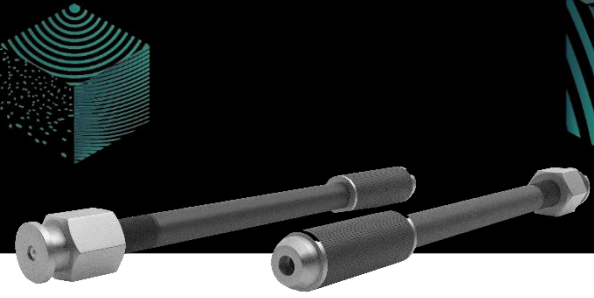


INJECT PACKER

FLAT-HEADED INJECTOR CONNECTOR



PRODUCT DESCRIPTION

Rubber and steel injector to be inserted at the sites of lesions, cracks, voids, joints, cavities, etc., to be waterproofed using the specified hydro-expansive polyurethane resins DRYKOS DRYINJECT, specifically designed for the immediate cessation of water infiltrations. Equipped with a "flat head" with a non-return valve, it is to be used in combination with the flat-headed injector connector.

AREA OF APPLICATION

- Immediate stoppage of water infiltrations under pressure in buildings
- Waterproofing of underground areas with hydro-expansive products
- Waterproofing of movement joints or construction joints
- Structural maintenance interventions on dams, reservoirs, pipes, and water channels
- Structural maintenance interventions on bridges and viaducts
- Structural maintenance interventions on tunnels and galleries

CONSUMPTION

4 units/m.

APPLICATION METHOD

Insert DRYKOS INJECT PACKER into the prepared holes. Tighten the end of the injector with a suitable wrench. The screwing of the injector will compress the rubber on its tip, causing it to swell and create the necessary mechanical and hydraulic seal. At this point, the injector is ready for use.

HEALTH AND SAFETY

Please be reminded that the user is required to review the latest Safety Data Sheet of the product, containing chemical-physical and toxicological data, risk stages, and other information for the safe transportation, usage, and disposal of the product and its packaging. Also, remember not to scatter the product and its packaging in the environment. Ensure the secure sealing of the injectors placed in the supports. Given the high injection pressures reached by the pumps, in the case of injectors not securely and correctly positioned, there is a real risk that they may exit rapidly from their seat (posing a risk of injury to operators!). Carefully study the placement of injectors near the masonry discontinuities to be injected. Poor positioning, too close to the crack to be filled, under the pump pressure, can cause the rupture of the support itself.

PACKAGING

Loose, per piece.

TECHNICAL SPECIFICATIONS

Colour	Steel
Dimensions	12 x 130 mm / 16 x 170 mm
Shelf life	unlimited