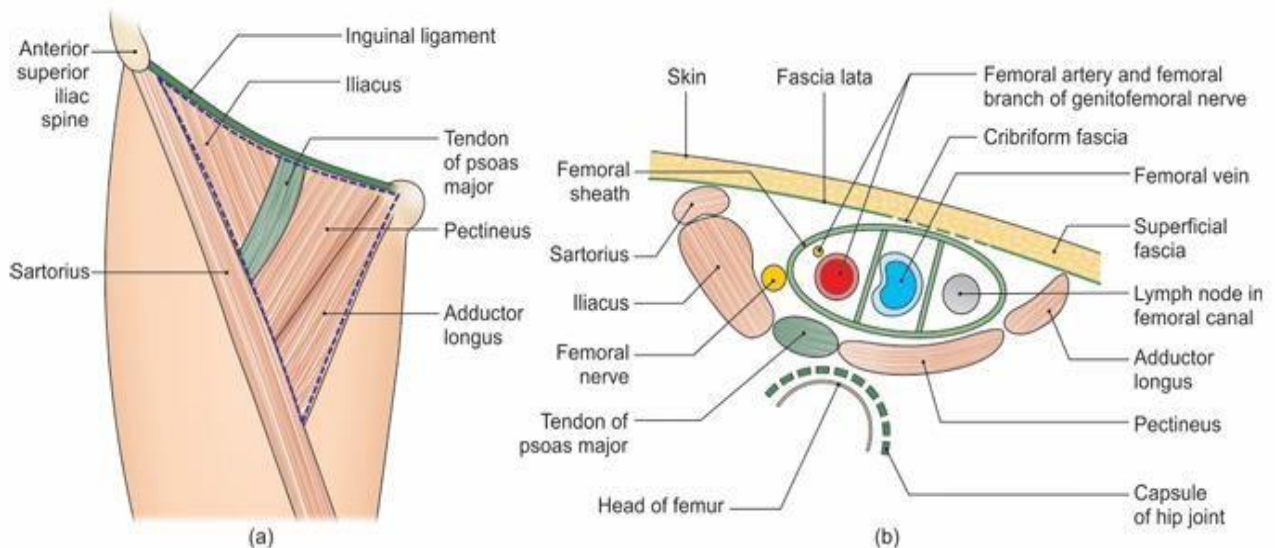


Inferior Extremity

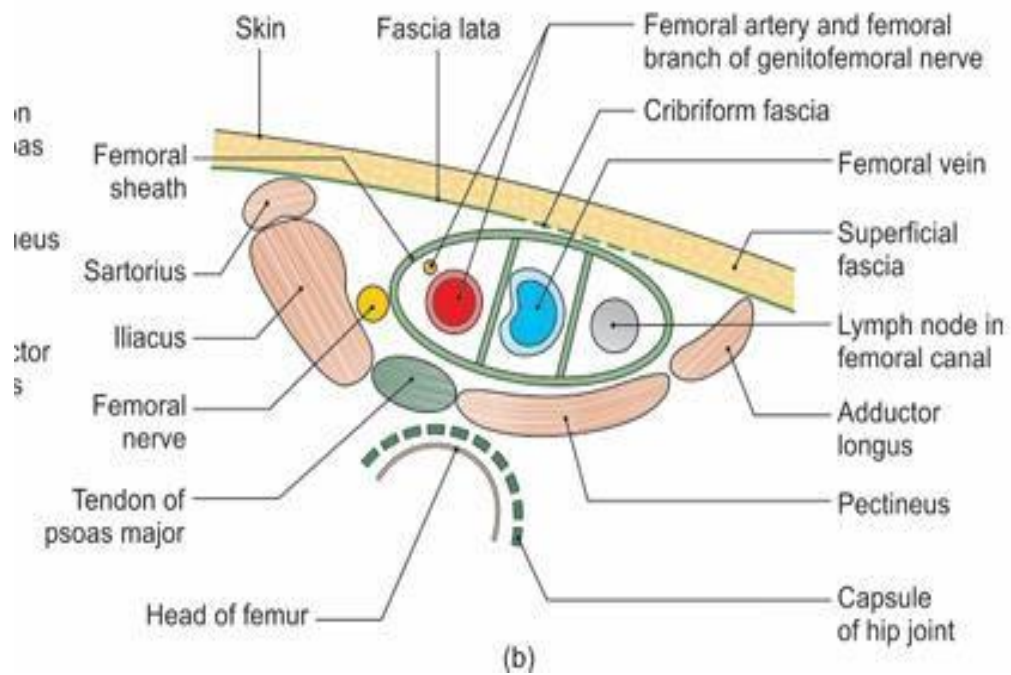
1. Boundaries and contents of femoral triangle



Figs 3.10a and b: Boundaries and floor of the femoral triangle: (a) Surface view, and (b) sectional view

Ref.: BD Chaurasiya, 8th edition, Fig. No. 3.10, Pg. No. 51

2. Transverse section at apex of femoral triangle



Ref.: BD Chaurasiya, 8th edition, Fig. No. 3.10(b), Pg. No. 51

3. Boundaries and content of adductor canal

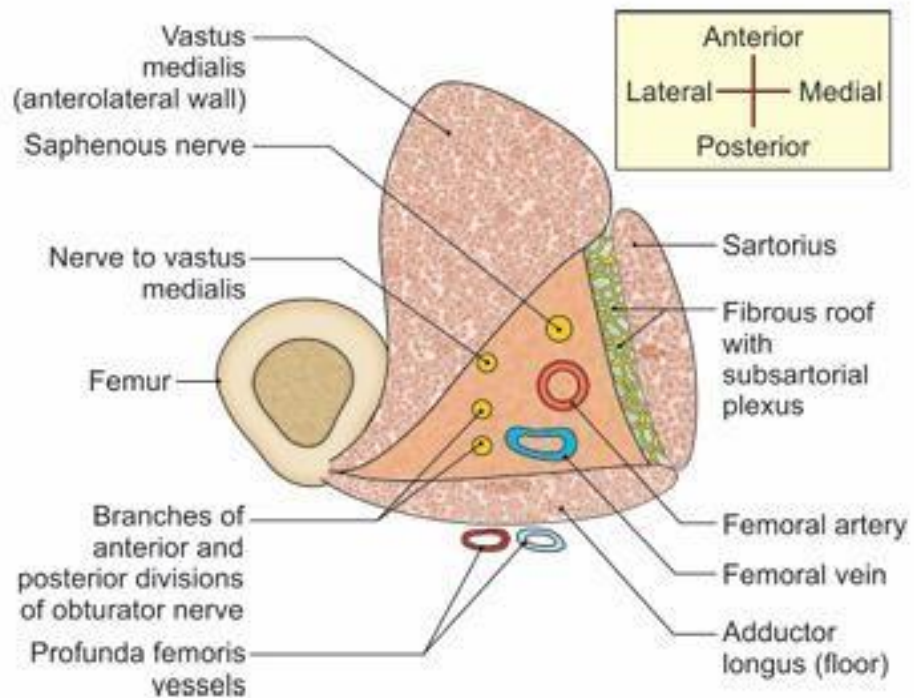


Fig. 3.34: Transverse section through the middle of the right adductor canal, seen from above. Note the boundaries and contents of the canal

Ref.: BD Chaurasiya, 8th edition, Fig. No. 3.34, Pg. No. 63

4. Structures passing through greater and lesser sciatic foramen

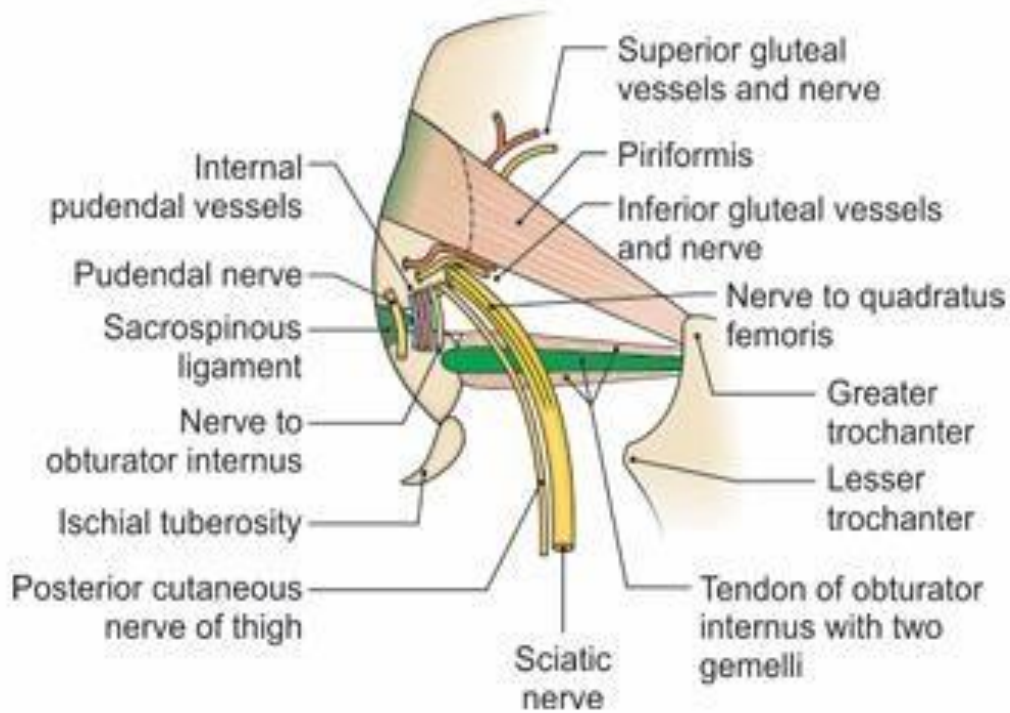


Fig. 5.15: Structures passing through greater and lesser sciatic notches

Ref.: BD Chaurasiya, 8th edition, Fig. No. 5.15, Pg. No. 84

5. Boundaries and contents of popliteal fossa

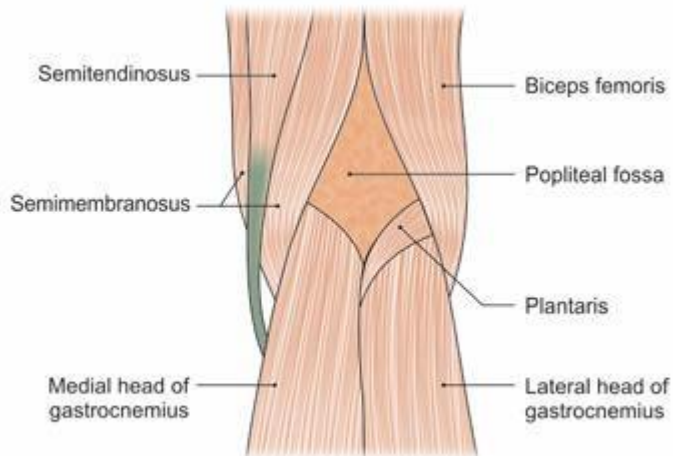


Fig. 6.1: Boundaries of the right popliteal fossa

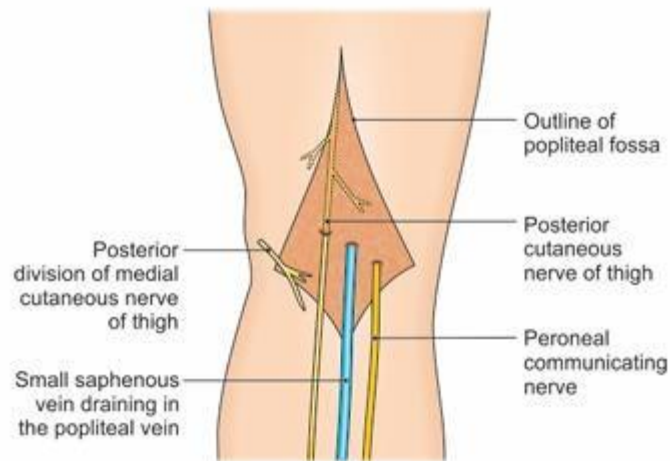


Fig. 6.2a: Structures in the roof of the popliteal fossa

Ref.: BD Chaurasiya, 8th edition, Fig. No. 6.1 & 6.2(a), Pg. No. 88

6. Structures attached to intercondylar area of tibia

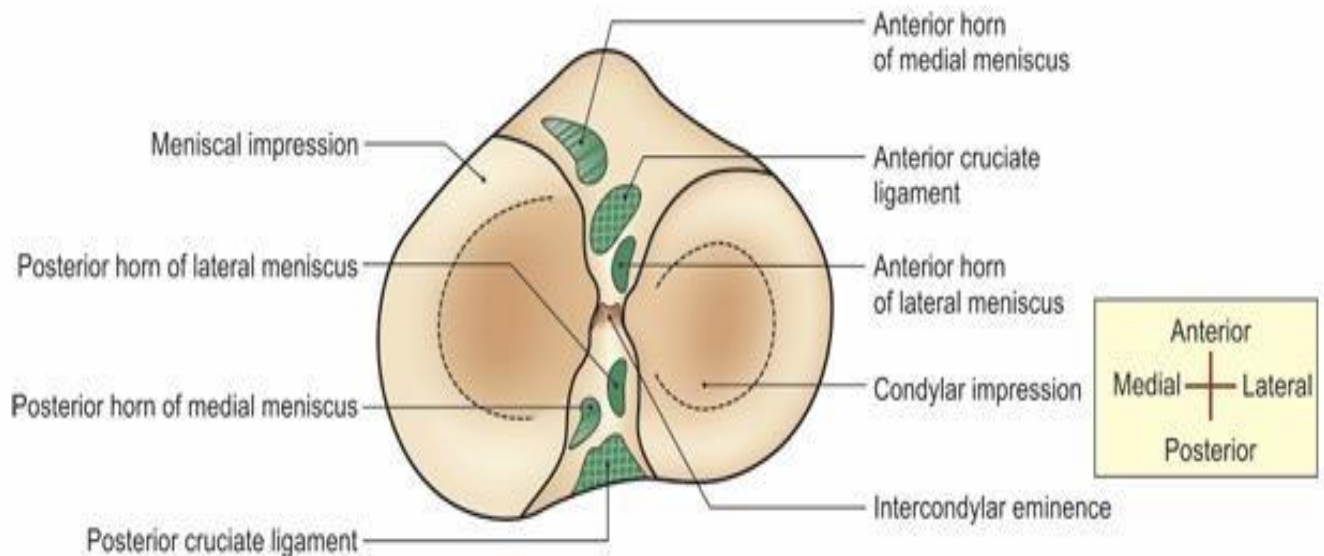


Fig. 2.28: Superior view of the upper end of the right tibia

Ref.: BD Chaurasiya, 8th edition, Fig. No. 2.28, Pg. No. 27

7. Transverse section at mid-leg

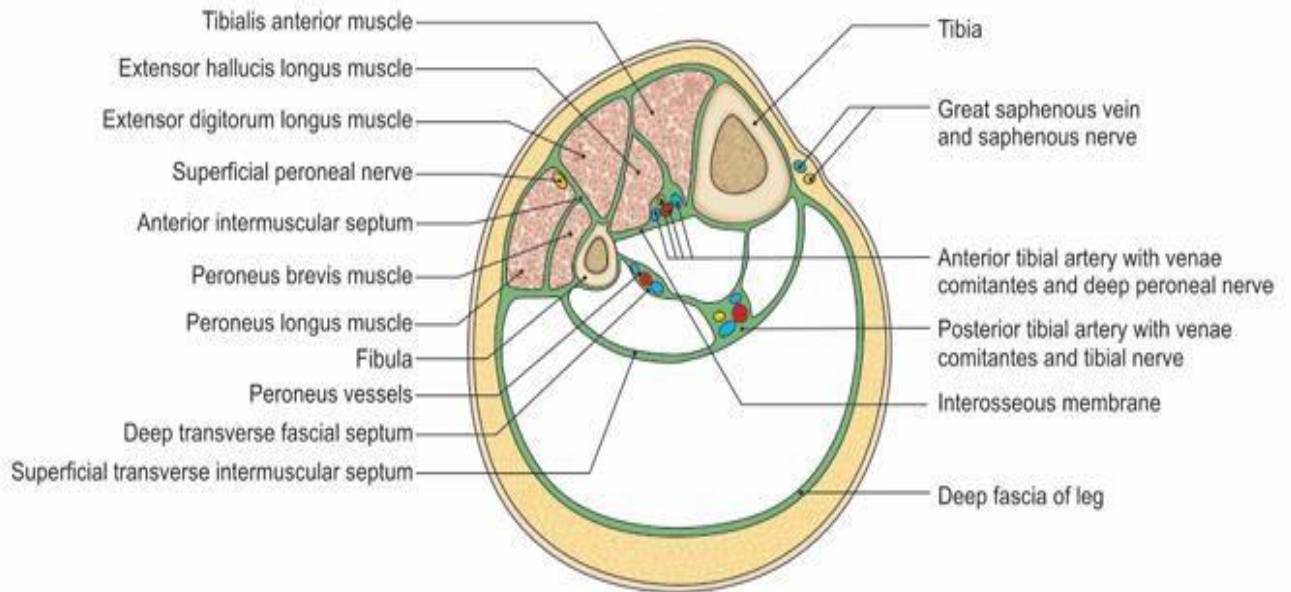


Fig. 8.5d: Transverse section through the middle of leg showing the arrangement of structures in the anterior and lateral compartments

Ref.: BD Chaurasiya, 8th edition, Fig. No. 8.5d, Pg. No. 111

8. Structures passing deep to extensor retinaculum of leg

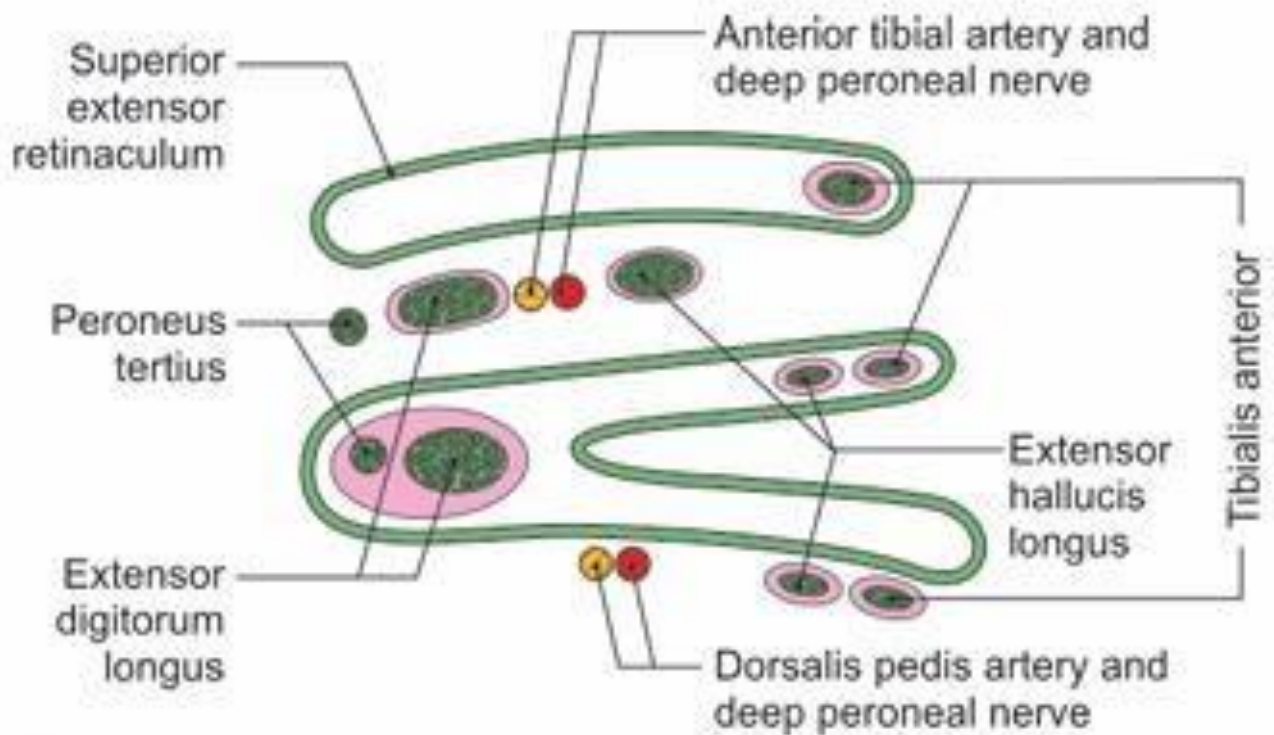


Fig. 8.3b: Relations of the superior and inferior extensor retinacula

Ref.: BD Chaurasiya, 8th edition, Fig. No. 8.3b, Pg. No. 109

9. Structures passing deep to flexor retinaculum of leg

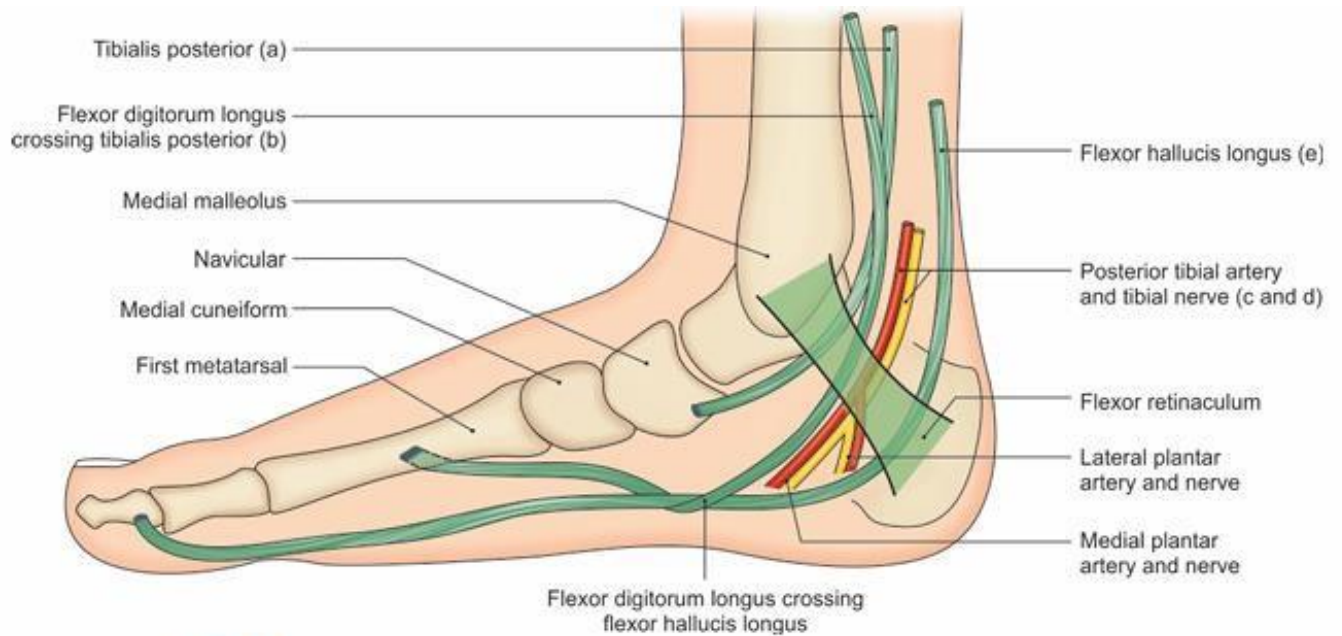
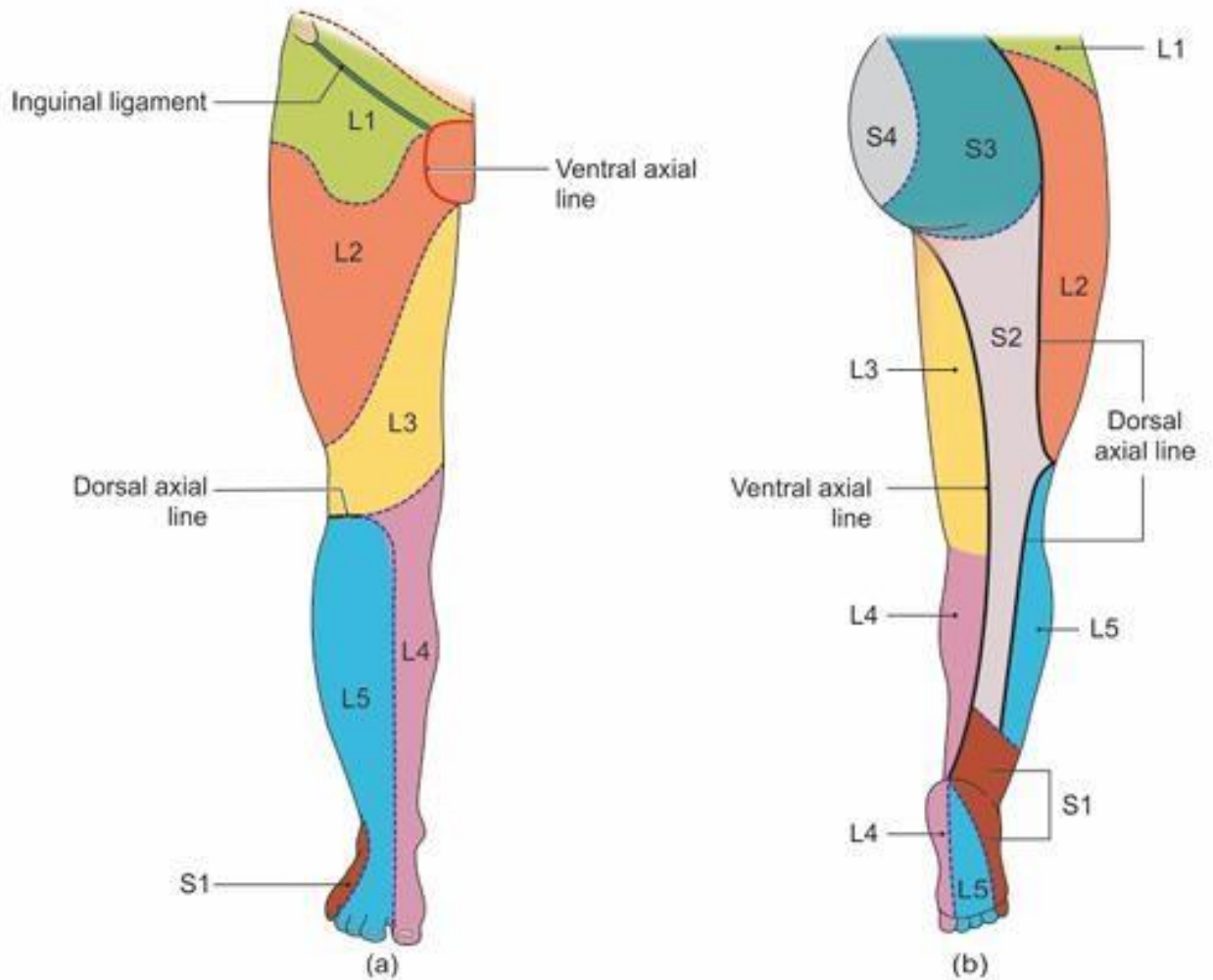


Fig. 9.2: Flexor retinaculum of the ankle, and the structures passing deep to it (a to e)

Ref.: BD Chaurasiya, 8th edition, Fig. No. 9.2, Pg. No. 125

10. Dermatomes of lower limb (front & back)



Figs 11.11a and b: Dermatomes of the lower limb: (a) Anterior view, and (b) posterior view

Ref.: BD Chaurasiya, 8th edition, Fig. No. 11.11, Pg. No. 155

11. Superficial veins of lower limb

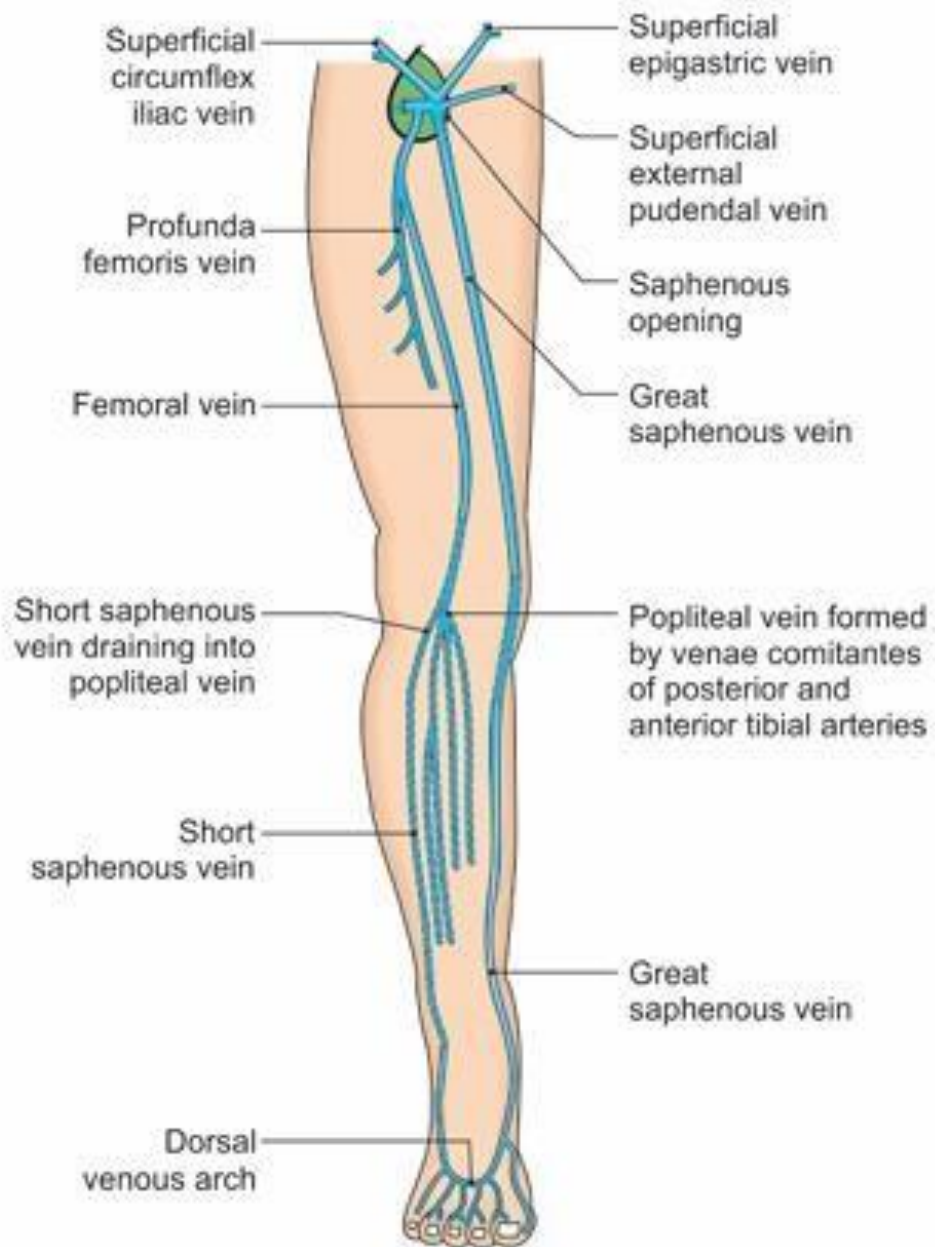


Fig. 11.1: Scheme to show the arrangement of the veins of lower limb. Popliteal, short saphenous and venae comitantes of posterior tibial artery are on posterior aspect

Ref.: BD Chaurasiya, 8th edition, Fig. No. 11.1, Pg. No. 149

12. Cutaneous nerves of dorsum and sole of foot

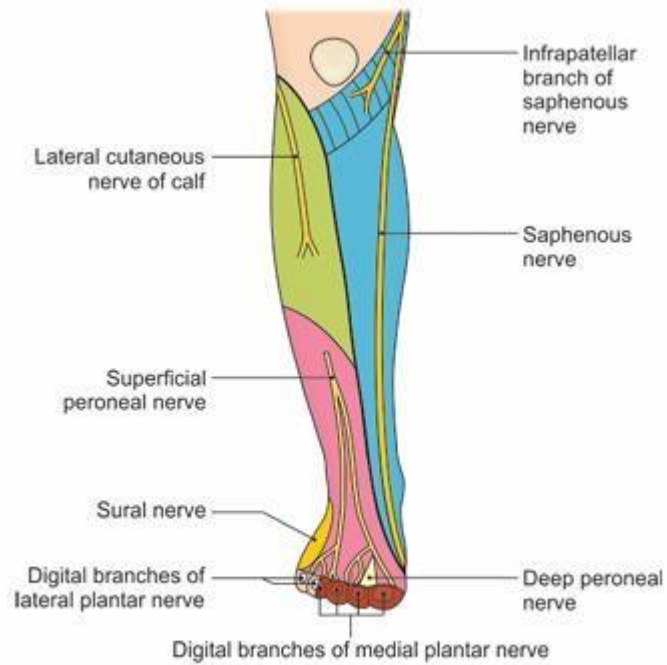


Fig. 8.1c: Cutaneous nerves on the front of the leg and dorsum of foot

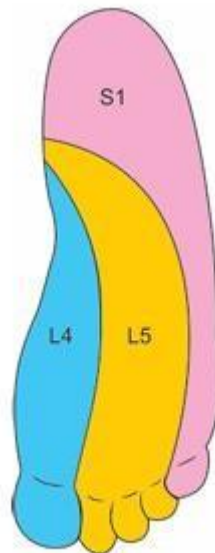
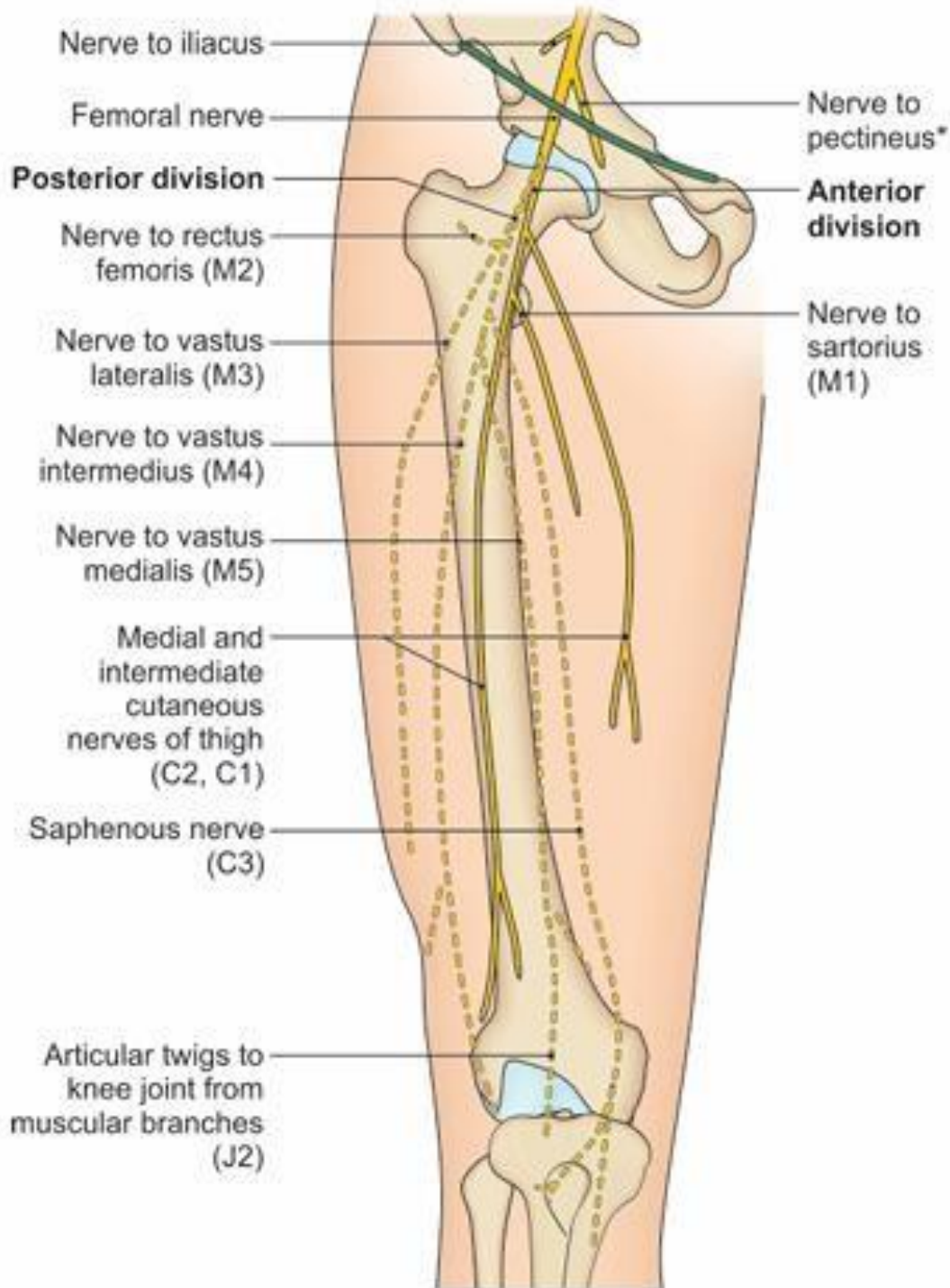


Fig. 10.2: Dermatomes on the sole

Ref.: BD Chaurasiya, 8th edition, Fig. No. 8.1c & 10.2, Pg. No. 107 & 135

13. Courses and branches of femoral nerve



Ref.: BD Chaurasiya, 8th edition, Fig. No. 3.26, Pg. No. 59

14. Courses and branches of obturator nerve

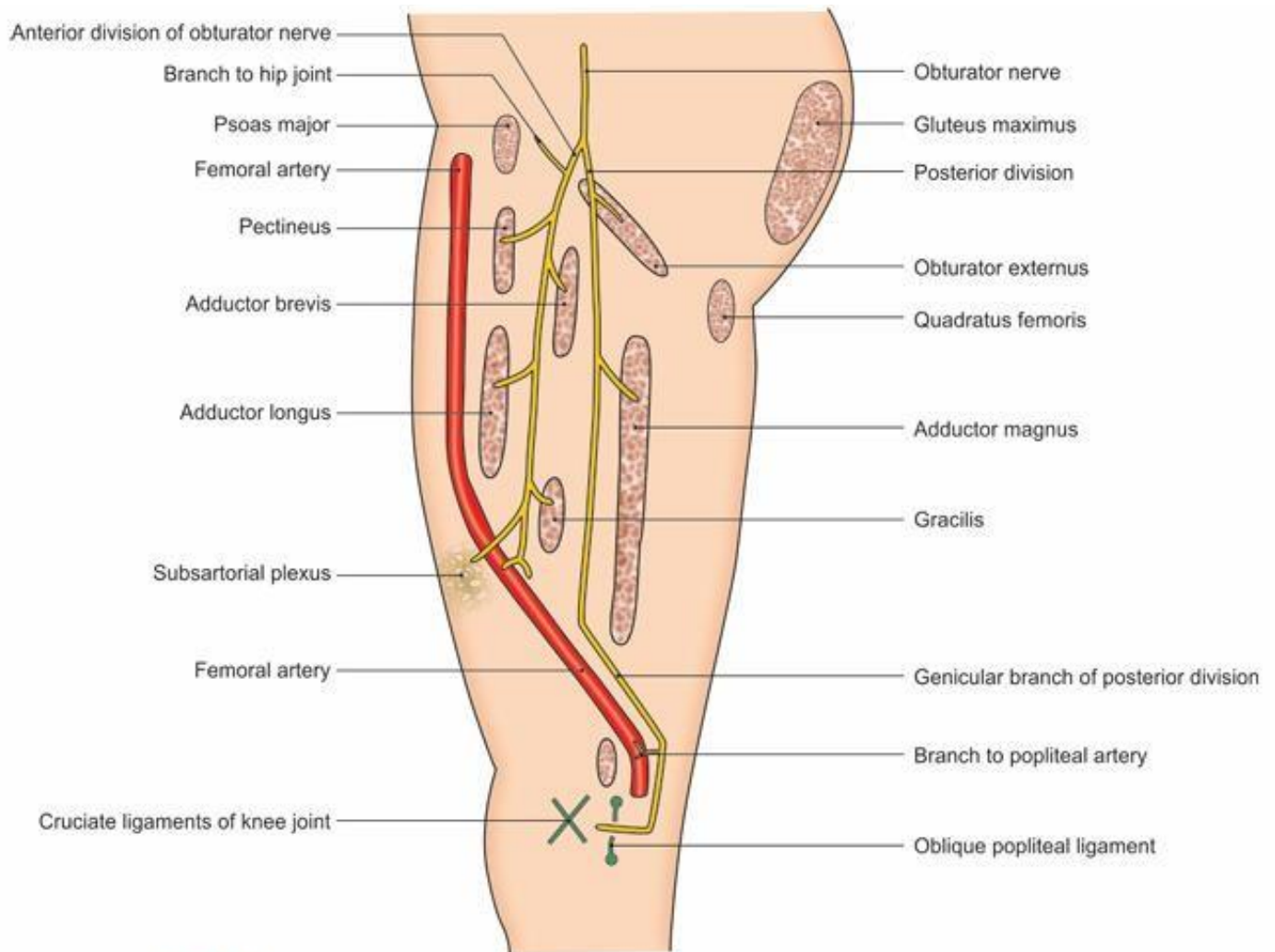


Fig. 4.4: The course and distribution of the obturator nerve and course of femoral artery

Ref.: BD Chaurasiya, 8th edition, Fig. No. 4.4, Pg. No. 69

15. Courses and branches of sciatic nerve and tibial nerve

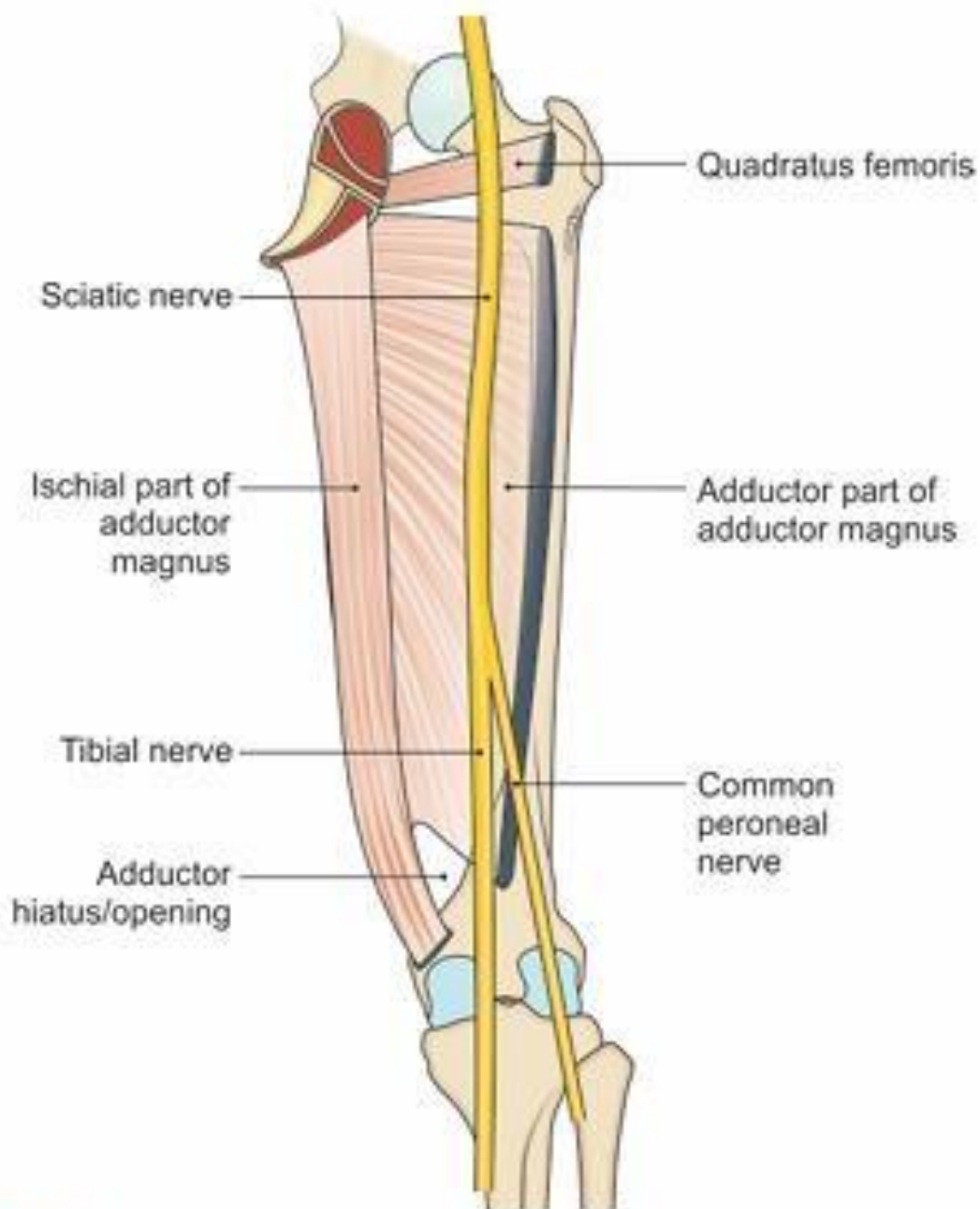
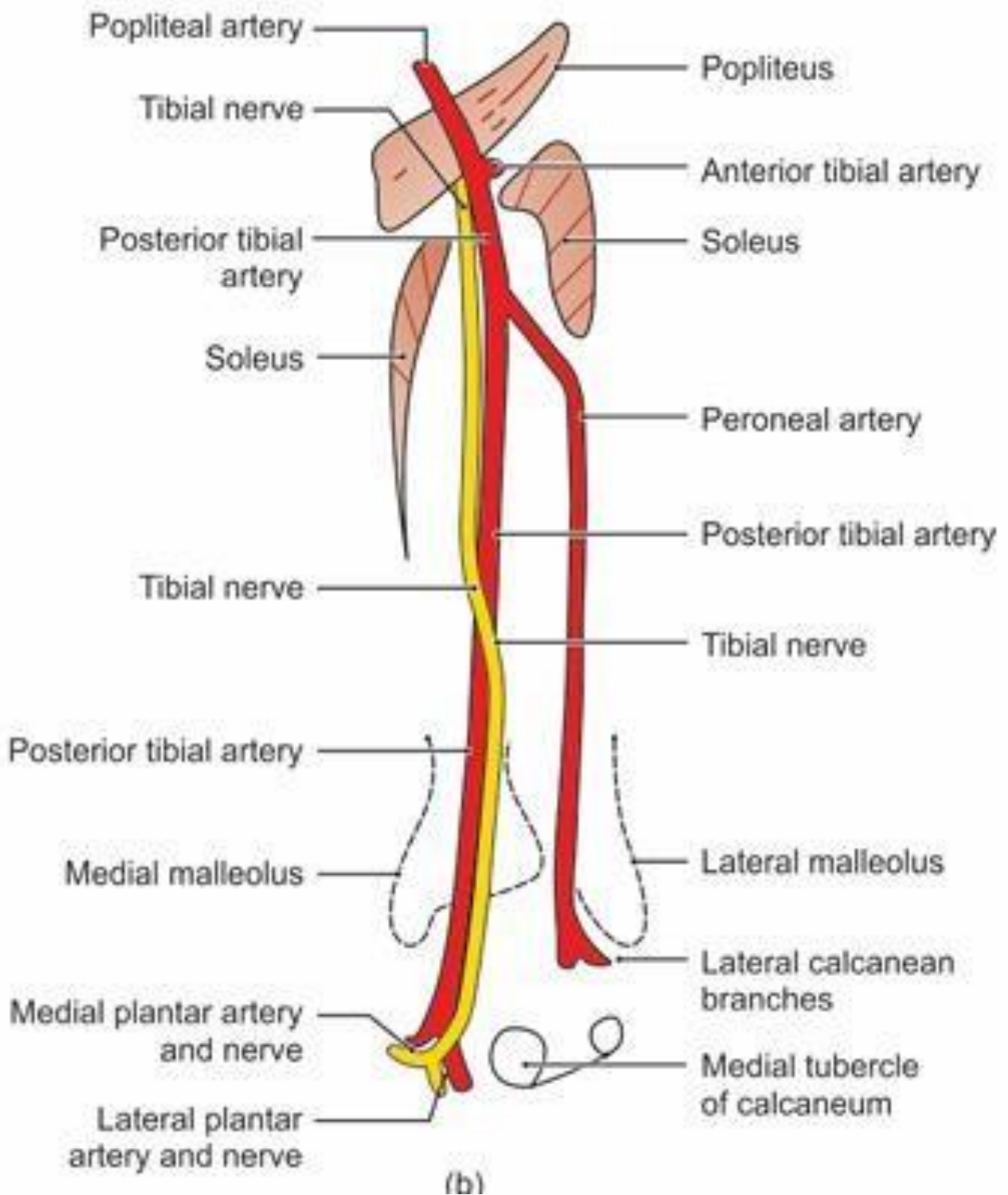


Fig. 7.3: Adductor magnus and quadratus femoris muscles with terminal branches of sciatic nerve



Ref.: BD Chaurasiya, 8th edition, Fig. No. 7.3 & 9.7(b), Pg. No. 98
 & 131

16. Courses and branches of common peroneal nerve

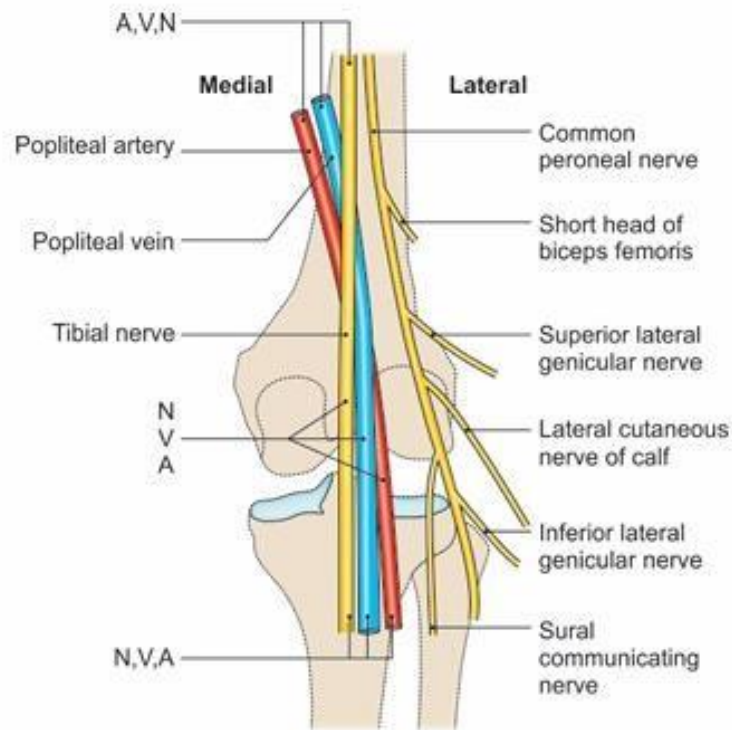
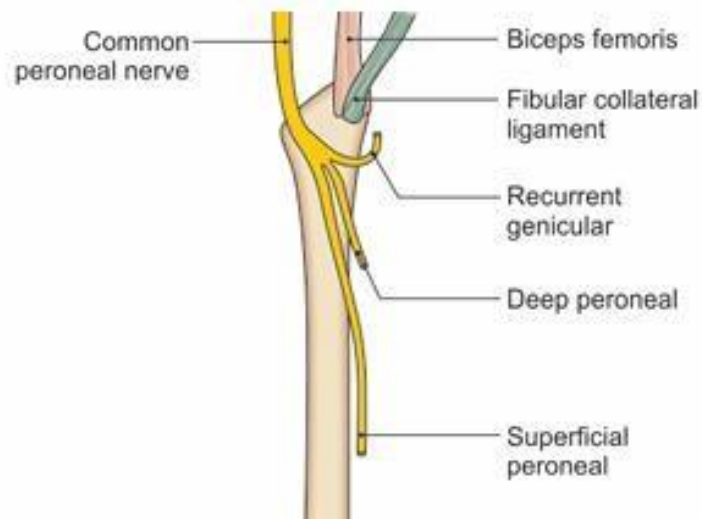


Fig. 6.4a: The arrangement of the main nerves and vessels in the popliteal fossa



Ref.: BD Chaurasiya, 8th edition, Fig. No. 6.4(a) & 8.9, Pg. No. 89 & 114

17. Arterial supply of lower limb

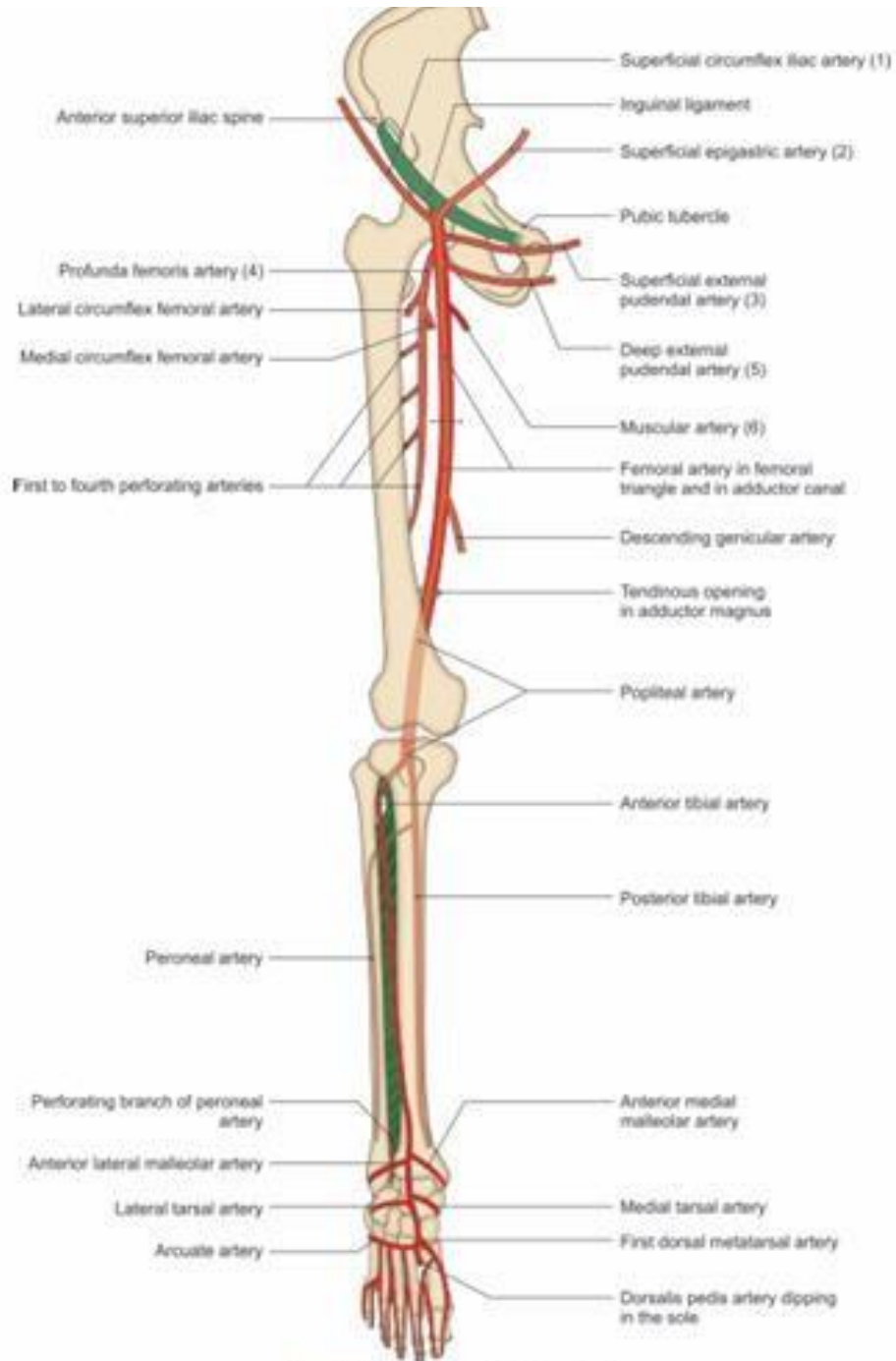


Fig. A1.7: Arterial supply of lower limb

Ref.: BD Chaurasiya, 8th edition, Fig. No. A1.7, Pg. No. 210

18. Bones forming lateral and medial arches of foot

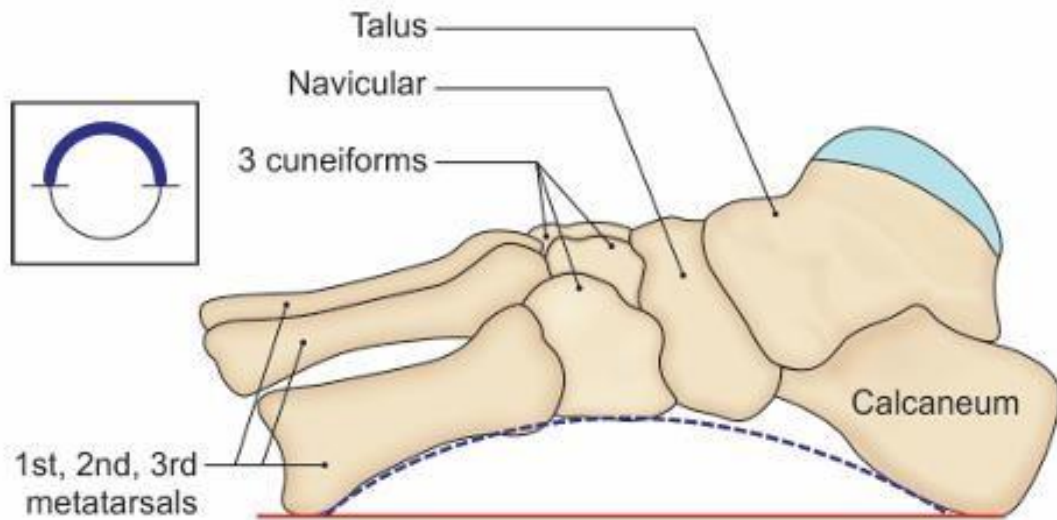


Fig. 13.3: Bones forming the medial longitudinal arch of foot: Medial view. Inset showing big arc of a small circle

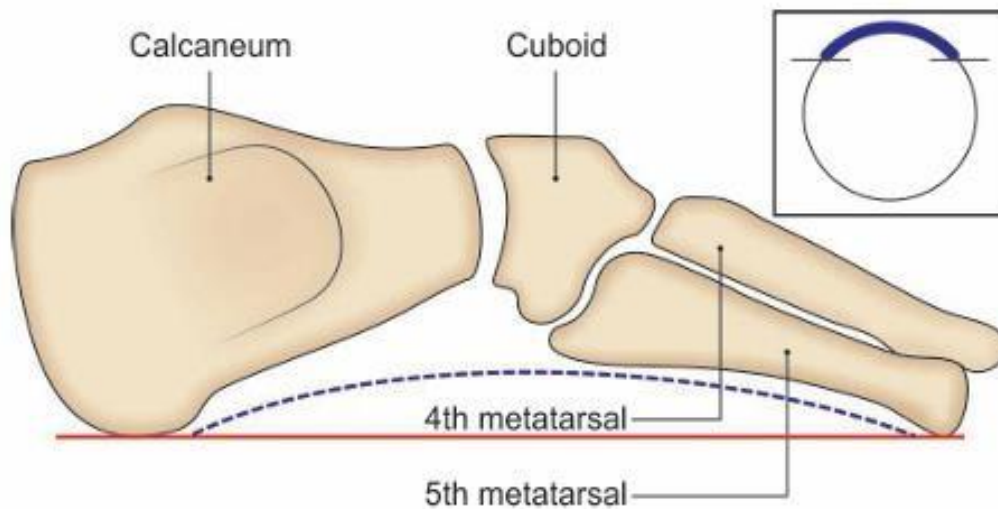


Fig. 13.4: Bones forming the lateral longitudinal arch of foot: Lateral view. Inset showing small arc of a big circle

Ref.: BD Chaurasiya, 8th edition, Fig. No. 13.3 & 13.4, Pg. No.