

1.

Superior Extremity

1. Lymphatics drainage of breast

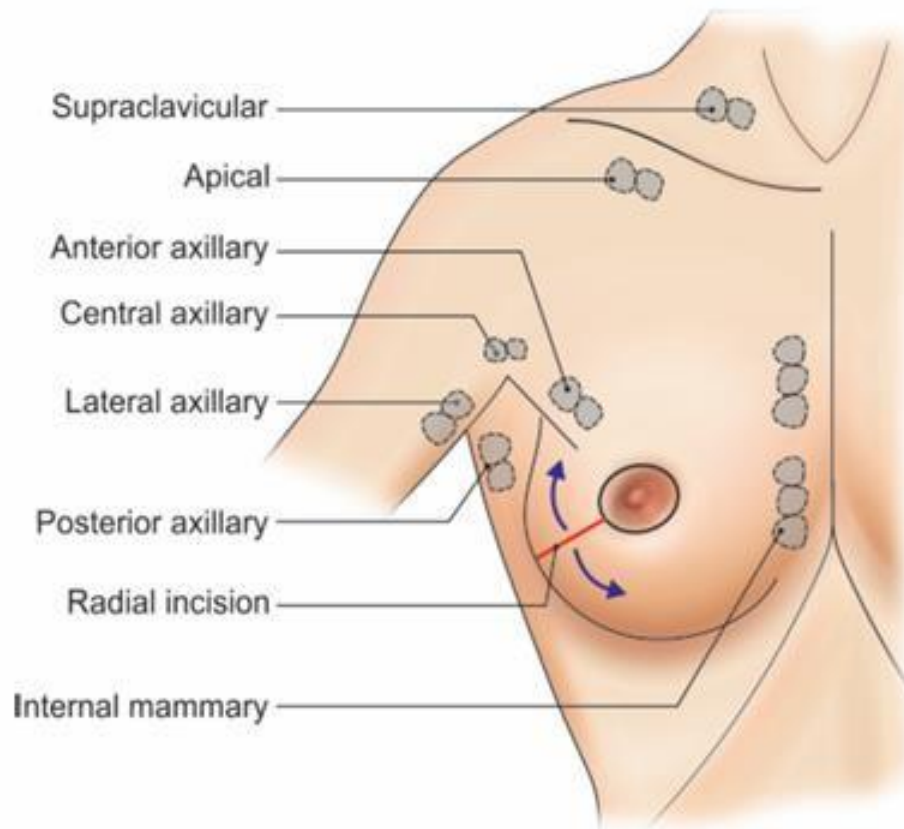
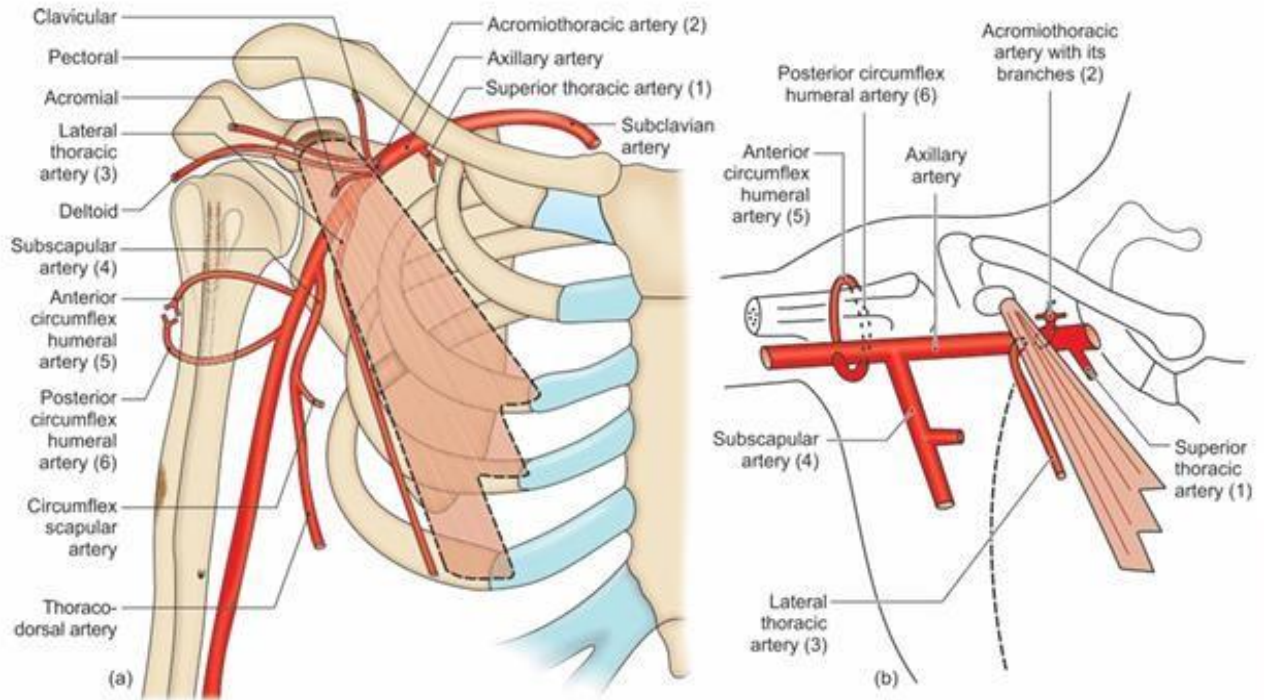


Fig. 3.9: Lymph nodes draining the breast. Radial incision is shown to drain breast abscess

Ref.: BD Chaurasiya, 8th edition, Fig. No. 3.9, Pg. No. 41

2.

2. Axillary artery: extent, parts and branches



Figs 4.10a and b: The branches of the axillary artery

Ref.: BD Chaurasiya, 8th edition, Fig. No. 4.10, Pg. No. 57

Brachial Plexus: formation and branches

3.

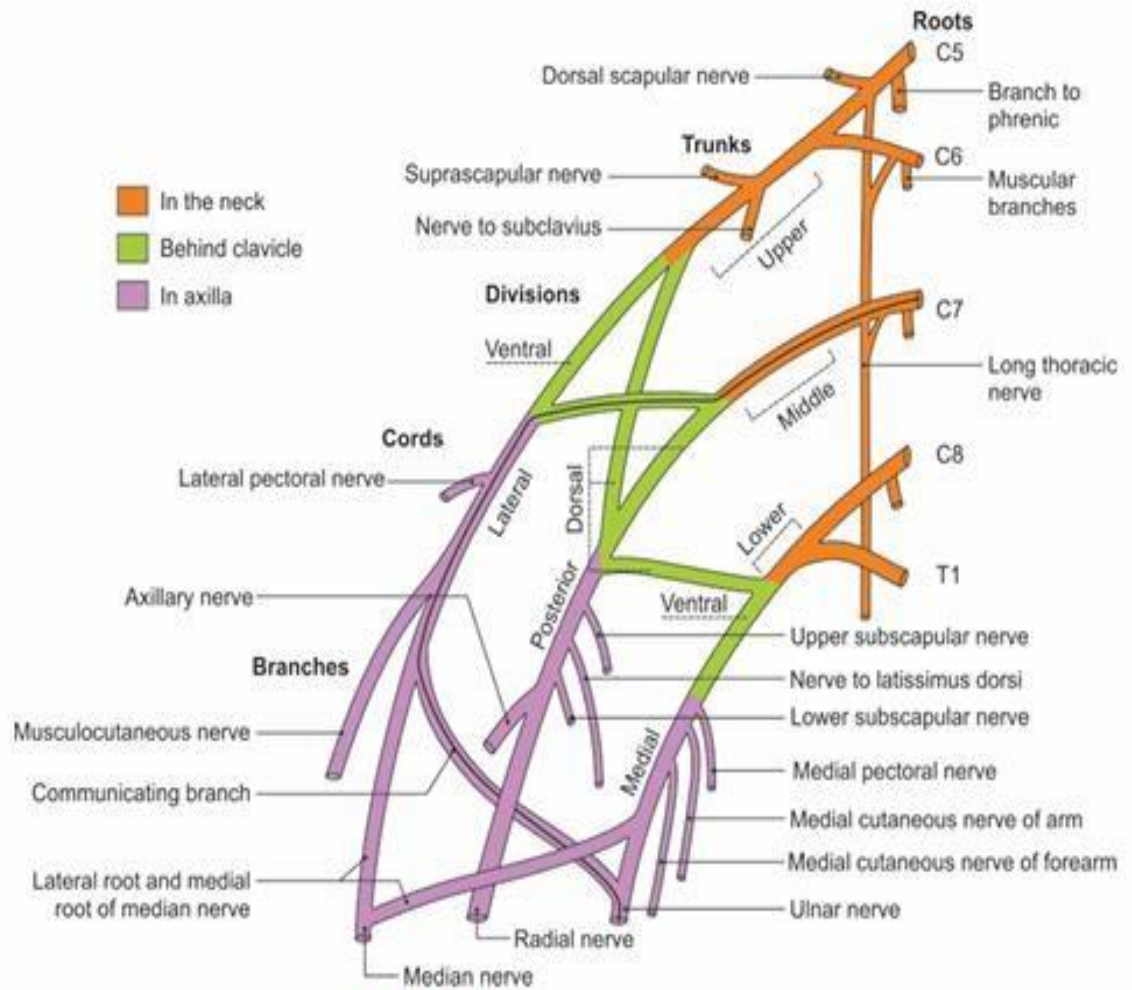


Fig. 4.14: The right brachial plexus

Ref.: BD Chaurasiya, 8th edition, Fig. No. 4.14, Pg. No. 60

4.

Rotator cuff of shoulder joint

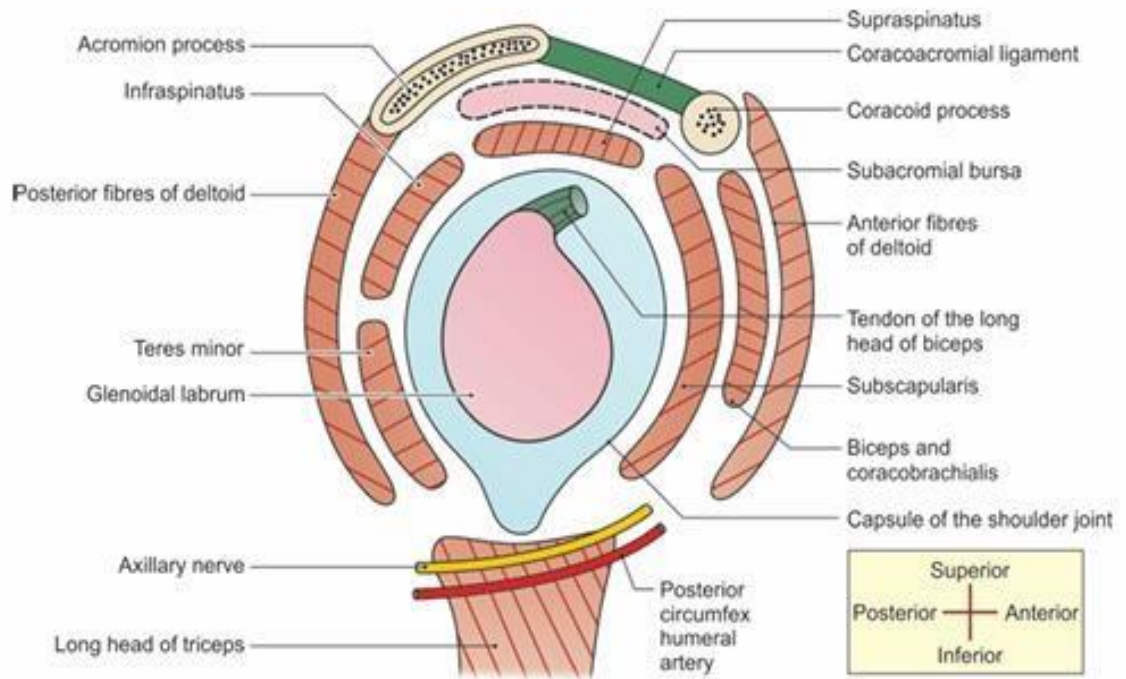


Fig. 10.4c: Schematic sagittal section showing relations of the shoulder joint

Ref.: BD Chaurasiya, 8th edition, Fig. No. 10.4c, Pg. No. 159
Intermuscular spaces of scapular region

5.

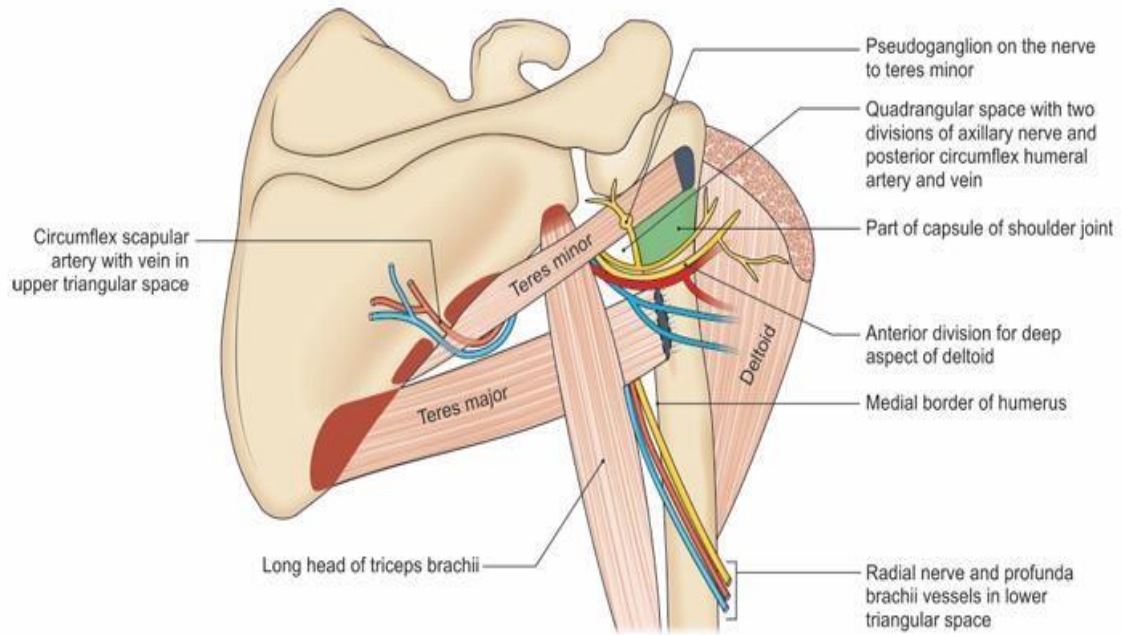


Fig. 6.11: The intermuscular spaces in the scapular region, including the quadrangular, upper triangular and lower triangular spaces

Ref.: BD Chaurasiya, 8th edition, Fig. No. 6.11, Pg. No. 79

Transverse section at midarm

6.

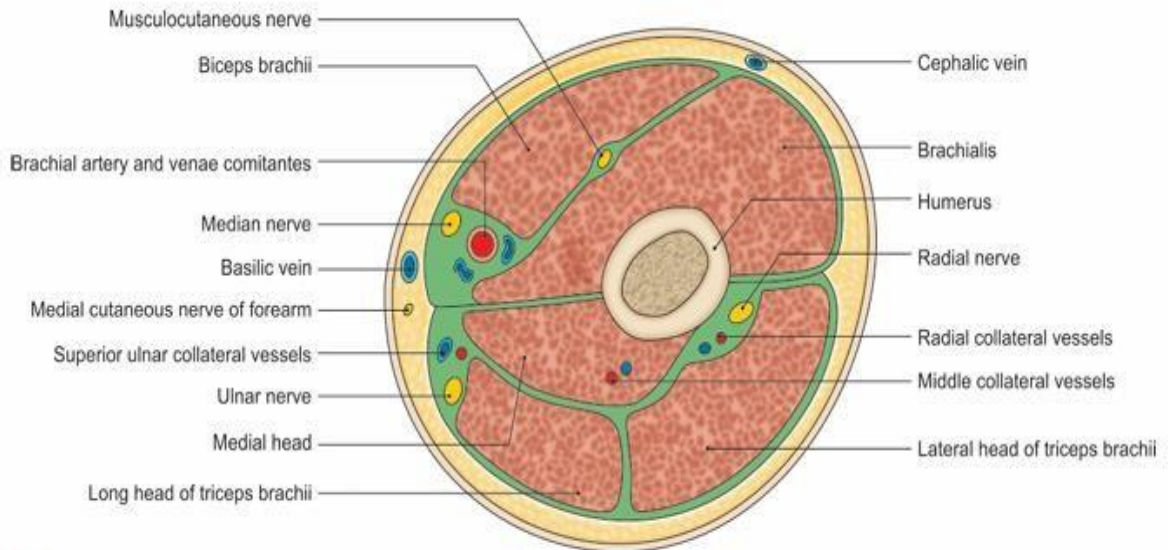


Fig. 8.21: Transverse section through the arm a little below the insertion of the coracobrachialis and deltoid showing arrangement of three heads of the triceps, and the radial nerve in the radial groove

Ref.: BD Chaurasiya, 8th edition, Fig. No. 8.21, Pg. No. 107

Boundaries and content of cubital fossa

7.

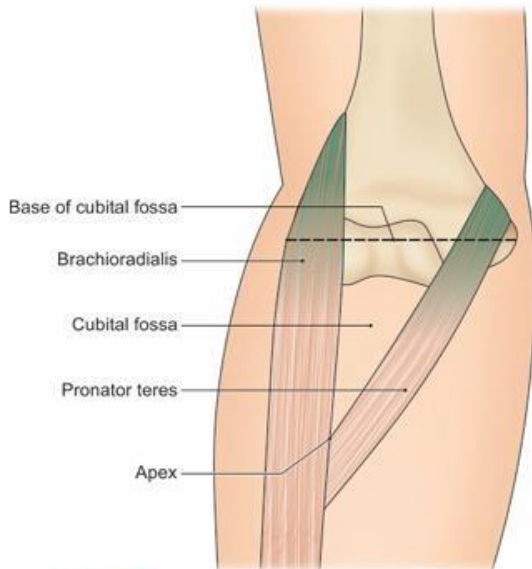


Fig. 8.14: Boundaries of the right cubital fossa

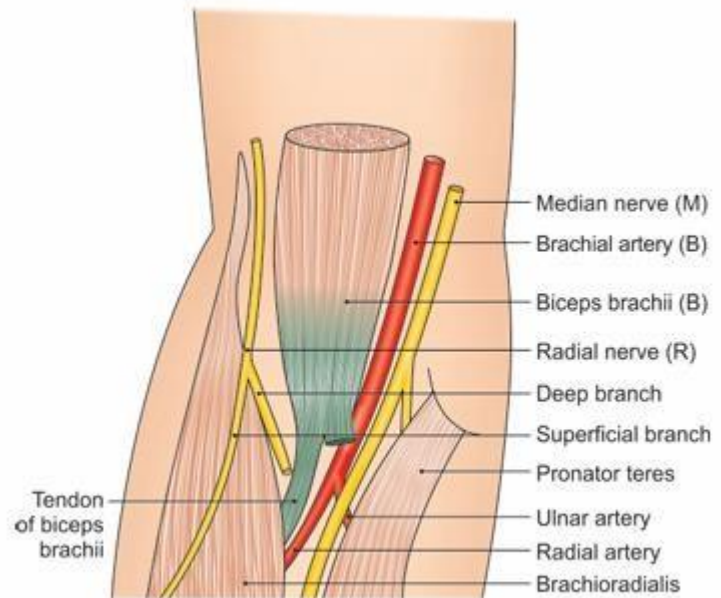


Fig. 8.17: Contents of the right cubital fossa; mnemonic—MBBR

Ref.: BD Chaurasiya, 8th edition, Fig. No. 8.14 & 8.17, Pg. No. 103 & 104

8.

Arterial supply of upper limb

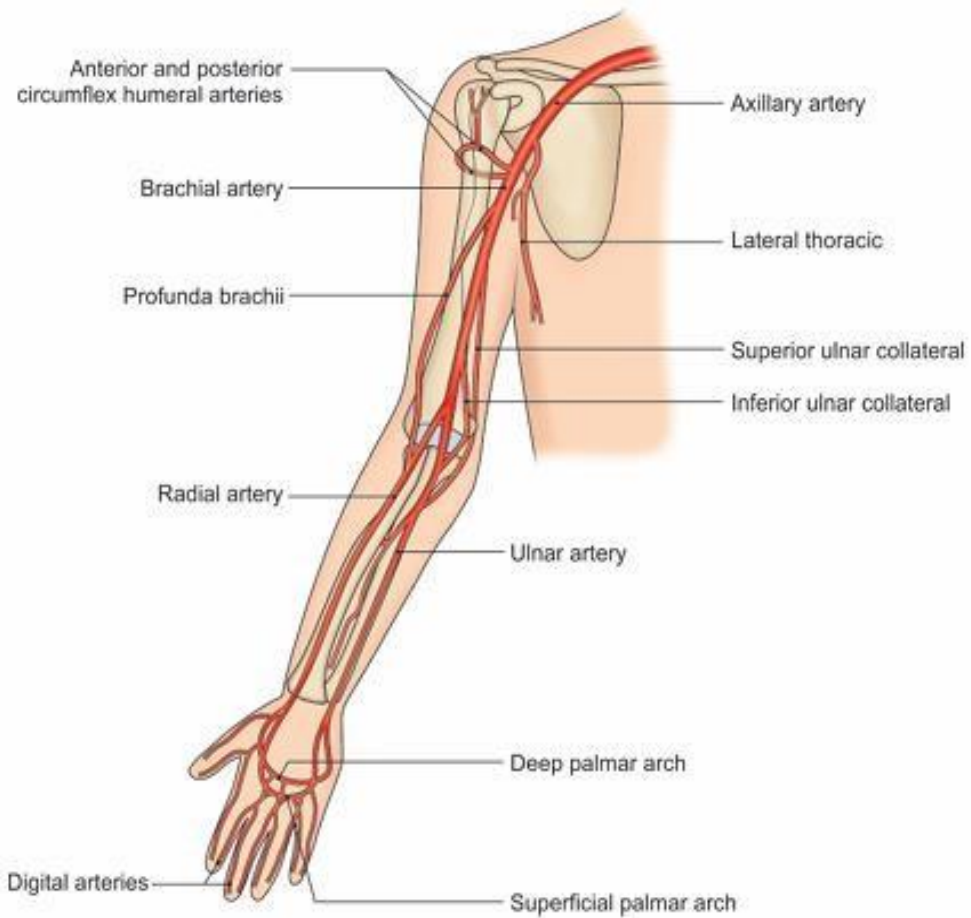
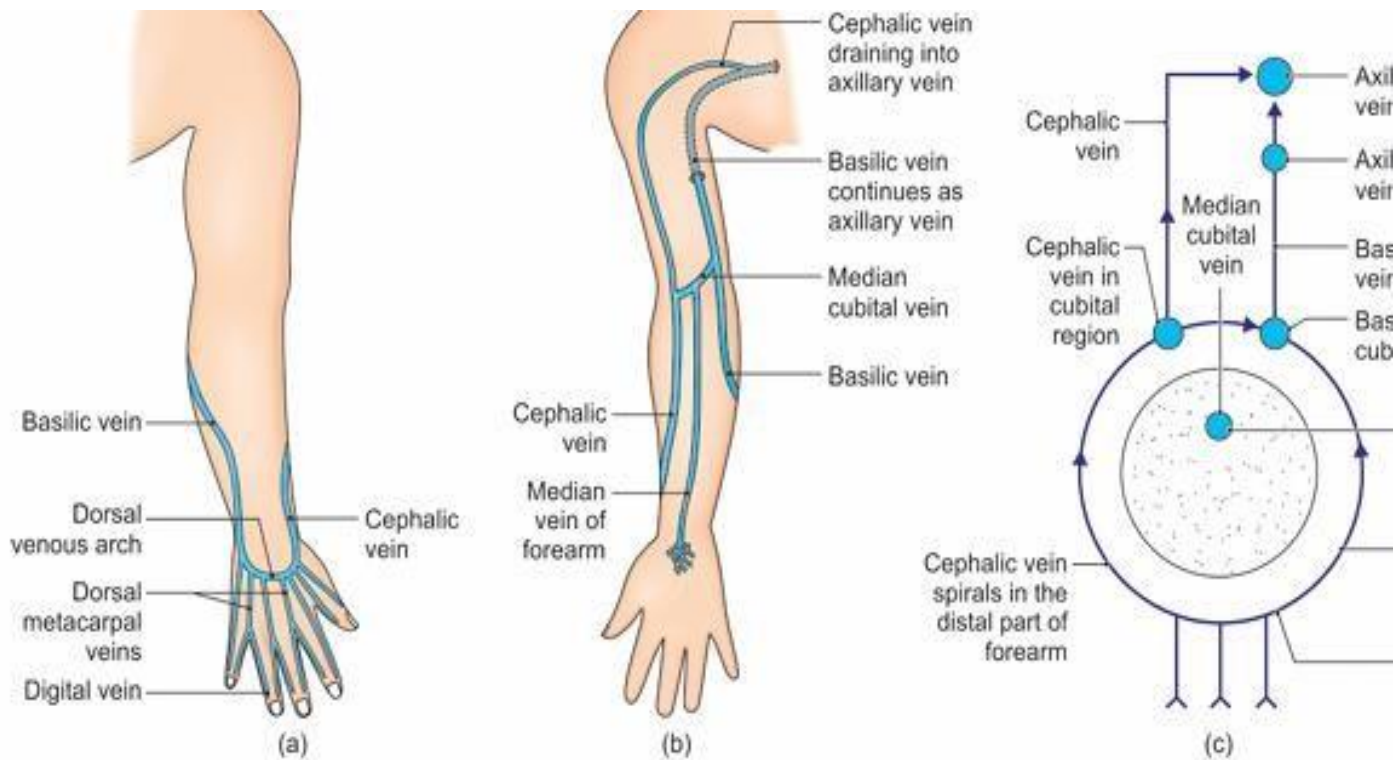


Fig. A1.3: Arteries of the upper limb

Ref.: BD Chaurasiya, 8th edition, Fig. No. A1.3, Pg. No. 199

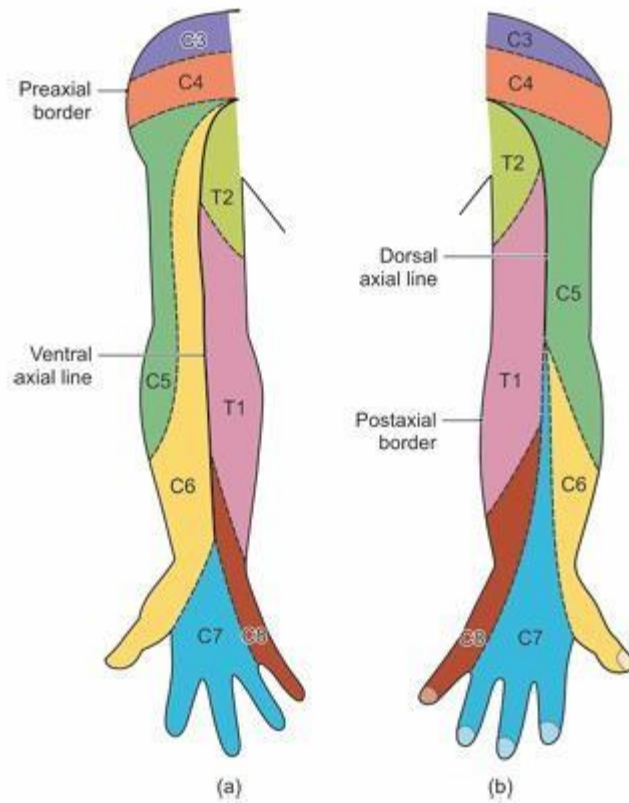
9. Superficial veins of upper limb (front & back)



Figs 7.7a and b: The superficial veins of the upper limb: (a) On the back, (b) on the front of the limb, and (c) s

Ref.: BD Chaurasiya, 8th edition, Fig. No. 7.7, Pg. No. 88

10. Dermatomes of upper limb (front and back)



Figs 7.6a and b: Dermatomes: (a) Anterior aspect, and (b) posterior aspect

Ref.: BD Chaurasiya, 8th edition, Fig. No. 7.6, Pg. no. 87

11. Courses and branches of axillary and radial nerves

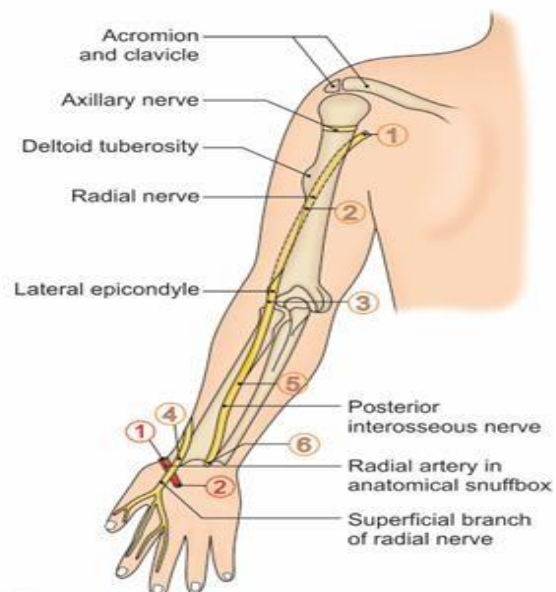
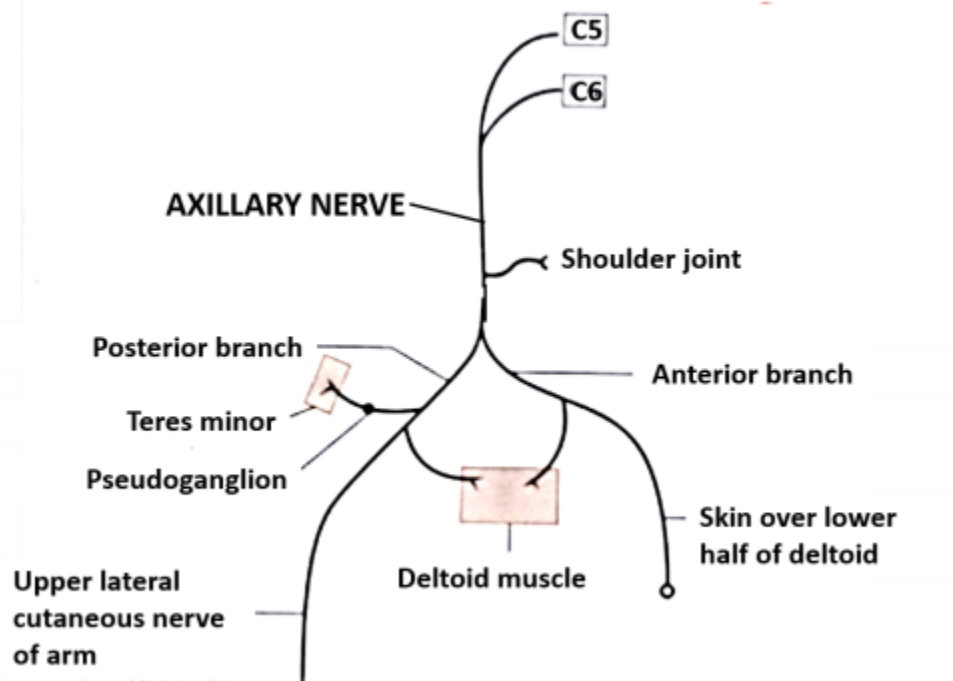


Fig. 11.4: Surface projection of axillary, radial, posterior interosseous nerves and radial artery in anatomical snuffbox (posterior view of left limb)

Ref.: <https://anatomyqa.com/axillary-nerve-branches/> & BD Chaurasiya, 8th edition, Fig. No. 11.4, Pg. No. 181

12.

Courses and branches of musculocutaneous and median nerve

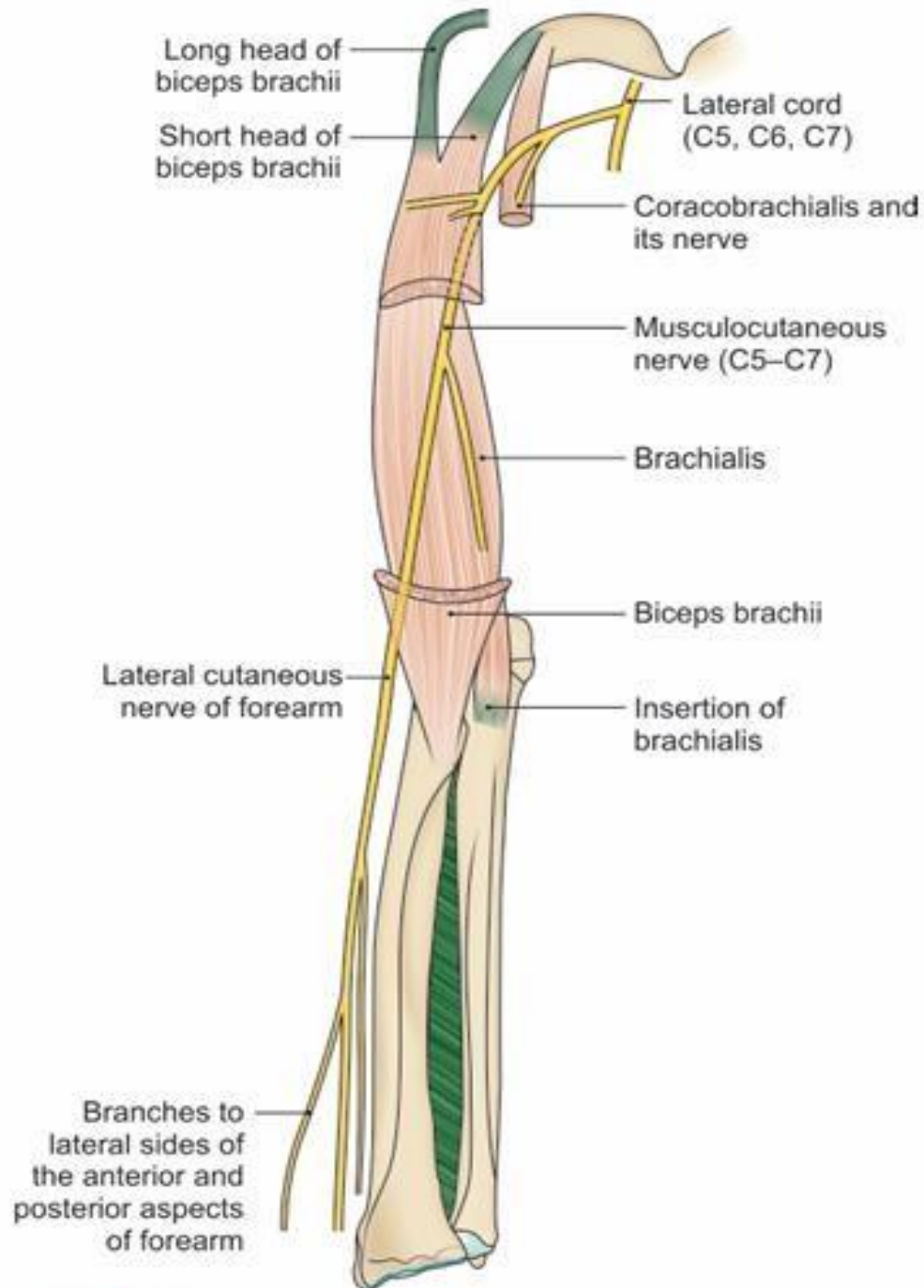


Fig. 8.6: The course of the musculocutaneous nerve

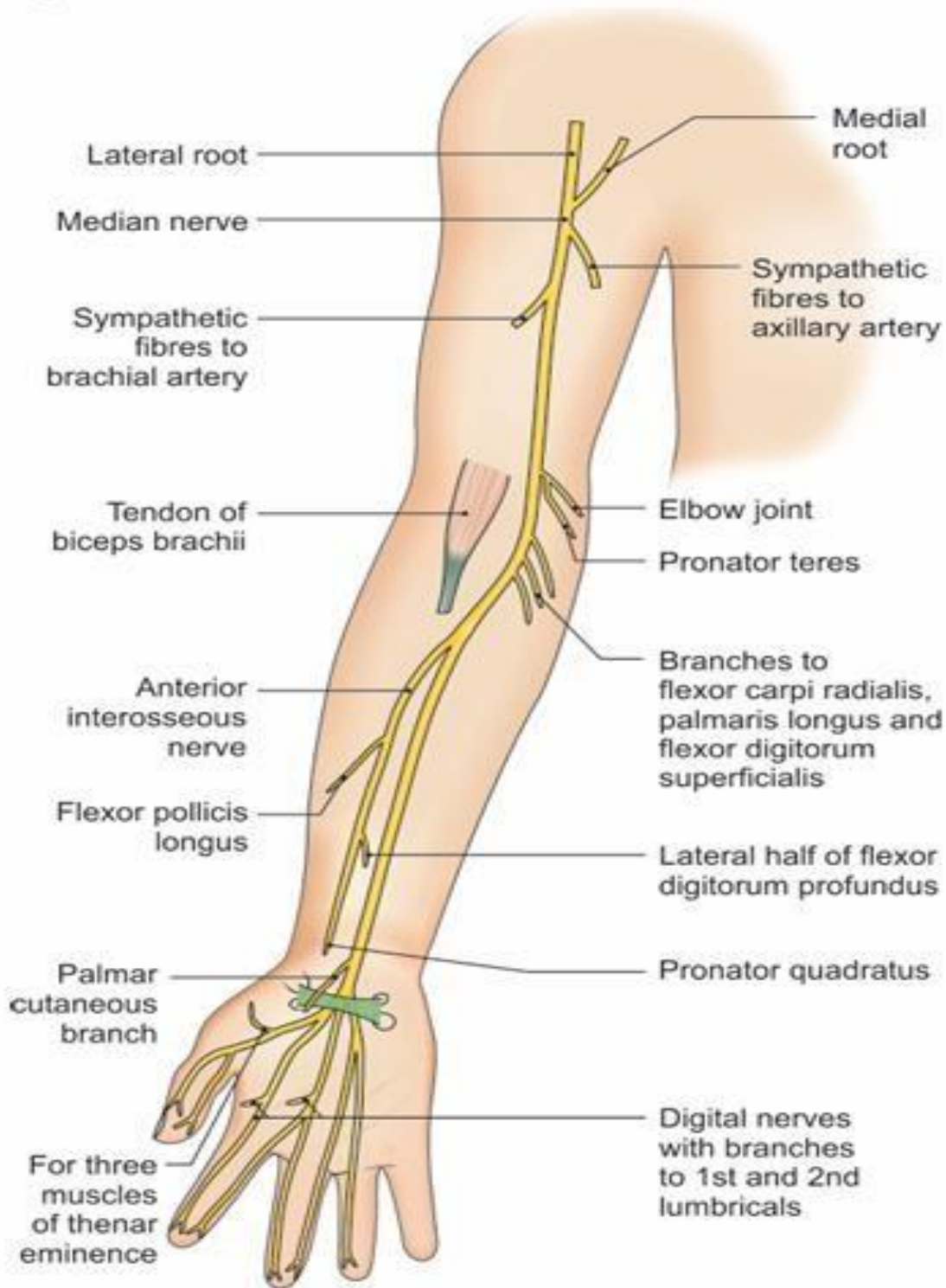


Fig. 9.12: Distribution of median nerve

Ref.: BD Chaurasiya, 8th edition, Fig. No.8.6 & 9.12, Pg. No. 98 &

13. Courses and branches of ulnar nerve

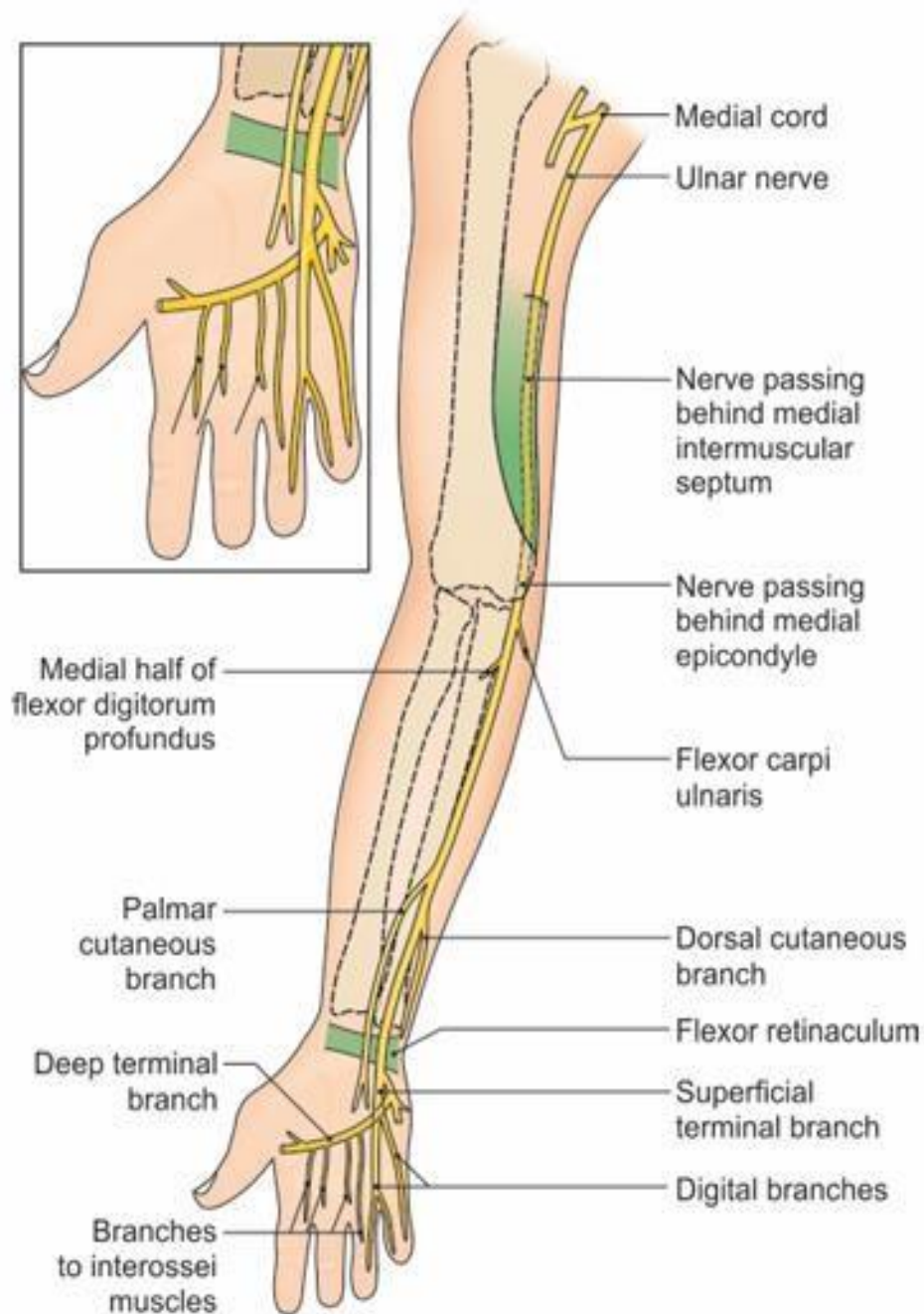


Fig. 9.13: Course and branches of ulnar nerve

Ref.: BD Chaurasiya, 8th edition, Fig. No. 9.13, Pg. No. 123

14. Transverse section through carpal tunnel

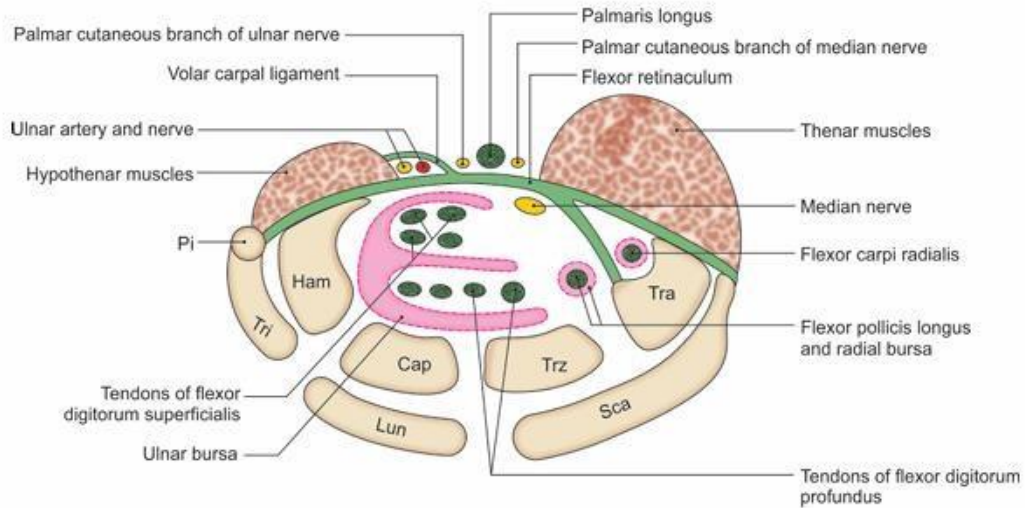


Fig. 9.15: Flexor retinaculum with its relations (schematic). Sca: scaphoid; Lun: lunate; Tri: triquetrum; Pi: pisiform; Tra: trapezium; Trz: trapezoid; Cap: Capitate; Ham: hamate

Ref.: BD Chaurasiya, 8th edition, Fig. No. 9.15, Pg. No. 125

15. Transverse section through hand showing palmer spaces

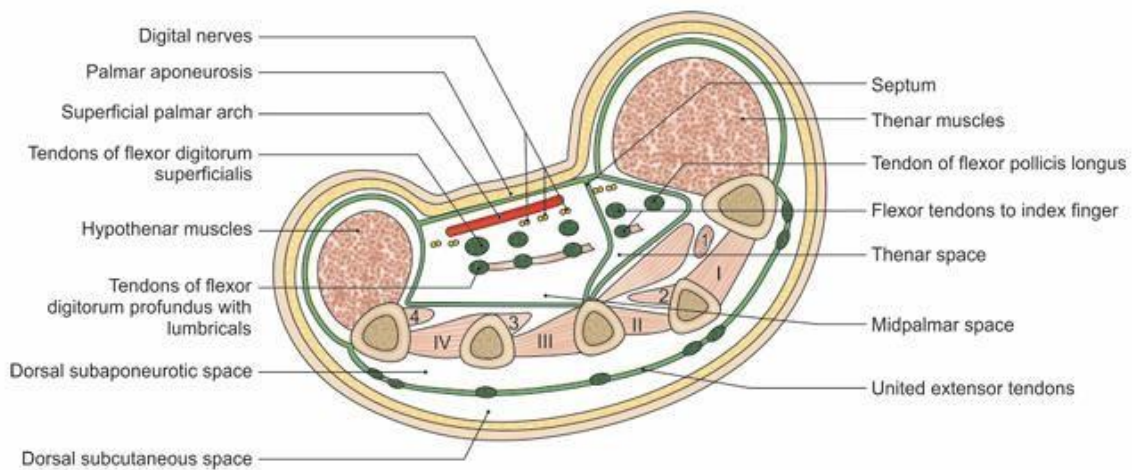


Fig. 9.48: Thenar, midpalmar, dorsal subcutaneous and dorsal subaponeurotic spaces. I, II, III, IV — dorsal interossei and 1, 2, 3, 4 — palmar interossei

Ref.: BD Chaurasiya, 8th edition, Fig. No. 9.48, Pg. No. 142