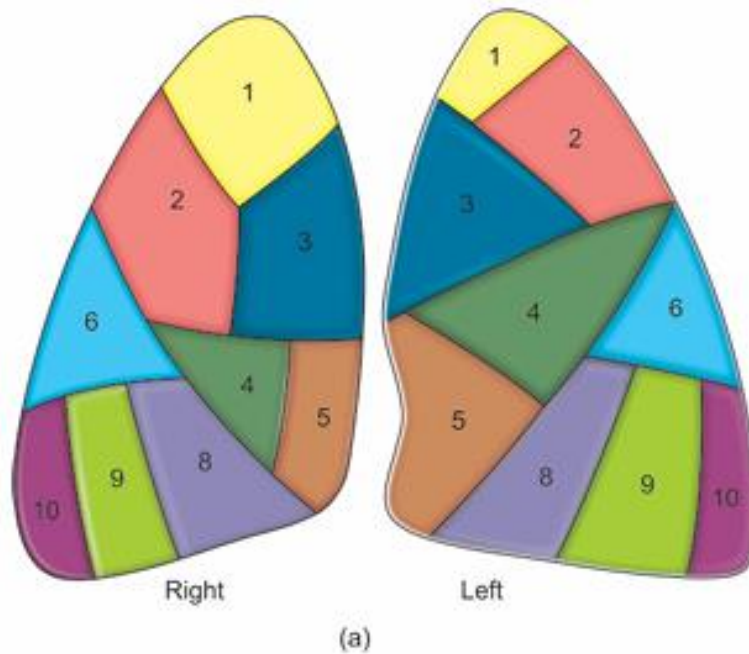


# Thorax

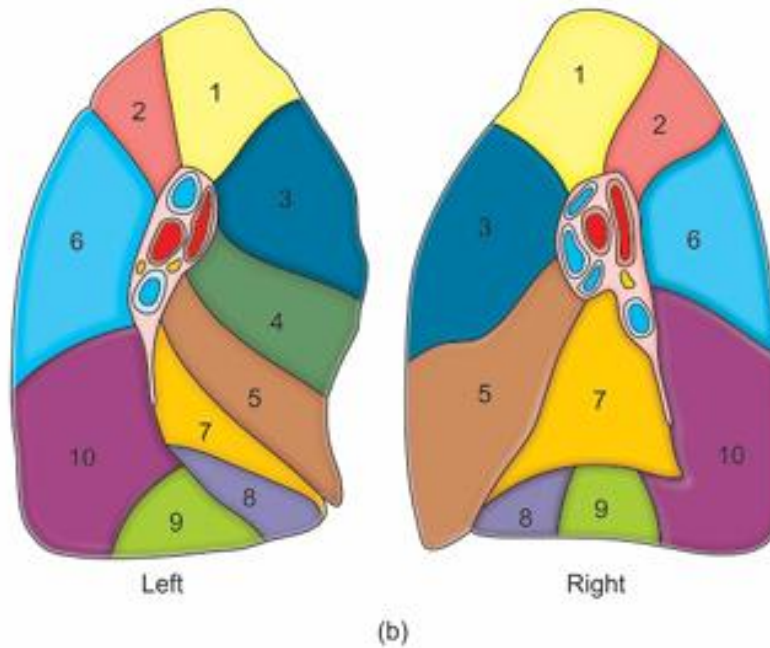
## 1. Right lung: Bronchopulmonary segments



Right lung		
<b>Upper lobe</b>	<b>Middle lobe</b>	<b>Lower lobe</b>
1. Apical	4. Lateral	6. Superior
2. Posterior	5. Medial	7. Medial basal
3. Anterior		8. Anterior basal
		9. Lateral basal
		10. Posterior basal

**Ref.:** BD Chaurasiya, 8<sup>th</sup> Edition, 1<sup>st</sup> Part, Fig. No. 16.8, Pg. No. 271

## 2. Left Lung: Bronchopulmonary segments

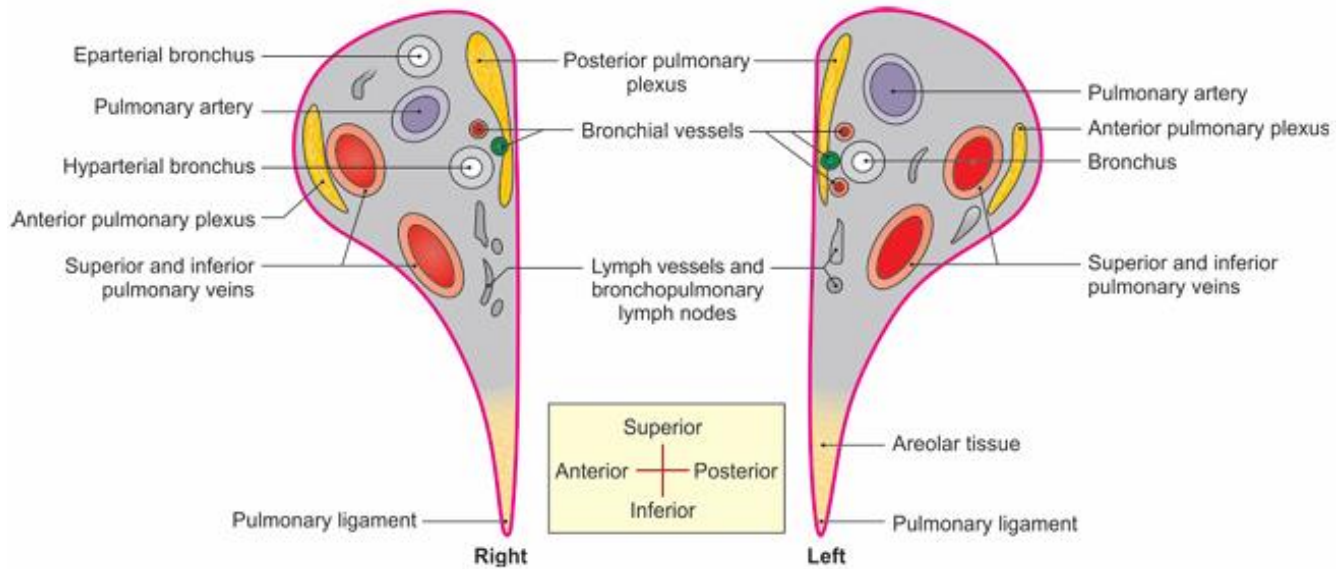


Left lung	
<b>Upper lobe</b>	<b>Lower lobe</b>
1. Apical	6. Superior
2. Posterior	7. Medial basal
3. Anterior	8. Anterior basal
4. Superior lingular	9. Lateral basal
5. Inferior lingular	10. Posterior basal

**Ref.:** BD Chaurasiya, 8<sup>th</sup> Edition, 1<sup>st</sup> Part, Fig. No. 16.8, Pg. No. 271

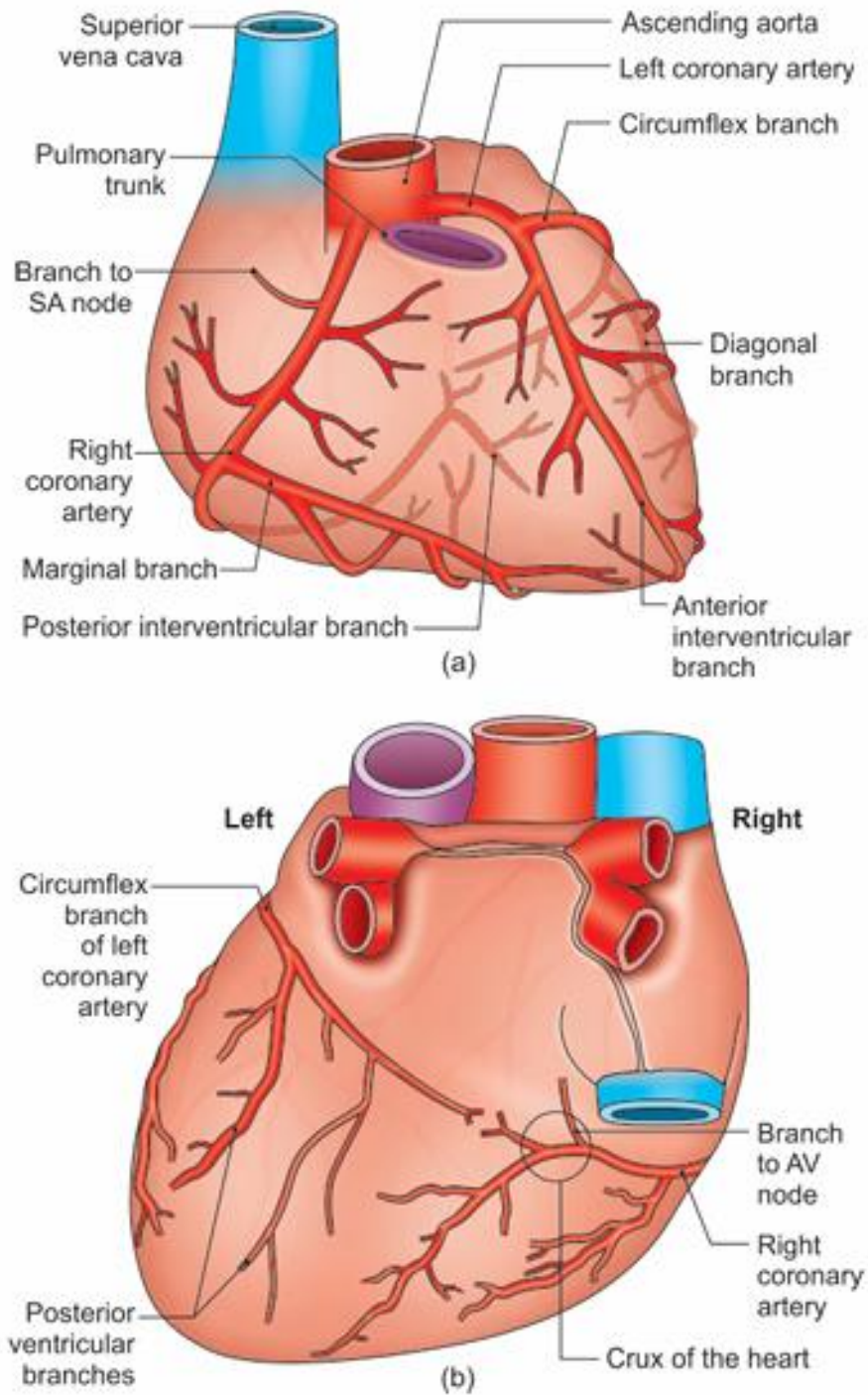
**3. Medial surface of right lung showing contents of hilum and visceral relations**

**4. Medial surface of left lung showing contents of hilum and visceral relations**



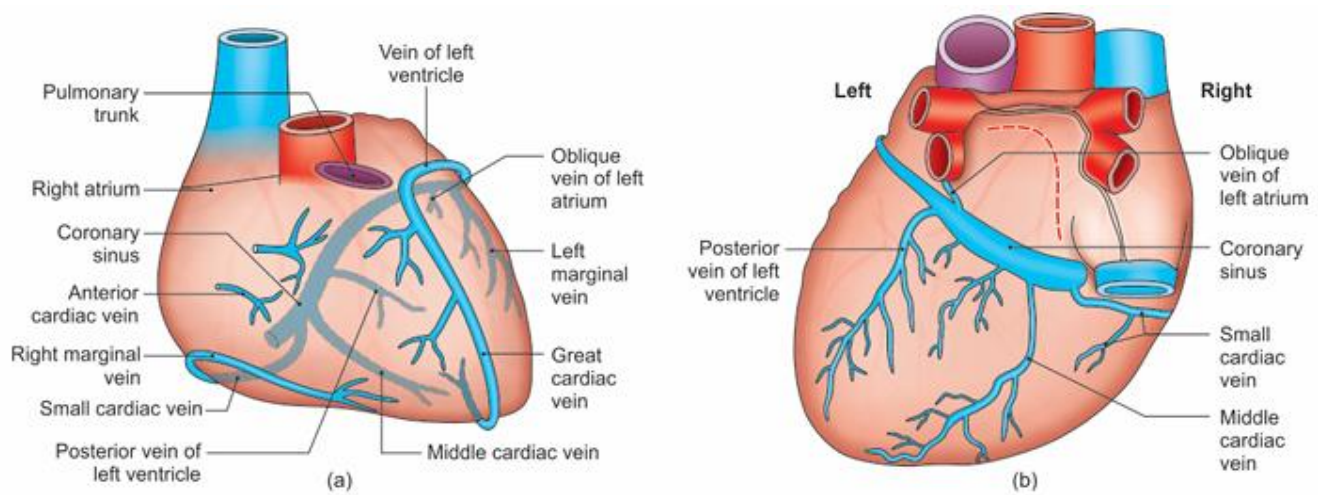
**Ref.:** BD Chaurasiya, 8<sup>th</sup> Edition, 3<sup>rd</sup> Part, Fig. 16.4, Pg. No. 268

## 5. Arterial supply of heart



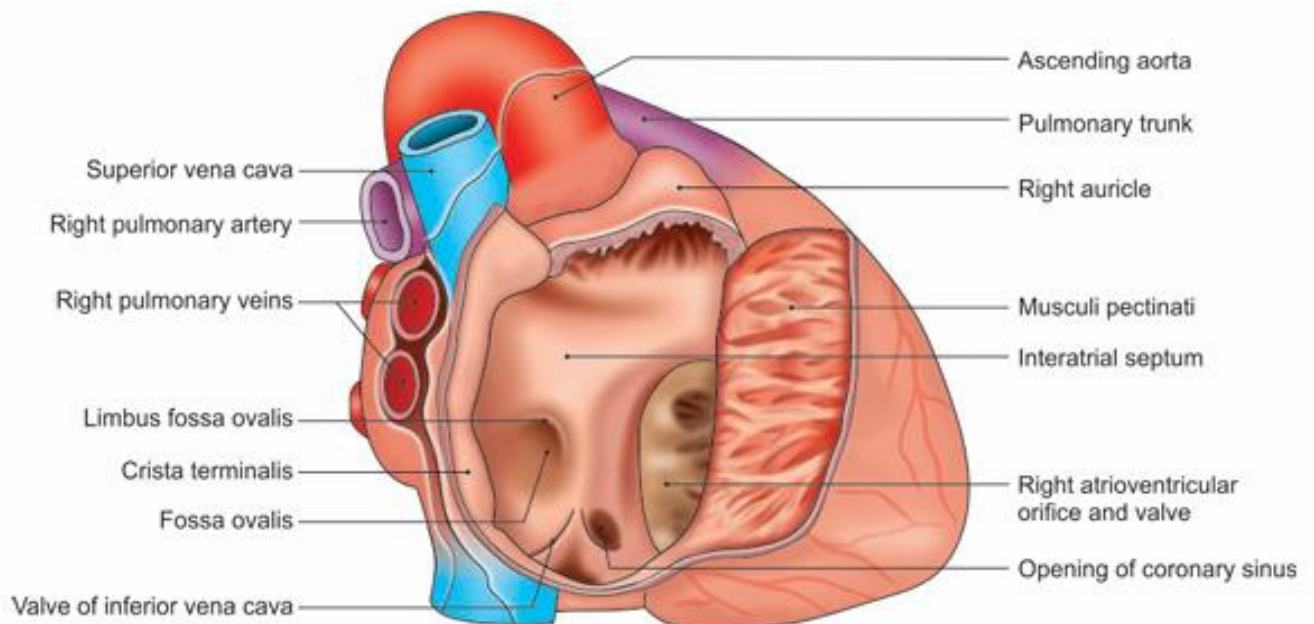
Ref.: BD Chaurasiya, 8<sup>th</sup> Edition, 3<sup>rd</sup> Part, Fig. No. 18.22, Pg. No. 299

## 6. Venous drainage of heart



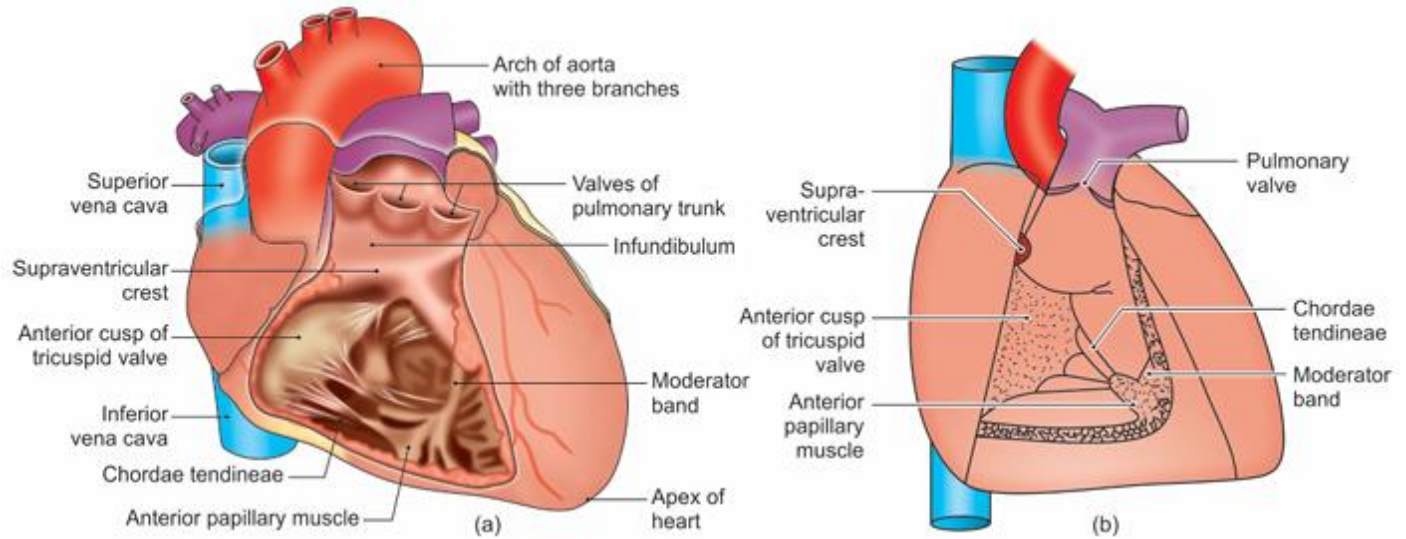
**Ref.:** BD Chaurasiya, 8<sup>th</sup> Edition, 3<sup>rd</sup> Part, Fig. No. 18.29, Pg.No. 302

## 7. Interior of right atrium



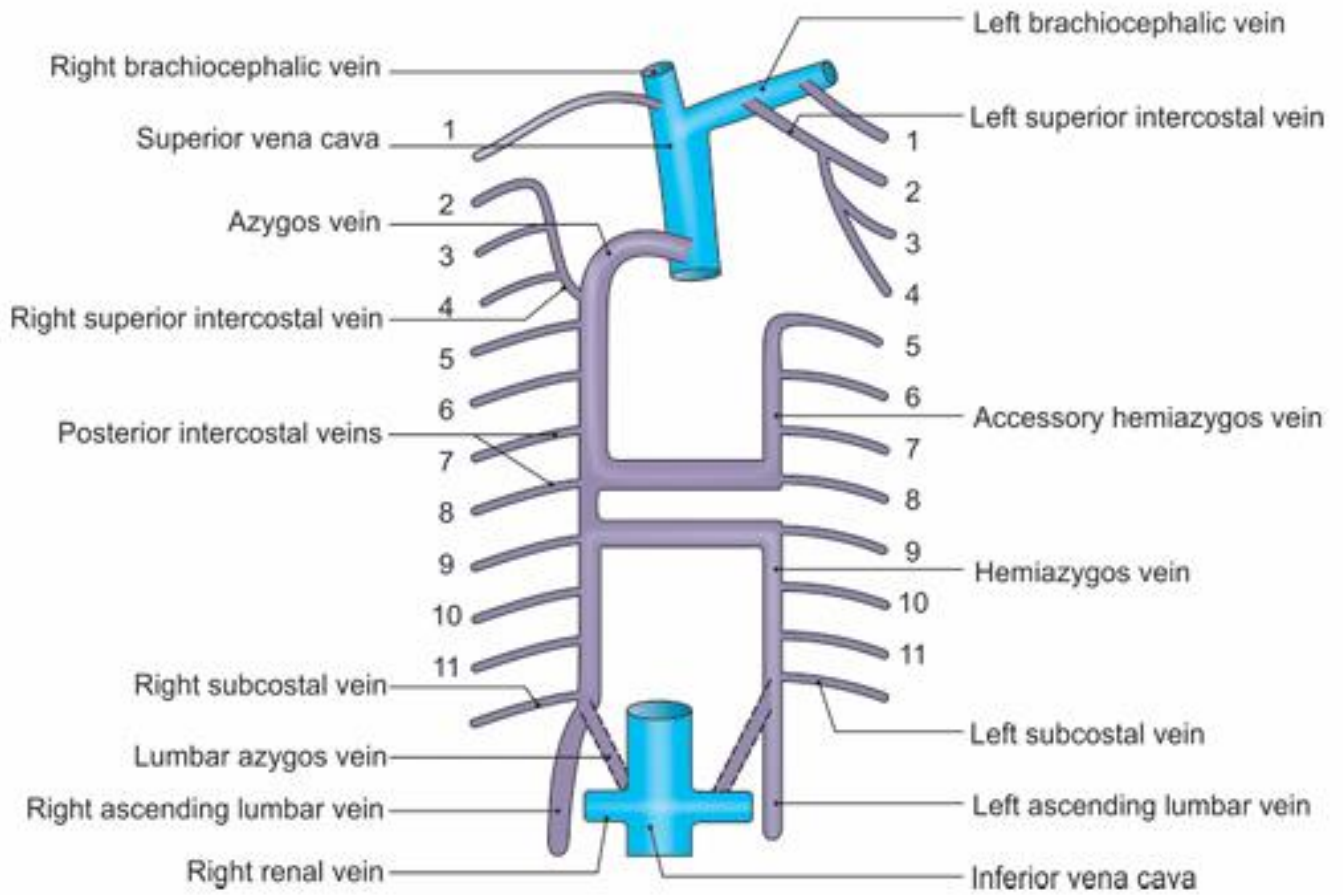
**Ref.:** BD Chaurasiya, 8<sup>th</sup> Edition, 3<sup>rd</sup> Part, Fig. No.18.11, Pg. No.290

## 8. Interior of right ventricle



Ref.: BD Chaurasiya, 8<sup>th</sup> Edition, 3<sup>rd</sup> Part, Fig. No.18.12, Pg. No. 291

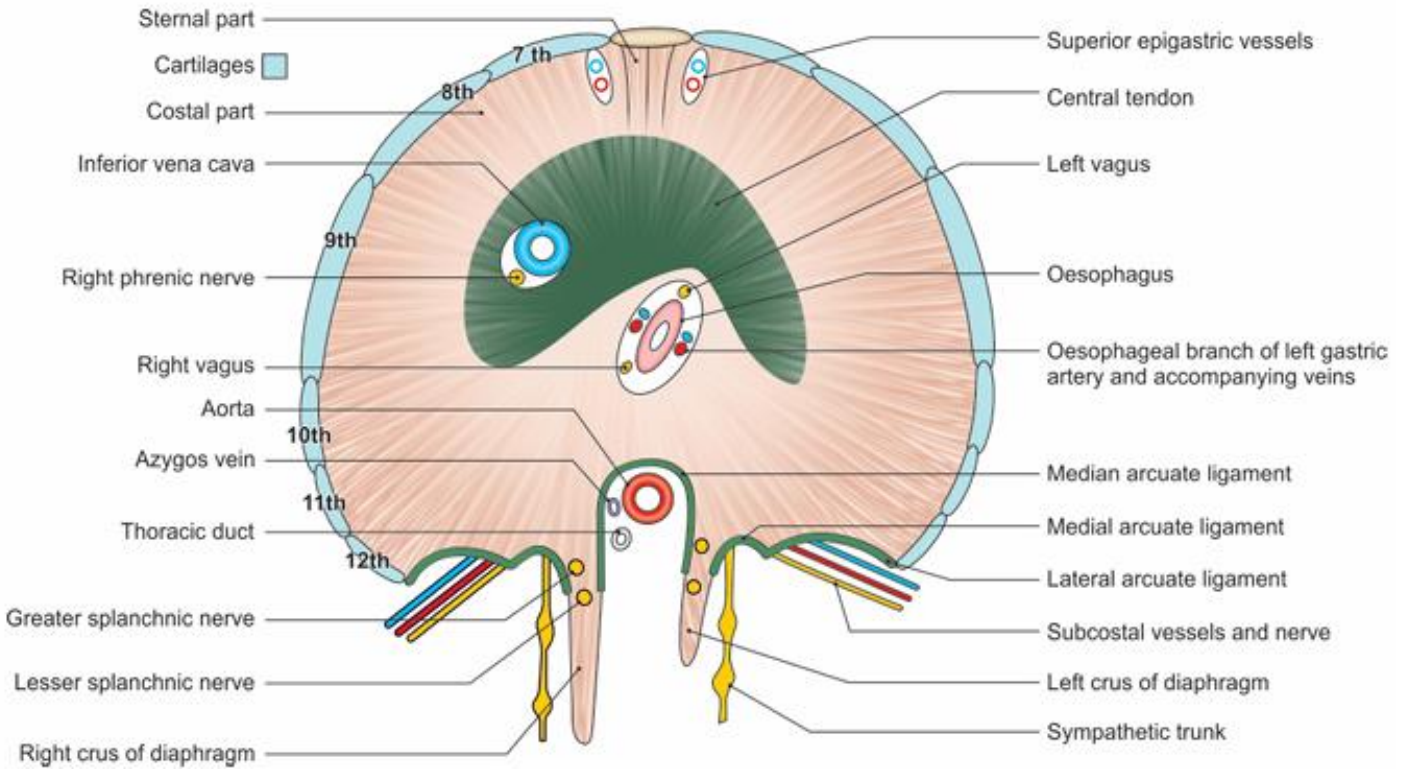
## 9. Azygos vein: formation, tributaries and drainage



**Ref.:** BD Chaurasiya, 8<sup>th</sup> Edition, 3<sup>rd</sup> Part, Fig. No.14.10, Pg. No.247

**10. Transverse section at the level of fourth thoracic vertebrae**

## 11. Structures piercing the diaphragm



**Ref.:** BD Chaurasiya, 8<sup>th</sup> Edition, 3<sup>rd</sup> Part, Fig. No.12.16, Pg. No.216