

**Audi A5 Coupè**



Technical Data	
	Audi A5 Coupe 2.0 TFSI
<b>Engine</b>	
Propellant	Petrol
Type	4-cylinder SI engine 2.0 l
Engine capacity	1984
Max. output kW (PS)	180 (245)
Max. torque (Nm)	370
<b>Transmission</b>	
Gearbox	7-speed S tronic
Drivetrain	quattro all-wheel drive
<b>Performance</b>	
Acceleration 0-100 km/h	5.5
Top Speed (km/h)	250
Fuel consumption, urban/ extra-urban/ combined in l/100km	9.2/ 6.0/ 7.2
Steering	Electromechanical power steering
Suspension	Standard suspension
<b>Brakes</b>	
Front	Disc brakes in front,17-inch (NAO)
Rear	Disc brakes in rear,17-inch (NAO)
<b>Measurements</b>	
Wheelbase (mm)	2764
Length (mm)	4697
Height (mm)	1371
Width (without mirrors/ mirrors unfolded) (mm)	1846/ 2029
Track (front/rear) (mm)	1587/ 1568
Unladen weight (kg)	1560
Turning circle (mm)	11500
Luggage volume (litres)	450
Fuel tank (litres)	58

Price Rp. 1,346,000,000,- off the road		
Standard/ Optional Equipment		
	Standard	Optional
<b>Safety</b>		
Space-saving spare wheel	●	
Tool kit and jack	●	
First aid kit	●	
First aid kit with warning triangle and safety vests		○
ISOFIX child seat anchors and top tether for the rear seats	●	
Manual child safety lock	●	
ISOFIX child seat anchors for front passenger seat		+
Power-operated child safety lock		
Full-size airbags with front passenger airbag deactivation		
Side airbags in front and curtain airbag system	●	
Electronic immobilizer	●	
Tire pressure monitoring system	●	
Start/stop system	●	
Seat belt reminder	●	
<b>Technology &amp; Assistant Systems</b>		
Audi drive select	●	
Head-up display		○
Luggage compartment lid, electrically opening & closing	●	
Luggage compartment lid, automatically opening		○
Remote control key (without SAFELOCK)	●	
Cruise control system with speed limiter	●	
Hold assist	●	
Rear parking aid		○
Parking aid plus		+
Rear view camera system		
Park Assist package (360 camera + Park Assist with Parking Aid plus)		+
Rear view camera system		○
Leather-wrapped steering wheel, 3-spoke with multifunction plus		+
Audi virtual cockpit Plus		
<b>Exterior</b>		
S line bumpers	●	
Heat-insulating glass	●	
High-Gloss Styling package	●	
Exterior mirrors, power-adjustable, heated and power-folding, auto-dimming on both sides, with memory feature	●	
Headlamp	●	

Separate daytime running light	•	
LED rear combination lamps	•	
Matrix LED headlamps with Audi laser light, dynamic lighting scheme and dynamic turn signal		+
LED rear combination lamps with dynamic turn signal		
Headlamp washer system		
Matrix LED headlamps with dynamic turn signal		+
LED rear combination lamps with dynamic turn signal		
Accent surfaces painted in Matte Black	•	
Engine cover	•	
Panoramic glass sunroof		○
Disc brakes in rear, 17-inch, brake caliper painted in Red (ECE)		+
Disc brakes in front, 17-inch, brake caliper painted in Red (ECE)		
<b>Comfort</b>		
Standard suspension system	•	
Sports suspension		○
Suspension system with damper control		○
Power front seats with memory feature for the driver seat	•	
4-way lumbar support for the front seats	•	
Windshield with acoustic glass	•	
Comfort center armrest in front	•	
Cigarette lighter and ashtray	•	
Comfort key with sensor-controlled luggage compartment release with SAFELOCK		+
Anti-theft alarm system		
Comfort key incl. sensor-controlled luggage compartment release		○
Pneumatically adjustable lumbar support with massage feature for front seats		○
<b>Interior</b>		
Leather-wrapped multi-function steering wheel, 3-spoke	•	
Leather-wrapped steering wheel, 3-spoke, with multi-function Plus		○
Leather-wrapped steering wheel, 3-spoke, with multi-function Plus and steering wheel heating		○
Sports contour leather-wrapped steering wheel w/ multi-function Plus, 3-spoke, flat-bottomed		○
Auto-dimming interior rearview mirror, frameless	•	
Decorative inserts in Silver Aluminum Ellipse	•	
Decorative inserts in Black Piano Lacquer, Audi exclusive		○
Decorative inserts in Brown Burr Walnut		○
Decorative inserts in Gray Natural Oak		○
Sun visor on driver and front passenger side	•	
Automatic air conditioning system	•	

3-zone climate control system		○
Leather/leatherette "mono.pur 550" combination	●	
Standard seats in front	●	
Sports seats in front		○
Seat heaters in front		○
Scuff plates with aluminum inserts in front, illuminated, with "S" logo	●	
Sport seats with seat ventilation in front		○
S line interior		○
<b>Entertainment &amp; Communication</b>		
Audi sound system	●	
Bang & Olufsen Premium Sound System with 3D sound		○
Bluetooth interface	●	
Ambient Lighting package (1 color)	●	
Contour/Ambient Lighting package, multi-color		○
Audi smartphone interface		○
MMI Navigation plus with MMI touch		○
<b>Wheels</b>		
Forged alloy wheels, 15-spoke style, 7.5J x 17 with 225/50 R17 tires	●	
Alloy wheels, 5-double-spoke star style, 8.5J x 18, 245/40 R18 tires		○
Alloy wheels, 5-parallel-spoke style, 8.5J x 19, 255/35 R19 tires		○
Cast aluminum wheels-19 inch - in multi-spoke design, contrasting gray, partly polished		○
Audi Sport cast alloy wheels, 5-double- arm style, Matte Titanium Look, diamond-turned, 8.5J x 19 with 255/35 R19 tires		○
Audi Sport cast alloy wheels, 5-arm-pylon style, Matte Titanium Look, diamond-turn, 8.5J x 19, 255/35 R19 tires		○
Audi Sport cast alloy wheels, 10-spoke-V style, 8.5Jx19 with 255/35 R19 tires		○
Audi Sport cast alloy wheels, 10-spoke-star style, Platinum Look, diamond-turned, 8.5Jx19 with 255/35 R19 tires		○

- Optional
- + Package

## Exterior Color

### Solid

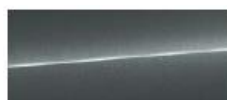


Turbo Blue



Ibis White

### Pearl effect



Daytona Gray  
Pearlescent

### Metallic



Tango Red  
Metallic



Mythos Black  
Metallic

## Interior Color



Black



Okapi Brown

## Optional Features



Alloy wheels, 5-double-spoke star style, 8.5J x 18, 245/40 R18 tires



Audi Sport cast alloy wheels, 10-spoke V-style, 8.5J x 19, 255/35 R19 tires



Audi Sport cast alloy wheels, 5-double-arm style, Matte Titanium Look, diamond-turned, 8.5J x 19, 255/35 R19 tires



Alloy wheels, 5-parallel-spoke style 8.5J x 19, 255/35 R19 tires



Cast aluminum wheels 19 inch, in multi-spoke design, contrasting gray 8.5J x 19, 255/35 R19 tires



Audi Sport cast alloy wheels, 5-arm pylon style, Matte Titanium Look, diamond-turned, 8.5J x 19, 255/35 R19 tires



Audi Sport cast alloy wheels, 10-spoke star style, Platinum Look, diamond-turned, 8.5J x 19, 255/35 R19 tires



Cast aluminum wheels, 19 inch in 5-spoke Cavo design (S design), contrasting gray 8.5J x 19, 255/35 R19 tires