

# For Residential and Commercial Applications

Job Name		Engineer / Architect	
Job Location		Wholesaler	
Submittal Date		Contractor	

## DRS44M & DRS44MAA Integral Shut-Off Straight Stop w/ Screwdriver Slot – Female Sweat x Male Sweat

**Use:** For use in potable water distribution systems. Not intended for recirculating water systems that produce continuous use temperatures above 115° F. For those applications, use BrassCraft KT series ball stops

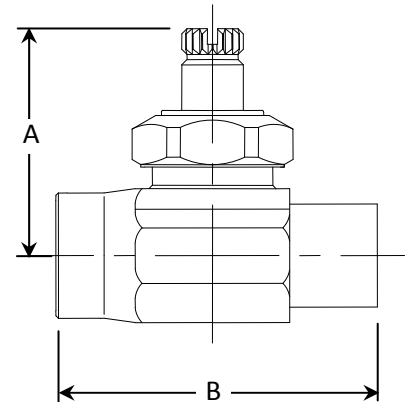
### Design Features:

- **Machined one-piece brass body** provides strength, durability and long-lasting performance
- **Screwdriver slot handle** helps protect against accidental stop operation during rough-ins and in general use

### Operating Specifications:

**Temperature:** 40° - 140° F

**Pressure:** 125 psi maximum



MATERIAL SPECIFICATIONS	
<b>Valve Body</b>	C36000 brass
<b>Screwdriver Slot Stem</b>	C36000 brass
<b>Check Spring*</b>	Bronze
<b>Bib &amp; Packing Washers</b>	Nitrile or EPDM rubber
<b>Packing Nut</b>	C36000 brass

PART DIMENSIONS (Inches)		
Model	DIM. A	DIM. B
DRS44M	1.38	1.95
DRS44MAA	1.38	1.95

\*Where specified

### Standard Part Listing:

- ☐ DRS44M C 1/2" Nom. Female Sweat x 1/2" Nom. Male Sweat w/ screwdriver slot, chrome plated
- ☐ DRS44M R 1/2" Nom. Female Sweat x 1/2" Nom. Male Sweat w/ screwdriver slot, rough brass
- ☐ DRS44M RBT 1/2" Nom. Female Sweat x 1/2" Nom. Male Sweat w/ screwdriver slot, rough brass, bulk with plain tray
- ☐ DRS44M R1 1/2" Nom. Female Sweat x 1/2" Nom. Male Sweat w/ screwdriver slot, rough brass, window tray
- ☐ DRS44MAA R100 1/2" Nom. Female Sweat (with check) x 1/2" Nom. Male Sweat w/ screwdriver slot, rough brass, bulk packed 100 per carton

### Listings & Certifications:

- IAPMO listed to ASME A112.18.1-05 / CSA B125.1-05 (File # 0645)
- CSA listed to ASME A112.18.1-05 / CSA B125.1-05 (File # 204593)



This specification and all information contained herein is the confidential and exclusive property of BrassCraft Manufacturing, and shall not be disclosed to others without the written consent of BrassCraft. This specification must be returned to BrassCraft if requested.

**BrassCraft®**