

For Residential and Commercial Applications

Job Name		Engineer / Architect	
Job Location		Wholesaler	
Submittal Date		Contractor	

CT2-66 Series Female Captive Nut x Compression Tee

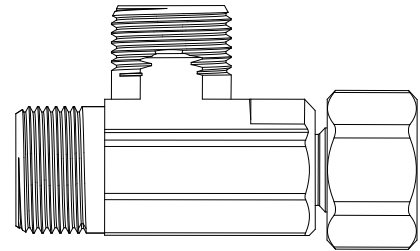
Use: For use with instrumentation, hydraulic and pneumatic systems. Designed for use with aluminum, copper and plastic tubing. Not intended for use with steel tubing

Design Features:

- **Little to no tube preparation.** Compression fittings do not require flaring, soldering or other types of tube preparation
- **Compliant** to California, Vermont and Maryland "low-lead" requirements

Operating Specifications:

Temperature:	40°to 180°F at maximum operating pressures
Working Pressure:	See chart below
Vibration:	Fair vibration resistance



MATERIAL SPECIFICATIONS

Fitting Body	Compliant brass
Barb	Compliant brass
Flat Washer	Nitrile
Nut	C36000 brass

PART DIMENSIONS (Inches)

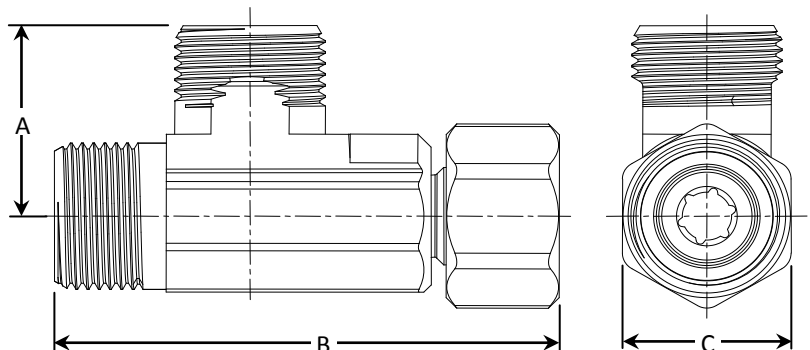
Model	DIM. A	DIM. B	HEX. C
CT2-666X	.72	1.87	5/8
CT2-664X	.62	1.87	5/8

Part Listing:

- ☐ CT2-664X B 3/8" O.D. Female Captive Nut x 3/8" O.D. Compression x 1/4" O.D. Compression, bulk
- ☐ CT2-664X P 3/8" O.D. Female Captive Nut x 3/8" O.D. Compression x 1/4" O.D. Compression, bagged
- ☐ CT2-666X B 3/8" O.D. Female Captive Nut x 3/8" O.D. Compression x 3/8" O.D. Compression Tee, bulk
- ☐ CT2-666X D 3/8" O.D. Female Captive Nut x 3/8" O.D. Compression x 3/8" O.D. Compression Tee, carded
- ☐ CT2-666X P 3/8" O.D. Female Captive Nut x 3/8" O.D. Compression x 3/8" O.D. Compression Tee, bagged

Listings & Certifications:

- Compliant product CSA approved to California Health & Safety Code 116875, Vermont Bill S.152 and Maryland House Bill 372 (Project # 234795)



This specification and all information contained herein is the confidential and exclusive property of BrassCraft Manufacturing, and shall not be disclosed to others without the written consent of BrassCraft. This specification must be returned to BrassCraft if requested.

BrassCraft®