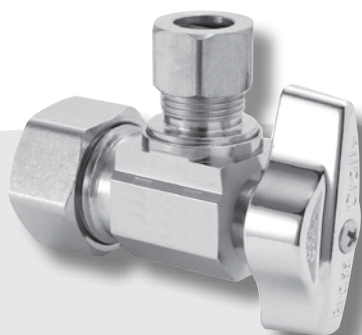


BrassCraft Stops

Made in the USA, BrassCraft stops, machined from solid brass, offer the highest quality and most reliable connection. The finished stops are offered for a variety of connections including Compression, Sweat, PEX, CPVC and PushConnect. Options include metal stems, lock shields, dual outlets, dual shut-offs, stuffing boxes and handles.

BrassCraft stops are designed for longevity, consistently exceed industry standards, are competitively priced and delivered with exceptional service. As the leading manufacturer of water stops for over 65 years, BrassCraft has the stop to meet your needs.

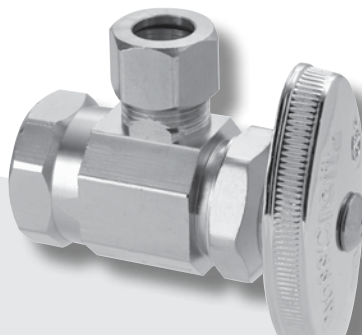
KT Series



G2 Series



Multi-Turn



KT Series 1/4 Turn Ball Stops

KT Series 1/4 turn ball stops offer superior performance and quality advantages you expect from BrassCraft. Available in angle and straight bodies for compression, copper sweat, iron pipe, CPVC and PEX inlet connections.

- 1/4 Turn On-Off for easy, smooth operation
- High performance PTFE seats provide corrosion resistance, watertight seal and ease of use
- Precision-machined brass ball resists corrosion; ensures ease of operation
- Chrome plated brass body and zinc die cast handle for strength, corrosion resistance and fine appearance
- Blow-out-proof plated stem with double o-rings for safe, reliable operation
- 100% leak tested to ensure reliability
- IAPMO and CSA Approved

G2 Series 1/4 Turn Stops

BrassCraft's G2 1/4 turn stops combine 1/4-turn technology, durable construction and proven performance at an affordable price. Available in straight and angle styles with a full range of inlet options.

- Patented, one-piece mechanism provides years of smooth, 1/4-turn operation
- Made from machined brass rod for strength, durability, and lasting appearance
- 100% leak tested to ensure reliable, leak-free operation.
- IAPMO and CSA Approved

Multi-Turn Stops

BrassCraft multi-turn stops have set the bar for quality, reliability and proven performance for over 65 years. These stops provide the widest choice of configurations.

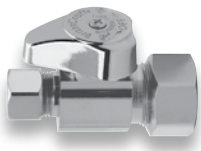
- One-piece brass body
- Water flow controlled by stem; removable handles
- Washers keep water flowing while preventing contaminants from entering water flow
- Repairable in the field
- IAPMO and CSA Approved



Part Numbering System

G2 1/4 Turn Stops

Example:



G	2	C	R	1	9	P	X	C	1
Stop Style		Stop Type		Outlet	Inlet	Option		Finish	Packaging
1/4 Turn Stop		Compression Inlet		3/8" OD (1/4" Nom)	1/2" Nominal Copper, Angle	Compression PEX Inlet		Chrome	Individually Boxed

G	2
Stop Style	

Stop Style

G2 1/4 Turn Stop

C	R
Stop Type	

Stop Type

CR	Compression Inlet	BRPX	Barbed PEX Inlet
PR	CPVC Inlet	CEPX	Cold Expansion PEX Inlet
R	Iron Pipe Inlet	33	Slip-Joint Outlet
PC	PushConnect Inlet		

1
Outlet

Outlet Size

0	1/4" OD	3	1/2" OD (3/8" Nom)
1	3/8" OD (1/4" Nom)	4	5/8" OD (1/2" Nom)

9
Inlet

Inlet Size & Style

0	3/8" Female Iron Pipe, Straight	For Slip-Joint Outlets:	01	1/2" FIP Inlet, Angle
1	3/8" OD Compression (1/4" Nom)		05	1/2" FIP Inlet, Straight
2	1/2" Female Iron Pipe, Straight		41	1/2" Nom Comp Inlet, Angle
4	1/2" Nominal Copper, Straight		45	1/2" Nom Comp Inlet, Straight
5	3/8" Female Iron Pipe, Angle			
7	1/2" Female Iron Pipe, Angle			
9	1/2" Nominal Copper, Angle			

P	X
Option (Modifier)	

Option

PX Compression PEX Inlet (w/Tube Insert)

C
Finish

Finish

C Chrome Plated, Trayed R Chrome Plated, Trayed

1
Packaging (Modifier)

Packaging

1 Individually Boxed (These stops are highlighted in **bold print** in this catalog).

PART NO.	UPC	INLET X OUTLET	FINISH	QTY.	LBS.
Barbed Inlet Stops For PEX Piping – Straight					
G2BRPX14 C	026613122922	1/2" Nom Crimp Barb x 3/8" OD Comp (Pictured)	Chrome	60	13
G2BRPX14 R	026613122939	1/2" Nom Crimp Barb x 3/8" OD Comp (Pictured)	Rough	60	13
G2BRPX44 R	026613123066	1/2" Nom Crimp Barb x 1/2" Nom Barb	Rough	60	12



Cold Expansion Inlet Stop For PEX Piping – Angle

G2CEPX19 C	026613133997	1/2" Nom Cold Expansion Barb x 3/8" OD Comp	Chrome	60	15.5
------------	--------------	---	--------	----	------



Cold Expansion Inlet Stop For PEX Piping – Straight

G2CEPX14 C	026613133980	1/2" Nom Cold Expansion Barb x 3/8" OD Comp	Chrome	60	14
------------	--------------	---	--------	----	----



PushConnect Stops – Angle

G2PC19 C	026613134772	1/2" Nom PushConnect x 3/8" OD Comp	Chrome	60	13
G2PC19 C1	026613134345	1/2" Nom PushConnect x 3/8" OD Comp	Chrome	20	7
G2PC09 C	026613135625	1/2" Nom PushConnect x 1/4" OD Comp	Chrome	60	18



PushConnect Stops – Straight

G2PC14 C	026613134789	1/2" Nom PushConnect x 3/8" OD Comp	Chrome	60	13
G2PC14 C1	026613134338	1/2" Nom PushConnect x 3/8" OD Comp	Chrome	20	7



*Viton® is a registered trademark of DuPont Dow Elastomers, L.L.C.
See **pages 100 - 102** for material specifications.