

Fill and flush cart

© Copyright 2016 Caleffi

NA255

Function

The fill and flush pump cart is portable, pre-assembled and leak-tested for a safe, quick and clean way to fill and flush solar, geothermal and hydronic heating systems.

The fill and flush cart was designed for easy maneuvering, with 10 inch tires and back arm bars. This cart will maneuver any stair or landscape and ease the process loading into a van or truck. The cart features a ½ HP (120 V AC) pump, providing maximum pump pressure to 55 psi, providing the power needed to purge all of the air from a hydronic system.

Product Range NA255



NA25510 Fill and flush cart

Technical Specifications

Materials

Cart frame: welded steel chasis, powdercoat frame
 Tank: polyethylene
 Filter: stainless steel
 Tires: 10 inch rubber

Performance

Suitable fluids: water, glycol and hydronic cleaning fluids
 Max. tank medium temperature: 140° F (60° C)

Connections:

Isolating ball valves: ¾ inch garden hose thread
 Transfer hoses: 8 feet length with ¾ inch GHT (2 each)
 Drain: ¾ inch garden hose thread

Pump (Grundfos model CM1-3)

Materials

Body: cast iron, stainless steel
 Impeller: stainless steel

Performance

Pump delivery flow: 1-15 gpm (.06 - 0.95 l/s)
 Max. pump feet of head: 125 ft (55 psi, 380 kPa)
 Max. pump pressure: 0 - 55 psi (0 - 380 kPa)
 Pump power: ½ hp
 Pump rating: 7.6 A @ 115 VAC

Connections:

In/out: ¾ inch: garden hose thread



SAFETY INSTRUCTION / CONSIGNE DE SÉCURITÉ

This safety alert symbol will be used in this manual to draw attention to safety related **instructions**. **When used, the safety alert symbol means ATTENTION! BECOME ALERT! YOUR SAFETY IS INVOLVED! FAILURE TO FOLLOW THESE INSTRUCTIONS MAY RESULT IN A SAFETY HAZARD.**

Ce symbole d'avertissement servira dans ce manuel à attirer l'attention sur la sécurité concernant instructions. Lorsqu'il est utilisé, ce symbole signifie **ATTENTION ! DEVEZ ALERTE ! VOTRE SÉCURITÉ EST EN JEU ! NE PAS SUIVRE CES INSTRUCTIONS PEUT PROVOQUER UN RISQUE DE SECURITE.**



CAUTION: Before working on the pump, make sure to disconnect from the power supply. Pump may become hot after extended use which could lead to burn.

ATTENTION: Avant de travailler sur la pompe, veillez à débrancher de l'alimentation. La pompe peut devenir chaud après une utilisation prolongée, ce qui pourrait conduire à graver.



CAUTION: Always operate Caleffi Fill and Flush cart on level ground to ensure proper safety. Dry running of pump for more than one minute can lead to material damage to product.

ATTENTION: Toujours utiliser Caleffi Fill et panier Flush au niveau du sol pour assurer la sécurité adéquate. Le fonctionnement à sec de la pompe pendant plus d'une minute peut entraîner des dommages matériels au produit.



CAUTION: Make sure that all the connecting pipework is water tight. Not doing so could lead to environment damage and/or personal injury.

ATTENTION: Assurez-vous que toute la tuyauterie de raccordement est étanche à l'eau. Ne pas le faire pourrait conduire à des dommages environnement et / ou des blessures.



CAUTION: Fluid temperatures higher than 100°F (38°F) can be dangerous. During the operation of the Fill and Flush cart, take the necessary precautions to ensure that such temperatures do not endanger people.

ATTENTION: Les températures des fluides supérieures à 100°F (38°C) peut être dangereuse. Pendant le fonctionnement du remplissage et panier Flush, prendre les précautions nécessaires pour veiller à ce que de telles températures ne mettent pas en danger les personnes.



CAUTION: When done with use of product, make sure to store in a dry, clean, climate controlled area. During extended down time, make sure to clean pump prior to avoid damages to the impeller.

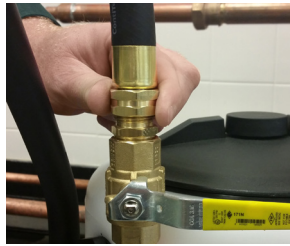
ATTENTION: Lorsque vous avez terminé avec l'utilisation du produit, assurez-vous de stocker dans un endroit sec, propre, climat contrôlé. Pendant prolongé le temps d'arrêt, assurez-vous de nettoyer la pompe avant d'éviter des dommages à la roue.

**LEAVE THIS MANUAL FOR THE USER
LAISSEZ CE MANUEL AVEC L'UTILISATEUR**

Instructions for use



1) Connect hose to fill and purge valve inlet.



2) Connect opposite end of hose to pump cart supply at ball valve.



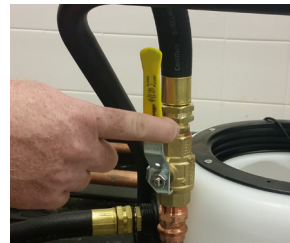
3) Connect second hose to fill and purge valve outlet.



4) Connect opposite end of second hose to pump cart return at bulkhead fitting.



5) Remove lid and add your fluid to the 10 gallon tank.



6) Open ball valve on pump cart supply.



7) Set system fill and purge valve to allow flow in and out of pump cart.



8) Connect pump cart to 120 VAC power supply.



9) Turn power on to pump cart.



10) Let fluid circulate to fill system and purge air, check for air entering tank at bottom of return dip tube, maintain fluid levels.

Maintenance and preventative care

After use of Caleffi Fill and Flush Cart:

1. During operation, running pump without fluid could lead to significant damage, so be sure not to operate pump without fluid.
2. Unscrew dirt filter and remove any dirt of buildup remaining.
3. Leave residual glycol fluid inside the pump and tank.

4. make sure to collect any excess fluid and dispose of in a safe and secure manner.

5. Store hoses inside tank after use.

6. Store in controlled climate with lid properly sealed on to avoid unnecessary wear and tear, and to control cleanliness of the glycol tank.

7. Always store the pump cart with some inhibited glycol to prevent freezing. This also protects the pump body from corrosion.

Troubleshooting

Under normal operating conditions, the Caleffi Fill and Flush Cart will provide a very high level of performance. However, in some circumstances, where the recommended maintenance plan is not followed, the following problems may arise.

Symptom	Cause	Corrective action
No flow of water from cart.	a) In-line filters causing blockage. b) Insufficient supply pressures. c) Debris obstructing valve operation.	a) Clean filters. b) Restore inlet supplies. c) Clean debris or scale from valve.
Pump is on but will not move fluid and makes loud sound.	a) There is air in the pump.	a) Check fluid level in the tank, fill several inches above suction screen.



Caleffi North America, Inc.
3883 West Milwaukee Road
Milwaukee, WI 53208
T: 414.238.2360 F: 414.238.2366