

Mixing Faucets – Deckmount

TECK®
COMMERCIAL

DELTA®

FEATURES:

- Fits a maximum 1-1/4" diameter holes
(7/8" diameter holes recommended)
- TECK® rigid/swivel gooseneck
 - unique design permits field installation as a rigid or swivel gooseneck
 - heavy-duty gooseneck made from seamless brass pipe
- All brass body with vandal resistant dual shanks to prevent damage to counter top
- Raised lockwasher to provide positive gripping during installation
- TECK® Lab structure
- C.P. renewable brass seat
- Two handle variations
 - 2 arm TECK® Lab handle
 - ADA compliant 2-3/4" lever blade handle
- Two vacuum breaker variations
 - Angled atmospheric vacuum breaker. Brass construction with durable silicone disk allowing high heat and water hammer shock resistance.
 - Dual check in-line vacuum breaker resulting in above average flow rate and consequently lower pressure loss

2 ARM LAB HANDLE PRODUCT

With Gooseneck Spout

❑ W6700

Deckmount mixing faucet with rigid/swivel gooseneck complete with 1/4" I.D. 10 serration nozzle, dual shanks, locknuts, lockwashers, 2 arm lab handles, TECK® Lab structures, C.P. renewable brass seats, 1/4" NPT tailpiece and coupling nuts

❑ W6700-9

As W6700, but with in-line dual check vacuum breaker and nozzle

With Angle Vacuum Breaker Spout

❑ W6700-10

Deckmount mixing faucet with rigid/swivel angle vacuum breaker spout, complete with 1/4" I.D. 10 serration nozzle, dual shanks, locknuts, lockwashers, 2 arm lab handles, TECK® Lab structures, C.P. renewable brass seats, 1/4" NPT tailpiece and coupling nuts

W6700-9



ADA COMPLIANT

2-3/4" LEVER BLADE HANDLE PRODUCT

With Gooseneck Spout

❑ W6700-C

Deckmount mixing faucet with rigid/swivel gooseneck complete with 1/4" I.D. 10 serration nozzle, dual shanks, locknuts, lockwashers, ADA compliant 2-3/4" lever blade handles, TECK® Lab structures, C.P. renewable brass seats, 1/4" NPT tailpiece and coupling nuts

❑ W6700-9-C

As W6700-C, but with in-line dual check vacuum breaker and nozzle

With Angle Vacuum Breaker Spout

❑ W6700-10-C

Deckmount mixing faucet with rigid/swivel angle vacuum breaker spout, complete with 1/4" I.D. 10 serration nozzle, dual shanks, locknuts, lockwashers, ADA compliant 2-3/4" lever blade handles, TECK® Lab structures, C.P. renewable brass seats, 1/4" NPT tailpiece and coupling nuts

MODEL NUMBER EXAMPLE:








Configurations vary, see below for availability.

W 6 7 0 0 - 9 - R 7 C

Body/Turret
0 = 2.75" centers

Outlet
Blank = serrated nozzle
9 = In-line vacuum breaker and serrated nozzle
10 = Angle vacuum breaker and serrated nozzle

C = 2.75" lever blade handle
R* = Optional gooseneck spout dimensions:
R7 = 9" long, 15.5" high

AVAILABLE MODELS 		VARIATION/OUTLET		
		Gooseneck Spout with Serrated Nozzle 6" long, 15" high 	Gooseneck Spout with In-line Vacuum Breaker and Serrated Nozzle 6" long, 15" high 	Gooseneck Spout with Angle Vacuum Breaker and Serrated Nozzle 6" long, 15" high 
HANDLE	2 Arm Laboratory Handle 	W6700	W6700-9 W6700-9-R7	W6700-10
	Lever Blade Handle 2.75" (70 mm)  	W6700-C	W6700-9-C W6700-9-R7C	W6700-10-C

Not for potable water

Refer to www.specselect.com for individual models.

Note: Use this page front and back as a product submittal sheet.

Delta reserves the right (1) to make changes in specifications and materials, and (2) to change or discontinue models, both without notice or obligation. Dimensions are for reference only. See current full-line price book or www.specselect.com for finish options and product availability.

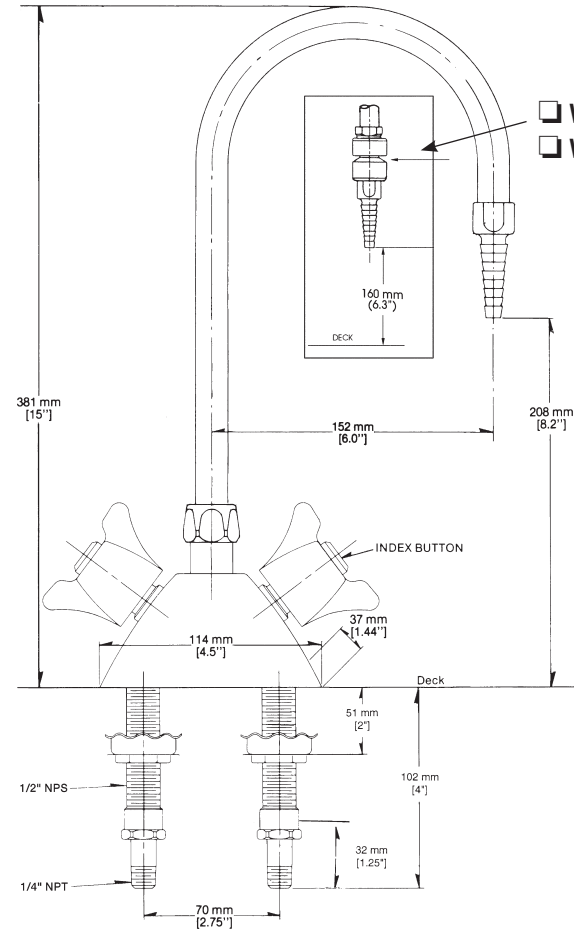
DSP-W6700 Rev. F

Mixing Faucets – Deckmount

TECK[®]
COMMERCIAL

DELTA

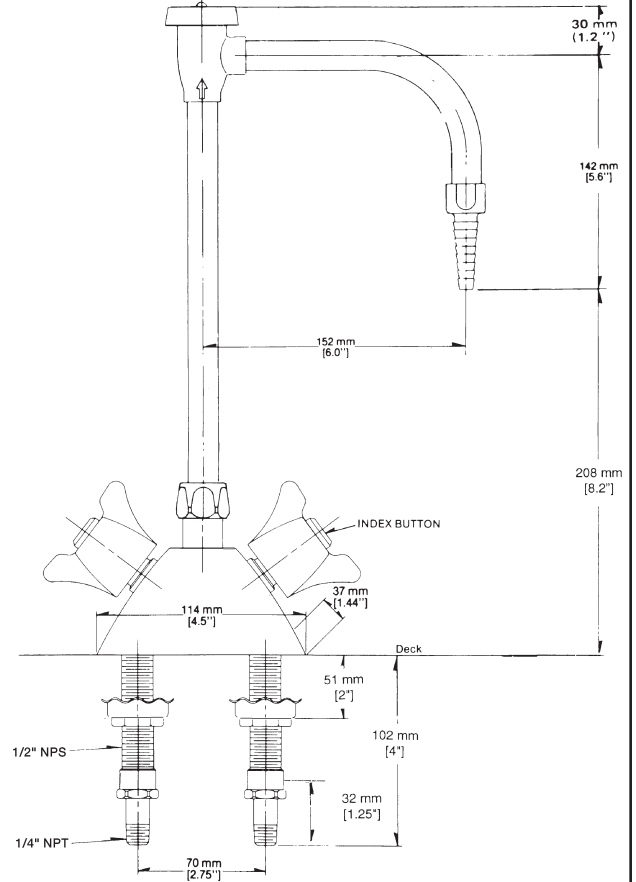
- ❑ **W6700** (2 Arm – shown)
- ❑ **W6700-C** (Lever)



- ❑ **W6700-9** (2 Arm)
- ❑ **W6700-9-C** (Lever)

Maximum
1 1/4" Diameter
Shank Holes,
7/8" Diameter
Recommended

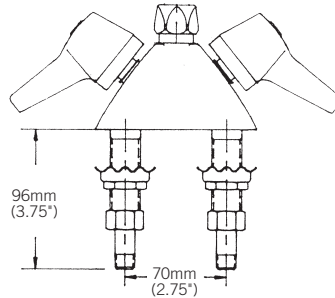
- ❑ **W6700-10** (2 Arm – shown)
- ❑ **W6700-10-C** (Lever)



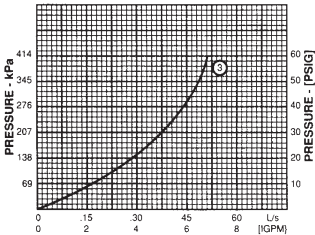
**2-3/4" Lever Blade
Handle Product**



Not for potable water.



WATER FLOW



FOR:
3 - Compression valves with 6.4mm (1/4") nozzles

FOR OPTIONAL RIGID/SWIVEL SPOUTS

See **DSP-LABSPOpt** for detailed specification.

Approvals and Standards Met:

CSA certified.
Complies to ASME A112.18.1/CSA B125.1

Indicates compliance to ICC/ANSI A117.1
when 2-3/4" lever blade handle is used

In-line VB tested and approved in conformance with ASSE 1035
"Laboratory Faucet Vacuum Breakers".

CSA certified to B64.7

Angle VB tested and approved in conformance with ASSE 1001
and CSA B64.1.1

Note: Measurements may vary $\pm 6\text{mm}$ (0.25")

Refer to www.specselect.com for individual models.

Note: Use this page front and back as a product submittal sheet.

DSP-W6700 Rev. F

Delta reserves the right (1) to make changes in specifications and materials, and (2) to change or discontinue models, both without notice or obligation. Dimensions are for reference only. See current full-line price book or www.specselect.com for finish options and product availability.