

Mixing Faucets – Single Shank

TECK®
COMMERCIAL

DELTA®

FEATURES:

- TECK® rigid/swivel gooseneck
 - unique design permits field installation as a rigid or swivel gooseneck
 - heavy-duty gooseneck made from seamless brass pipe
- All brass body with vandal resistant anti-rotation locking pins to prevent damage to counter top (can be removed in field if not required)
- TECK® Lab structures
- C.P. renewable brass seats
- 2 arm TECK® lab handles standard
- Two vacuum breaker variations
 - Angled atmospheric vacuum breaker. Brass construction with durable silicone disk allowing high heat and water hammer shock resistance.
 - Dual check in-line vacuum breaker resulting in an above average flow rate and consequently lower pressure loss

2 ARM LAB HANDLE PRODUCT

With Gooseneck Spout

❑ W6760

Single Shank mixing faucet with rigid/swivel gooseneck complete with 1/4" I.D. 10 serration nozzle, locknuts, 2 arm lab handles, TECK® Lab structures, C.P. renewable brass seats, flexible hoses, 3/8" compression connection

❑ W6760-9

As W6760, but with in-line dual check vacuum breaker and nozzle

With Angle Vacuum Breaker Spout

❑ W6760-10

Single Shank mixing faucet with rigid/swivel vacuum breaker spout, complete with 1/4" I.D. 10 serration nozzle, locknuts, 2 arm lab handles, TECK® Lab structures, C.P. renewable brass seats, flexible hoses, 3/8" compression connection

W6760-9



MODEL NUMBER EXAMPLE:




Configurations vary, see below for availability.

W 6 7 6 0 - 9 - R 7

Body/Turret
6 = Single shank

Outlet
Blank = serrated nozzle
9 = In-line vacuum breaker and serrated nozzle
10 = Angle vacuum breaker and serrated nozzle

R* = Optional gooseneck spout dimensions:
R4 = 6" long, 13.9" high
R7 = 9" long, 16.2" high

AVAILABLE MODELS		VARIATION/OUTLET		
HANDLE	2 Arm Laboratory Handle	Gooseneck Spout with Serrated Nozzle 6" long, 15.5" high 	Gooseneck Spout with In-line Vacuum Breaker and Serrated Nozzle 6" long, 15.5" high 	Gooseneck Spout with Angle Vacuum Breaker and Serrated Nozzle 6" long, 15.5" high 
		W6760	W6760-9 W6760-9-R4 W6760-9-R7	W6760-10

Not for potable water

Refer to www.specselect.com for individual models.

Note: Use this page front and back as a product submittal sheet.

Delta reserves the right (1) to make changes in specifications and materials, and (2) to change or discontinue models, both without notice or obligation. Dimensions are for reference only. See current full-line price book or www.specselect.com for finish options and product availability.

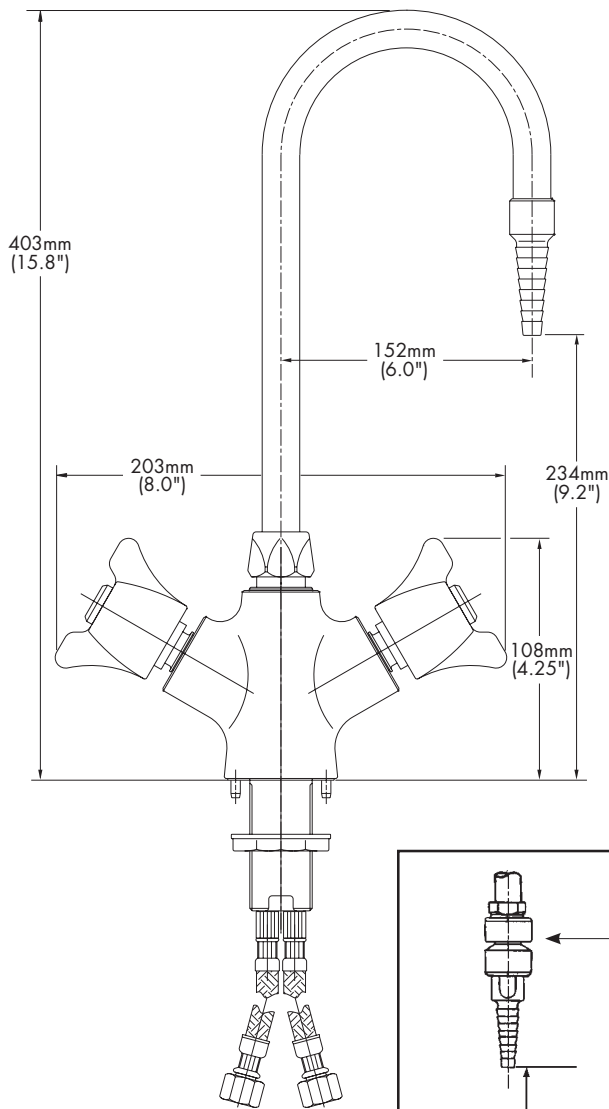
DSP-W6760 Rev. E

Mixing Faucets – Single Shank

TECK[®]
COMMERCIAL

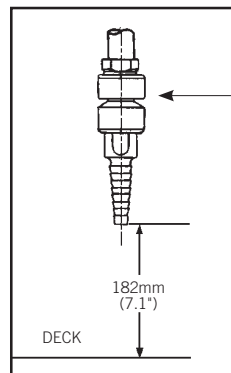
DELTA

W6760

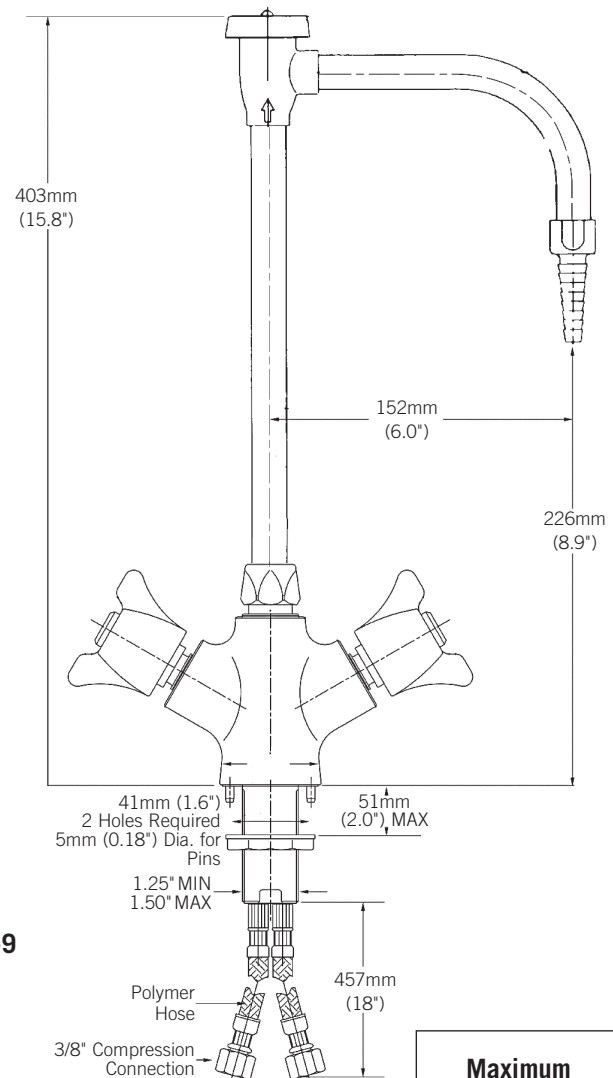


Not for potable water.

W6760-9

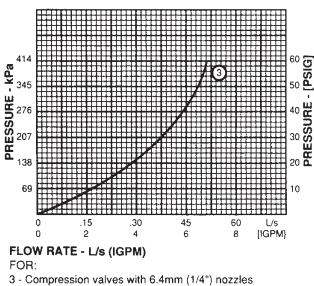


W6760-10



Maximum
1.5" Diameter
Hole,
1.25" Diameter
Recommended

WATER FLOW



FOR OPTIONAL RIGID/SWIVEL SPOUTS

See **DSP-LABSP0pt** for detailed specification.

Approvals and Standards Met:

CSA certified.
Complies to ASME A112.18.1/CSA B125.1

In-line VB tested and approved in conformance with ASSE 1035 "Laboratory Faucet Vacuum Breakers".

CSA certified to B64.7

Angle VB tested and approved in conformance with ASSE 1001 and CSA B64.1.1

Note: Measurements may vary \pm 6mm (0.25")

Refer to www.specselect.com for individual models.

Note: Use this page front and back as a product submittal sheet.

DSP-W6760 Rev. E

Delta reserves the right (1) to make changes in specifications and materials, and (2) to change or discontinue models, both without notice or obligation. Dimensions are for reference only. See current full-line price book or www.specselect.com for finish options and product availability.