

# Rigid/Swivel Spouts

**TECK®**  
COMMERCIAL

**DELTA®**

## W6890

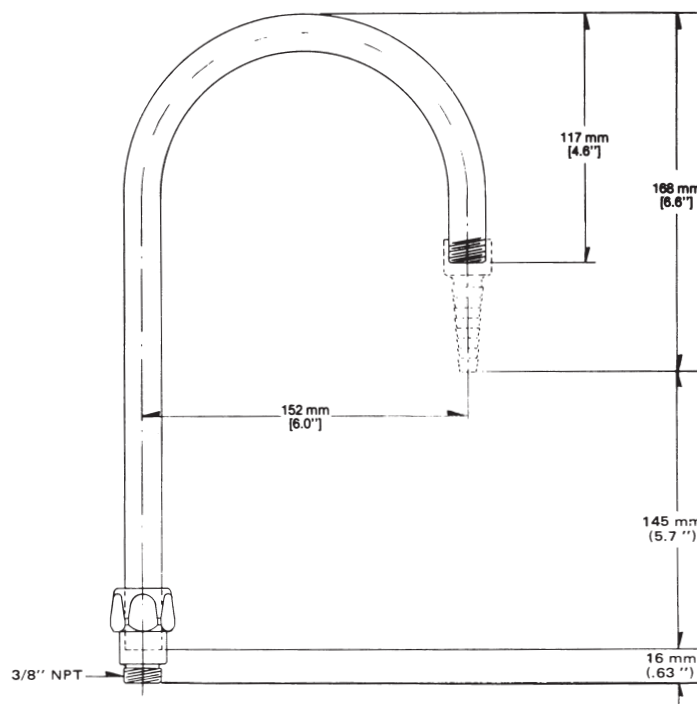
C.P. rigid/swivel gooseneck, 3/8" M.I.P. inlet connection, 3/8" M.I.P. outlet connection. Includes GN spout adaptor. Outlet must be ordered separately

## W6850

C.P. angle vacuum breaker spout assembly featuring Teck® rigid/swivel connection and 6.4 mm (1/4") nozzle. Includes GN spout adaptor. Faucets with W6850 spout can be specified using "-10" after base faucet number (i.e., W6600 becomes W6600-10)



☐ **W6890**  
Rigid/Swivel Gooseneck Spout

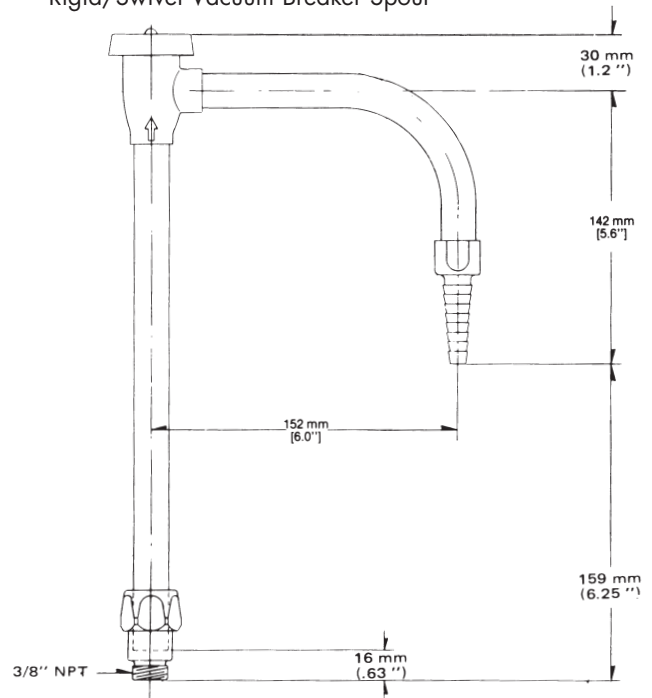


### Optional Sizes:

#### •W6890 style

- ☐ W6890-1 4.5" Radius (R2)
- ☐ W6890-2 6" Radius (R4)
- ☐ W6890 6" Radius (R5)
- ☐ W6890-4 6" Radius (R6)
- ☐ W6890-5 9" Radius (R7)

☐ **W6850**  
Rigid/Swivel Vacuum Breaker Spout



### Optional Sizes:

#### •W6850 style

- ☐ W6850 6" Radius (R23)

Note: Measurements may vary  $\pm 6\text{mm}$  (0.25")

Refer to [www.specselect.com](http://www.specselect.com) for individual models.

Note: Use this page front and back as a product submittal sheet.