

# INSTANT HOT WATER

## THE CONVENIENCE THAT SELLS ITSELF

*It's 2020. Waiting for hot water is a thing of the past.*

End the waiting and the waste – give your customers the convenience and savings of instant hot water with affordable, quality Grundfos hot water recirculation pumps.

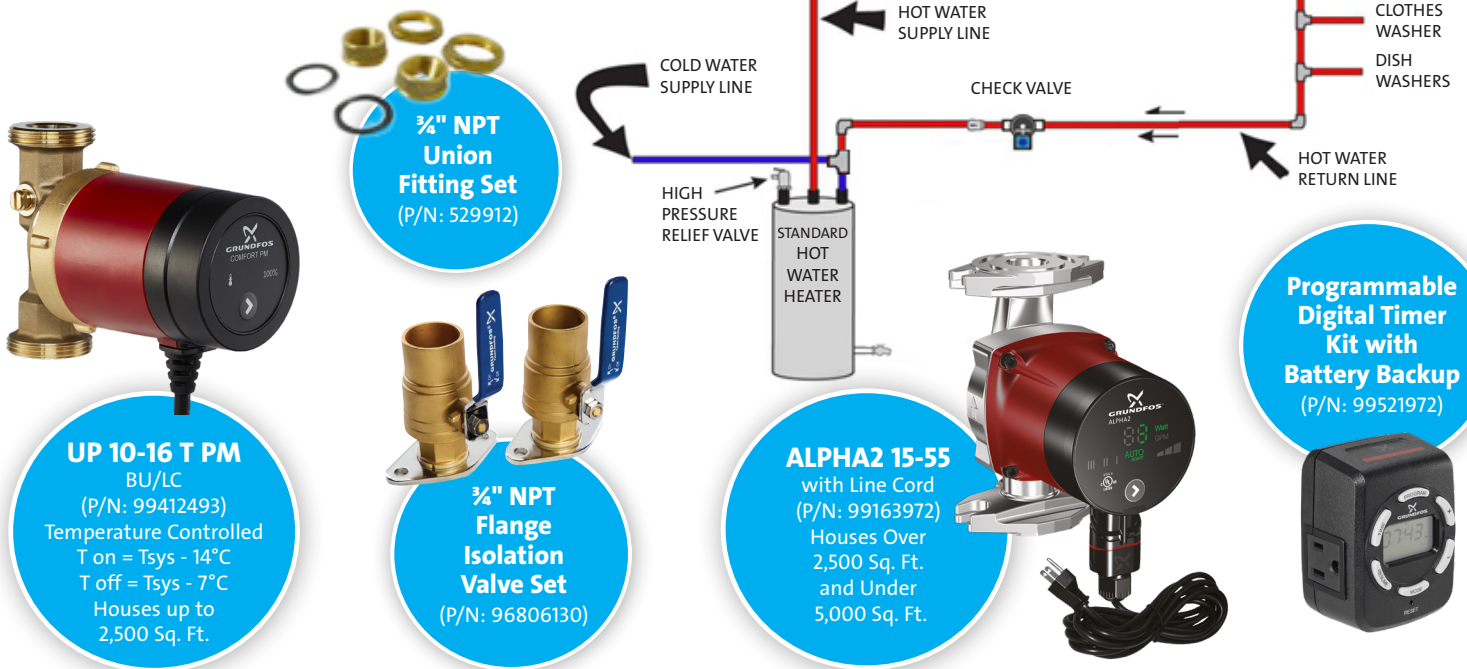
## Why? Comfort and Convenience. No Waiting for Hot Water.



Water conserving fittings can make waits longer. Dishwashers and washing machines require instant hot water to operate effectively.

### For System with Dedicated Return Line

Comfort Pump and ALPHA2



**3/4" NPT Union Fitting Set**  
(P/N: 529912)



**UP 10-16 T PM**  
BU/LC  
(P/N: 99412493)  
Temperature Controlled  
T on = Tsys - 14°C  
T off = Tsys - 7°C  
Houses up to 2,500 Sq. Ft.

**3/4" NPT Flange Isolation Valve Set**  
(P/N: 96806130)

**ALPHA2 15-55**  
with Line Cord  
(P/N: 99163972)  
Houses Over 2,500 Sq. Ft. and Under 5,000 Sq. Ft.



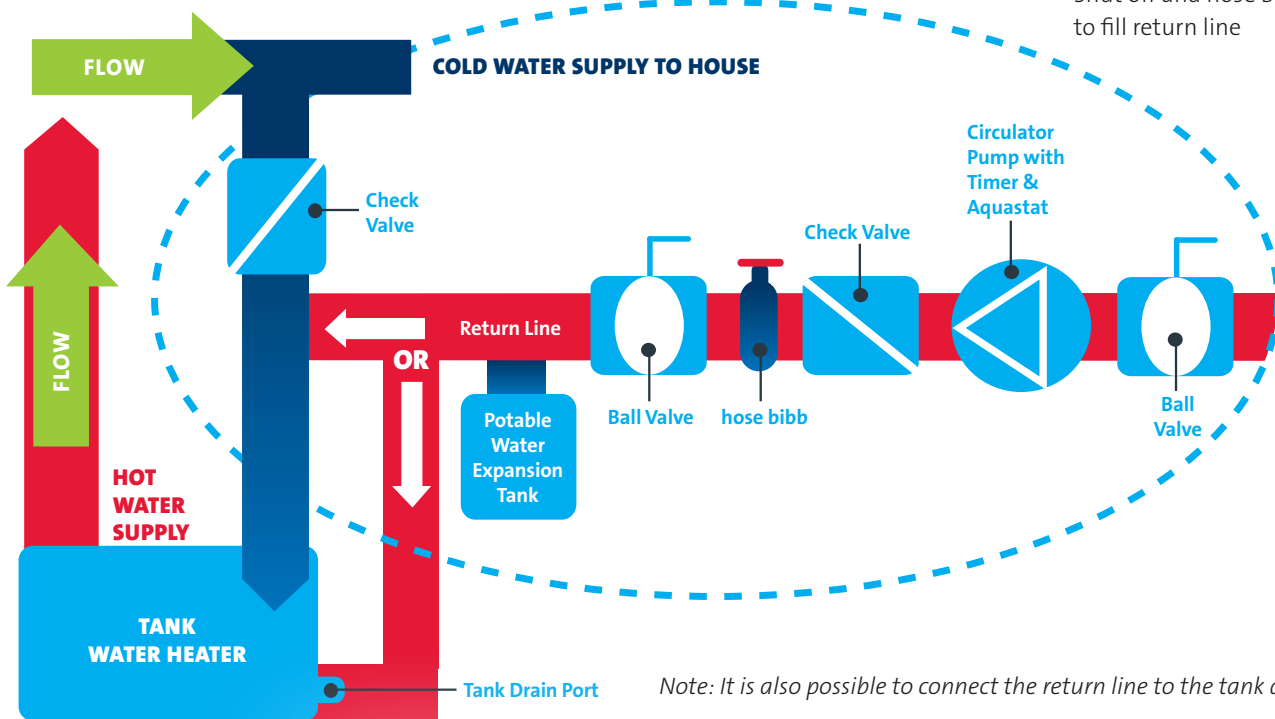
**Programmable Digital Timer Kit with Battery Backup**  
(P/N: 99521972)



## Piping Layout for Standard Water Heater

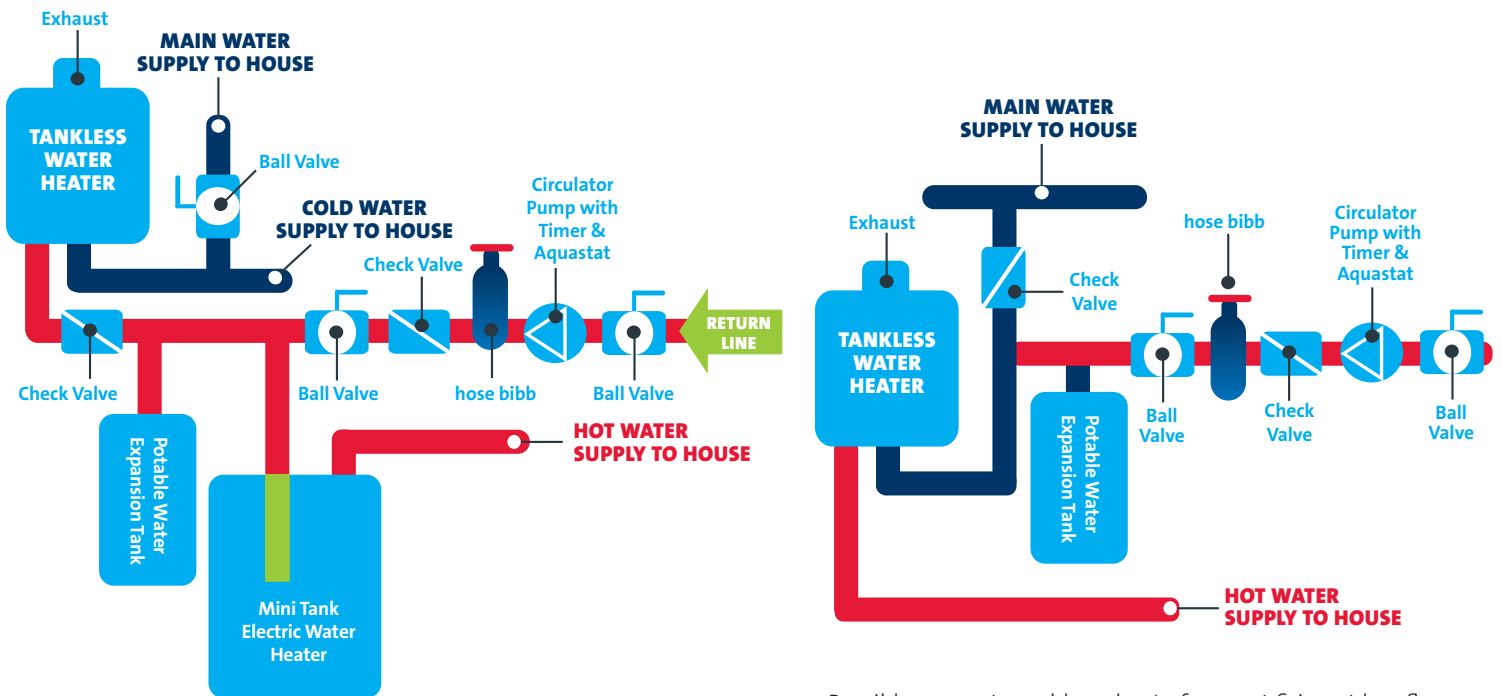
Return line connected to cold supply

- Check valve required to prevent cold water migration to DHW
- Shut off and hose bib required to fill return line



Note: It is also possible to connect the return line to the tank drain port.

## Tankless Water Heater with Return Line\*



Not a warranty problem. Mini electric water heater tanks minimize cold water slugs.

Possible warranty problem due to frequent firing at low flow. Determine pressure drop across tankless heater for pump sizing. Please consult heater manufacturer.

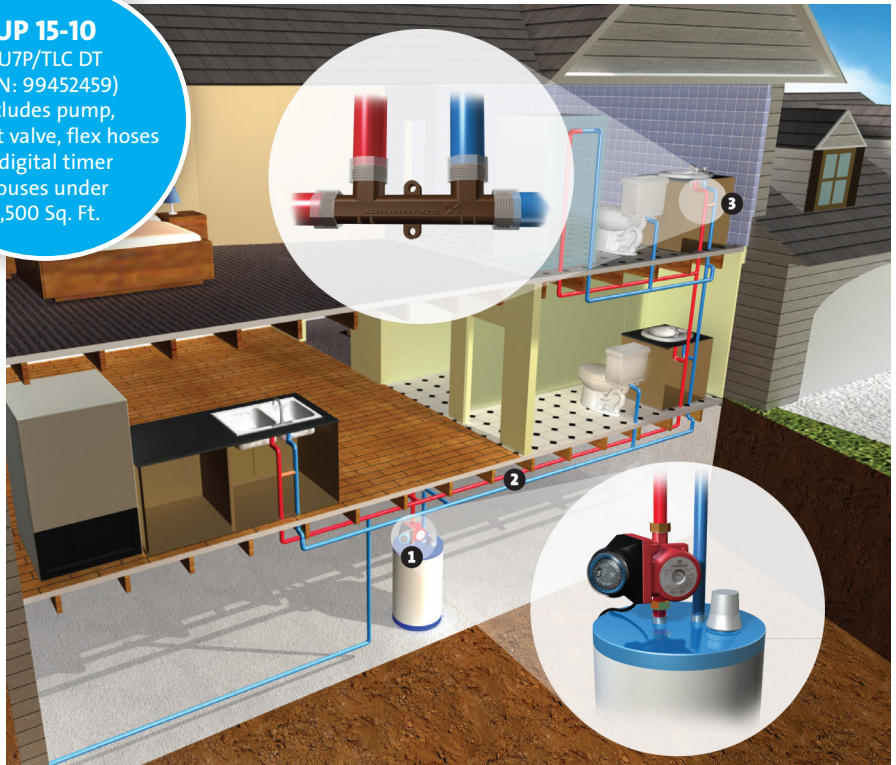
1. \*Please consult water heater manufacturer for flow and warranty requirements.
2. \*Some tankless water heaters already have a circulator and buffer tank installed internally. Please consult with a tankless manufacturer for specifications.

## For System with No Return Line

Comfort System



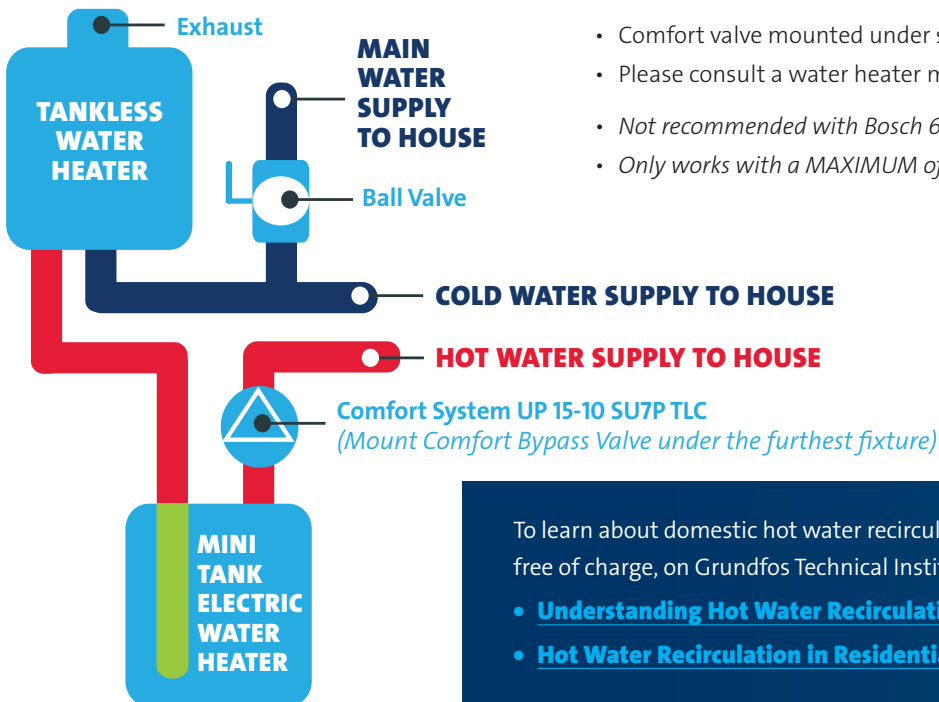
**UP 15-10**  
SU7P/TLC DT  
(P/N: 99452459)  
Includes pump,  
comfort valve, flex hoses  
& digital timer  
Houses under  
2,500 Sq. Ft.



- A second valve may be required when line is not one continuous loop.
- A maximum of five valves can be used per pump.

## Tankless Water Heater without Return Line

Comfort System Installed on a Tankless Heater



- Comfort valve mounted under sink furthest from water heater
- Please consult a water heater manufacturer for flow and warranty requirements
- *Not recommended with Bosch 635 Series*
- *Only works with a MAXIMUM of two valves due to combined flow of .5 gpm.*

To learn about domestic hot water recirculation, the following courses are offered, free of charge, on Grundfos Technical Institute. [Click the course names below to enroll.](#)

- [Understanding Hot Water Recirculation](#)
- [Hot Water Recirculation in Residential Systems with Tankless Water Heaters](#)

GRUNDFOS **TECHNICAL INSTITUTE**

HOT WATER RECIRCULATION CROSS REFERENCE 2020							
Grundfos Union	Grundfos ECM Flanged	Grundfos Flanged	Grundfos	TACO	Xylem	ARMSTRONG	Wilo
<b>HOUSES WITH A DEDICATED RETURN LINE</b>							
UP 10-16 TPMBU (Integrated Aquastat and Line Cord) (P/N: 99412493) <b>List Price: \$410</b>			UP 10-16 PM B5/LC UP 10-16 PM B5/LC UP 10-16 T PM BNS/LC UP 10-16 A PM B5/LC UP 10-16 A PM BNS/LC UP 10-16 A PM BU/LC UP 15-10B7 UPI5-10B5		SM-303 Series		Star Z-15 BNS Star Z-15 B55 Star Z-15 B57
UPS 15-35 SUC/TLC (Timer and Line Cord Included) (P/N: 99452478) <b>List Price: \$501.00</b>	ALPHA2 15-55 SFC/LC (Line Cord Included) (P/N: 99163972) <b>List Price: \$693.00</b>	UPS 15-35 SFC (P/N: 59896772) <b>List Price: \$501.00</b>	UP 15-10B5 UP 15-10B7 UP 15-18B5 UP 15-18B7 UP 15-29SULC	003 005 006 007	NBF-12 SSF-12 NBF-9	Astro 20 Astro 25 Astro 30 2-Speed	Star 21 ZF
UPS 15-55 SUC/TLC (Timer and Line Cord Included) (P/N: 99452479) <b>List Price: \$572.00</b>	ALPHA2 15-55 SFC/LC (Line Cord Included) (P/N: 99163972) <b>List Price: \$693.00</b>	UPS 15-55 SFC (P/N: 59896773) <b>List Price: \$572.00</b>	UP 15-42B5 UP 15-42B7	008 00R-BF6-IFC	NBF-22 SSF-22	Astro 30 Astro 50 1-Speed	Star 21 ZF
<b>HOUSES WITHOUT A DEDICATED RETURN LINE</b>							
UP 15-10 SU7P/TLC (Timer, Line Cord, Valve and Flex Hoses Included) (P/N: 99452459) <b>List Price: \$539.00</b>				HLS-2	E1	Astro Express 2 1-Speed	

RECOMMENDED HOT WATER RECIRCULATION ACCESSORIES 2020					
Pump	Line Cord/Conduit	Timer	Fitting	Under Sink Valve	Flex Hoses
UP 10-16 TPMBU (Integrated Aquastat and Line Cord) (P/N: 99412493) <b>List Price: \$410</b>	Line Cord Included	Programmable Digital Timer Kit with Battery Backup (P/N: 99521972) <b>List Price: \$153.00</b>	GU 125 Union - Bronze, 3/8" NPT Fitting Set (P/N: 529912) <b>List Price: \$65.00</b>	N/A	N/A
UPS 15-35 SUC/TLC (Timer and Line Cord Incl. (P/N: 99452478) <b>List Price: \$501.00</b>		Included	GU 125 Union - Bronze, 3/4" NPT x Union Isolation Fitting Set (P/N: 519852) <b>List Price: \$70.00</b>		
UPS 15-55 SUC/TLC (Timer and Line Cord Incl.) (P/N: 99452479) <b>List Price: \$572.00</b>					
UPS 15-35 SFC (P/N: 59896772) <b>List Price: \$501.00</b>	Conduit	Programmable Digital Timer Kit with Battery Backup and Line Cord Attachment (P/N: 99519620) <b>List Price: \$168.00</b>	3/4" NPT Bronze Isolation Flange Set (P/N: 96806130) <b>List Price: \$98.00</b>		
UPS 15-55 SFC (P/N: 59896773) <b>List Price: \$572.00</b>					
ALPHA2 15-55 SFC/LC Line Cord Included (P/N: 99163972) <b>List Price: \$693.00</b>	Line Cord Included	Programmable Digital Timer Kit with Battery Backup (P/N: 99521972) <b>List Price: \$153.00</b>			
UP 15-10 SU7P/TLC (Timer, Line Cord, Valve and Flex Hoses Included) (P/N: 99452459) <b>List Price: \$539.00</b>		Included	N/A	Additional Bypass Valve (P/N: 595926) <b>List Price: \$115.00</b>	Additional 3/2" FNPS X 1/2" FNPS X 12" Flex Hoses (P/N: 599390) <b>List Price: \$21.00</b>

Visit [grundfos.ca/pei](http://grundfos.ca/pei) to learn more about Natural Resources Canada (NRC) pump energy index (PEI) requirements and PEI ratings on specific Grundfos models.