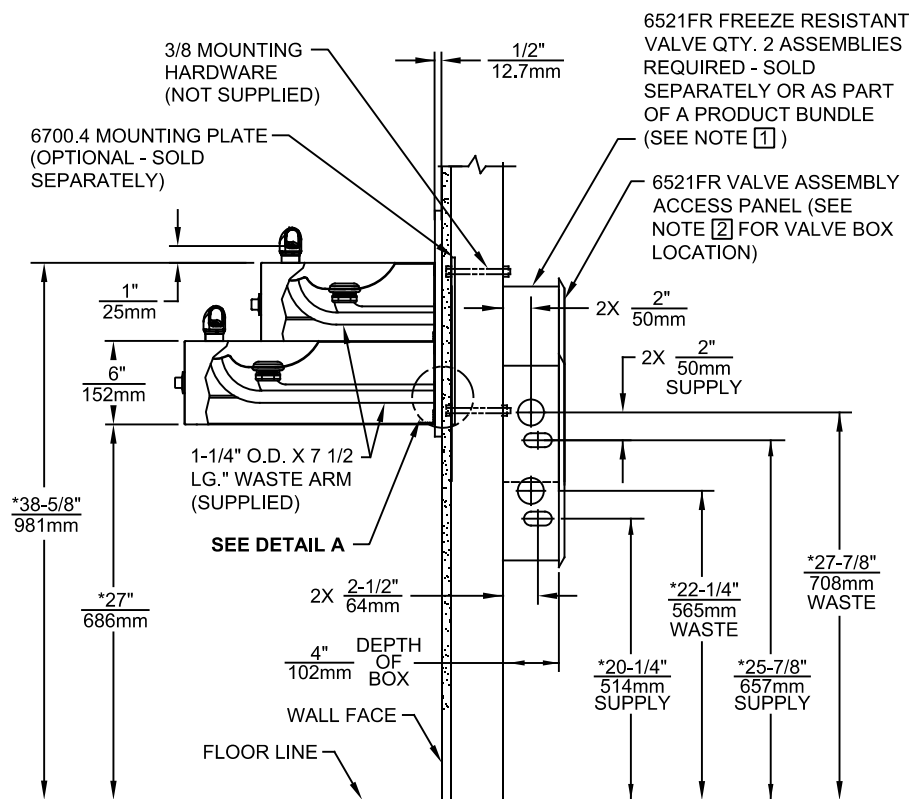
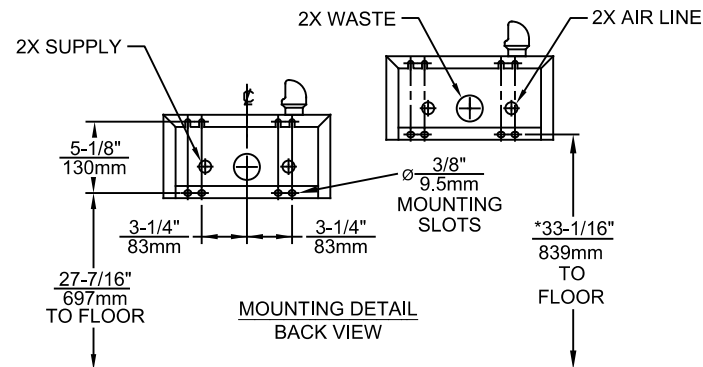


DETAIL A



NOTES:

- 1 PRODUCT BUNDLES AVAILABLE:
MODEL 1119FRB (QTY. 1 EACH 1119FR, 6700.4 & QTY. 2 EACH 6521FR).
MODEL 1119FRP (QTY. 1 EACH 1119FR, 6700.4, 6700, BP32*, 1920FR* & 6469* (*NOT SHOWN), & QTY. 3 EACH 6521FR). SEE 6521FR INSTALLATION INSTRUCTIONS FOR CONNECTION DETAILS.
- 2 VALVE ASSEMBLY MUST BE INSTALLED IN A WARM AREA. PROVISIONS SHOULD BE MADE TO ALLOW ACCESS TO ACCESS PANEL

- 3 MAXIMUM ADJUSTABLE RANGE IS 15° FROM PARALLEL TO BACK OF WALL.
4. HOLD ROUGH-IN DIMENSIONS $\pm 1/4"$ (6.4mm).
- 5.*WHEN INSTALLING THIS UNIT LOCAL, STATE OR FEDERAL CODES SHOULD BE ADHERED TO. FOR INSTALLATION HEIGHTS OTHER THAN SHOWN, DIMENSIONS MARKED (*) MUST BE ADJUSTED ACCORDINGLY.



1455 KLEPPE LANE
SPARKS, NEVADA 89431
(775) 359-4712 FAX (775) 359-7424
E-MAIL: HAWS@HAWS.CO.COM
WEBSITE: WWW.HAWS.CO.COM

ECN NO.	REVISED PER	BY:	MODEL(S)	PART NUMBER
	ECN: 5932	FV		0002076627.D
DRAWN:	DATE:	CHK'D:	1119FR	REVISION
FELIX V.	6/10/98	KM		16
APPROVED:	DATE:		SCALE: 1:14.5	DRAWING TYPE: INSTALLATION
FV	10/17/24			SIZE: A SHEET 1 OF 1