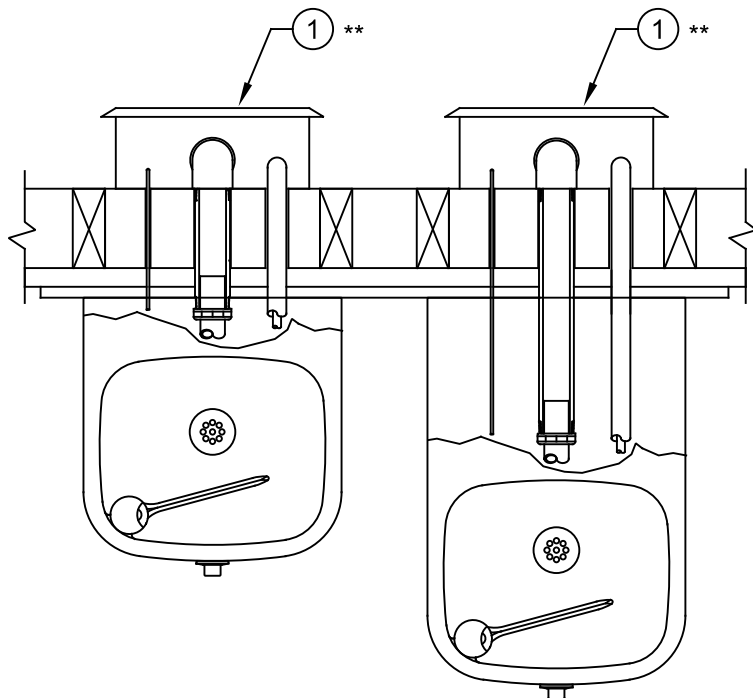


PARTS BREAKDOWN

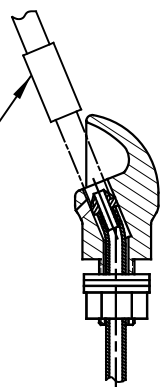


ITEM	DESCRIPTION	PART NO.
** 1	FREEZE RESISTANT VALVE	6521FR
2	BOTTOM PLATE 1105	PBM1105
3	BUBBLER HEAD 5703M	5703M
4	PUSH BUTTON ASSEMBLY	5881PBA
* 5	MOUNTING PLATE	6700.4
6	BOTTOM PLATE 1109	PBM1109

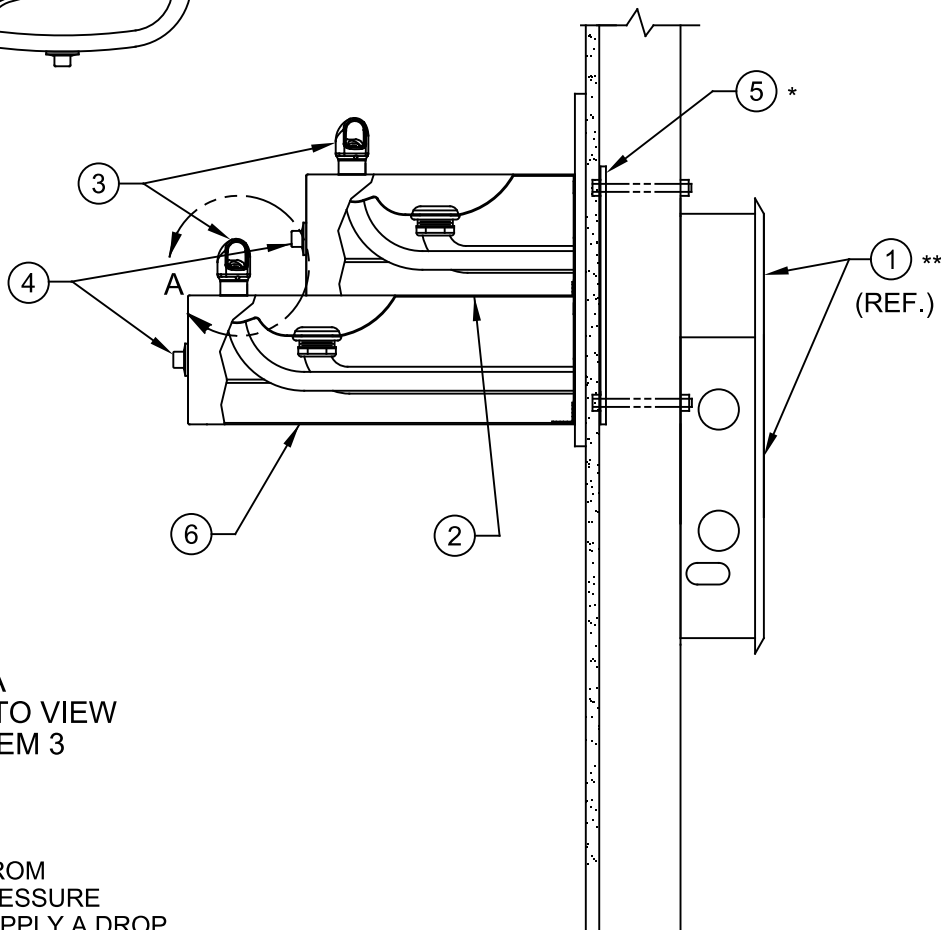
* OPTIONAL - SOLD SEPARATELY OR AS PART OF
PRODUCT BUNDLES 1119FRB & 1119FRP.

** REQUIRED - SOLD SEPARATELY OR AS PART OF
PRODUCT BUNDLES 1119FRB & 1119FRP.

1
REMOVE INSERT
WITH
5/16 HEX SOCKET
(NOT SUPPLIED)




DETAIL A
ROTATED 90° INTO VIEW
DETAIL OF ITEM 3



NOTE:

- 1 ENSURE TUBE IS DISCONNECTED FROM
"PUSH-IN" TYPE CONNECTOR ON PRESSURE
REGULATOR PRIOR TO REMOVAL. APPLY A DROP
OF LOCTITE 222MS ON NOZZLE THREADS PRIOR
TO REASSEMBLING BACK ONTO BUBBLER HEAD.
REATTACH TUBE TO "PUSH-IN" TYPE
CONNECTOR ENSURING IT IS FULLY BOTTOMED
OUT.

WHEN ORDERING PARTS PLEASE SPECIFY MODEL NUMBER.

		1455 KLEPPE LANE SPARKS, NEVADA 89431 (775) 359-4712 FAX (775) 359-7424 E-MAIL: HAWS@HAWS.CO.COM WEBSITE: WWW.HAWS.CO.COM	
ECN NO.	REVISED PER	BY	MODEL(S)
	ECN: 5932	FV	1119FR
DRAWN	DATE	CHKD	
FV	08-20-88	KM	
APPROVED	DATE		
FV	10/17/24		
SCALE: 1:9		DRAWING TYPE: PARTS BREAKDOWN	SIZE: A SHEET 1 OF 1
PART NUMBER		REVISION	
0002076627		16	