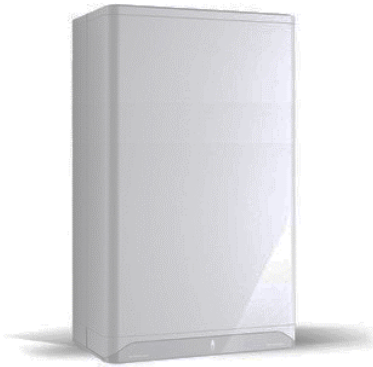


SFT SUPERFLOW™ Tankless Water Heater



Job Name _____

Address _____

Designer/Engineer _____

Wholesaler _____

Mechanical Contractor _____

Model / Quantity SFT 199-1 _____

Date _____

Fuel Type: Natural gas Propane (field conversion included)



Features

- Pressure vessel constructed of aluminum with a copper water way
- Features a U.E.F. of .90
- Vertical combustion chamber and a down firing burner allows gravity drainage of condensate
- Metal fiber knit burner
- Direct spark ignition
- Brushless DC fan
- Zero governing 24V gas valve
- Factory installed DHW inlet strainer

Certifications

- Tested and certified to ANSI Z21.10 / CSA 4.3 Gas Water Heater Standard
- Complies with SCAQMD Rule 1146.2 for Low NOx (<20ppm)
- Complies with NSF / ANSI 372 Low Lead Content Standard

Water Heater Control

- Integrated touch sensitive display panel
- Diagnostic display of temperature sensors, DHW flow rate and flame current
- Wireless cascade function allows up to 8 SFT 199-1s to operate together to satisfy a common demand

Warranties

- Heat exchanger carries a fifteen (15) year limited warranty for residential applications without recirculation or with controlled recirculation
- Heat exchanger carries a five (5) year limited warranty for residential applications with uncontrolled recirculation or when used for space heating
- Heat exchanger carries a three (3) year limited warranty for commercial applications
- Burner, controls, and other included equipment carry a five (5) year warranty for residential applications or a one (1) year warranty for commercial applications

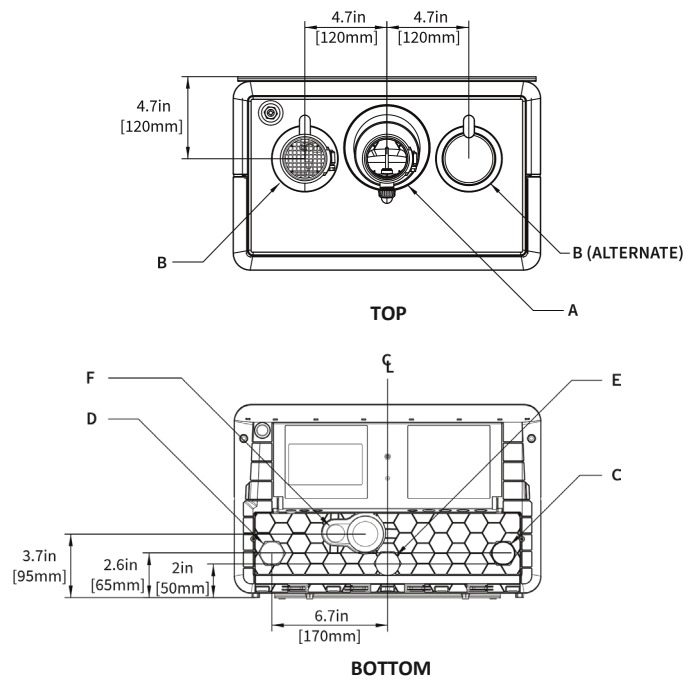
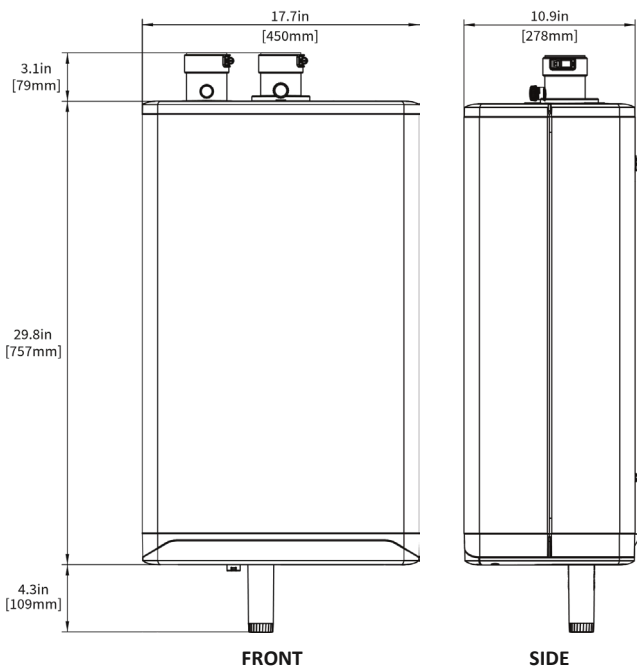
Optional Accessories

- Floor Stand designed for quick onsite assembly
- PVC Sidewall Termination Kits

SFT SUPERFLOW™ Tankless Water Heater

SPECIFICATION	SFT 199-1
CSA Input (Natural Gas or Propane) - MBH	28.5 – 199
U.E.F.	.90
Minimum Gas Pressure (Natural Gas or Propane) – inch w.c.	4
Maximum Gas Pressure (Natural Gas or Propane) – inch w.c.	14
Power (120Vac/60Hz) – Watts @ full fire with internal pump	100
Weight (empty) - lbs / Kg	68 / 31
Maximum Operating Pressure - PSI	150
Domestic hot water delivery @ 35°F/19°C temp. rise – GPM / LPM	10.1 / 38
Domestic hot water delivery @ 45°F/25°C temp. rise – GPM / LPM	7.9 / 30
Domestic hot water delivery @ 67°F/36°C temp. rise – GPM / LPM	5.4 / 20
Max equivalent vent length 2" PVC, CPVC, PP (USA: ASTM D1785, UL1738, Canada: ULC-S636)	65*
Max equivalent vent length 3" PVC, CPVC, PP (USA: ASTM D1785, UL1738, Canada: ULC-S636)	120'

* Approximate input derate of 10-16% at 2" maximum vent length



DESCRIPTION	DIMENSION
A Exhaust Outlet	2" Schedule 40 PVC
B Combustion Air Inlet	2" Schedule 40 PVC
C Cold Domestic Water Connection	3/4" Male NPT
D Hot Domestic Water Connection	3/4" Male NPT
E Gas Inlet	3/4" Male NPT
F Condensate Outlet	3/4" Hose

SURFACE	MINIMUM DISTANCE FROM COMBUSTIBLE SURFACES	RECOMMENDED DISTANCE FOR INSTALLATION AND SERVICE
Front	2"	24"
Rear	0"	0"
Left Side	1.5"	6"
Right Side	4"	6"
Top	2"	24"
Bottom	8"	24"