

Endless hot water  
**comfort**  
and savings for  
tomorrow's homes



---

We make it easy to go tankless

# No one has put more ingenuity into tankless water heaters

## NPE-A2 Advanced ultra high efficiency condensing tankless water heaters



The most advanced condensing tankless units in the industry with ComfortFlow® built-in buffer tank and recirc pump for continuous hot water and durable dual stainless steel heat exchangers. Install easily with 1/2" gas and 2" PVC venting.

Model	Natural Gas or LP Gas
NPE-180A2 series	10,000–150,000 BTU/H
NPE-210A2 series	12,000–180,000 BTU/H
NPE-240A2 series	13,300–199,900 BTU/H

## NPE-S2 Standard ultra high efficiency condensing tankless water heaters



NPE-S2 offers an incredibly high efficiency rating of up to 0.96 UEF. Standard Navien advantages include durable dual stainless steel heat exchangers, 1/2" gas capabilities and 2" PVC venting.

Model	Natural Gas or LP Gas
NPE-150S2 series	18,000–120,000 BTU/H
NPE-180S2 series	10,000–150,000 BTU/H
NPE-210S2 series	12,000–180,000 BTU/H
NPE-240S2 series	13,300–199,900 BTU/H

## NPN-Universal high efficiency premium non-condensing tankless water heaters\*



The new Navien NPN water heaters are the first non-condensing tankless with patented NaviTech™ stainless steel heat exchangers and burners. The NPN-Universal is 0.81 UEF rated, installs inside or outside and is available in NG or LP.

Model	Natural Gas or LP Gas
NPN-160U-NG / NPN-160U-LP series	10,700–160,000 (BTU/H)
NPN-180U-NG / NPN-180U-LP series	10,700–180,000 (BTU/H)
NPN-199U-NG / NPN-199U-LP series	10,700–199,900 (BTU/H)

## NPN-Exterior high efficiency premium non-condensing tankless water heaters\*



The new Navien NPN-Exterior non-condensing water heaters have all the advantages of the NPN-Universal but are designed specifically for outdoor use. These sleek, compact units can easily be installed anywhere outside the home.

Model	Natural Gas or LP Gas
NPN-160E-NG / NPN-160E-LP series	10,700–160,000 (BTU/H)
NPN-180E-NG / NPN-180E-LP series	10,700–180,000 (BTU/H)
NPN-199E-NG / NPN-199E-LP series	10,700–199,900 (BTU/H)

\*NPN non-condensing units are not available in Canada.



Have you joined the eco-friendly, energy saving, endless hot water **tankless** revolution?



# Navien brings innovative solutions for a greener planet



As an energy conscious builder, your success depends on offering the most energy efficient HVAC and DHW systems. Incorporating Navien technology into your designs, will provide the highest level of comfort and efficiency for your customers.

## U.S. Green Building Council LEED Points

	NPE-2 series water heater	1
	NPE-2 series location	2
	NPE-2 series recirculation	3

## Lower HERS home index score

## Environmentally friendly low NOx

The NPN series non-condensing eco-friendly stainless steel burner emits very low NOx levels, like our industry leading NPE-2 series condensing tankless water heaters.



## Supporting your green building reputation with world class service, training and warranty

Navien is a great hot water and heating solution for energy efficient homes. Besides our energy saving systems, Navien's advanced customer services, webinars, extensive field support and training events, not to mention our strong warranty, gives builders, architects and contractors the ultimate peace of mind.



## Warranty

Application		Labor	Parts	Heat Exchanger	
Residential	Standard	1 year	5 years	15 years	
	Uncontrolled Recirculation <sup>2</sup>	1 year	3 years	5 years	
Commercial or Combi <sup>1</sup>	Standard	1 year	5 years	NPE-2: 8 years	NPN: 5 years
	Uncontrolled Recirculation <sup>2</sup>	1 year	3 years	3 years	

<sup>1</sup>Combi refers to a combination potable water and space heating application. Water heaters cannot be used in space heating only applications.

<sup>2</sup>Uncontrolled-Recirculation: External pumps configured to circulate continuously through the water heater are subject to the uncontrolled recirculation warranty terms. An aquastat is the minimum pump control requirement for DHW or storage tank recirculation in order to maintain the full controlled recirculation warranty.

For complete details please refer to the full warranty at [Navieninc.com](http://Navieninc.com).



We make it easy to go tankless

# NPE-A2 Advanced

Navien Premium Efficiency-Advanced  
Condensing tankless water heaters



- Exclusive ComfortFlow® internal recirculation
- Field gas convertible
- Earn up to 3 LEED points with recirculation
- Lower the HERS home index score
- Recirculation activation with built-in HotButton® control

## ComfortFlow®

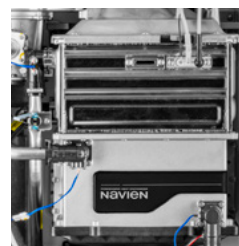
### Built-in recirculation system



Navien ComfortFlow® is the first to incorporate a built-in insulated buffer tank and recirculation pump. The insulated buffer tank enables the NPE-A2 to operate at minimal flow rates. The built-in recirculation pump allows the NPE-A2 to recirculate water either through an external recirc line or through existing supply lines while using NaviCirc™, without the need for external pumps or controls.



Are you using  
**recirculation**  
in your home?



Dual stainless steel heat exchangers deliver unmatched durability while resisting corrosion better than copper.



The Navien NPE-2 series tankless water heaters occupy 80% less space than traditional 50 gallon tank-type heaters.

# NPE-S2 Standard

## Navien Premium Efficiency-Standard Condensing tankless water heaters



- More output for the money
- Lower installation costs
- Field gas convertible
- Earn up to 3 LEED points
- Lower HERS score




<b>15</b> YEARS	<b>Heat Exchanger</b>
<b>5</b> YEARS	<b>Parts</b>
<b>1</b> YEAR	<b>Labor</b>



For homes with an extra high demand, NPE-2 units can be cascaded together without a separate controller.

Navien NPE-2 series models come with world-class quality and one of the best warranties in the industry.

New EZNav™ control with set-up wizard software uses simple text and icons making startup, status and diagnostics fast & easy.

Field gas convertibility is easy with orifice conversion kits for NG to LP and high altitude. 

Installations in or near any living areas of the house are possible with the quiet running NPE-2 tankless water heaters.



We make it easy to go tankless

# NPN-Universal

## Navien Premium Non-condensing-Universal Indoor/outdoor tankless water heaters



**NPN-Universal**  
configured  
for indoor use.

**NPN-Universal**  
with vent cap  
for outdoor use.

- NaviTech™ long lasting stainless steel heat exchanger and stainless steel burner
- 0.81 UEF for all models
- NPN-U converts easily from indoor to outdoor use with optional vent cap
- Strong residential and commercial warranties
- NaviVent™ concentric 3" x 5" venting
- Units available in either NG or LP

**NAVITECH™**  
STAINLESS STEEL  
HX AND BURNER

**PREMIUM  
INTEGRATED  
CONTROLS**

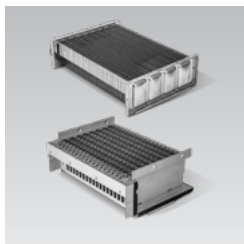
**0.81 UEF**

**98°-140°**  
TEMP RANGE

FLOW **9.5 GPM**  
@ 35° TEMP RISE



Everyone loves getting into **endless** hot water with Navien tankless



**Navitech™ stainless steel technology.** Patented SS heat exchanger and SS burner lasts longer than copper and runs more efficiently than other systems.



**Space saving and lighter weight design.** These sleek wall-hung units use much less space and are substantially lighter than traditional tank water heaters.



**Low noise levels.** Installations in or near any living areas of the house are possible with the quiet running NPN water heaters.



**Cascading capability.** For increased domestic hot water flow demand, the NPN can be cascaded with another NPN unit.



**NPN Series integrated control panel** allows you to adjust water temperature, operation status and troubleshooting.

# NPN-Exterior

Navien Premium Non-condensing-Exterior  
Outdoor only tankless water heaters



- NaviTech™ long lasting stainless steel heat exchanger and stainless steel burner with precision control flame technology for eco-friendly low NO<sub>x</sub> emissions comparable to condensing burners
- 0.81 UEF for all models
- Specifically designed for outdoor use only
- Strong residential and commercial warranties
- Includes indoor remote control system
- Units available in either NG or LP



**NaviTech™**  
stainless steel  
technology makes  
it easy for builders  
to go tankless



# More ingenious options of Navien advanced technology



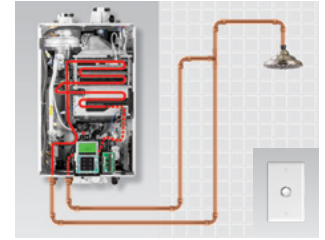
## Wi-Fi remote control system

This add-on accessory will enable customers with smartphones and tablets to control temperatures remotely, access usage data and receive diagnostic notifications on all Navien NPE-2 and NPN tankless water heaters.



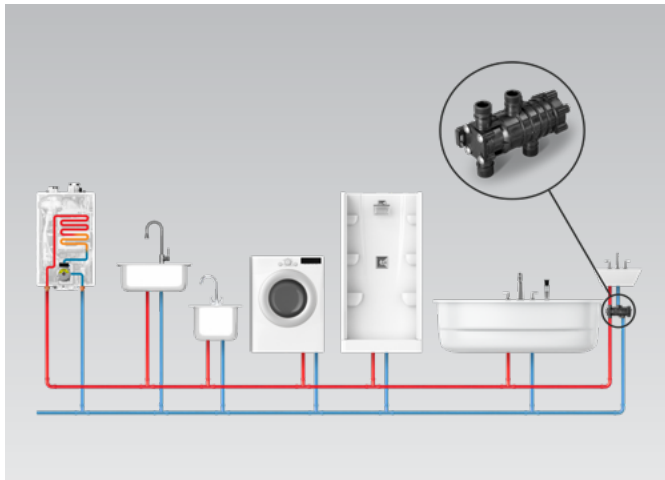
## Hot water on-demand system\*

At the push of a button, the HotButton® hot water system activates recirculation pump and gas fired burner to heat water in the supply lines to provide hot water only when needed. NPE-2 comes with a built-in HotButton controller.



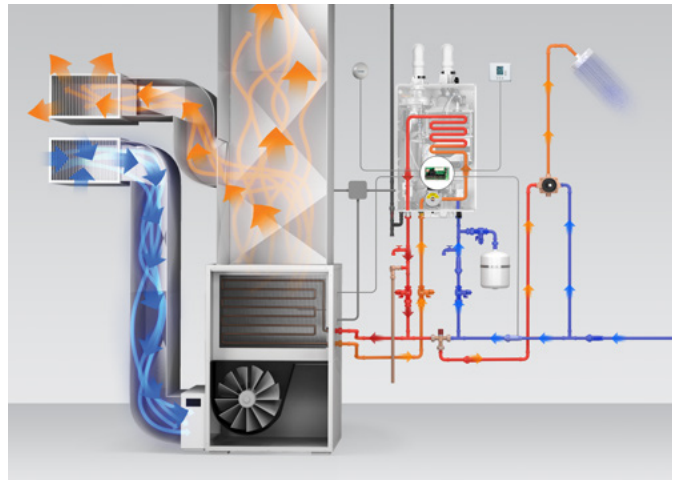
## Recirculation valve\*

Designed for recirculation of domestic hot water in applications where a dedicated return line is not available. NaviCirc valve works best installed under furthest fixture from the water heater.



## Combination heating & DHW system\*

The Navien H2Air Kit includes an add-on controller to integrate space heating and DHW between any NPE-2 or NPN tankless water heater and a hydronic air handler.



\*External pump needed for NPE-S2 and NPN models.

Discover why  
**today's**  
builders are switching to  
**Navien**

Navien Inc.  
20 Goodyear, Irvine, CA 92618  
800-519-8794, Navieninc.com

