



Q4100C9050
Lead wire = 11"
Stripped Ends



Q4100C9042
Lead wire = 5.5"
Molex Internally
Keyed



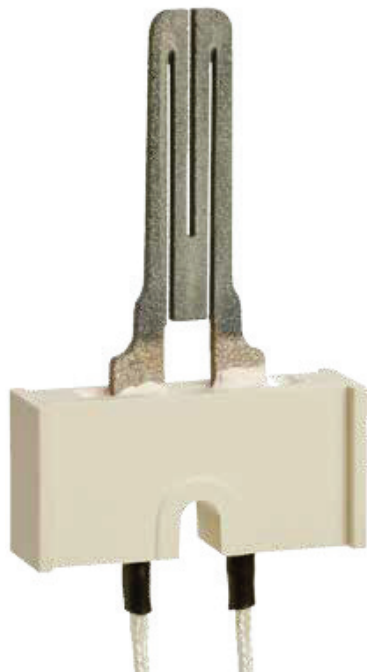
Q4100C9044
Lead wire = 6"
Receptacle



Q4100C9068
Lead wire = 5.25"
Receptacle



Q4100C9070
Lead wire = 5.668"
Female Quick
Connect



Q4100C9048
Lead wire = 5.25"
Receptacle
Bracket = A



Q4100C9056
Lead wire = 5.25"
Receptacle



Q4100C9040
Lead wire = 5.25"
Receptacle



Q4100C9058
Lead wire = 4.5"
Molex Front Lock



Q4100C9066
Lead wire = 5.25"
Receptacle
Bracket = C, D, E

DIRECT REPLACEMENT IGNITERS

Resideo offers a full line of direct replacement, 120 V, silicon carbide igniters. They cover all the major configurations of element shapes, brackets, connectors, and lead wire lengths. Made in the USA and backed by a 2-year warranty.

Use this guide to easily select the igniter you need. Igniters are shown at actual size. Lead wire length and connector type are listed with each product.

Included bracket is listed with each product; not all igniters include a bracket.

Resideo Technologies, Inc.
1985 Douglas Drive North
Golden Valley, MN 55422
1-800-468-1502
resideo.com



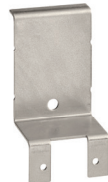
Bracket A



Bracket B



Bracket C



Bracket D



Bracket E

For more information
resideo.com/pro