

COPPER STUB OUT BRACKET

» 521-85 SERIES

SecureAll™ Bracket

ITEM # SUBMITTED	_____
JOB NAME	_____
LOCATION	_____
ENGINEER	_____
CONTRACTOR	_____
PO#	_____ TAG _____

SPECIFICATION

Sioux Chief's SecureAll copper plated bracket shall be used where necessary to support 1/2", 3/4" or 1" nominal copper stub outs for water supply lines. Bracket shall be stamped from heavy-gauge steel then copper electro-plated and then a clear coat finish applied to reduce corrosion. Bracket shall not have any areas of exposed plain steel. Bracket design shall include extruded holes or notches for additional soldering surface. Bracket design shall also include formed stiffening ribs along top and bottom of bracket for ultimate strength and rigidity. Bracket shall be IAPMO certified.

Bracket shall feature nominal 1/2" holes on 2-inch centers; nominal 3/4" and 1" holes on 4-inch centers and nominal 1/2" and 3/4" notches on 2-inch centers.

INSTALLATION

Wear gloves and eye protection to avoid injury. Secure bracket to studs using nails or screws (not provided). Clean and prepare copper stub out for soldering. Insert copper tube into pipe hole. Apply flux. Heat copper tube not bracket when applying solder.

MATERIALS

18-gauge copper-plated steel

MAXIMUM LOAD RATING

25 lbs.

DIMENSIONS

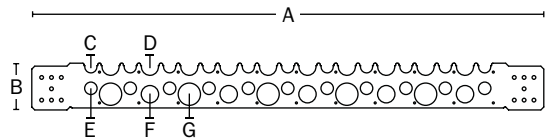
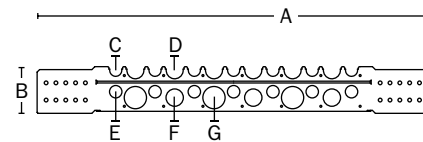
	521-851	521-852
Material thickness	0.048"	0.048"
A: Length	20"	26"
B: Height	2.375"	2.375"
C: Pipe opening	.614"	.614"
D: Pipe opening	0.864"	0.864"
E: Hole ID	0.632"	0.632"
F: Hole ID	0.882"	0.882"
G: Hole ID	1.132"	1.132"
H: Nail hole diameter	0.190"	0.190"



521-852



521-851



Choose Item Number

521-85A

e.g. **521-851:** SecureAll bracket for 16" stud bays

STUD BAY A

1 = 16"

2 = 24"