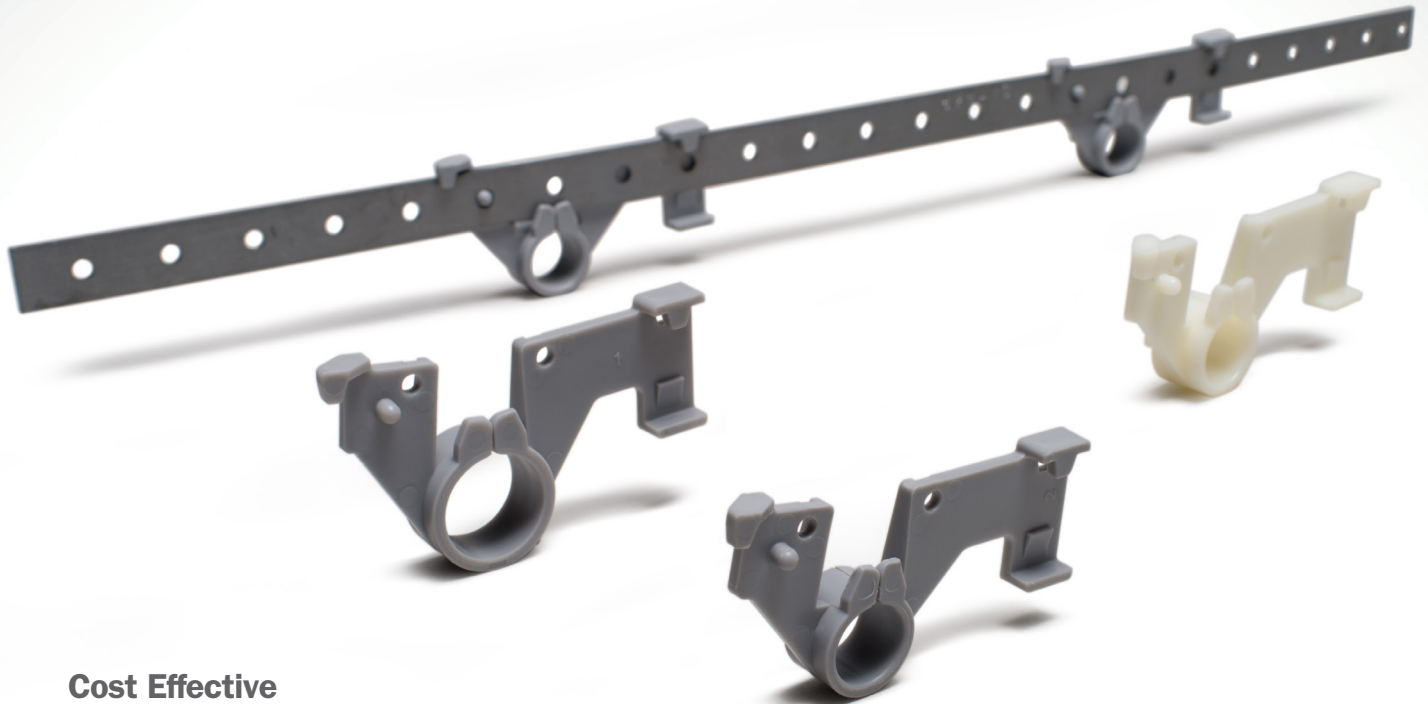


SimpleStrap™

Tube & Stub Out Clamp



Cost Effective

Economical alternative to cutting wood blocks or metal studs for securing stub outs

Versatile

One clamp supports pipe vertically or horizontally.

Nail the galvanized flat support bracket to the face of the stud for horizontal wall penetrations or simply bend one end of the bracket and mount inside the stud cavity to stabilize vertical pipe running between the studs.

Available for 1/2" or 3/4" CTS, the SimpleStrap is non-corrosive and compatible with Copper, PEX or CPVC.

Clean & Consistent

Scrap wood pulled from jobsite trash piles is usually split, warped, wet, dirty, and always the wrong length.

Wet wood promotes mold growth. The 14-ga. galvanized steel support bracket resists rust and is easily installed with two nails or screws.

Standardize

Reduce variable jobsite costs by providing your team with the same materials on every job ... installed the same way, using the same tools, with the same results ... on every job.

Made in the USA

Both straps and brackets are made in America.

Supply

Drainage

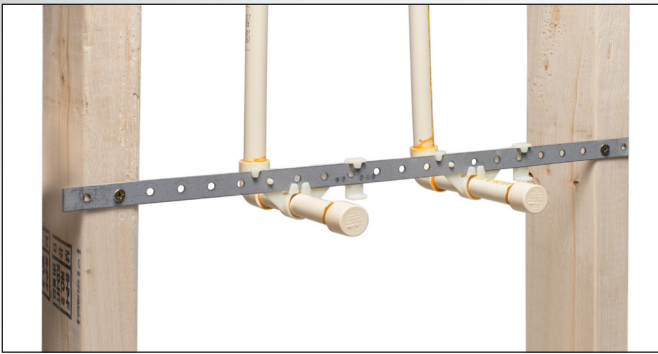
Support

Specialties

www.siouxchief.com

TAKE THE FIELD.





Eliminate cutting 2x4 wood blocks and switch to this low-cost solution for securing stub outs.



Cost effective, especially when stub outs are in separate stud cavities.



525-02



525-03



525-02G



525-6920



525-20B

Buying Information

ITEM NO.	DESCRIPTION	MIN QTY	CASE QTY
BULK			
525-02	1/2" CTS Standard SimpleStrap™	100	1000
525-02G	1/2" CTS Glueable SimpleStrap™	100	1000
525-03	3/4" CTS Standard SimpleStrap™	100	1000
525-6920	20" Flat Support Bracket, Galvanized	100	100
525-6926	26" Flat Support Bracket, Galvanized	100	100
525-20B	L-Bent Support Bracket For 16" Stud Bays	100	100
525-27B	L-Bent Support Bracket For 24" Stud Bays	100	100
KITS			
525-2002PK2	1/2" CTS Straps w/ 20" Bracket and Nails, 1 kit/bag	50	50

Note: Kit includes 1 bracket, 2 clamps, 2 nails and 1 instruction sheet.
 All SimpleStraps™ are compatible with copper, PEX and CPVC.
 Glueable SimpleStraps™ are designed specifically to be glued to CPVC stub outs.

