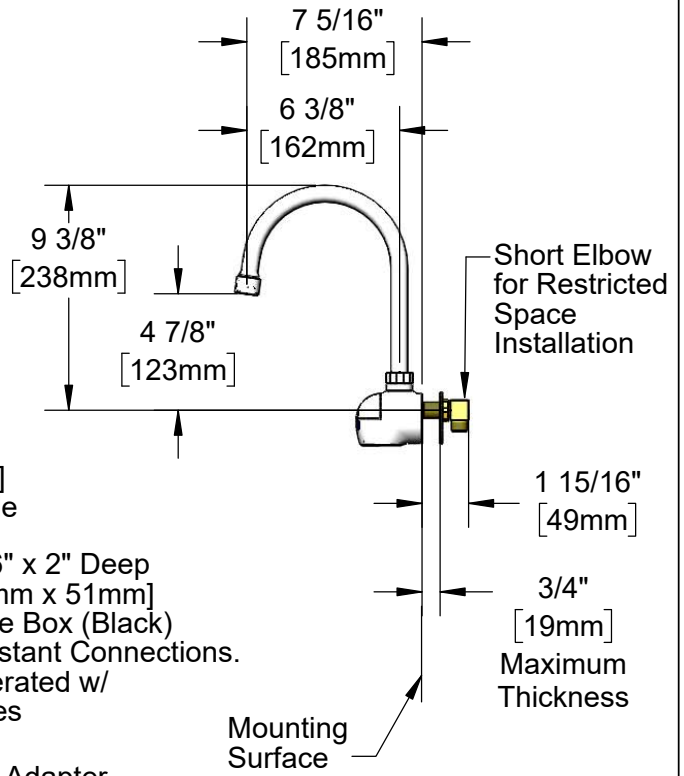
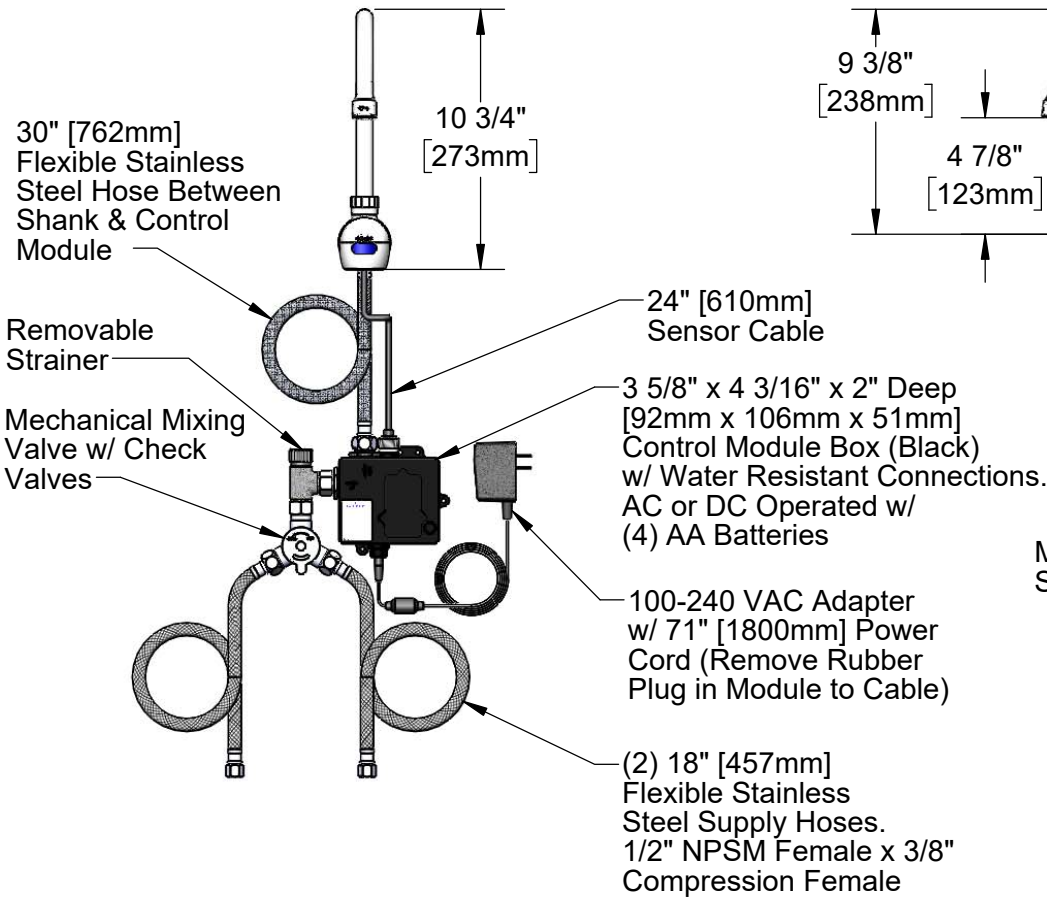


Swivel Gooseneck  
w/ 2.2 GPM [8.3 LPM]  
Vandal Resistant Aerator



ADA Compliant

This Space for Architect/Engineer Approval

Job Name \_\_\_\_\_ Date \_\_\_\_\_

Model Specified \_\_\_\_\_ Quantity \_\_\_\_\_

Customer/Wholesaler \_\_\_\_\_

Contractor \_\_\_\_\_

Architect/Engineer \_\_\_\_\_

Rough-In Requirement:  
Ø 1 1/8" [29mm] Mounting Hole

Model Number

**5EF-1D-WG**

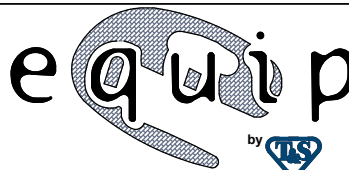
Product Specifications:

Electronic Faucet: Wall Mount Swivel Gooseneck, 2.2 GPM VR Aerator, AC-DC Control Module, Temperature Control Mixing Valve, Check Valves & (2) 18" Flexible Supply Hoses

Product Compliance:

ASME A112.18.1 / CSA B125.1  
NSF 61 - Section 9  
NSF 372 (Low Lead Content)  
ANSI A117.1 (ADA)  
UL 1951

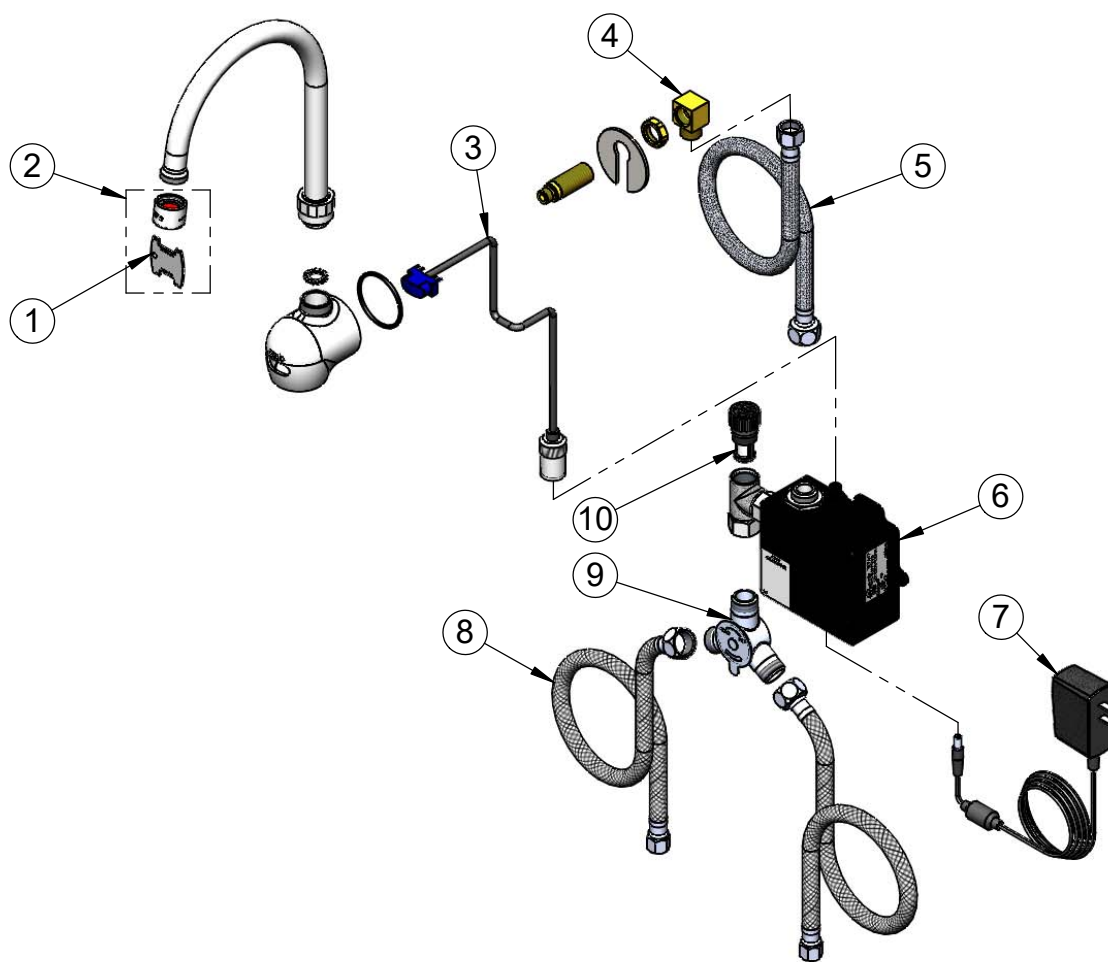
equip  
Foodservice  
Accessories



2 Saddleback Cove, P.O. Box 1088  
Travelers Rest, South Carolina 29690  
Phone: 800.891.4808 Fax: 800.868.0084  
equip.tsbrass.com

Drawn: MRC Checked: JRM Approved: JHB Date: 11/21/19 Scale: 1:8 Sheet: 1 of 2

ITEM NO.	SALES NO.	DESCRIPTION
1	015425-45	Vandal Resistant Key
2	B-0199-06	VR 2.2 GPM Aerator, 55/64-27 UN Female w/ Key
3	5EF-0003	24" Sensor Cable
4	015345-20	3/8-18 NPSM Low Profile Elbow
5	016325-45	Flex Connector, 3/8 NPSM x 1/2 NPSM
6	5EF-0001	equip Sensor Faucet - Control Module
7	5EF-0002	equip AC Transformer, 100-240 VAC
8	5EF-0005	Supply Hose, 3/8" Compression x 1/2" NPSM
9	5EF-0006	Mechanical Mixing Valve
10	5EF-FILTER	Replacement Filter



Model Number

**5EF-1D-WG**

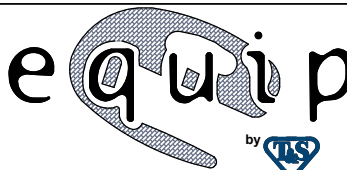
Product Specifications:

**Electronic Faucet: Wall Mount Swivel Gooseneck, 2.2 GPM VR Aerator, AC-DC Control Module, Temperature Control Mixing Valve, Check Valves & (2) 18" Flexible Supply Hoses**

Product Compliance:

ASME A112.18.1 / CSA B125.1  
NSF 61 - Section 9  
NSF 372 (Low Lead Content)  
ANSI A117.1 (ADA)  
UL 1951

equip  
Foodservice  
Accessories



2 Saddleback Cove, P.O. Box 1088  
Travelers Rest, South Carolina 29690  
Phone: 800.891.4808 Fax: 800.868.0084  
equip.tsbrass.com