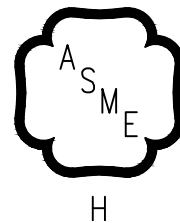


INSTALLATION, OPERATING AND SERVICE INSTRUCTIONS FOR

SERIES 8H / 8HE GAS - FIRED BOILER

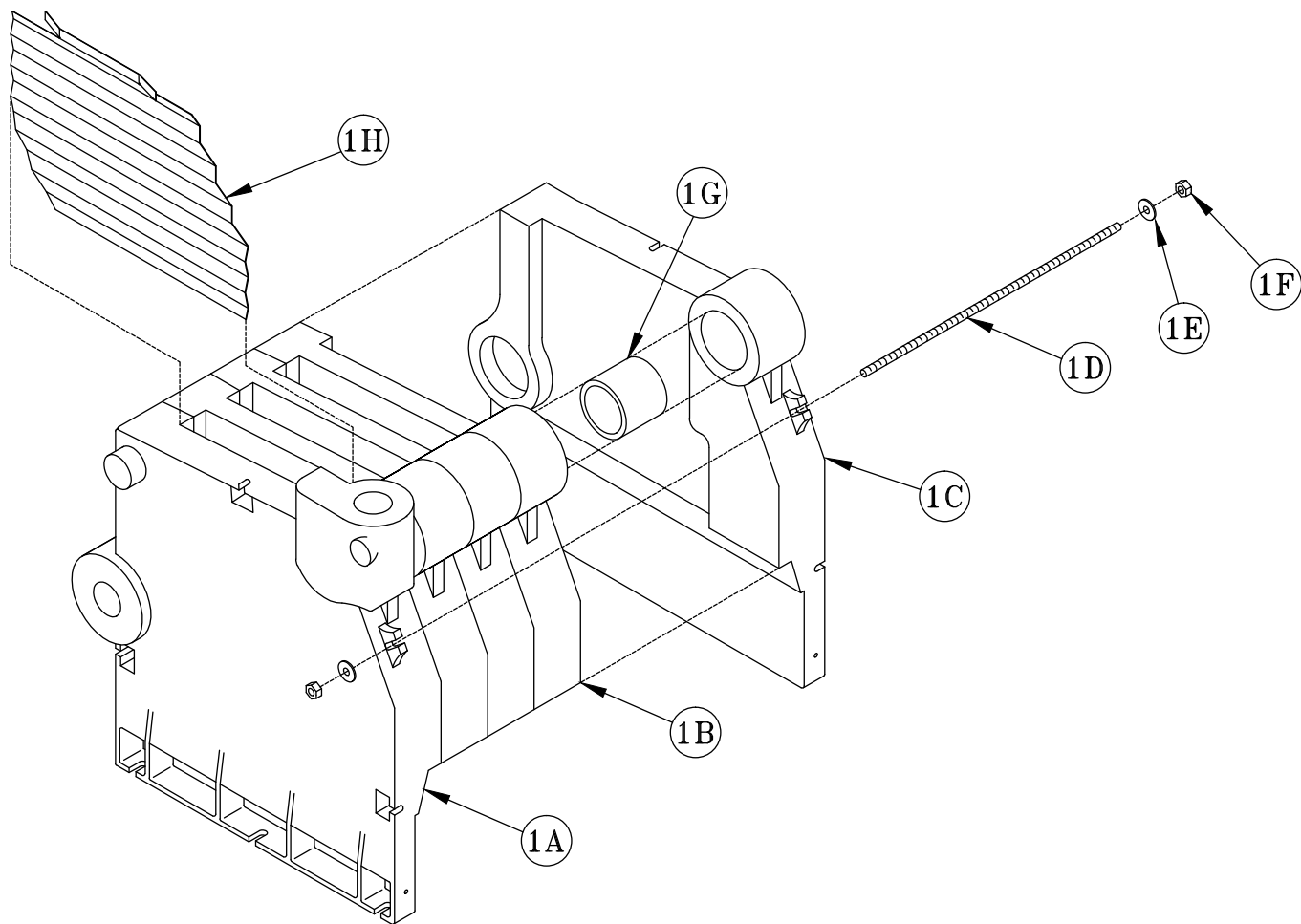


⚠ WARNING

This manual must only be used by a qualified heating installer/service technician. BEFORE installing, read all instructions in this manual and all other information shipped with the boiler. Post all instructions and manuals near the boiler for reference by service personnel. Perform steps in the order given. Failure to comply could result in severe personal injury, death or substantial property damage.



www.burnhamcommercial.com



Item No.	Description	Part No.	Quantity					
			805H	806H	807HE	808HE	809HE	810HE
1. Heat Exchanger Assembly								
1	Complete (Less Flue Baffles)	6171605	1	---	---	---	---	---
		6171606	---	1	---	---	---	---
		6171607	---	---	1	---	---	---
		6171608	---	---	---	1	---	---
		6171609	---	---	---	---	1	---
		6171610	---	---	---	---	---	1
1A	Left End Section	7171601	1	1	1	1	1	1
1B	Intermediate Section	7171603	3	4	5	6	7	8
1C	Right End Section	7171602	1	1	1	1	1	1
1D	Tie Rod	80861032	1	---	---	---	---	---
		80861033	---	1	---	---	---	---
		80861013	---	---	1	---	---	---
		80861034	---	---	---	1	---	---
		80861035	---	---	---	---	1	---
		80861036	---	---	---	---	---	1
1E	Washer	80860600	4	4	4	4	4	4
1F	Nut	80860400	4	4	4	4	4	4
1G	Slip Nipple, 3"	7066002	8	10	12	14	16	18
1H	Flue Baffle	7111622	4	5	---	---	---	---
		7111623	---	---	6	7	8	9