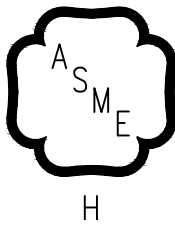


GHE™

Residential

- Condensing
- High Efficiency
- Direct Vent
- Gas-Fired
- Water Boiler



As an ENERGY STAR® Partner, New Yorker Boiler Co, Inc. has determined that the GHE™ Series meets the ENERGY STAR® guidelines for energy efficiency established by the United States Environmental Protection Agency (EPA).



TO THE INSTALLER:

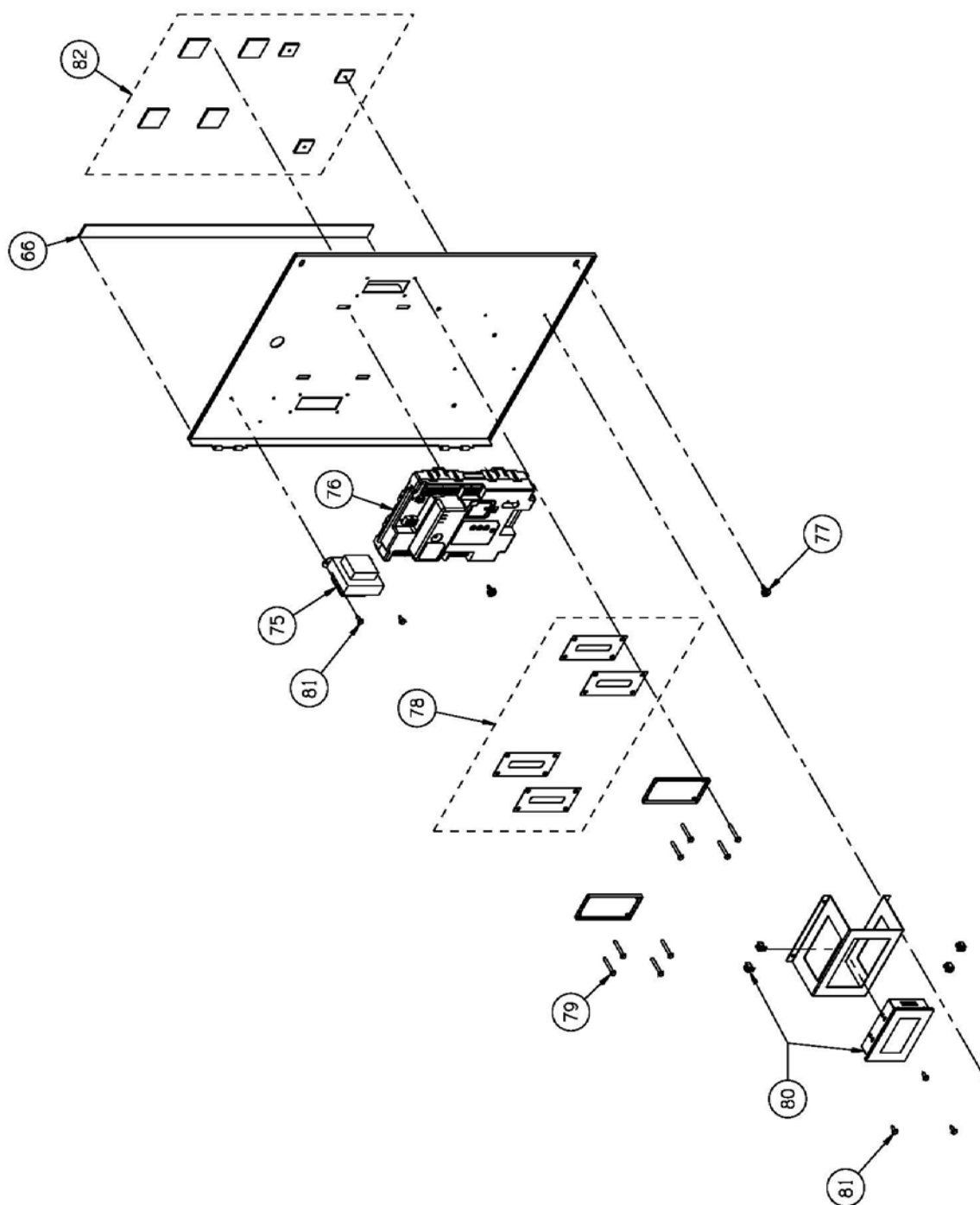
Affix these instructions adjacent to boiler.

TO THE CONSUMER:

Retain these instructions for future reference.

WARNING: Improper installation, adjustment, alteration, service or maintenance can cause property damage, injury, or loss of life. For assistance or additional information, consult a qualified installer, service agency or the gas supplier. This boiler requires a special venting system. Read these instructions carefully before installing.

XV. Service Parts (continued)



XV. Service Parts (continued)

Key No.	Description	Part Number (Qty)				
		80	100	120	150	180
75	Transformer	106034-01				
76	Sola 2.3 Boiler Control	107896-01				
77, 78, 82, 97	Control Door Parts	107872-01				
79	8-18 x 1/2" Self Tapping Screw	Obtain locally				
80	Programmable Display GT02L	107864-04				
81	8-18 x 1/2" Self Tapping Screw	Obtain locally				