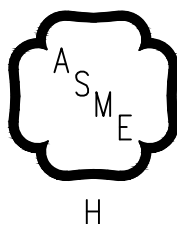


K2WT™

Residential

- Condensing
- High Efficiency
- Direct Vent
- Gas-Fired
- Water Boiler



As an ENERGY STAR® Partner, U.S. Boiler Company has determined that the K2WT™ Series meets the ENERGY STAR® guidelines for energy efficiency established by the United States Environmental Protection Agency (EPA).



TO THE INSTALLER:

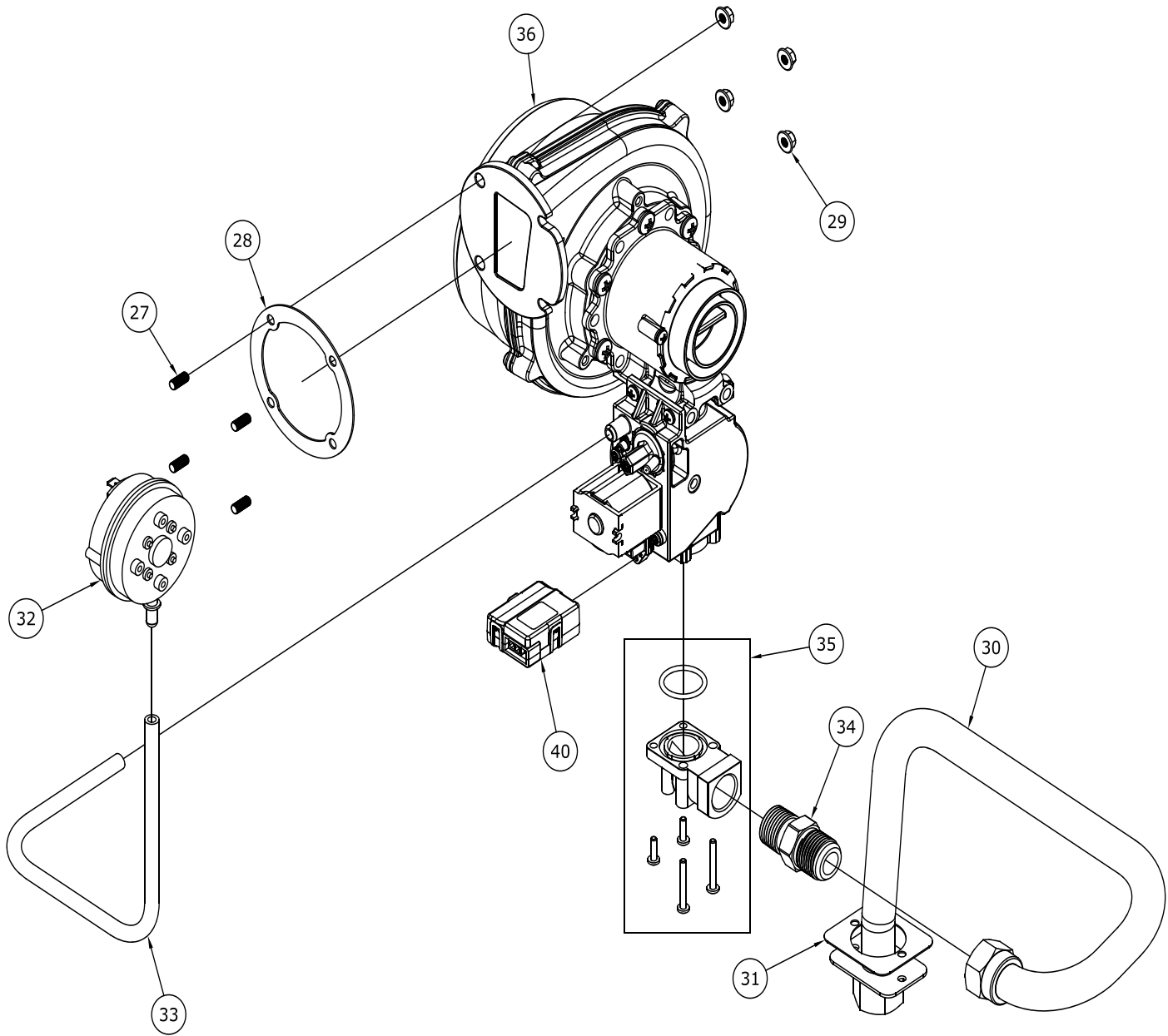
Affix these instructions adjacent to boiler.

TO THE CONSUMER:

Retain these instructions for future reference.

WARNING: Improper installation, adjustment, alteration, service or maintenance can cause property damage, injury, or loss of life. For assistance or additional information, consult a qualified installer, service agency or the gas supplier. This boiler requires a special venting system. Read these instructions carefully before installing.

XV. Service Parts (continued)



XV. Service Parts (continued)

Key No.	Description	Part Number					
		080	100	120	150	180B	180M
27, 28, 29, 36	Gas Train Assembly, Natural Gas	107869-01		107866-01		107867-01	N/A
27, 28, 29, 36	Gas Train Assembly, LP Gas	107868-01		107870-01		107871-01	N/A
Not Shown	LP Gas Conversion Kit	107873-01		107874-01		107875-01	108101-01
27, 28, 29	Blower Outlet Gasket	106029-01					
30, 31, 34	CSST Gas Line Assembly (includes gas line assembly and gasket	106032-01					
32	Air Proving Pressure Switch	107862-01					
33	Silicone Tubing	105855-01					
35	Gas Valve Flange	105831-01					
40	Rectifier Module	105829-01					105830-01
44, 45	Gas Valve Kit	N/A					108541-01
41, 42, 43, 44	Blower Kit	N/A					108540-01
Not Shown	1/2" NPT 90° Street Elbow	N/A			Obtain Locally		
Not Shown	Intake Side Noise Attenuator	108455-01		108456-01	108455-01		N/A

