

Installation, Operating and Service Instructions for

X-2™

- Water Boiler
- Cast Iron
- Chimney Vent
- Gas Fired

Models:

- X-202
- X-203
- X-204
- X-205
- X-206
- X-207
- X-208
- X-209

Manual Contents

Page

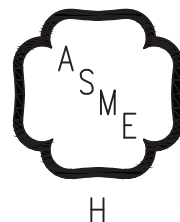
Dimensional and Physical Data	3
Pre-Installation.....	5
Removing Existing Boiler.....	6
Unpack Boiler	6
Venting	7
Water Piping.....	10
Gas Piping	13
Electrical.....	14
System Start-Up and Checkout	18
Operation	23
Before Leaving Jobsite	27
Service and Maintenance	28
How It Works	32
Troubleshooting.....	34
Service Parts	39
Appendix	46

TO THE INSTALLER:

Affix these instructions adjacent to boiler.
Provide model number and serial number when
seeking information and support.

TO THE CONSUMER:

Retain these instructions for future reference.
Contact heating contractor for all issues and support.

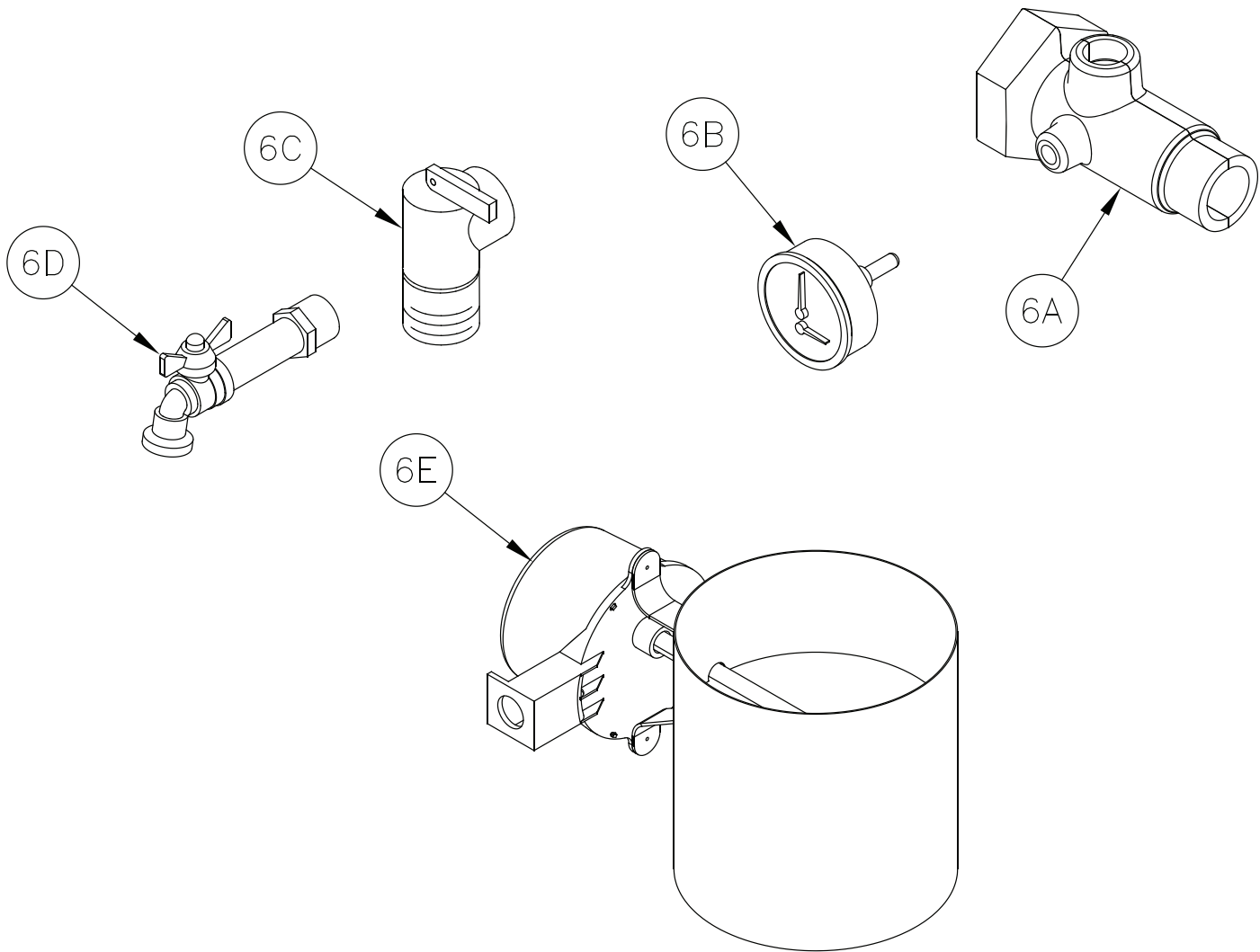


⚠ WARNING

Improper installation, adjustment, alteration, service, or maintenance can cause property damage, injury, or loss of life. For assistance or additional information, consult a qualified installer, service agency or gas supplier. Read these instructions carefully before installing.



15 Service Parts *(continued)*



Key No.	Description	Part Number [Quantity]							
		X-202	X-203	X-204	X-205	X-206	X-207	X-208	X-209
6A	Supply Water Manifold	109614-01 [1]							
6B	Temperature/Pressure Gauge	105894-01 [1]							
6C	30 PSI Relief Valve	109038-01 [1]							
6D	Drain Valve	Obtain Locally (3/4" NPT boiler connection)							
6E	Vent Damper	109634-01 [1]		109634-02 [1]		109634-03 [1]		109634-04 [1]	109634-05 [1]
Not Shown	Taco 007	Obtain Locally							
	Grundfos Alpha 15-55	Obtain Locally							