



MUSTEE

Preferred by the "Pros"

260 DURAWALL® Thermoplastic Shower Walls Square & Rectangular Showers

SEE PAGES 2-3 FOR A LIST OF ACCESSORIES! ►



Design features:

- Formed from high-grade thermoplastic
- Ideal for new or remodel projects...fits DURABASE® and CareGiver® Easy Access Shower Floors (see Accessories section) as well as bases from other manufacturers.
- Fits alcoves up to 60" wide by 40" deep
- Includes six large, molded-in, self-draining shelves ideal for shampoo, soap, etc.
- Panels can be trimmed to simplify installation in out-of-plumb alcoves
- Five panel wall system with seamless corner panels and overlapping edges, create a watertight wall surround.
- Designed to fit Mustee's 3060 ShowerTub™ shower floor, and model 360 and 3739 CareGiver® Easy Access Shower Floors.
- Adhesive mounts to drywall or like surfaces
- Available in white or bone
- Smooth, colorfast glossy finish, resists scuffs.
- Mold and mildew-resistant...easy to clean
- Available STYLEMATE® shower enclosures feature tempered safety glass and a range of finishes (see Accessories section).

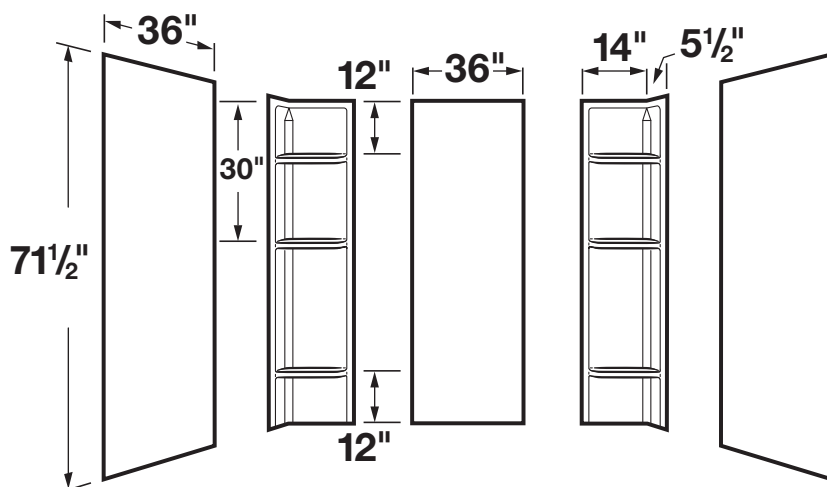
Specifications

| Model | Color | Fits Alcoves | Shelves | UPC |
|--------|-------|----------------------------|---------|-----------------|
| 260WHT | White | Width to 60"; depth to 40" | 6 | 6 71031 00053 8 |
| 260BN | Bone | Width to 60"; depth to 40" | 6 | 6 71031 00050 7 |

General: Furnish and install as shown on plans, DURAWALL® Shower Walls Model 260 as manufactured by E.L. Mustee & Sons, Inc. Thermoplastic wall system shall be 5-piece construction with six formed shelves and overlapping corner panels. Uniform color throughout entire thickness of each panel. Color: ____ (White, Bone). Carton Contains: Center Panel, two end panels, two corner panels and instructions. Carton is 36-1/2"x73"x6", Weight 32 lbs.

Requires five or more 11 oz. cartridges of panel adhesive labeled for bonding to Bathtub and Shower walls.

Don't use adhesive containing tar, asphalt, lacquer thinner or toluene.



MUSTEE

E.L. Mustee & Sons, Inc. • 5431 West 164th Street • Brook Park, OH 44142 • Phone: 216.267.3100 • Fax: 216.267.9997
E-mail: info@mustee.com • Web: www.mustee.com • Proudly made in the USA

Notice: Our continuous commitment to product improvement may result in changes to product specifications without notice.
Patents pending. Made and Printed in U.S.A.



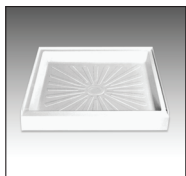
MUSTEE

Preferred by the "Pros"

260 DURAWALL® Thermoplastic Shower Walls Square & Rectangular Showers

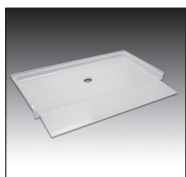
MORE ON PAGE 3 ►

► DURABASE® Fiberglass Square & Rectangular Shower Floors



Mustee offers numerous DURABASE® square and rectangular shower floors in white and bone for the 260 DURAWALL® Shower wall, which can fit alcoves up to 60" wide and 40" deep.

► CareGiver® Easy Access Shower Floors

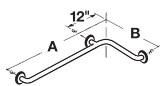


Mustee's popular CareGiver® shower floors are designed to permit easy entry or exit by wheelchairs or walkers.

► CareGiver® Grab Bars

Straight 304 stainless steel grab bars provide in-shower support and stability.

1½" DIA. INSIDE CORNER STYLES



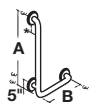
| Model | A | — Size — | B | C | UPC |
|---------|-----|----------|---|-----|-----------------|
| 390.304 | 34" | 18" | | 90° | 6 71031 00362 1 |
| 390.303 | 42" | 20" | | 90° | 6 71031 00361 4 |

1½" DIA. STRAIGHT

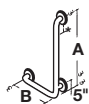


| Model | Size | UPC |
|---------|------|-----------------|
| 390.305 | 18" | 6 71031 00452 9 |
| 390.301 | 24" | 6 71031 00359 1 |
| 390.306 | 36" | 6 71031 00434 5 |
| 390.307 | 42" | 6 71031 00435 2 |
| 390.302 | 48" | 6 71031 00360 7 |

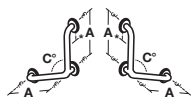
1½" DIA. ANGLED



| Model | A | — Size — | B | C | UPC |
|---------|-----|----------|---|-----|-----------------|
| 390.308 | 24" | 16" | | 90° | 6 71031 00436 9 |
| 390.309 | 32" | 16" | | 90° | 6 71031 00437 6 |



| | | | | | |
|---------|-----|-----|--|-----|-----------------|
| 390.310 | 24" | 16" | | 90° | 6 71031 00438 3 |
| 390.311 | 32" | 16" | | 90° | 6 71031 00439 0 |



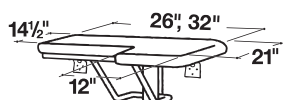
Rotate for RH or LH use

| | | | | | |
|---------|-----|------------------|--|------|-----------------|
| 390.312 | 30" | | | 90° | 6 71031 00440 6 |
| 390.313 | 12" | No Corner Flange | | 120° | 6 71031 00441 3 |
| 390.314 | 16" | | | 120° | 6 71031 00442 0 |
| 390.315 | 24" | | | 120° | 6 71031 00443 7 |

► CareGiver® Fold-Down Shower Seats

CareGiver® Fold-Down Shower Seats can be ordered in Right hand, Left hand and Rectangular Fold-Down and Leg-supported styles. All popular sizes are available to provide a stable, secure place to sit while showering.

LEFT-HAND SEAT — WALL MOUNT



| Model | Size | UPC |
|---------|-----------|-----------------|
| 390.402 | 26" x 21" | 6 71031 00364 5 |
| 390.404 | 32" x 21" | 6 71031 00366 9 |

RIGHT-HAND SEAT — WALL MOUNT



| Model | Size | UPC |
|---------|-----------|-----------------|
| 390.401 | 26" x 21" | 6 71031 00363 8 |
| 390.403 | 32" x 21" | 6 71031 00365 2 |

Continued next page »



MUSTEE

E.L. Mustee & Sons, Inc. • 5431 West 164th Street • Brook Park, OH 44142 • Phone: 216.267.3100 • Fax: 216.267.9997
E-mail: info@mustee.com • Web: www.mustee.com • Proudly made in the USA

Notice: Our continuous commitment to product improvement may result in changes to product specifications without notice.
Patents pending. Made and Printed in U.S.A.



MUSTEE

Preferred by the "Pros"

260 DURAWALL® Thermoplastic Shower Walls Square & Rectangular Showers

► CareGiver® Fold-Down Shower Seats (Continued)

CareGiver® Fold-Down Shower Seats can be ordered in Right hand, Left hand and Rectangular Fold-Down and Leg-supported styles. All popular sizes are available to provide a stable, secure place to sit while showering.



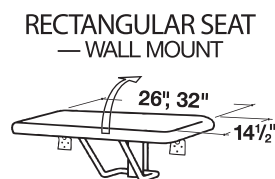
LEFT-HAND SEAT
— WITH LEGS

| | | |
|---------|-----------|-----------------|
| 390.405 | 26" x 21" | 6 71031 00444 4 |
| 390.406 | 32" x 21" | 6 71031 00445 1 |



RIGHT-HAND SEAT
— WITH LEGS

| | | |
|---------|-----------|-----------------|
| 390.407 | 26" x 21" | 6 71031 00446 8 |
| 390.408 | 32" x 21" | 6 71031 00447 5 |



RECTANGULAR SEAT
— WALL MOUNT

| | | |
|---------|---------------|-----------------|
| 390.409 | 26" x 14 1/2" | 6 71031 00448 2 |
| 390.410 | 32" x 14 1/2" | 6 71031 00449 9 |



RECTANGULAR SEAT
— WITH LEGS

| | | |
|---------|---------------|-----------------|
| 390.411 | 26" x 14 1/2" | 6 71031 00450 5 |
| 390.412 | 32" x 14 1/2" | 6 71031 00451 2 |

► Enclosures, Pivot and Bypass Doors

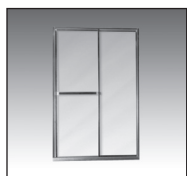
Premium quality STYLEMATE® enclosures available for the 260 DURAWALL® shower walls include...

STYLEMATE® — PIVOT DOOR ENCLOSURES



| Model No. | Finish | Glass | Height | Opening | UPC |
|-----------|-------------------|-------|--------|---------------|-----------------|
| 32.705 | Chrome | Clear | 65" | 29" – 31" | 6 71031 00462 8 |
| 32.706 | Oil Rubbed Bronze | Clear | 65" | 29" – 31" | 6 71031 00463 5 |
| 36.403 | Chrome | Clear | 65" | 34" – 35-1/2" | 6 71031 00464 2 |
| 36.404 | Oil Rubbed Bronze | Clear | 65" | 34" – 35-1/2" | 6 71031 00465 9 |

STYLEMATE® — BY-PASS FRAMED AND BY-PASS FRAMELESS ENCLOSURES



| Model No. | Finish | Glass | Height | Opening | UPC |
|-------------------------|-------------------|-------|--------|---------|-----------------|
| Framed Design | | | | | |
| 48.403 | Chrome | Clear | 69" | 47" | 6 71031 00466 6 |
| 48.404 | Brushed Nickel | Clear | 69" | 47" | 6 71031 00467 3 |
| 48.405 | Oil-Rubbed Bronze | Clear | 69" | 47" | 6 71031 00468 0 |
| Frameless Design | | | | | |
| 48.406 | Chrome | Clear | 69" | 47" | 6 71031 00469 7 |
| 48.407 | Brushed Nickel | Clear | 69" | 47" | 6 71031 00470 3 |
| 48.408 | Oil-Rubbed Bronze | Clear | 69" | 47" | 6 71031 00471 0 |
| Framed Design | | | | | |
| 60.403 | Chrome | Clear | 69" | 59" | 6 71031 00472 7 |
| 60.404 | Brushed Nickel | Clear | 69" | 59" | 6 71031 00473 4 |
| 60.405 | Oil-Rubbed Bronze | Clear | 69" | 59" | 6 71031 00474 1 |
| Frameless Design | | | | | |
| 60.406 | Chrome | Clear | 69" | 59" | 6 71031 00475 8 |
| 60.407 | Brushed Nickel | Clear | 69" | 59" | 6 71031 00476 5 |
| 60.408 | Oil-Rubbed Bronze | Clear | 69" | 59" | 6 71031 00477 2 |



MUSTEE

E.L. Mustee & Sons, Inc. • 5431 West 164th Street • Brook Park, OH 44142 • Phone: 216.267.3100 • Fax: 216.267.9997
E-mail: info@mustee.com • Web: www.mustee.com • Proudly made in the USA

Notice: Our continuous commitment to product improvement may result in changes to product specifications without notice.
Patents pending. Made and Printed in U.S.A.