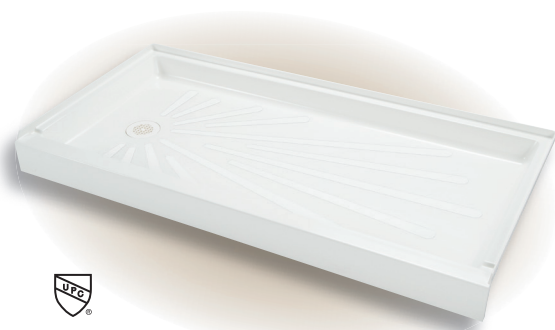


DURABASE® SHOWER FLOOR REPLACES 30" x 60" BATHTUB



Replace a standard 5' bathtub with an easy-access shower floor—or install new. The DURABASE® will let you achieve either...with no need for major re-plumbing or changing the room layout.

DURABASE® provides approximately 35% more usable interior floor space than a standard tub and eliminates the difficulties of stepping up and over a standard 15" high tub apron. It's excellent for seniors living independently or a beautiful way to create a luxury walk-in shower.

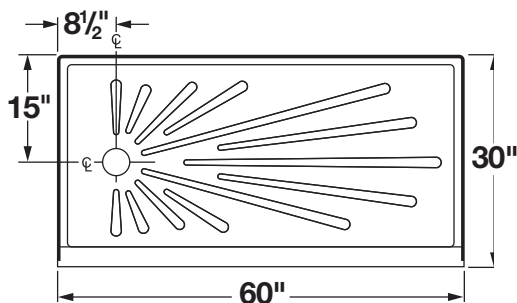
Features

- Fits the same footprint as a standard 30" x 60" bathtub
- High quality molded fiberglass construction
- Drain location offset 8½" x 15"; right and left-hand models
- Accommodates standard 2" drain or 60.300 Drain Kit
- Available in white and bone matched finishes with Mustee wall systems, see pages 18, & 19; as well as tile or like finish

Code Accepted

Mustee Easy Access Showers meet or exceed performance requirements as listed:

- IAPMO® Listed 
- American Society of Testing and Materials (ASTM) – E-84 
- American National Standards Institute (ANSI) Specification Z 124-2017



Model	Color	Drain
3060R	White	Right Hand
3060RBN	Bone	Right Hand
3060L	White	Left Hand
3060LBN	Bone	Left Hand

General: Furnish and install as shown on plans, ShowerTub™ Model: _____ as manufactured by E. L. Mustee & Sons, Inc. Floor to be one-piece, molded fiberglass, using matched metal molds under extreme heat and pressure. Surface to be slip-resistant design that does not interfere with flow of water. Size: 30" x 60". Flood level rim will not be less than 3" high. Tiling flange will extend not less than 1" higher than the threshold which is an integral molded water barrier. Threshold will be 4½" high. Drain hole offset 8½" by 15" to accept drain kit for 2" PVC, ABS or iron DWV pipe, available left or right hand. Color: _____ (White, Bone).

3060, 360 & 3865 Shower Floor Drains

Drain Assembly – for 2" DWV Pipe

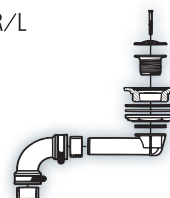
Model	Description
42.317A	Drain assembly

Drain Seal

42.320	Optional drain seal for 2" copper (DWV)
42.321	Optional drain seal for 2" soil pipe (SW)

Drain Assembly – use with 3060R/L and 360R/L to replace tub waste and connect to existing pipe.

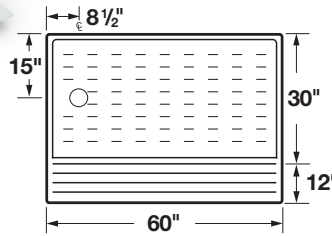
Model	Color
60.300A	White
60.300ABN	Bone



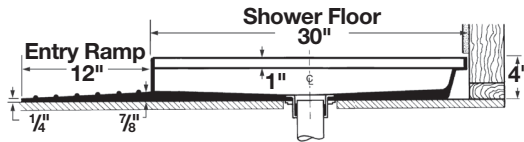
EASY ACCESS SHOWER FLOORS



Barrier-Free Shower Floor 30"x 60" and Entry Ramp 12"x 60"



Shown with optional entry ramp, 360.100



Features

- Produced from high-grade, reinforced, molded fiberglass
- Ideal for new or remodel projects...fits several DURAWALL® Shower Walls as well as ceramic tile or preformed wall kit
- Replaces standard 30" deep by 60" wide bathtubs
- Slip resistant surface...stain, mildew and mold-resistant finish
- Optional drain kits are available; LH or RH drain location (see page 23)

Model	Color	Drain
BARRIER-FREE SHOWER FLOOR		
360R	White	Right Hand
360L	White	Left Hand

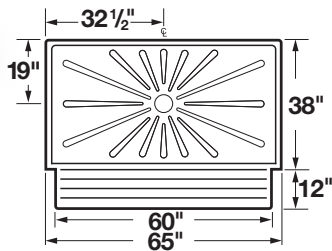
Model	Color
ENTRY RAMP	
360.100	White

General: Furnish and install as shown on plans DURABASE® Shower Floor Model: _____, as manufactured by E. L. Mustee & Sons, Inc. Floor to be one piece, molded fiberglass made with matched metal molds. Surface to be slip-resistant that does not interfere with the flow of water. Size 30" x 60". Shoulder will be no less than 3" higher or less than 1" wide. Tiling flange will extend not less than 1" high to provide an integral water barrier. Shall meet ADA, ASTM D635, E-84 and D635, and Code of Federal Regulation July 1, 1997. Color: White.

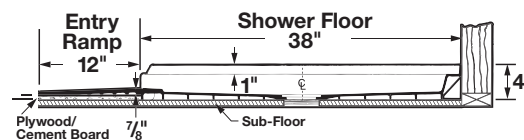
360.100 Entry Ramp — Furnish and install as shown on plans DURABASE® Shower Floor Entry Ramp Model: _____, as manufactured by E. L. Mustee & Sons, Inc. Ramp to be one piece, molded fiberglass made with matched metal molds. Size 12" x 60". Color: White.



Barrier-Free Shower Floor 38"x 65" and Entry Ramp 12"x 60"



Shown with optional entry ramp, 360.100



Features

- Produced from high-grade, reinforced, molded fiberglass
- Ideal for new or remodel projects
- Fits 65" wide by 38" deep alcove
- Slip resistant surface...stain, mildew and mold-resistant finish
- Meets ADA requirements for a full 36" turning circle
- Suggest 42.317A drain assembly
- Optional drain kits also available (see page 23)



Model	Color	Drain
BARRIER-FREE SHOWER FLOOR		
3865	White	Center Drain

Model	Color
ENTRY RAMP	
360.100	White

General: Furnish and install as shown on plans Barrier-Free Shower Floor Model 3865, as manufactured by E. L. Mustee & Sons, Inc. Floor to be one piece, molded fiberglass made with matched metal molds. Surface to be slip-resistant Starburst® design that does not interfere with the flow of water. Size 38" x 65". Shoulder will be no less than 3" higher or less than 1" wide. Tiling flange will extend not less than 1" high to provide an integral water barrier. Threshold will be 1/2" high. Shall meet ADA, ASTM D635, E-84 and D635, and Code of Federal Regulation July 1, 1997 and July 1, 2007. Color: White.

360.100 Entry Ramp — Furnish and install as shown on plans DURABASE® Shower Floor Entry Ramp Model: 360.100, as manufactured by E. L. Mustee & Sons, Inc. Ramp to be one piece, molded fiberglass made with matched metal molds. Size 12" x 60". Color: White.